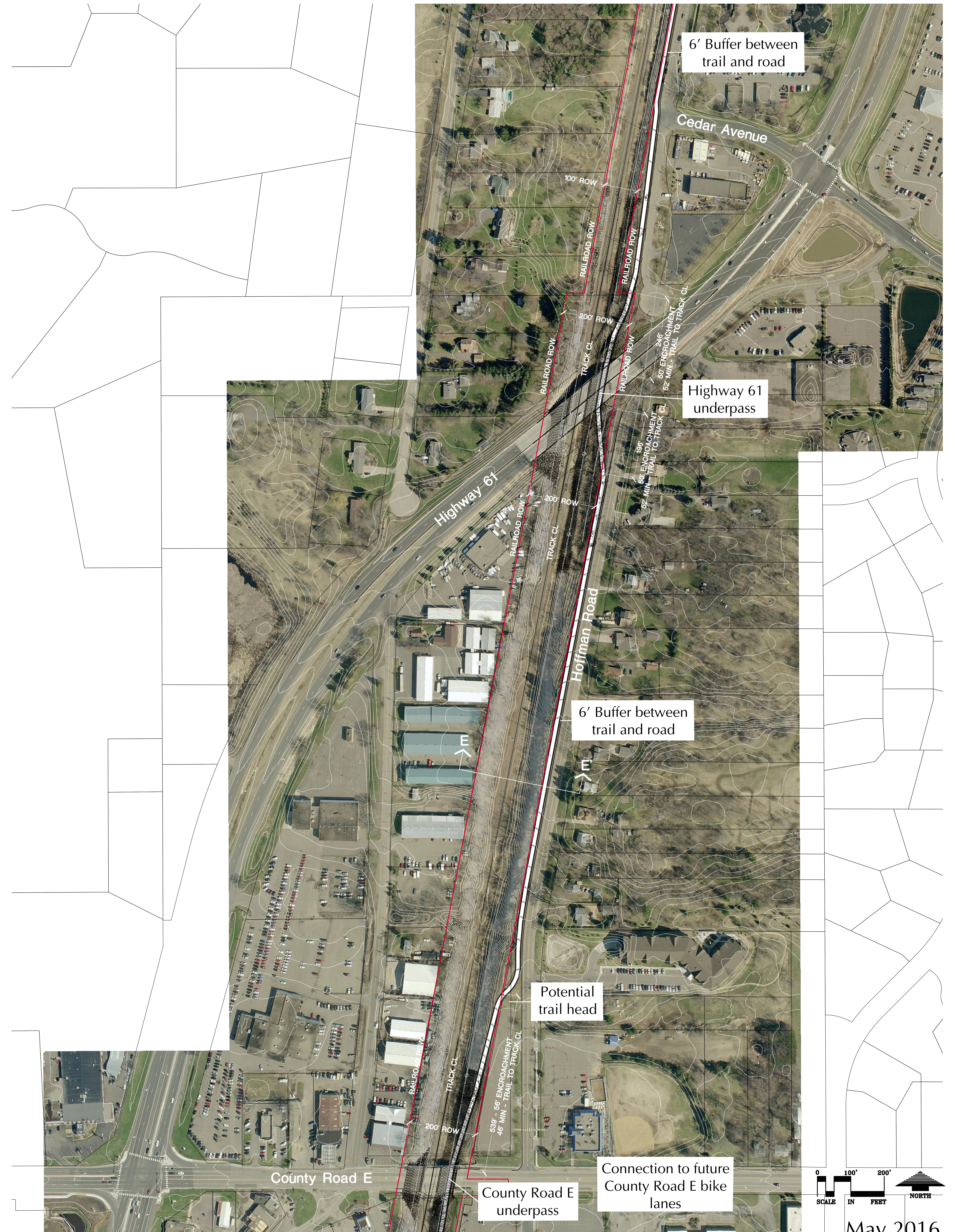


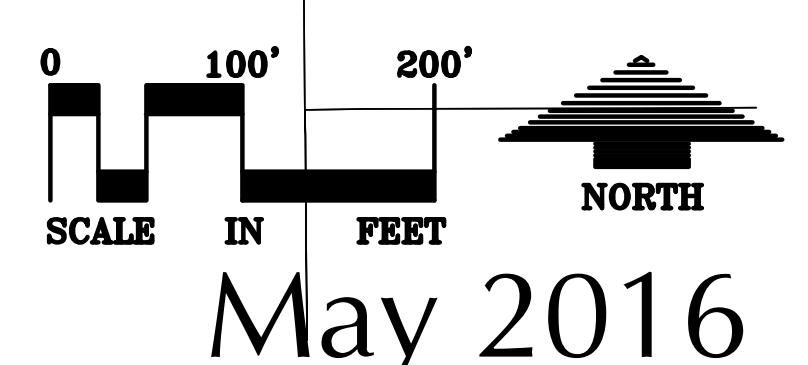
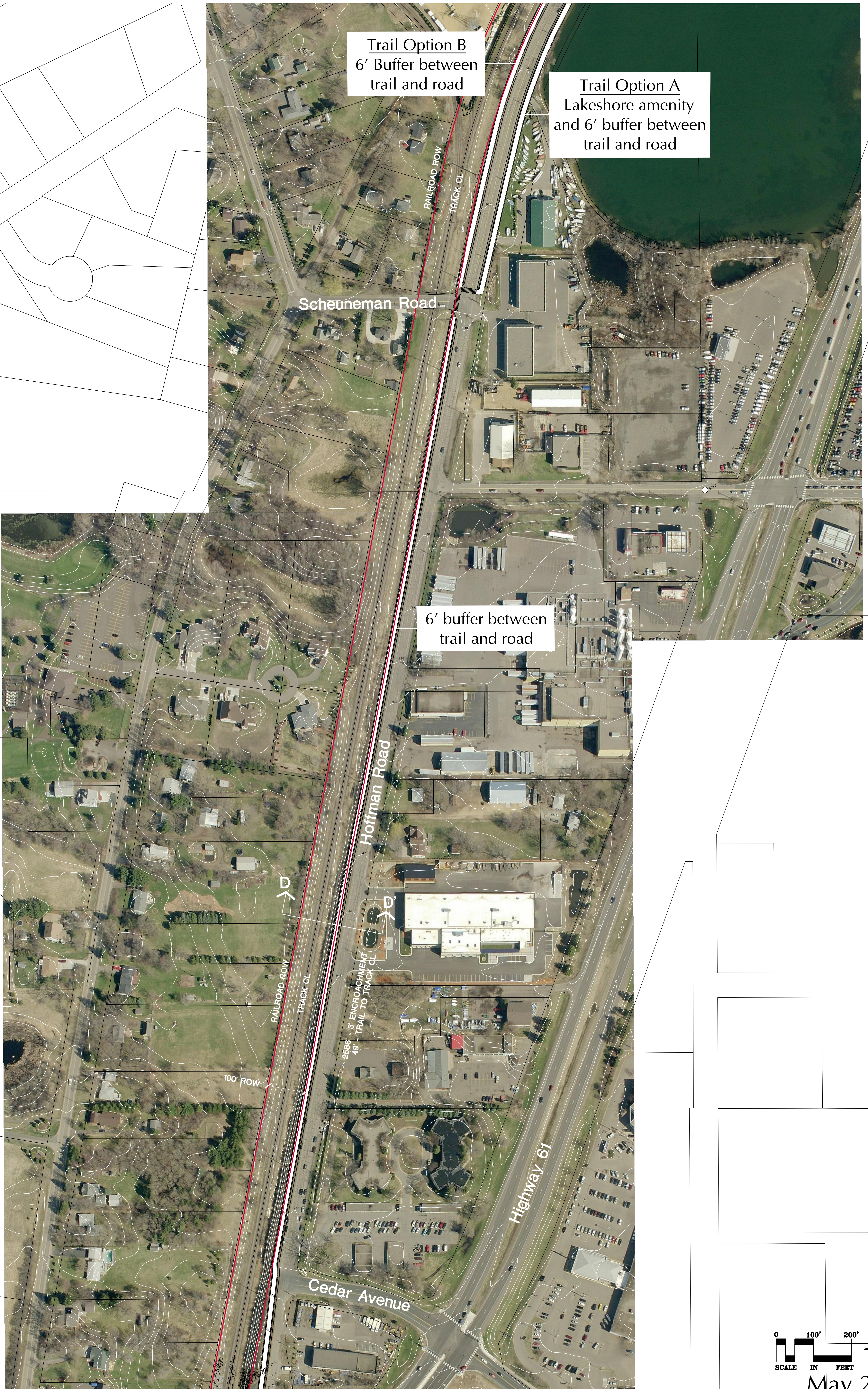
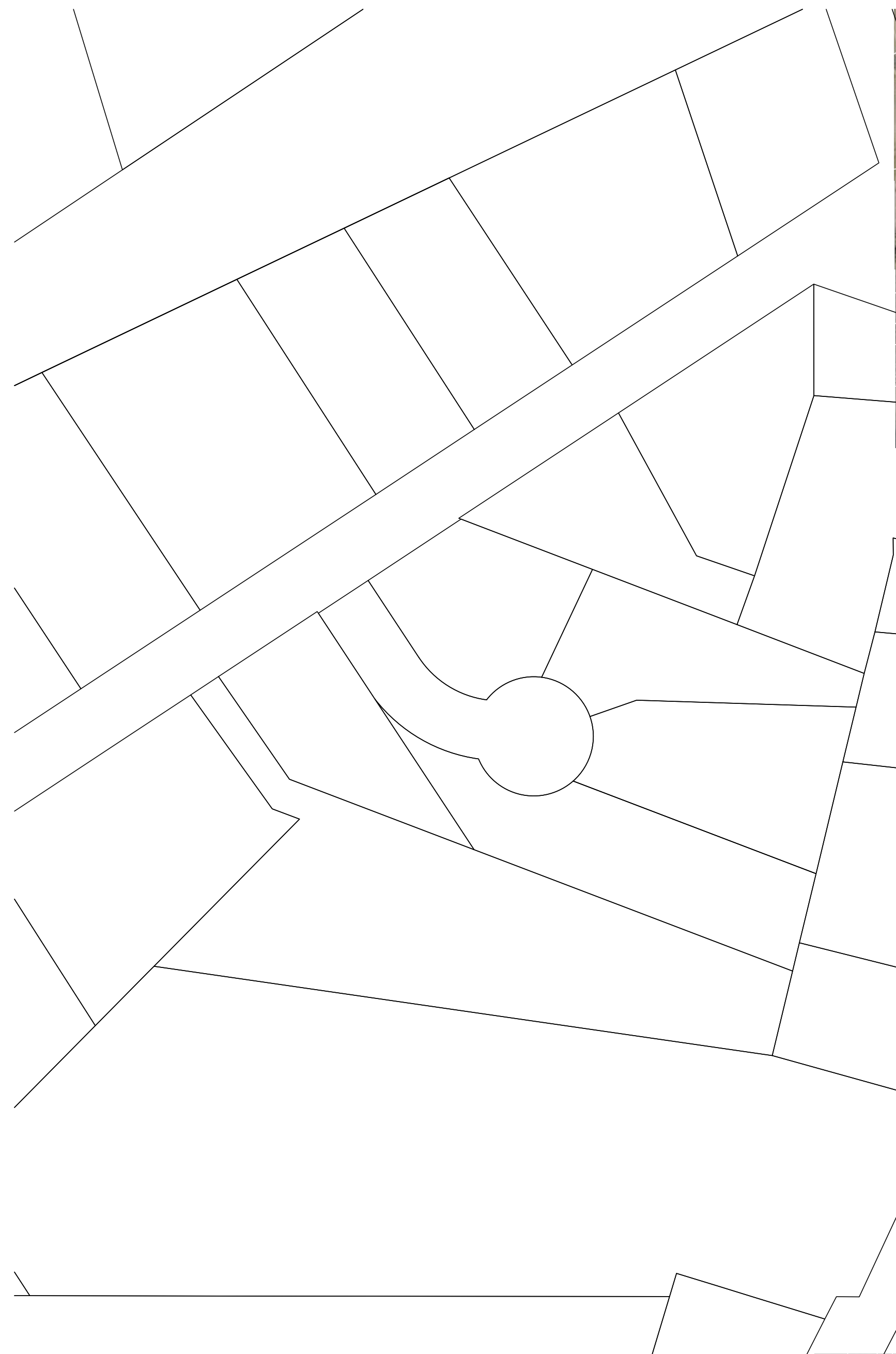
May 2016



VENTO TRAIL - NORTH EXTENSION

County Road E to Cedar Avenue

May 2016



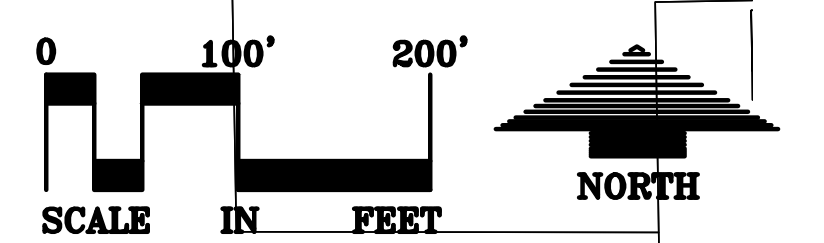
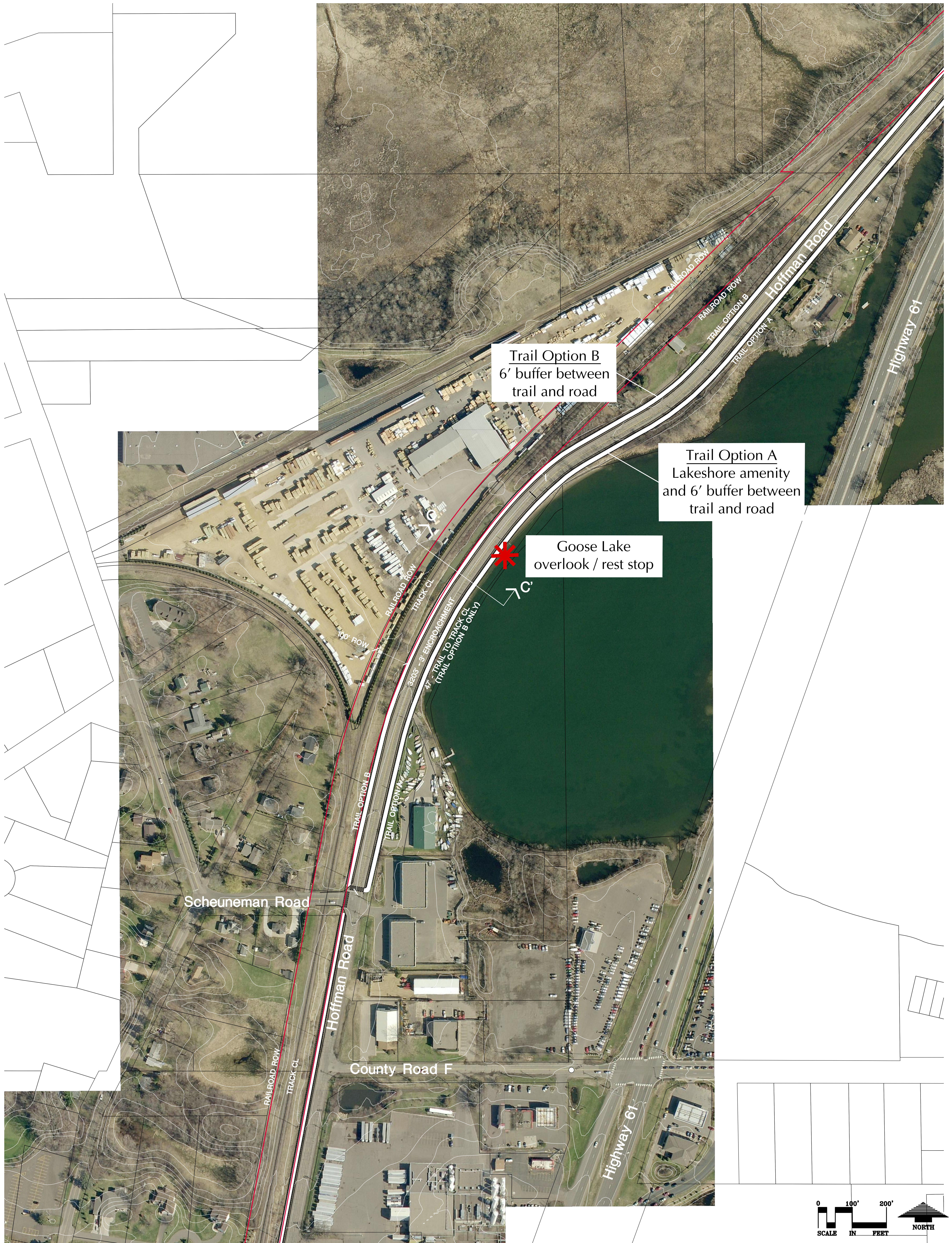
May 2016



LOUCKS
PLANNING
CIVIL ENGINEERING
LAND SURVEYING
LANDSCAPE ARCHITECTURE
ENVIRONMENTAL
7200 Hemlock Lane, Suite 300
Maple Grove, MN 55369
763.424.5505
www.loucksinc.com
LOUCKS PROJECT NO. 14078

VENTO TRAIL - NORTH EXTENSION

Cedar Avenue to Scheuneman Road



May 2016

LOUCKS

PLANNING
CIVIL ENGINEERING
LAND SURVEYING
LANDSCAPE ARCHITECTURE
ENVIRONMENTAL

7200 Hemlock Lane, Suite 300
Maple Grove, MN 55369
763.424.5505
www.loucksinc.com
LOUCKS PROJECT NO. 14078

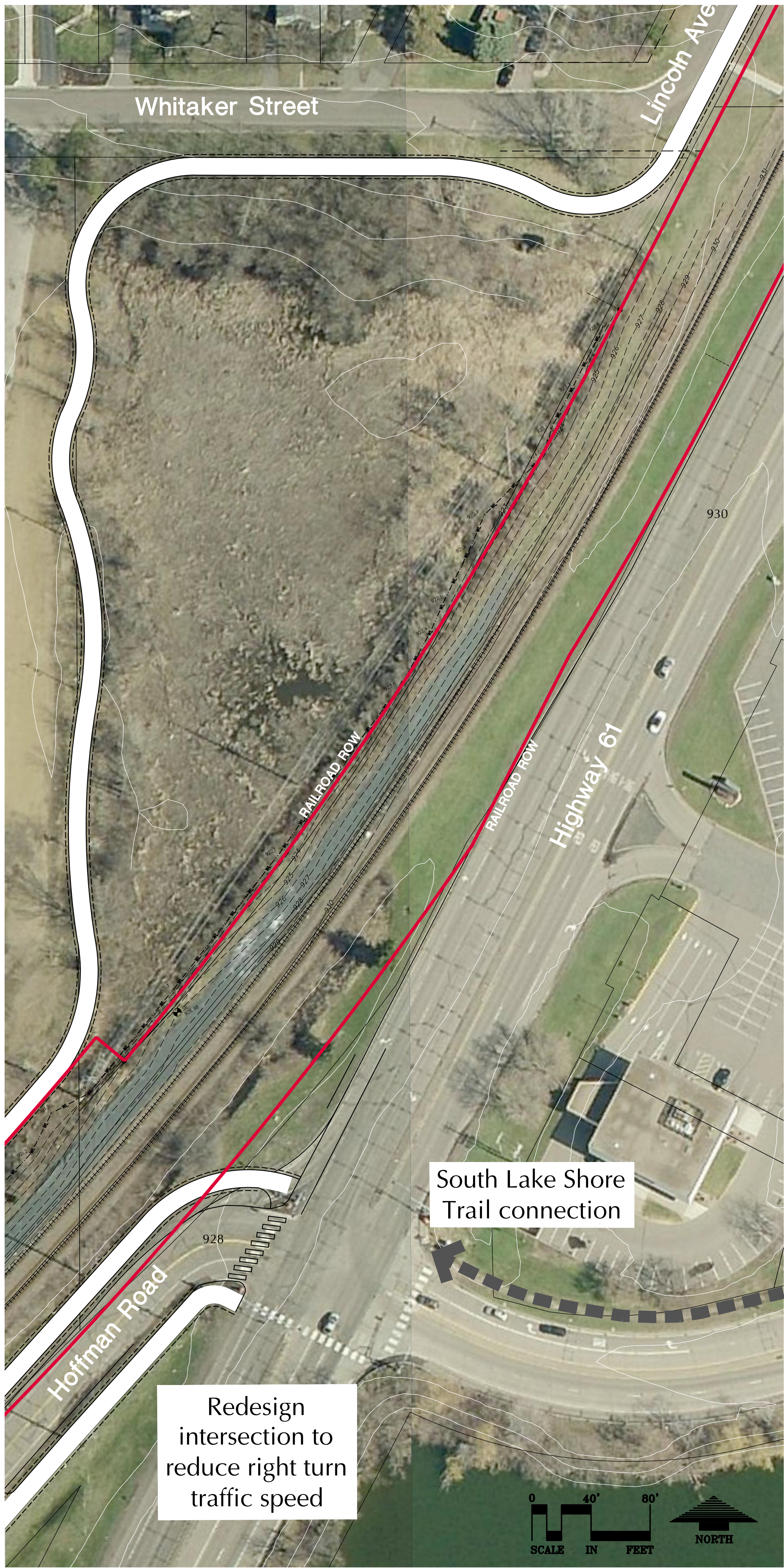
VENTO TRAIL - NORTH EXTENSION

Scheuneman Road north

Sheet 4



May 2016

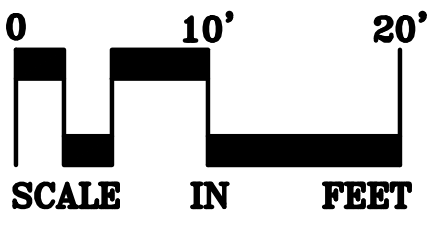
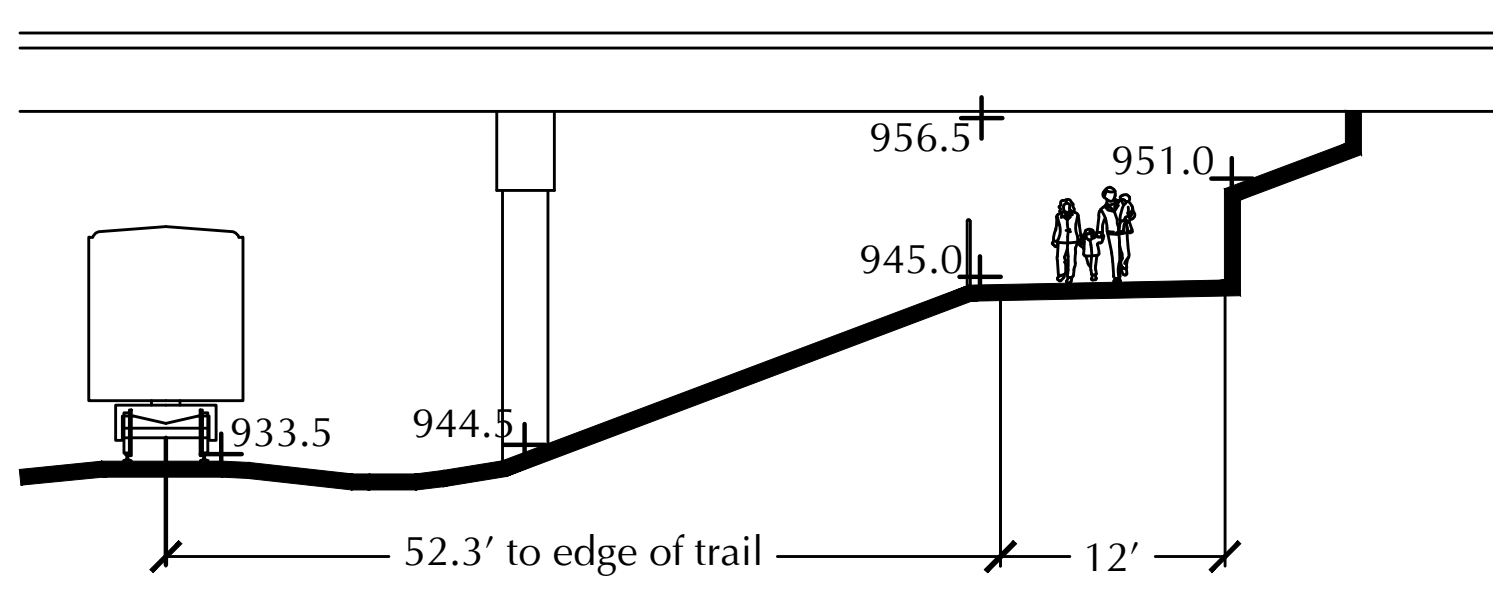
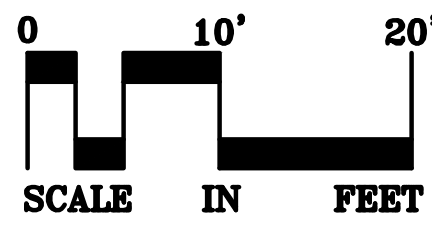
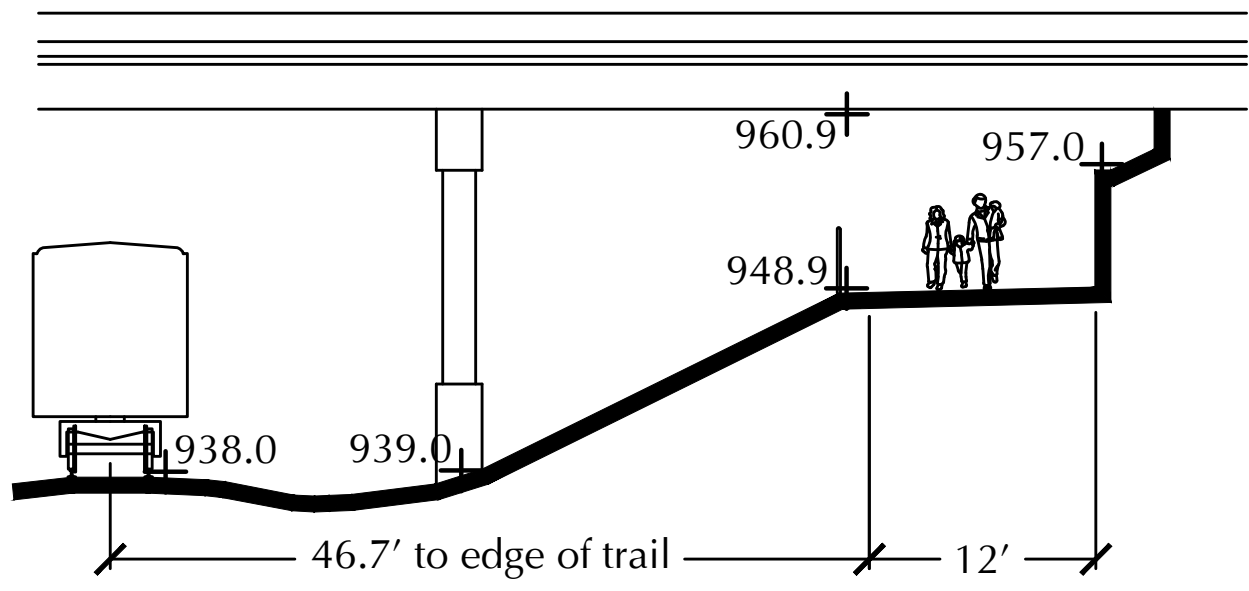
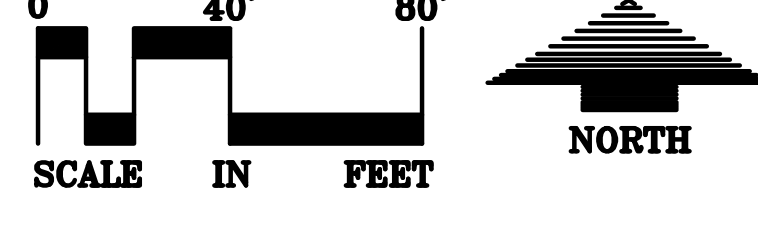
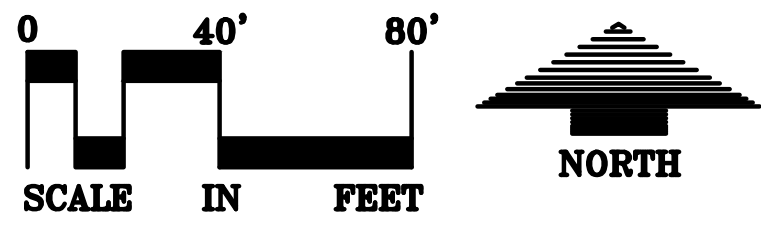
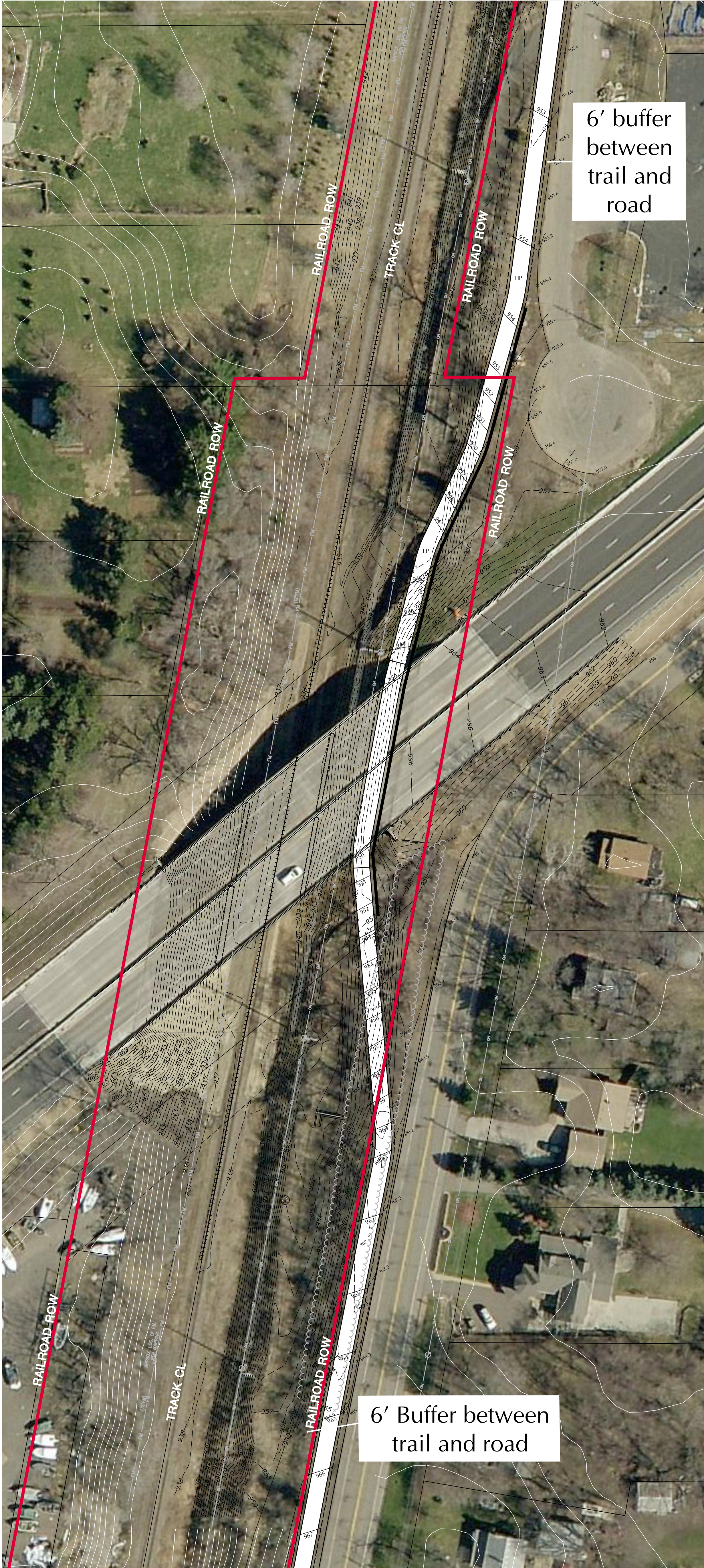
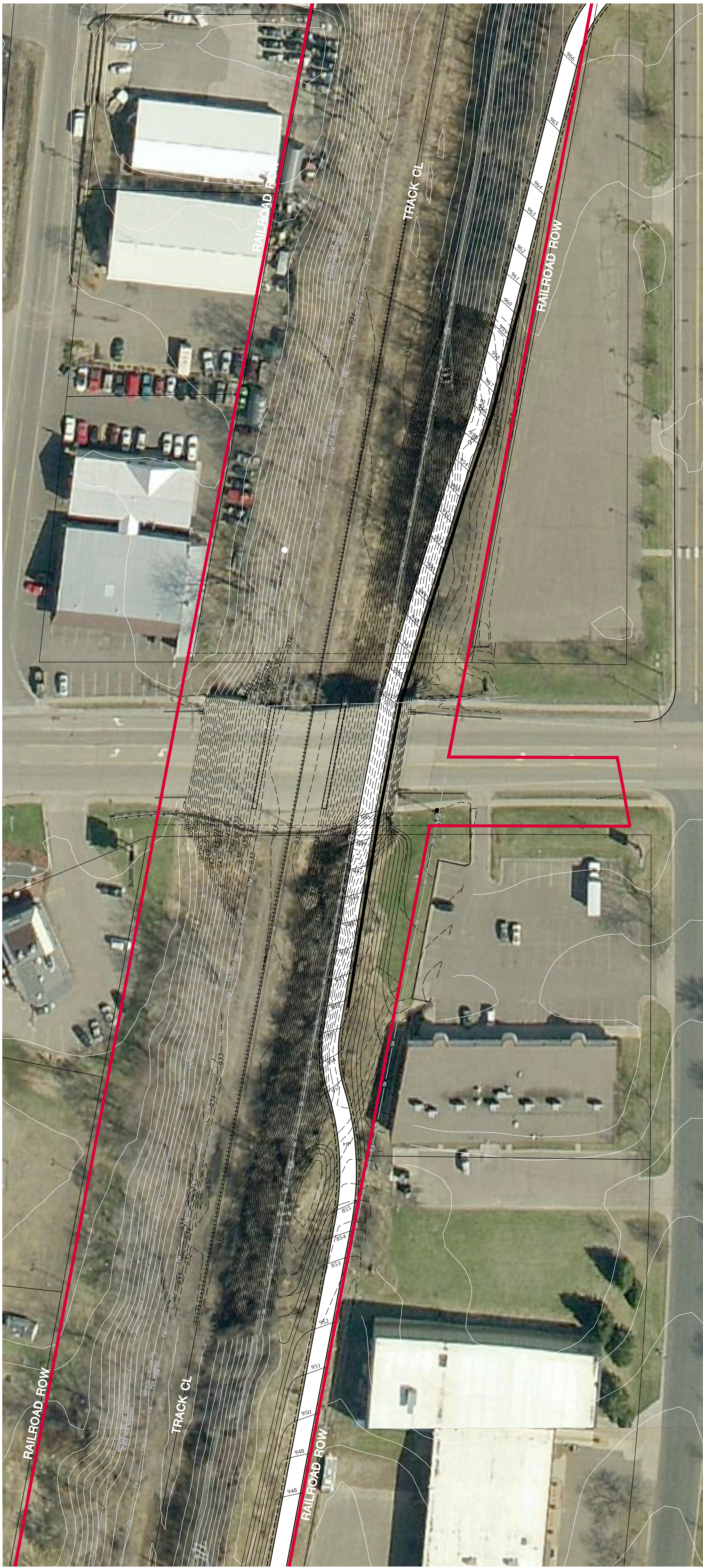


HOFFMAN / HWY 61 INTERSECTION



VENTO TRAIL TERMINUS / REST STOP

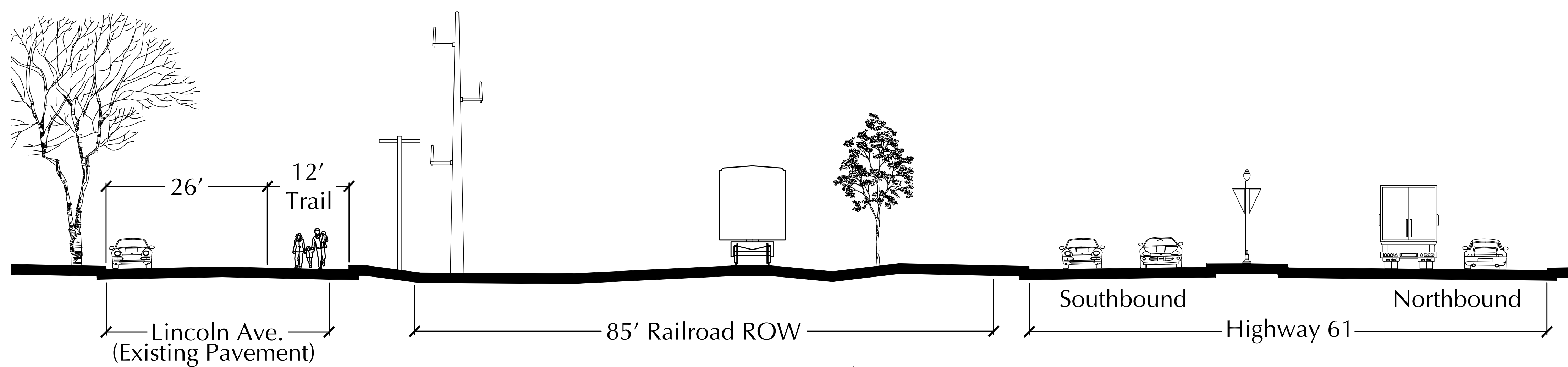
May 2016



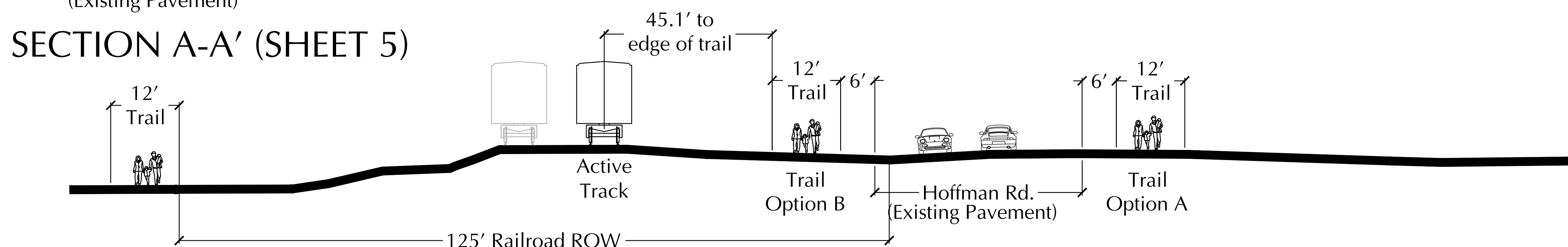
COUNTY ROAD E
UNDERPASS

HIGHWAY 61
UNDERPASS

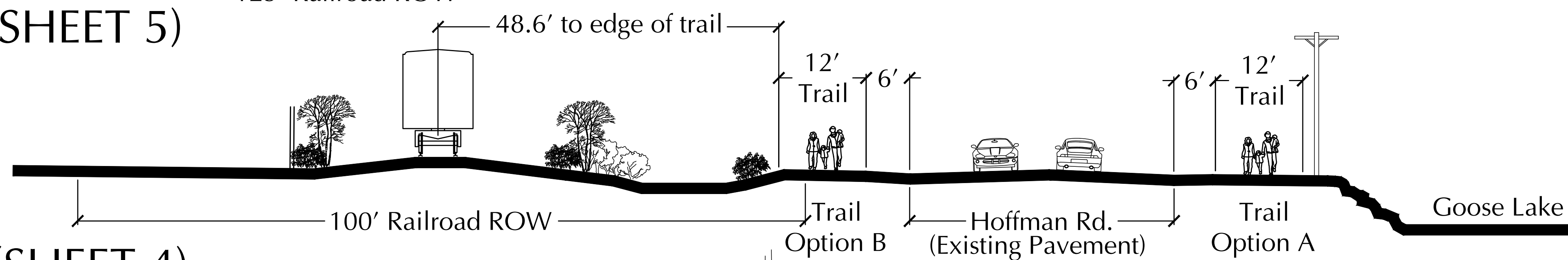
May 2016



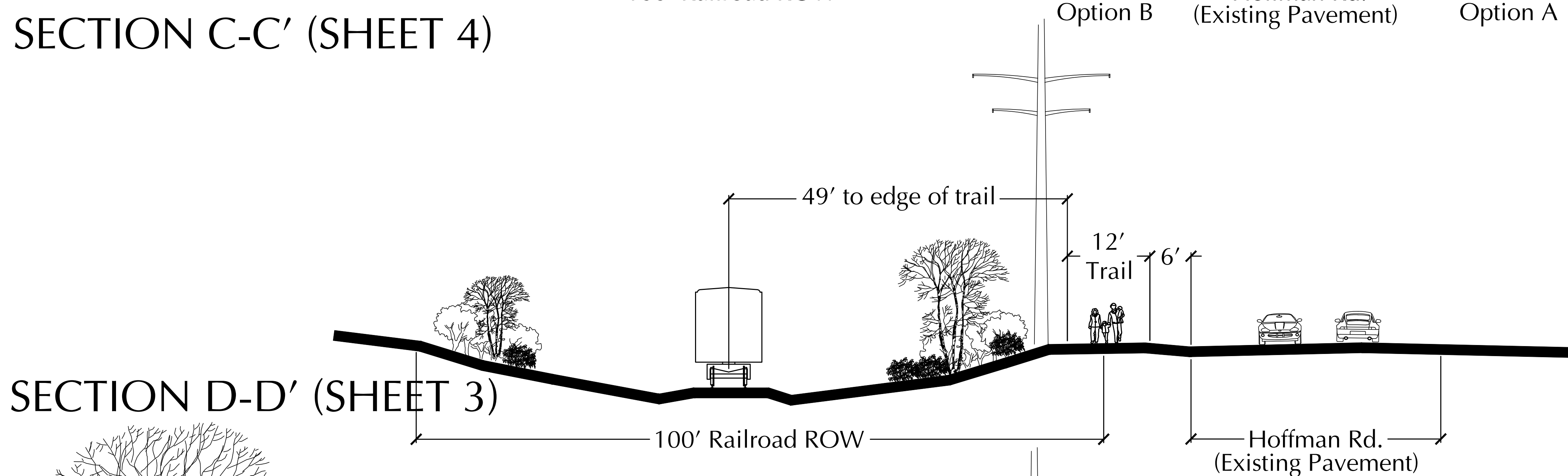
SECTION A-A' (SHEET 5)



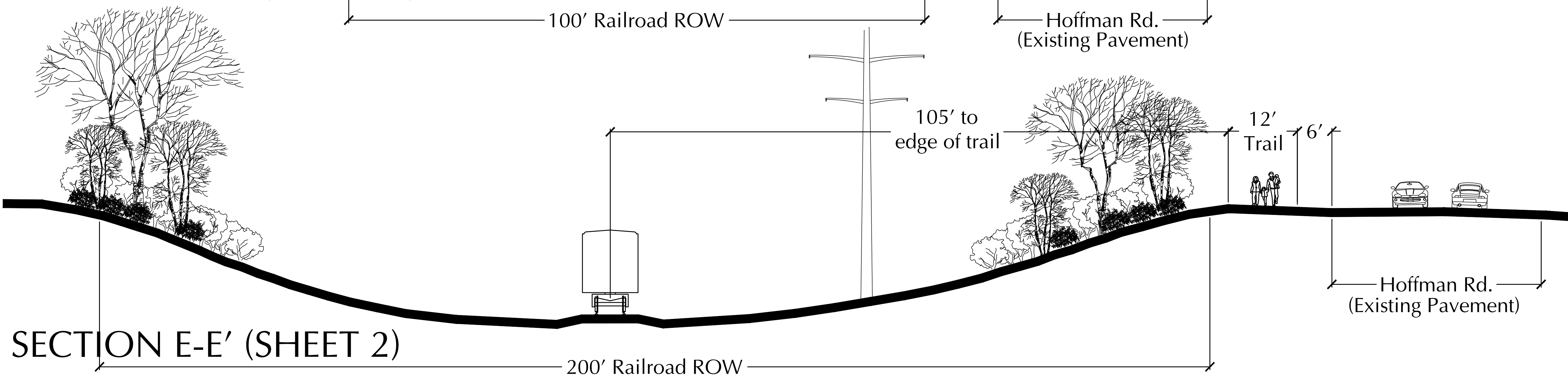
SECTION B-B' (SHEET 5)



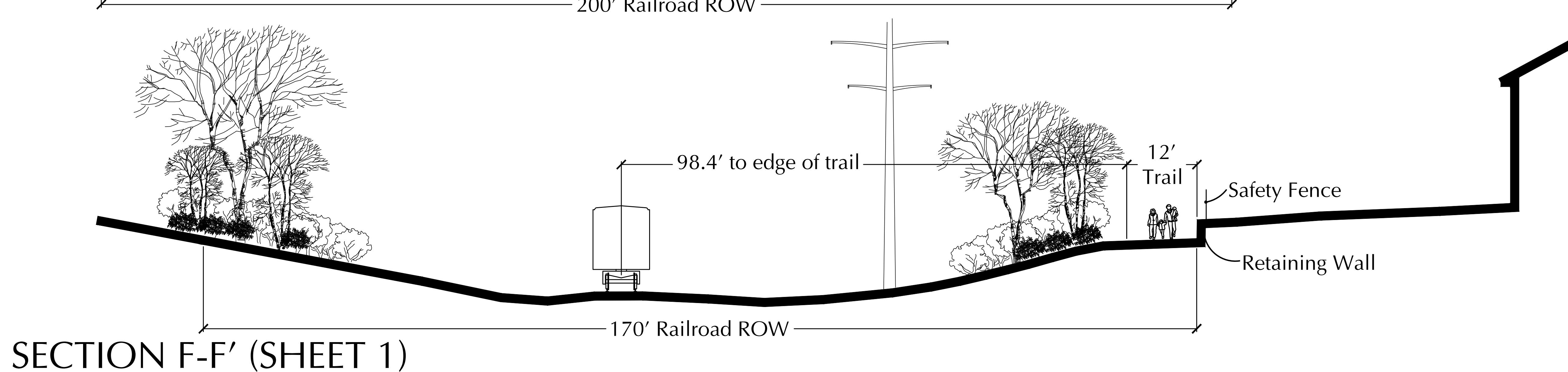
SECTION C-C' (SHEET 4)



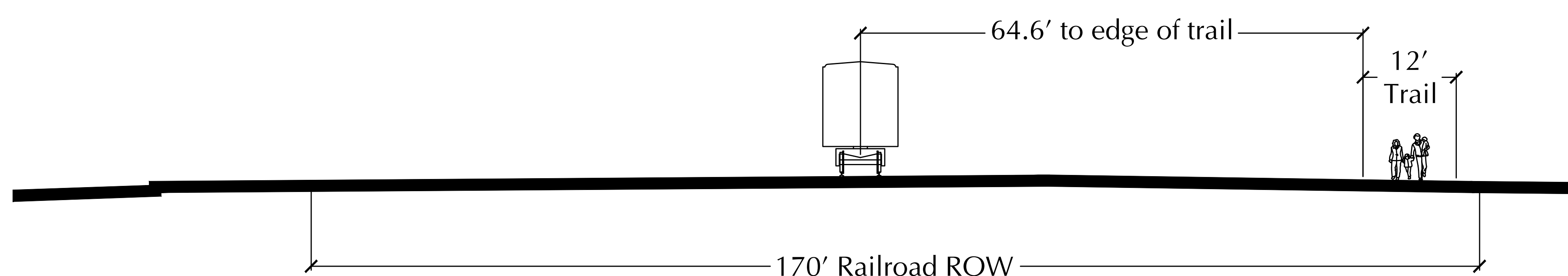
SECTION D-D' (SHEET 3)



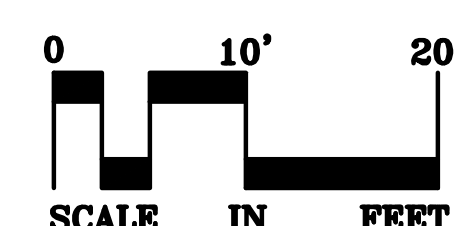
SECTION E-E' (SHEET 2)



SECTION F-F' (SHEET 1)



SECTION G-G' (SHEET 1)



May 2016