

# Community Indicators

**L. Elizabeth Tolzmann**  
Director of Policy and Planning

August 6, 2019

**Vision:** A vibrant community where all are valued and thrive.

**Mission:** A county of excellence working with you to enhance our quality of life.

**Goals**



**WELL-BEING**

**Strengthen individual, family and community health, safety and wellbeing** through effective safety-net services, innovative programming, prevention and early intervention, and environmental stewardship.



**PROSPERITY**

**Cultivate economic prosperity and invest in neighborhoods with concentrated financial poverty** through proactive leadership and inclusive initiatives that engage all communities in decisions about our future.



**OPPORTUNITY**

**Enhance access to opportunity and mobility for all residents and businesses** through connections to education, employment and economic development throughout our region

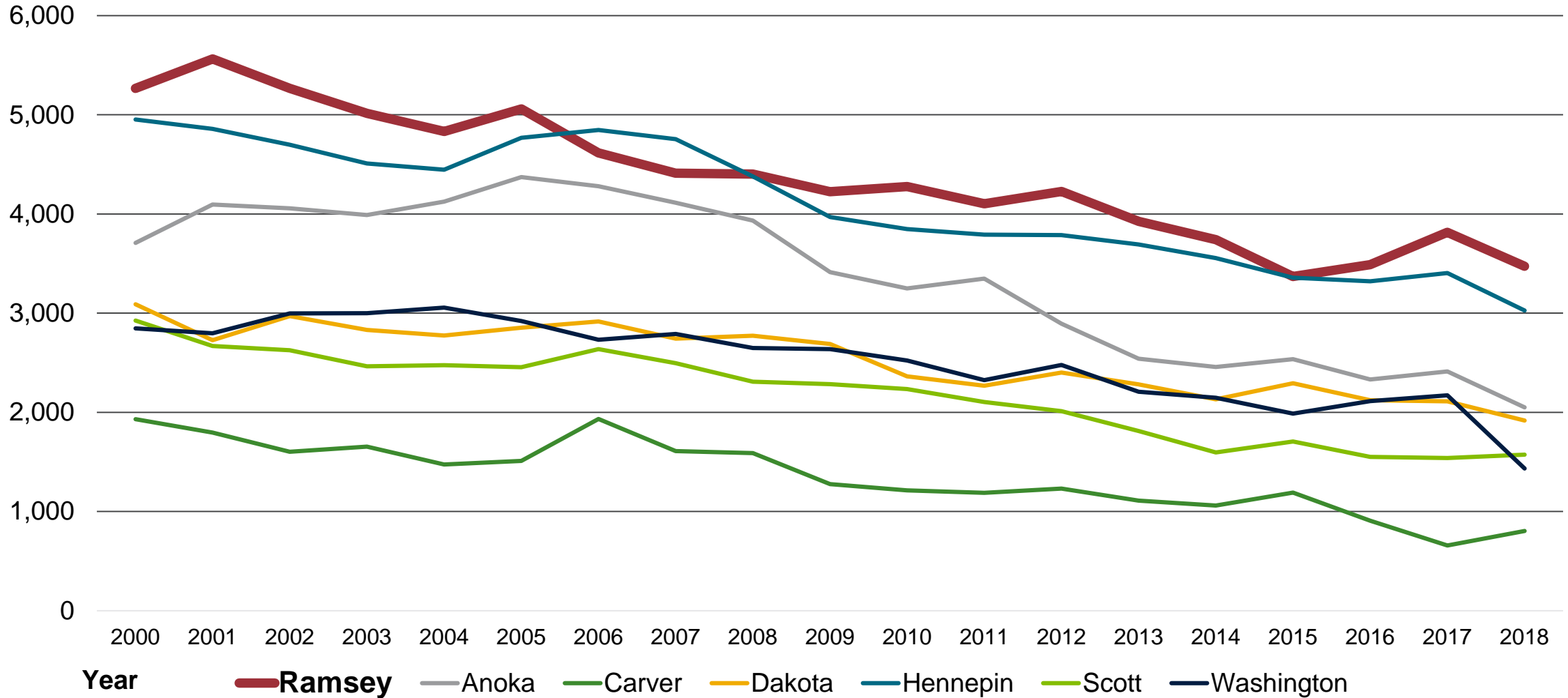


**ACCOUNTABILITY**

**Model fiscal accountability, transparency and strategic investments** through professional operations and financial management.

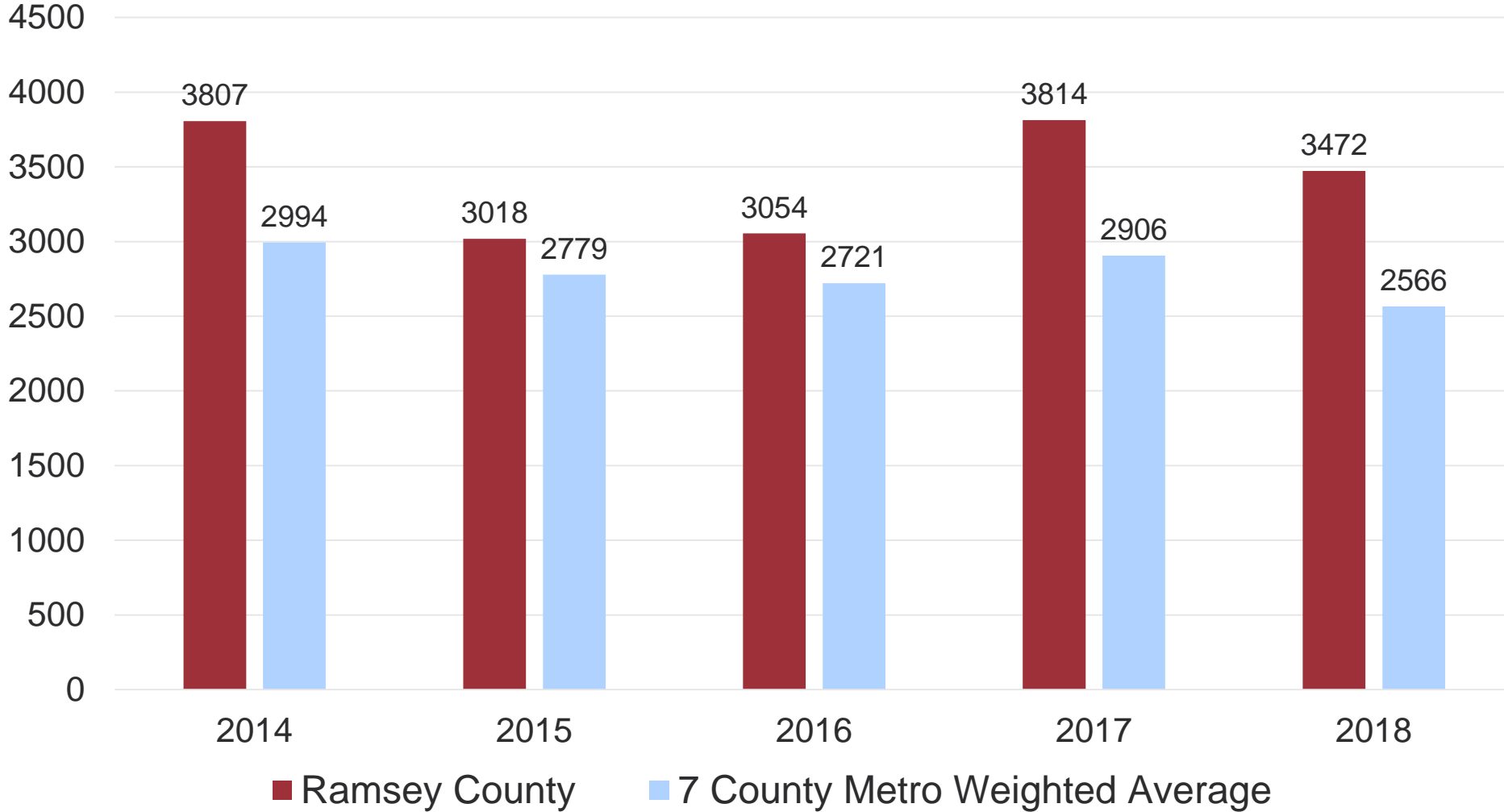
Performance Measures	Community Indicators
Measures the <b>outputs of our services</b>	Measure <b>values, conditions and outcomes</b>
Focuses on areas where we can be more <b>efficient, cost-effective, and allocate resources</b>	Produces the story of where our community in relation to <b>historical trends</b> over time
We can <b>control and influence</b> our data and inputs	Our <b>entire community</b> is responsible for controlling, impacting and influencing community indicators
	Data come from <b>credible and reliable third party sources</b>

# Serious Crime Rate Per 100K Residents, Metro Counties, 2000-2018



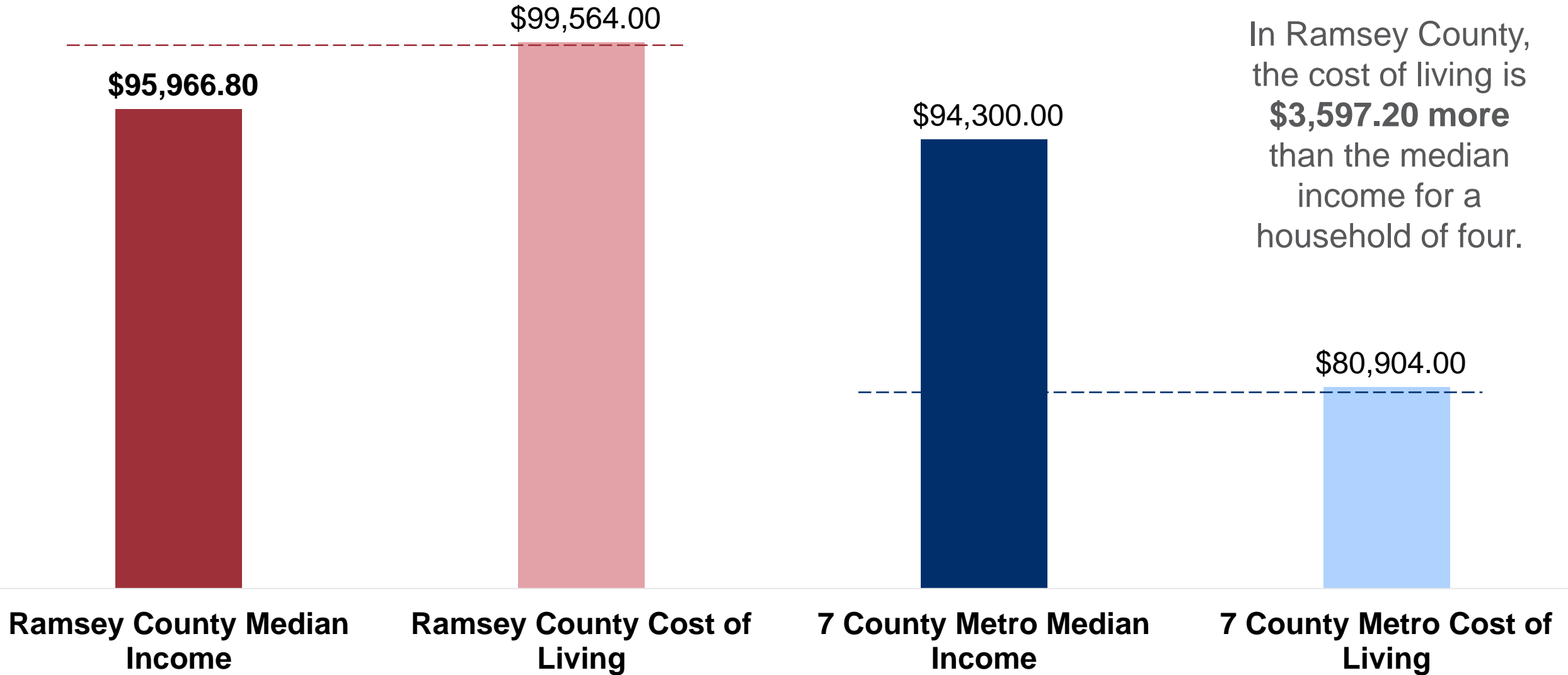
Source: Federal Bureau of Investigation, Uniform Crime Report (2000-2018).

## Serious Crime Rate per 100K Residents, 2014-2018

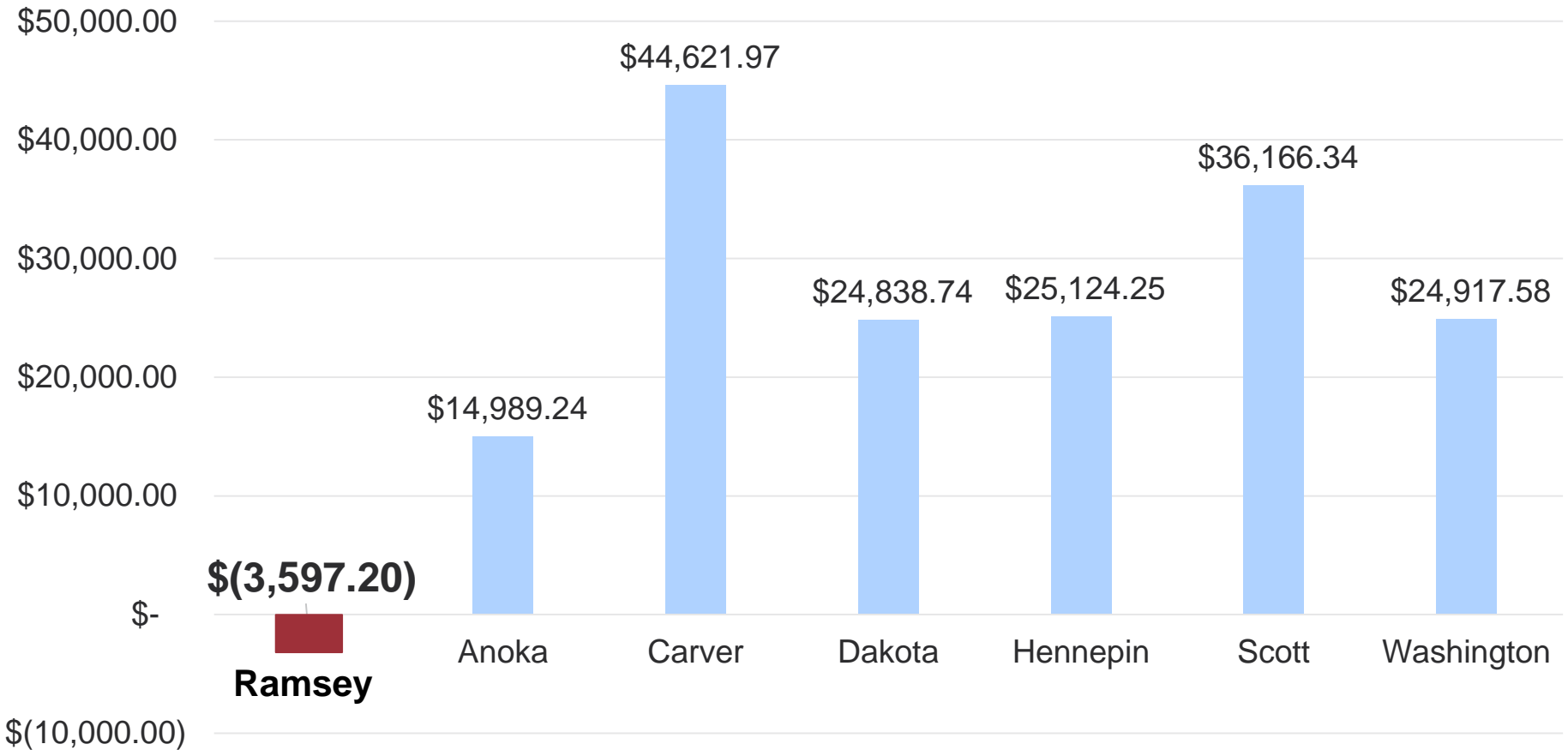


Although Ramsey County's Serious Crime Rate increased from 2016 to 2017, it began to **decrease** again from 2017 to 2018.

## Cost of Living and Median Income for 4-Person Household, 2018



## Difference Between Cost of Living and Median Income\* for 4-Person Household, 2018

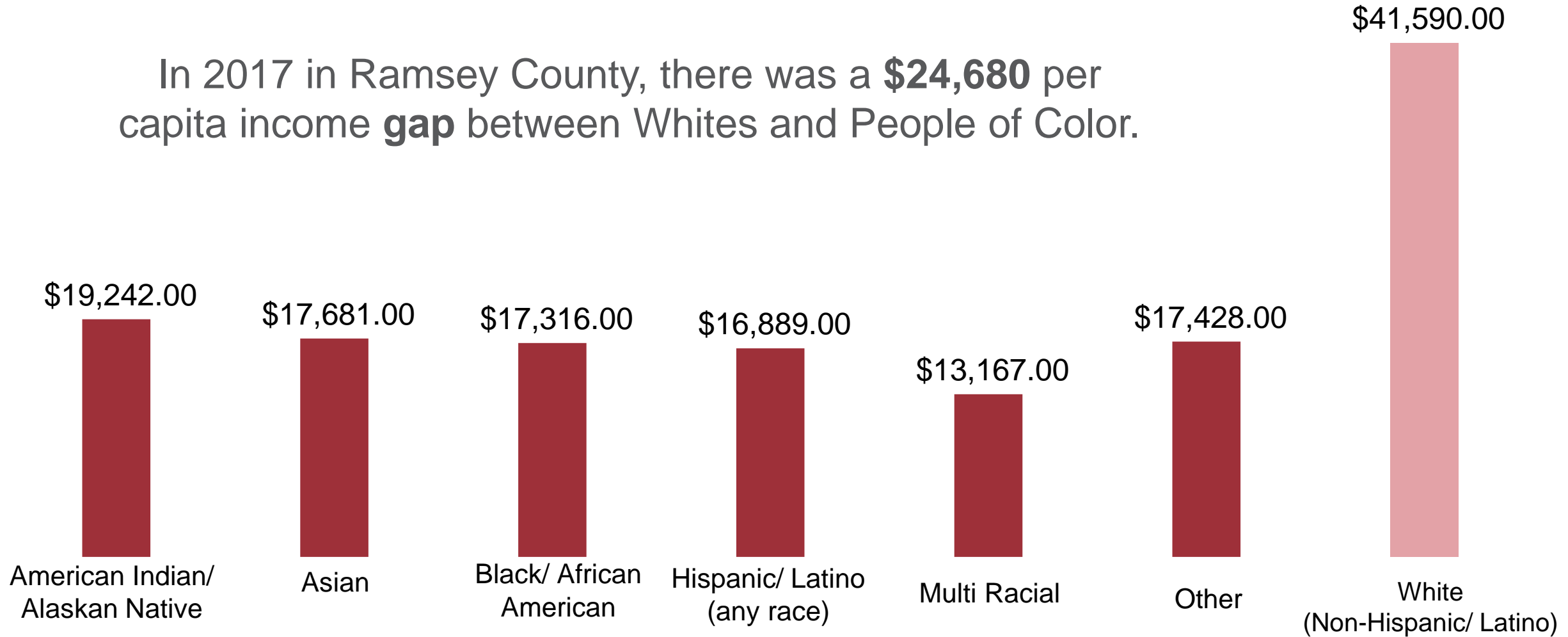


Ramsey County remains the only county in the metro where the cost of living is **higher** than the median income. This gap continues to **increase**.

\* Median Income is originally sourced from ACS 2017 5-year estimates and inflation adjusted for 2018.

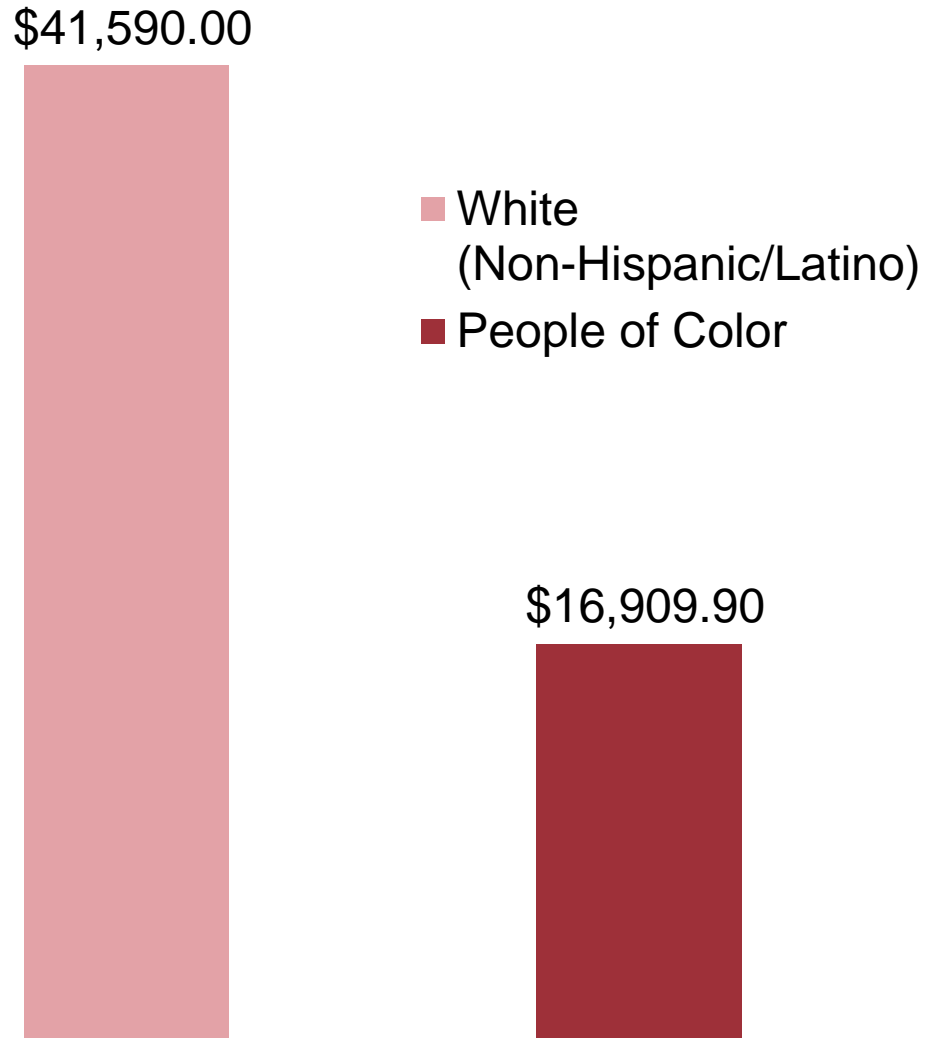
## Per Capita Income, Ramsey County, Race/Ethnicity, 2017

In 2017 in Ramsey County, there was a **\$24,680** per capita income **gap** between Whites and People of Color.



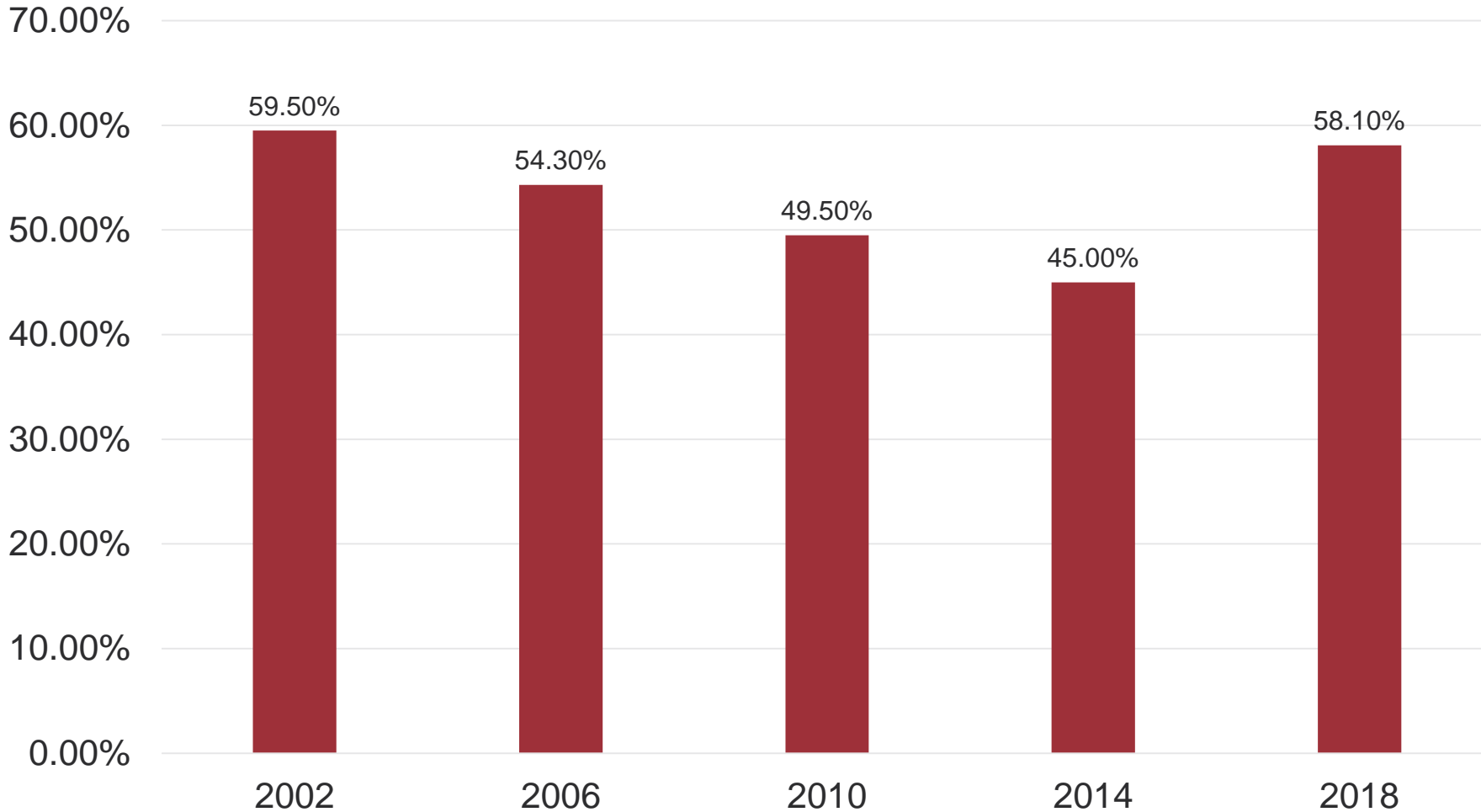


## Per Capita Income, Ramsey County, Race/Ethnicity, 2017



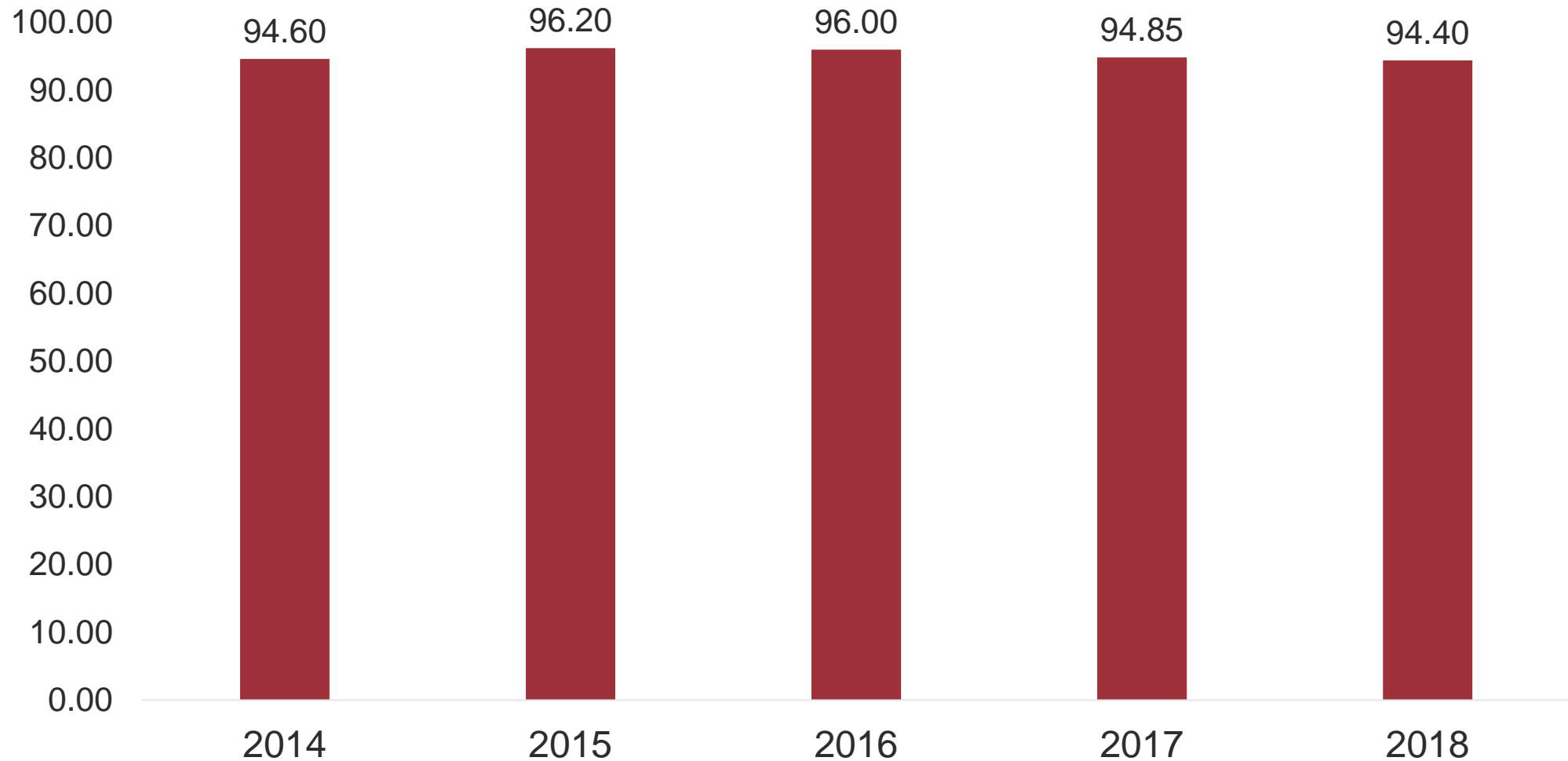
In 2017 in Ramsey County, there was a **\$24,680** per capita income **gap** between Whites and People of Color.

### Percentage of Voting Age Population Casting Ballots in Midterm Elections, Ramsey County, 2002-2018



In 2018, Ramsey County experienced its **highest voting for a midterm election** in the last decade with an estimated 58.1% of the voting age population casting a ballot.

# Ramsey County Residential Sales Assessment Ratio



## Continuous Improvement of the Community Indicators Process

- Partner with stakeholders and community to define and align **new indicators** and monitor progress from a regional perspective
- Refine **performance measures to connect with community indicators** when appropriate
- Establish clear relationships between **performance measures, strategic priorities, and community indicators**
- Refine structure to more rigorously support performance measures and community indicators to **drive budget decisions, strategic planning and prioritization of allocation of resources**

## Key Takeaways

- How are we using **data to tell the story** of our community over time and to drive decision-making?
- Indicators involve **multiple factors and disaggregation for a holistic view** of an individual, family and community.
- We can not improve our community alone – it requires **collaboration, partnership, alignment and intentionality** with our stakeholders
- Community indicators **directly influence** the budgeting process in **aligning our resources to identify priorities** to be most effective in our **residents-first service delivery** and focusing on the right thing that will have the **most impact?**



# Open Data Portal

## Community Indicators