

2022 Community Indicators

Elizabeth Tolzmann, Director of Policy and Planning
September 6, 2022

Community Indicators

Performance Measures	Community Indicators
Measure the outputs of our services	Measure values, conditions and outcomes
Focus on areas where we can be more efficient, cost-effective, and allocate resources	Produces the story of where our community in relation to historical trends over time
We can control and influence our data and inputs	Our entire community is responsible for controlling, impacting and influencing community indicators
	Data come from credible and reliable third-party sources

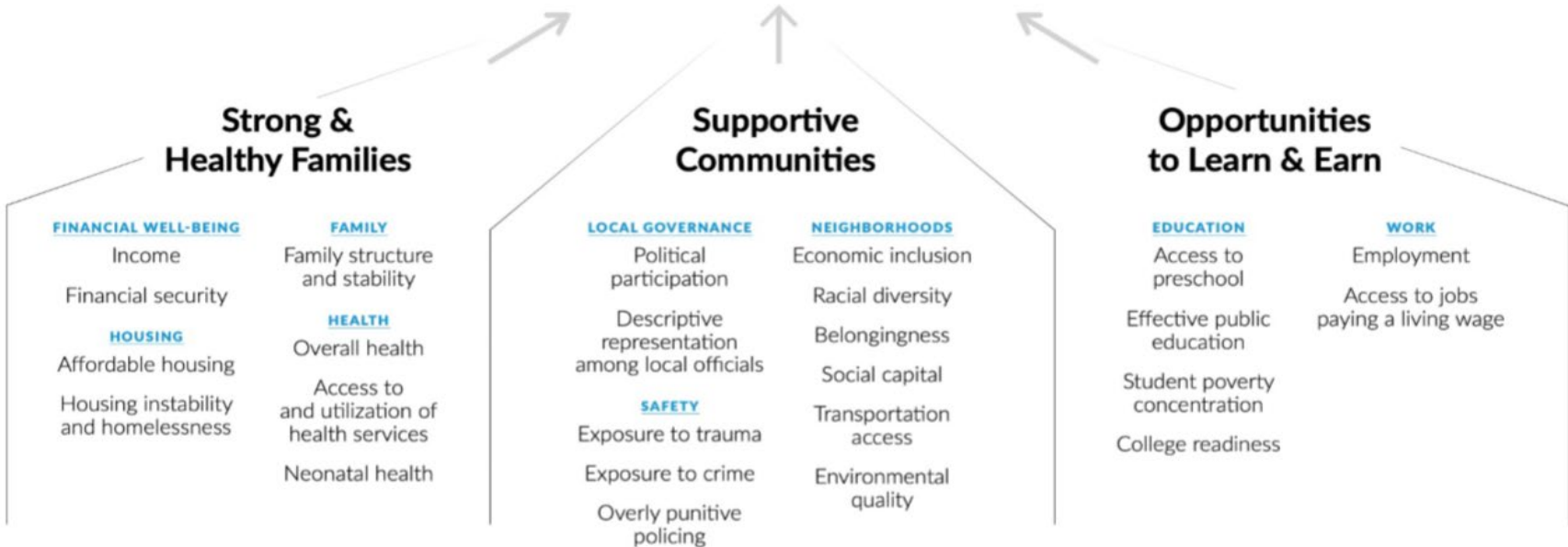
Moving from Performance Measurement to Performance Management, Evaluation and Outcomes

- Performance management in the public sector is an ongoing, systematic approach to improving results through data-informed decision making, continuous organizational learning, and a focus on accountability for performance.
- Performance management is integrated into all aspects of an organization's management and policy-making processes, transforming an organization's practices so it is focused on achieving improved results and outcomes for the public.

Community Indicator Guiding Principles

- Intended for community and service team audiences
- Developed with community input
- Easy to read and understand
- Connected to county strategic priorities, goals, and performance measures
- Represent longer term community wide changes
- Disaggregated by race/ethnicity, allowing us to focus on disparities

Connection with Upward Mobility



Summary of Community Engagement Process

- Developed initial Mobility Metrics (Community Indicators) with community partners and Urban Institute TA advisors.
- Held two Ramsey County-led Community Data Walks with over 100 participants in October 2021 to get feedback on indicators.
- Each community partner organization also held its own engagement session(s) to gather additional feedback from the communities they serve.
- Refined indicators based on community input and expertise.

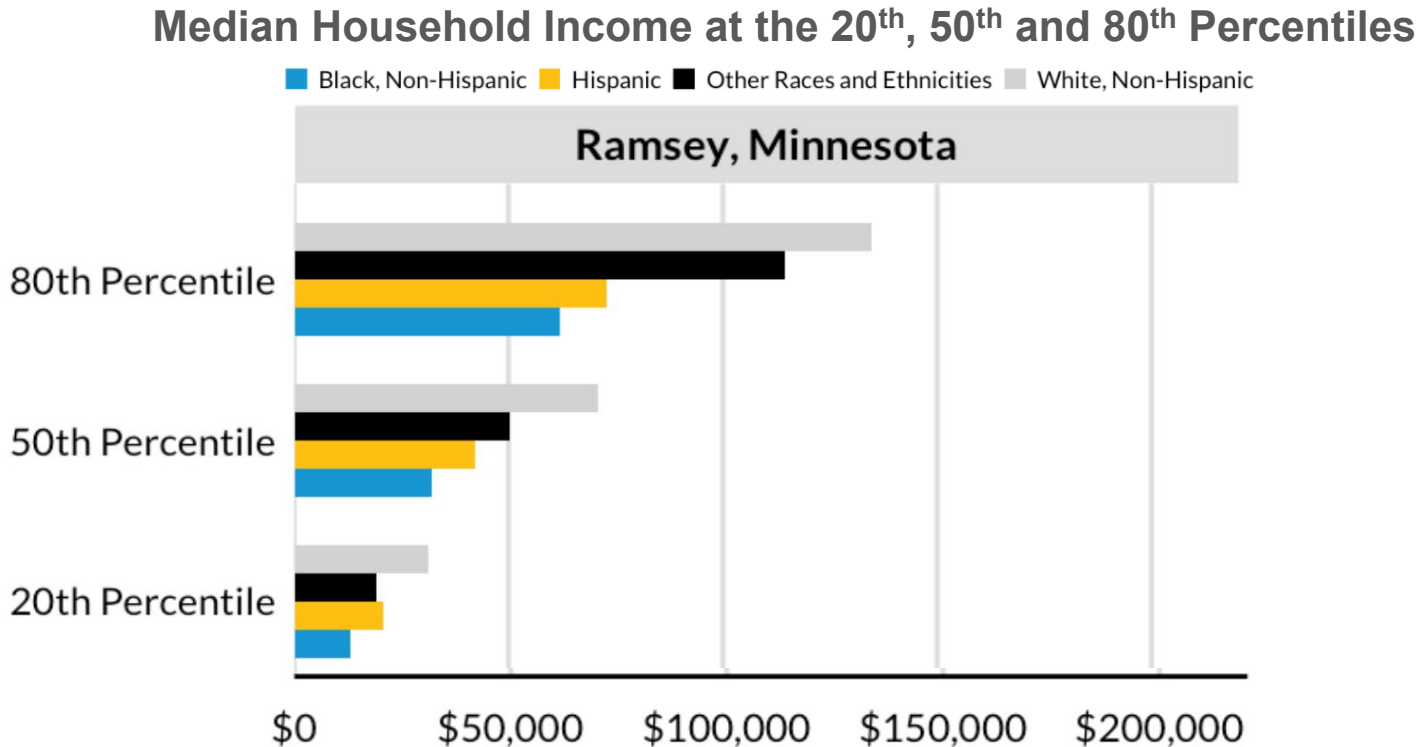
Community Partner Organizations

- Saint Paul Promise Neighborhood
- East Metro Community Centers
 - Hallie Q Brown Community Center
 - Keystone Community Services
 - Merrick Community Services
 - Neighborhood House
- Suburban Ramsey Family Collaborative
- Community Action Partnership of Ramsey and Washington Counties

Connections to Strategic Priorities, Goals and Performance Measures

Strategic Priority	Community Indicator
Intergenerational Prosperity for Racial and Economic Inclusion	<ul style="list-style-type: none"> • Household Income • Rent Burden • Full-time Workers Living in Poverty • Debt in Collections • Student Loan Debt • Home ownership rates • Home Purchase Application Rates • Mortgage Application Denial Rates
Advancing a Holistic Approach to Strengthen Families	<ul style="list-style-type: none"> • Preschool Enrollment • Food Insecurity • Early Childhood Developmental Screenings* • Quality of licensed childcare* • Availability of licensed childcare*
Advancing Racial and Health Equity and Shared Community Power	<ul style="list-style-type: none"> • Low-Weight Births • Access to Preventative Care*
Aligning Justice System Outcomes with Community Values	<ul style="list-style-type: none"> • Juvenile Arrests • JDC Admissions • RCCF Admissions

The median household income for white households is \$70,916, higher than the median income at the 80th percentile for Black households (\$62,165).

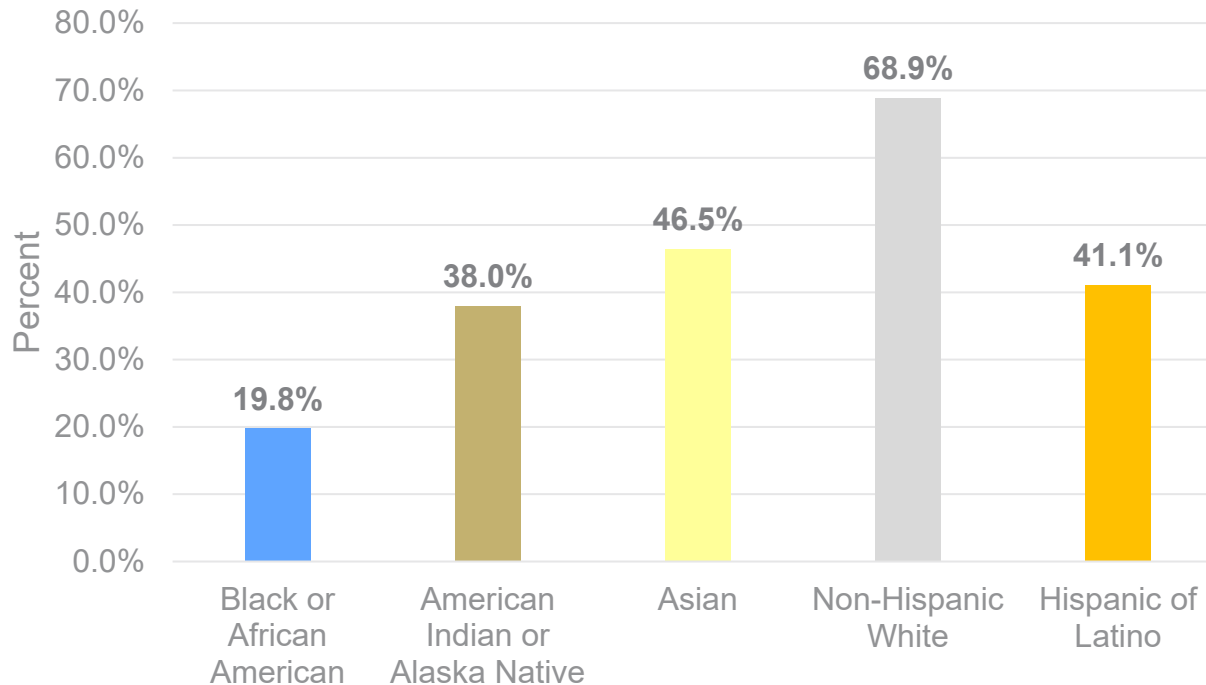


Source: American Community Survey (ACS) Public Use Microdata Sample (PUMS), 2018

Notes: To identify income percentiles, all households are ranked by income from lowest to highest. The income level at the threshold between the poorest 20 percent of households and the richest 80 percent is the 20th percentile. Similarly, the threshold between the poorest and richest halves is the 50th percentile income (or median), and threshold between the poorest 80 percent and richest 20 percent is the 80th percentile. The Confidence Interval for this metric is not available at this time.

Homeownership rate is 69% for Non-Hispanic White households and 20% percent for Black/African American households, a gap of 49 percentage-points.

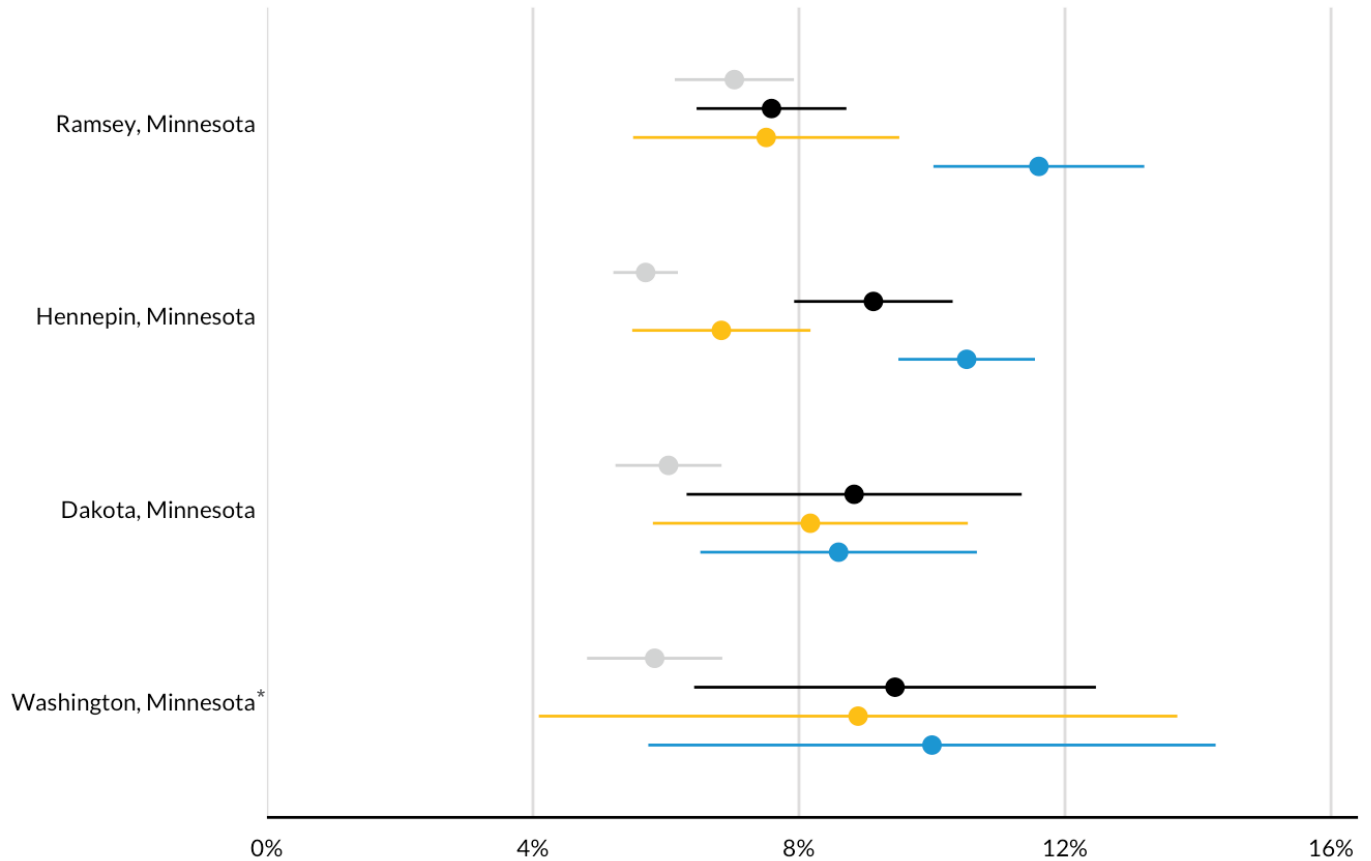
Ramsey County Homeownership Rates by Race of Householder



Source: American Community Survey (ACS) Public Use Microdata Sample (PUMS), 2018 (5-yr)

Metric: Share of low-weight births

● Black, Non-Hispanic ● Hispanic ● Other Races and Ethnicities ● White, Non-Hispanic



In Ramsey County, Black babies are more likely to be born with low birth-weight than babies of other races & ethnicities.

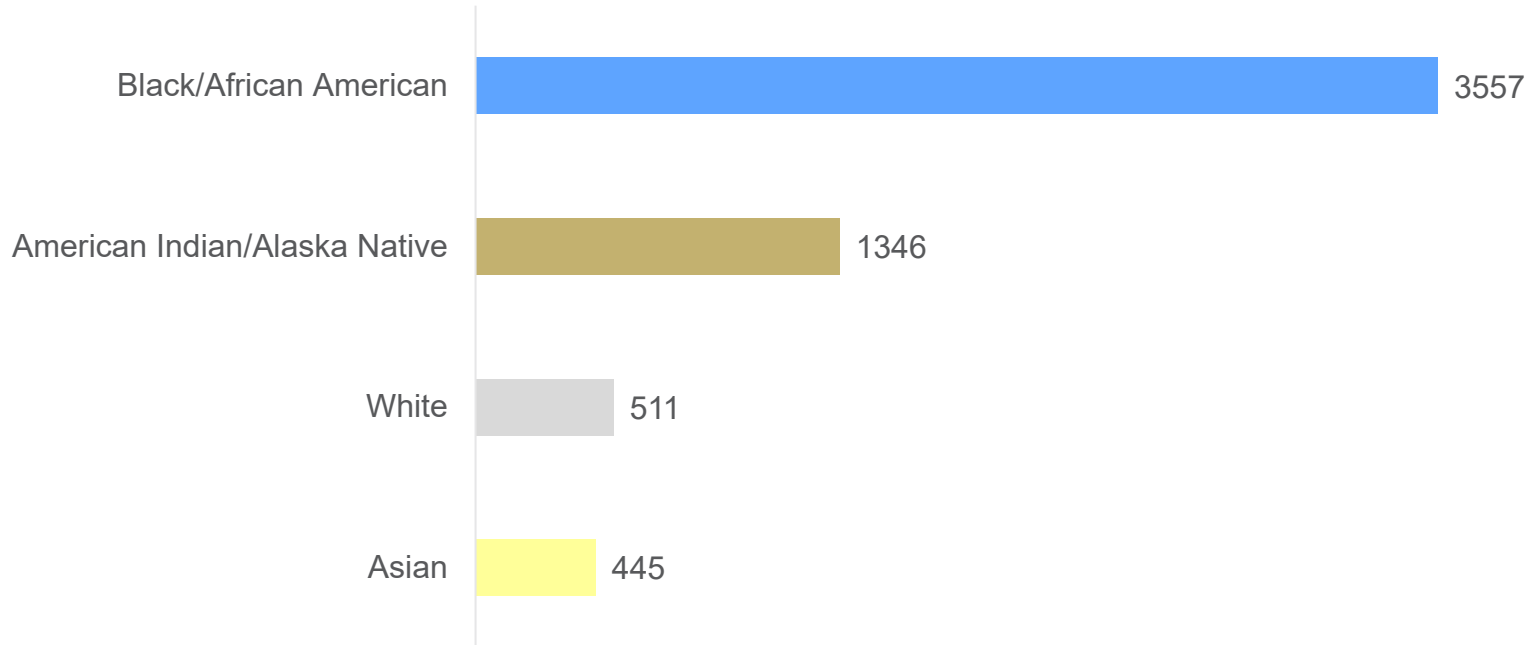
Source: Centers for Disease Control and Prevention (CDC) National Center for Health Statistics (NCHS), Division of Vital Statistics, Natality public use data 2018 (via CDC WONDER)

Notes: The share of babies born weighing less than 5 pounds 8 ounces (<2,500 grams) out of all births.

*Data quality are marginal for Black, non-Hispanics and Hispanics in Washington.

Black youth are arrested at nearly 7 times the rate of white youth. American Indian youth are arrested at over 2.5 times the rate of white youth.

Arrests by Ramsey County law enforcement agencies per 100,000 youth (10-17 years old) by race, 2020



Key Takeaways

- Racial disparities continue to exist. Intentional policy and investment in racially and ethnically diverse communities is needed long-term.
- Research, data analysis, and evaluation have strong impact and value.
- Refine performance measures to better connect, collaborate, and align with community, regional partnerships, and key stakeholders.

What to Expect in Service Team Presentations:

- Service Team vs. Departmental Performance Measures
- Stronger tether to Ramsey County's vision, mission, goals, core values, and strategic priorities
- Advancing racial equity and community engagement
- Service teams working within and across one another and cross-county connections
- Prioritizing our strategic priorities and investments
- Anti-racist Results-Based Accountability

Accountability Model

Strategic Priority

	Quantity	Quality
Effort	<i>How much did we do?</i>	<i>How well did we do it?</i>
Effect	<i>Is anyone better off?</i>	



Key Questions in Coaching Sessions by CEI:

1. WHAT IS THE PROBLEM WE ARE TRYING TO SOLVE?
2. WHAT IS OUR DESIRED RESULT?
3. WHO IS THE TARGET AUDIENCE WE SEEK TO IMPACT?
4. WHAT ARE THE ROOT CAUSES OF CURRENT PERFORMANCE?
5. HOW DO WE KNOW IF THE TARGET AUDIENCE IS BETTER OFF?
6. HOW IS THE MEASURE ANTIRACIST? (IS THE MEASURE DISAGGREGATED BY RACE)?
7. HOW WILL IT HELP RAMSEY COUNTY MAKE RACIALLY EQUITABLE DECISIONS?)

What to Expect in Service Team Presentations:

- Shortened service team presentations led by leaders and Performance Management Action Teams (PMATs)
- Please ask questions of clarity of certain points during presentations but reserve general comments or broad questions at the end
- Full narratives and performance measures will be on the Open Data Portal
- Full Supplemental Budget timeline here



WELL-BEING



PROSPERITY



OPPORTUNITY



ACCOUNTABILITY