



RAMSEY COUNTY, MINNESOTA



RAMSEY COUNTY 2010

A FINANCIAL REPORT TO CITIZENS

TABLE OF CONTENTS

The Year in Review	1
About Ramsey County	2
Issues & Trends	7
County Functions	10
Financial Statements	19



The 2010 Ramsey County Board of Commissioners

Top Row, Left to Right: Jan Parker (2nd District); Tony Bennett (1st District); Jim McDonough (6th District); Toni Carter (4th District);

Bottom Row, Left to Right: Janice Rettman (3rd District); Chair Victoria Reinhardt (7th District); Rafael Ortega (5th District)

Cover Photo: The City of St. Paul, the County Seat and State Capital, along the Mississippi River

THE YEAR IN REVIEW

Welcome to the Popular Annual Financial Report (PAFR) for Ramsey County. Our 2010 PAFR provides a general overview of the County's financial position in 2010 and highlights our important initiatives from throughout the year.

This PAFR provides an easy-to-read summary of the County's Comprehensive Annual Financial Report (CAFR) that contains more detailed financial statements, schedules, statistics and notes for the year. We welcome you to read the CAFR on the County's website at www.co.ramsey.mn.us. While there, we encourage you to browse the rest of the website to learn about all the ways the County serves its citizens, including special events and public notices.

The County responds to changing community needs by listening to its residents and delivering innovative and collaborative programs. Throughout the next several pages, you will have an opportunity to see how Ramsey County performed financially in 2010, as well as to understand the on-going services that are provided to the public.

As in previous years, Ramsey County continues to be financially sound and is well-managed by a dedicated County Board and professional staff.

Thank you for your interest in Ramsey County and its Popular Annual Financial Report. We hope this document is informative and interesting.

Comments, questions and suggestions can be addressed to the Ramsey County Office of Budgeting and Accounting, Suite 270, 15 West Kellogg Boulevard, Saint Paul, MN 55102. For more detailed information regarding Ramsey County's financial status for 2010, please view our CAFR on the County's website at: www.co.ramsey.mn.us.



Julie Kleinschmidt
Ramsey County Manager



Lee Mehrkens
Chief Financial Officer

ABOUT RAMSEY COUNTY

Population

Ramsey County is a fully developed urban center that has the second largest county population in Minnesota and the smallest land area. It is the most densely populated county in Minnesota with a population of 506,278. Saint Paul is the largest city within the County (with a population of 285,068 or 56% of the residents) and is also the state capital. The suburban area includes communities that range in size from Gem Lake (393 people) to Maplewood (38,018 people), according to Metropolitan Council 2010 estimates.

Ramsey County is very diverse. The largest minority populations of those who are one ethnicity alone are Asian (9.9%) and African American (9.6%). About 6.6% of the people have a Hispanic or Latino ethnic background (U.S. Census Bureau 2009 American Community Survey).

Income

Income in Ramsey County is slightly below the national average. The Census Bureau estimates the 2009 median household income is \$47,660 compared with the national median of \$50,221. About 11.1% of families were below the poverty level, compared to 10.5% nationally.

Education

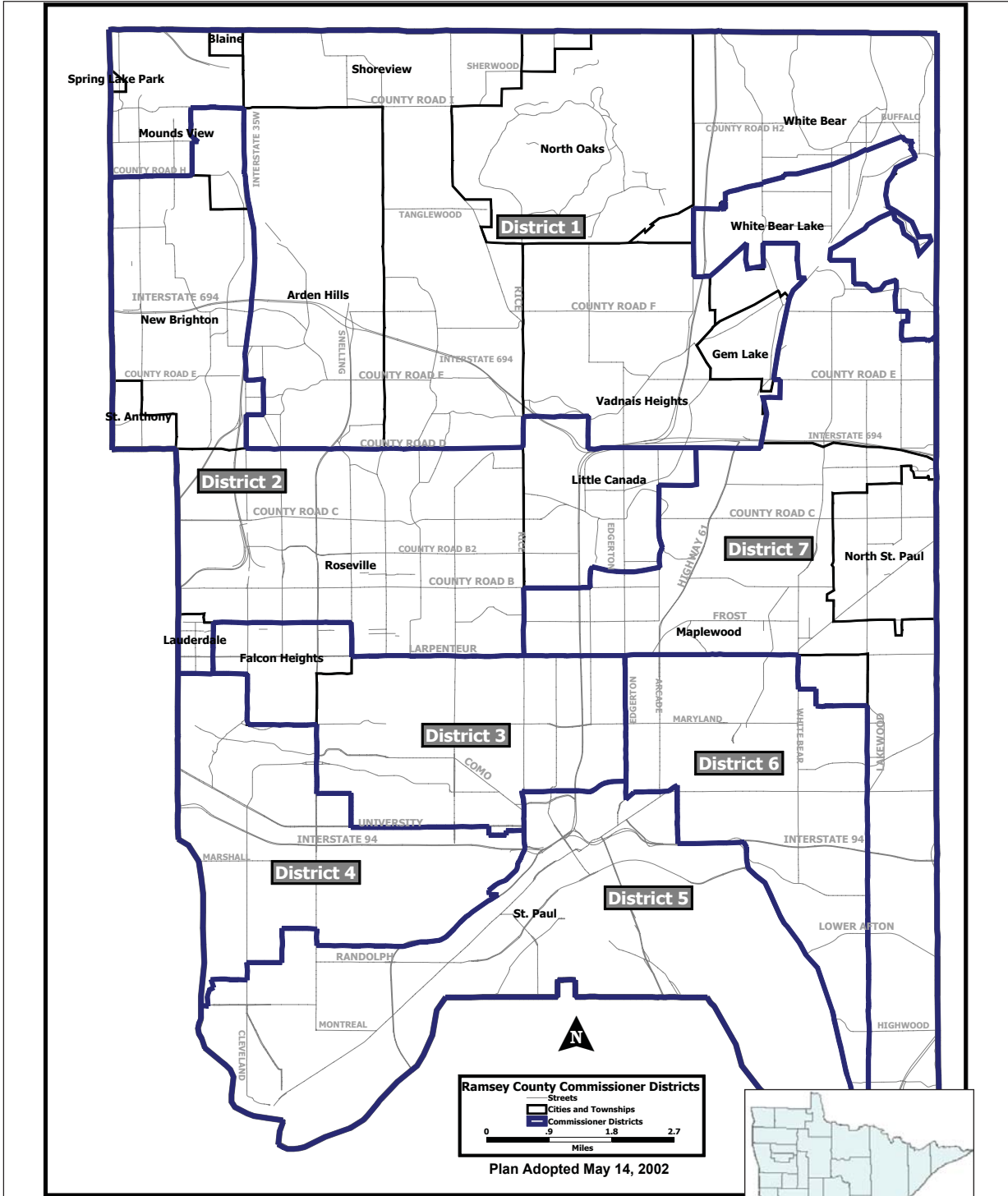
Ramsey County has a well-educated population. Of the people 25 and over, 15% have a graduate or professional degree compared to the U.S. rate of 10.3%. About 39.1% have a bachelor's or higher degree and 89.7% have completed high school, compared to national rates of 27.9% and 85.3% respectively. In addition, it is home to more colleges and universities than any other county within Minnesota. According to the U.S. Census Bureau, 80,036 students were in grades K-12 in 2009.

Jobs

Ramsey County is a major employment center that draws people from surrounding counties to fill the need for employees. Ramsey County's labor force is 274,993. Ramsey County is home to many of Minnesota's largest employers including 3M Company, U.S. Bancorp, Health East, and United/Children's Hospital. Ramsey County's unemployment rate remains below national and state averages. In 2010, the average unemployment rate within the County was 7%, whereas the national and state unemployment rates were 9.6% and 7.3% (U.S. Bureau of Labor Statistics).

County Government

Ramsey County was organized on October 27, 1849 and named for Alexander Ramsey, Minnesota's first Territorial Governor. A seven-member Board of Commissioners elected by district for staggered four-year terms governs the County. The County Attorney, Sheriff, and Judges are also elected officials. The Commissioners are responsible for establishing strategic direction for the County, creating policies and adopting a biennial budget. The County Manager is responsible for carrying out the policies of the Board of Commissioners, overseeing the day-to-day operations of the County, and appointing department directors. In 1990, Ramsey County citizens voted to become the first and only Home Rule Charter County in Minnesota. Adopted in 1992, the Charter authorizes more autonomy to the County for local governance.



Map of Ramsey County Commissioner Districts



Ramsey County, Minnesota

Ramsey County Mission Statement

Ramsey County - Working With You to Enhance Our Quality of Life

Values Statement

Ramsey County is community centered and serves the citizens with integrity, honesty, respect, innovation, and responsibility.

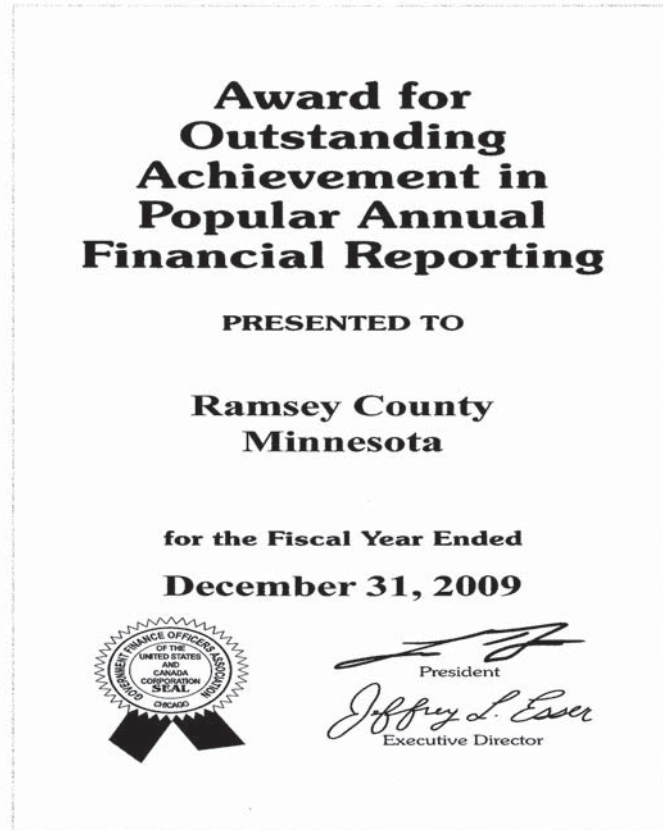
Goals

- Be a leader in financial and operational management
- Promote multi-modal transit and transportation solutions that effectively serve our citizens
- Prevent crime and improve public safety
- Be a leader in responding to the changing demographics in Ramsey County
- Proactively deliver services that improve the quality of life for children and families, and individuals with special needs
- Protect our natural resources and the quality of our environment

AWARDS AND RECOGNITION

- **Distinguished Budget Presentation Award** from the Government Finance Officer's Association (received continuously since 1983).
- **Certificate of Achievement in Excellence in Financial Reporting** from the Government Finance Officer's Association (received in 2010 for 2009 financial statement preparation).
- **GFOA Award for Outstanding Achievement in Popular Annual Financial Reporting** (received for the first time in 2010 for the 2009 Popular Report).
- **AAA Bond Rating.** Ramsey County is one of only 53 counties nationwide (of 3,066 total U.S. counties) and four counties in Minnesota to receive a AAA/Aaa credit rating, the highest possible credit rating from both Moody's and Standard & Poor's rating agencies (in the top 1.7% of counties).
- Became the **only County in Minnesota** to earn the GFOA's annual awards for excellence in the CAFR, PAFR, and Distinguished Budget Presentation along with having a top bond rating by rating agencies.

2010 ACCOMPLISHMENTS

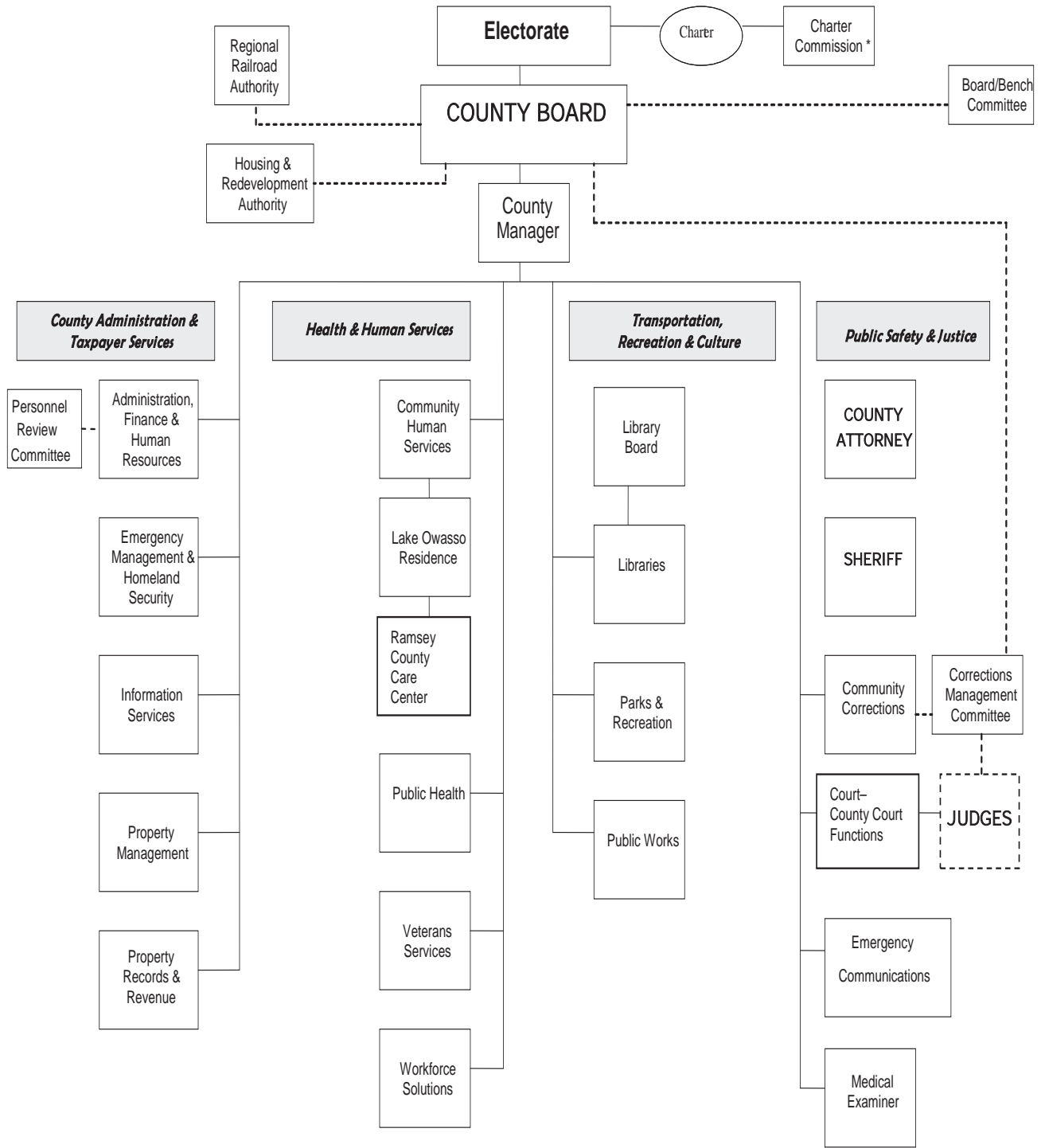


The Government Finance Officers Association of the United States and Canada (GFOA) has given an Award for Outstanding Achievement in Popular Annual Financial Reporting to Ramsey County for its Popular Annual Financial Report for the fiscal year ended December 31, 2009. The Award for Outstanding Achievement in Popular Annual Financial Reporting is a prestigious national award recognizing conformance with the highest standards for preparation of state and local government popular reports.

In order to receive an Award for Outstanding Achievement in Popular Annual Financial Reporting, a government unit must publish a Popular Annual Financial Report, whose contents conform to program standards of creativity, presentation, understandability and reader appeal.

An Award for Outstanding Achievement in Popular Annual Financial Reporting is valid for a period of one year only. We believe our current report continues to conform to the Popular Annual Financial Reporting requirements, and we are submitting it to GFOA.

RAMSEY COUNTY ORGANIZATIONAL CHART



BOLD Elected

--- Policy

State of Minnesota

* Appointed by District Court

Issues & Trends:

THE ECONOMIC CRISIS AND RAMSEY COUNTY FAMILIES

In Ramsey County in 2010, families struggled with lost jobs, foreclosures and other challenges. During an economic crisis, counties provide assistance and programs that keep people fed, clothed, sheltered and safe. We've never seen anything like the "Great Recession." People came to our shelters and food shelves who had never before asked for assistance. Caseloads rose at staggering rates. Some of the community impacts of this recession are highlighted below.

Ramsey County Economic Indicators

- Food stamp usage increased sharply: 23% from 2009, 82% from 2005.
- Medical Assistance cases increased: 7% from 2009, 20% from 2005.
- More than one in five children (24,927) live in poverty.
- People looking for jobs flocked to Workforce Solutions.
- Resource Room visits increased 11% from 2009, an increase of over 130% from 2006.
- Workshop attendance increased 185% from 2008 to 2009. Although the end of the ARRA funding reduced the number of workshops that could be offered in 2010, over 9,600 job seekers were able to attend a workshop in 2010.
- Foreclosures remained high in 2010, with 313% more foreclosures than in 2005.

More Need, But Fewer Resources to Meet that Need

During an economic recession more residents find themselves in need of county services, often on an emergency basis. At the same time, counties find it difficult to meet this sharply increased need because of declining State

and Federal revenues, levy limits, increased expenses and borrowing costs. As such, Ramsey County worked with government leaders at all levels, nonprofit organizations, businesses and community groups to find creative ways to meet these challenges.

Medical

Medical costs were a concern for residents. Requests for help with Health Care grew by 13% from 2005 to 2010; Health Care combined with Financial Assistance grew 28%. Active public assistance cases in Ramsey County increased 8% from 2009 to 2010, a 27% increase over 2005. Emergency Assistance requests rose by 36% from 2009 to 2010.

Food

For Food Assistance, the average monthly caseload was 25,346 in 2010, 23% higher than 2009. General Assistance cases increased 12% from 2009.

IN 2010, NEEDS INCREASED FOR FOOD ASSISTANCE, MEDICAL ASSISTANCE, JOB TRAINING, PUBLIC FINANCIAL ASSISTANCE, AND EMERGENCY SERVICES.

Issues & Trends:

RAMSEY COUNTY VETERANS SERVICES:

Building Partnerships and Integrating Technology to Improve Efficiency and Increase Capacity for our Veterans

Ramsey County Veterans Services Office (RCVSO) moved to 90 West Plato Boulevard in 2009 and in 2010 focused on improving how it serves the veterans of Ramsey County. Veterans can request services by calling the main number at 651-266-2545 to ask a question or make an appointment with one of three Veterans Service Officers.

The RCVSO website, AskVeterans@co.ramsey.mn.us gives Ramsey County veterans and their advocates the option to connect electronically with information and services by sending an e-mail.

Better use of technology has increased efficiency and capacity for the four permanent staff assigned to assist veterans and their families with accessing benefits. The Veterans Services Office took the first steps in the transition to a paperless process when veteran data software was implemented in 2010. Veteran records are now created in an on-line data system and information can be accessed by all staff. All forms and documents associated with filing claims and accessing benefits are scanned and available for virtual reference as each veteran moves through the benefits processes.

The Ramsey County Veterans Services Office has focused on finding better ways to work in cooperation with internal and external partners including the Minnesota Department of Veterans Affairs (MDVA), U.S. Department of Veterans Affairs, and Ramsey County Human Services and Public Health departments to improve information to the public about what benefits are available to veterans. Outreach and education are a critical part of engaging veterans and those who serve veterans throughout the County.

Focus on outreach by the Ramsey County Veterans Services Office is supported by MDVA with both staff and funding to do targeted outreach promoting County services. In addition, RCVSO is in the final stages of developing a coordinated marketing image and creating a whole new set of marketing materials using money provided by a state grant. Use of these new materials is anticipated in 2011 and a marketing plan will be developed to vastly improve the awareness of the services offered by the Ramsey County Veterans Services Office.



Issues & Trends:

TAMARACK NATURE CENTER:

Enriching people's lives by helping them discover the value of nature through art, play, exploration and inquiry

Valued as a first-choice destination for visitors and County residents alike, Tamarack Nature Center, owned and operated by Ramsey County Parks and Recreation Department, plays a vital role in increasing understanding and appreciation of our natural resources.

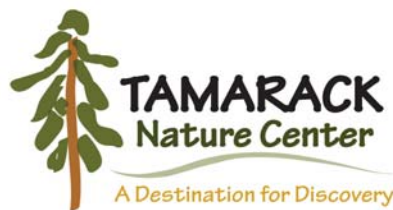
Serving over 50,000 visitors a year, the Center offers quality nature-based programs, educational outreach, interpretive exhibits, a nature preschool, seasonal recreation, and engaging volunteer opportunities for all ages.

Tamarack Nature Center, located in White Bear Township, is home to over 320 acres of beautiful woodlands, wetlands and prairies, as well as a variety of birds, animals, and critters that make Tamarack their seasonal home. For over 32 years, Tamarack has provided a nature rich environment in which to relax, renew, learn, and discover.

Guided by a new mission, a master plan and a commitment to growing the County's infrastructure for healthy living, Tamarack has embarked on a multi-phase, umbrella project entitled the Destination for Discovery. This project looks to strengthen the Nature Center's mission and expand opportunities for active engagement for children, families, and the public.

Phase One of the Destination for Discovery Project is now open to the public. This new site features a 2 ½ acre Nature Play Area with Interactive Play Stream, Discovery Garden, Children's Orchard and Garden House. Various sustainable elements have been incorporated including unique solar-powered petals that provide a portion of the Garden House electricity and permeable pavers to mitigate surface run off.

Following a diversified development plan, the project has received funding from Minnesota State Bonding, the Metropolitan Council, the Legislative Citizens Committee on Minnesota Resources (LCCMR), Clean Water Land & Legacy Act, the Institute of Museum and Library Services (IMLS), corporate and organizational sponsorships, and public donations.



5287 Otter Lake Road, White Bear Township, MN 55110
www.co.ramsey.mn.us/parks/tamarack 651-407-5350

"We are thrilled about the expanded interpretive opportunities, exhibits and programming the Destination for Discovery supports", shares Mary Vidas, Director at Tamarack Nature Center. "Our knowledgeable staff and wonderful volunteers look forward to continuing their service to the public in providing authentic connections to nature and this valued nature park preserve. We encourage folks of all ages to stop by for their daily dose of Vitamin N-nature that is!"

PUBLIC SAFETY AND JUSTICE SERVICES

Public Safety is a primary concern for Ramsey County, with services provided by the Sheriff's Department, County Attorney's Office, Court system, Emergency Communications, Medical Examiner, and Community Corrections.



Sheriff's Department

The Sheriff's Department provides crime prevention and law enforcement services and operates the pretrial detention facility (jail) used by all the local law enforcement agencies in the County. The Sheriff's Department also provides patrol services within certain municipalities.

In 2010, the Sheriff's Department:

- Cleared 73% of warrants;
- Housed a daily average of 385 inmates at the Law Enforcement Center.

Community Corrections

Community Corrections has three goals: enhancing community safety, holding offenders accountable for repairing the harm they caused to victims and the community, and engaging offenders in the process of developing the competencies they need to remain law abiding. Community Corrections staff carry out the decisions of the court system and implement conditions of probation and treatment plans for juveniles and adults. The department also operates three institutions that detain juveniles and adults after conviction.

Community Corrections in 2010:

- Provided probation services to 23,150 adults and 2,210 juveniles;
- Data released by the State regarding recidivism in the metro area reflects that 84% of felony-level offenders remained felony conviction free within three years post supervision.

County Attorney's Office

The County Attorney prosecutes adult and juvenile offenders who have committed crimes in Ramsey County and collects child support. The County Attorney also provides legal advice and counsel and represents county agencies in legal matters.

In 2010, the County Attorney's Office:

- Assisted more than 10,000 families who shared in child support collections of \$55 million;
- Reduced the average time to charge a felony case from 18 days in 2007 to 4 days.

PUBLIC SAFETY AND JUSTICE SERVICES

Emergency Communications

Emergency Communications answers 911 and non-emergency telephone calls and provides multi-agency dispatching services for law enforcement, fire and emergency medical responders.

2010 Statistics and Highlights:

- The Emergency Communications Center answered a total of 786,018 calls: 312,814 were 911 calls and 473,634 were calls on non-emergency lines;
- The average answer time was 4.6 seconds;
- Provided technical support for over 4,000 mobile and portable 800 MHz radio users.



Emergency Communications Dispatching Center

Medical Examiner

The Ramsey County Medical Examiner investigates deaths to provide a truthful and unbiased account to Ramsey County residents, law enforcement, and all appropriate agencies as well as the judicial system. The Medical Examiner's Office also responds to death scenes and conducts investigations daily, at all hours.

2010 Statistics and Highlights:

- Performed a critical role in helping law enforcement clear 82% of homicides;
- Worked diligently with tissue procurement organizations and surviving family members to accomplish many successful tissue donations.

Court System

The Second Judicial District Court (Ramsey County) is a unified trial court with general jurisdiction to hear all types of civil and criminal cases. The Court has a total of 29 judges, five referees and one magistrate. Judges can hear any criminal or civil matter brought before them, so they are assigned to various calendars as determined by the Chief Judge who has the authority to assign judges and referees. The main Courthouse is located in downtown St. Paul. The Second District is legislatively mandated to maintain a suburban court site, which is located in the city of Maplewood. Courtroom space is also provided at the County's Law Enforcement Center and the Juvenile and Family Justice Center.

TRANSPORTATION, RECREATION AND CULTURAL SERVICES

Recreational activities are essential for a healthy and fun lifestyle. Ramsey County offers a wealth of opportunities for recreation, both indoors and out. The County boasts parks, lakes, and golf courses among its many outdoor options that enhance the quality of life for the people of Ramsey County.

Also included in this function are important departments such as Public Works, which maintains the roadways within the borders of Ramsey County, and seven Ramsey County Libraries.



Battle Creek Waterworks provides summertime fun for the entire family

Parks & Recreation

Green Spaces, Fun Places, Active Lives

Ramsey County maintains over 6,500 acres of parks, trails, open space and recreation areas for its residents and serves over five million visitors annually. Each park area has a unique charm and includes facilities for one or more of the following: hiking, biking, cross-country skiing, picnicking, children's play, nature study, swimming, boating, fishing, sledding, archery and off-leash dog activities. Residents from throughout Ramsey County and the region use these facilities and enjoy the convenience of nearby areas that bring nature and outdoor enjoyment into their lives.

Ramsey County Parks and Recreation:

- Operates 5 golf course and 10 ice arenas;
- Is one of 10 Implementing Agencies for the Metropolitan Regional Park System and receives Regional and State Grants to acquire, develop, restore, operate, and maintain its regional parks and trails. Ramsey County maintains nine County parks, six regional parks, and six regional trails;
- Is responsible for the management of more land than any other entity in the County;
- Provides access to most lakes in the County, encompassing over 11,000 acres of water for boating and fishing and nine County beaches.

TRANSPORTATION, RECREATION AND CULTURAL SERVICES

Public Works

The Ramsey County Public Works Department constructs, repairs and maintains roads, maintains and protects a lake system, and conducts land surveys. The Public Works Department is responsible for maintenance and construction of 295 miles of roads and bridges, installation and maintenance of traffic control devices, and snow and ice removal. The Department is also charged with lake improvement for 29 lakes, including drainage management, access ramps, water quality, and shoreline erosion control.

Public Works in 2010:

- Recycled 100% of pavement removed on County roads and also utilized recycled parts in construction projects such as aggregates and bituminous millings;
- Reduced the use of sand and salt usage by 30% since 2000 as part of snow and ice control operations.



The new Roseville Library opened its doors in 2010

Libraries

With seven libraries, Ramsey County provides a wide variety of services to its residents including childhood programs, library materials, and digital access to information. To address increasing demand for materials, the Libraries are investing heavily in automation and building improvements to improve workflow.

In 2010, the Ramsey County Libraries:

- Circulated approximately 4.5 million items;
- More than 20,000 new customers signed up for library cards;
- The Library website had almost 1.6 million visits, up 7% over 2009;
- Over 46,000 people attended Library programs in 2010;
- The newly expanded and remodeled Library in Ramsey County Library in Roseville reopened in July 2010 to huge demand. Compared to business in the old facility, circulation increased 14%, visits were up 15%, library card registrations increased by 60%, and the number of reference questions answered was up by 33%.

HEALTH & HUMAN SERVICES

The Ramsey County Health and Human Services function serves to meet basic human needs by providing protection and assisting clients in achieving self-sufficiency. The departments in this function are responsible for providing financial, mental health, social, and job training services to a variety of groups including low income, elderly, disabled, homeless, mentally ill, abused, and vulnerable children and adults.

Community Human Services (CHS)

CHS receives a combination of federal, state, and local funds to administer and deliver services to children and families, low-income and homeless, elderly and physically disabled, chemically dependent, mentally ill, and developmentally disabled residents. On any given day in 2010, CHS had approximately 114,000 clients/service consumers.

CHS's mission is "Making a Difference: Helping People Survive and Thrive" by providing resources to meet basic needs, assuring protection for the vulnerable, and assisting self-sufficiency, all in the most cost effective manner possible.

In 2010, Community Human Services:

- Took 43,653 applications for clients applying for financial and medical assistance, and food support;
- Took 1,265 intake reports of child maltreatment;
- Provided 100% of children in crisis with a mental health assessment within 24 hours;
- Finalized 72 adoptions;
- Took 5,821 admissions into the Detoxification Center; and
- Provided case management services to approximately 5,889 adults and children with disabilities.



The St. Paul-Ramsey County Department of Public Health

Saint Paul – Ramsey County Public Health's mission is to improve, protect and promote the public health. The department provides a diverse range of services as it carries out federal and state mandates to prevent the spread of disease, protect against environmental hazards, prevent injuries, promote healthy behavior, respond to health emergencies, and assure accessibility of health services.

Public health services provided to County residents in 2010 included:

- Vaccinating 8,100 adults and children to prevent infectious diseases;
- Helping 31,274 low-income mothers, infants and young children get supplemental nutritious foods, and information on health, nutrition and breastfeeding;
- Collecting 1.38 million ton of hazardous waste from 26,716 visits by County residents to household hazardous waste collection sites;
- Providing 21,937 nurse home visits to 4006 individuals;
- Performing 33,149 tests at the Public Health Lab;
- Making 81,356 nursing care contacts at the Ramsey County Correctional Facility and Juvenile Detention Center.

HEALTH & HUMAN SERVICES

Lake Owasso Residence

The Lake Owasso Residence provides licensed residential services to adults with developmental disabilities and complex medical and social needs.

Lake Owasso Residence provides 64 adults with developmental disabilities programming and medical services to prevent regression or loss of functional ability and promote self determination and independence. Eight one-level homes are provided for adults with separate bedrooms and common areas in a campus setting in Shoreview.

Ramsey County Care Center

The Ramsey County Care Center (formerly Ramsey Nursing Home) has been serving the community since 1854 and is built on a commitment to serving residents and their families. The County operates the Ramsey County Care Center to support its residents. Here, elderly citizens are provided the necessary services to live healthy, dignified, and full lives.

Ramsey County Care Center's 26 bed Transitional Care Unit combines the advantages of rehabilitation and long-term care with the services of an acute care hospital. The goal is for each patient to achieve the highest level of independence through individualized treatment plans. The Care Center also provides residential long-term care for 152 residents.

Highlights of the Ramsey County Care Center:

- A beautiful courtyard with walking paths, gazebos, gardens, and wheel chair accessible glider;
- Spacious private and double rooms;
- A private 2-room suite with sofa sleeper;
- Therapy up to six days a week.



The Ramsey County Care Center provides support to elderly residents by providing the necessary care and services to live healthy, dignified, full lives. The Care Center also recently built a Transitional Care Unit for residents recovering from injury.

Workforce Solutions

Workforce Solutions' mission is to strengthen the economic success of our community through personalized and effective workforce development. Workforce Solutions does this by providing employment counseling and training opportunities to job seekers, and various support services to employers.

In 2010, Workforce Solutions:

- Helped over 18,316 clients search for employment, a 16% increase over the previous year; and
- Helped over 825 laid off workers secure new employment

Veterans Services

The Ramsey County Veteran Services Office (RCVSO) provides guidance, assistance and advocacy to the veterans and active military service members of Ramsey County, their dependents and survivors. The staff of Ramsey County Veterans Services are available to assist with applying for all veteran's benefits provided by the Minnesota Department of Veterans Affairs (MDVA) and the United States Department of Veterans Affairs (VA).

TAXPAYER SERVICES AND COUNTY ADMINISTRATION

The Taxpayer Services and County Administration function covers a wide range of vital County services. This function includes the Ramsey County Board of Commissioners, County Manager's Office, Property Management, Information Services, as well as Property Records, Revenue, and Elections. Information Services maintains the County's technical infrastructure. Property Management is charged with maintaining the buildings and grounds that are owned by Ramsey County. Property Records, Revenue, and Elections handles real estate documents and appraisals.



St. Paul City Hall/Ramsey County Courthouse

Property Management

The Property Management Department provides facility and project management services for County owned and leased buildings. The Department manages over 2 million rentable square feet in 21 major County owned buildings.

In 2010, Property Management:

- Continued to provide quality building services while maintaining an operating cost per gross square foot of \$6.31 for their buildings.
- Instituted a "Green Cleaning" program resulting in the elimination of 74 potentially hazardous cleaning products and introduced 41 Green Seal Certified cleaning products.
- Provided voice technology services to more than 6,900 County, City of St. Paul, and Minnesota 2nd Judicial District Court users.

- Completed the design work and began construction of the East Metro Behavioral Health Crisis Center. This project will be completed in July, 2011.
- Completed the design work and began remodeling of the Metro Square Office Building. This project will be completed in 2011.
- Vacated the old Arden Hills Library and prepared it for sale, while designing and constructing a new library in the New Brighton Community Center to continue library services to the residents of the Arden Hills/New Brighton area. This project will be completed in 2011.

County Board and Administration

This functional area includes operations and funding for the County Board and County Manager's Office, including Human Resources, Budgeting and Accounting, and Emergency Management.

TAXPAYER SERVICES AND COUNTY ADMINISTRATION

Information Services

IS manages the County's computer technology infrastructure, application and web development and support, electronic document management, HIPAA and data practices, geographic information systems, computer training and technology acquisition.

Property Records and Revenue and Elections

Property Records and Revenue is responsible for the oversight of activities involved in recording property ownership, valuing property in the County, and collecting and distributing property taxes. The Department is also responsible for the facilitation of state, local, and national elections.

In 2010, the Examiner of Titles Office issued 1,575 Directives and Certificates of Examiner, reported on 983 title defect cases, and conducted 1,618 hearings.

The Recorder's Office recoded, indexed, and returned over 92,000 real estate documents to customers.

Property Tax Services had over a million communications with customers via mail, the phone, email, and the web. It also maintains current and historical information on property values, taxes, and services on its website at www.co.ramsey.mn.us/prr.

The Assessor's Office completed 30,741 property reappraisals and 2,882 review appraisals.



Ramsey County has a wide variety of services available on its website. Here, you can find anything from how to do business with Ramsey County, to job openings, to information on the public golf courses throughout the County. All of this and more can be found at www.co.ramsey.mn.us.

Other Funding Areas

In addition to the various departments listed in this report, the County provides funding to the Ramsey Conservation District, Ramsey County Historical Society, the Ramsey County Landmark Center, and the County Extension Service.

REGIONAL RAILROAD AUTHORITY

The Ramsey County Regional Railroad Authority was organized in 1987 by the Ramsey County Board of Commissioners. The Authority is dedicated to a long-range vision of transit services to meet changing needs for today and for succeeding generations.

The Ramsey County Regional Railroad Authority is composed of the seven members of the Ramsey County Board of Commissioners.

In 2010, the Ramsey County Regional Railroad Authority participated on the Red Rock Corridor Commission, Rush Line Corridor Task Force, Midwest High Speed Rail Association, Northeast policy Advisory Committee, Robert Street Steering Committee, Central Corridor Partnership, Minnesota High Speed Rail Commission, Gateway Corridor Commission, and the Counties Transit Improvement Board (CTIB). CTIB is a joint powers organization that includes members from Ramsey, Anoka, Dakota, Hennepin, and Washington Counties. These CTIB counties voted to impose an excise and sales tax to fund transitways in their counties.

In 2010, the Ramsey County Regional Railroad Authority made its final payment on the purchase of the Post Office concourse, furthering plans to implement the Union Depot as a multi-modal transit hub as the next stage in the metro region's transportation future. A revitalized Union Depot will blend transit modes that exist today with others that are programmed in the region's long-range plan in one historic location. It will serve regional, state, and community needs.

Commuters and visitors arriving on trains from the Central Corridor LRT Line will connect with local transit lines to get to jobs, government services, pro sports and entertainment venues, shopping and restaurants.

For more information on the transit plans set forth by the Regional Railroad Authority, please visit their website at www.regionalrail.org.



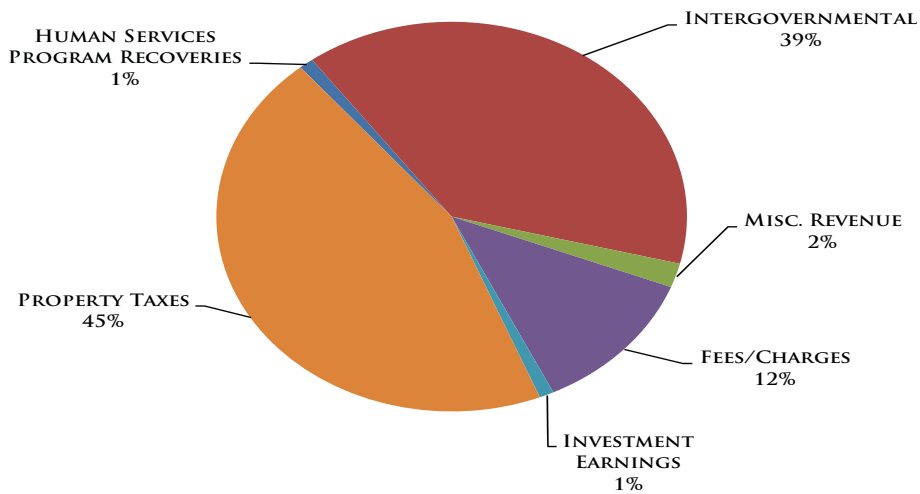
Renovation of the historic Union Depot began in 2010 and will be completed in 2012 as a multi-modal transportation hub, bringing together local and regional bus service, light rail, Amtrak, bikes, and pedestrians.

FUND FINANCIAL STATEMENTS

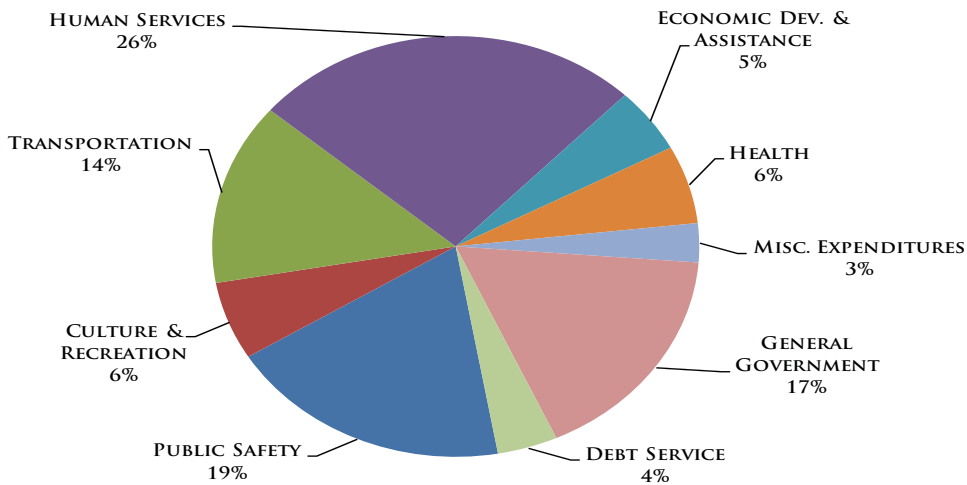
This section presents summarized financial statements for the County. The County uses two formats for presenting its financial statements. Government-wide, which is similar to a private sector business, shows a broad overview of the County's financial standing and reflects a long-term focus. The fund financial statements, on the other hand, provide a look at an individual fund's assets, liabilities, and fund balance and reflects a short-term focus. For more detailed financial statements, please refer to the County's Comprehensive Annual Financial Report (CAFR) found on the County's website at www.co.ramsey.mn.us/ba/index.htm.

The information presented in these graphs is derived from the fund financial statements.

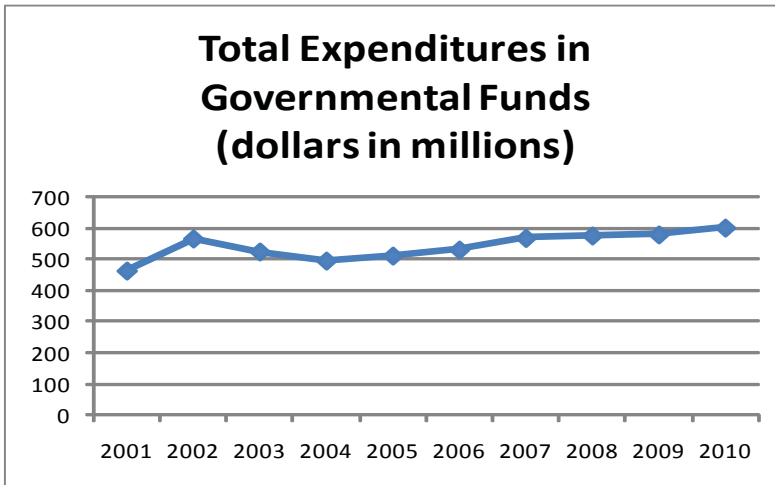
Where the County Dollar Comes From...



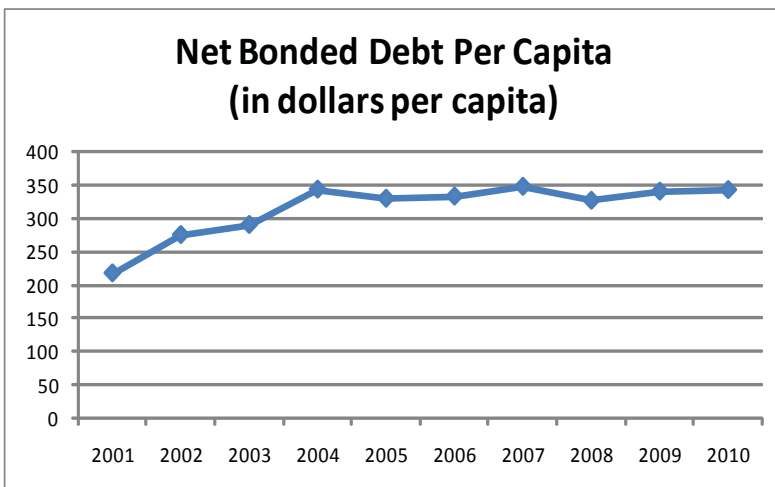
Where the County Dollar Goes...



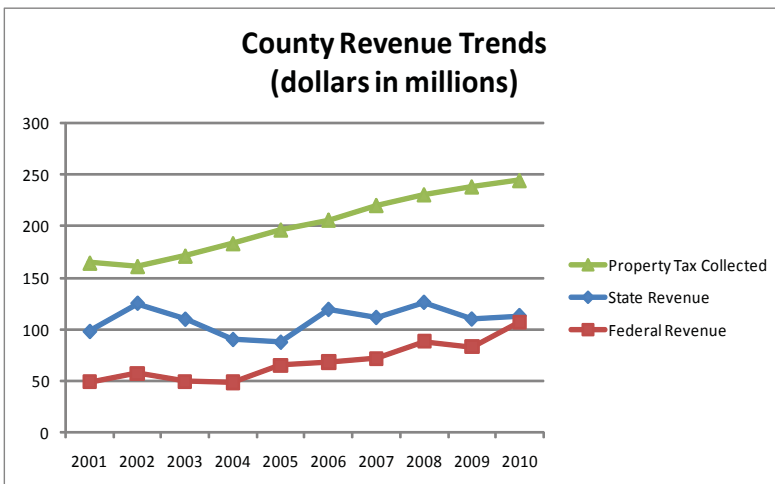
MULTI-YEAR FUNDING TRENDS



Total County expenditures have increased from a recent low in 2004 and are now at funding levels similar to 2002. Total County expenditures across all governmental funds were \$602,616,728 in 2010.



Low interest rates and rapid repayment have resulted in manageable debt levels for the County despite an active capital improvement program to replace and rehabilitate aging facilities and public infrastructure. Debt ratios fall within the low to moderate benchmark set by credit rating agencies for “triple A” counties.



The Ramsey County property tax levy has been trending upward since 2001, primarily as a result of flat or reduced State aid. Property taxes provided 36% of the County’s budget in 2001, but increased to 45% by 2010. State aid has failed to keep pace with population growth, increased service demands and inflationary cost pressures. State revenues include County Program Aid, Market Value Homestead Credit Aid, categorical grants and road construction funding.

GOVERNMENT-WIDE STATEMENTS

The information presented in the following section is derived from the government-wide financial statements.

STATEMENT OF NET ASSETS

	Total				
	2006	2007	2008	2009	2010
Assets					
Total Current & Other Assets	\$ 401,228,779	\$ 489,041,114	\$ 487,479,598	\$ 503,952,295	\$ 470,573,223
Total Capital Assets	600,498,623	609,945,976	623,878,928	647,810,114	701,393,946
Total Assets	\$ 1,001,727,402	\$ 1,098,987,090	\$ 1,111,358,526	\$ 1,151,762,409	\$ 1,171,967,169
Liabilities					
Total Current Liabilities	\$ 89,690,050	\$ 105,661,796	\$ 91,059,762	\$ 105,391,097	\$ 90,014,721
Total Non Current Liabilities	218,810,097	277,497,428	274,872,847	276,154,538	290,774,883
Total Liabilities	\$ 308,500,147	\$ 383,159,224	\$ 365,932,609	\$ 381,545,635	\$ 380,789,604
Net Assets					
Invested in Capital Assets					
Net of Related Debt	\$ 440,548,748	\$ 436,875,868	\$ 463,216,707	\$ 495,279,089	\$ 507,896,299
Restricted	84,726,534	71,157,995	61,904,201	64,652,023	61,769,571
Unrestricted	167,951,973	207,794,003	220,305,009	210,285,662	221,511,695
Total Net Assets	\$ 693,227,255	\$ 715,827,866	\$ 745,425,917	\$ 770,216,774	\$ 791,177,565

The Statement of Net Assets presents the County's capital and cash assets, minus the current liabilities such as payables and long-term debt. The resulting amount is stated as "net assets." The table above shows that the County has increased its total net assets by 1.8% between 2009 and 2010.

Below you will find some highlights and explanations of major changes to our Statement of Net Assets from 2006 to 2010.

Assets and Liabilities:

- Total Assets increased 7 percent over the past 5 years. The major changes were adding the Union Depot and completing various road construction projects.
- Total Current & Other Assets decreased in 2010 in large part due to the Union Depot being transferred from a Current to Capital Asset.
- Liabilities increased a like amount to finance these capital projects.

Net Assets Invested in Capital Assets:

- Total Net Assets increased 14% over the past 5 years and average a 3.5% increase annually.

Capital Projects:

- Slightly more than two-thirds of the County's assets are classified as Net Assets giving the County greater flexibility in paying its obligation on time and qualifying it for the best credit rating available.

STATEMENT OF ACTIVITIES

	<u>2006</u>	<u>2007</u>	<u>2008</u>	<u>2009</u>	<u>2010</u>
Program Revenues	\$ 303,112,833	\$ 325,668,329	\$ 310,685,061	\$ 294,939,025	\$ 326,035,328
General Revenues	274,598,464	286,105,640	292,845,464	295,560,749	300,953,445
Total Revenues	577,711,297	611,773,969	603,530,525	590,499,774	626,988,773
Program Expenses	509,799,940	589,173,358	573,932,474	566,536,332	606,027,982
Increase/(Decrease) in Net Assets	67,911,357	22,600,611	29,598,051	23,963,442	20,960,791
Net Assets -Beginning	625,315,898	693,227,255	715,827,866	746,253,332	770,216,774
Net Assets - End	<u>\$ 693,227,255</u>	<u>\$ 715,827,866</u>	<u>\$ 745,425,917</u>	<u>\$ 770,216,774</u>	<u>\$ 791,177,565</u>

*Restated due to implementation new accounting rule GASB #51

The Statement of Activities presents the County's change in net assets over a given period. This statement does not take into account the timing of related cash flows. The County's total revenue increased by 8.5% between 2006 and 2010. Revenue reductions in 2008 and 2009 were largely the result of cutbacks in State funding and lower earnings on investments due to the economic downturn. To offset these revenue reductions the County instituted cost-containment measures including service reductions and leaving vacant positions unfilled. These cost-containment measures are reflected in the 1.3% decrease in expenses between 2008 and 2009. Revenue increases in 2010 were the result of receiving Federal stimulus funds that are expected to sunset in future years.

Ramsey County strives to balance our residents' ability to pay with the need for essential services in difficult economic times. Ramsey County has proven to be a fiscally responsible government, and will continue to provide essential services while maintaining strong financial management.

Program expenses increased 18.9% from 2006 to 2010, averaging 4.6% annually. Much of the increase occurred by receiving Federal and State grants targeting human services and providing assistance to unemployed workers in the County either through training or employment assistance services.

CAPITAL ASSETS AND DEBT MANAGEMENT

Capital Assets (Net of Depreciation) Five Year Trend

	2006	2007	2008	2009	2010
Land	\$ 80,347,286	\$ 85,263,765	\$ 90,822,760	\$ 98,308,534	\$ 137,475,719
Buildings & Improvements	209,136,859	223,590,425	238,472,223	242,359,932	257,961,015
Improvements Other Than Buildings	18,345,932	17,428,342	18,714,743	17,603,520	17,191,520
Equipment	13,764,817	29,669,913	29,166,220	27,076,007	25,933,752
Computer Software	-	-	-	760,181	692,947
Infrastructure	184,938,996	186,911,000	184,420,970	192,191,207	213,005,364
Construction in Progress	93,964,733	67,082,531	62,282,012	69,510,733	49,133,629
Total	\$ 600,498,623	\$ 609,945,976	\$ 623,878,928	\$ 647,810,114	\$ 701,393,946

Ramsey County Debt Trend Data

	2006	2007	2008	2009	2010
General Obligation Debt	\$ 200,392,000	\$ 200,697,000	\$ 184,027,000	\$ 193,302,000	\$ 194,792,000
GO Debt to Market Value	0.40%	0.41%	0.34%	0.36%	0.39%
GO Debt Per Capita *	\$ 2,091	\$ 2,066	\$ 2,220	\$ 2,361	\$ 2,426
Debt Service Tax Levy: County DS	\$ 16,355,056	\$ 16,335,056	\$ 16,382,103	\$ 16,568,638	\$ 17,818,638
Library DS	\$ 620,088	\$ 619,062	\$ 859,640	\$ 1,638,765	\$ 1,638,854
Debt Service Tax Levy to Total Tax Levy	7.34%	6.99%	6.73%	6.63%	6.93%
Estimated Market Value	\$41.2b	\$45.9b	\$49.1b	\$48.4b	\$46b
Annual G.O. Bonding	\$ 6,750,000	\$ 20,860,000	\$ 6,100,000	\$ 22,050,000	\$ 16,500,000

* Includes all local governments



Ramsey County Office of Budgeting and Accounting
270 Court House
15 West Kellogg Boulevard
Saint Paul, MN 55102
651-266-8041
www.co.ramsey.mn.us
Printed on recycled paper