



RAMSEY COUNTY, MINNESOTA



# RAMSEY COUNTY 2011

A FINANCIAL REPORT TO CITIZENS

YEAR ENDED DECEMBER 31, 2011

## TABLE OF CONTENTS

The Year in Review	1
About Ramsey County	2
Issues & Trends	7
County Functions	10
Financial Statements	19



### **The 2011 Ramsey County Board of Commissioners**

Top Row, Left to Right: Tony Bennett (1st District); Jan Parker (2nd District); Jim McDonough (6th District); Toni Carter (4th District);

Bottom Row, Left to Right: Janice Rettman (3rd District); Chair Rafael Ortega (5th District); Victoria Reinhardt (7th District);

*Cover Photo: The City of St. Paul, the County Seat and State Capital, along the Mississippi River*

# THE YEAR IN REVIEW

Welcome to the Popular Annual Financial Report (PAFR) for Ramsey County. Our 2011 PAFR provides a general overview of the County's financial position in 2011 and highlights our important initiatives from throughout the year.

This PAFR provides an easy-to-read summary of the County's Comprehensive Annual Financial Report (CAFR) that contains more detailed financial statements, schedules, statistics and notes for the year. We welcome you to read the CAFR on the County's website at [www.co.ramsey.mn.us/ba/index.htm](http://www.co.ramsey.mn.us/ba/index.htm). While there, we encourage you to browse the rest of the website to learn about all the ways the County serves its citizens, including special events and public notices.

The County responds to changing community needs by listening to its residents and delivering innovative and collaborative programs. Throughout the next several pages, you will have an opportunity to see how Ramsey County performed financially in 2011, as well as to understand the on-going services that are provided to the public.

As in previous years, Ramsey County continues to be financially sound and well-managed by a dedicated County Board and professional staff.

Thank you for your interest in Ramsey County and its Popular Annual Financial Report. We hope this document is informative and interesting.

Comments, questions and suggestions can be addressed to the Ramsey County Office of Budgeting and Accounting, Suite 270, 15 West Kellogg Boulevard, Saint Paul, MN 55102. For more detailed information regarding Ramsey County's financial status for 2011, please view our CAFR on the County's website at [www.co.ramsey.mn.us/ba/index.htm](http://www.co.ramsey.mn.us/ba/index.htm).



Julie Kleinschmidt  
Ramsey County Manager



Lee Mehrkens  
Chief Financial Officer

# ABOUT RAMSEY COUNTY

## Population

Ramsey County is a fully developed urban center that has the second largest county population in Minnesota and the smallest land area. With its population of 508,640, it is the most fully developed and densely populated county in Minnesota. Saint Paul is the central city and has about 56% of the residents. The suburban area includes communities that range in size from Gem Lake (393 people) to Maplewood (38,018 people).

The County has a diverse community. The largest minority populations are Asians (11.7%) and African American (11%). About 7.2% of the people have a Hispanic or Latino ethnic background. Seventeen percent of people ages 5 years and older in Ramsey County live in homes where a language other than English is spoken.

## Income

Income in Ramsey County is above the U.S. average. The Census Bureau estimated the 2007 median household income was \$51,716 compared with the U.S. median of \$50,740. About 9.5% of families were below the poverty level; nationally 9.5% of families were below poverty.

## Education

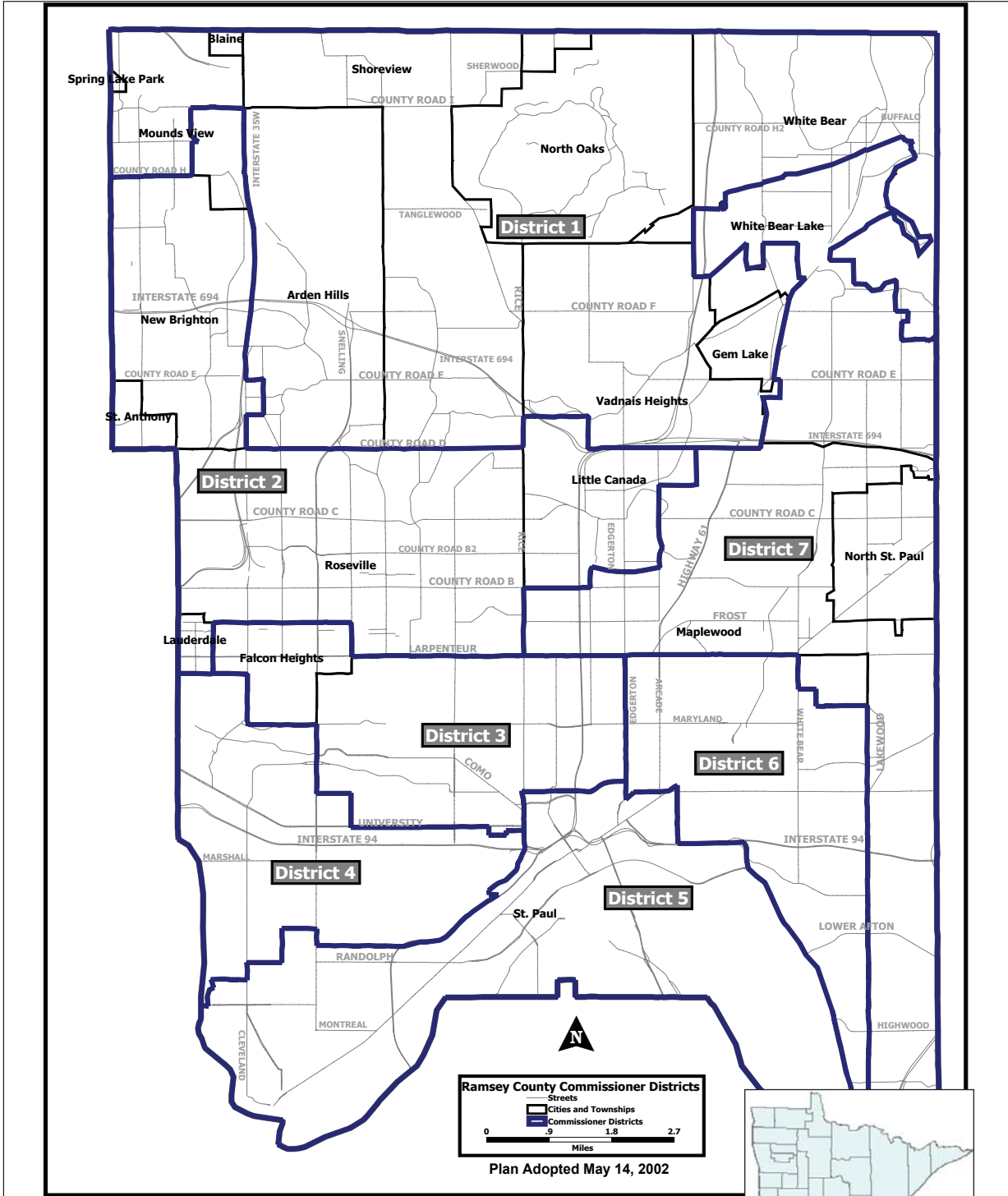
Ramsey County has a well-educated population. Of the people 25 and over, 15.3% have a graduate or professional degree; the U.S. rate is 10.1%. About 38.3% have a bachelors or higher degree in Ramsey County; 90.3% have completed high school. The national rates are 27.5% and 84.5% respectively. In addition, we are home to more colleges and universities than any other county within Minnesota.

## Jobs

Ramsey County is a major employment center that draws people from surrounding counties to fill the need for employees. There were 314,604 people employed in Ramsey County in 2010. This is more than the number of Ramsey County residents in the labor force (271,904). Ramsey County is home to many of Minnesota's largest employers including 3M Company, U.S. Bancorp, Health East, and United/Children's Hospital. Ramsey County's unemployment rate is consistently below national and state rates. In 2010 the average unemployment rate within the county was 7.3 percent.

## County Government

Ramsey County was organized on October 27, 1849 and named for Alexander Ramsey, Minnesota's first Territorial Governor. A seven-member Board of Commissioners elected by district for staggered four-year terms governs the County. The County Attorney, Sheriff, and Judges are also elected officials. The Commissioners are responsible for establishing strategic direction for the County, creating policies and adopting a biennial budget. The County Manager is responsible for carrying out the policies of the Board of Commissioners, overseeing the day-to-day operations of the County, and appointing department directors. In 1990, Ramsey County citizens voted to become the first and only Home Rule Charter County in Minnesota. Adopted in 1992, the Charter authorizes more autonomy to the County for local governance.



## Map of Ramsey County Commissioner Districts



Ramsey County, Minnesota

## Ramsey County Mission Statement

Ramsey County - Working With You to Enhance Our Quality of Life

### Values Statement

Ramsey County is community centered and serves the citizens with integrity, honesty, respect, innovation, and responsibility.

### Goals

- Be a leader in financial and operational management
- Promote multi-modal transit and transportation solutions that effectively serve our citizens
- Prevent crime and improve public safety
- Be a leader in responding to the changing demographics in Ramsey County
- Improve the quality of life within Ramsey County
- Protect our natural resources and the quality of our environment

## AWARDS AND RECOGNITION

- **Distinguished Budget Presentation Award** from the Government Finance Officer's Association (received continuously since 1983).
- **Certificate of Achievement in Excellence in Financial Reporting** from the Government Finance Officer's Association (received continuously since 1975)
- **GFOA Award for Outstanding Achievement in Popular Annual Financial Reporting** (received in 2011 and 2010 for the 2010 and 2009 Popular Report).
- **AAA Bond Rating.** Ramsey County is one of only 53 counties nationwide (of 3,066 total U.S. counties) and four counties in Minnesota to receive a AAA/Aaa credit rating, the highest possible credit rating from both Moody's and Standard & Poor's rating agencies (in the top 1.7% of counties).
- Became the **only County in Minnesota** to earn the GFOA's annual awards for excellence in the CAFR, PAFR, and Distinguished Budget Presentation along with having a top bond rating by two rating agencies.

# 2010 GFOA AWARD

## **Award for Outstanding Achievement in Popular Annual Financial Reporting**

**PRESENTED TO**

**Ramsey County  
Minnesota**

**for the Fiscal Year Ended**

**December 31, 2010**



*Linda C. Davidson*  
President

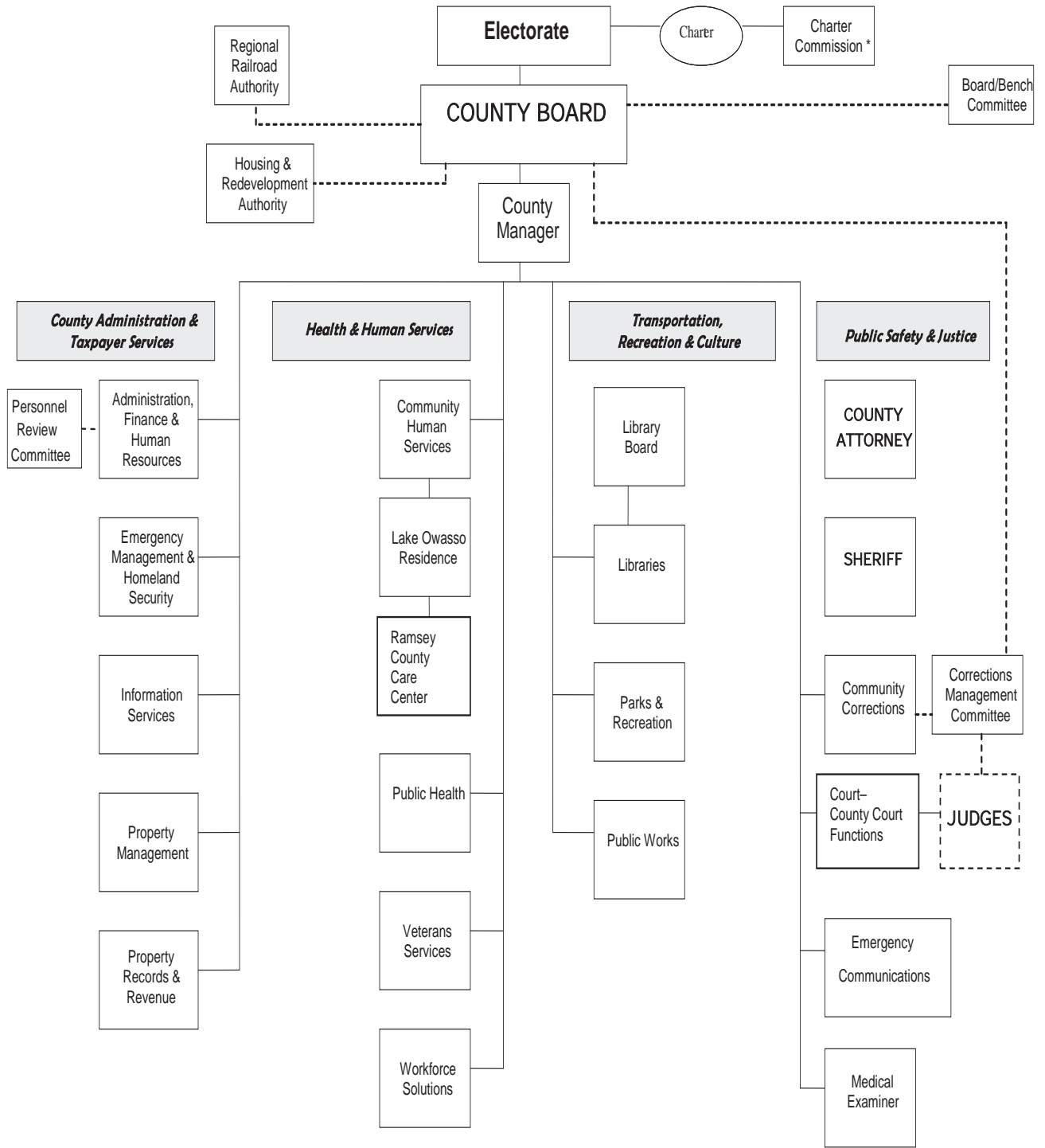
*Jeffrey L. Esser*  
Executive Director

The Government Finance Officers Association of the United States and Canada (GFOA) has given an Award for Outstanding Achievement in Popular Annual Financial Reporting to Ramsey County for its Popular Annual Financial Report for the fiscal year ended December 31, 2010. The Award for Outstanding Achievement in Popular Annual Financial Reporting is a prestigious national award recognizing conformance with the highest standards for preparation of state and local government popular reports.

In order to receive an Award for Outstanding Achievement in Popular Annual Financial Reporting, a government unit must publish a Popular Annual Financial Report, whose contents conform to program standards of creativity, presentation, understandability and reader appeal.

An Award for Outstanding Achievement in Popular Annual Financial Reporting is valid for a period of one year only. We believe our current report continues to conform to the Popular Annual Financial Reporting requirements, and we are submitting it to GFOA.

# RAMSEY COUNTY ORGANIZATIONAL CHART



**BOLD** Elected

- - - Policy

State of Minnesota

\* Appointed by District Court



## Issues & Trends: Library

It has been one year since the new LEED (Leadership in Energy and Environmental Design) certified library in Roseville opened with its recycled rubber floors, motion-sensing lights and low-flow plumbing—a few of the many features that helped the library receive a Gold certification. Customers appreciate the eco-friendly approach, along with the additional space of the second story, a larger storytime room, 107 computers with full Internet access, and several study rooms.

Because of these innovative features, Roseville has received seven prestigious awards, including the International Interior Design Association and Metropolis Magazine Smart Environments Awards, and was named a Top 10 New Landmark Library by Library Journal.

The renovated Ramsey County Library in Roseville had nearly two million checkouts on its first anniversary. In the past 12 months, the library registered 12,191 cards, had 185,616 computer logins and 16,763 program attendees.



## Accomplishments

- Circulated 4,713,703 items in 2011, an increase of 23 percent over 2005
- Roseville had highest circulation of any public library in Minnesota
- Averaged 1,750,000 visits each year
- Expanded to 300 public Internet computers, used 335,000 hours in 2011
- Wireless Internet access used more than 200,000 times in 2011
- Children's early literacy programming attended by 54,000 kids and caregivers in 2011, up 90 percent over 2005



The newest addition to the Ramsey County Library system is located in the New Brighton Community Center. This library boasts a popular collection, comfortable seating, 14 computers within the library as well as the additional computers located in the Community Center lobby. New Brighton's 6,515 square foot space also includes a drive-up materials return, Community Center program rooms that allow the library to expand programming and an updated collection.

Ramsey County Library continues with its Facilities Master Plan, focusing on improvements to the libraries in Shoreview and White Bear Lake.

## Issues & Trends: Workforce Solutions

### *Building the success of employers and individuals*

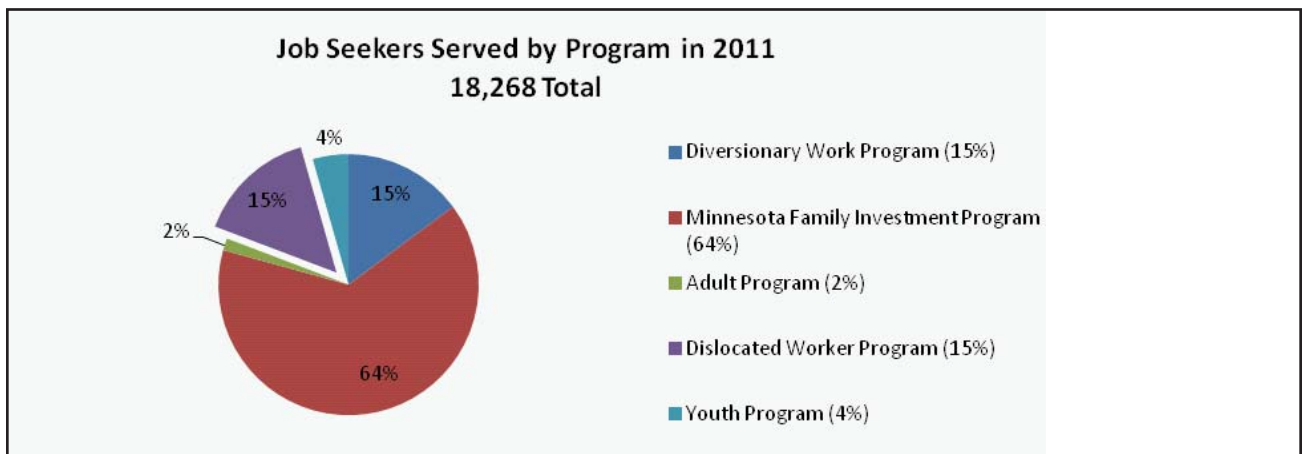
The Ramsey County Workforce Solutions Department prepares job seekers with the skills and qualifications needed to be competitive in the local job market. Career development services, offered at no cost to eligible job seekers, include assessments, basic skill development, job search workshops, occupational skill training, support services, and employment counseling. Whether acquiring a first job or exploring mid-level career changes, Workforce Solutions ensures that job seekers have opportunities to reach economic self-sufficiency and improve their families' quality of life.

Workforce Solutions also provides workforce services to area businesses. Services include recruiting and placement, employee retention and retraining, and restructuring support.

*“Today we are in a swiftly changing labor market requiring businesses and job seekers to be agile and forward thinking about the future of work. Job seekers and businesses should think about two critical issues that are tied to their successes: (1) transferable skills and (2) career paths, not jobs. Development of these two strategies for both businesses and job seekers will go a long way toward assuring a strong asset producing future.” - Patricia Brady, Director, Workforce Solutions*

Last year, Workforce Solutions celebrated its tenth year serving the families and businesses in Ramsey County. In that time, Workforce Solutions has

- placed 41,135 job seekers into employment;
- provided 24,072 job seekers with funding for occupational training programs;
- raised \$13 million in competitive funding, which provided additional services to the citizens of Ramsey County; and
- received 13 awards for service excellence from its peers.



## Issues & Trends: Public Works

Over the past several years, the Ramsey County Public Works Department has been a leader in assembling and implementing large complex transportation projects of local and regional significance. These projects require extensive collaboration between the County, State and local agencies, utility providers, and business/residential property owners. In 2011, construction was substantially completed on two such projects, White Bear Avenue/County Road D and the interchange at Highway 36 and Rice Street. Both projects have been recognized by area associations for excellence in engineering.

### White Bear Avenue/County Road D

White Bear Avenue south of Interstate 694 carries more than 25,000 vehicles per day, serving as a major commuter route and critical access to Maplewood Mall and the surrounding business community. County Road D is part of the roadway network surrounding the mall and was characterized by congestion and deteriorated pavement. In 2005, Ramsey County partnered with the City of Maplewood to reconstruct both roadways. The team successfully secured federal funds as the cornerstone to stretching County and local investment dollars. Construction began in spring 2009 and was completed in fall 2011. Although any project of this scope is disruptive, phasing throughout the construction period ensured area access and commuter needs were met.



*Aerial view of interchange at Hwy 36 and Rice St.*

Now complete, the area is enjoying a much needed face lift that includes significant traffic capacity and safety improvements, a friendlier pedestrian environment, and numerous aesthetic design elements. That fresh new look is also providing a much needed backdrop for redevelopment and renovation of an important regional shopping area. This Project received Merit Awards for Outstanding Performance from the Minnesota Department of Transportation and the Minnesota Concrete Paving Association.

### Highway 36/Rice Street Interchange

Highway 36 and Rice Street was a congested interchange characterized by tightly spaced intersections and a deteriorating bridge that no longer met design standards. Ramsey County led a highly collaborative process with the Minnesota Department of Transportation and the Cities of Roseville, Little Canada, and Maplewood to design and construct a new interchange and nearly a mile of widened Rice Street. The innovative “Offset Single-Point” interchange design eliminated one signalized intersection, increasing intersection spacing and improving traffic flow. Ramsey County was successful in securing federal and state funds through competitive selection processes, providing the essential leverage to County and local sources to move the project forward. Design and construction was completed in just three years, ahead of schedule and within budget. The project has made a positive impact on the community with improved safety and traffic operations for commuters, transit services, and area businesses including St. Jude Medical with its world headquarters just outside of project limits. Pedestrian and bicyclist safety and access were also improved with sidewalks on both sides of Rice Street and continuous bike shoulders through the corridor. Aesthetic treatments provide a general standard in keeping with commercial and other land uses along the corridor. The project received an Honor Award from the American Council of Engineering Companies and a Seven Wonders of Engineering Award from the Minnesota Society of Professional Engineers.

# PUBLIC SAFETY AND JUSTICE SERVICES

Public Safety is a primary concern for Ramsey County, with services provided by the Sheriff's Department, County Attorney's Office, Court system, Emergency Communications, Medical Examiner, and Community Corrections.



## Sheriff's Department

The Sheriff's Department provides crime prevention and law enforcement services and operates the pretrial detention facility (jail) used by all the local law enforcement agencies in the County. The Sheriff's Department also provides patrol services within certain municipalities.

**In 2011, the Sheriff's Department:**

- Cleared 73% of warrants;
- Housed a daily average of 385.5 inmates at the Law Enforcement Center.

## Community Corrections

Community Corrections has three goals: enhancing community safety, holding offenders accountable for repairing the harm they caused to victims and the community, and engaging offenders in the process of developing the competencies they need to remain law abiding. Community Corrections staff carry out the decisions of the court system and implement conditions of probation and treatment plans for juveniles and adults. The department also operates three institutions that detain juveniles and adults after conviction.

**Community Corrections in 2011:**

- Provided probation services to 23,150 adults and 2,210 juveniles;
- Data released by the State regarding recidivism in the metro area reflects that 84% of felony-level offenders remained felony conviction free within three years post supervision.

## County Attorney's Office

The County Attorney prosecutes adult and juvenile offenders who have committed crimes in Ramsey County and collects child support. The County Attorney also provides legal advice and counsel and represents county agencies in legal matters.

**In 2011, the County Attorney's Office:**

- Assisted more than 10,000 families who shared in child support collections of \$55 million;
- Reduced the average time to charge a felony case from 18 days in 2007 to 4 days.

# PUBLIC SAFETY AND JUSTICE SERVICES

## Emergency Communications

Emergency Communications answers 911 and non-emergency telephone calls and provides multi-agency dispatching services for law enforcement, fire and emergency medical responders.

### 2011 Statistics and Highlights:

- The Emergency Communications Center answered a total of 774,314 calls: 325,643 were 911 calls and 448,671 were calls on non-emergency lines; and
- The average answer time was 4.0 seconds; and
- Provided technical support for over 4,000 mobile and portable 800 MHz radio users.



*Emergency Communications Dispatching Center*

## Medical Examiner

The Ramsey County Medical Examiner investigates deaths to provide a truthful and unbiased account to Ramsey County residents, law enforcement, and all appropriate agencies as well as the judicial system. The Medical Examiner's Office also responds to death scenes and conducts investigations daily, at all hours.

### 2011 Statistics and Highlights:

- Performed a critical role in helping law enforcement clear 82% of homicides;
- Worked diligently with tissue procurement organizations and surviving family members to accomplish many successful tissue donations.

## Court System

The Second Judicial District Court (Ramsey County) is a unified trial court with general jurisdiction to hear all types of civil and criminal cases. The Court has a total of 29 judges, five referees and one magistrate. Judges can hear any criminal or civil matter brought before them, so they are assigned to various calendars as determined by the Chief Judge who has the authority to assign judges and referees. The main Courthouse is located in downtown St. Paul. The Second District is legislatively mandated to maintain a suburban court site, which is located in the city of Maplewood. Courtroom space is also provided at the County's Law Enforcement Center and the Juvenile and Family Justice Center.

# TRANSPORTATION, RECREATION AND CULTURAL SERVICES

Recreational activities are essential for a healthy and fun lifestyle. Ramsey County offers a wealth of opportunities for recreation, both indoors and out. The County boasts parks, lakes, and golf courses among its many outdoor options that enhance the quality of life for the people of Ramsey County.

Also included in this function are important departments such as Public Works, which maintains the roadways within the borders of Ramsey County, and seven Ramsey County Libraries.



*Battle Creek Waterworks provides summertime fun for the entire family*

## Parks & Recreation

### **Green Spaces, Fun Places, Active Lives**

Ramsey County maintains over 6,500 acres of parks, trails, open space and recreation areas for its residents and serves over five million visitors annually. Each park area has a unique charm and includes facilities for one or more of the following: hiking, biking, cross-country skiing, picnicking, children's play, nature study, swimming, boating, fishing, sledding, archery and off-leash dog activities. Indoor ice arenas provide opportunities for year-round ice skating. Tamarack Nature Center offers a rich natural environment in which to relax, renew, learn and discover. Residents from throughout Ramsey County and the region use these facilities and enjoy the convenience of nearby areas that bring nature and outdoor enjoyment into their lives.

### Ramsey County Parks and Recreation:

- Operates 5 golf course and 10 ice arenas; and
- Is one of 10 Implementing Agencies for the Metropolitan Regional Park System and receives Regional and State Grants to acquire, develop, restore, operate, and maintain its regional parks and trails. Ramsey County maintains nine County parks, six regional parks, and six regional trails; and
- Maintains nine County parks, six regional parks, six regional trails, and nine County open space sites; and
- Manages natural resource habitat to support populations of native wildlife species within the County's system of parks and open space; and

# TRANSPORTATION, RECREATION AND CULTURAL SERVICES

- Provides access to most lakes in the County, encompassing over 11,000 acres of water for boating and fishing and nine County beaches; and
- Manages Special Recreation Facilities within parks including: Battle Creek Waterworks Family Aquatic Center, Tamarack Nature Center Discovery Hollow, two archery ranges, and four off-leash dog areas.



## Public Works

The Ramsey County Public Works Department constructs, maintains, and repairs 295 miles of roads, 94 bridges, and hundreds of drainage structures. The department operates/maintains 253 traffic signals, more than 30,000 signs, and extensive pavement markings. During the winter months, snow and ice removal activities are critical to maintaining safe access and mobility throughout the County.

The Environmental Division provides services in the areas of water resource protection and management, drainage, weed control, and vegetation maintenance.

The Land Survey division maintains the monuments of the original U.S. Public Land Survey System, maintains the County's Geographic Information System (GIS) parcel map database, and performs boundary surveys to determine road rights of way and establish boundaries of County-owned properties.



# HEALTH & HUMAN SERVICES

The Ramsey County Health and Human Services function serves to meet basic human needs by providing protection and assisting clients in achieving self-sufficiency. The departments in this function are responsible for providing financial, mental health, social, and job training services to a variety of groups including low income, elderly, disabled, homeless, mentally ill, abused, and vulnerable children and adults.

## Community Human Services

CHS receives a combination of federal, state, and local funds to administer and deliver services to children and families, low-income and homeless, elderly and physically disabled, chemically dependent, mentally ill, and developmentally disabled residents. On any given day in 2011, CHS had approximately 125,000 clients/service consumers.

CHS's mission is "Making a Difference: Helping People Survive and Thrive" by providing resources to meet basic needs, assuring protection for the vulnerable, and assisting self-sufficiency, all in the most cost effective manner possible.

### In 2011, Community Human Services:

- Took 43,386 applications for clients applying for financial and medical assistance, and food support;
- Took 1,403 intake reports of child maltreatment;
- Finalized 32 adoptions;
- Provided case management services to approximately 6,003 adults and children with disabilities.



## The St. Paul-Ramsey County Department of Public Health

Saint Paul – Ramsey County Public Health's mission is to improve, protect and promote the public health. The department provides a diverse range of services as it carries out federal and state mandates to prevent the spread of disease, protect against environmental hazards, prevent injuries, promote healthy behavior, respond to health emergencies, and assure accessibility of health services.

### Public health services provided to County residents in 2011 included:

- Vaccinating 9,500 adults and children to prevent infectious diseases; and
- Helping 31,324 low-income mothers, infants and young children get supplemental nutritious foods, and information on health, nutrition and breastfeeding; and
- Collecting 1.38 million ton of hazardous waste from 26,963 visits by County residents to household hazardous waste collection sites; and
- State Health Improvement Program (SHIP) activities that reached approximately 43,100 students and staff at 83 school sites in the 5 Districts in Ramsey County.



# HEALTH & HUMAN SERVICES

## Lake Owasso Residence

Lake Owasso Residence provides licensed residential services to 64 adults with moderate to severe developmental disabilities and complex medical and social needs.

The highest priority of Lake Owasso Residence is to provide residents with excellent programming and supportive medical services to improve their functional abilities and independent living skills.

The residents live in safe and nurturing environments that address individual needs and improve their quality of life. Our campus setting in Shoreview has 8 one-level homes that provide separate bedrooms for each resident and a large common area. Our campus promotes social and recreational activities with its special environment that includes walking and biking paths. There are many group activities lead by staff and volunteers that enhance art and craft skills and promote integration through local community affiliations.

## Ramsey County Care Center

The Ramsey County Care Center is built on a commitment to serving residents and their families. Here, elderly citizens are provided the necessary care and services to live healthy, dignified, full lives.

Ramsey County Care Center's 26-bed Transitional Care Unit combines the advantages of rehabilitation and long-term care with the services of an acute care hospital. The Care Center also provides residential long-term care for 152 residents.

Some of the highlights about Ramsey County Care Center are:

- Spacious private and double rooms; and
- Therapy up to six days a week; and
- Laundry service available; and
- Wi-Fi Internet access.

## Veterans Services

The Ramsey County Veteran Services Office (RCVSO) provides guidance, assistance and advocacy to the veterans and active military service members of Ramsey County, their dependents and survivors in applying for veterans benefits provided by the Minnesota Department of Veterans Affairs and the United States Department of Veterans Affairs.

In 2011 the [Veteran's Services Department](#):

- Responded to just under 10,000 phone inquiries from veterans and their dependents and advocates seeking information about veterans benefits; and
- Responded to more than 1,000 e-mail inquiries to answer questions about veterans benefits; and
- Interviewed 2,720 Ramsey County veterans, their dependents and survivors at our offices located at 90 W. Plato Blvd. in St. Paul.



# TAXPAYER SERVICES AND COUNTY ADMINISTRATION

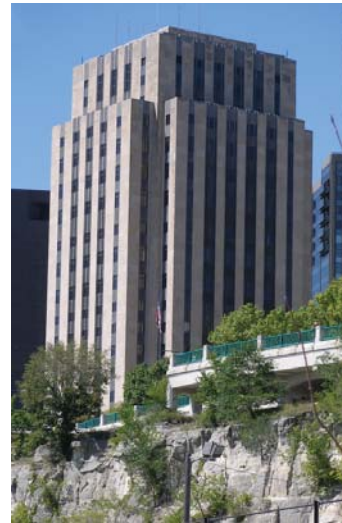
The Taxpayer Services and County Administration function covers a wide range of vital County services. This function includes the Ramsey County Board of Commissioners, County Manager's Office, Property Management, Information Services, as well as Property Records, Revenue, and Elections. Information Services maintains the County's technical infrastructure. Property Management is charged with maintaining the buildings and grounds that are owned by Ramsey County. Property Records, Revenue, and Elections handles real estate documents and appraisals.

## Property Management

The Property Management Department provides facility and project management services for County owned and leased buildings. The Department manages over 2 million rentable square feet in 21 major County owned buildings.

### In 2011, Property Management:

- Continued to provide quality building services while maintaining an operating cost per gross square foot of \$6.45 for their buildings; and
- Provided voice technology services to more than 6,900 County, City of St. Paul, and Minnesota 2nd Judicial District Court users; and
- Completed the construction of the East Metro Behavioral Health Crisis Center. This facility began providing services in September, 2011; and
- Completed the remodeling of the Metro Square Office Building and relocated the majority of remaining departments in the RCGC-West Building; and



*St. Paul City Hall/Ramsey County Courthouse*

- Completed the construction of a new library in the New Brighton Community Center to continue library services to the residents of the Arden Hills/New Brighton area; and
- Purchased property at 5 S. Owasso Boulevard, Little Canada for the Ramsey County Sheriff impound lot.

## County Board and Administration

This functional area includes operations and funding for the County Board and County Manager's Office, including Human Resources, Budgeting and Accounting, and Emergency Management.

### In 2011, Ramsey County:

- Approved a 2012-2013 biennial budget with a total spending decrease of 2.7% in 2012 and a spending increase of 1.1% in 2013; and

# TAXPAYER SERVICES AND COUNTY ADMINISTRATION

- Received the highest achievable credit rating on debt obligations (AAA) that is held by only four counties in Minnesota and only 52 (1.7%) of 3,066 total counties in the United States.

## Information Services

Information Services manages the County's computer technology infrastructure, application and web development and support, electronic document management, HIPAA and data practices, geographic information systems, computer training and technology acquisition.

In 2011, the Information Services Department:

- Had computer systems available during 99% of business hours;
- Had over 300,000 visits each month on the County's website.

## Property Records and Revenue and Elections

Property Records and Revenue is responsible for the oversight of activities involved in recording property ownership, valuing property in the County, and collecting and distributing property taxes. The Department is also responsible for the facilitation of state, local, and national elections.

In 2011, the Examiner of Titles Office issued 897 Directives and Certificates of Examiner, reported on 998 title defect cases, and conducted 1,383 hearings.

The Recorder's Office recoded, indexed, and returned over 81,000 real estate documents to customers.



*Ramsey County has a wide variety of services available on its website. Here, you can find anything from how to do business with Ramsey County, to job openings, to information on the public golf courses throughout the County. All of this and more can be found at [www.co.ramsey.mn.us](http://www.co.ramsey.mn.us).*

Property Tax Services had over a million communications with customers via mail, the phone, email, and the web. It also maintains current and historical information on property values, taxes, and services on its website at [www.co.ramsey.mn.us/prr](http://www.co.ramsey.mn.us/prr).

The Assessor's Office completed 27,716 property reappraisals and 1,678 review appraisals.

## Other Funding Areas

In addition to the various departments listed in this report, the County provides funding to the Ramsey Conservation District, Ramsey County Historical Society, the Ramsey County Landmark Center, and the County Extension Service.

# REGIONAL RAILROAD AUTHORITY

The Ramsey County Regional Railroad Authority was organized in 1987 by the Ramsey County Board of Commissioners. The Authority is dedicated to a long-range vision of transit services to meet changing needs for today and for succeeding generations.

The Ramsey County Regional Railroad Authority is composed of the seven members of the Ramsey County Board of Commissioners.

In 2011, the Ramsey County Regional Railroad Authority participated on the Red Rock Corridor Commission, Rush Line Corridor Task Force, Midwest High Speed Rail Association, Northeast Diagonal Policy Advisory Committee, Robert Street Steering Committee, Central Corridor Partnership, Minnesota High Speed Rail Commission, Gateway Corridor Commission, and the Counties Transit Improvement Board (CTIB). CTIB is a joint powers organization that includes members from Ramsey, Anoka, Dakota, Hennepin and Washington Counties. These counties voted to impose an excise and sales tax to fund transitways in their counties.

Ground was broken in January 2011 on the Union Depot multimodal transportation hub project, which will provide Ramsey County's and the region's residents and businesses access to light rail, high speed rail, Amtrak, commuter rail, intra- and intercity buses, bicycle and pedestrian facilities at a single location. By the end of the year, the project was 50 percent complete and on

schedule to be complete by the end of 2012.

In 2011, the Central Corridor Light Rail Transit project entered its second year of heavy construction, with civil, track and station work underway up and down the alignment. At the end of 2011, construction was approximately 45 percent complete.

For more information on the transit plans set forth by the Regional Railroad Authority, please visit their website at <http://www.regionalrail.org/>.

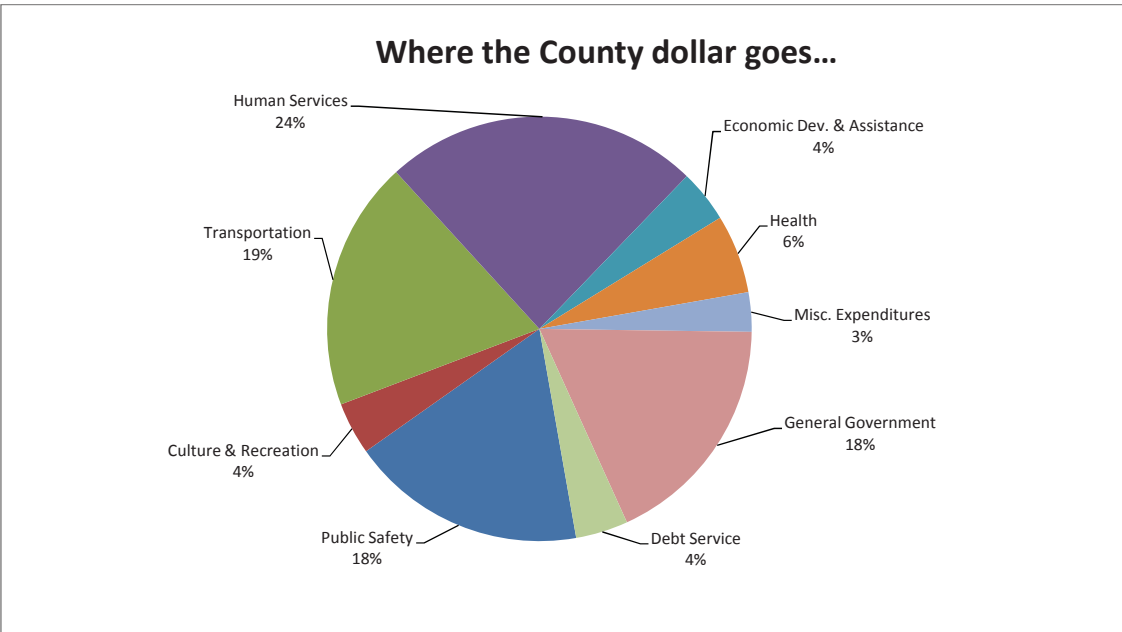
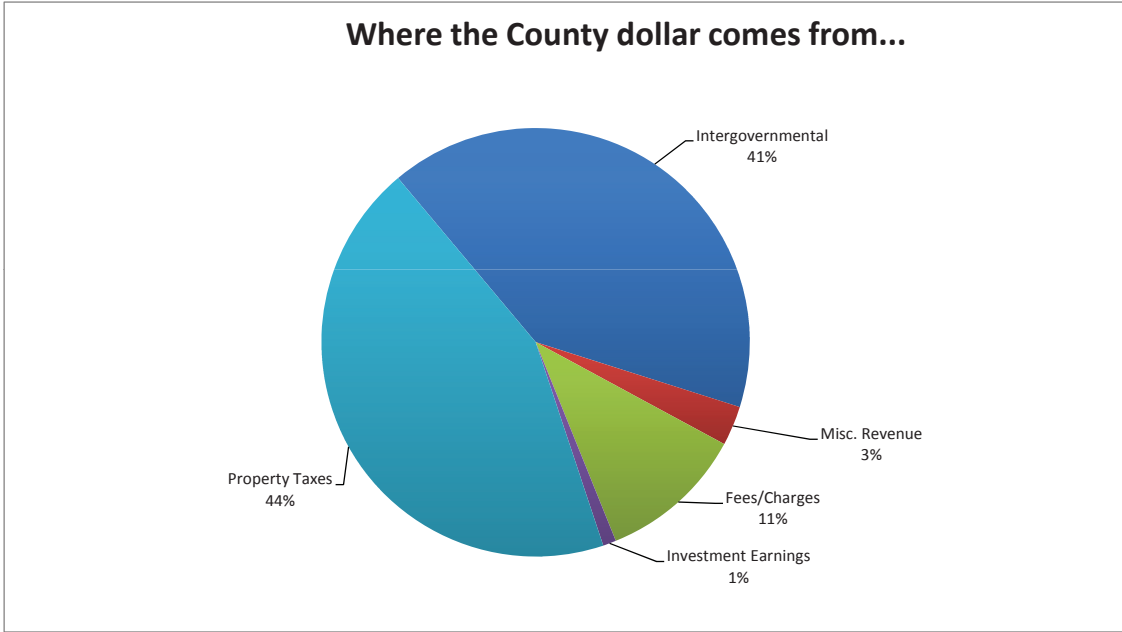


*Renovation of the historic Union Depot began in 2010 and will be completed in 2012 as a multi-modal transportation hub, bringing together local and regional bus service, light rail, Amtrak, bikes, and pedestrians.*

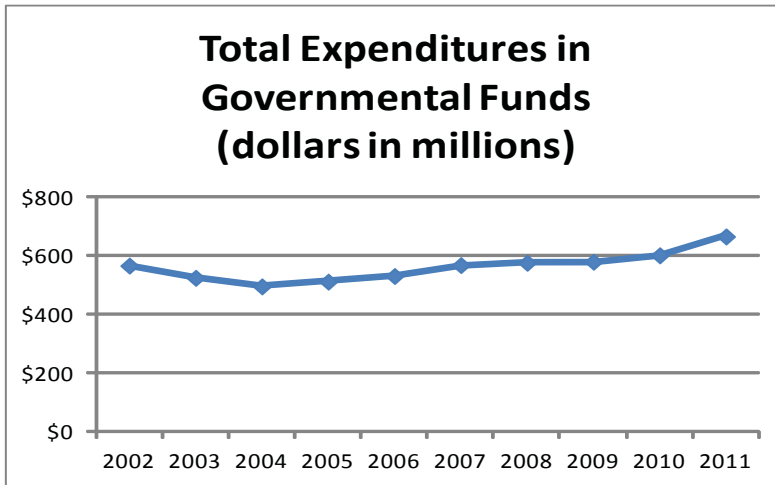
# FUND FINANCIAL STATEMENTS

This section presents summarized financial statements for the County. The County uses two formats for presenting its financial statements. Government-wide, which is similar to a private sector business, shows a broad overview of the County's financial standing and reflects a long-term focus. The fund financial statements, on the other hand, provide a look at an individual fund's assets, liabilities, and fund balance and reflects a short-term focus. For more detailed financial statements, please refer to the County's Comprehensive Annual Financial Report (CAFR) found on the County's website at [www.co.ramsey.mn.us/ba/index.htm](http://www.co.ramsey.mn.us/ba/index.htm).

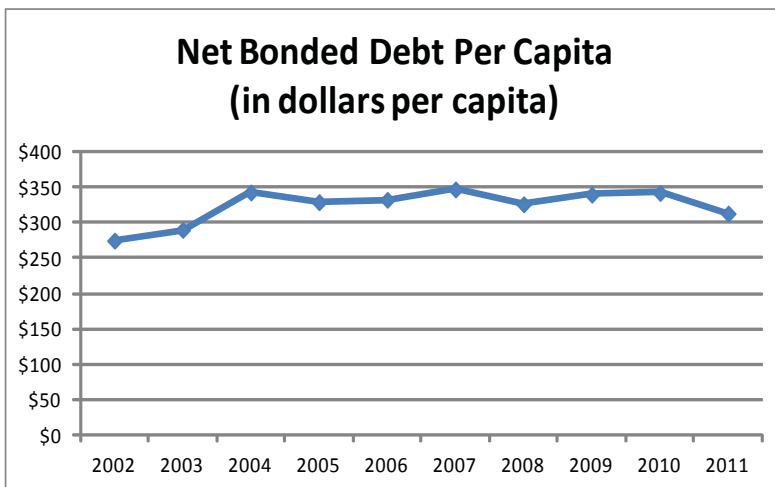
**The information presented in these graphs is derived from the fund financial statements.**



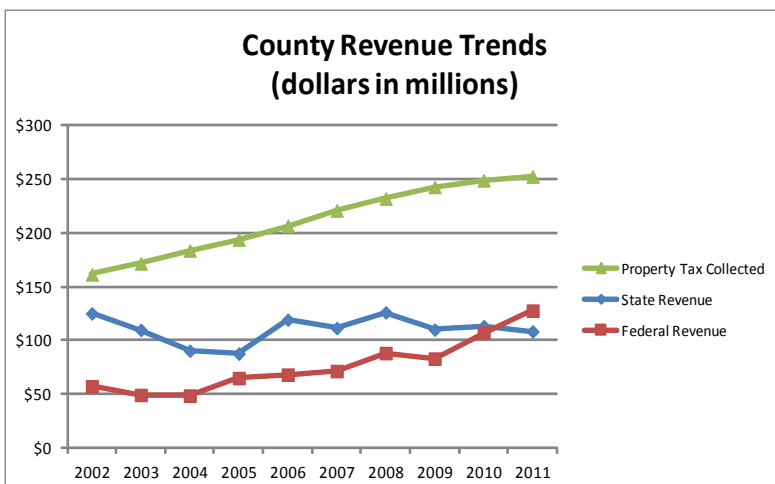
# MULTI-YEAR FUNDING TRENDS



Total County expenditures have increased from a recent low in 2004 and are now at funding levels that exceed 2002 expenditures. Total County expenditures across all governmental funds were \$666,933,605 in 2011.



Low interest rates and rapid debt repayment have resulted in manageable debt levels for the County despite an active capital improvement program to replace and rehabilitate aging facilities and public infrastructure. Debt ratios fall within the low to moderate benchmark set by credit rating agencies for “triple A” counties.



The Ramsey County property tax levy has been trending upward since 2002, primarily as a result of flat or reduced State aid. Property taxes provided 35% of the County’s budget in 2002, but increased to 44% by 2011. State aid has failed to keep pace with population growth, increased service demands and inflationary cost pressures. State revenues include County Program Aid, Market Value Homestead Credit Aid, categorical grants and road construction funding.

# GOVERNMENT-WIDE STATEMENTS

The information presented in the following section is derived from the government-wide financial statements.

## STATEMENT OF NET ASSETS

	<b>Total</b>				
	<b>2007</b>	<b>2008</b>	<b>2009</b>	<b>2010</b>	<b>2011</b>
<b>Assets</b>					
Total Current & Other Assets	\$ 489,041,114	\$ 487,479,598	\$ 503,952,295	\$ 470,573,223	\$ 509,394,753
Total Capital Assets	609,945,976	623,878,928	647,810,114	701,393,946	803,954,046
<b>Total Assets</b>	<b>\$ 1,098,987,090</b>	<b>\$ 1,111,358,526</b>	<b>\$ 1,151,762,409</b>	<b>\$ 1,171,967,169</b>	<b>\$ 1,313,348,799</b>
<b>Liabilities</b>					
Total Current Liabilities	\$ 105,661,796	\$ 91,059,762	\$ 105,391,097	\$ 90,014,721	\$ 159,957,634
Total Non Current Liabilities	277,497,428	274,872,847	276,154,538	290,774,883	282,484,247
<b>Total Liabilities</b>	<b>\$ 383,159,224</b>	<b>\$ 365,932,609</b>	<b>\$ 381,545,635</b>	<b>\$ 380,789,604</b>	<b>\$ 442,441,881</b>
<b>Net Assets</b>					
Invested in Capital Assets					
Net of Related Debt	\$ 436,875,868	\$ 463,216,707	\$ 495,279,089	\$ 507,896,299	\$ 598,062,359
Restricted	71,157,995	61,904,201	64,652,023	85,110,684	120,670,636
Unrestricted	207,794,003	220,305,009	210,285,662	198,170,582	152,173,923
<b>Total Net Assets</b>	<b>\$ 715,827,866</b>	<b>\$ 745,425,917</b>	<b>\$ 770,216,774</b>	<b>\$ 791,177,565</b>	<b>\$ 870,906,918</b>

The Statement of Net Assets presents the County's capital and cash assets, minus the current liabilities such as payables and long-term debt. The resulting amount is stated as "net assets." The table above shows that the County has increased its total net assets by 10% between 2010 and 2011.

Below you will find some highlights and explanations of major changes to our Statement of Net Assets from 2007 to 2011.

### **Assets and Liabilities:**

- Total Assets increased 20 percent over the past 5 years and 12 percent between 2010 and 2011. Specifically, construction of the East Metro Behavioral Health Crisis Center, remodeling of the Metro Square Office building, construction of a new library in the New Brighton Community Center, and significant progress on the renovation project at the Union Depot were major building projects which contributed to our increase in net assets during the year.

### **Net Assets Invested in Capital Assets:**

- Total Net Assets increased 22% over the past 5 years and average a 4% increase annually.

### **Capital Projects:**

- Slightly more than two-thirds of the County's assets are classified as Net Assets giving the County greater flexibility in paying its obligation on time and qualifying it for the best credit rating available.

## STATEMENT OF ACTIVITIES

	2007	2008	2009	2010	2011
Program Revenues	\$ 325,668,329	\$ 310,685,061	\$ 294,939,025	\$ 326,035,328	\$ 358,949,036
General Revenues	286,105,640	292,845,464	295,560,749	300,953,445	302,571,792
<b>Total Revenues</b>	611,773,969	603,530,525	590,499,774	626,988,773	661,520,828
Program Expenses	589,173,358	573,932,474	566,536,332	606,027,982	581,791,475
Increase/(Decrease) in Net Assets	22,600,611	29,598,051	23,963,442	20,960,791	79,729,353
Net Assets -Beginning	693,227,255	715,827,866	746,253,332	770,216,774	791,177,565
Net Assets - End	<u>\$ 715,827,866</u>	<u>\$ 745,425,917</u>	<u>\$ 770,216,774</u>	<u>\$ 791,177,565</u>	<u>\$ 870,906,918</u>

The Statement of Activities presents the County's change in net assets over a given period. This statement does not take into account the timing of related cash flows. The County's total revenue increased by 8.1% between 2007 and 2011. Revenue reductions in 2008 and 2009 were largely the result of cutbacks in State funding and lower earnings on investments due to the economic downturn. To offset these revenue reductions the County instituted cost-containment measures including service reductions and leaving vacant positions unfilled. These cost-containment measures are reflected in the 1.3% decrease in expenses between 2008 and 2009. Revenue increases in 2011 were largely due to a significant increase in Capital Grants & Contributions to support various construction projects throughout the County.

Program expenses decreased 1.3% from 2007 to 2011, averaging a decrease of .25% annually. Program expenses differ from the expenditures listed in the governmental funds due to the unique nature of special service funds such as debt service and capital projects being listed in the total governmental fund expenditures and not in the Statement of Activities.

Ramsey County strives to balance our residents' ability to pay with the need for essential services in difficult economic times. Ramsey County has proven to be a fiscally responsible government, and will continue to provide essential services while maintaining strong financial management.



# CAPITAL ASSETS AND DEBT MANAGEMENT

## Ramsey County Debt Trend Data

	2007	2008	2009	2010	2011
General Obligation Debt	\$ 200,697,000	\$ 184,027,000	\$ 193,302,000	\$ 194,792,000	\$ 192,770,000
GO Debt to Market Value	0.41%	0.34%	0.36%	0.39%	0.40%
GO Debt Per Capita	\$ 360	\$ 331	\$ 356	\$ 364	\$ 359
Debt Service Tax Levy: County DS	\$ 16,335,056	\$ 16,382,103	\$ 16,568,638	\$ 17,818,638	\$ 19,068,638
Library DS	\$ 619,062	\$ 859,640	\$ 1,638,765	\$ 1,638,854	\$ 1,638,376
Debt Service Tax Levy to Total Tax Levy	6.99%	6.73%	6.63%	6.93%	7.75%
Estimated Market Value	\$45.9b	\$49.1b	\$48.4b	\$46b	\$43.2b
Annual G.O. Bonding	\$ 20,860,000	\$ 6,100,000	\$ 22,050,000	\$ 16,500,000	\$ 18,500,000

## Capital Assets (Net of Depreciation) Five Year Trend

	2007	2008	2009	2010	2011
Land	\$ 85,263,765	\$ 90,822,760	\$ 98,308,534	\$ 137,475,719	\$ 141,861,576
Buildings & Improvements	223,590,425	238,472,223	242,359,932	257,961,015	280,044,643
Improvements Other Than Buildings	17,428,342	18,714,743	17,603,520	17,191,520	16,496,877
Equipment	29,669,913	29,166,220	27,076,007	25,933,752	26,651,694
Computer Software	-	-	760,181	692,947	122,232
Infrastructure	186,911,000	184,420,970	192,191,207	213,005,364	209,481,328
Construction in Progress	67,082,531	62,282,012	69,510,733	49,133,629	129,295,696
Total	\$ 609,945,976	\$ 623,878,928	\$ 647,810,114	\$ 701,393,946	\$ 803,954,046



**Ramsey County Office of Budgeting and Accounting**  
**270 Court House**  
**15 West Kellogg Boulevard**  
**Saint Paul, MN 55102**  
**651-266-8041**  
**[www.co.ramsey.mn.us](http://www.co.ramsey.mn.us)**

Printed on recycled paper