

Ramsey County Parks System Signage Project 2021 Phase 1 Engagement Summary

Background

Ramsey County Parks & Recreation is rethinking signage throughout the park system, and needs community input to help shape the direction of new signage that is user-friendly, accessible, and welcoming.

Ramsey County parks have a variety of signs that include maps, directions and park or facility rules. Most signs are located near park and facility entrances, with others at destinations within the park.

The current signage plan only addresses wayfinding. It doesn't include other types of signs, communicating with people who speak languages other than English, signage design and placement standards, or updates to sign regulations.

This project will result in new standards for the full range of signage that will:

- Reflect the county's equity commitments.
- Be user friendly.
- Meet county needs and requirements.
- Be affordably maintained and updated.

Public Engagement

The public engagement for this project consists of two distinct rounds of engagement. The first round assesses current signage, users thoughts, and impacts utilizing in-person intercept surveys and online survey solicitation. Staff and surveyors asked the public park users several questions to gain information. The second round uses sample sign mock-ups created from the input received in round one for park users to provide feedback.

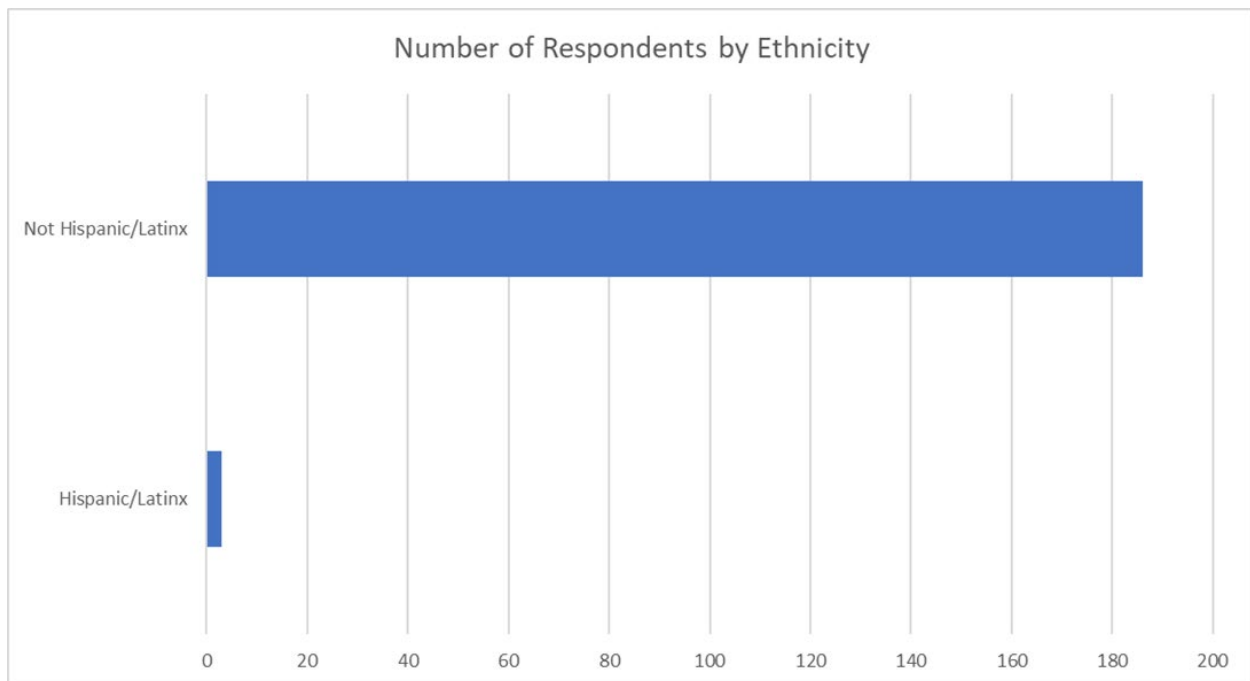
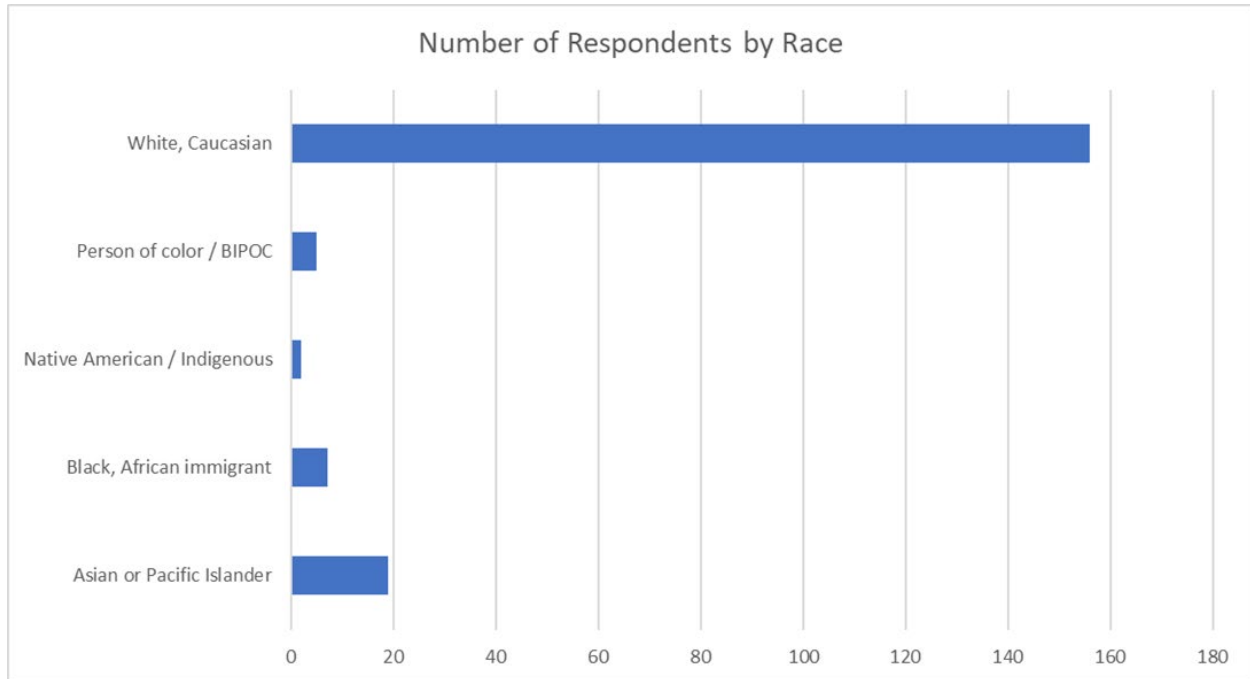
Engagement Objectives

1. Determine impact of sign on park users
2. Determine what information is most desired by users
3. Determine what is missing from existing signs
4. Determine what people think would make the signs feel more welcoming
5. Determine what people think about proposed new signs

Engagement Round 1 Summary

In-person engagement was conducted at many locations across the Ramsey County park system, on different days of the week, and at different times to engage with as many different

people as possible. The online survey was sent out to the public through social media and county websites. Over 1,100 comments were received. The following represents the demographics of those who responded.



In addition to demographics, individuals were asked to provide a zip code for their home area. The following map indicates where park users were from: (Insert map)

The questions that were utilized for engagement both in person and online survey, were organized and broken down into the following categories based on people's responses.

What is helpful about existing signs?

- Easy to read
- The map
- Shows location ("you are here")
- Color coded trails
- Icons and arrows
- Knowing where one is at
- Stating the rules
- Large size
- Many respondents said, "Don't read them"

How would you improve the sign itself, the contents, or the location?

- Add distances of trail segments
- Add "you are here" to map; location indicator on post/sign
- Brighter colors, more contrast
- Icons for rules
- Larger maps on small trail post
- Make them simple and easy to read
- Multiple languages (suggested by single language speakers)
- Sign locations should clearly face pedestrians
- QR codes

How could signs make you feel more welcome here?

- Say "welcome"
- More color, brighter
- Icons, less words

What other information would you like when you come here?

- Emergency info
- Events & programs
- Social media
- Simple; less is more
- Park hours

Thinking about current or future signs, what would you change to make these more effective to help others understand and follow the rules?

- Icons or pictures rather than text
- Consistency
- Simple/short
- Encouraging/positive
- More than one throughout the park. Main sign and then small icon signs?

Get rid of “park ordinance in effect”

BIPOC Comments

The following comments are extracted and representative specifically of comments received by people of color. In summary, the comments received are the same as the larger community reaction and comments to the questions asked about signage. There appears no distinguished difference in response to the engagement questions.

What is helpful about these wayfinding signs?

Contrast	Noting kinds of trails.	Don't use them
Directions	Trail symbols simple and	nothing
Contextual Maps	easy to follow (no words;	Maps are descriptive and
Lots of extra unneeded	clear arrows)	in a good layout
stuff on the maps	Color coded trails	You are here symbol
Maps	Easy to read	Shows where you're at
Blue amenities and arrows	"you are here"	Rules
so we know where to find	paths are clear	rules
what we're looking for if	Knowing where you're at.	No alcohol rule.
we're new to the park	distances	numbers for location
Symbols	It has what is permitted	Sheriffs #
Map is helpful	and what is not.	nothing
The directions are helpful	LLIA postcard more helpful	legend
because they clearly say	than sign/signs tell you	Location of facilities
where to go	where trailer parking is	Boat launch time frame;
Has never really looked at	allowed	and the overall keys to the
them	public doesn't look at	map is good
map	these signs	
map	Yes	

How would you improve the sign itself, the contents, or the location?

Take off the photos - we	to take from the map, and	Make the content bigger
don't care about happy	which trail we're currently	Only written in English
people using the places;	on	add bench and roof
these add clutter and	Make them simpler and	location is good
we're already here so you	easier to read	Show distances
don't need to sell us on	Icons numbered with	"You are here" bigger
the place.	references on the map	No Response
Same look, design, colors	Context for forks in the	Add "you are here" to map
and logo	road	It could be higher for taller
You Are Here markers	Context for which way is	people
Clear trail names so we	North	
know which trails we want	Fix worn out/illegible signs	

Pertinent info i.e. boat launch
 hard to read - faded colors
 Too much language.
 It's small
 have more
 location is fine, no wake signs colored like the clean, drain & dispose sign for boats
 important to clarify wake time as it is different on different lakes so be specific list now wake times/days
 Clarify winter rules
 move kayak info away from pier to west of small dock where kayaks now enter move sheriff parking

next to launch so it is centrally located put sign on dock next to launch that says fishing & boat launching okay but no swimming
 Make the "you are here" more obvious
 Could be more consistent in types of trails.
 facing the direction people are walking
 Change "Trail location marker" to "intersection identifier"
 But some people are short, so maybe shorter
 Updated and labeled QR code.

Map might need to be more detailed
 Maybe put signs in another language
 update fishing sign to include muskie and northern sizing and limits / move this sign to pier and update with DNR information
 Provide trail info along the trails so you know where you are
 Zoom in and out for context
 distances. ADA accessibility.
 The physical location of the sign seems off

How could the signs make you feel more welcome?

Welcome sign
 Add Barcodes to scan for up-to-date trail information/closures/detours
 She doesn't feel unwelcome
 bright colors
 more large park map context
 "welcome"
 color
 no response
 no response
 Good as they are
 Other languages present
 Entrance sign can be more welcoming

none
 do not feel unwelcomed
 I don't know the presence of a sign at top of road I guess is welcoming
 no
 More eye catching, interactive
 no,
 "welcome"
 no / not the job of a sign
 Educational, historical info on signs, such as ecology, wildlife, flora
 Post concrete hours on the sign
 It looks good, and is impressed

non emergency numbers
 events
 Emergency Info
 no response
 A scavenger hunt and more educational info about animals etc.
 Dog on paved trails
 No swimming and canoeing (Vadnais)
 Points of interest
 Park hours.
 none
 post additional sign before reach launch before round about and have separate signs for walkers near walking trail, separate

signs for anglers near pier ,
separate sign for
kayakers/canoes and
separate sign for boaters
with activity specific info

none
none
Events; group activities

limit rules to the really
important ones

What is Helpful about these rules signs?

Clearly provide basic rules.

no response

because now boaters take
off from launch turn right
into fishing area

Provides info we need to
know

N/A

Clarify pet policy.

Bulleted lists are easier to
read

Graphics

People don't read it.

keep where is but bigger
and bolder

Relatively easy to read.

see other responses from
questions 2,4,5

Put in different languages
(or add brochures), and
simplify for children and
non-English speakers

clearly and specifically
state rules for each user
group near location they
use/make signs large and
catchy /current sign blah
and confusing/need more
signage

Increase font size

use images not text

QR code for translation
languages

more icons

Remind to keep dogs on
leash

Where are dogs allowed

require all who use lake to
complete a boater class/
no boating zone by pier

Visual

Simpler

Use icons and universal
symbols

no response

How would you improve these rules signs?

I'm college educated and I
have no idea what "park
ordinance in effect"
means. Make sure the
language is simpler than
that.

Symbols showing what
rule applies to (bike, ped,
pet, etc)

White text on black
background is good - black
text on white background
consider making the text
bold.

Make them simpler and
easier to read

Stick with a non-serifed
font. Those signs are
easier to read than the
serifed fonts.

Use proper grammar -
don't use title case (like
the brown/white Snail
Lake sign)

Make them all look similar

Thinking about current or future rules signs, what would you change so everyone better understands and follows the rules?

What does "Park
ordinance in effect"
mean? Simplify that.
Keep it simple

Individual signs along
entrances/paths, so you
only read a small bit.

Simplify beach rules -
remove things like 'patron
must' and just go with
"swim only within

designated swimming
area" - it's brief, more
commanding

Less text

Short bullet lists are better
than longer sentences -
trim the fat

Available on website

What additional information would you like on wayfinding or rules signs?

Ensure logical placement - so these signs should be at trailheads and right at the parking lot.

Always "You Are Here" references and compass direction context

In large parks, have additional signposts with symbols and arrows so folks know they are on the right track to finding the archery range or whatever amenities are on the farther ends/edges

Wayfinding at all forks in trails.

Include clear information on how visitors should address/report blatant rule violations.

Lights where possible for night time.

Educational, historical info on signs, such as ecology, wildlife, flora

Post concrete hours on the sign

It looks good, and is impressed

non emergency numbers events

Emergency Info

no response

A scavenger hunt and more educational info about animals etc.

Dog on paved trails

Points of interest

Park hours.

none

post additional sign before reach launch before round about and have separate

Engagement Round 1 All Comments

Below is a list of all comments received from in-person and online feedback related to wayfinding and rules signs.

What is helpful about existing signs?

Activity icons are very helpful

Arrows

Basic info covered

Basic not too cluttered; nice open map

Big "you are here" star

Blue amenities and arrows so we know where to find what we're looking for if we're new to the park

Boat launch time frame; and the overall keys to the map is good

Bullet points

Bullet points

Bulleted

Bulleted lists are easier to read

Centrally located.

Clarity on what the rules are

Clarity simplicity

Clean list of rules

Clear

Clear

Clear and concise

Clear and to the point

Clear headings

Clear key

Clear language

Clearly provide basic rules.

Color coded trails

Color coded trails

Color-coordination between trails on map and trail markers is helpful

Colored trails are nice.

Consistency in the types of rules (hours, pets, etc.)

Contextual Maps

Contrast

Defines permitted activities on trail segments.

Detailed map shows whole park

did not see sign

Didn't really look at it

Directional arrows

directional arrows

Directions

distances

distances

Doesn't really look at the signs

Don't read it much.

Don't look at them	inclusion of a map with all	map
Don't use them	trails highlighted	map
Easy to read	informational /important	map
Easy to read	info	map
Easy to read	It gives pertinent info about	map
Easy to read and navigate	watercraft and usage and	Map
Easy to understand	regulations	Map
Easy to understand icons	It has what is permitted and	Map
enforcement contact	what is not.	map
Finding where I currently	it's a start in stating rules	map
stand and which way I need	It's there/ acts as a reference	map detail - woods, marshes,
to head	Knowing what's open and	etc
General areas to visit	where trails are	map features
Good amount of information	Knowing where you are on	Map is helpful
Good geographical layout	the map	Map kiosk helpful
good to have rules	Knowing where you're at.	map location
Hard to miss	Knowing which trails lead to	Map points out location of
Has good mix of verbiage /	where with simple graphics	where you are
symbols for adults and	Knows where to go	Map signs are most useful
children	Large lettering	for planning routes
Has never really looked at	Large map, context	maps
them	Large print	maps
Helpful to know the rules	legend	maps
hours	Legend is easy to read	Maps
Hours open	Legend. "you are here."	Maps
How big the icons are	Lettering is big enough.	Maps are descriptive and in a
I do like the photos that	like the maps	good layout
present the expected	like the wayfinding	Maps easy to follow
environment on the Battle	liked the map	miles vs KM
Creek Map - but it is too	LLIA postcard more helpful	Names
busy. Need to organize it a	than sign/signs tell you	never noticed signs
bit better.	where trailer parking is	never read the ... signs
I was just at snail lake	allowed	Never read them.
yesterday - first time and I	location needs other sides	Never really look at them.
had my dog so I wanted to	Location is good	no
find out the rules about dogs	Location is good.	No alcohol rule.
and the info was easy to find	location numbers	No answer yet because first
icons and arrows.	Location of all signs good	time visiting
Icons with what's ahead	Location of facilities	No bikes/dogs easy to read
Includes basic info about	Long Lake Point sign	
operations	identifies name of area	

not much - had to reread
several times and still not
sure
Not really need the map
since familiar with the area
Not really need the map
since familiar with the area
not sure
Not too many rules
nothing
nothing
nothing
Nothing helpful/too wordy
and doesn't catch your
attention. I walk all the time
past this sign and have never
read it all
Nothing? confusing
Noting kinds of trails.
numbers for location
Overall map of where am I
good
park hours
Park hours
park maps
parking and amenity
locations
parking locations
paths are clear
people mostly ignore signs
but it covers liability
phone number to call if there
are issues to report
Photos are helpful.
Pictures
Pictures and arrows
Print size readable
Provide summary of hours
and major rules
Provides info we need to
know

public doesn't look at these
signs
QR code. parking lot location.
Paths and fishing spots.
Quick guide to places of
interest
Relatively easy to read.
restroom locations
Right close to the water
Rule sign: it is nice to know
what you can bring into the
park
Rules
Rules
Rules
rules
rules
Rules are in bullet points
rules are mostly clear
rules are very clear-- little
room for interpretation
Rules listed
Rules understandable
Saying, "Some dogs aren't
socialized to children."
Sherriff's #
Short
Shows available trails and
their length
Shows bike trail
Shows lake and paths
shows restrooms
Shows roads vs. trails
Shows Walking trail & board
walks.
Shows where you are +
parking lots and bathrooms
Shows where you are.
Shows where you are. "You
are here" star.
Shows where you're at

sign alerts us to something
sign at pier - not helpful
Sign is good
Sign is not meaningful to me
as I am kayaking
sign text is clear and simple.
High speed hours clearly
stated. informing boaters of
operating hours.
signage appropriate and
good
Signs are sturdy and easy to
spot from a distance
Simple symbols to
understand
Spells things out
states rules
states what you can and can
not do and when/ keep no
wake times for fishing
stating rules important
Straight forward. Nothing
wrong with rules.
Symbols
Symbols vs words are good
Tell rules/ expectations
tells rules & direction and
wake rules
that there is a sign at all
that there is a sign to
articulate the rules
that we have signs at all
The "you are here" star
The area Map
The arrows showing the
locations to common
destinations, or locations
that can be referenced on
the maps.
The big maps are great for
trail heads or major trail
junctions. The little narrow
posts are great for smaller

junctions or every once and a while on the trail.

The bottom two pictures are the best.

The brown with the white is easiest to read

The dark background sign w white letters is bulleted and easy to read.

The directions are helpful because they clearly say where to go

The images and arrows help direct my route

The location and landmark destinations

The map

The map

The map

The map is easy to navigate; the location of the sign is good

The map is helpful

The map shows trail, lakes, and picnic areas.

The map with icons and arrows are easy

The map, distances

The map; color coding of trails

The maps and the rules

The pictures are nice

The rules

The rules are clearly spelled out and simple to follow and posted in obvious locations.

The rules of this area.

The scavenger hunts and other activities for families in the kiosk bin

The signs on the bottom quickly tell you which direction to go for specific activities

The wording is generally clear

They always check the maps

They are spelled out

Title

topography

trail difficulty

Trail symbols

Trail symbols simple and easy to follow (no words; clear arrows)

trail types

Trails are in color

Trails are nice: can see the shortest ways for a good walk

Trails clearly mapped.

Trails clearly marked

trails marked

type or level of trail

Unclearly states some rules

Universal direction signs with arrows are easy to

understand and don't take a long time to interpret.. (International?)

visual, using maps

wake expectations

Wayfinding location; don't use signs too much

wayfinding map

Weatherproof

Where am I now in relation to whole map.

Where is the dog park from here?

where parking lots are

Which way to amenities

Works for all languages

Yes

yes, rules clear LLIA cards give understandable lake info

Yes, similar to other lakes

you are here

You are here

You are here

you are here star

You are here symbol

You are here symbol

You are here.

you are here. Knowing pet rules. Location of bathrooms

You can see exactly where you're going. Labels dog park.

You know the rules!

How would you improve the sign itself, the contents, or the location?

Maps are too high, (I'm 5'1")

"Enforced by" is confusing - why would we call that number? Be more clear like, "report violations to" vs. "in an emergency"

"You are here" would be helpful for the maps

"Leave no trace" campaign similar to what's used in the BWCA

"Park ordinance in effect" -I don't even know what that means. Aren't they always in effect? Would there be times they aren't in effect?

2x as big

A few look outdated and are not eye catching

A link / QR code to report a park concern or make suggestions

A Link/QR code to watch a guided tour video of the park with the history of the park and ways we can do more...

Add "you are here" to ALL map signs on trails

Add "you are here" to map

Add "you are here" to map

Add "you are here" to map

Add "you are here" to map

Add "you are here" to map- it is printed below the map instead of where we actually are

add bench and roof

Add Braille and other languages

Add concrete hours to the rules sign

Add distance info

add distances for each section of trail

add mileage indicators for sections of trail

Add numbers or bullet points to set apart the rules from one another

Add other languages

Add trail segment distances.

add unique numbers or other identifiers to each map station along the trail and mark those on the map itself (for example, so I could see that I am at map post 8 and I just came from map post 7 and see both of those clearly on the map)

add where benches are located

allow users to scan for mobile map or more info

Alternate languages

Angle towards trail (placement)

Anti bias rule and where to get help

Available drinking water

Be careful about text as sometimes it is hard for the visually impaired to read

Be very clear which different activities are permitted on trails. Eg walking vs biking. Skiing vs walking vs dog walking.

better colors

Better location that everyone from parking lot passes by.

Better maintained

Better mark where OLDA entrance is

Big signs reminding movers about yielding on trails

bigger brighter

Bigger sign, Park Rules bold and bright / have sign stand out visually

Bigger signs about no dogs allowed (both responses from a non-dog walker)

Bikers announce and yield to the pedestrian

Bold the font on the rules sign

bolder colors

Braille or voice activated

Brighter colors

brighten up

But some people are short, so maybe shorter

centrally located at arrival point change font, background, improve content

Change "Trail location marker" to "intersection identifier"

Chunk the information: Example: Put all the time information together - Park hours and boat ramp hours could be in one place - TIME.

Clarify dogs on trail rules, specific to area.

Clarify paved trail vs. natural surface trail vs. road.

clarify rules (either pets are allowed or not; don't allow pets in some areas of a given park but not others. too difficult to communicate and enforce)

Clarify winter rules

Clear ski trail info. Keep info pertinent to area i.e. boat launch info far from boat launch.

Clear trail names so we know which trails we want to take from the map, and which trail we're currently on

Closer to dog park entrance

Color code or label trails, include code on icons.

colorful

colors

combine signs - no one is going to take the time to read multiple signs

Conduct maintenance on the signs and replace them when they become sun-bleached, like the Snail Lake Regional Park sign above.

Confusing on what is north vs. south: orienting the sign

Consistency in size and format for all parks.

Consolidate information from multiple signs

Context for forks in the road

Context for which way is North

Could be more consistent in types of trails.

define personal watercraft

Did not like the "no dogs" sandwich board location- thinks it should be by the trail heads

Display direction, NSEW

Display distance on each marker. 1 mile, 2miles, etc.

Display pictures

Distance to each by icon

distances

distances

Distances between locations.

distances would be nice

Distances.

Distances.

distances. ADA accessibility.

Doesn't even look at them

Doing a good job

Don't put the wayfinding arrows at 45 degree angles to the Northwest or Northeast -- that can be more confusing especially if the trails curve past the sign.

Just stick with simple left, right, or straight (up) direction arrows.

Eliminate trail names. Use segment names. Even the trail snow groomers do not

understand or remember trail names.

facing the direction people are walking

Fewer words if possible

Fine

Fishing and particularly fishing trash is a huge blight in the parks (and is infuriating for those of us who go to see wildlife rather than fish). PLEASE give info about this

Fix worn out/illegible signs

Font could be bigger

For key attractions, put how far away it is in walking time

For leashed pets and feces symbols would work.

fresh, sexy, colorful

get rid of "don't"

get rid of them

hard to find trail maps online

hard to read - faded colors

Hard to read/ make distinctive and bright colors/ as is to easy to ignore/ background faded / font bad

Have arrows signs on the trails telling where the trail goes

Have directions to different locations. She indicated it is difficult to figure out which way the trail goes on the map versus on the actual ground.

have more

Have more than one sign because it is a long parking lot and people go multiple directions from that parking lot.

Have posts along the trail with number where you're at

Higher contrast on maps for those with visual impairments. Multiple shades of one color is confusing.

highway symbols can get confused with park symbols.

How do I know the sunrise and sunset times?

how do you know when elevation exceeds and why important?

How rules are enforced (esp hours and no liquor)

I have no idea what "Park ordinance in effect" means.

I like tamarack's signs and trails each have their own symbol. Easy to follow.

I'm college educated and I have no idea what "park ordinance in effect" means.

Make sure the language is simpler than that.

Icons for rules

Icons numbered with references on the map

Icons would be more useful to indicate who can use trail, such as bike, snowshoe, etc.

important to clarify wake time as it is different on different lakes so be specific

list now wake times/days

Improve the "you are here",

Place large signs outside TNC/trailhead and smaller signs inside

Include a distance on icons, otherwise no reason to use icon instead of way finding map

include distances/trail lengths
 incorporate ecological/wildlife info via QR codes at various map locations
 Increase awareness of leash laws
 Info on how long fishing (and other) trash stays in the environment, eg: fishing line 600 years, plastic bottles 450 years, cigarette butts 10 years
 International picture icons best. Reduces concern of having other languages available.
 Is there a way for the visually impaired to understand them?
 It could be higher for taller people
 It's good
 it's great
 It's small
 just basic rules/ simplify/ start with no wake rules first / much bigger sign with contrasting letters and background/use capital letters for emphasis on some important words
 Keep things short and simple
 Large print
 Larger font
 Larger lettering, orientation to landmarks like parking slots, etc.
 Larger map
 Larger maps
 Lead fishing sinkers- rules

Least amount of words possible but still gets the information communicated.
 Less clutter- don't need cutesy photos as on the Battle Creek sign
 Less complexity
 Like signs inside the dog park because they show right where you are, distances, etc.
 Link to additional rules.
 Link to click for more info.
 List all slow wake info together followed by wake producing info/contrast the background and white lettering
 list specific times and days for no wake, state lake craft direction
 location fine, too wordy, why separate line for personal watercraft?
 location good, text needs to have bigger letters/ too wordy / needs to catch attention which existing signs do not
 location is fine, no wake signs colored like the clean, drain & dispose sign for boats
 location is good
 location numbers
 location of big sign good but needs to be more visible to all boaters launching
 Looks fine
 main sign - specific park hours since sunrise and sunset vary seasonally / why are boat launch hours specific/ can you launch

boats here? where are signs saying no lifeguards on duty/ swim own risk
 Make all signs big, font big
 Make all signs the same at each park
 Make brighter, add different color for types of trails. avoid using red, and bigger font on map.
 make double sided
 Make fishing zones (and more importantly, No-Fishing zones) much clearer
 make fonts larger so they're easy to read at a glance. use bullet points
 Make it bigger.
 Make it clear where activities, like dog walking, is allowed.
 Make it more visible to see when people are entering into the park, such as using bigger font and change to a brighter text/background color.
 Make no wake sign off of Long Lake Road and Beach Road bigger. boat launch has two no wake signs and I never saw them - need much larger more noticeable signage. I believe if people know rules most will follow if they are aware
 make roads more clear
 make sign stand out / now too brown and small writing/ fewer words and larger there are three rules no wake and wake times, direction of lakes and when parking spots gone no launching . the card passed out says it well

make signs a "one stop shop"
(rules and map info on same sign)

make signs consistent (same background, same fonts and colors, same size posts, decide if you're ending each rule with a period or not, etc)

Make sure there is a visible
You are here dot

Make the "you are here"
more obvious

Make the content bigger

Make them all look similar

Make them simpler and
easier to read

Make them simpler and
easier to read

Map going in the direction
that I am going and looking
at the map

Map might need to be more
detailed

Map seems small?

Map to interact with.

Map too busy (read Tufte for
Visual Information) - I
understand but takes long
time to interpret. Organize
the information to make it
appear less cluttered and
easier to interpret in a
shorter period of time. The
photos are very helpful, but
they clutter the map in the
current configuration. Just
needs better organization.

Mark restrooms if available
on maps

Maybe include a phone
number for Ramsey County
Parks Office and the hours
the office is generally open
so if people have questions
they can call.

Maybe make the more
interesting to look at

Maybe put signs in another
language

Might be a problem to read if
you can't read English?

Mile marker of path

More color

More explicit rules about no
dogs allowed

More highlighting of where
you are

More icons and pictograms;
Use boldface or underline to
make it easier to skim (park
hours, no pets, etc.)

More pictures or symbols

More signs throughout trails
pointing directions

more specific on wake and
no wake times/presently
unclear/Location good but
need bigger sign with
lettering that is eye catching
move kayak info away from
pier to west of small dock
where kayaks now enter
move sheriff parking next to
launch so it is centrally
located put sign on dock next
to launch that says fishing &
boat launching okay but no
swimming

Multiple languages would be
nice

Multilingual

Multilingual rules

Multiple languages

N/A

N/A

Naming parking lots

Need enforcement list fines
/state 150 feet away from
craft to make a wake

need new sign same location
listing fishing rules and
regulations

Need to put distances on the
map

No distance

No dogs on certain trails

No lead fishing tackle or
sinkers

No pictures- feels like it just
clutter the map

No Response

no wake signs should flash
and be an exotic color like
orange sign nearby, right
now big sign ineffective

none

none

Not in a good location.

Nobody really reads it
because it is far away from
where people actually enter
the beach.

Not sure if the pictures are
necessary; also the
placement of those pictures
are odd

Note trails within dog park.

nothing

nothing

nothing

nothing

nothing

nothing

Number (or letter) key
intersections on the map and
put the number on the posts

Numbers on intersections

OK

Only written in English

park hours be specific - does
park really close at 4:40 in

winter? did it close than for ice castle after sunset?

paint curbs yellow instead of using those flimsy no parking signs which end up as trash why are trailers permitted? Can kayaks and wave runners launch here? can boats park here?

Peace poles

People use apps more than the signs

Pertinent info i.e. boat launch

Phone and contact info is too small to read.

Physical or online map would help

Picture key

Pictures or pictograms for quicker reading

place sign such that when people stop they don't block the trail

place the map so it's facing the correct relationship to N/S/E/W

Please pick up your trash

Point out entrances/exits to Discovery Hollow/garden (which are public)

possibly show a map based on single activity, what is the route for a hiker, biker, skier, etc

Provide distance of paths

Provide QR code link

Provide QR code to scan for more info in native language

Provide trail info along the trails so you know where you are

Provide trail maps at intersections that are color

legible, have been user tested as and are usable.

Put distances on the maps

Put info on one sign rather than a bunch of little ones

Put plastic bags for dogs near sign

Put trash bins near signs

QR code could be bigger

QR code to link to map for designated swimming area

QR code to provide access to audio/written rule info in native language.

QR link or map for where to find designated ash disposal

Reduce amount of text, nobody will read all this

reduce clutter

Remove Ramsey County sign on trail signs and put actual park name. That way I'll remember which trails I loved and don't have to guess which park I was at.

remove the photos from the maps; include them on a separate poster if they are still needed --- as it is, the maps look too cluttered

Remove the pictures because they take away from the important info. The compass should be on top of the sign

Rules could be specific to the area. No alcohol rule is odd for the area.

Rules sign- Could be more scannable

Rules signs at each trailhead

Same look, design, colors and logo

Say which path you are on more clearly

see something say something slogan

set apart M_F rules from Sat & Sunday rules/make no wake hours specific and different color/add languages or pictures to explain rules

Show distances

show trash locations

Show wildlife, birds and fish we may see along the way

sign to indicate where to launch kayaks location is great for larger rule sign

Signage should include trash/waste information and how long it stays in the environment when not properly thrown out or picked up. (EX: fishing line- 600 years, plastic bottle 1000 years)

Signpost numbers like Dakota county uses

Signs should face away from the sun to prevent sun fade damage when practical.

Signs should face away from the sun to prevent sun fade damage when practical.

Signs that indicate what is located at the facility when you drive in

since kayaks and canoes launch adjacent to boat launch post rules for kayaks and canoes by boat safety dock

size of font could be bigger

Ski map up all the time.

Small signs on trails could be improved.

So when you're standing in front of map it's no upside down or something else.

some signs are tilted (swim sign at launch) all signs should be repositioned in spring and kept weed free. The paper not parking signs at beach every 20 feet are excessive - try real signs or yellow curbs if parking is a problem

Sometimes less is more so too much detail can be hard to read or follow

specific times of no wake

Spread out the white space between the rules

Stick with a non-serifed font. Those signs are easier to read than the serifed fonts.

summer vs winter confusing

swim in designated area - why not say NO Swimming

Symbols showing what rule applies to (bike, ped, pet, etc)

Symbols so all can understand. Different languages, different reading levels, different visual abilities not represented

Take off the photos - we don't care about happy people using the places; these add clutter and we're already here so you don't need to sell us on the place.

Takes a while to read it.

The angle of the sign could be better

The angle of the sign could be better

The font could be bigger or important information could be highlighted

The maps are just difficult to understand

the no swimming sign is not visible because of all the weeds and is leaning

The physical location of the sign seems off

The restroom symbols are not obvious enough

The sign could be double sided

The signs as-is are very wordy; I doubt many people fully read them. Is there a way to rephrase/reformat the rules so visitors could absorb them at a glance? Perhaps highlight or emphasize key words or phrases, or use more color.

The trails feel like a lot

The Vадnais white background sign - make it a bullet list - it all runs together. The blotchy background interferes with readability - letters mixed in with the dark shading.

Too much language.

Too much to read

Two sides. Big letters.

Universal symbols in color such as a CAUTION symbol "Unguarded"

update fishing sign to include muskie and northern sizing and limits / move this sign to pier and update with DNR information

Update pictures on the wayfinding sign

Updated and labeled QR code.

Use an arrow to point to the You Are Here (hunting around for the star/less obvious)

use bigger print

Use bullet points

Use bullet points on rules

Use common language - like "unguarded" might not be understandable to people whose 1st language isn't English

Use consistent language; prefer "park rules" to "park regulations"

Use different colors in icons and show tunnel better going under Hwy 61

Use more pictures for children

Use more symbols and pictures

Use proper grammar - don't use title case (like the brown/white Snail Lake sign)

Voice activated messages
wayfinding is out of date, especially for MTN bikes; have winter and summer wayfinding

wayfinding notice away from the park

What does "park ordinance in effect" mean?

What is swimwear? Not same to everyone

where to launch kayaks and lake map

White text on black background is good - black text on white background

consider making the text bold.

write in no wake times

You are here bigger

You are here if not already included

You Are Here markers

You are here on all signs/maps

Zoom in and out for context

Zoom in on certain detailed areas

How could signs make you feel more welcome here?

"Welcome to Battle Creek Regional Park"

"welcome"

A clear statement of no racist/bias acts tolerated and where to call for support

A link / QR code to link with other park users and share ideas.

A little history of the park to connect with, not just a map sign.

A sign if appropriate to explain history of park. How did the park get its name? (Example)

A way to see updates so I don't stumble into something

A welcome to Long Lake wording

Add "Welcome to <park name>" to the signs

Add a welcome message

Add Barcodes to scan for up-to-date trail information/closures/detours

Add information about indigenous/native inhabitants, at least original names

add lights; size is good for the big signs

Add more color

add pictograms

add translations and braille

All are welcome signs

allow for gender fluid bathrooms

allow users to scan to view info in another language

Angled for direction of walkers.

another language

Be inclusive of everyone

Better signage of park hours.

Bigger maps at eye level along trail- not too high or too small

bolder colors

bright and inviting

bright colors

can i have alcohol

canoe and kayak use

Clear rules/expectations

color

Color

Colors

Create user centered designs. Employ user testing.

Decorate the signs a bit; solar lights?

do not feel unwelcomed

Doesn't say "Welcome"

doesn't make me feel unwelcomed

Entrance sign can be more welcoming

Fill in the empty bulletin board

Friendlier font.

Good

Good as they are

Have a way finder #on top of pole with corresponding markings on map

Honestly it would be better to have an app that would translate if needed

Honestly, they do a good job. The cartography is pretty good, the only suggestion would be to try and make the maps a little simpler/cleaner for the average user.

I always feel welcome

I don't know the presence of a sign at top of road I guess is welcoming

I feel welcome already

I would have at a glance amenities info

I would know my way around better.

IDK

If sign was clearer and more user clear I'd feel more welcome. I should not have to read and reread and say what?

in multiple languages?

include a hand wave

Include decorations from cultures in MN / Ramsey Co.
 include phone numbers for emergencies and where to call if there is an issue with the park (only at the parking lot/trailhead signage)
 include the word "welcome" at the trailhead/parking lot
 Include the word welcome.
 Inform and get public buy in on trail use.
 inviting you to certain spur trails when you're out on a trail.
 It's good
 Key direction arrow that leads you back to trailhead
 knowing rules make me feel welcome because I know what to expect
 Larger signs in general (road sign, kiosk sign, rules signs)
 lighting
 Like the new signage that shows surrounding streets. It feels safer to know what street I am near in case of emergency by
 make it happier
 make it more "Minnesota-ish" using natural materials
 More color
 More color, clearer
 more color, too blah
 More eye catching, interactive
 More icons less words. It breaks down language barriers.
 More languages (Spanish and Hmong)
 more large park map context

most common regulations
 natural looking
 Neutral about if the sign make me feel more welcome. However, the other things like the landscape design and shelters along the beach makes me feel more welcome to the park.
 no / not the job of a sign
 no answer
 no comment
 no idea
 no opinion
 no particular feeling
 no, not necessary
 No, not needed Just state pertinent rules
 none
 none
 none
 not sure
 Not a sign but, More opportunities/cans to dispose of bagged dog poop.
 not necessary
 not purpose of a sign rather clear rules and how enforced makes me feel welcome
 On the narrow post signs, maybe have them numbered sequentially, so it makes mapping out your hike, where you are and where you want to go, a little easier to plot out in your head or with your finger, and easier to tell if you are on the trail you were trying to get on.
 Other languages present
 Otherwise you would need too many

Partnership with social media like Next-door that is monitored by Parks Dept.
 Pictures
 pictures
 Pictures of dogs
 post updates about work that is underway at the park that a visitor might wonder about (for example: why a visitor might see a lot of trees marked or down right now... here's what the purpose or goal is...)
 print in 50 languages
 Put at lower level for people in wheel chairs and on recumbent bikes
 QR code
 QR codes being used to scan
 Replace the sign with something that is not as faded.
 say "welcome!"
 Say "welcome"
 Say "welcome"
 Say "welcome"
 Say "welcome"
 say "welcome"
 Say "Welcome" in several languages? If the symbols are not international or not understood by different cultures, then make them more inclusive.
 Say a little more about each rule so they don't come across in a scolding way
 Say, "Welcome"
 Say, "Welcome"
 Say, "Welcome"
 Say, "Welcome"
 Say, "Welcome"

Say, "Welcome"
 Say, "Welcome"
 Say, "Welcome". Sign is faded, could use an update.
 She doesn't feel unwelcome signage for safety not to welcome
 Signs are fine but need to fix the road and make it more friendly for biking
 Signs for multiple languages
 Signs with large symbols (as some of these are)
 Something more welcoming at the entrance. A welcome sign
 Tell me where to swim
 The brown sign that is closer to the road should be brighter like this one
 The location of the sign should be closer to the road
 The wayfinding signage are informational and directional - they serve the purpose. If the purpose is to make visitors feel welcome, that

should be separate signage. Perhaps a WELCOME with some general information, then inform that they can view directions and other guidance on the wayfinding signage?
 Then I know what's available, in which direction and how far
 Trail/park signs should not have to make a person "feel" one way or another. They are informational. If someone feels unwelcomed, it's on them, not a sign. Good grief!
 Trails and their distances
 Update the signs
 updated fonts and colors on all signage
 Use an array of users in your testing.
 Use cell phone links to provide info in alternate languages.
 Use darker / common colors for vegetation (green), lakes (blue), etc.

use gender friendly spelling
 Use happy, bright colors
 Use least words possible.
 Using words like green spaces, fun places, Active Lives
 website to access watercraft regulations in multiple languages
 welcome - please follow the rules
 Welcome in different languages
 Welcome sign
 Well-maintained.
 Will be better if there's a way to know if or when the restrooms are open
 Wonder if the park provides Wi-Fi
 wording of "welcome"
 yes
 yes
 yes
 yes, not unwelcomed

What other information would you like when you come here?

2 maps? one large one zoomed in
 A place to give feedback! A contact or suggestions box
 A scavenger hunt and more educational info about animals etc.
 add a QR code - people get real time information about rules ,about the lake, status of lake - link to a website and update regularly
 add as you enter individuals/groups can not

post things (example lost dog)
 Add bulletin board for groups to post info
 Additional contact information such as WRC phone number, Parks main office, and sheriff
 Adequate
 Always "You Are Here" references and compass direction context
 Animals signed and dates

Average Times to walk or bike certain distances
 bigger, clearer, flashier / one sign for kayaks and canoes posted by entering/exit area/
 one sign for boats by launch/
 one sign for angler by big dock
 Building hours
 bulletin board
 camera
 Can't think of any
 Contact information

Containers for lead sinker exchange.
Directions
Dog on paved trails
drinking fountain locations
Educational, historical info on signs, such as ecology, wildlife, flora
emergency info
emergency info
Emergency Info
emergency info.
emergency numbers, a resource for further info
Ensure logical placement - so these signs should be at trailheads and right at the parking lot.
events
Events
events
events
events
events at the park
Events; group activities
Fishing rules
Fishing rules.
Garbage can locations.
He would like the signs to indicate the paths are shared by pedestrian and bikes.
highlight counterclockwise direction
highlight no wake zones, times and post prominently/have self-check for boat and motor hitchhikers so can do self check when monitor not here
History
history

How to rent picnic areas.
How your organization can become a sponsor.
If any trails are underwater today and which ones
if there is other information and space is short - a qr code or link to more information?
improve crime security
In large parks, have additional signposts with symbols and arrows so folks know they are on the right track to finding the archery range or whatever amenities are on the farther ends/edges
Include clear information on how visitors should address/report blatant rule violations.
Include Facebook page, specific dog park FB page, too. Dog park rules.
include specifics on where dogs are allowed and where they are not allowed. (one paved trail allowed and another they are not)
indicated that parks need to post something about electric bikes.
Info about swans
Info about ticks is really good, also all the covid signage was good
Info on when building will open
Info to check motor and prop etc for invasive species / plant/animals
install lighting

instructions for people to keep things clean as different cultures may not know this.
It looks good, and is impressed
It's good
just need necessary info in simplest form
keep signage simple and clearly state all regulations. Too much info dilutes the important info intended
Kiosk bins need to be replaced and filled
less is more
lifeguard on or off duty
Lifeguard on or off duty / specific park hours as sunrise and sunset times change
Lights where possible for night time.
like details of map
limit rules to the really important ones
Link to interactive map to download or use online.
list of animals and plants for people to look for
List of seasonal flowers or other flora and fauna that can be found
LLIA card with lake rules is very helpful
Locations of bathrooms and drinking water
Map of lake
maybe some social media links
Mileage for trails
More educational signs about the different ecosystems
more map context

more no wake buoys leading
boats straight off of launch
and not veering right
towards fishing pier
more signs to say where to
park and with or without
trailers
Nearest Dairy Queen? Lol
need more trailer parking
only signs by fishing pier and
bathroom
no need for boat launch
hours as you are not
supposed to launch boats
here
no other language
needed(first language is
Hmong)
No swimming and canoeing
(Vadnais)
non emergency numbers
None
None
None
None
None
none
none
none
none
none
none
none
none
none
nothing
nothing
Nothing really.
On certain trails, arrows
pointing toward access
(parking lots or street names)

to clarify where the trail will
end up
Park hours.
Phone and dept contact info.
Trail segment distances.
Phone number to call to
report hazards, complaints,
maintenance issues, etc.
Place Icons in different colors
and larger on map
Plant identification.
Points of interest
Points of interest
points of interest
post additional sign before
reach launch before round
about and have separate
signs for walkers near
walking trail, separate signs
for anglers near pier,
separate sign for
kayakers/canoes and
separate sign for boaters
with activity specific info
Post concrete hours on the
sign
Program info.
Programs
programs
Programs and events
Programs and events
Programs and events
Programs and events
programs in the parks
QR codes or other links
QR codes or other links
QR Codes.
Rules- why's for less obvious
ones
scan for mobile map/more
info

see Lake Johanna for good
signage examples
Simpler maps
social media
social media
social media link
Social media links
Social media QR code
Sponsors that have adapted
or supported that park for
recognition.
stick to basic information
/rules applicable to this
beach area
Stick to basic
information/rules
Tamarack paths are
confusing to first timers in
the summer. Make it more
clear about which path or
how to get back. This is a
summer issue only I think.
The information is good
The length of the trails
Think it's good as it is now
TNC/Parks contact info
Trail distances; how long of a
walk it is
Trail segment distances,
which would be beneficial for
people with disabilities.
Trail signpost identifiers
(numbers, symbols)
trash locations
Wayfaring- show where you
are in relation to park and
surrounding neighborhood
Wayfinding at all forks in
trails.
Weekly events
Where is swim beach
located?

Who to contact if there is a problem with a trail or park.
E.g. garbage everywhere or damaged property

WIFI
Wildlife in the area
Winter Trail conditions

Would like signs explaining the ecological habitats in the parks and why we need to protect them

Thinking about current or future signs, what would you change to make these more effective to help others understand and follow the rules?

"glad bathrooms are open."
A graphic for yielding
Add, "Clean up after yourself."
All the same format between signs.
Available on website
be clear and shorten it up
Be concise.
Bigger, easier to read.
bold
Bullet point lists
Bullet point the rules.
Capitalize, bold, and underline important information
Combine the two sentences that start with slow, why have lake elevation - who knows that? color of sign needs to be more vibrant and much larger
clarify confusing, ambiguous rules such as where pets are allowed (at tamarack the sign says "on paved trails only" but pets are NOT allowed on the paved trails within the nature center grounds)
Clarify pet policy.

Clarify: what does "park ordinance in effect" really mean?
clarity on where to fish
Clear language
Clearer about where dogs are and aren't allowed
clearly and specifically state rules for each user group near location they use/make signs large and catchy /current sign bland and confusing/need more signage
Colored Icons
coming here for 30 years and seen same sign/ time to change
consider listing general consequences that could result from not following the rules
Consistency
current background and text nonobtrusive and blend in with nature but changing background and text to high contrast helps with visibility and maybe those with sight impairment.
cute, fun,

Develop some branding around the signs to draw attention ("stay safe" "for everyone's enjoyment" or something similar)
Does high speed mean wake producing ?
don't need rules
Education about littering/trash and its impact on wildlife
encouraging people not to use lead sinkers
Enforcement
Enforcement. Official to point out when something is wrong
Explanations for some rules- example- footprints on groomed ski hills make courses less safe for skiers
Fines for not following rules
For park specific rules, display them in a highlighted fashion (italics for example)
Get people to pick up dog's poop
Graphics
Have a box with brochures/maps and rules at each entry point

Have a voluntary compliance safety themes
 ie. see something say something slogan
 he did not have a response to this question
 highlight lake direction
 highlight lake direction, wake and no wake times and rule enforcement
 Highlight most important rules.
 hours of operation
 I like the signage at the Shoreview dog park. It's at the entrance, clear, big and easy to see and easy to read. Succinct wording.
 Icons
 icons
 Icons and pictograms
 icons that are universal
 identify main rules and clearly state on a large sign that has bold lettering
 illustrations
 improved signage for lake rules and fishing
 Include a dispenser for pet waste pick-up bags to encourage compliance
 include a preface like "for the safety and enjoyment of your neighbors in this park..."
 include security info
 include where to anchor on lake
 Inclusive
 Increase font size

Individual signs along entrances/paths, so you only read a small bit.
 Information on how to report a violation of the rules.
 International symbols
 Keep it simple
 Keep it simple
 Keep them at boat launches, beaches, and major trail heads (right by the start to the actual trail, not in the parking lot or parking lot entrance).
 keep where is but bigger and bolder
 languages
 Larger text
 Less text
 Less words, more symbols.
 list no wake from this time to that time on specific days
 list only important rules for each water craft
 location and size
 location of launch sign
 good just need a better sign
 make inspirational
 Make it clear where dogs are allowed.
 Make rules easier to find on Web/social media
 make rules encouraging
 Make signs more inviting to read (white on brown means it isn't important and I don't read it)

Make the "no dogs" clearer
 Make the signage and rules the same at all county parks
 Make them easier to replace/insert updated info based on season or to repair after vandalism
 make them stand out more
 map of lake by kayak sign/signage indication
 where swim beach is and no swimming at launch
 Maybe a QR code for access to rules in a multitude of languages. Or more signs in more languages. Or a paper pamphlet attached to the main sign with alternative languages.
 Maybe some positive campaigning on the benefits of following the rules like it makes everyone's experience better
 more colorful
 More community officers out interacting with people in a non threatening manner
 more icons
 More language regarding litter/keeping TNC clean (emphasis on nature preserve clearly stated)
 more languages
 More symbols

More than one sign throughout park would help remind people.

Move fishing sign to pier and state fishing regulations and have a DNR presence

much larger sign/new color(no beige on white)separate board into two categories - one for wake and one for non-wake rules/flashing lights to draw attention to sign Multilingual

Multiple languages and more universal symbols! new fishing sign at pier with updated info

No changes

No changes

Not sure

Nothing they could think of. They just use the park to do walks.

Orient it towards hikers

Other languages

Other Languages - or perhaps a QR code to a web page or other source that lists the rules in other languages?

parking lot needs to be restriped

Participant stated that they don't really read the rules portion they just use the map

People don't read it.

People follow rules best when they understand why the rule is there.

Pets leashed

pictures

Pictures

pictures rather than text

Place on sign a link/QR code to find more safety information

Place sign out of the sun so they don't fade.

place signs where people can't avoid them.

emphasize specific rules in the spaces where they are most likely to be broken post no lifeguards /swim at your own risk

post no littering and where garbage cans are

Public education campaign and more enforcement

put a sign by canoe and kayak launch highlighting lake direction

Put in different languages

(or add brochures), and simplify for children and non-English speakers

QR code for translation

Remembers slogan sign from 80s: "Take nothing but pictures, leave nothing but footprints.". Bring this back

remind people about potential for theft

Remind to keep dogs on leash

remove boat launch from rules

require all who use lake to complete a boater class/ no boating zone by pier because now boaters take off from launch turn right into fishing area

Same as above

Same rules signs at each park

second language maybe

See answers to #10

see other responses from questions 2,4,5

separate rules from map

Short bullet lists are better than longer sentences - trim the fat

sign as to where beach is and no swimming at launch, state specific no wake times, state consequences for violations, make no wake sign bigger

Simpler

simplify and be clear

simplify/ less words/ the existing sign is confusing / some people visual learners so a few icons especially maybe for folks who have English as second or third language (picture of counterclockwise direction)

Simplify beach rules - remove things like 'patron must' and just go with

"swim only within designated swimming area" - it's brief, more commanding
some written rules ok
Standardize the rules across parks, list them in the same order
state consequences for breaking rules/ simplify so ELL can understand/keep Ramsey County phone number /is that current?
add a second sign in channel stating rules
Symbols.
Tell me where I can swim and where I can not

The words WELCOME, STAY AWHILE, BE KIND!!! sounds inviting and open to all. .

think grade school level
this tells about wake/speed but how about safety? The code link could also have a space for people to ask questions/ feedback
use both words and symbols to reinforce the message
use icons and illustrations
Use icons and universal symbols
use images not text
Use pictures.

Visual

What does "Park ordinance in effect" mean? Simplify that.
what does park ordinance in effect mean? can scooters and hovercraft ride on trails? why are trailers permitted if no boat launching?
Where are dogs allowed
why boat launch hours?
What park ordinance is in effect? Park hours should be on first line. A few pictures could help get message across
why is park ordinance line there / what is it

signs for walkers near walking trail, separate
signs for anglers near pier ,
separate sign for kayakers/canoes and
separate sign for boaters with activity specific info
none
none
Events; group activities
limit rules to the really important ones

Welcome

No alcoholic beverages except beer and wine.

Park Hours: 1/2 hour before sunrise to 1/2 hour after sunset.

Vehicles/trailers permitted only on roadways and parking lots.

Leashed pets permitted on trails. Owners must clean-up pet feces.

No pets allowed in picnic/beach areas.

Boat Launch hours: 5:00 a.m. -- 10:00 p.m.

Bikers/inline skaters must stay on paved trails and yield to pedestrians.



*Park Ordinance in effect. Enforced by the
Ramsey County Sheriff's Department.
Call 651-484-3366*



Vadnais Snail Lakes Regional Park

PARK RULES

No alcoholic beverages except beer and wine.

Park Hours: 1/2 hour before
sunrise to 1/2 hour after sunset.

Vehicles/trailers permitted only on roadways and parking lots.

Leashed pets permitted on paved trails only.

Owners must clean-up pet feces.

No pets allowed in picnic areas.

Bikers/inline skaters must stay on paved trails
and yield to pedestrians.

Boat launch hours: 5:00am-10:00pm

Park ordinance in effect.

Enforced by the Ramsey County Sheriff's Department.
Call 651-484-3366

RAMSEY COUNTY
Parks & Recreation
Green Spaces • Fun Places • Active Lives



www.co.ramsey.mn.us/parks Phone: (651) 748-2100

BATTLE CREEK

Regional Park

PARK RULES



Yield to others
as needed



Park hours
5a.m. - 11p.m.



Clean up
dog waste



Beer and
wine allowed



No smoking

ADDITIONAL RESOURCES



Scan QR code for additional
park information, seasonal maps
and full list of park regulations.
Or visit ramseycounty.us/BattleCreek



Find Ramsey County
park maps trails
on Avenza Maps™

BATTLE CREEK REGIONAL PARK LOCATION



BATTLE CREEK

Regional Park



PARK RULES



Yield to others
as needed



Park hours
5a.m. - 11p.m.



Clean up
dog waste



Beer and
wine allowed



No smoking

ADDITIONAL RESOURCES



Find Ramsey County park maps
trails on Avena Maps™



Scan QR code for additional park information,
seasonal maps and full list of park regulations.
Or visit ramseycounty.us/BattleCreek

**RAMSEY
COUNTY**
Parks & Recreation



Welcome Placeholder

PARK NAME Regional Park

PARK RULES

- 1. No Alcohol
- 2. No Pets
- 3. No Smoking
- 4. No Firearms
- 5. No Drones
- 6. No Off-Road Vehicles

PARK FEATURES


- 1. Picnic Area
- 2. Restrooms
- 3. Playground
- 4. Sports Field
- 5. Dog Park
- 6. Fishing
- 7. Hiking
- 8. Biking

ADDITIONAL RESOURCES

Scan QR code for additional park information.

For more information, visit [parkname.com](#) or call (555) 555-5555.

© 2023 Ramsey County Parks & Recreation



KEEP WILDLIFE WILD



PLEASE DO NOT FEED WILDLIFE

REGULAR FEEDING CAN CAUSE:

- Poor nutrition
- Spread of disease
- Pollution

© 2023 Ramsey County Parks & Recreation

YOUR VOICE MATTERS

Wildlife and habitat are essential to our community. We are working to protect and restore these resources for future generations.

LET US KNOW WHAT YOU THINK

We're updating our park ordinance. Learn more about the project and how you can share your feedback.

[ramseycounty.us/ParkOrdinanceProject](#)

© 2023 Ramsey County Parks & Recreation



Andrés Guzmán



BATTLE CREEK

Regional Park

PARK RULES



ADDITIONAL RESOURCES

Scan QR code for additional park information, seasonal maps and full list of park regulations. Or visit ramseycounty.co/battlecreek



RAMSEY COUNTY
Parks & Recreation

KEEP WILDLIFE WILD



PLEASE DO NOT FEED WILDLIFE

REGULAR FEEDING CAN CAUSE:

- Poor nutrition
- Spread of disease
- Pollution
- Overcrowding



YOUR VOICE MATTERS

Online survey open 1 to 4 weeks
Big let us know we're a priority. ramseycounty.co/yourvoice

LET US KNOW WHAT YOU THINK

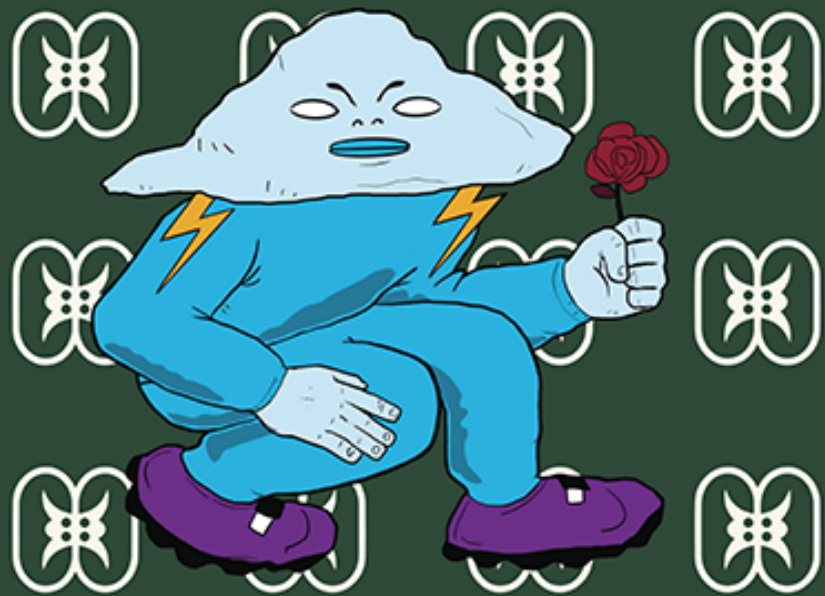
We're updating our park ordinance. Learn more about the project and how you can share your feedback.

ramseycounty.co/ParkOrdinanceProject





Witt Siasoco



Crice Kahlil



Marlena Myles



Xee Reiter

