



Community Partners

YEP partners with Saint Paul Public Schools and suburban Ramsey County school districts.

Community Resources

Ramsey County Children's Crisis

651-266-7878

Midwest Children's Resource Center

651-220-6750



160 East Kellogg Blvd.
St. Paul, MN 55101
(651) 266-5308
www.ramseycounty.us



Youth Engagement Program

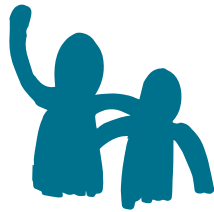
A short-term intervention program to help families and youth avoid the court system for runaway and truancy.



What we do

Youth Engagement Program (YEP) works with families and youth between the ages of 12-17 who are displaying runaway and/or truancy behaviors.

Social workers, families and youth work together as a team to find the underlying causes of truancy and runaway situations. This includes addressing issues such as school placement, family conflict, and the youth's mental and chemical health. YEP then provides short-term case management and community-based support services to reach goals set by everyone involved.



Assessment

YEP assessment team works with families and youth to identify the issues causing behaviors and help them access community resources around education, careers, family issues, and mental and chemical health.

The assessment team provides intensive, immediate support to families to prevent court intervention. Families participate on a voluntary basis.



YEP assessment line: 651-266-5308

What we don't do

The Youth Engagement Program is not intended to be punishment for truancy and runaway behaviors. YEP provides support and assistance for youth to re-engage in school and at home.



Case management

When the assessment process is unsuccessful, a truancy or runaway Child in Need of Protective Services petition may be filed through the Ramsey County Attorney's Office.

Through case management, YEP social workers regularly meet with youth and their families, and report to the court regarding progress in completing services. Youth may be court ordered to complete chemical health treatment, mental health assessments, and/or individual and family therapy.

On rare occasions, when community resources are not successful, youth can be placed outside of their home by the court to ensure their safety and well-being.



Referral

Referrals can be made by families, school staff, the County Attorney's Office, police and other county programs.