

LEGEND

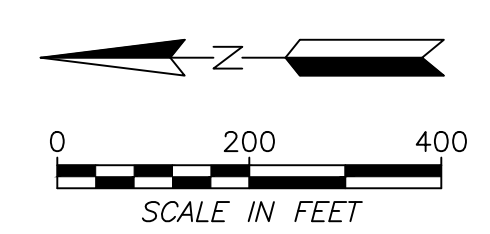
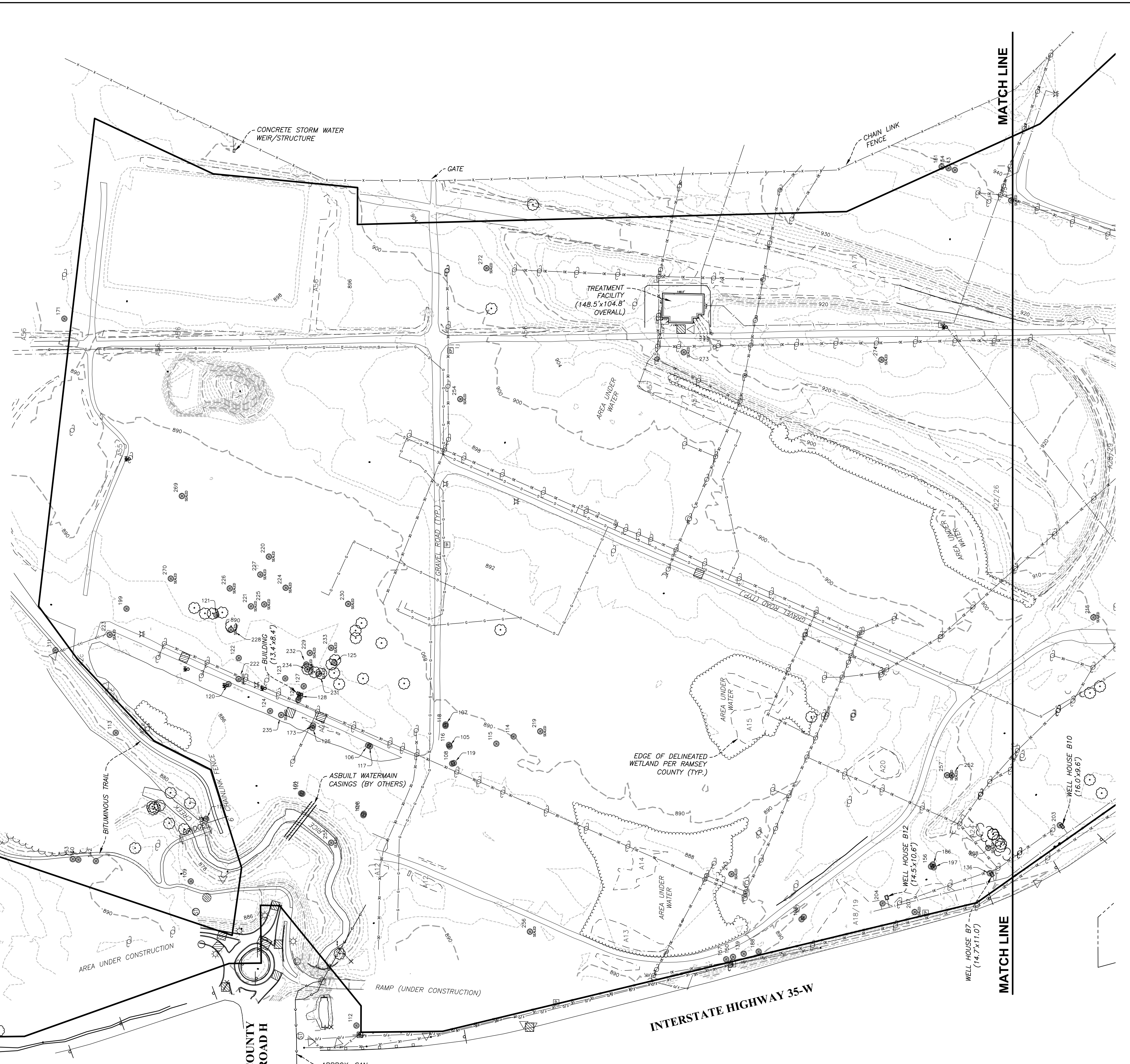
- x — x — FENCE LINE
- — — — — GUARD RAIL
- — — — — RETAINING WALL
- — — — — STORM SEWER
- — — — — SANITARY SEWER
- — — — — WATERMAIN
- — — — — UNDERGROUND GAS
- — — — — UNDERGROUND FIBER OPTIC
- — — — — UNDERGROUND ELECTRIC
- — — — — OVERHEAD ELECTRIC
- — — — — EDGE OF CONCRETE
- — — — — EDGE OF ASPHALT
- — — — — EDGE OF GRAVEL
- — — — — EDGE OF WETLAND
- — — — — EDGE OF WOODS
- — — — — SURVEYED PROP. LINE/PLAT BOUNDARY
- — — — — EXISTING CONTOUR (2 FOOT INTERVALS)
- X 898.5 EXISTING SPOT ELEVATION
- UTILITY POLE
- ANCHOR CABLE
- LIGHT POLE
- GATE
- DECIDUOUS TREE
- CONIFEROUS TREE
- SET IRON MONUMENT
- FOUND IRON MONUMENT
- BENCHMARK
- SANITARY SEWER MANHOLE
- STORM SEWER MANHOLE
- STORM SEWER INLET
- STORM SEWER INLET
- FLARED END SECTION
- WATER SERVICE SHUTOFF
- HYDRANT
- WATER WELL
- SEALED WATER WELL
- WATER GATE VALVE
- WATER SPIGOT
- GAS VALVE
- GAS METER
- TELEPHONE PEDESTAL
- ELECTRICAL PEDESTAL
- MANHOLE UNKNOWN
- TRAFFIC SIGN

KNOWN WELL TABLE

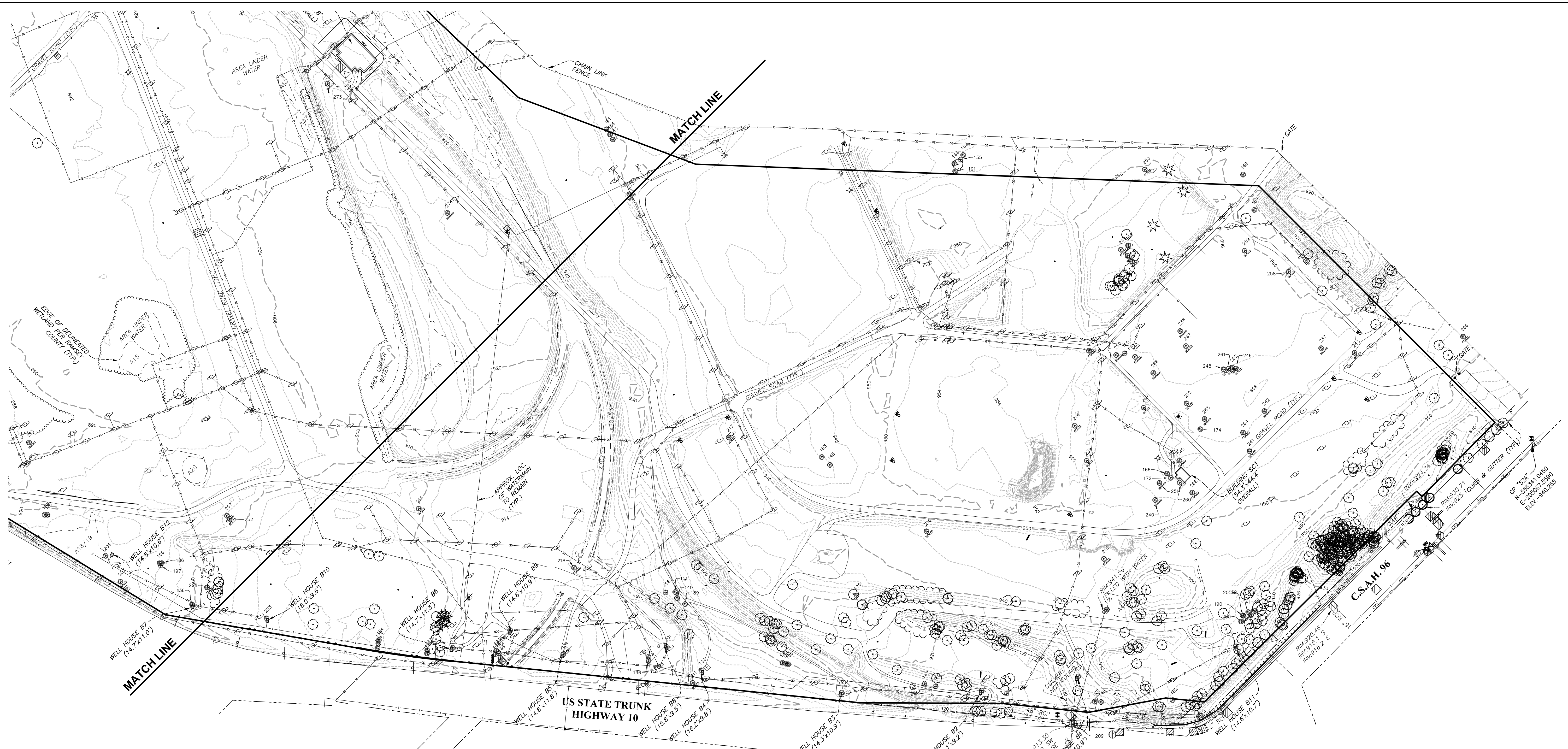
PT NO.	NORTHING	EASTING	ERIS	TYPE	SEALED	PT NO.	NORTHING	EASTING	ERIS	TYPE	SEALED
101	210823	551378	01URCID	MON	N	188	209198	550816	04U001	MON	N
102	210818	551377	01URCID	MON	N	189	206987	552486	04U002	MON	N
103	210650	551305	01UR225	MON	N	190	205382	554027	04U003	MON	N
104	210602	551300	01UR220	MON	N	191*	207446	554469	04U020	MON	N
105	210295	551545	01L581	MON	N	192	207373	551821	04U077	MON	N
106	210585	551548	01L582	MON	N	193	207576	551619	04U701	MON	N
107	210310	551623	01L583	MON	N	194	207731	551493	04U702	MON	N
108	210286	551483	01L584	MON	N	195	206535	553801	04U708	MON	N
109*	211215	551065	01U047	MON	N	196	206931	552222	04U709	MON	N
110*	211160	551287	01U048	MON	N	197	208576	551115	04U713	MON	N
111*	211696	551886	01U052	MON	N	198	209046	550931	04U714	MON	N
112*	210626	550553	01U065	MON	N	199	211443	552034	NA	MON	N
113*	211481	551583	01U128	MON	N	200	205589	554005	P#4003	MON	N
114	210968	551580	01U579	MON	N	201	206917	552313	P#4309	REM	N
115	210129	551554	01U580	MON	N	202	207407	551919	P#4310	REM	N
116	210298	551550	01U581	MON	N	203	208128	551264	P#4311	REM	N
117	210578	551545	01U582	MON	N	204	208758	550987	P#4313	REM	N
118	210310	551617	01U583	MON	N	205	205379	554027	01U003	MON	Y
119	210280	551486	01U584	MON	N	206*	205547	555435	01U004	MON	Y
120	211963	551766	01U603	MON	N	207	208644	550926	01U000	MON	Y
121	211124	552011	01U607	MON	N	208	208382	551184	01U051	MON	Y
122	211044	551859	01U612	MON	N	209*	205543	553246	01U053	MON	Y
123	210879	551786	01U615	MON	N	210	205933	553795	01U054	MON	Y
124	210833	551710	01U627A	PIEZ	N	211	206743	552285	01U062	MON	Y
125	210705	551843	01U618	MON	N	212	206139	554467	01U064	MON	Y
126	210782	551610	01U621	MON	N	213	209294	551091	01U130	MON	Y
127	210813	551759	01U625A	PIEZ	N	214	206391	554088	01U132	MON	Y
128	210826	551723	01U626A	PIEZ	N	215	208009	552003	01U524	PIEZ	Y
129	210833	551710	01U627A	PIEZ	N	216	206912	553372	01U525	PIEZ	Y
130	205905	553078	03F302	REM	N	217	207334	553079	01U526	PIEZ	Y
131	205674	553390	03F303	REM	N	218	207403	552275	01U527	PIEZ	Y
132	206295	552678	03F304	REM	N	219	209973	551598	01U578	MON	Y
133	206754	552345	03F305	REM	N	220	210937	552219	01U601	MON	Y
134	207189	552002	03F306	REM	N	221	211081	552042	01U602	MON	Y
135	207519	551707	03F307	REM	N	222	211045	551784	01U604	MON	Y
136	208377	551094	03F308	REM	N	223	211503	551941	01U605	MON	Y
137	205314	553919	03F312	REM	N	224	210878	552108	01U608	MON	Y
138	205782	553661	03F319	REM	N	225	210954	552049	01U609	MON	Y
139	209251	553908	03L001	MON	N	226	211076	552106	01U610	MON	Y
140	203027	552480	03L002	MON	N	227	210854	552155	01U611	MON	Y
141	205359	554051	03L003	MON	N	228	211073	551959	01U613	MON	Y
142*	211552	551137	03L013	MON	N	229	210792	551877	01U616	MON	Y
143	208501	553593	03L017	MON	N	230	210656	552051	01U619	MON	Y
144*	207470	554488	03L018	MON	N	231	210759	551803	01U620	MON	Y
145	206271	553287	03L022	MON	N	232	210864	551835	01U622	MON	Y
146	207357	551813	03L021	MON	N	233	210716	551895	01U623	MON	Y
147	206087	552936	03L077	MON	N	234	210801	551818	01U624A	PIEZ	Y
148	205537	553383	03L078	MON	N	235	210894	551656	01U628A	PIEZ	Y
149*	206624	552271	03L079	MON	N	236	206360	554653	01U631	MON	Y
150	209389	550797	03M019	MON	N	237	209115	550002	01U632	MON	Y
151	207049	552492	03M002	MON	N	238	206562	554340	01U634	MON	Y
152	205376	554052	03M003	MON	N	239	206259	554023	01U635	MON	Y
153*	211634	551144	03M013	MON	N	240	205955	554106	01U636	MON	Y
154	208524	553599	03M017	MON	N	241	206826	554509	01U638	MON	Y
155*	207463	554517	03M020	MON	N	242	206988	554665	01U639	MON	Y
156	208585	551118	03M713	MON	N	243	209807	555083	01U640	MON	Y
157	209313	550788	03U001	MON	N	244	206415	554453	01U652	MON	Y
158	207075	552464	03U002	MON	N	245	205997	554284	01U666	MON	Y
159	205360	554075	03U003	MON	N	246	206098	554704	01U667	MON	Y
160	203027	552480	03U002	MON	N	247	206988	554665	01U668	MON	Y
161*	208548	553604	03U017	MON	N	248	206131	554667	01U675	MON	Y
162*	207469	554537	03U020	MON	N	249	206757	554715	03L027	MON	Y
163	207016	553286	03U021	MON	N	250	206474	554405	03L028	MON	Y
164	206749	554747	03U027	MON	N	251	205990	554166	03L029	MON	Y
165	206458	554433	03U028	MON	N	252	206512	551442	03U084	MON	Y
166	205996	554214	03U029	MON	N	253*	206916	555008	03M509	DOM	Y
167	206493	555204	03U030	MON	N	254	210257	552778	03U031	MON	Y
168	207380	551808	03U077	MON	N	255	210716	551203	03U075	MON	Y
169	206048	552961	03U078	MON	N	256	210010	550887	03U076	MON	Y
170	205556	552961	03U079	MON	N	257	206528	551442	03U084	MON	Y
171*	211664	553064	03U083	MON	N	258	206223	555126	03U647	MON	Y
172	205973	554212	03U301	REM	N	259	206406	555061	03U648	MON	Y
173	210780	551619	03U3621	MON	N	260	205934	554224	03U674	MON	Y
174	206027	554433	03U659	MON	N	261	206118	554684	03U675	MON	Y
175	206228	552994	03U671	MON	N	262	206111	554697	03U676	MON	Y
176*	205204	554571	03U677	MON	N	263	206721	554716	04U027	MON	Y
177	207584	551628	03U701	MON	N	264	205897	554544	NA	MON	Y
178	207742	551510	03U702	MON	N	265	206044	554473	NA	MON	Y
179	205828	553140	03U703	MON	N	266	206319	554459	NA	MON	Y
180	206447	552955	03U708	MON	N	267	206247	554334	NA	MON	Y
181	206942	552333	03U709	MON	N	268	205871	554231	NA	MON	Y
182*	205341	553591	03U710	MON	N	269	211247	552434	NA	MON	Y
183	207389	551822	04J077	MON	N	270	211286	552141	NA	MON	Y
184	207749	551520	04J702	MON	N	271	206693	554713	P#4027	MON	Y
185	206526	552607	04J708	MON	N	272	210164	553243	P.S.	Y	
186	208679	551125	04J713	MON	N	273	209444	552945	P#4502	IND	Y
187	209037	550939	04J714	MON	N	274	208761	552918	P#4503	IND	Y
						275	208301	553485	P#4506	ABAND	Y

WELL TYPE KEY: MON=MONITORING WELL, P.S.=PUBLIC SERVICE, REM=REMEDIATION, IND=INDUSTRIAL, PIEZ=PIEZOMETER
* WELLS OUTSIDE THE PROPERTY BOUNDARY

KNOWN WELL TABULATION:
ACTIVE WELLS WITHIN PROPERTY: 86
SEALED WELLS WITHIN PROPERTY: 67



<p>Responsive partner. Exceptional outcomes.</p> <p>1802 WOODDALE DR. WOODBURY, MN 55125</p> <p>Ph: 651-395-5212</p>	CLIENT NAME	PROJECT TITLE	
	KIMLEY HORN	TOPOGRAPHIC SURVEY	
	DWN BY CNA	CHK'D XXX	APP'D XXX
PROJECT NO.	SHEET NO.		SCALE 1" = 200'
1382-0001	1 OF 2		



1. Field data for topographic survey collected 7/1/14-7/25/14, 11/7/16-11/11/16 and 7/10/17-7/28/17.
2. Tree survey information collected 7/23/14-7/25/14.
3. The survey data was collected in the Ramsey County Coordinate System NAD83 relative to the 1996 control adjustment.
4. Elevations depicted are based on NAVD88 Vertical Datum.
5. Significant trees were located and are shown on plans. Significant trees as defined in City of Arden Hills Code 1325.055 Tree Preservation. General definition: coniferous evergreen 15'+ height; deciduous hardwood 10'+ diameter, deciduous softwood 12'+ diameter (deciduous 8'+ diameter in areas considered to be for screening). For specific tree information, refer to "TCAAP Tree Survey Data" spreadsheet created by Wenck Associates. Dated 8/15/2014.
6. Well house designations (example: B3) have been shown consistent with "Fiscal Year 2012 Annual Performance Report New Brighton/Arden Hills Superfund Site" prepared for Twin Cities Army Ammunition Plant, prepared by Wenck Associates, Inc., date May 2103.
7. Locations of utilities have been determined by observed evidence together with plans received from utility owners and/or others per Gopher State One Ticket Number 141914189. Utility owners included on locate request ticket include: Arvig, City of Arden Hills, City of Moundsview, City of New Brighton, Comcast, MNDOT, MN Commercial Railway, Xcel Energy, Century Link, Zayo Group. Where additional or more detailed information is required, the client is advised that excavation may be necessary. This survey is not intended for construction purposes, prior to any digging or excavation call 811 - Gopher State One Call.
8. Sanitary sewer lines shown on plans are based on "TCAAP - Sanitary Sewer Improvements" drawings, sheets 4 & 5 of 10, prepared by Maier, Stewart & Associates Inc., dated Aug 1993.
9. Water main lines represented on this survey have been shown using found features (well houses) in combination with information depicted on TCAAP Site - Watermain/Steam Removal Plan" drawing prepared by Carl Bolander & Sons Co., not dated. This system is commonly referred to as TGRS (TCAAP Groundwater Recovery System). Accuracy of the underground locations of these facilities shown are approximate. If accurate locations of the underground portions of the water lines are required subsurface exploration, or other means of verification, should be used.
10. Wetland boundaries shown were delineated by, and received electronically from Ramsey County. Wetlands designations per Ramsey County TCAAP Redevelopment Wetland Delineation Report - April 2014. (example: A13 = area 13)
11. Underground gas lines and easements represented on this survey have been shown using information depicted on NSP Drawing Numbers 210-6-1 and 210-6-2, titled "NSP Gas System Easement - Gas Main Layout", dated 11-10-54. The underground location of these lines have not been marked or verified as part of the survey. If accurate locations of the underground portions of the gas lines are required subsurface exploration, or other means of verification, should be used.
12. FLOOD ZONE CLASSIFICATION: A small portion of this parcel is located in FEMA Flood Zone A as shown on FIRM Panel 0010G, Map #27123C0010G, Effective Date June 4, 2010.
13. Portions of the subject property are currently under active construction and demolition with ongoing excavation generally shown and labeled hereon.
14. This survey was conducted using local industry standard procedures and equipment and reflects the local standards of care and accuracies normally expected of large scale conventional topographic surveys.
15. Any areas or features which will be used for tie in of future engineering design of streets, grading or utilities should be verified by the designing engineer to ensure that the tie in meets the required positional and elevation precisions required of the design.
16. Numbered wells shown hereon are all those active and inactive known by Wenck to exist as of the date of this survey. Sealed well locations shown on this survey are based on numerous sources and records of widely varying detail and location accuracy. The surveyor has not verified the current existence, condition, or locations of the sealed wells and cannot guarantee that all sealed wells are shown hereon or that the ones shown are in their correct locations.
17. All features on the site are subject to change over time.

SURVEYORS CERTIFICATION:
 I hereby certify that this survey was completed by me or under my direct supervision and that I am a duly licensed land surveyor under the laws of the State of Minnesota.

Chris Ambourn
 Chris Ambourn
 LS 43055
 8/17/2017
 Date

REVISED 10-25-17... Well count correction and Note 16 clarification.



WENCK ASSOCIATES
 Responsive partner. Exceptional outcomes.
 1802 WOODDALE DR.
 WOODBURY, MN 55125
 Ph: 651-395-5212

CLIENT NAME	KIMLEY HORN		
PROJECT TITLE	TOPOGRAPHIC SURVEY		
DWN BY	CHK'D	APP'D	DWG DATE
CNA	XXX	XXX	8/17/2017
PROJECT NO.	SHEET NO.	SCALE 1" = 200'	
1382-0001	2 OF 2		