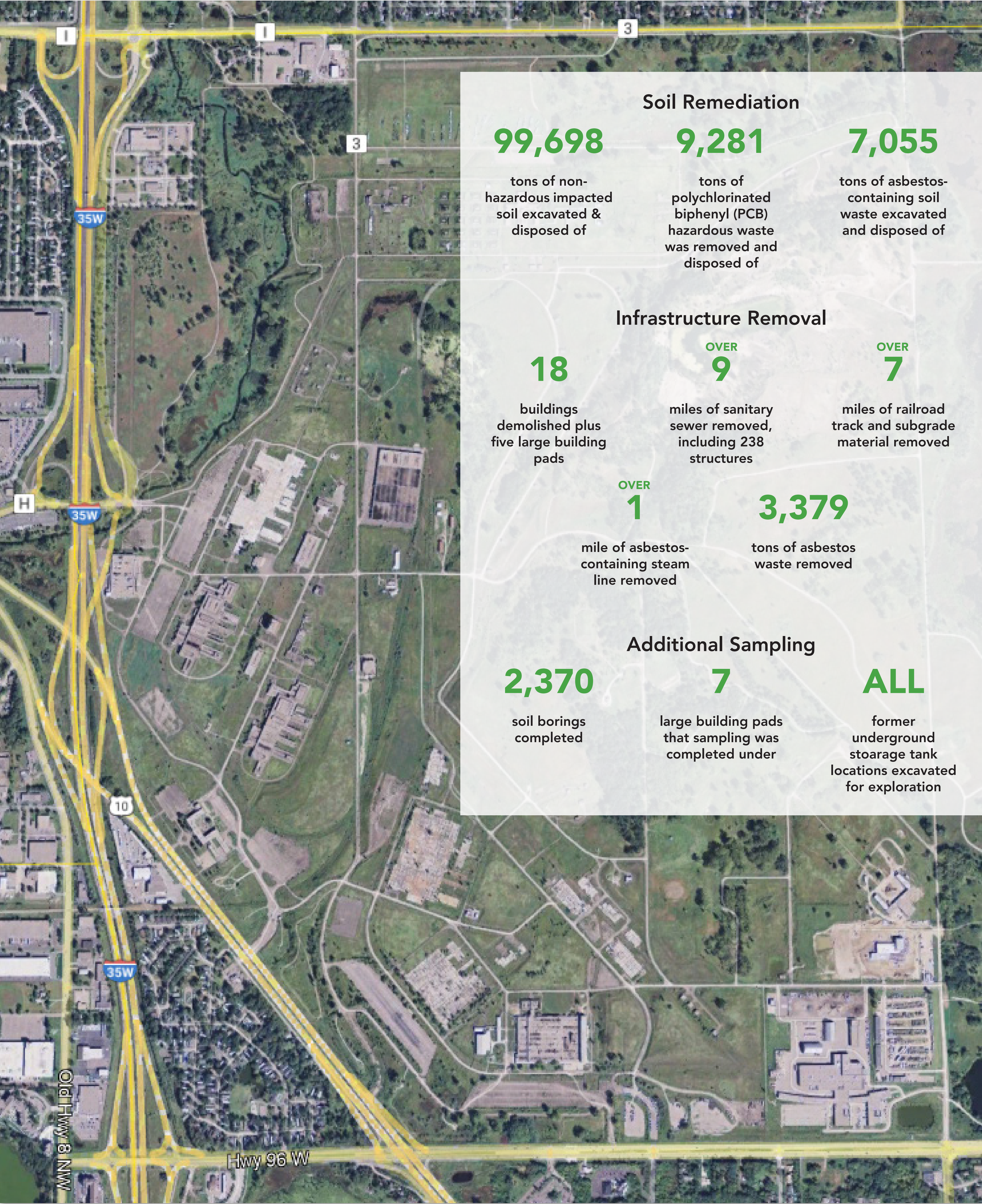


# Rice Creek Commons Remediation By the Numbers



## Soil Remediation

**99,698**

tons of non-hazardous impacted soil excavated & disposed of

**9,281**

tons of polychlorinated biphenyl (PCB) hazardous waste was removed and disposed of

**7,055**

tons of asbestos-containing soil waste excavated and disposed of

## Infrastructure Removal

**18**

buildings demolished plus five large building pads

**OVER 9**

miles of sanitary sewer removed, including 238 structures

**OVER 7**

miles of railroad track and subgrade material removed

**OVER 1**

mile of asbestos-containing steam line removed

**3,379**

tons of asbestos waste removed

## Additional Sampling

**2,370**

soil borings completed

**7**

large building pads that sampling was completed under

**ALL**

former underground storage tank locations excavated for exploration