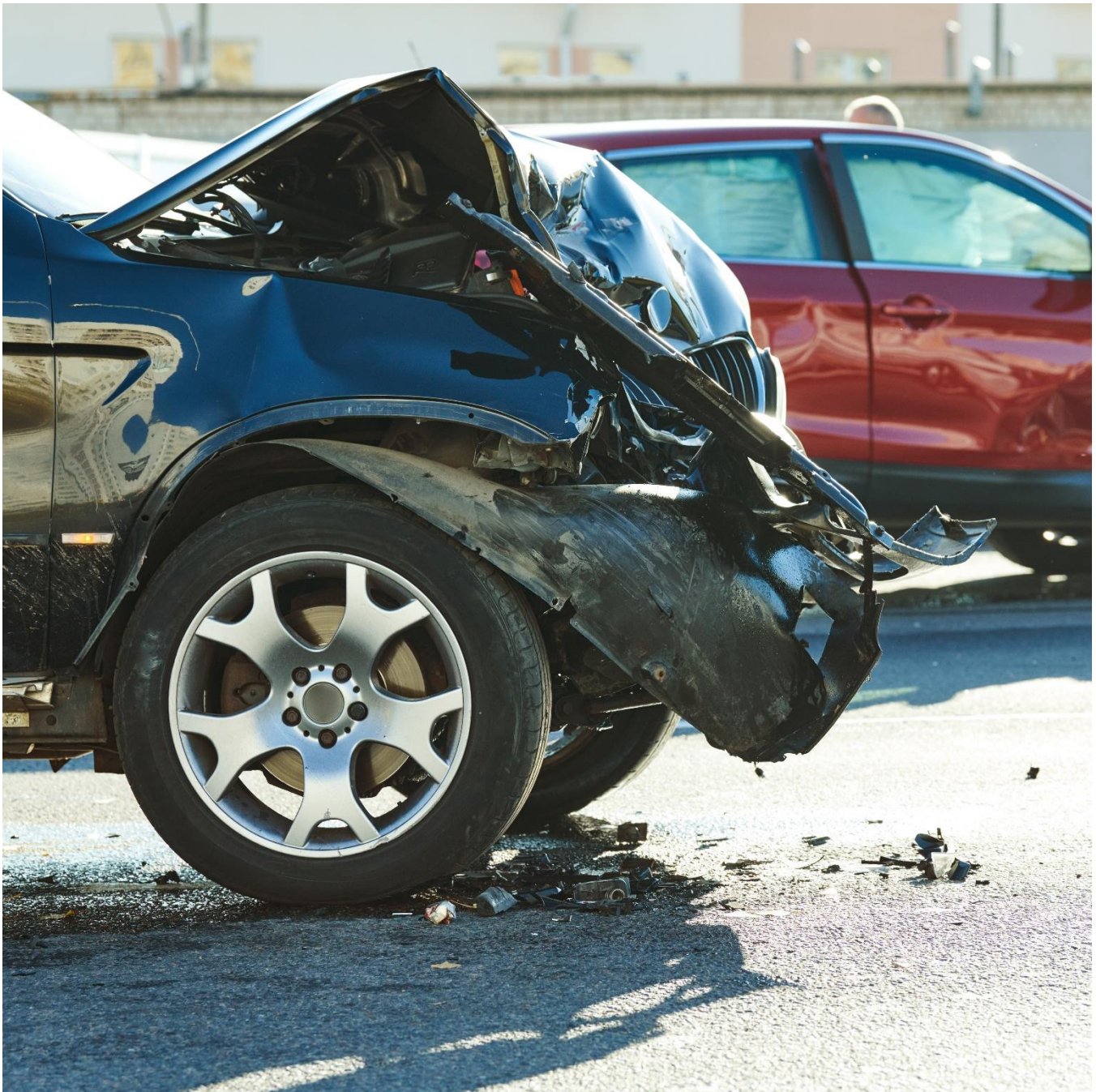


---

# INJURY

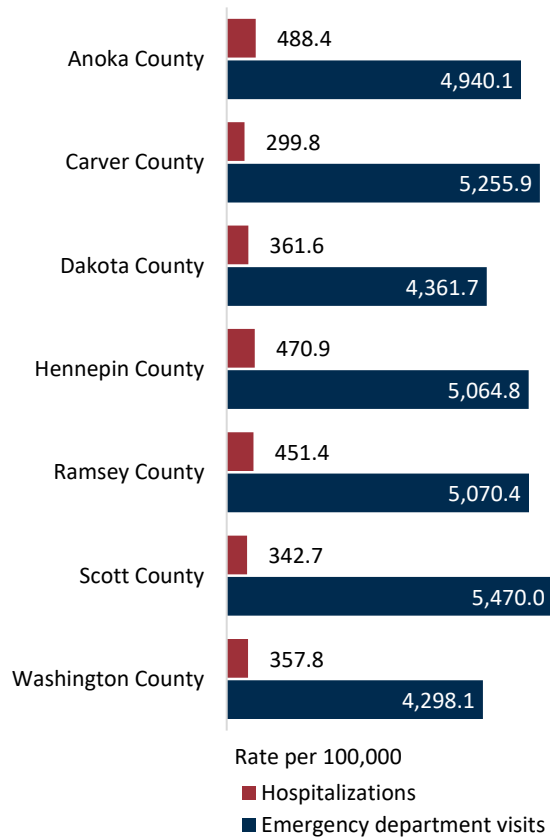
Motor vehicle crashes, gun violence, suicide, and unintentional drug overdoses are important public health concerns. In addition to their immediate health impact, the effects of injuries and violence extend well beyond the injured person or victim of violence, affecting family members, friends, coworkers, employers, and communities. According to the Centers for Disease Control and Prevention, injuries and violence are the leading cause of death for Americans age 1-44.<sup>29</sup>



## Injury overall

- In 2023, rates of emergency department visits and hospitalizations due to non-fatal injury were the third highest in Ramsey County among metro-area counties.

### 1. Non-fatal injuries by metro-area county, 2023

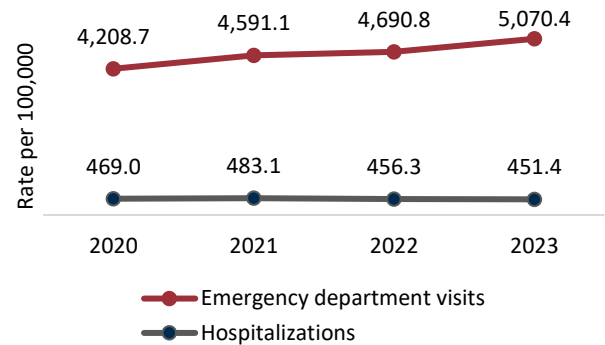


Source: Minnesota Hospital Association.<sup>133</sup>

Note: Only crude rates are reported because age-adjusted rates were unavailable.

- Ramsey County's rate of emergency department visits due to non-fatal injury increased steadily from 2020 to 2023, while hospitalizations stayed relatively flat.

### 2. Non-fatal injuries, Ramsey County

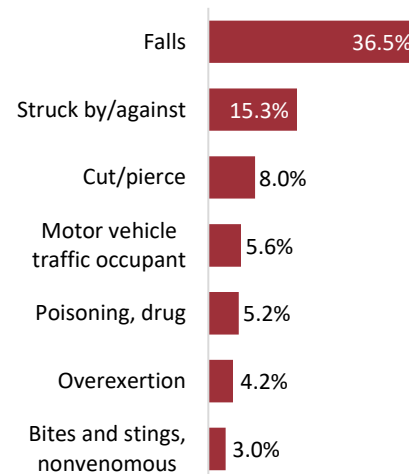


Source: Minnesota Hospital Association.<sup>133</sup>

Note: Only crude rates are reported because age-adjusted rates were unavailable.

- The most common non-fatal injuries that sent Ramsey County residents to the emergency department or hospital in 2023 were falls, followed by being struck by or against something.

### 3. Most common non-fatal injuries resulting in an emergency department visit or hospitalization, Ramsey County, 2023



Source: Minnesota Hospital Association.<sup>133</sup>

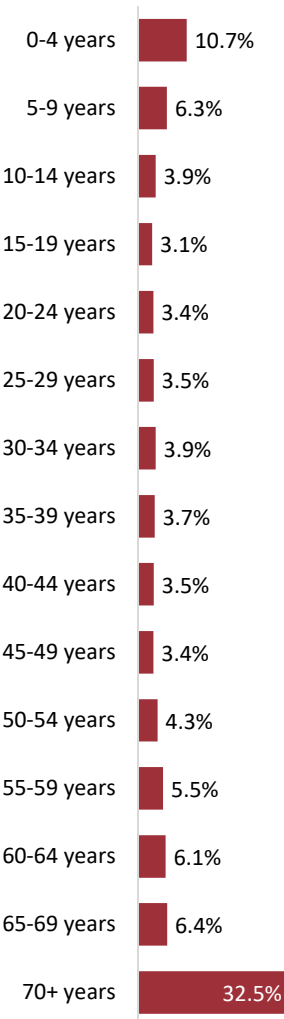
# Falls

## ! Risk Factors

Falls can result from occupational hazards, unsafe environments for people with poor balance and limited vision, and impairment from alcohol, drugs, or medication.<sup>18, 22</sup> Falls are especially common among older adults due to changes in gait and lower limb strength.<sup>44</sup>

- In 2023, one-third of unintentional fall-related injuries in Ramsey County were among residents age 70 and older. The next highest rates are seen among children age zero through four.

### 4. Emergency department visits and hospitalizations for unintentional falls, Ramsey County, 2023



Source: Minnesota Hospital Association.<sup>133</sup>

# Firearms

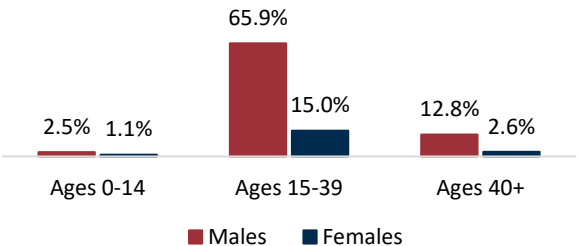
The majority of non-fatal firearm injuries are the result of assaults and unintentional injuries.<sup>77</sup> Safe storage of firearms, street outreach programs, gatekeeper programs, and hospital-based violence and suicide intervention programs can reduce firearm injuries and deaths.<sup>27</sup>

## ! Risk Factors

The most consistent predictor of gun violence is a history of violent behavior. Males are more likely to perpetrate gun violence compared to females.<sup>5</sup> Electronic health records (EHR) summary data from the Health Trends Across Communities (HTAC) Minnesota EHR Consortium show that 1% of health system encounters among Black males age 18-64 in Ramsey County involved firearm injury. Injuries include intentional self-harm, accidental, assault, and complications from a past firearm injury. Rates for other demographic groups were less than 1%.<sup>132</sup>

- Most emergency department visits and hospitalizations for firearm injuries in Ramsey County occur among male residents. Among both males and females, the majority of firearm injuries occur among individuals age 15 to 39.

### 5. Emergency department visits and hospitalizations due to non-fatal firearm injuries, Ramsey County, 2020-2023




Source: Minnesota Hospital Association.<sup>133</sup>



# Household poisonings

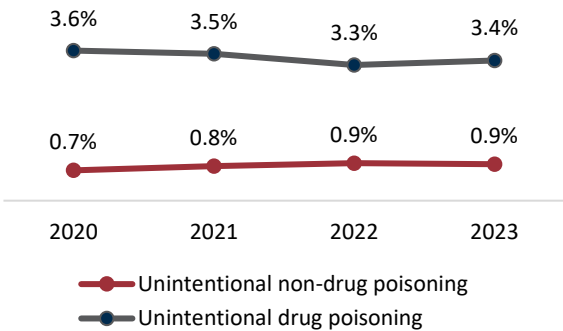
While poisoning injuries that involve drugs are more common, substances that are not drugs can be a poison if they are swallowed, inhaled, or absorbed. In 2023, 35% of Minnesota Poison Control System cases statewide involved children under age 6. Over 70% of all poison exposures (across all ages) were unintentional. The top non-drug substances involved in poisonings were household cleaners, and the top drug-related substances were analgesics.<sup>69</sup>

 **Risk Factors**

Infants and small children are at increased risk of household poisoning, as they are closer to the ground and tend to put things in their mouths. Improperly stored cleaning products, pesticides, car maintenance products, and other chemicals can be especially risky for young children. Boys experience poisoning injuries at higher rates than girls.<sup>134, 74</sup>

- In 2023, there were 934 unintentional drug poisoning injuries in Ramsey County, comprising 3.4% of all injury-related emergency department visits or hospitalizations. The rate for unintentional non-drug poisoning injuries was just under 1%.
- While low, Ramsey County’s rate of unintentional non-drug poisoning injuries increased steadily from 2020 to 2023.

## 6. Emergency department visits and hospitalizations for non-fatal poisoning injuries, Ramsey County



Source: Minnesota Hospital Association.<sup>133</sup>

- Ramsey County had the second highest rate of poisoning cases within metro-area counties in 2023.


## 7. Poisoning cases by metro-area county, 2023

County	Number of cases	Rate per 100,000
Anoka	2,130	571.9
Carver	697	615.0
Dakota	2,503	559.4
Hennepin	10,002	794.6
Ramsey	3,553	662.8
Scott	908	580.1
Washington	1,541	552.5

Source: Hennepin Healthcare.<sup>69</sup>

# Motor vehicle

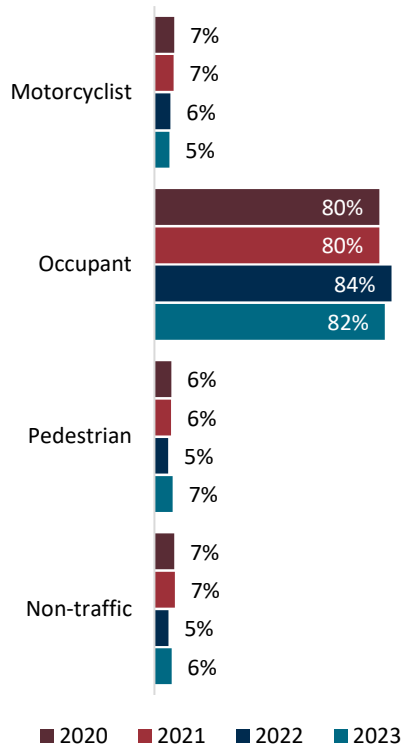
Motor vehicle crashes are a leading cause of injury and death. Drivers, passengers, cyclists, and pedestrians can be injured or killed due to distracted driving, impaired driving, and poor road conditions. Age-appropriate and properly installed car seats, helmets, and seatbelts can help prevent and reduce injury and death.<sup>24</sup>

 **Risk Factors**

Across all age groups, males are involved in more car crashes than females. Teens have higher crash rates than adults due to inexperience, distracted driving (e.g., texting while driving), excessive speeds, and risky driving. Older adults have higher crash rates than middle-aged adults – changes in vision, physical functioning, and ability to reason and remember can all contribute to increased risk.<sup>142, 24</sup>

- In 2023, 8% of visits to emergency departments and hospitalizations among Ramsey County residents for non-fatal injuries involved motor vehicle incidents. Most were occupant injuries.

## 8. Non-fatal injury-related emergency department visits and hospitalizations that involved motor vehicles, Ramsey County



Source: Minnesota Hospital Association.<sup>133</sup>

- Ramsey County has a higher percentage of residents with impaired driving incidents compared to Anoka, Carver, and Washington counties, but the percentage is lower compared to Hennepin County.

## 9. Residents with impaired driving incidents on record by metro-area county, 2022

County	Rank out of 87	Percentage
Anoka	79	8.3%
Carver	87	5.7%
Dakota	72	9.0%
Hennepin	65	10.0%
Ramsey	75	8.8%
Scott	74	8.9%
Washington	81	8.3%

Source: Minnesota Department of Public Safety.<sup>133</sup>

Note: Lower rankings indicate a higher percentage of residents with impaired driving incidents on record.

- The rate of motor vehicle crashes per 100,000 population was higher in Ramsey and Hennepin Counties compared to other metro-area counties.

## 10. Motor vehicle crashes by metro-area county, 2022

Crashes	Anoka	Carver	Dakota	Hennepin	Ramsey	Scott	Washington
Fatal crashes	23	9	24	60	29	12	8
Injury crashes	1,081	247	1,426	4,822	1,763	407	626
Crashes with only property damage	3,142	894	4,895	14,036	6,278	1,129	1,987
Total crashes	4,246	1,150	6,345	18,918	8,070	1,548	2,621
Crashes per 100,000	1,150.3	1,044.2	1,431.4	1,504.9	1,501.9	1,002.6	949.1
Number killed	28	9	24	61	31	13	9
Number injured	1,542	348	1,994	6,415	2,316	607	833

Source: Minnesota Department of Public Safety.<sup>133</sup>

