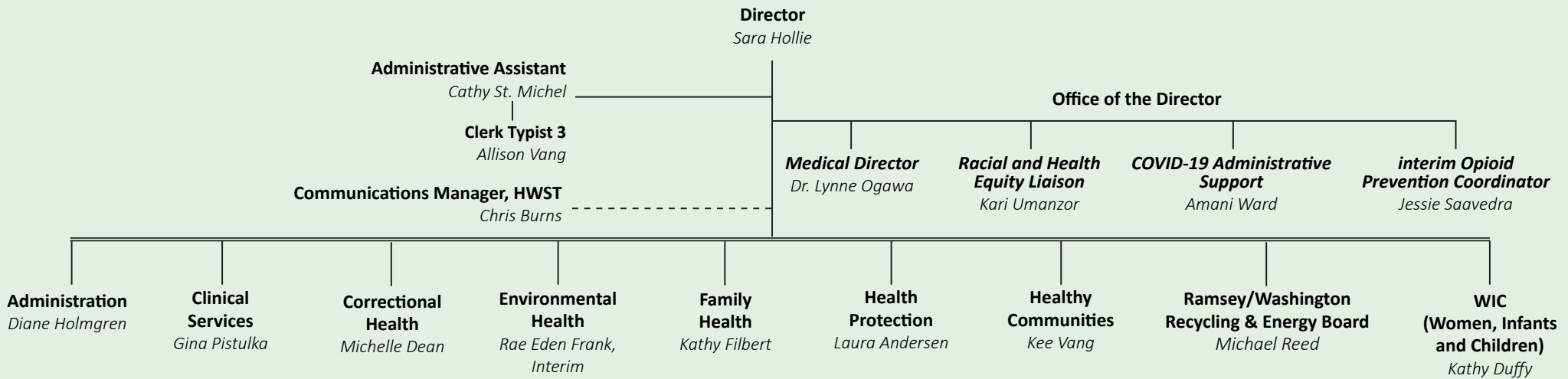


Saint Paul - Ramsey County Public Health

HEALTH AND WELLNESS SERVICE TEAM



Administration

Birth, Death and other Vital Records; Human Resources; Budgeting, Accounting, Procurement, and Payroll Services; Facilities Management; Information Services Technical Support & Coordination; Health Information Systems and Privacy Compliance; Employee Health and Safety; Health Laboratory; HouseCalls; Community Health Assessment, Data Analysis, Planning and Evaluation.

Clinical Services

Sexual Health, Tuberculosis, and Immunization Services; Perinatal Hepatitis B Prevention; Refugee Screening.

Correctional Health

Services provided to incarcerated individuals at the Ramsey County Correctional Facility (RCCF), Juvenile Detention Center (JDC) and the Adult Detention Center (ADC).

Environmental Health

Regulate, as an MDH and MDA delegated agency, food service and retail food establishments, lodging facilities, public swimming pools, and manufactured home parks. Engage residents on healthy housing through lead hazard control and remediation, radon detection and mitigation, funding and materials for safe and healthy homes and public health nuisance response. Regulate solid and hazardous waste management activities. Waste management activities for reduction, reuse, recycling, and waste processing, including community engagement, planning, policy development, partnerships, service delivery, financing and revenue collection. Policy work on environmental justice, energy planning, climate change and resilience.

Family Health

Targeted Home Visiting Services for Pregnant and Parenting Families At-Risk, including Refugees and Immigrants, Teen Parents, and Children with Special Health Care Needs; Assessment and Case Management for Teen Parents on Minnesota Family Investment Program (MFIP); Childhood Asthma Management; Childhood Lead Poisoning Prevention; Early Intervention for children birth to five. The Community Outreach team collaborates with Ramsey County residents and stakeholders in activities aimed at reducing health disparities including improving birth outcomes through the Birth Equity Community Council (BECC), Club Mom and Club Dad.

Health Protection

Public Health Emergency Response Planning, Training and Recovery Capabilities; Medical Reserve Corps Management; Communicable Disease Surveillance, Investigation and Control.

Healthy Communities

Chronic Disease Prevention (Statewide Health Improvement Partnership – SHIP); Child and Teen Checkups Outreach; Family and Community Violence Prevention; Adolescent Health Promotion/Teen Pregnancy Prevention; Hmong Community Health Promotion; Healthy Aging; Mental Wellbeing and Health Equity; SOS Sexual Violence Services.

WIC (Women, Infants and Children)

Nutrition Assessment and Education; Basic Health Screenings; Referrals and Vouchers for supplemental nutritious foods for pregnant and breastfeeding women, women who have recently given birth, infants and children up to age five.

November 2021

Public Health Offices

- **Public Health Main Office**
90 Plato Boulevard West, Suite 200, Saint Paul
- **Public Health Center**
555 Cedar Street, Saint Paul
- **Environmental Health**
2785 White Bear Avenue, Maplewood

Community Services Sites

- 6 WIC Clinics
- 8 Yard Waste & Household Hazardous Waste Collection Sites
- 3 Correctional Health Sites
- Our staff work in a variety of other settings out in the community:
 - with individuals in their homes,
 - at businesses,
 - at schools,
 - community health clinics,
 - social service agencies, and other government agency sites.

