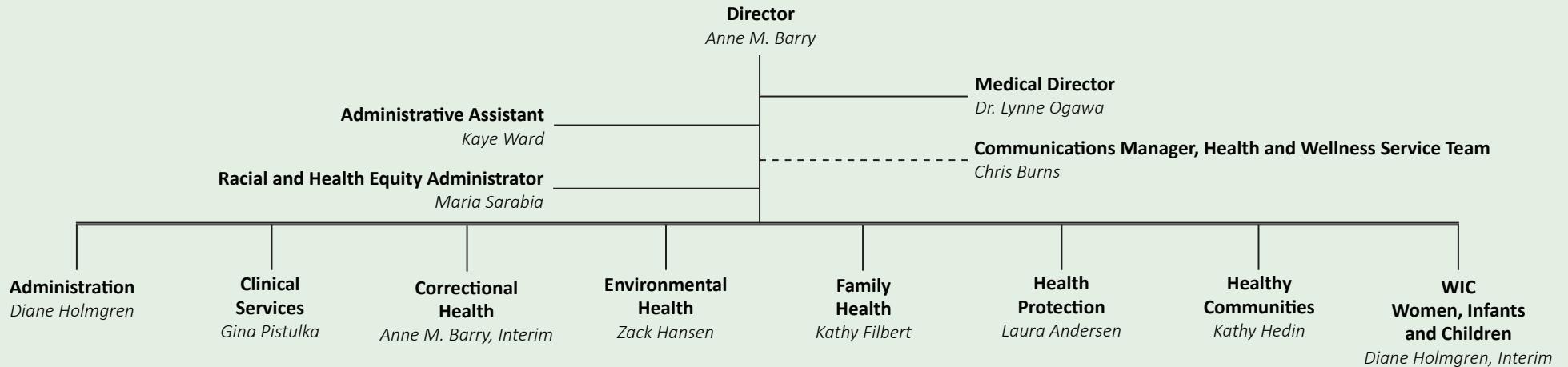


# Saint Paul - Ramsey County Public Health

H E A L T H   A N D   W E L L N E S S   S E R V I C E   T E A M



## Administration

Birth, Death and other Vital Records; Human Resources; Budgeting, Accounting, Procurement, and Payroll Services; Facilities Management; Information Services Technical Support & Coordination; Health Information Systems and Privacy Compliance; Employee Health and Safety; Health Laboratory; HouseCalls; Community Health Assessment, Data Analysis, Planning and Evaluation.

## Clinical Services

Sexual Health, Tuberculosis, and Immunization Services; Perinatal Hepatitis B Prevention; Refugee Screening.

## Correctional Health

Services provided to incarcerated individuals at the Ramsey County Correctional Facility (RCCF), Juvenile Detention Center (JDC), Boys Totem Town (BTT) and the Adult Detention Center (ADC).

## Environmental Health

Resource Recovery Project management; Policy development, evaluation, and planning of Waste Reduction, Recycling, and Solid and Hazardous Waste issues; Education, promotion and assistance to households and businesses on environmental health issues; Delegated MDH licensing and inspections of Food and Lodging, Manufactured Home Parks, Public Swimming Pools, Radon Detection, Public Health Nuisance Control; Solid and Hazardous Waste Compliance: Solid Waste Haulers and Hazardous Waste Generators.

## Family Health

Targeted Home Visiting Services for Pregnant and Parenting Families At-Risk, including Refugees and Immigrants, Teen Parents, and Children with Special Health Care Needs; Assessment and Case Management for Teen Parents on Minnesota Family Investment Program (MFIP); Childhood Asthma Management; Childhood Lead Poisoning Prevention; Early Intervention for children birth to five.

## Health Protection

Public Health Emergency Response Planning, Training and Recovery Capabilities; Medical Reserve Corps Management; Communicable Disease Surveillance, Investigation and Control.

## Healthy Communities

Chronic Disease Prevention (Statewide Health Improvement Partnership – SHIP); Child and Teen Checkups Outreach; Family and Community Violence Prevention; Adolescent Health Promotion/Teen Pregnancy Prevention; Hmong Community Health Promotion; Healthy Aging; Mental Wellbeing and Health Equity; SOS Sexual Violence Services.

## WIC (Women, Infants and Children)

Nutrition Assessment and Education; Basic Health Screenings; Referrals and Vouchers for supplemental nutritious foods for pregnant and breastfeeding women, women who have recently given birth, infants and children up to age five.

January 2019

## Public Health Offices

- **Public Health Main Office**  
90 Plato Boulevard West, Suite 200, Saint Paul
- **Public Health Center**  
555 Cedar Street, Saint Paul
- **Environmental Health**  
2785 White Bear Avenue, Maplewood
- **Family Health**  
1670 Beam Avenue, Suite 101, Maplewood

## Community Services Sites

- 6 WIC Clinics
- 8 Yard Waste & Household Hazardous Waste Collection Sites
- 4 Correctional Health Sites
- Our staff work in a variety of other settings out in the community:
  - with individuals in their homes,
  - at businesses,
  - at schools,
  - community health clinics,
  - social service agencies, and other government agency sites.

