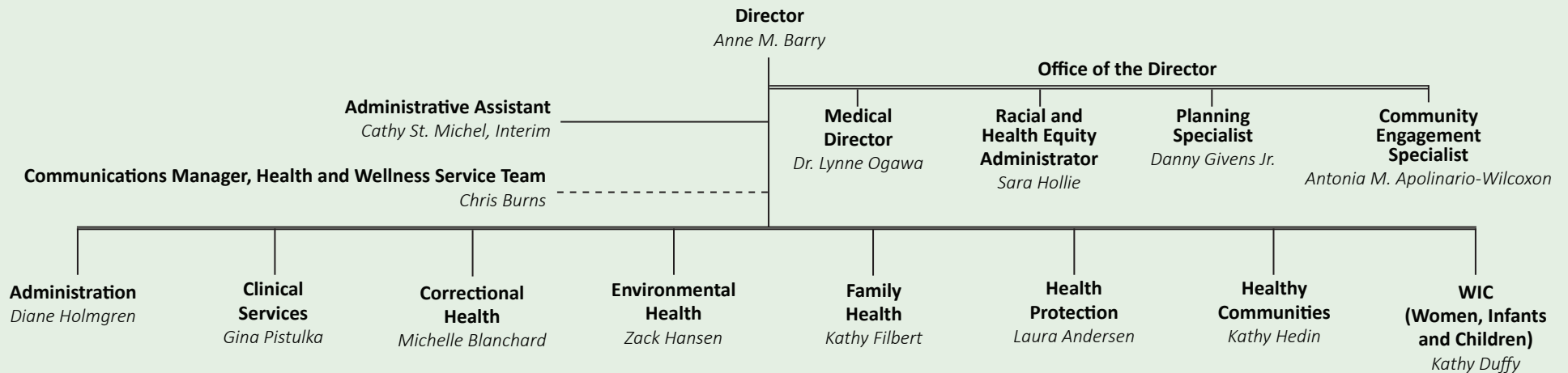


# Saint Paul - Ramsey County Public Health

H E A L T H   A N D   W E L L N E S S   S E R V I C E   T E A M



## Administration

Birth, Death and other Vital Records; Human Resources; Budgeting, Accounting, Procurement, and Payroll Services; Facilities Management; Information Services Technical Support & Coordination; Health Information Systems and Privacy Compliance; Employee Health and Safety; Health Laboratory; HouseCalls; Community Health Assessment, Data Analysis, Planning and Evaluation.

## Clinical Services

Sexual Health, Tuberculosis, and Immunization Services; Perinatal Hepatitis B Prevention; Refugee Screening.

## Correctional Health

Services provided to incarcerated individuals at the Ramsey County Correctional Facility (RCCF), Juvenile Detention Center (JDC), Boys Totem Town (BTT) and the Adult Detention Center (ADC).

## Environmental Health

Resource Recovery Project management; Policy development, evaluation, and planning of Waste Reduction, Recycling, and Solid and Hazardous Waste issues; Education, promotion and assistance to households and businesses on environmental health issues; Delegated MDH licensing and inspections of Food and Lodging, Manufactured Home Parks, Public Swimming Pools, Radon Detection, Public Health Nuisance Control; Solid and Hazardous Waste Compliance: Solid Waste Haulers and Hazardous Waste Generators.

## Family Health

Targeted Home Visiting Services for Pregnant and Parenting Families At-Risk, including Refugees and Immigrants, Teen Parents, and Children with Special Health Care Needs; Assessment and Case Management for Teen Parents on Minnesota Family Investment Program (MFIP); Childhood Asthma Management; Childhood Lead Poisoning Prevention; Early Intervention for children birth to five. The Community Outreach team collaborates with Ramsey County residents and stakeholders in activities aimed at reducing health disparities including improving birth outcomes through the Birth Equity Community Council (BECC), Club Mom and Club Dad.

## Health Protection

Public Health Emergency Response Planning, Training and Recovery Capabilities; Medical Reserve Corps Management; Communicable Disease Surveillance, Investigation and Control.

## Healthy Communities

Chronic Disease Prevention (Statewide Health Improvement Partnership – SHIP); Child and Teen Checkups Outreach; Family and Community Violence Prevention; Adolescent Health Promotion/Teen Pregnancy Prevention; Hmong Community Health Promotion; Healthy Aging; Mental Wellbeing and Health Equity; SOS Sexual Violence Services.

## WIC (Women, Infants and Children)

Nutrition Assessment and Education; Basic Health Screenings; Referrals and Vouchers for supplemental nutritious foods for pregnant and breastfeeding women, women who have recently given birth, infants and children up to age five.

May 2019

## Public Health Offices

- **Public Health Main Office**  
90 Plato Boulevard West, Suite 200, Saint Paul
- **Public Health Center**  
555 Cedar Street, Saint Paul
- **Environmental Health**  
2785 White Bear Avenue, Maplewood
- **Family Health**  
1670 Beam Avenue, Suite 101, Maplewood

## Community Services Sites

- 6 WIC Clinics
- 8 Yard Waste & Household Hazardous Waste Collection Sites
- 4 Correctional Health Sites
- Our staff work in a variety of other settings out in the community:
  - with individuals in their homes,
  - at businesses,
  - at schools,
  - community health clinics,
  - social service agencies, and other government agency sites.

