

Meeting Date: 06/01/2017

Prepared by: Michelle Prosser

F1. Information Provided On:

Update on 2017 Conservation Forum Planning

Summary:

Staff continue to plan the remaining 2017 RCD Conservation Forums with input from the RCD Board.

Topics, speakers and locations are tentatively set as follows:

Tuesday, June 20, 2017 from 9-11 a.m.

- One Watershed One Plan

- Brian Watson with the Dakota SWCD will present. Marcey Westrick, BWSR, has been asked to present.

- Location: RCD

July 2017

- Staff are working with Supervisor Buggs

- Topics being considered are: Environmental Justice and Green Infrastructure

- Location, date, time: TBD

Wednesday, August 16, 2017 from 9-11 a.m.

- Soil Health

- Kristin Brennan, assistant state soil scientist with the NRCS will present. The U of MN has been asked to set up their mobile soil lab and test participants soil for lead. Forum will include a tour of the demonstration garden at Urban Roots that is being supported by an RCD grant.

- Location: Urban Roots

Wednesday, September 20, 2017 from 9-11 a.m.

- Tentative Tour

- To be discussed

Wednesday, October 18, 2017 from 7-9 p.m.

-State of the Waters

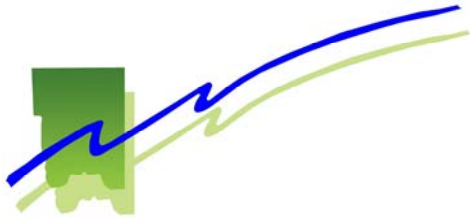
-Topics/Speakers being considered are:

Lead in Our Drinking Water, Justine Roe, St. Paul Regional Water Services

Severe Weather and Community Resilience, Mark Seeley, U of MN Climatologist

Emerging Contaminants: PPCPs in Drinking Water, Linc Stine, MPCA Commissioner





Meeting Date: 06/01/2017

Prepared by: Michelle Prosser

G1. Information Provided On:
2017 State of the Waters Event

Summary:

RCD holds a State of the Waters informational forum every fall. As planning begins for this event, staff would like to request input from the RCD Board on topics and speakers to include.

Tentatively scheduled for Wednesday, October 18, 2017 from 7-9 p.m.

-State of the Waters

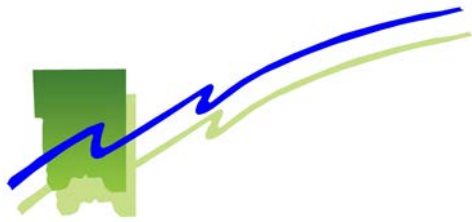
-Topics/Speakers being considered are:

Lead in Our Drinking Water, Justine Roe, St. Paul Regional Water Services

Severe Weather and Community Resilience, Mark Seeley, U of MN Climatologist

Emerging Contaminants: PPCPs in Drinking Water, Linc Stine, MPCA Commissioner





Meeting Date: 06/01/2017

Grant: FY2014 Wakefield Lake Watershed

Prepared by: Michael Schumann

Contract Number: FY14-02

H. Purpose/Action Requested:

Authorize the execution of a contract not to exceed \$30,000 or 75% of eligible cost, for use of remaining grant funds, for the installation of curb cut raingardens within the Wakefield Lake Watershed.

Summary:

In 2014, Ramsey Conservation District (RCD) Staff received a grant to implement bio-retention water quality practices within the various sub-watersheds of Wakefield Lake. To prioritize project types and specific locations, RCD staff referenced the sub-watershed analysis report [developed by the RCD] for Wakefield Lake, to identify the most cost-effective practices to reduce runoff and pollution within the area. Stormwater runoff from the street drains directly to Wakefield Lake untreated. Wakefield Lake is designated a Priority Area by local Watershed District (Ramsey-Washington Metro Watershed District) as a water resource of concern.

RCD staff is in the process of developing construction designs and plans for installing a series of curb cut raingardens, to capture and infiltrate stormwater runoff from the street before directly entering the water resource.

These projects are a collaboration of efforts between the RCD, City of Maplewood and Ramsey-Washington Metro Watershed District

Conservation Practice Information:

Project Name: Wakefield Lake Watershed

Project Location: [Varied] Maplewood, MN 55119

Spokesperson: Steve Love; City of Maplewood

Conservation Practice Category: Infiltration; 570 – Stormwater Runoff Control

Cost Share Assistance Request for the following practice(s):

Conservation Practice 712:

1. *Total Project Cost:* TBD
2. *BWSR Cost Share encumbrance request for eligible components:* 75%/\$30,000.00
3. *Local Match provided by:*
 - a. Ramsey-Washington Metro Watershed District: 25%/TBD
 - b. Landowner Contribution: Canabury Pond Condominium: 0% / \$0.00

Explanation of Fiscal/FTE Impact:

Project Funds and staff costs to install the project(s) are available through a FY14 Clean Water Fund grant and Technical and Administrative amount to be consistent with percentages outlined in the grant work plan. Designated Technical Representative for the project is: Joe Lochner, Ramsey Conservation District Staff.

Project Timeline:

The project must be completed by October 1, 2017, unless otherwise amended by mutual consent and agreement by both parties.

Supporting Documents:

Wakefield Project Locations Map; FY14-02 Fact Sheet



2015 Aerial

- Parcel Point
- ▭ Parcel Poly

0 212.5 425 Feet

WAKEFIELD PROJECTS
MAPLEWOOD, MN 55109
[RWMWD]



Ramsey Conservation District



CLEAN WATER FUND 2014

WAKEFIELD LAKE SUBWATERSHED RAINGARDENS

MAPLEWOOD, MN

Project Goal:

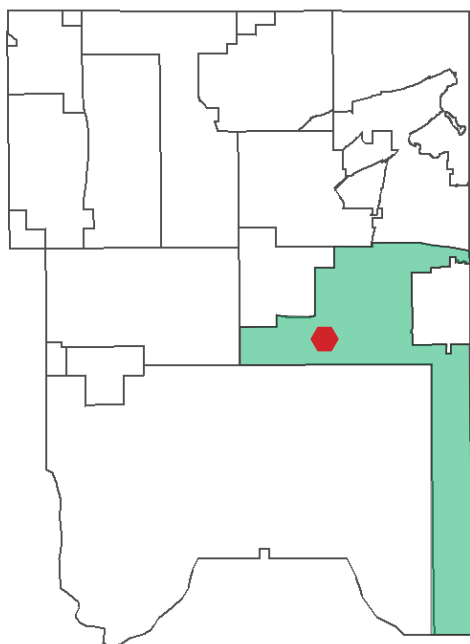
To provide technical assistance and cost share funding for partners and communities interested in protecting water resources through runoff and pollutant reduction projects that will help reduce Runoff Volume, Total Phosphorous (TP), and Total Suspended Solids (TSS).

Location:

[8] Projects in total with varied addresses

Maplewood, MN 55109

Ramsey Washington Metro Watershed District



Project Stats:	Project Costs:
Linear Feet: 1,600	Project Cost: \$ TBD
TP Red. (lbs./yr): 2.5	BWSR/RCD Grant: \$ 30,000
TSS Red. (lbs./yr): 125.36	RWMWD Funding: \$ TBD
Vol. Red. (cu-ft/yr): 20,920	Owner Cost: \$ 0.00



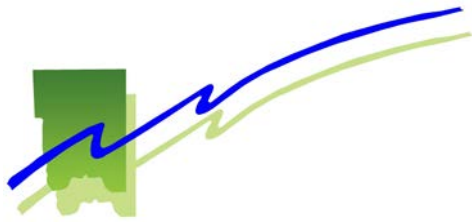
Project Funding:

Funding for this project was provided by the Ramsey Conservation District (RCD) by a grant offered by MN Board of Water and Soil Resources (BWSR) through funding provided by the Clean Water Fund, Ramsey-Washington Metro Watershed District (RWMWD) and City of Maplewood.



1425 Paul Kirkwold Drive Arden Hills, MN 55112
Phone: 651-266-7270 • www.ramseycounty.us





Meeting Date: 06/01/2017

Grant: FY2015 Community Partners

Prepared by: Michael Schumann

Contract Number: CP15-07

I. Purpose/Action Requested:

Authorize the execution of a contract not to exceed \$5,000 or 75% of the total eligible cost, with the Shepherd of the Hills Church for the installation of two raingardens.

Summary:

In 2016, Ramsey Conservation District (RCD) Staff conducted a site visit per the request of Shepherd of the Hills to discuss potential water quality projects that could be incorporated into a retrofit of the property. RCD staff provided technical assistance and the review of construction designs. A stormwater analysis was completed for the site to verify the priority of project types and specific locations, and the cost-effective benefit to reduce runoff and pollution from the site.

Shepherd of the Hills Church has developed plans for installing the two most cost effective projects verified through the assessment. Two raingardens are proposed on the backside of the building to convey, capture and infiltrate roof runoff.

Conservation Practice Information:

Project Name: Shepherd of the Hills

Project Location: 3920 N Victoria Street, Shoreview, MN 55126

Spokesperson: Miranda Oliver; Director of Operations, for Shepherd of the Hills Church

Conservation Practice Category: Infiltration; 570 – Stormwater Runoff Control

Cost Share Assistance Request for the following practice(s):

Conservation Practice 570:

1. *Total Project Cost:* \$25,148.50
2. *BWSR Cost Share encumbrance request for eligible components:* 20% / \$5,000
3. *Local Match provided by:*
 - a. Ramsey-Washington Metro Watershed District: 75% / \$18,861.00
 - b. Landowner Contribution: Shepherd of the Hills Church: 5% / \$1,287.50

Explanation of Fiscal/FTE Impact:

Project Funds and staff costs to install the project(s) are available through a FY15 Clean Water Fund grant and Technical and Administrative amount to be consistent with percentages outlined in the grant work plan. Designated Technical Representative for the project is: Joe Lochner, Ramsey Conservation District Staff.

Project Timeline:

The project must be started by November 1, 2017 and completed by November 1, 2018, unless otherwise amended by mutual consent and agreement by both parties.

COMMUNITY PARTNERS GRANT 2015

SHEPHERD OF THE HILLS CHURCH

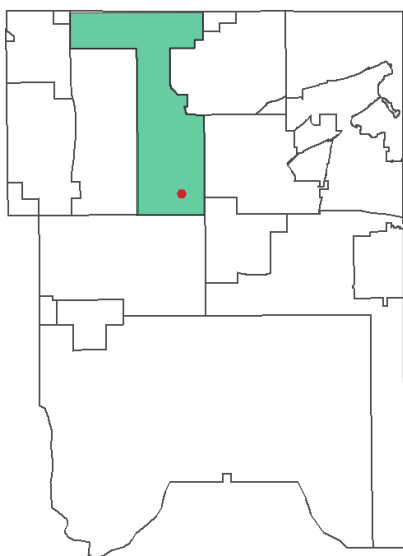
SHOREVIEW, MN

Project Goal:

To provide technical assistance and cost share funding for community partners interested in installing runoff and pollutant reduction projects that will help reduce Runoff Volume, Total Phosphorous (TP), and Total Suspended Solids (TSS).

Location:

3920 N Victoria Street
Shoreview, MN 55126
Ramsey-Washington Metro Watershed District



Project Stats:	Project Costs:
Square Feet: 850 SQ-FT	Project Cost: \$25,148
TP Red. (lbs./yr): 0.20	BWSR/RCD Grant: \$5,000
TSS Red. (lbs./yr): 36	RWMWD Funding: \$18,861
Vol. Red. (cu-ft/yr): 10,460	Owner Cost: \$1,287



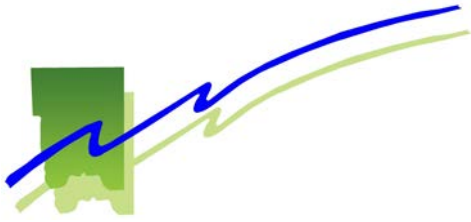
Project Funding:

Funding for this project was provided by the Ramsey Conservation District (RCD) by a grant offered by MN Board of Water and Soil Resources (BWSR) through funding provided by the Clean Water Fund, Ramsey-Washington Metro Watershed District (RWMWD), and the landowner.



1425 Paul Kirkwold Drive Arden Hills, MN 55112
Phone: 651-266-7270 • www.ramseycounty.us





Meeting Date:06/01/2017

Prepared by: Lena Buggs

J. Purpose/Action Requested:

Review and approval of the Racial Equity & Inclusion Policy (Decision)

Summary:

Attached is the draft policy.

Explanation of Fiscal/FTE Impact:

Ramsey Conservation District Racial Equity and Inclusion Policy

The Ramsey Conservation District is dedicated to encouraging a supportive, diverse and inclusive culture, with the overall mission of conserving and enhancing natural resources by supporting Ramsey County's residents and partnering organizations. Our aim is to ensure that diverse communities have access to, and are given equal opportunity in an equitable and inclusive manner that is representative of services the conservation district provides. Improving water quality measures amongst underrepresented communities, coupled with stakeholder input from culturally diverse groups, will expand our outreach and education efforts extensively.

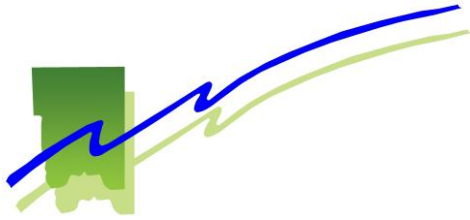
With regards to budgeted programs, The district will use portions of its funding mechanisms to ensure diversity efforts are concentrated in three areas. the concentrated areas of focus are, Hiring Practices, Contract Compliance, and Education and Outreach Programs.

i. Hiring Practices- The RCD in a collaborative effort with partnering organizations, will increase its recruitment efforts of people of color by actively posting employment opportunities with organizations who serve people of color and/or recruit people of color, from minority professional gatherings and hiring events. In order to carry out this initiative the district will collect data, and provide strategic outcomes with measurable results, to determine if benchmarks have been met successfully.

ii. Contract Compliance- The RCD is committed to ensuring the usage of minority owned vendors, consultants, and design firms in its day to day operations with partnering organizations and the public, in a concerted effort to carry out conservation/preservation programs. In keeping with federal affirmative action law requirements, the district board and staff will diversify its resources by seeking out the aforementioned consultants from diverse communities, and awarding project contracts. By doing so the district shows a "Good Faith Effort", in its retention of talented professionals.

iii. Education and Outreach Programs- Increasing racial diversity in delivering conservation preservation programs is a high priority for the district, and has to be broadened to include a wider range of people and the issues they are concerned with. Therefore, the RCD shall expand its buy in efforts from communities of color when attempting to provide environmental educational programming. The RCD will actively partner with environmental organizations of color, and share resources with said organizations providing volunteers, technical and organizational expertise. The RCD will also expand its outreach to schools in underrepresented communities, educating students about conservation and conservation practices. The district will also sponsor conservation forums in a collaborative effort with partnering organizations, at times when the general public is able to attend. This will include evening hours and be held in areas where public transportation is accessible.

The Ramsey Conservation District Racial Equity and Inclusion policy will be monitored, annually to ensure equity and diversity are continually promoted, and metrics have been met.



Meeting Date:06/01/2017

Prepared by: Ann WhiteEagle

K. Purpose/Action Requested:

Approval of staff submitting 2018-19 Budget Packet to the County.

Summary:

Attached are the budget documents prepared by staff for the 2018-19 budget. The documents identify the programs and activities, as well as the strategies for achieving goals. Since this is a budget year, there is more emphasis on the financial side, but in 2018 the focus will be on the goals and strategies.

Currently there are x's marked in the Performance Measure table where either staff is looking for board input, i.e. Volunteer Hours or for items where the final numbers need to be verified.

Department Summary



GOALS, STRATEGIES & PERFORMANCE MEASURES

RAMSEY CONSERVATION DISTRICT

GOAL

1. **Strengthen individual, family and community health, safety and well-being**
through effective safety-net services; innovative programming; prevention and early intervention; and environmental stewardship.

STRATEGY OR STRATEGIES TO MAKE PROGRESS TOWARDS THIS GOAL

- A. Promote cleaner water for the health of our communities
- B. Improve the natural resources for all people in Ramsey County
- C. Protect the quality of groundwater through targeted projects
- D. Monitor activities that will impact surface water quality
- E. Host events for sharing new conservation information, discussion and possible collaboration among organizations throughout Ramsey County that are working on water issues

PERFORMANCE MEASURES – ANALYSIS HIGHLIGHTS

The Conservation District works effectively with all landowners and federal, state and local government units to carry out conservation efforts throughout Ramsey County to further environmental stewardship. The requests for these programs and services have been steadily increasing in the past five years.

PERFORMANCE MEASURES – DATA

		2014	2015	2016	2017	2018-19
#	Performance Measures	Actual	Actual	Actual	Estimate	Estimate
AB C	MN Wetland Conservation Act (WCA) protection activities	50	65	61	65	120
C2	Assist citizens with cost share for sealing unused wells	52	86	11	50	100
D	Construction site erosion permit inspections for the cities of Arden Hills and Shoreview, also for the Rice Creek Watershed District	392	787	912	825	1600
D2	Bathymetric & Vegetative Lake Surveys	13	22	27	20	40
E	Annual State of the Waters Event and Tours	x	x	x	x	x

PERFORMANCE MEASURES – ADDITIONAL INFORMATION (if necessary)

Performance Measure ABC

One of the statutory obligations for SWCDs, including the RCD, is to serve on Technical Evaluation Panels (TEP) under WCA. These TEPs provide forums to discuss site-specific interpretation of law, rules, and technical data. Wetlands protect water quality, recharge groundwater, and provide critical habitat for wildlife. Over 80% of Ramsey County's pre-settlement wetlands have been destroyed. The increase in wetland protection activities in 2016 is a result of the significant increase in construction/redevelopment activities.

Department Summary



GOALS, STRATEGIES & PERFORMANCE MEASURES

RAMSEY CONSERVATION DISTRICT

Performance Measure C

Sealing abandoned/unused wells is foundational for groundwater protection. The RCD estimates that Ramsey County has over 13,000 abandoned/unused wells in the county. The current RCD goal is to seal approximately 50 wells per year. Priority is given to wells located in targeted wellhead protection areas and in drinking water supply areas. The RCD has sealed a total of 357 wells and the majority of the wells were located in Drinking Water Supply Management Areas. The RCD received two Clean Water Fund grants in 2017 for well sealing.

Performance Measure D

The RCD partners with the cities of Shoreview and Arden Hills to conduct inspections on active construction sites, to ensure compliance measures are being taken to prevent sediment from moving into surrounding water bodies. The RCD also conducts inspections for the Rice Creek Watershed District. The regulations are set forth in the municipalities' storm water pollution prevention plans and are enforced to ensure cleaner lakes, rivers, streams and wetlands. The number of inspections greatly increased in 2016 due to the continued increase in construction/redevelopment activities. This trend seems to be continuing into the current year.

Performance Measure D2

Lake surveys were completed on lakes and storm ponds in Ramsey County to better quantify the amount and type of aquatic vegetation in the lakes and estimate sediment loading in storm ponds. Sonar technology was used to determine the bottom contour of the lakes. These studies assist with long term planning and lake management. An upward trend is expected for this valuable service, as staffing levels will allow.

GOAL

2. **Cultivate economic prosperity and invest in neighborhoods with concentrated financial poverty** through proactive leadership and inclusive initiatives that engage all communities in decisions about our future.

STRATEGY OR STRATEGIES TO MAKE PROGRESS TOWARDS THIS GOAL

- A. Our partnerships with other organizations creates increased opportunities for all neighborhoods
- B. Continue to grow partnerships with local organizations that provide opportunities in targeted neighborhoods

PERFORMANCE MEASURES – ANALYSIS HIGHLIGHTS

The Conservation Design Program continues to be the most requested service for the RCD and includes site visits and raingarden/clean water designs to landowners interested in preventing flooding and erosion due to storm water runoff. This program is funded by the water management organizations in Ramsey County and this coordinated effort promotes the efficient use of resources. Since most of the land use in Ramsey County is residential, privately owned land, assisting with land management is a crucial niche for the RCD.

Department Summary



GOALS, STRATEGIES & PERFORMANCE MEASURES

RAMSEY CONSERVATION DISTRICT

PERFORMANCE MEASURES – DATA

		2014	2015	2016	2017	2018-19
#	Performance Measures	Actual	Actual	Actual	Estimate	Estimate
A	Site visits and clean water designs completed for water quality protection and erosion control practices	412	325	565	500	1000
B	Inspiring Communities Program designs	51	3	16	20	40

PERFORMANCE MEASURES – ADDITIONAL INFORMATION (if necessary)

Performance Measure A

There continues to be a waiting list for this service and even though 2015 shows a decrease in number, the projects have increased in size and scope, so that the number of hours spent in this program have increased, even though the number of site visits decreased.

Performance Measure B

Site visits and designs for the Inspiring Communities Program in Saint Paul have decreased. The program focus is on investing in neighborhoods most impacted by foreclosure and vacant properties – with the rehabilitation of vacant properties as an opportunity for neighborhood transformation. The number of designs for this program will vary based on the number of foreclosed and vacant properties.

GOAL

3. Enhance access to opportunity and mobility for all residents and businesses

through connections to education, employment and economic development throughout our region.

STRATEGY OR STRATEGIES TO MAKE PROGRESS TOWARDS THIS GOAL

- A. Target environmental education and outreach efforts with ways to connect people with opportunities for conservation
- B. Offer internships for students to access natural resource field experience
- C. Leveraging involvement with other Soil and Water Conservation Districts (SWCD) to advance efforts in our community and the region as a whole

PERFORMANCE MEASURES – ANALYSIS HIGHLIGHTS

Environmental education and outreach efforts are a critical component in our conservation efforts. The RCD annually hosts a number of events, as well as assists with events and workshops given by other water management organizations. Events such as the Lake Phalen Waterfest, and the Children's Waterfest are examples of successful outreach efforts, which connect multi-generational and multi-cultural groups to opportunities for conservation. The annual State of the Waters event has been a popular meeting to discuss and highlight various topics from water supply to surface water management.

PERFORMANCE MEASURES – DATA

		2014	2015	2016	2017	2018-19
#	Performance Measures	Actual	Actual	Actual	Estimate	Estimate
A	Workshops and participation in environmental educational events	18	12	21	20	30
B	Host site for Conservation Corp	Yes	Yes	Yes	Yes	Yes

Department Summary



GOALS, STRATEGIES & PERFORMANCE MEASURES

RAMSEY CONSERVATION DISTRICT

A2	Volunteer hours		1560	x	1,600	3,200
C	Board and staff hours spent on regional planning efforts		140	x	150	300
A3	Number of volunteer rain gaugers	64	64	64	64	128

PERFORMANCE MEASURES – ADDITIONAL INFORMATION (if necessary)

No additional detail about the data is required.

GOAL

4. **Model forward-thinking investment, fiscal accountability and transparency** through professional operational and financial management.

STRATEGY OR STRATEGIES TO MAKE PROGRESS TOWARDS THIS GOAL

- A. Maximize services provided while remaining within the budget
- B. Target grant writing efforts with prioritized projects
- C. Maintain a fund balance equal to or greater than 25% of the current budget

PERFORMANCE MEASURES – ANALYSIS HIGHLIGHTS

In the last five consecutive years, the RCD has continued to increase the fund balance, demonstrating financial and operational excellence. The RCD has supplemented the budget with successful grant applications, specifically grants resulting from the 2008 Clean Water, Land and Legacy Amendment.

PERFORMANCE MEASURES – DATA

#	Performance Measures	2014	2015	2016	2017	2018-19
		Actual	Actual	Actual	Estimate	Estimate
B1	State grant funding provided to landowners through the RCD for conservation practices	\$152,046	\$131,274	\$286,167	\$1million	\$150,000
B2	State grant funding awarded to the RCD	\$371,500	\$365,357	\$169,277	\$x	\$350,000
C	Fund Balance	\$217,804	\$287,514	\$364,498	\$380,000	\$760,000
A	Return on taxpayer investment, per \$1 investment	\$11	\$11	\$x	\$x	\$x

PERFORMANCE MEASURES – ADDITIONAL INFORMATION (if necessary)

Performance Measure B1

The RCD currently offers cost share to landowners for well sealing and for the design and installation of water quality projects, such as raingardens. This number went down in 2015 due to the RCD expending all of the well sealing grant funding. We hope to have additional funding to offer landowners in 2017.

Performance Measure C

After nearly depleting the fund balance in 2010, since 2011, the RCD fund balance has increased to achieve the RCD Board goal of maintaining a minimum fund balance of 25% of the budget. The RCD is currently exceeding this goal.

Performance Measure A

For every dollar that the RCD received in tax levy in 2016 from Ramsey County, the RCD returned \$x on the investment in natural resource projects. The RCD leveraged a total of \$x as the match for grant funding in 2016.

Department Summary



GOALS, STRATEGIES & PERFORMANCE MEASURES

RAMSEY CONSERVATION DISTRICT

This number should significantly increase in 2017 due to a large grant awarded for the Lilydale Restoration Project. The RCD currently has \$x available in the project/grant budget.

Department Summary



Ann WhiteEagle, District Manager 1425 Paul Kirkwold Drive

(651) 266-7270

RAMSEY CONSERVATION DISTRICT

VISION

A vibrant community where all are valued and thrive.

MISSION

A county of excellence working with you to enhance our quality of life.

DEPARTMENT OVERVIEW

The Ramsey Conservation District (RCD) is one of eighty-nine Soil and Water Conservation Districts (SWCDs) in Minnesota. SWCDs are special purpose local units of state government established to manage and direct natural resource programs at the local level. The RCD has an elected board of Supervisors, who provide governance to the organization.

The RCD provides programs and services, whose focus is to promote long-term sustainability of Ramsey County's natural resources, including and especially our rich reserves of groundwater and our lakes, rivers, and wetlands.

We are committed to being fiscally responsible with the funds entrusted to us and to pursue grant funding to maximize resources and promote intergovernmental cooperative efforts for increased cost-efficiency.

PROGRAMS / SERVICES

Groundwater Protection – Through a grant from the Clean Water Fund, the RCD provides cost share assistance to Ramsey County landowners to seal unused wells. Priority is given to wells located in drinking water supply and wellhead protection areas. This effort is foundational for groundwater and drinking water protection. The RCD received two additional Clean Water Fund grants in 2017 to resume efforts in targeted areas.

Conservation Design Assistance – This is a program to improve the natural resources in Ramsey County with projects that include raingardens, shoreline restorations, and native plantings. With funding from Water Management Organizations, the RCD provides free technical assistance to landowners for site visits to recommend storm water management practices, as well as landscape design assistance for projects. Additional funding from Clean Water Legacy grants, as well as cost share from water management organizations is available to landowners to install the projects.

Erosion Control Program – The RCD assists the cities of Arden Hills and Shoreview, as well as the Rice Creek Watershed District with inspections of construction sites to insure storm water control to prevent sediments and other pollutants from ending up in rivers, streams, lakes, and wetlands.

Environmental GIS Program – This program assists surrounding local government units with the mapping of water quality data, including bathymetric and vegetation surveys of Ramsey County lakes and storm water ponds.

Wetland Conservation Act Administration – The Wetland Conservation Act (WCA) was passed in 1991, with the ultimate goal of “no net loss of wetlands”. The RCD serves on technical evaluation panels to ensure WCA compliance. This service provides protection of wetland sites within Ramsey County and is funded in part through grants from the Board of Soil and Water Resources.

Ob-Well Monitoring – In partnership with the Department of Natural Resources (DNR), the RCD monitors 18 observation wells in Ramsey County for groundwater levels. The DNR uses this data for an ongoing study.

Department Summary

Ann WhiteEagle, District Manager 1425 Paul Kirkwold Drive

Subwatershed Retrofit Analysis Services – With a grant from the Clean Water Fund and matching funding from local government units, the RCD is completing a number of comprehensive watershed retrofit analysis studies to identify optimal sites for the installation of water quality improvement projects.

Education & Outreach – RCD staff and Board participate regularly in events, such as the Blue Thumb Landscape Restoration Fair, the Ramsey-Washington Metro Watershed District Waterfest and the Children's Waterfest to promote conservation practices. Since 2013 the RCD has hosted an annual State of the Waters event to discuss various topics from water supply to surface water management. In 2016 the RCD began a Conservation Forum to highlight local efforts in conservation. Also, the RCD maintains both Facebook and Twitter accounts to educate the public and give event updates.

Rain Gauge Network – There are over 60 volunteers collecting precipitation levels in Ramsey County, which is nearly twice as many rain gauge volunteers than any other county in the state. The RCD staff enters precipitation levels collected by the rain gauge volunteers and reports this information to the State Climatology Office.

Invasive Weed Management – The RCD is one of 10 partners with the Ramsey County Cooperative Weed Management Area to control invasive plants that negatively impact natural lands, parks, and open spaces. The RCD is also assisting with the efforts to improve and restore lakes that have been infested by invasive aquatic species, such as Eurasian watermilfoil, curly-leaf pondweed, and zebra mussels. In 2015 the RCD staff completed boat launch inspections in an effort to prevent the spread of aquatic invasive species through boater education and watercraft inspections. In 2016, RCD staff logged 348 hours of inspections, with a planned increase to 2,142 hours in 2017.

GOALS & STRATEGIES

Strengthen individual, family and community health, safety and well-being.

- Promote cleaner water for the health of our communities
- Improve the natural resources for all people in Ramsey County
- Protect the quality of groundwater through targeted projects
- Monitor activities that will impact surface water quality
- Host events for sharing new conservation information, discussion and possible collaboration among organizations throughout Ramsey County that are working on water issues

Cultivate economic prosperity and invest in neighborhoods with concentrated financial poverty.

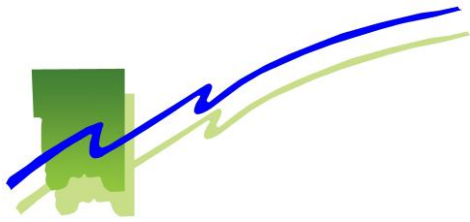
- Our partnerships with other organizations creates increased opportunities for all neighborhoods
- Continue to grow partnerships with local organizations that provide opportunities in targeted neighborhoods

Enhance access to opportunity and mobility for all residents and businesses.

- Target environmental education and outreach efforts with ways to connect people with opportunities for conservation
- Offer internships for students to access natural resource field experience

Model forward-thinking investment, fiscal accountability and transparency.

- Maximize services provided while remaining within the budget
- Target grant writing efforts with prioritized projects
- Maintain a fund balance equal to or greater than 25% of the current budget



Meeting Date:06/01/2017

Grants: C17-5165 and C17-1480
(Well-Sealing)

Prepared by: Andrea Prichard

Contract Numbers: WS1480 1-19
and WS5165 1-11

L1. Purpose/Action Requested:

Approve the encumbrance of well sealing cost-share CWF grant funds for 15 landowners who were issued program approval letters by RCD staff April 24th – May 1st.

Remaining C17-1480 funds: \$20,000

Summary:

RCD was awarded two FY-17 Clean Water Fund grants (\$20,000 and \$108,000) to help landowners pay for well sealing on their property with the objective of protecting groundwater resources against possible contamination through unsealed abandoned wells. The execution date for both grants was in April 2017, at which point waitlisted landowners were invited to apply for the program.

For the 2011 and 2014 well-sealing grants, staff had been delegated authority to approve well-sealing applications, while the Board approved each reimbursement. Without realizing that Board approval is now recommended by BWSR for well-sealing applications, RCD staff sent approval letters to the first 15 applicants who were on the waiting list and in targeted vulnerable water areas (13) or had waited longer than a year (2). Per BWSR guidance for this situation, after-the-fact Board approval is now requested for the encumbrance of funds for those 15 applicants who were issued approval letters in the April 24th - May 1st time period before RCD staff ceased the issuance of approval letters.

Explanation of Fiscal/FTE Impact:

Clean Water Fund 2017 grant C17-1480 will be used to pay landowners for the partial reimbursement of the sealing of 25-35 wells. Reimbursement will only go to those landowners who submit complete documentation showing the sealing of their well with a licensed contractor.

Contract Number	Owner	Address	Maximum Reimbursement
WS1480-1	Lynn Anderson	3764 Kenny Lane, White Bear Lake 55110	\$ 750.00
WS1480-2	Bonnie Boeck	842 Lovell Ave, Roseville, MN 55113	\$ 750.00
WS1480-3	Sherri Boyer	345 Second Ave SE, New Brighton, MN 55112	\$ 750.00
WS1480-4	Nancy DeMarre	3029 Rice St, Roseville, MN 55113	\$ 750.00
WS1480-5	Edward John Dobbs	22 McClelland St N, St Paul, MN 55119	\$ 750.00
WS1480-6	Jerry Ellefson	1918 Grant Rd, Arden Hills 55112	\$ 750.00
WS1480-7	Judith Hensley	4047 Elmwood St, Vadnais Heights 55127	\$ 750.00
WS1480-8	Marilyn Hrabik	2091 Radatz Ave, Maplewood 55109	\$ 750.00
WS1480-9	Brent Mason	223 Hawes Ave, Shoreview 55126	\$ 750.00
WS1480-10	William Meyer	2155 Larpenteur Ave E, Maplewood 55109	\$ 750.00
WS1480-11	Michelle Persuitti	3150 Shorewood Drive, Arden Hills, MN 55112	\$ 750.00
WS1480-12	Bruce Reichenbach	425 Maple Lane, Shoreview, MN 55126	\$ 750.00
WS1480-13	Emmy Reppe	2912 Matilda St Roseville, MN 55113	\$ 750.00
WS1480-14	Caroline Rusten-O'Hagan	3400 White Bear Ave, White Bear Lake, MN 55110	\$ 750.00
WS1480-15	Mary Tuerk	3710 Centerville Rd. Vadnais, Heights 55127	\$ 750.00

L2. Purpose/Action Requested:

Approve the encumbrance of well sealing cost-share CWF funds for the applicants listed below.
Remaining C17-1480 funds: \$20,000 (\$8,750 if the 1st 15 applicants use the full \$750 each)

Summary:

The following waitlisted applicants submitted completed applications in May 2017 and are being considered for the WS1480 grant, which targets mostly DWSMA or other vulnerable areas, as well as the waitlisters who have been waiting for over a year.

A completed application consists of the signed agreement form and two bids from licensed contractors. RCD staff have checked the attached application materials for accuracy and compliance with terms. Each of the listed applicants is from the October 2015-April 2017 waiting list. Pending Board approval, Ramsey Conservation District will send approval letters to applicants. Reimbursement for approved applicants will be possible after wells are sealed and receipts and records are presented to the Board for approval.

Explanation of Fiscal/FTE Impact:

Clean Water Fund 2017 grant C17-1480 will be used to pay landowners for partial reimbursement of approximately 25-35 wells sealed.

Contract Number	Owner	Address	Maximum Reimbursement
WS1480-16	Harold Feickert	2590 North Jackson St, Little Canada 55117	\$ 750.00
WS1480-17	Tim Letourneau	1918 Cedar Ave, White Bear Lake 55110	\$ 750.00
WS1480-18	Dan & Robin Marchetti	1433 Rambler Rd, Roseville, MN 55113	\$ 750.00
WS1480-19	Dennis Peterson	1818 Ide St, 1894 Ide St, Maplewood 55109	\$ 750.00

Supporting Documents:
Landowner Application packets

L3. Purpose/Action Requested:

Approve the encumbrance of well sealing cost-share CWF funds for the applicants listed below.
Remaining C17-5165 funds: \$108,000 (\$90,000 allocated for well-sealing reimbursement)

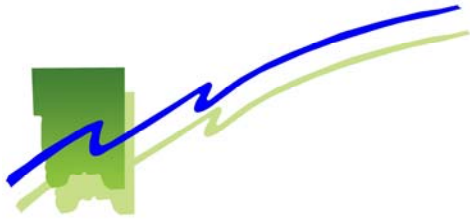
Summary:

The following waitlisted applicants submitted completed applications in May 2017 and are being considered for the WS5165 grant, which is intended for second-priority waitlisted applicants (those who waited less time and/or are not in targeted vulnerable groundwater areas) as well as first-priority new applicants (non-waitlisted applicants whose well is located in a vulnerable groundwater area). If funds remain after a year, lower-priority applicants will be considered for participation in the cost-share.

Explanation of Fiscal/FTE Impact:

Clean Water Fund 2017 grant C17-5165 will be used to pay for program-related staff time and partial reimbursement of landowners for the sealing of 100-150 wells.

Contract Number	Owner	Address	Maximum Reimbursement
WS5165-1	Nicole Evanson	3191 Lake Johanna Blvd, Arden Hills, MN 55112	\$ 750.00
WS5165-2	Steve Loveless	1683 Lois Drive, Shoreview, MN 55126	\$ 750.00
WS5165-3	Wayne Lund	1720 Rosewood Ave S, Maplewood, MN 55109	\$ 750.00
WS5165-4	Kelly Mample	1755 county rd h2, Mounds View, MN 55112	\$ 750.00
WS5165-5	Walter/Tammy McLaurin	214 Ferndale St N, Maplewood MN 55119	\$ 750.00
WS5165-6	Don McLean	2559 Germain St, Maplewood, MN 55109	\$ 750.00
WS5165-7	Germaine Nash	20 Coutny Rd C East, Little Canada, MN 55117	\$ 750.00
WS5165-8	Mary Spear	2540 Clarence St, Maplewood, MN 55109	\$ 750.00
WS5165-9	Craig Schaufert	20 Mid Oaks Lane, Roseville, MN 55113	\$ 750.00
WS5165-10	Earl Young	1707 Rosewood Ave North, Maplewood, MN 55109	\$ 750.00
WS5165-11	Jeanne Young	4212 Mcmenemy St, Vadnais Heights, MN 55127	\$ 750.00



Meeting Date: 06/01/2017

Prepared by: Michelle Prosser

M1. Purpose/Action Requested:

Approve a contract for terrestrial invasive plant control at numerous sites within the Ramsey County Cooperative Weed Management Area (CWMA).

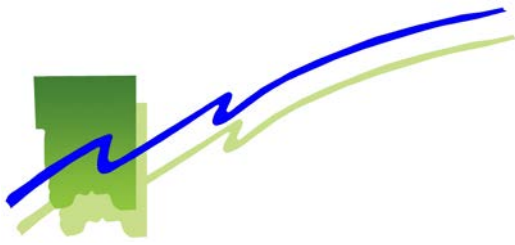
Summary:

The request for an informal quote (RFIQ) for this project is attached. This project proposes specific control of targeted terrestrial invasive species at eight individual sites within Ramsey County. The total area of treatment would be approximately 46 acres. The timeline for the request indicates the submittal deadline for a quote is 12:00 p.m., Wednesday, May 31, 2017. Staff recommendation of consultant to contract with will be presented during the June 1, 2017 RCD Board meeting. Work on this project is expected to occur between June 5, 2017 and July 14, 2017 with work completed by August 1, 2017. This timeline follows best management practices based on plant phenology.

Explanation of Fiscal/FTE Impact:

Funds for this program are available through the 2016 CWMA grant.

Ramsey Conservation District



1425 Paul Kirkwold Drive
Highway 96 & Hamline Avenue
Arden Hills, MN 55112
Telephone 651-266-7270
Fax 651-266-7276

REQUEST FOR QUOTE

TO: Minnesota Native Landscapes, Inc.
Prairie Restorations, Inc.
Stantec Consulting Services

FROM: Alicia Little, Conservation Technician, Ramsey Conservation District (RCD)
Michelle Prosser, Conservation Technician, Ramsey Conservation District (RCD)

DATE: May 17, 2017

SUBJECT: Maplewood Nature Center (Maplewood)
C2 & Lexington (Roseville)
Applewood Preserve (Maplewood)
Matoska Park (White Bear Lake)
Tax Exempt Parcel (Roseville)
Jim's Prairie Preserve (Maplewood)
North Haven Church Baseball Field (North St. Paul)
Fish Creek (Ramsey Parks & Maplewood)

CC: Carole Gernes, Ramsey County Cooperative Weed Management Area (RCCWMA)
Mike Goodnature, Ramsey County Parks & Recreation

ATTACHED: Table A – Targeted Invasive Plant Control Species and Locations
Exhibit A – Maplewood Nature Center Area Map
Exhibit B – C2 & Lexington Area Map
Exhibit C-1 – Applewood Preserve Overview Map
Exhibit C-2 – Applewood Preserve Areas 1, 2, 7 Map
Exhibit C-3 – Applewood Preserve Areas 3, 4, 5 Map
Exhibit C-4 – Applewood Preserve Area 6 Map
Exhibit D – Matoska Park Area Map
Exhibit E – Tax Exempt Parcel Area Map
Exhibit F – Jim's Prairie Preserve Map
Exhibit G – North Haven Church Baseball Field Map
Exhibit H – Fish Creek Area Map

**Bid Package
for
Ramsey County CWMA
Invasive Plant Control**

Project Locations:

Maplewood Nature Center, Maplewood
County Road C2 & Lexington Ave, Roseville
Applewood Preserve, Maplewood
Matoska Park, White Bear Lake
Tax Exempt Parcel, Roseville
Jim's Prairie Preserve, Maplewood
North Haven Church Baseball Field, North St. Paul
Fish Creek, Maplewood

May 17, 2017

Prepared By:



Project Overview

The Ramsey Conservation District (RCD) invites you to consider submitting a quotation for the Ramsey County CWMA Invasive Plant Control Project. This letter is intended to provide you with background information about the project, the anticipated scope of work, and deliverables. If you decide to submit a quotation, the submittal deadline is **12:00pm, Wednesday, May 31, 2017**.

A. Project Name: Ramsey County CWMA Invasive Plant Control Project

B. Purpose:

Ramsey County is seeking a qualified contractor to provide comprehensive invasive species control services for priority invasive plant species (see **Table A**) at numerous sites within Ramsey County. Invasive plant species are detrimental to native ecosystems. These plants outcompete native plants for limited resources such as soil nutrients and sunlight, leading to the decline of native plants and negatively impacting the entire ecosystem. This project will control the populations of these invasive species, thus giving native plants a chance to reestablish populations in these greenspaces.

C. Scope of Work - General Parameters:

1. Become familiar with project area and subject properties where work will occur.
2. Work with RCD/RCCWMA staff to schedule effective control treatments of invasive plant populations based on plant phenology or other factors and secure any necessary permits as required by law.
3. Safely implement effective control treatments of targeted invasive plant species based on established 'best management practices' for each species while following applicable laws and regulations.
4. Perform any necessary follow up treatments or monitoring as needed.

D. Specific Project Features (estimated):

The selected contractor will be responsible for locating utilities within the project area prior to beginning plant control measures. The contractor will be responsible for obtaining any required permits or licenses associated with this project, including permitting with Ramsey County, DNR, and cities that own properties included in the project areas. The contractor must follow best management practices regarding use of herbicides. When required, contractor must provide informational signage at herbicide application area. The contractor is responsible for re-treatment if rain occurs within six (6) hours of a foliar treatment. Excessive overspray or non-target damage may be grounds to cancel contract. An appropriate marking dye shall be used with the herbicide.

E. Anticipated Project Timeline (*subject to change*):

Quotation packages due to RCD May 31, 2017 (12:00 p.m.)

Contractor selection June 1, 2017

Notice to Proceed June 2, 2017

Majority of invasive plant control to occur between these dates: 6/5/2017 and 7/14/2017

Work complete by August 1, 2017.

F. Payment:

Payment must be coordinated with the Ramsey Conservation District.

G. Deliverables:

10 separate sites will have invasive plant control completed to the satisfaction of the Ramsey Conservation District.

H. Qualifications & References:

Proposals must include the following items and information:

- Proposals must be placed in a sealed envelope marked "RAMSEY COUNTY CWMA INVASIVE PLANT CONTROL" and addressed to Michelle Prosser, Ramsey Conservation District, 1425 Paul Kirkwold Dr. Arden Hills, MN 55112.
- Completed bid template (must use form provided)
- Certificate of Liability Insurance- The successful Vendor shall show proof of insurance coverage and amount. Minimum insurance required general and automobile liability, is \$1,000,000.00. Evidence of Workers' Compensation coverage is also required from the successful Vendor. The cost will be paid by the Vendor.
- Names of any subcontractors to be utilized for portions of the project

I. Change Orders

The RCD may issue change orders to the Contractor for changes in the materials, scope or specifications of the project. Each change order, including any changes to contractor fees, must be executed by the RCD and the Contractor.

J. Underground Utilities

Utilities must be marked and not disturbed during the completion of the Project. The cost of all of the following will be included in the Contractor's Quote, and Contractor shall have full responsibility for:

- a. Researching and checking information on locations of utilities in the project areas;
- b. Locating all underground facilities;
- c. Coordination of the Project with the owners of such underground facilities;
- d. The safety and protection of all such underground facilities and repairing any damage thereto resulting from the Project

If an underground facility is uncovered or revealed at or contiguous to the project sites which was not indicated in the utility research, or not indicated with reasonable accuracy, the Contractor shall, promptly after becoming aware thereof and before further disturbing conditions affected thereby or performing any Work in connection therewith (except in an emergency), identify the owner of such underground facility and give written notice to that owner and to the RCD and ensure the safety and protection of such an underground facility. If the RCD concludes that a change to the Contract is required, a Change Order will be issued to reflect and document such consequences. An equitable adjustment shall be made in the Contract Price or Contract Times, or both, to the extent that they are attributable to the existence or location of any Underground Facility that was not indicated or not indicated with reasonable accuracy and that Contractor did not know of and could not reasonably have been expected to be aware of or to have anticipated.

K. Drug and Alcohol Free Workplace

The Contractor hereby certifies, under penalty of perjury, under the laws of the State of Minnesota that under the contract he will comply with the requirements of the Drug-Free Workplace Act of 1988 (Government Code Section 8350 et. seq.). Therefore, the work site shall be kept drug and alcohol free at all times.

L. Evaluation of Proposals:

Evaluation of project proposal will be a qualitative review conducted by Ramsey Conservation District with emphasis on price, and qualifications.

M. Proposal Due Date:

Any questions regarding this request for proposal and qualifications should be directed to the contact below. Proposals must be submitted to the Ramsey Conservation District Office by 12:00 p.m. on May 31, 2017.

Via mail or in person:

Michelle Prosser
Ramsey Conservation District
1425 Paul Kirkwold Drive
Arden Hills, MN 55112
michelle.prosser@co.ramsey.mn.us

Attached: **Table A** – Targeted Invasive Plant Control Species and Locations, **Exhibit A** – Maplewood Nature Center Area Map, **Exhibit B** – C2 & Lexington Area Map, **Exhibit C-1** – Applewood Preserve Overview Map, **Exhibit C-2** – Applewood Preserve Areas 1, 2, 7 Map, **Exhibit C-3** – Applewood Preserve Areas 3, 4, 5 Map, **Exhibit C-4** – Applewood Preserve Area 6 Map, **Exhibit D** – Matoska Park Area Map, **Exhibit E** – Tax Exempt Parcel Area Map, **Exhibit F** – Jim’s Prairie Preserve Map, **Exhibit G** – North Haven Church Baseball Field Map, **Exhibit H** – Fish Creek Area Map

EXHIBIT A
Quotation Summary Invasive Plant Control

Total Quote (Control of Targeted Invasive Plant Species) \$: _____

Total Quote (Control of Targeted Invasive Plant Species) in Words: _____

Company Name: _____

Signature: _____

Name Printed: _____

Phone Number: _____

Email Address: _____

Date: _____

Ramsey County CWMA Invasive Plant Control - Table A

Infestation	Area	Species	Common Name	Location	EDDMapS #	Coordinates	Acres	Map
1		Celastrus orbiculatus	Oriental bittersweet	Maplewood Nature Center	1975371	44.969,-92.9935	1.85	Exhibit A
2		Dipsacus laciniatus	Cut-leaved teasel	C2 and Lexington Roseville	1660082	45.0271,-93.1469	2.08	Exhibit B
3		Pastinaca sativa	Wild Parsnip	Applewood Preserve; Maplewood			1.45 total	Exhibit C-1
	1				1969400	44.9175,-92.9944	0.117	Exhibit C-2
	2				3230283	44.9181,-92.9899	0.26	"
	3				1969405	44.9162,-92.9945	0.131	Exhibit C-3
	"				3909472	44.916,-92.9944	"	"
	4				2409980	44.9161,-92.9937	0.053	"
	5				4888849	44.9159,-92.9935	0.107	"
	6				2409989	44.9181,-92.9899	0.744	Exhibit C-4
	"				1969411	44.9182,-92.9898	"	"
	7				4888848	44.9169,-92.9941	0.035	Exhibit C-2
4		Polygonum cuspidatum/ Reynoutria japonica	Japanese knotweed	Matoska Park, White Bear Lake	4259653	45.0844,-93.0032	0.34	Exhibit D
5		Polygonum cuspidatum/ Reynoutria japonica	Japanese knotweed	Tax Exempt Parcel; Roseville, MN	3911165	45.0054,-93.1361	1.66	Exhibit E
6	1	Tanacetum vulgare	Common Tansy	Jim's Prairie Preserve, Maplewood	3045304	44.9837,-92.9949	2.76	Exhibit F
	2				3045303	44.9841,-92.9926		"
	3				1969397	44.9835,-92.9934		"

Infestation	Area	Species	Common Name	Location	EDDMapS #	Coordinates	Acres	Map
7		Tanacetum vulgare	Common Tansy	North Haven Church Baseball field, North St. Paul	4107233	45.0174,-93.0068	0.63	Exhibit G
8	1	Torilis japonica	Japanese hedge parsley	Fish Creek; Ramsey County Parks and Maplewood	1666281	44.8971,-92.9997	34.0	Exhibit H
	2				4176725	44.8994,-93.0049		“
	3				4176724	44.8991,-93.005		“
	4				4176722	44.8984,-93.0052		“
	5				4176720	44.8976,-93.0043		“
	6				4176680	44.8984,-93.0058		“



Celastrus orbiculatus; Maplewood Nature Center



NAD_1983_HARN_Adj_MN_Ramsey_Feet
© Ramsey County Enterprise GIS Division

This map is a user generated static output from an Internet mapping site and is for reference only. Data layers that appear on this map may or may not be accurate, current, or otherwise reliable.
THIS MAP IS NOT TO BE USED FOR NAVIGATION

Legend



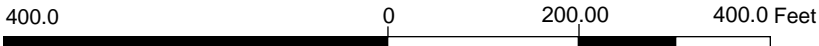
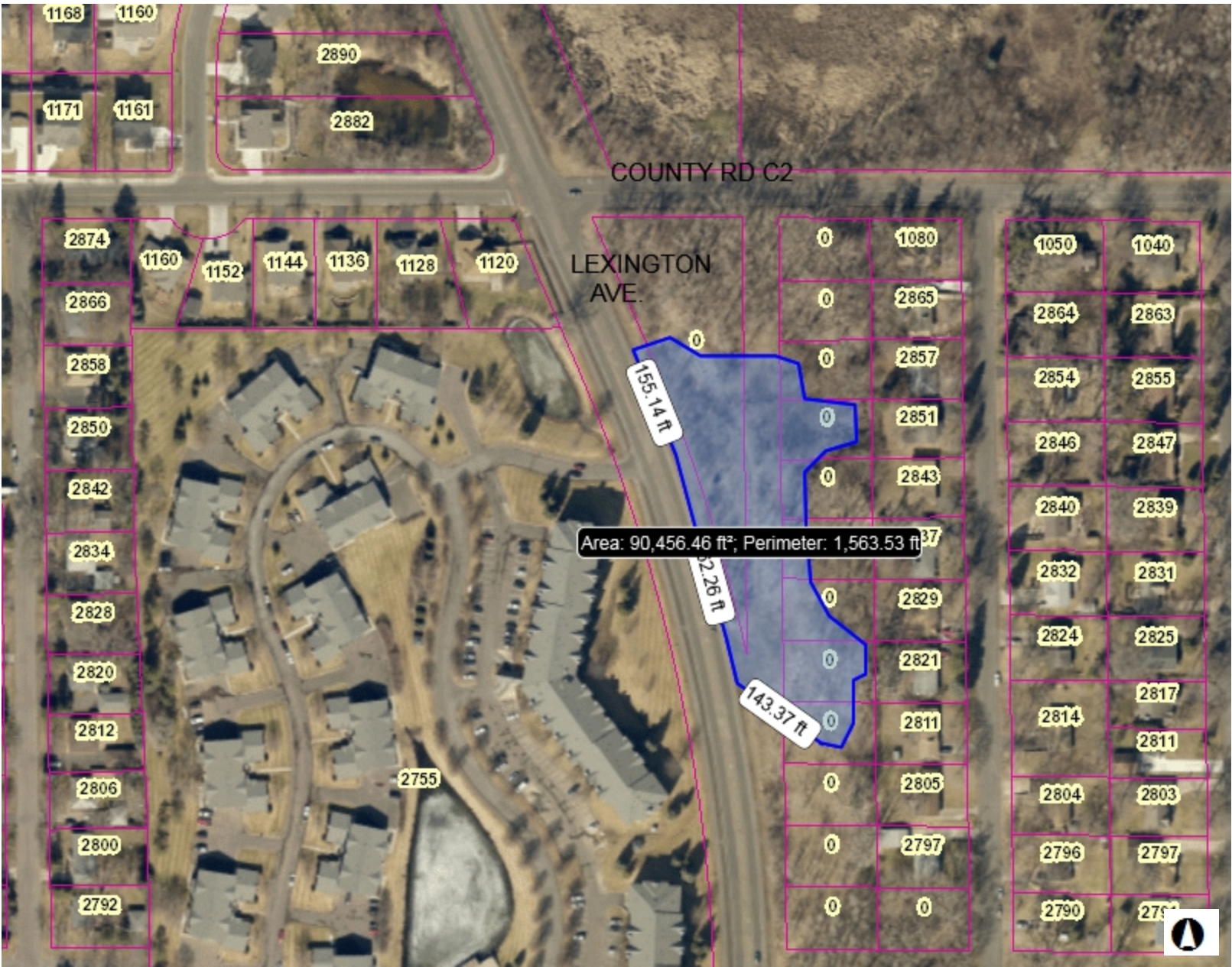
- City Halls
- Schools
- Hospitals
- Fire Stations
- Police Stations
- Recreational Centers
- Parcel Points
- Parcel Boundaries

Notes

Oriental Bittersweet; 1.85 acrea



2. CUT LEAVED TEASEL; ROSEVILLE



NAD_1983_HARN_Adj_MN_Ramsey_Feet
© Ramsey County Enterprise GIS Division

This map is a user generated static output from an Internet mapping site and is for reference only. Data layers that appear on this map may or may not be accurate, current, or otherwise reliable.
THIS MAP IS NOT TO BE USED FOR NAVIGATION

Legend



- City Halls
- Schools
- Hospitals
- Fire Stations
- Police Stations
- Recreational Centers
- Parcel Points
- Parcel Boundaries

Notes

Approximately 2.08 acres; scattered plants.



3. PASTINACA SATIVA; MAPLEWOOD: OVERVIEW



Legend



- City Halls
- Schools
- Hospitals
- Fire Stations
- Police Stations
- Recreational Centers
- Parcel Points
- Parcel Boundaries

Notes

Approximately 1.45 total acres;
scattered plants.

600.0 0 300.00 600.0 Feet

NAD_1983_HARN_Adj_MN_Ramsey_Feet
© Ramsey County Enterprise GIS Division

This map is a user generated static output from an Internet mapping site and is for reference only. Data layers that appear on this map may or may not be accurate, current, or otherwise reliable.

THIS MAP IS NOT TO BE USED FOR NAVIGATION



3. PASTINACA SATIVA; APPLEWOOD: Area 1, 2 & 7



Legend



- City Halls
- Schools
- Hospitals
- Fire Stations
- Police Stations
- Recreational Centers
- Parcel Points
- Parcel Boundaries

Notes

Area 1 ~ 0.12 Acre; 2 ~ 0.26 Acre; 7 ~ 0.04 Acre.

200.0 0 100.00 200.0 Feet

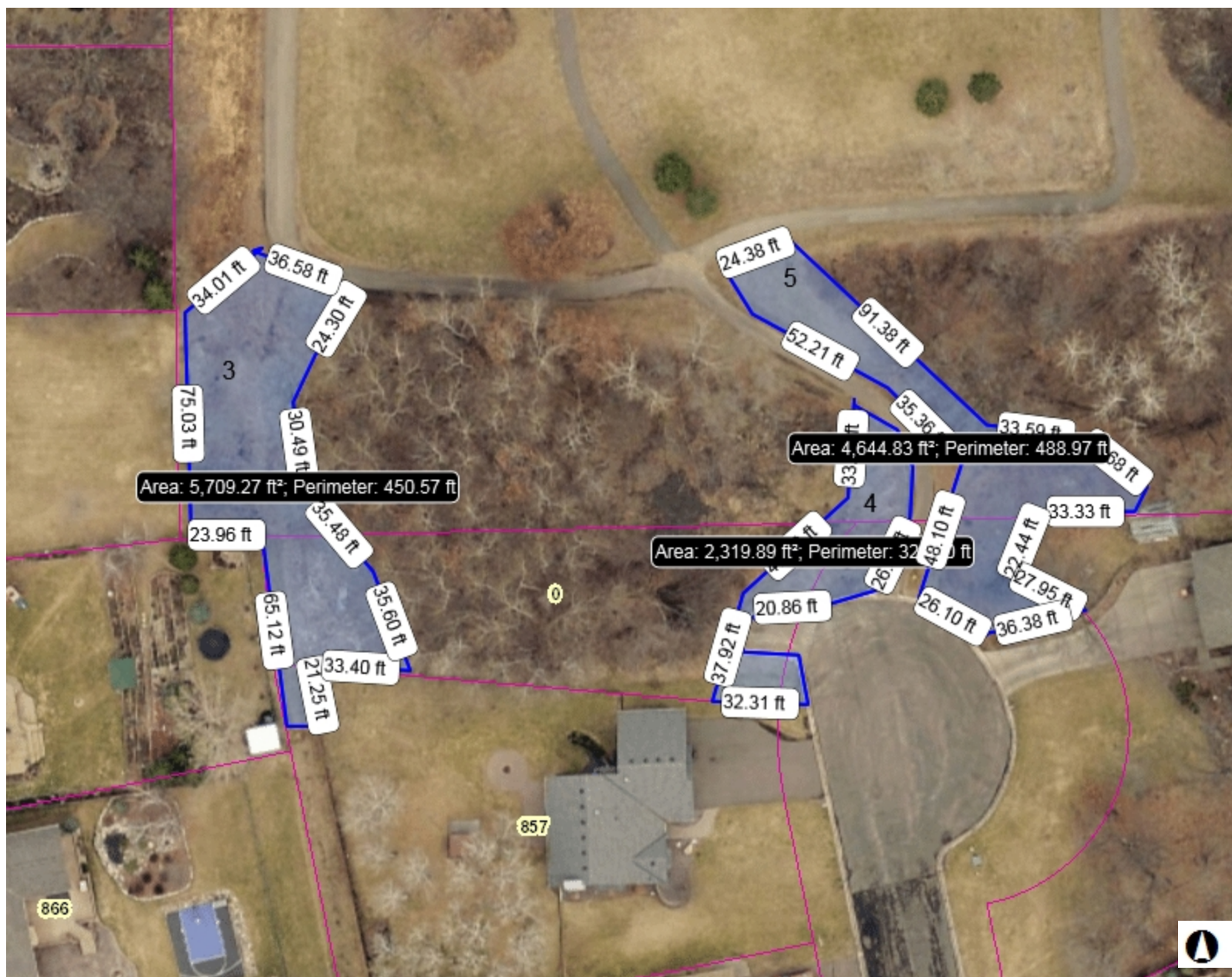
NAD_1983_HARN_Adj_MN_Ramsey_Feet
© Ramsey County Enterprise GIS Division

This map is a user generated static output from an Internet mapping site and is for reference only. Data layers that appear on this map may or may not be accurate, current, or otherwise reliable.

THIS MAP IS NOT TO BE USED FOR NAVIGATION



3. PASTINACA SATIVA; APPLEWOOD: Area 3, 4 & 5



Legend



- City Halls
- Schools
- Hospitals
- Fire Stations
- Police Stations
- Recreational Centers
- Parcel Points
- Parcel Boundaries



Notes

Area 3 ~ 0.13 Acre; 4 ~ 0.05 Acre; 5 ~ 0.11 Acre.

100.0 0 50.00 100.0 Feet

NAD_1983_HARN_Adj_MN_Ramsey_Feet
© Ramsey County Enterprise GIS Division

This map is a user generated static output from an Internet mapping site and is for reference only. Data layers that appear on this map may or may not be accurate, current, or otherwise reliable.

THIS MAP IS NOT TO BE USED FOR NAVIGATION



3. PASTINACA SATIVA; APPLEWOOD: Area 6



Legend



- City Halls
- Schools
- Hospitals
- Fire Stations
- Police Stations
- Recreational Centers
- Parcel Points
- Parcel Boundaries

200.0 0 100.00 200.0 Feet

NAD_1983_HARN_Adj_MN_Ramsey_Feet
© Ramsey County Enterprise GIS Division

This map is a user generated static output from an Internet mapping site and is for reference only. Data layers that appear on this map may or may not be accurate, current, or otherwise reliable.

THIS MAP IS NOT TO BE USED FOR NAVIGATION

Notes

Area 6 ~ 0.74 Acre; scattered plants



4. Reynoutria japonica; White Bear Lake MN



Legend



- City Halls
- Schools
- Hospitals
- Fire Stations
- Police Stations
- Recreational Centers
- Parcel Points
- Parcel Boundaries
- Airports

Notes

~0.34 Acre

200.0 0 100.00 200.0 Feet

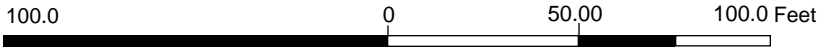
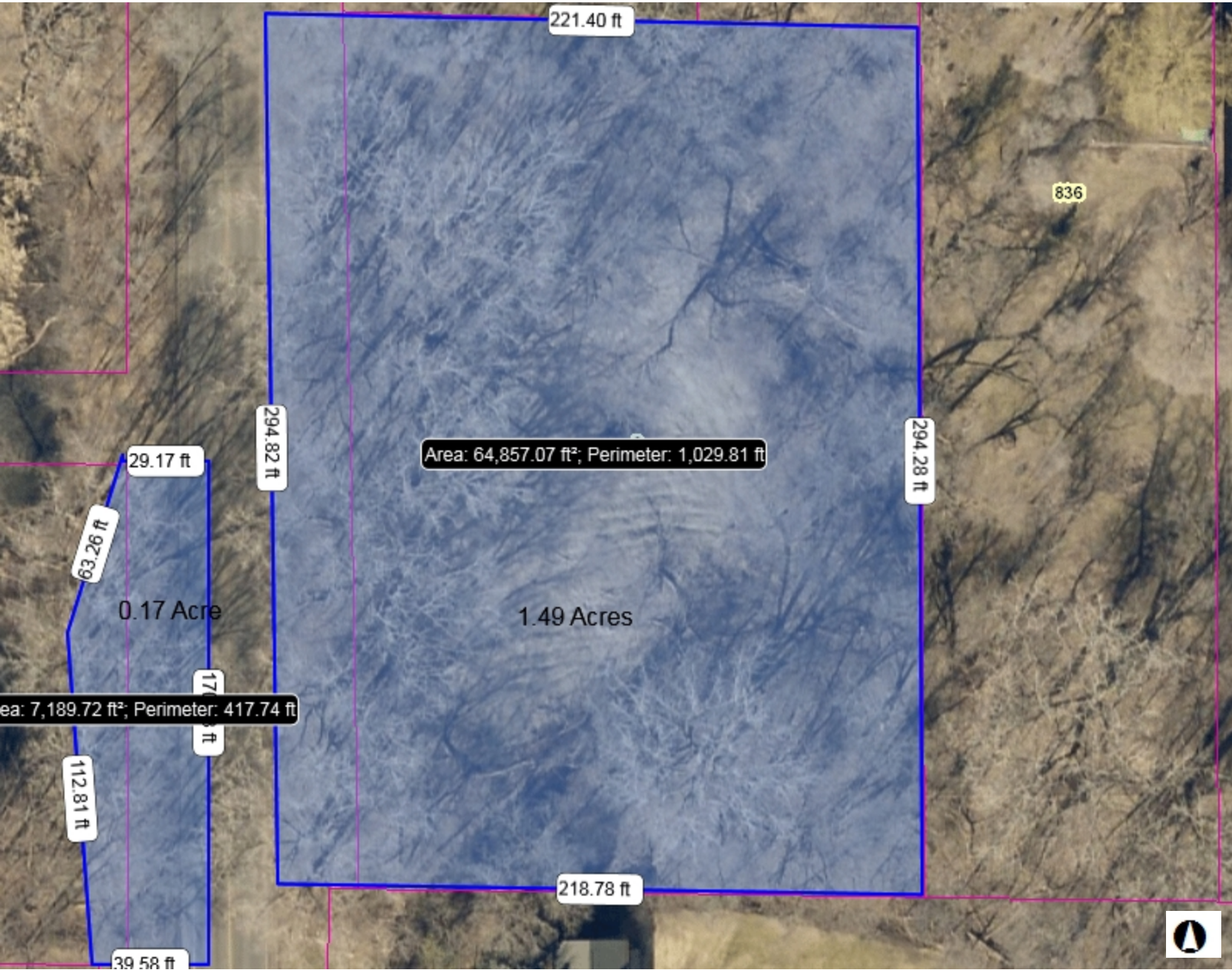
NAD_1983_HARN_Adj_MN_Ramsey_Feet
© Ramsey County Enterprise GIS Division

This map is a user generated static output from an Internet mapping site and is for reference only. Data layers that appear on this map may or may not be accurate, current, or otherwise reliable.

THIS MAP IS NOT TO BE USED FOR NAVIGATION



5. Reynoutria japonica; Victoria Roseville MN



NAD_1983_HARN_Adj_MN_Ramsey_Feet
© Ramsey County Enterprise GIS Division

This map is a user generated static output from an Internet mapping site and is for reference only. Data layers that appear on this map may or may not be accurate, current, or otherwise reliable.
THIS MAP IS NOT TO BE USED FOR NAVIGATION

Legend



- City Halls
- Schools
- Hospitals
- Fire Stations
- Police Stations
- Recreational Centers
- Parcel Points
- Parcel Boundaries

Notes

Scattered patches; total ~1.66 Acres



6. Tanacetum vulgare; Jim's Prairie, Maplewood MN



200.0 0 100.00 200.0 Feet

NAD_1983_HARN_Adj_MN_Ramsey_Feet
© Ramsey County Enterprise GIS Division

This map is a user generated static output from an Internet mapping site and is for reference only. Data layers that appear on this map may or may not be accurate, current, or otherwise reliable.
THIS MAP IS NOT TO BE USED FOR NAVIGATION

Legend



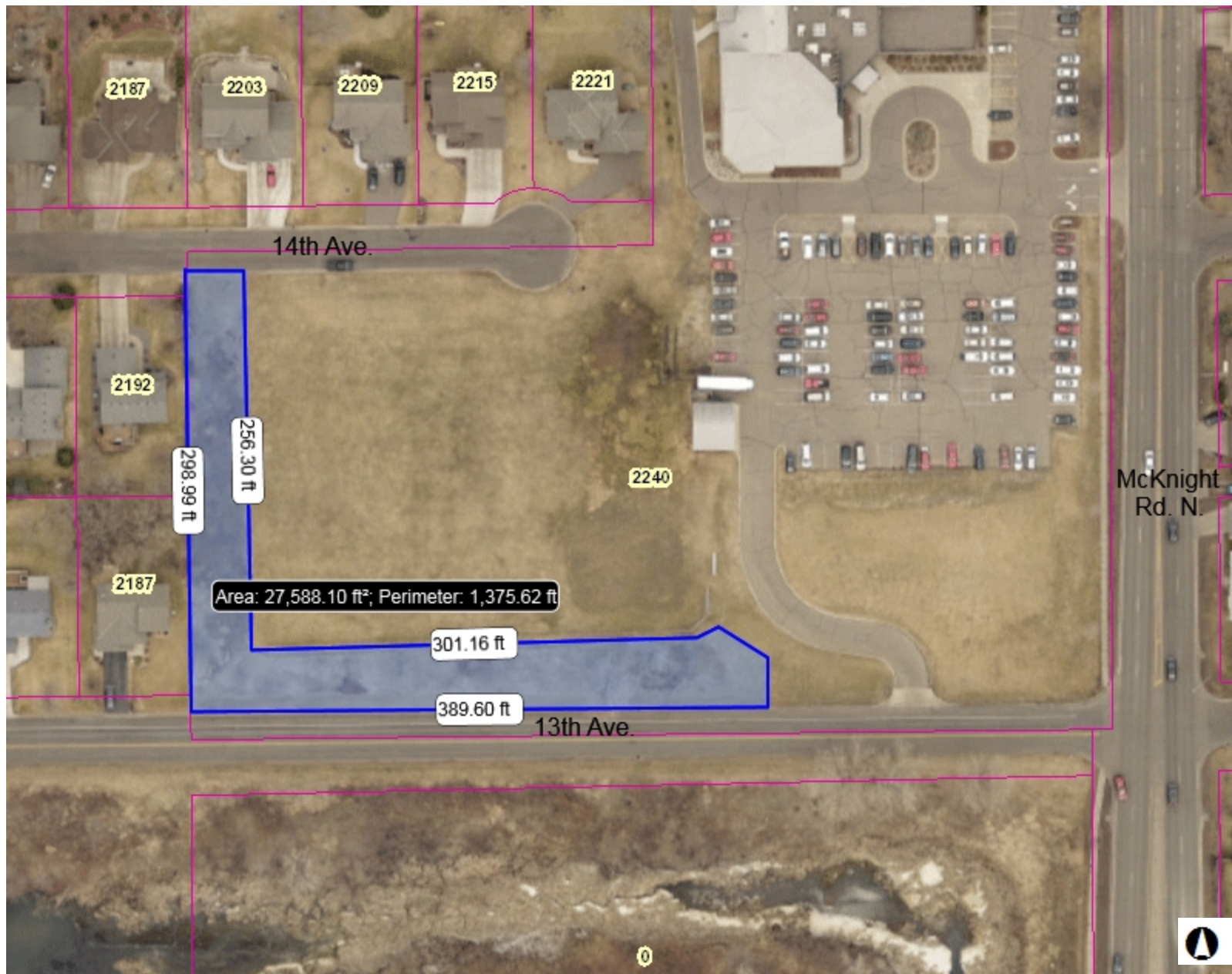
- City Halls
- Schools
- Hospitals
- Fire Stations
- Police Stations
- Recreational Centers
- Parcel Points
- Parcel Boundaries

Notes

Scattered patches; total ~11.5 Acres



7. Tanacetum vulgare; North Haven Church Baseball Fields, North St. Paul, MN



Legend



- City Halls
- Schools
- Hospitals
- Fire Stations
- Police Stations
- Recreational Centers
- Parcel Points
- Parcel Boundaries

Notes

Scattered patches; total ~0.63

200.0 0 100.00 200.0 Feet

NAD_1983_HARN_Adj_MN_Ramsey_Feet
© Ramsey County Enterprise GIS Division

This map is a user generated static output from an Internet mapping site and is for reference only. Data layers that appear on this map may or may not be accurate, current, or otherwise reliable.

THIS MAP IS NOT TO BE USED FOR NAVIGATION



8. *Torilis japonica*; Fish Creek Preserve, Maplewood and St. Paul, MN



Legend



- City Halls
- Schools
- Hospitals
- Fire Stations
- Police Stations
- Recreational Centers
- Parcel Points
- Parcel Boundaries

Notes

Sparse patches; total ~ 34 Acres

1,333.3 0 666.67 1,333.3 Feet

NAD_1983_HARN_Adj_MN_Ramsey_Feet
© Ramsey County Enterprise GIS Division

This map is a user generated static output from an Internet mapping site and is for reference only. Data layers that appear on this map may or may not be accurate, current, or otherwise reliable.

THIS MAP IS NOT TO BE USED FOR NAVIGATION