

5/14/2024

# Advancing Race and Health Equity

Daniel Schmidt



## What is health equity?

Equity is the proactive reinforcement of policies, practices, attitudes, and actions that produce fairness in power, access, opportunities, treatment, impacts and outcomes for all.

- *Ramsey County Climate Equity Action Plan*

Health equity is the state in which everyone has a fair and just opportunity to attain their highest level of health.

- *Centers for Disease Control and Prevention*

# What is environmental justice?

The fair treatment and meaningful involvement of all people regardless of race, color, national origin, or income, with respect to the development, implementation, and enforcement of environmental laws, regulations, and policies.

*US Environmental Protection Agency*

## What is environmental justice?

- According to the EPA, this goal will be achieved when everyone enjoys:
  - The same degree of protection from environmental and health hazards
  - Equal access to the decision-making process to have a healthy environment in which to live, learn, and work



## Healthy Homes

The Healthy Homes program teaches families how to reduce environmental dangers and have healthier kids. In some cases, an environmental health specialist or public health nurse may come to your home to help you find out if there are environmental hazards that are impacting the health of children.



Asthma



Lead at Home



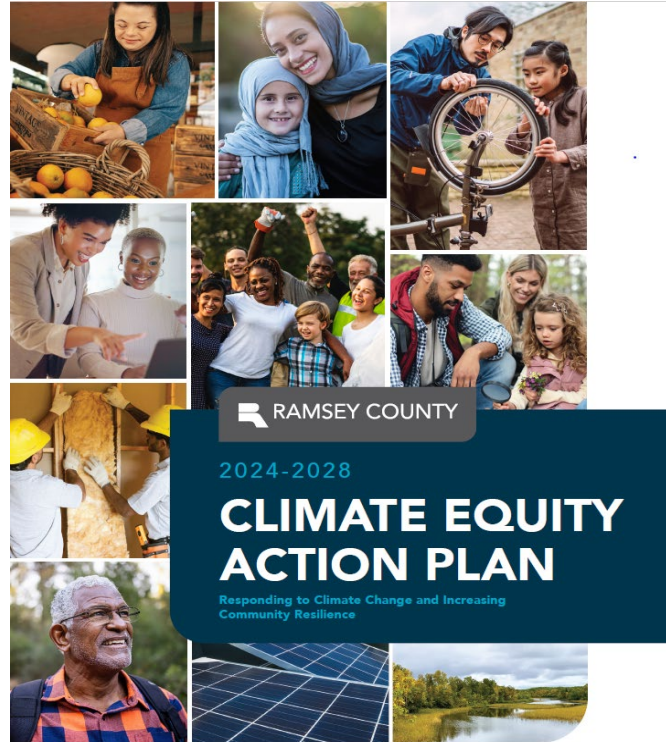
Radon



# Incorporating health equity and environmental justice

- Fellowships
- Building community capacity
- Addressing climate change
- Addressing environmental health risks
- Environmental Service Center example
- Emphasizing community engagement

# Multifaceted approach to health equity



## Community engagement

- Recognizes knowledge and strength of community - community members are experts in the problems and solutions where they live
- Improves decision-making by giving voice to community
- County's job is to serve residents, and getting direction from the community on how to do our work enables us to do a better job

# Solid Waste Management Plan engagement

- This committee!
- Pop-up community engagement - 14 events
- Resident survey
- Municipality survey and workshop
- Waste hauler conversations
- Internal county engagement



## What we've heard from this group

- More public education
- Explore and support bans, restrictions, or fees for single-use materials, including plastic bags, takeout containers, or similar
- Focus on hyper-local solutions, work with partners, empower community
- Support right-to-repair and EPR legislation
- Explore curbside collection of challenging materials (bulky materials, household hazardous waste)
- Support the development of recycling markets

## What we've heard from other engagement

- Residents want the county to prioritize addressing climate change, increase food scrap recycling opportunities, and improve services for managing unwanted bulky items.
- Municipalities want help addressing wood waste. They are interested in curbside setout day to support reuse of unwanted items. Prefer weekly recycling pickup to be a city decision.
- Some haulers have concerns about how extended producer responsibility might impact their operations.



**Questions?**

