

RICE STREET-LARPENTEUR AVENUE GATEWAY VISION PLAN



City of Roseville, Maplewood & Saint Paul

AGENDA

- Introductions 5 min
- Gateway Area Planning Committee Roles and Responsibilities 15 min
- Community Advisory Group Appointments 15 min
- Visioning Exercise 40 min
- Communications 10 min
- Schedule 5 min

INTRODUCTIONS

CONSULTANT TEAM



John Slack

Project Manager + Senior
Landscape Architect
Perkins+Will



Jay Demma

Senior Planner
Perkins+Will



Mike Lamb

Senior Planner +
Urban Designer



Ben Sporer

Senior Landscape Architect
Perkins+Will



Lydia Major

Public Engagement Lead +
Senior Landscape Architect
LHB

GATEWAY AREA PLANNING COMMITTEE ROLES AND RESPONSIBILITIES

GATEWAY AREA PLANNING COMMITTEE (GPC)

Responsibilities

- Help to determine community needs and desires for the project area.
- Assist in the establishment of project priorities.
- Provide input on selection of Community Advisory Group (CAG) membership
- Ensure that the full range of issues are discussed during the design process.
- Prioritize project goals on behalf of the City and/or agency they represent.

GATEWAY AREA PLANNING COMMITTEE (GPC)

- Drive and manage Community-based change through the duration of the study.
- Review plan concepts and provide input on major design elements.
- Sharing project information and bring suggestions from community, stakeholders, and respective organizations.
- Making final plan recommendations and implementation strategies based on consensus-based input.
- Help communicate project and plan review process to community.
- Support and promote Rice Street/Larpenteur Avenue Gateway Area Master Plan project to elected officials, the business community, and constituents/community members.

GATEWAY AREA PLANNING COMMITTEE (GPC)

Additional Discussion Items

- How does this group make decisions/build consensus?

COMMUNITY ADVISORY GROUP APPOINTMENTS

COMMUNITY ADVISORY GROUP (CAG)

- Discuss and select representatives

VISIONING EXERCISE

SUMMARY OF GOALS AND DESIRED OUTCOMES

Question #1: (30 second response)

What are some other GOALS and/or OBJECTIVES we need to consider as part of this planning process?

Question #2: (30 second response)

What outcomes will ensure a successful project? What does a successful project look like?

SUMMARY: QUESTION 1

- Bring St. Paul community together in a more organized way
- Align the municipalities' zoning and design standards
- Planning for safety
- Actionable step and successes for cooperation between agencies
- Reinvestment tied to neighborhoods to provide services, connectivity and jobs
- Framework for successful businesses--emphasizing "node"
- Recognize the demand for affordable housing in this area
- All the above: Connectivity
- Resolving barrier of wetlands between residential and business areas

SUMMARY: QUESTION 1

- Reduce the vehicle traffic
- Classing it up but support social interaction
- Create a sustained conversation with the property owners so that they are invested in the outcomes
- Make it a key intersection (not at the edge)
- Make sure that results are visible in the very short term
- Create a blueprint for other multi-jurisdictional efforts

SUMMARY: QUESTION 2

- Sense of arrival and gateway when you come to this intersection of three cities
- Area that draws people from Maplewood
- Shouldn't matter which side of the street you're on - unified
- Identity for this area (name recognition)
- Ongoing positive relationships between people and businesses in all three cities
- Pedestrian-first neighborhood
- Not just someplace you live because you can't live somewhere else
- Visitors go to multiple businesses when they come - a district feel
- Neighborhood has a sense of ownership and pride

SUMMARY: QUESTION 2

- Increase in tax base (indicator of broader success described above)
- A place where there are opportunities to live and do business (and not just chain stores)
- Continue to see reinvestment in the area and mitigate public safety concerns
- No trash, more green space/trees, sidewalks throughout, activated public spaces, new/active retail (including outdoor retail), increase property values, infill along corridor
- Reinforce Identity.....Name for the neighborhood
- Connect to greenspaces like McCarrons Lake

EXERCISE #1: ISSUE IDENTIFICATION

Part 1: (20 Minutes)

- Separate into two groups. Each group will have a scribe to document the comments
- Group 1: Identify corridor strengths/opportunities and unique things to remain
- Group 2: Identify corridor issues/concerns/things that should change

Part 2: (15 Minutes)

- Groups switch to respond to other topic area
- Group 1: Identify corridor issues/concerns/things that should change
- Group 2: Identify corridor strengths/opportunities and unique things to remain

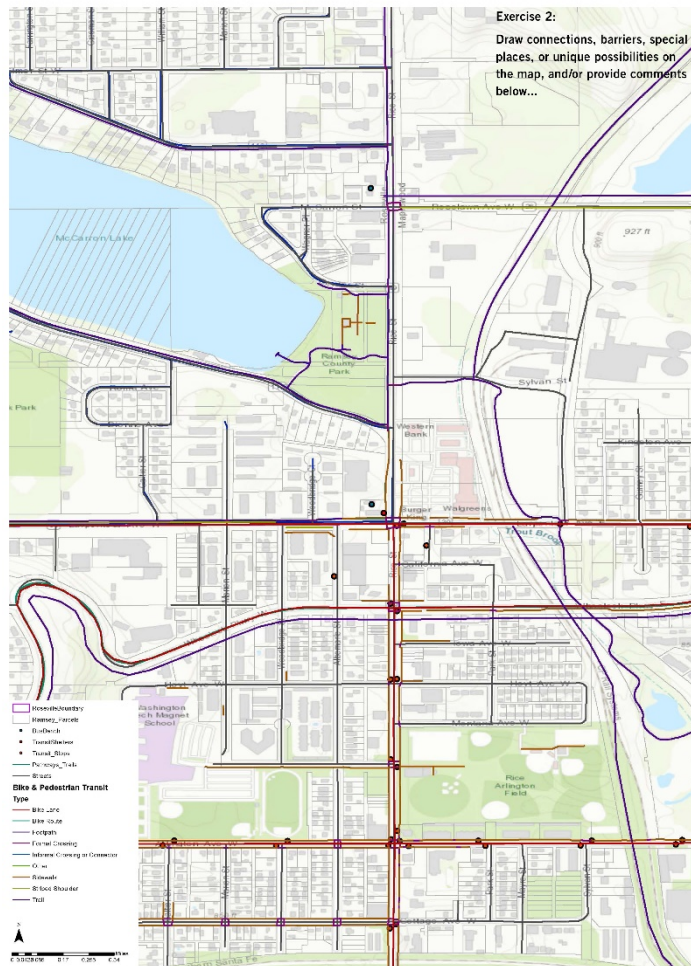
EXERCISE #2

Resource Mapping: (Homework due on April 28th)

On the provided map please identify/draw connections, barriers, special places, or unique possibilities within the project area.

Please also provide written comments as needed.

EXERCISE #2



Rice Street/Larpenteur Avenue Gateway Area Vision Plan

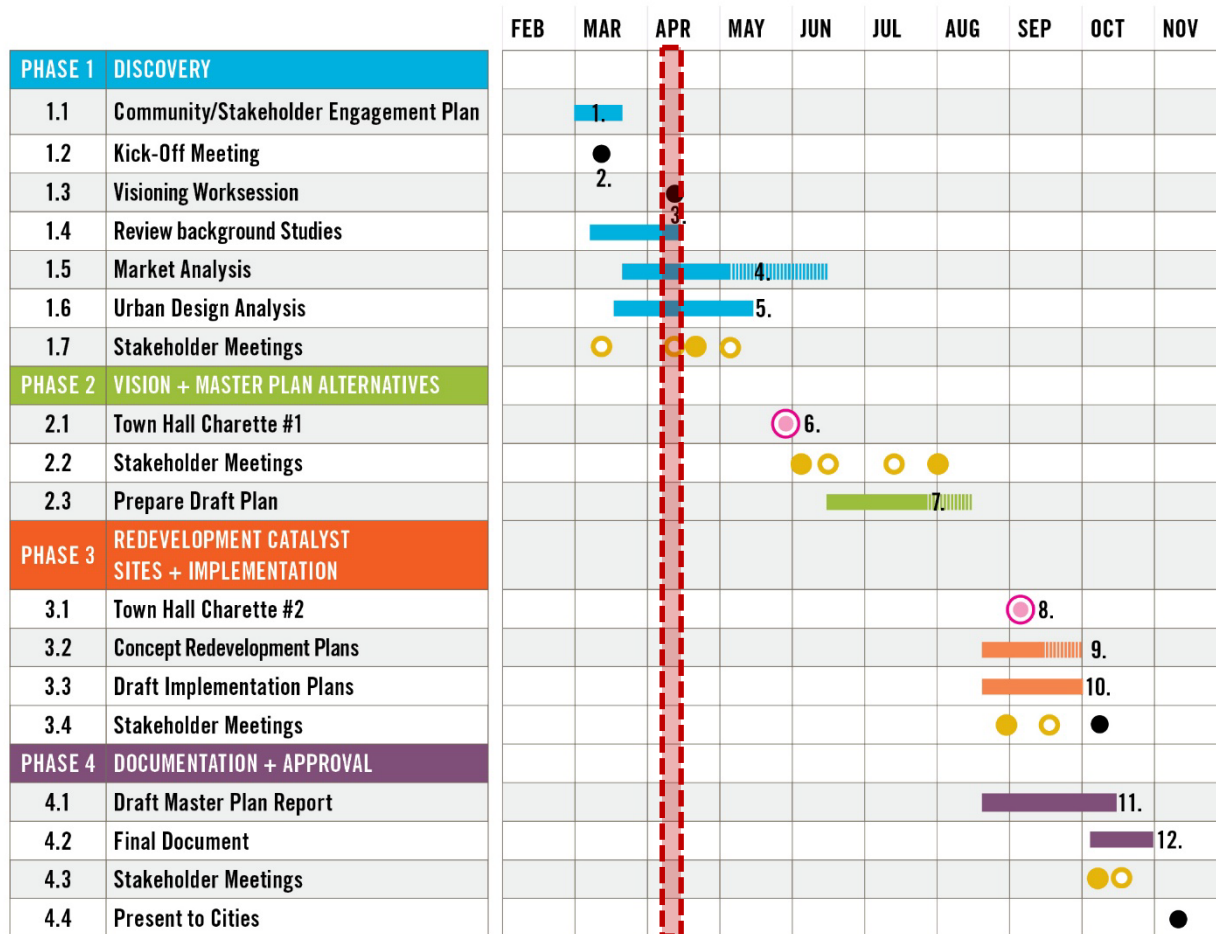
COMMUNICATIONS

COMMUNICATIONS

- Project Box.com
- Project website
 - Defining a website “host”
- Other communication protocols
 - Talking to the media
 - Project summary sheet

SCHEDULE

2017



- Milestone Meetings
- Charette
- GPC Meetings
- CAG Meetings

SCHEDULE

- GPC Visioning Session (Meeting #2)
 - *April 20th*
- GPC Meeting #3
 - *May 18th*
- CAG Meeting #1
 - *TBD Mid-May*
- Town Hall Charrette #1
 - *End of May*
- GPC Meeting #4
 - *June 22nd*

QUESTIONS

Rice Street-Larpenteur Avenue Gateway Vision Plan

Gateway Area Planning Committee

Goal of the GPC

A GPC of elected officials, policy makers and pertinent staff representatives has been established for the Rice Street/Larpenteur Avenue Gateway Area Master Plan. The GPC will work closely with the consultant team, to develop and evaluate Rice Street/Larpenteur Avenue Gateway Area Master Plan alternatives, and make recommendations on a preferred plan. Members of the GPC will also be asked to provide advice and assistance to the project team for broader community outreach to residents and businesses in the study area, as they are able and willing to do so. The GPC will meet at key milestones during Rice Street/Larpenteur Avenue Gateway Area Master Plan development, and more frequently if needed. Stakeholders will represent residents and neighborhood organizations, neighborhood business owners, governmental agencies and elected officials.

Role of the GPC

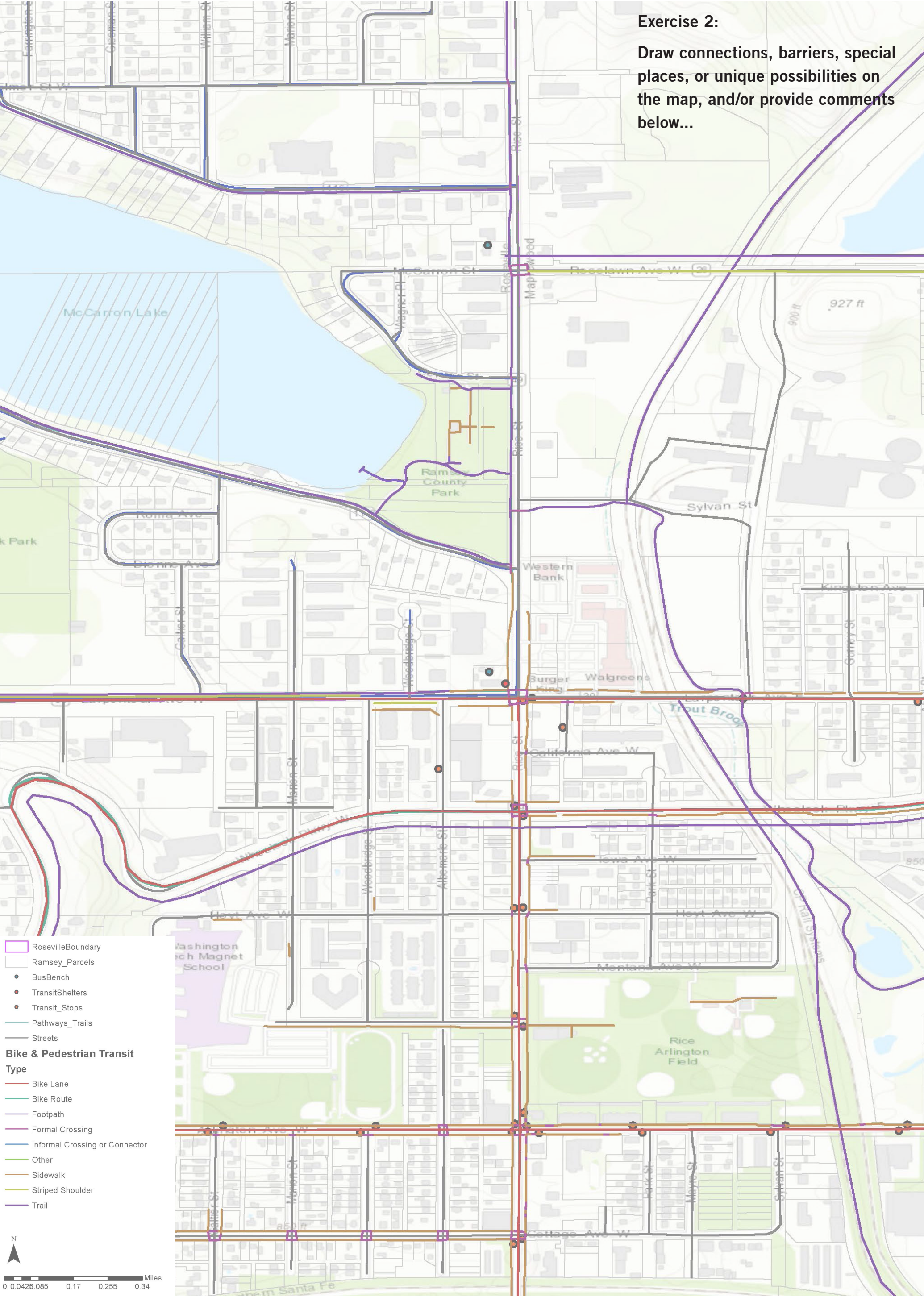
The role of the GPC is to advise and guide project planning efforts, review project deliverables, assist with community outreach and engagement efforts, provide community expertise, provide plan recommendations based on insights and priorities defined throughout the process from a community standpoint. Committee representatives will provide a range of views and/or experiences that include Economic, Infrastructure and Urban Design.

The GPC as a whole is responsible for the following:

- Help to determine community needs and desires for the project area.
- Assist in the establishment of project priorities.
- Provide input on selection of Community Advisory Group (CAG) membership
- Ensure that the full range of issues are discussed during the design process.
- Prioritize project goals on behalf of the City and/or agency they represent.
- Drive and manage Community-based change through the duration of the study.
- Review plan concepts and provide input on major design elements.
- Sharing project information and bring suggestions from community, stakeholders, and respective organizations.
- Making final plan recommendations and implementation strategies based on consensus-based input.
- Help communicate project and plan review process to community.
- Support and promote Rice Street/Larpenteur Avenue Gateway Area Master Plan project to elected officials, the business community, and constituents/community members.

Committee Membership Expectations:

- Meetings will start and end on time. Members must arrive on time to meetings.
- Serve as stewards of the Rice Street/Larpentour Avenue Gateway Area Master Plan process to the community.
- Members will be respectful of the opinions and concerns of other committee members or people meeting with the committee.
- Members will review all written materials distributed to the committee.
- Members will inform City(s) staff if they cannot attend a meeting, and review materials and results from that meeting prior to the next committee meeting.
- Represent and advocate for the interests of his/her constituency as well as the interests of the Rice Street/Larpentour Avenue Gateway Area study area as a whole.
- Attendance at all meetings is expected and critical. Members should be committed to attending approximately (7) meetings with project consultant team. Unexcused absences from two or more meetings will result in removal from the committee.
- Members have been appointed due to unique sets of skills and experiences. Members should draw on these experiences when participating in committee discussion. While many committee members may be members of other groups and organizations, committee members are not, for purposes of this committee, considered official representatives of another group.
- Share relevant information (historical, background) with the GPC.
- The goal of this process is an open and fair discussion of the issues during committee meetings. Members will avoid off-line group discussions that are not part of the public process.
- The committee will provide feedback through discussion at meetings and will generally not take votes. However, if a final vote is taken at the conclusion of the process the co-chairs will follow Roberts Rules of Order.
- Members acknowledge that the City's policymakers (elected and appointed) may make decisions they do not agree with but that does not necessarily mean the process was flawed or unfair.
- Help "staff" community engagement events, such as open houses, workshops, etc., attend project events, and host/sponsor engagement opportunities in the community.
- If members discuss the project with the media, they should be clear that they are representing their own views and are not speaking for the GPC or the Rice Street/Larpentour Avenue Gateway Area Master Plan project.
- Assist in informing constituencies about the Rice Street/Larpentour Avenue Gateway Area Master Plan project.



Rice Street/Larpenteur Avenue Gateway Area Vision Plan