

# Environmental Health Division

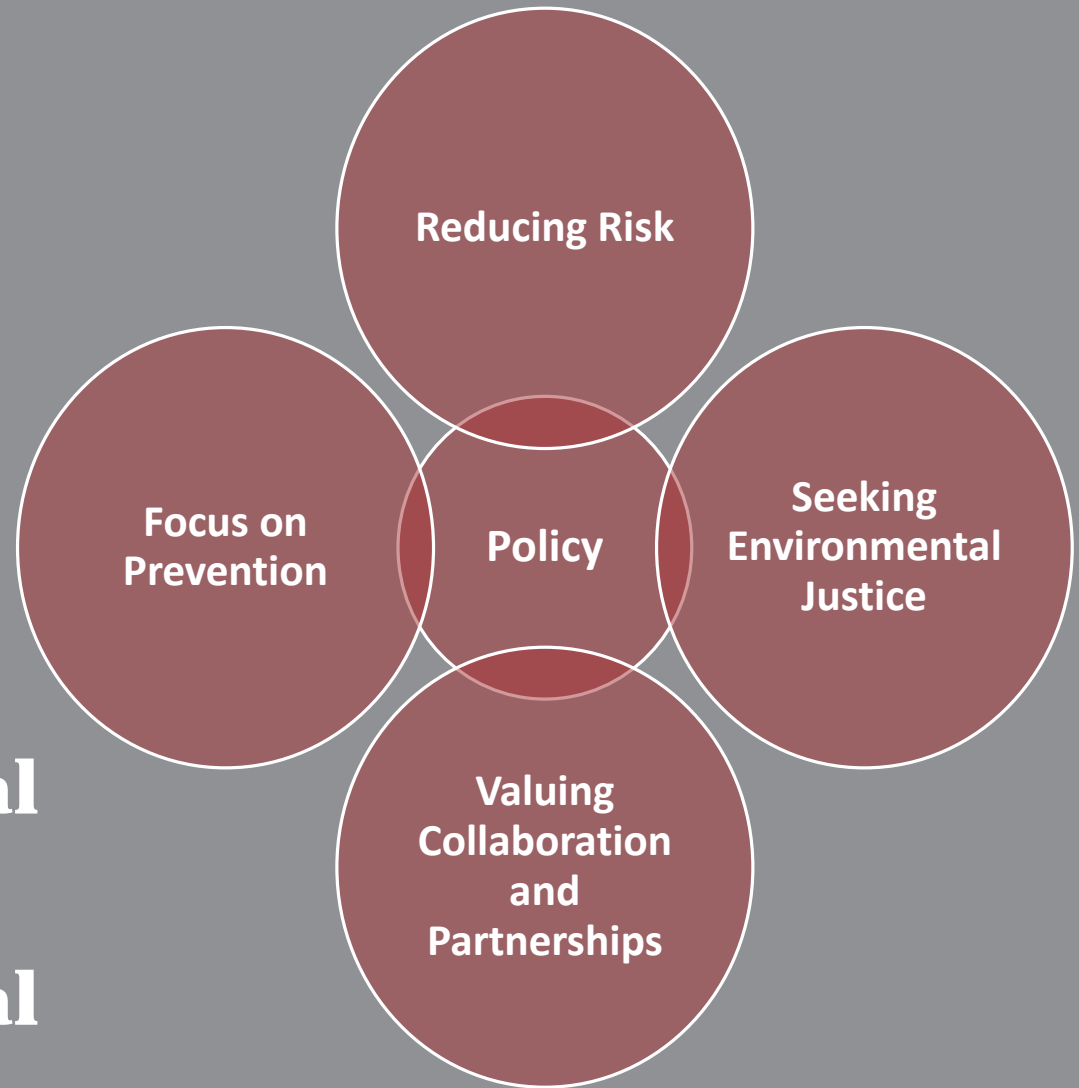
What we do & why we care







- ✓ **Environmental Health**
- ✓ **Environmental Protection**





# Solid & Hazardous Waste Compliance



Laura Piotrowski



Caroline Lund



Karen Reilly



Michael Reed, Supervisor



Aaron Chavez



Joe Wozniak



Paul Gelbmann



**1385 hazardous  
waste  
inspections per  
year**





**194 pre-demo  
inspections per  
year**







**Of the roughly 150 pre-demolition inspections performed by EH each year at houses & buildings, what percent contain asbestos?**

**A. 10%**

**B. 45%**

**C. 60%**

**D. 80+%**



# Recreational Water Illness Police



<https://www.youtube.com/watch?v=KTBowy5l8dg>

# Community Environmental Health





**Inspected and Licensed**  
**“World’s Longest Ice Cream Sundae”**  
White Bear Lake | June 20, 2013

An aerial photograph of a town street, likely White Bear Lake, showing a large crowd of people gathered along the sidewalks and in the street. A large red arrow is superimposed over the image, pointing horizontally across the street. The arrow is filled with a solid red color and has a black outline. The text "1101 Feet- Constructed by over 600 volunteers" is written in white, sans-serif font across the center of the arrow. The background shows a mix of residential houses, trees, and commercial buildings, with many cars parked along the street and in parking lots. The overall scene depicts a community event where a long ice cream sundae was constructed.

**1101 Feet- Constructed by over 600 volunteers**



# **“World’s Longest Ice Cream Sundae”**

## **White Bear Lake | June 20, 2013**

- 220 gallons of ice cream
- 110 cans of whipped cream
- 228 pounds of chocolate syrup
- 228 pounds of caramel syrup
- 110 pounds of strawberries
- 600 ice cream scoops
- 200 volunteers to set up sundae
- 600 volunteers scooping



# Initial Public Health Concerns

- Enough handwashing set ups
- Washing hands too early
- 3 sanitarians monitored hand washing
- Bare hand contact/hair restraints
- Each section was given a box with supplies
- Many volunteers with no experience
- 3 section leaders did onsite “training”
- Ill volunteers
  - If ill could not participate
- Gutter used as “bowl”
- Food grade lubricant
- Outside contaminants
- Intentional contamination
- Public Consumption
- Leftover ice cream- possible solid waste issues



# The Big Night

## What We Actually Saw

- Temperature outside 86°F
- Handwash set ups
  - Too hot
  - Dirty water
  - Supplies
- Animals
- Kids
- Communication with event organizers and each other
- 8,000 people attended the event
- Took 1 hour and 45 minutes to create



# Hall of Shame





Staff sorting household hazardous waste





**Bathtub full of human feces in a “garbage house.”**





Debris found in a “garbage house.”





Debris found in a “garbage house.”





**What is the most common violation written for a restaurant inspection?**

- A. Hemorrhoid cream on steam table
- B. Live ducks in walk-in cooler
- C. Improper hand washing stations
- D. Mouse nest under grill while cooking



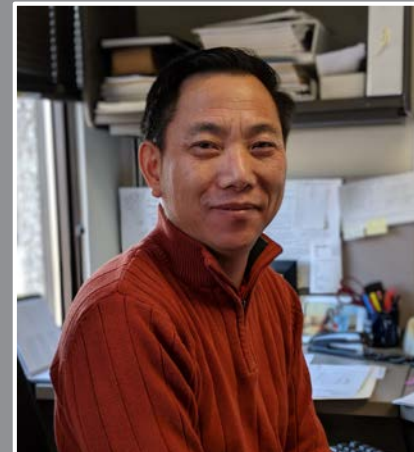
# Lead & Healthy Homes



Jim Yannarely, Supervisor



Mike Gilles



Yia Khang



Matt Kudwa



Daniel Schmidt





**Window – covered in lead-based paint where a child was poisoned – later replaced the windows through our program.**



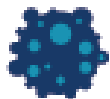


Exterior of a house with lead-based paint.

## Asthma & Allergy Triggers:



**CIGARETTE  
SMOKE**



**POLLEN**



**DUST &  
THEIR MITES**



**PET DANDER**



**MOLD**



**UNWANTED  
PESTS**



**How many windows  
has the Lead & Healthy  
Homes Program  
replaced since 1996?**

- A.** Over 10,000
- B.** 4,500
- C.** 2,000
- D.** 850



# Solid Waste Operations



Pete Miller



John Springman, Supervisor

















Ramsey County's Product Reuse Center

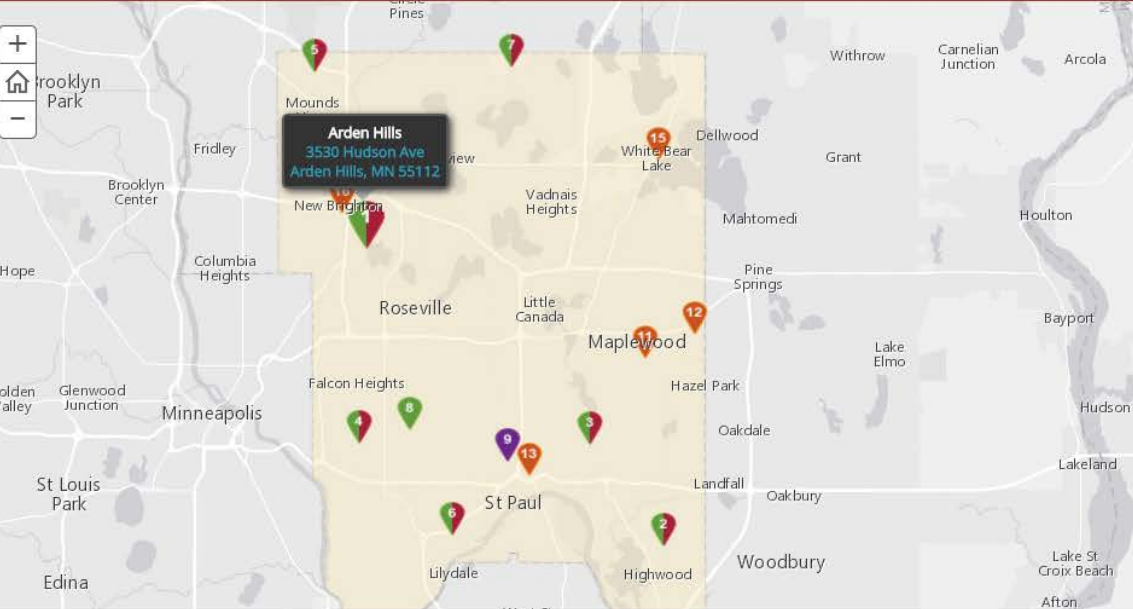




Ramsey County Recycling and Waste Collection

Ramsey Recycles

- Organic and Yard Waste
- Organic Waste
- Household Hazardous Waste
- Medicine Collection



**Arden Hills**  
3530 Hudson Ave  
Arden Hills, MN 55112

**Yard and Organic Waste**  
Accepts: organic waste, leaves, grass and garden waste  
[More about organics and yard waste](#)

**Hours:**  
Saturday: 9 a.m. - 5 p.m.  
Sunday: 11 a.m. - 5 p.m.  
Closed: New Years Day, Memorial Day, July 4th, Labor Day, Christmas Day



**How many pounds of household hazardous waste (paint, cleaners, used oil, etc.) were collected in 2016 in Ramsey County?**

- A. 17**
- B. 1.4 million**
- C. 735,627**
- D. A bazillion**



# Solid Waste Programs



Joel Andersen



Dan Donkers



Jean Buckley



Delivering recycling bins to County employees with the first all-electric vehicle in the County's fleet.









Public spaces & events



Internal recycling



Municipal recycling programs

# Save the Food

[https://www.youtube.com/watch?v=WREXB  
UZBrS8](https://www.youtube.com/watch?v=WREXB<br/>UZBrS8)





# Outreach & Engagement



Mary Elizabeth Berglund, Supervisor



Liz Dillon



Tara Roffler



Lisa Marshall



Terese Bordeaux



## RECYCLING IN RAMSEY COUNTY IS EASY

Discover Ramsey County recycling categories below.

**HOUSEHOLD  
HAZARDOUS  
WASTE**

**HOUSEHOLD  
RECYCLING**

**ORGANIC  
WASTE**

**YARD  
WASTE**

**BUSINESS  
RECYCLING**

**SEARCH  
A TO Z  
RECYCLING  
GUIDE**





## TRIVIA PRIZE WHEEL

Contestants spin the wheel and answer a recycling trivia question.



## RECYCLING FISHING

Learn what can be recycled by helping to clean up a pond.



## CAN CUBE GAME

Using math and a little luck, figure out how many cans are in the can cube.



## RECYCLING RELAY

Learn how to sort common items in your home into the recycling, trash or organics bin.



## A to Z Recycling & Disposal Guide

Guide for recycling or properly disposing of items. Search, browse by category or [view a full A to Z list](#).

What do you want to get rid of?

Search

Browse by Category

- + Appliances
- + Electronics
- + Household Hazardous Waste
- + Large Bulky Items
- + Medicines
- + Organic Waste
- + Recycling at Home
- + Recycling at Work
- + Yard Waste

### Contact Us

Recycling & Disposal Hotline

[651-633-3279](tel:651-633-3279) (EASY)

Answered 24/7

[Contact form](#)

Live chat





## Ramsey County, Minnesota

November 25 at 11:00am · 🌐

String lights can add lots of sparkle to your home - until the bulbs go out! Bring them to the free Household Hazardous Waste drop-off site where they'll be safely disposed of.

[RamseyRecycles.com/hhw](https://RamseyRecycles.com/hhw)



**RamseyCounty** @RamseyCounty · 4h

Did you know that coffee grounds and filters can be recycled as Organic Waste? Start collecting them in a compostable bag, then bring it to a free drop-off site. [#ramseyrecycles ramseyrecycles.com/organicwaste](https://ramseyrecycles.com/organicwaste)



RAMSEY COUNTY

#RamseyRecycles



Comment

Share



# Fix-it Clinics

[https://www.youtube.com/watch?v=8YYDsJR  
WtBc&t=1s](https://www.youtube.com/watch?v=8YYDsJRWtBc&t=1s)



# Administrative Support



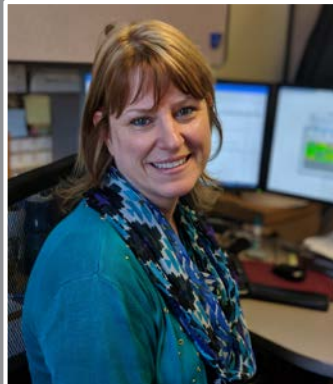
Debra Dahl



Joan Danielson



Mary Elizabeth Berglund, Supervisor



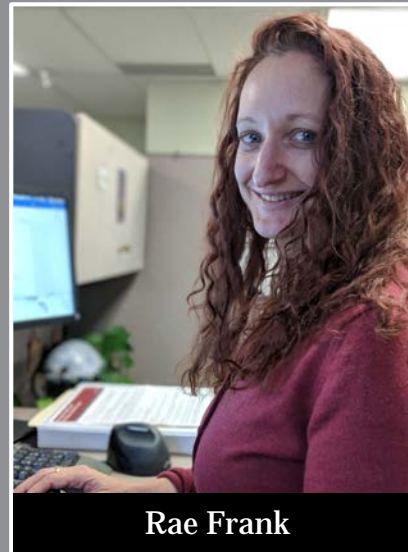
Katie Shaw



Katie Keller



# Policy, Planning, & Evaluation



# Solid Waste Management Master Plan

## 2018 – 2038

RAMSEY COUNTY SOLID WASTE MANAGEMENT MASTER PLAN | 2018 - 2038

### RAMSEY COUNTY POLICIES AND STRATEGIES

#### CHAPTER 1: OVERARCHING POLICIES

##### Overarching Policy 1: Product Stewardship

Ramsey County strongly supports a product stewardship framework, also known as extended producer responsibility, which creates effective producer-led reduction, reuse and recycling programs to address a product's lifecycle impacts from design through end-of-life management, without relying solely on state and local governments. Product stewardship has historically focused on products with a toxic or hazardous character, but should be focused broadly on other products, such as packaging and bulky items including mattresses. Such an approach can reduce the need for government programs to ensure proper end-of-life management of discarded items. Ramsey County believes the objectives in the Policy Plan are more likely to be met and sustained in an affordable manner only if a product stewardship framework is implemented in Minnesota.

##### Overarching Policy 2: Waste Hierarchy (Landfill Diversion) Goal

Minnesota spends a considerable amount of time and money measuring progress in solid waste management. Ramsey County believes strongly in measuring performance of the system in a meaningful manner. Ramsey County urges the Minnesota Pollution Control Agency (MPCA) to implement changes in data gathering and evaluation that are more efficient and that will focus on meeting policy objectives and not solely on measuring every ton of material. The MPCA should move to a measurement system that focuses on a goal of diversion from landfill and at the same time assures that waste is moved up the hierarchy. This waste hierarchy goal would more accurately focus on the goals of the Waste Management Act and would be a more sensible approach to performance measurement. The waste hierarchy goal aimed at driving waste to the best management method ensures public and environmental health and reduces risks.

##### Overarching Policy 3: Market Development

Minnesota needs a comprehensive, long-range plan for market development in order to pivot our thinking from "waste" to "resource." When a material is discarded by someone, it is a waste. When that material is used by someone else, it is a resource. Recycling and waste processing harvest resources by accumulating discarded materials and processing them into new products. Recycling and processing activity in Minnesota captures these resources and generates economic activity in the State.

Recycling is important in local economies. We currently have a good recycling economy in Minnesota, which includes export of some materials to other parts of the United States and overseas. Although we have a good recycling economy in Minnesota, the market for products from organics management has been largely non-existent. The region will rely significantly on



Figure 8. Minnesota has a strong recycling economy. However, end markets for organics have been lacking.

### Full Impact Assessment: Extreme Heat

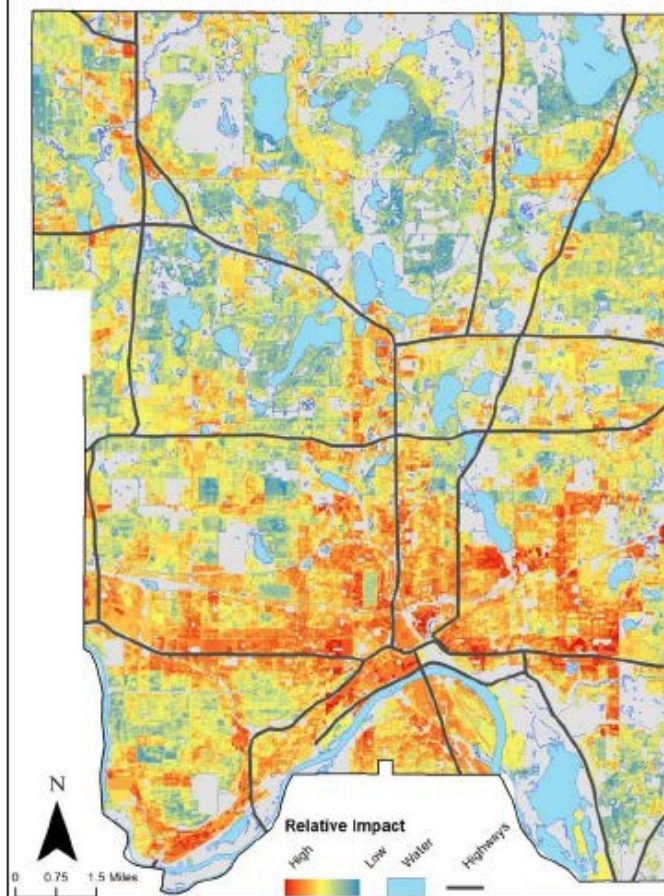


Figure 7. Extreme heat full impact assessment (normalized data). Warmer colors indicate regions with more environmental risk factors & more individual vulnerability. Note strongly impacted areas, such as downtown Saint Paul, north & slightly south of I-94, along I-35E, along West 7<sup>th</sup> Street, & in isolated suburban pockets.





# Emergency Preparedness and Response Fundamentals

## Training for Environmental Health Professionals

Developed by the Twin Cities  
Metro Advanced Practice Center



This online training was supported by Cooperative Agreement Number U50/CCU302718 from the Centers for Disease Control and Prevention (CDC) to the National Association of County and City Health Officials (NACCHO). Its contents are solely the responsibility of the authors and do not necessarily represent the official views of CDC or NACCHO.



**What does PEIG stand for?**

- A. Pigs Eat Interesting Grapes
- B. Protecting Environmental Integrity Grant
- C. Public Entity Innovation Grant
- D. Please Enter In Groups

Ramsey/Washington  
**RECYCLING &  
ENERGY BOARD**



Zack Hansen, Supervisor



Jessica Paquin



Kris Wehlage



Mike Hagen



Kelli Hall



Rana Campbell-  
Beams





# RECYCLING & ENERGY CENTER

CONNECTING VALUE TO WASTE





Boston Scientific



Saint Paul Saints

<https://www.youtube.com/watch?v=rx47xJMtPK8&feature=youtu.be>