


Health Impact Assessment

GATEWAY CORRIDOR

Saint Paul-Ramsey County Community Health Services Advisory Committee

March 2, 2016

Gateway Corridor Health Impact Assessment



Outline

- Gateway Corridor overview
- Comprehensive Planning 101
- Review each element and draft recommendations
- Discussion
- Next steps

Gateway Corridor Health Impact Assessment



Gateway Corridor



Potential Station Locations

Gateway Corridor Health Impact Assessment



Bus Rapid Transit



## What do we want the future to look like?



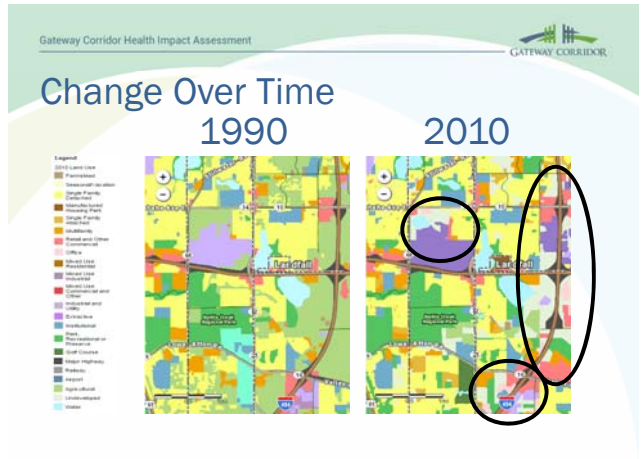
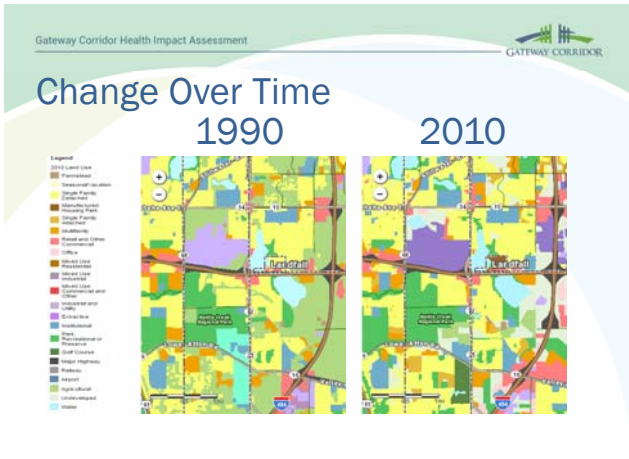
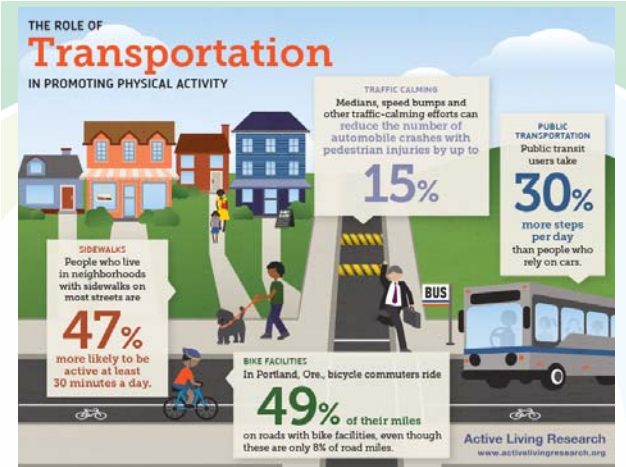
## Public Health and Planning


- Shared Language
  - Public Health
  - Land Use
  - Planning
  - Built Environment

## Importance of the Built Environment

- Definition
  - The human-made space in which people live, work, and play on a day-to-day basis.
- Built Environment and Health





Gateway Corridor Health Impact Assessment 

## Who determines land use?

- Local Governments
  - Cities
  - Counties
- Minnesota Statute 462.357: “For the purpose of **promoting the public health, safety, morals, and general welfare**, a municipality may by ordinance regulate on the earth’s surface, in the air space above the surface, and in subsurface areas ...”


Gateway Corridor Health Impact Assessment 


## Comprehensive Plans

- The foundation for local planning as it acts as an outline of the community's vision and priorities.
- Long range plan for land use and development in a community
  - Anticipating change over the next 20 years
- Guide decision making

Gateway Corridor Health Impact Assessment 

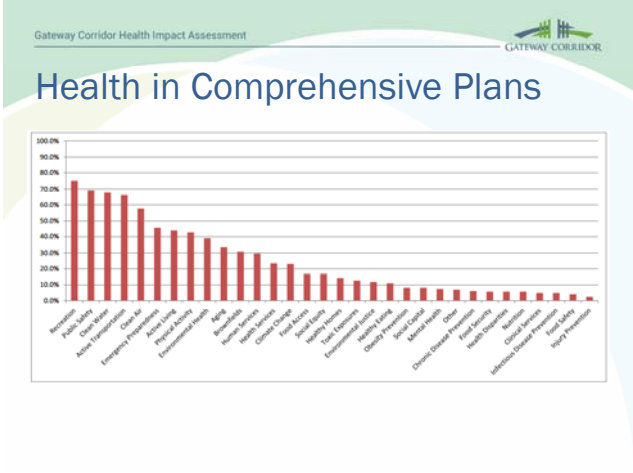
## Plan Elements



Gateway Corridor Health Impact Assessment 

## Health in Comprehensive Plans

Comprehensive Plans	Built Environment Health Determinants	Health Outcomes
<ul style="list-style-type: none"> <li>•Land Use</li> <li>•Housing</li> <li>•Transportation</li> <li>•Capital Facilities</li> <li>•Natural Environment</li> <li>•Economic Development</li> <li>•Parks and Recreation</li> </ul>	<ul style="list-style-type: none"> <li>•Opportunities for Physical Activity</li> <li>•Access to Health Supportive Resources                             <ul style="list-style-type: none"> <li>• Jobs, services, etc</li> </ul> </li> <li>•Risk of Physical Injury</li> <li>•Natural Environment</li> <li>•Social Environment</li> </ul>	<ul style="list-style-type: none"> <li>•Heart Disease</li> <li>•Injury</li> <li>•Diabetes</li> <li>•Stroke</li> <li>•Depression</li> <li>•Stress</li> <li>•Health Disparities</li> <li>•Cancers</li> <li>•Asthma</li> <li>(etc...)</li> </ul>



- Gateway Corridor Health Impact Assessment
- ### Comprehensive Planning Timeline
- Final plans due to Metropolitan Council by December 31, 2018
  - Comprehensive planning begins with the US Census
  - Planning is happening now

- Gateway Corridor Health Impact Assessment
- ### Health Impact Assessment Update
- Health elements
    - Connectivity
    - Housing
    - Jobs
    - Safety
  - Community input
  - Vision statements
  - Draft recommendations

Gateway Corridor Health Impact Assessment

### Connectivity

Provide convenient and reliable ways to walk or bike to basic needs and services

## Community Input

- Desire for sidewalks and bicycle routes
- Safe places to walk and bike



## Why it Matters to Health

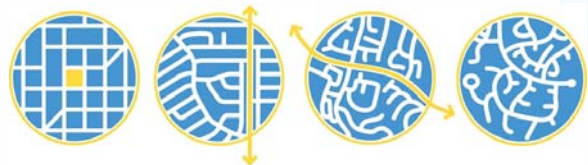
- Access to basic goods and services
  - Impacts to socioeconomic status and physical, social, and mental health
- Safety
  - Discussed in more detail in Safety section

## Connectivity Assessment

- Bike and walk scores for Gateway communities
- Development patterns - parking assessment

## Draft Recommendations

- Grid Street Network
  - Accessibility
  - Efficient
  - Reliable



## Draft Recommendations

- Provide bike lanes and sidewalks
  - Physical activity
  - Promote a safe environment
  - Enhanced sense of community
- Development patterns

## Housing

Increase housing options for all ages and income levels in the Gateway Corridor station areas

## Community Input

- Desire for affordable housing for all ages and income levels
- “It is difficult to remain healthy if basic needs for food and shelter are not met. Struggling financially to pay rent leads to fewer funds for healthy foods, less time to exercise and leads to significant emotional stress which, in turn, leads to higher levels of morbidity and mortality.”  
—Community Representative

## Why it Matters to Health

- Socioeconomic status
  - Lack of insurance
  - Food insecurity
  - Lack of proper health care
- Unstable housing conditions
  - Quality of life
  - Stress and depression

## Housing Assessment

- Affordable housing conditions
  - Households spending more than 30% of their income on housing
- Progress towards regional housing goals
- Housing cost burden
- Density

## Draft Recommendations

- Assess housing needs
- Range of housing options
  - Modify land use plans
- Focus housing near stations
  - Transportation costs 2<sup>nd</sup> biggest budget item for most families

## Jobs

Increase the number and variety of jobs available within the Gateway Corridor

## Community Input

- Jobs at the Gateway Corridor stations provide an incentive to use transit services
- Important that entry-level and living-wage jobs are situated around stations





## Why it Matters to Health

- Socioeconomic status
  - Similar to housing
    - Lack of insurance
    - Food insecurity
    - Lack of proper health care
- Job instability
  - Physical and mental health



## Jobs assessment

- Unemployment and underemployment in Gateway cities
- Industrial diversity
- Poverty
- Projected employment growth
- Transit access to jobs
- Economic development initiatives



## Draft Recommendations

- Increase transit connections to jobs
  - Affordable, reliable way to get to work
- Support new jobs and businesses at station areas



## Safety

Create safe places for walking and bicycling, while reducing crime

## Community Input

- Importance of safely traveling to and from stations and other local destinations
  - Need for complete and well-maintained sidewalks, well-lit streets
  - Easy access between housing, retail, services, and jobs

## Why it Matters to Health

- When designed well, spaces can help meet biological, social, and economic needs of the population.
  - Spaces prevent injury and crime
  - Promote health behaviors

## Safety Assessment

- Crime prevention
- Safety while traveling
  - Sidewalk network
  - Bicycle network
  - Complete streets
  - Maintenance of bike/ped facilities
  - Street safety
  - Lighting

## Draft Recommendations

- Good design
  - Creates safer and welcoming spaces
  - Promote physical activity
- Crime Prevent through Environmental Design
  - Deterring criminal behavior through design decisions

Gateway Corridor Health Impact Assessment

GATEWAY CORRIDOR

## Crime Prevention through Environmental Design



- Large windows promote casual supervision of sidewalk.
- Porches and sidewalk encourage interaction between neighbors.
- Paving and architectural treatments define public and private zones.
- Good pedestrian-scaled lighting on street.
- Low landscaping and fences define property lines without creating hiding places.

Gateway Corridor Health Impact Assessment

GATEWAY CORRIDOR

## Draft Recommendations

- Lights
- Natural surveillance
- Sidewalk network
- Safe crossings

Gateway Corridor Health Impact Assessment

GATEWAY CORRIDOR

## Discussion

- Reactions? Questions?
- Did you learn anything new?
- Do you agree with the draft recommendations?
- Are there obvious exclusions?
- General comments?

Gateway Corridor Health Impact Assessment

GATEWAY CORRIDOR

## HIA Next Steps

- Finish Analysis
- Finalize Recommendations
- Draft and Release Report

Thank you!

Stephanie Souter, Washington County Public Health

[Stephanie.Souter@co.washington.mn.us](mailto:Stephanie.Souter@co.washington.mn.us)

651-430-6701

Hally Turner, Washington County Public Works

[Hally.Turner@co.washington.mn.us](mailto:Hally.Turner@co.washington.mn.us)

651-430-4307