


Health Impact Assessment

GATEWAY CORRIDOR


Saint Paul-Ramsey County Community Health Services Advisory Committee

March 4, 2015

Gateway Corridor Health Impact Assessment 

Today's Agenda

- What is a Health Impact Assessment?
- Gateway Corridor Overview
- Why HIA for the Gateway Corridor?
- Initial discussion of health indicators
- HIA training/scoping workshop – March 2015

Gateway Corridor Health Impact Assessment 

What is a Health Impact Assessment?

- A combination of procedures, methods, and tools by which a policy, program, or project may be judged as to its potential effects on the health of a population, and the distribution of those effects within the population

Gateway Corridor Health Impact Assessment

Why do an HIA?

Health status is determined: 30% by genetics; only 10% by health care; but 60% by social & environmental conditions and behavior

Source: N Engl J Med 2007;357:1221-8.

Gateway Corridor Health Impact Assessment

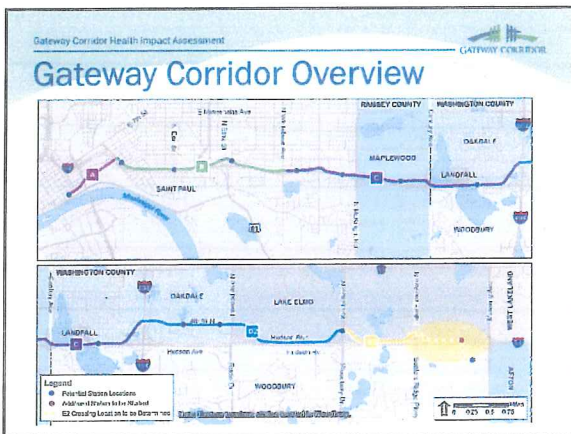
Six Steps to an HIA

- 1. Screening** - to determine if an HIA is useful for a specific project or policy
- 2. HIA Scoping** - identify which health effects to consider (e.g., Health Indicators)
- 3. Assessment** - determine which people may be affected and how they may be affected
- 4. Recommendations** - suggest changes to proposal to promote positive or mitigate adverse health effects
- 5. Reporting** - present the results to decision-makers
- 6. Evaluating** - determine the affect of the HIA on the decision process

Gateway Corridor Health Impact Assessment

Health Impact Assessments

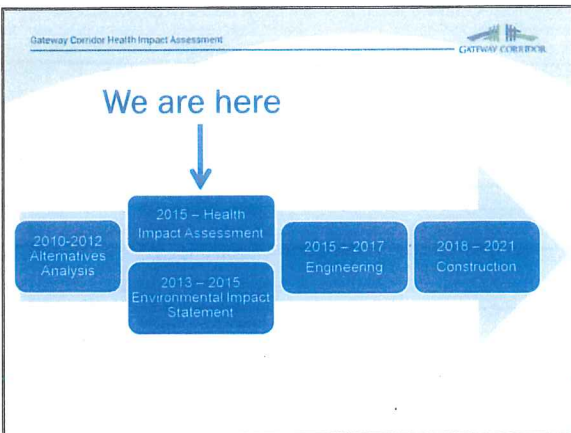
- HIAs in Minnesota: 28 Since 2006
 - Columbia Heights Pedestrian and Bicycle Plan (2006)
 - St. Louis Park Comprehensive Plan (2010)
 - Duluth 6th Ave. Redesign Concept (2010)
 - Bottineau Transitway (2012/2013)
 - Goodhue County Zoning Districts (2014)
 - Grand Marais Highway 61 Corridor (in progress)
 - Met Council TOD Design Process (in progress)



Gateway Corridor Health Impact Assessment

Gateway Corridor Goals:

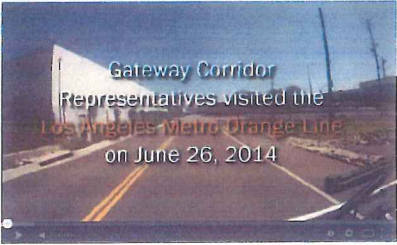
| | | | |
|---|--|--|---|
| <p><i>Improve Mobility</i></p> <p><i>Provide a cost-effective, economically viable transit option</i></p>  | <p><i>Support economic development</i></p>  | <p><i>Protect the natural environmental features of the corridor</i></p>  | <p><i>Preserve and protect individual and community quality of life</i></p>  |
|---|--|--|---|



Gateway Corridor Health Impact Assessment

GATEWAY CORRIDOR

BRT Example: Los Angeles Orange Line




Gateway Corridor
Representatives visited the
Los Angeles Metro Orange Line
on June 26, 2014

Gateway Corridor Health Impact Assessment

GATEWAY CORRIDOR


Bus Rapid Transit



Gateway Corridor Health Impact Assessment

GATEWAY CORRIDOR

Example: Hillsboro, Oregon



1990s: Site planning and zoning entitlements

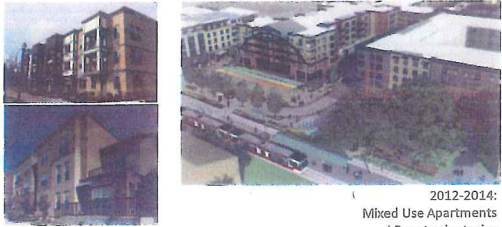
1998: Single-family and attached housing

2002: Town Center
Two and three stories

Gateway Corridor Health Impact Assessment

GATEWAY CORRIDOR

Example: Hillsboro, Oregon



2008: Condos with below-grade parking
Two and three stories

2012-2014: Mixed Use Apartments
Four to six stories

Gateway Corridor Health Impact Assessment

GATEWAY CORRIDOR

What do we want the future to look like?



Gateway Corridor Health Impact Assessment

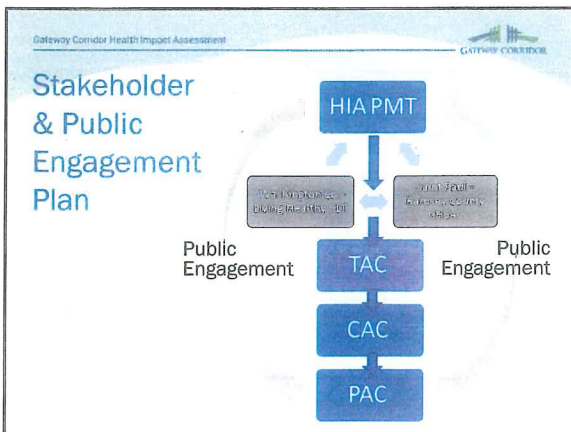
GATEWAY CORRIDOR

Gateway HIA

- Washington County was awarded a grant to prepare an HIA
 - The PEW Charitable Trusts
 - End Date: Expected, December 2015

The grant will focus on developing tools that help inform land use decisions from a public health perspective

- This effort will follow the prescribed HIA steps



Gateway Corridor Health Impact Assessment

Gateway HIA Scoping

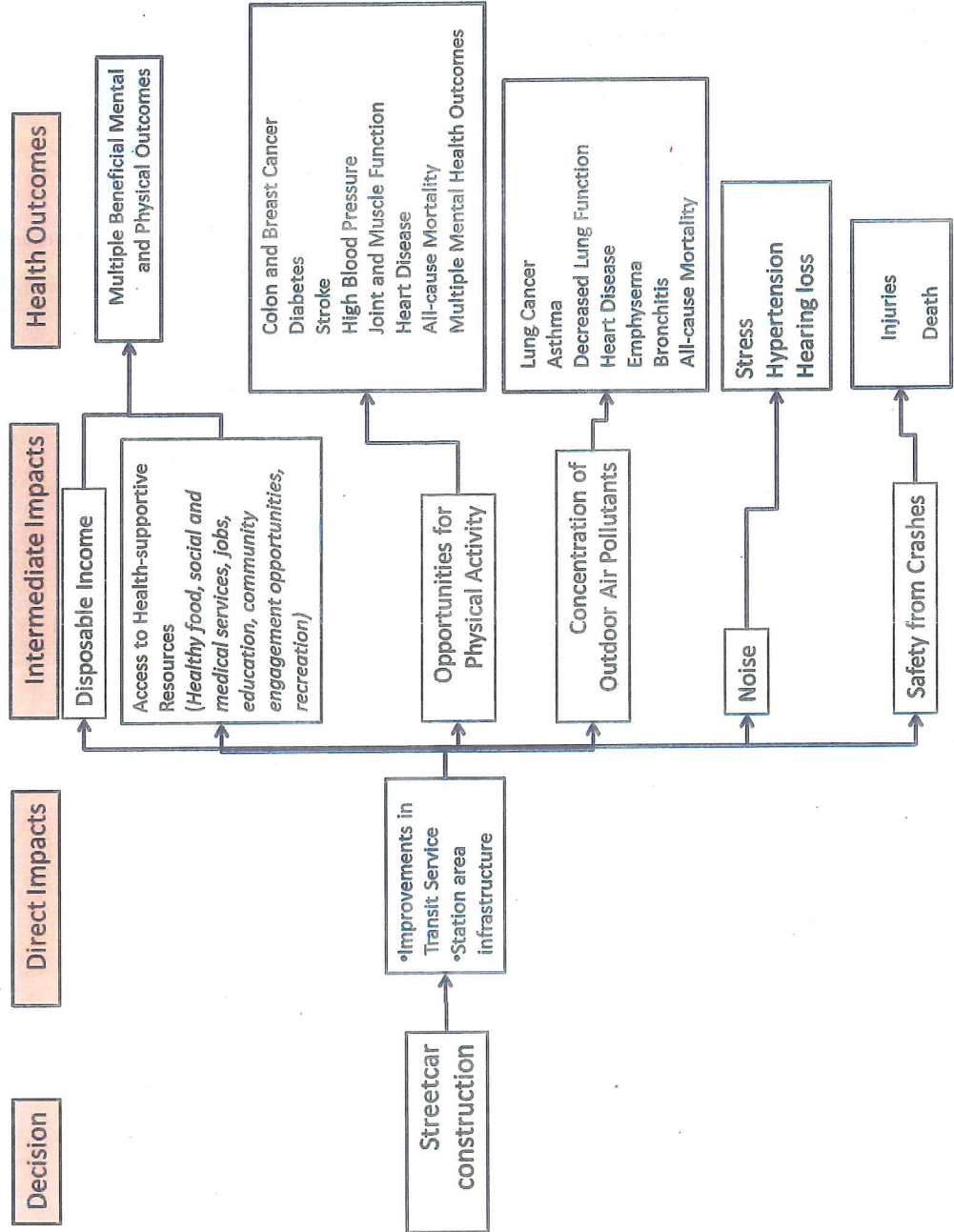
- Goal: Select five “meaningful” Health Indicators that are:
 - Supported by available data sets
 - Supported by stakeholders
 - Supportive of positive land use outcomes from a public health perspective

Gateway Corridor Health Impact Assessment

Health and the Built Environment

| Planning/Design Issues | | Health Issues |
|---|---|---------------------------------|
| • Disconnected Land Use Patterns | ↔ | • Physical Inactivity |
| • Land Fragmentation (Loss of farmland, open space, wetlands, etc...) | ↔ | • Poor Diet & Nutrition |
| • Low Density | ↔ | • Mental Health Issues |
| • Auto Dependency | ↔ | • Decreased Social Capital |
| • Congestion | ↔ | • Poor Air Quality |
| • Trail/Sidewalk Gaps | ↔ | • Increase in Car Crashes |
| • Limited Choices | ↔ | • Increase in Bike/Ped Injuries |
| | | • Poor Water Quality |

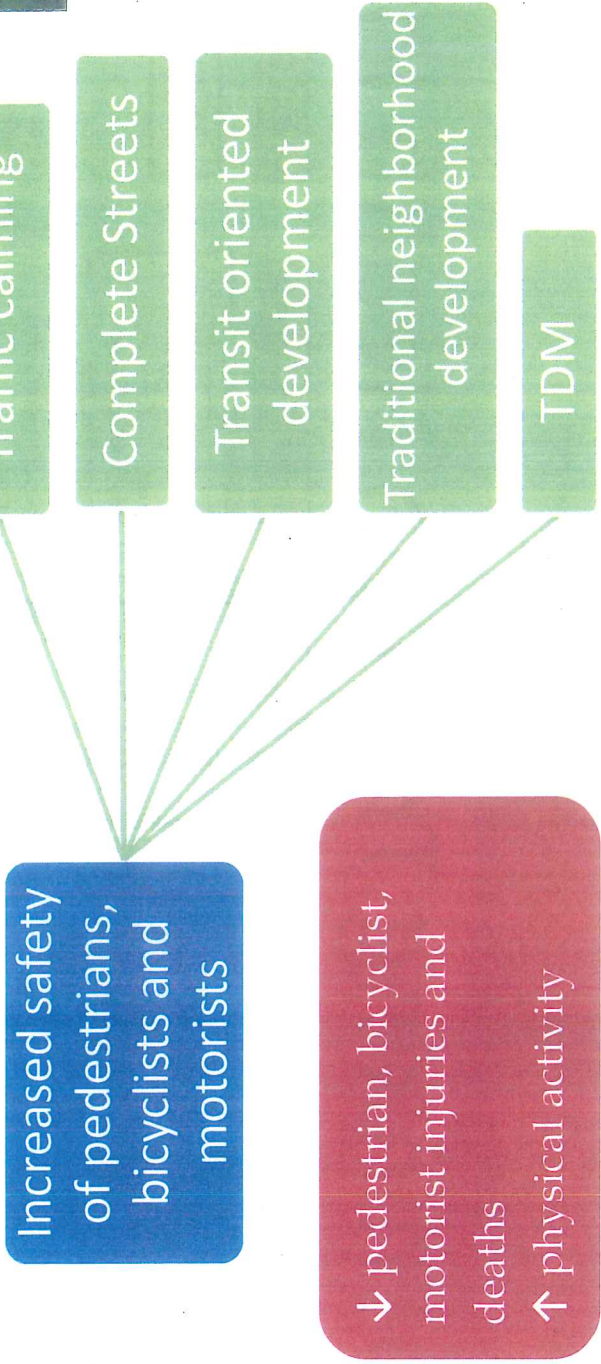
Thinking Through Health Impacts



Thinking Through Health Impacts

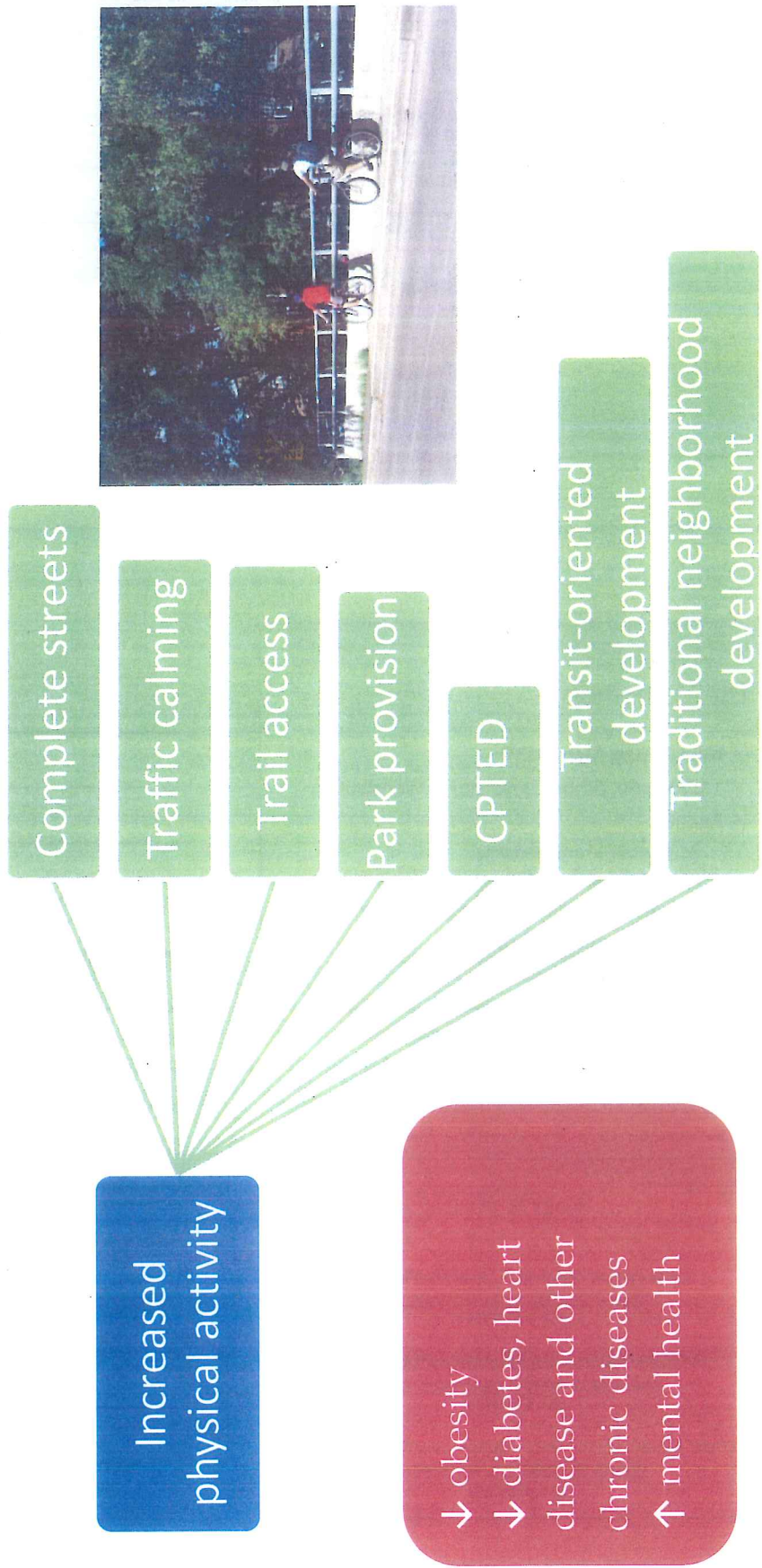



INCREASED SAFETY OF PEDESTRIANS, BICYCLISTS, AND MOTORISTS




Thinking Through Health Impacts

INCREASED PHYSICAL ACTIVITY




Gateway Corridor Health Impact Assessment 

Worksheet Activity

Gateway Corridor Health Impact Assessment 

HIA Workshop

- **Next Friday, March 13th**
- **11:30- 4:00, Globe University in Woodbury**
- **Agenda**
 - Review of HIA and Gateway
 - Review/discussion of community worksheet results
 - Discussion and selection of health indicators
- **Registration link on handout**

Gateway Corridor Health Impact Assessment 

Thank you!

Lyssa Leitner, Washington County Public Works
lyssa.leitner@co.washington.mn.us
651-430-4314

Stephanie Souter, Washington County Public Health
stephanie.souter@co.washington.mn.us
651-430-6701

Cheryl Armstrong, Saint Paul – Ramsey County Public Health
cheryl.armstrong@co.ramsey.mn.us
651-266-1161
