


# Saint Paul – Ramsey County Public Health

## Beat the Heat web page

 **RAMSEY COUNTY**

Home | Site Map | Contact Us

Choose text size: [A](#) | [A](#) | [A](#)

[SHARE](#) [f](#) [t](#) [e](#)

[Text Only: On](#) | [Off](#) | [MySummit](#) | [VTI](#) | [Site Index](#) | [Policies & Practices](#) | [Contact Us](#) | [Home](#)

**Ramsey County Home**

**e-Subscribe**

**Contact Directory**

**Departments**

**Emergency Mgmt Home**

**About Us**

**Contact Us**

**Emergency Managers**

**Emergency Phases**

**Resources and Links**

**Education & Planning**

**Siren Information**

**Volunteer**


[Free Adobe PDF Reader](#)

[Follow RamseyCOEMHS](#)

[Like Ramsey County Emergency Mgmt](#)

**Phone:**  
651-266-1020

[Building Locations](#)



Summer weather has arrived. Hot temperatures and high humidity can combine to create a dangerous situation in which heat illnesses are likely. People are encouraged to check on relatives, neighbors, older adults and other vulnerable community members to ensure they are staying cool and hydrated.

**Simple Steps to Prevent Heat Illness**

- Drink lots of cool, non-alcoholic, non-caffeinated beverages
- Rest
- Avoid strenuous activity outdoors, if you can
- Take a cool shower, bath or sponge bath
- Seek an air-conditioned environment, such as a library or shopping mall
- Wear lightweight clothing
- [Avoiding Heat-Related Illnesses](#) (pdf)

**Cooling Spaces in Ramsey County**

A list of cooling spaces open to the public for use during extreme heat | [Libraries](#) | [Beaches & Pools](#) | [Recreation Centers](#)  
Days, hours and seasons of operation vary by location. Call for more information.

**Resources**

Minnesota Department of Health | [Hot Weather](#)  
Centers for Disease Control | [Extreme Heat](#)

[Return to Emergency Management](#)

# Risk Communication to County Staff

- HP Manager sends all staff email to Department, encouraging them to contact vulnerable clients who may be at risk in extreme heat, as well as informing them what they can do to protect themselves and their family.
- County Manager sends email to all staff in all County Departments, encouraging them to contact vulnerable clients who may be at risk in extreme heat, as well as informing them what they can do to protect themselves and their family.

## Countywide Email from County Manager Julie Kleinschmidt to all County Staff

*Please share this information with others in your department who may not be on Outlook.*

Tuesday, July 3, 2012, 11:50 a.m.

Good morning.

Summer weather has arrived. An Excessive Heat Warning has been issued by the National Weather Service through Thursday night. This means a combination of hot temperatures and high humidity combine to create a dangerous situation in which heat illnesses are likely.

This situation will likely continue for the next few days — including over the holiday. We urge all staff to take steps to protect themselves and their families, and ask that you consider how you might be able to help your friends and neighbors. Also, if your job for the County involves contact with the public, be alert for signs of heat-related illness in those we serve and refer them to the resources below for health and safety tips.

Simple steps you can take (and encourage your neighbors to take) to prevent illness due to extreme heat include:

Drink lots of cool, non-alcoholic, non-caffeinated beverages

Rest

Avoid strenuous activity outdoors, if you can

Take a cool shower, bath or sponge bath

Seek an air-conditioned environment, such as a library or shopping mall

Wear lightweight clothing

The Federal Emergency Management Agency (FEMA) has some great information on heat safety and emergencies at <http://www.ready.gov/heat>. The Centers for Disease Control and Prevention website has excellent resources on prevention of illness due to extreme heat (<http://www.bt.cdc.gov/disasters/extremeheat/>). You may also access these resources through links posted on our Emergency Management and Public Health websites and on the County's home page.

Additionally, our emergency preparedness partner, ECHO (Emergency and Community Health Outreach), currently has a recorded message on how to protect yourself during extreme heat. This recorded message is available in 10 languages. If you know people with Limited English Proficiency, prompt them to call ECHO, toll free, at (888) 883-8831 to get information in the primary languages spoken in Ramsey County.

Julie

Julie Kleinschmidt

Ramsey County Manager

15 West Kellogg Blvd., #250

St Paul, MN 55102

Phone: 651-266-8009

Fax: 651-266-8039

*Working with You to Enhance our Quality of Life*

## Response Actions to Assist the Public in Beating the Heat, week of July 4, 2012

- Web page created for the public to ID publicly operated facilities with air conditioning that would be open in St. Paul during the Fourth of July holiday week. Web page listed facility name, address, and hours of operation for each day.
- Web page created for the public to geo-locate facilities in Ramsey County with air conditioning. Separate pages were searchable for libraries and rec centers.
- Web page created for the public to geo-locate pools and beaches in Ramsey County.

# Saint Paul – Ramsey County Public Health web page- Air Conditioned Rec Centers

The image is a screenshot of a Google Maps interface. On the left side, there is a list of six air-conditioned recreation centers in Saint Paul, Minnesota. Each entry includes a colored pin icon, the name of the center, and its address. The map on the right shows the city of Minneapolis and surrounding areas, with several pins placed on the map corresponding to the locations listed on the left. The Google logo is at the top left, and the search bar is at the top center. The map includes various labels for streets, parks, and landmarks.

Google

Get directions My places

Save to My Places

Explore making custom maps in an [interactive tutorial](#).

**Saint Paul & Ramsey County Cooling Spaces - Recreation Centers**

Days and hours vary by location. Please call for more information.

Public · 110 views  
Created on Aug 30 · By · Updated Oct 4

[Rate this map](#) · [Write a comment](#) · [KML](#)

- Conway  
2090 Conway Street Saint Paul, MN 55119 651.501.6343
- Dayton's Bluff  
800 Conway Street Saint Paul, MN 55106 651.793.3885
- Edgcumbe  
320 South Griggs Street Saint Paul, MN 55105 651.695.3711
- McDonough  
1544 Timberlake Road Saint Paul, MN 55117 651.558.2171
- North Dale  
1414 North Saint Albans Saint Paul, MN 55117 651.558.232
- West Minnehaha  
685 West Minnehaha Avenue Saint Paul, MN 55104 651.29
- White Bear Lake Sports Center  
1328 County Road 96, Saint Paul, MN 55110 651.429.8571

Map data ©2012 Google - [Edit in Google Map Maker](#) [Report a problem](#)



# Saint Paul – Ramsey County Public Health web page- Libraries

The screenshot shows a Google Maps interface. At the top, the Google logo is on the left, a search bar in the center, and a 'in' dropdown on the right. Below the search bar are buttons for 'Get directions', 'My places', and a 'Save to My Places' link. A text box says 'Explore making custom maps in an [interactive tutorial](#).' Below this is the title 'Saint Paul & Ramsey County Cooling Spaces - Libraries' followed by the text 'Days and hours vary by location. Please call for more information.' and metadata: 'Public · Open Collaboration · 162 views · Created on Aug 29 · By · Updated Oct 5'. There are links to 'Rate this map', 'Write a comment', and 'KML'. A list of libraries is on the left, each with a blue location pin icon. The map on the right shows Saint Paul and surrounding areas like Anoka, Champlin, Coon Rapids, Blaine, and Minneapolis. Blue location pins are placed on the map corresponding to the library locations. A scale bar at the bottom left indicates 2 miles and 5 kilometers. Map data is from 2012.

**Saint Paul & Ramsey County Cooling Spaces - Libraries**  
Days and hours vary by location. Please call for more information.  
Public · Open Collaboration · 162 views · Created on Aug 29 · By · Updated Oct 5  
[Rate this map](#) · [Write a comment](#) · [KML](#)

- Roseville Library**  
2180 Hamline Avenue North Roseville, MN 55113 651.628.6
- Maplewood Library**  
3025 Southlawn Drive Maplewood, MN 55109 651.724.6003
- Mounds View Library**  
2576 County Road 10 Mounds View, MN 55112 651.724.600
- New Brighton Library**  
400 10th Street Northwest Saint Paul, MN 55112 651.724.6
- North Saint Paul Library**  
2300 N Saint Paul Road North Saint Paul, MN 55109 651.724.6005
- Shoreview Library**  
4570 Victoria Street North Shoreview, MN 55126 651.486.2
- White Bear Lake Library**  
4698 Clark Avenue White Bear Lake, MN 55110 651.724.60
- Arlington Hills Library**

# Saint Paul – Ramsey County Public Health web page- Beaches and Pools

Google

Get directions My places

Save to My Places

Explore making custom maps in an [interactive tutorial](#).

**Saint Paul & Ramsey County Cooling Spaces - Beaches & Pools**

Days, hours and seasons of operation vary by location. Please call or check the website for more information.

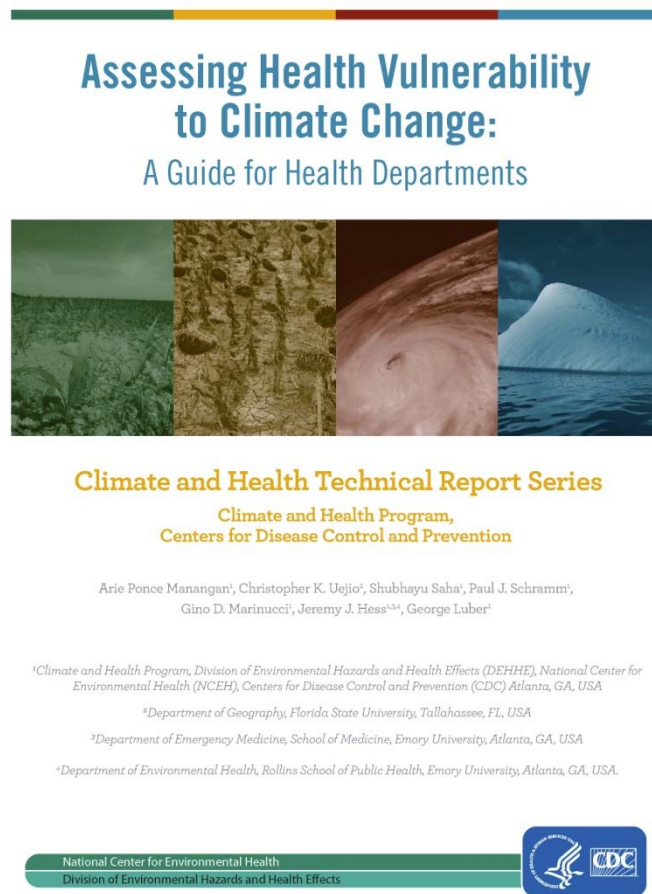
Public · 56 views  
Created on Aug 30 · By · Updated Oct 5

[Rate this map](#) · [Write a comment](#) · [KML](#)

- Tony Schmidt Regional Park**  
3500 Lake Johanna Blvd Arden Hills, MN 55112  
<https://parks.co.ramsey.mn.us/park/Pages/Beaches.aspx>
- Lake Josephine County Park**  
3027 Lexington Avenue North Roseville, MN 55113  
<https://parks.co.ramsey.mn.us/park/Pages/Beaches.aspx>
- McCarrons Lake County Park**  
1795 North Rice Street Roseville, MN 55113  
<https://parks.co.ramsey.mn.us/park/Pages/Beaches.aspx>
- Snail Lake Regional Park**  
4191 Snail Lake Boulevard Shoreview, MN 55126  
<https://parks.co.ramsey.mn.us/park/Pages/Beaches.aspx>
- Lake Gervais County Park**  
2520 Edgerton Street Little Canada, MN 55117  
<https://parks.co.ramsey.mn.us/park/Pages/Beaches.aspx>
- Lake Ojawa County Park**

Map data ©2012 Google - [Edit in Google Map Maker](#) - [Report a problem](#)

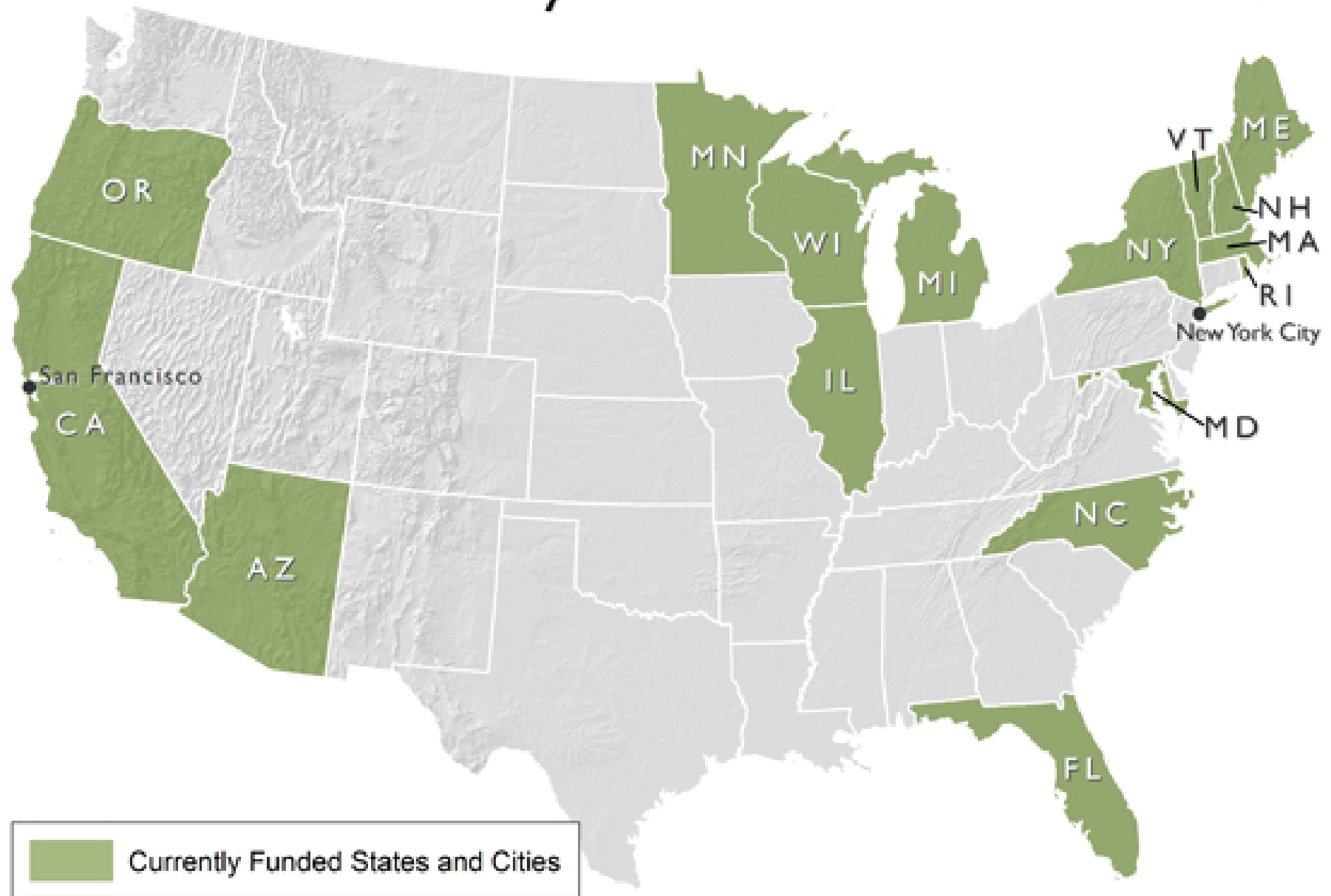
# Ramsey County Vulnerability Assessment



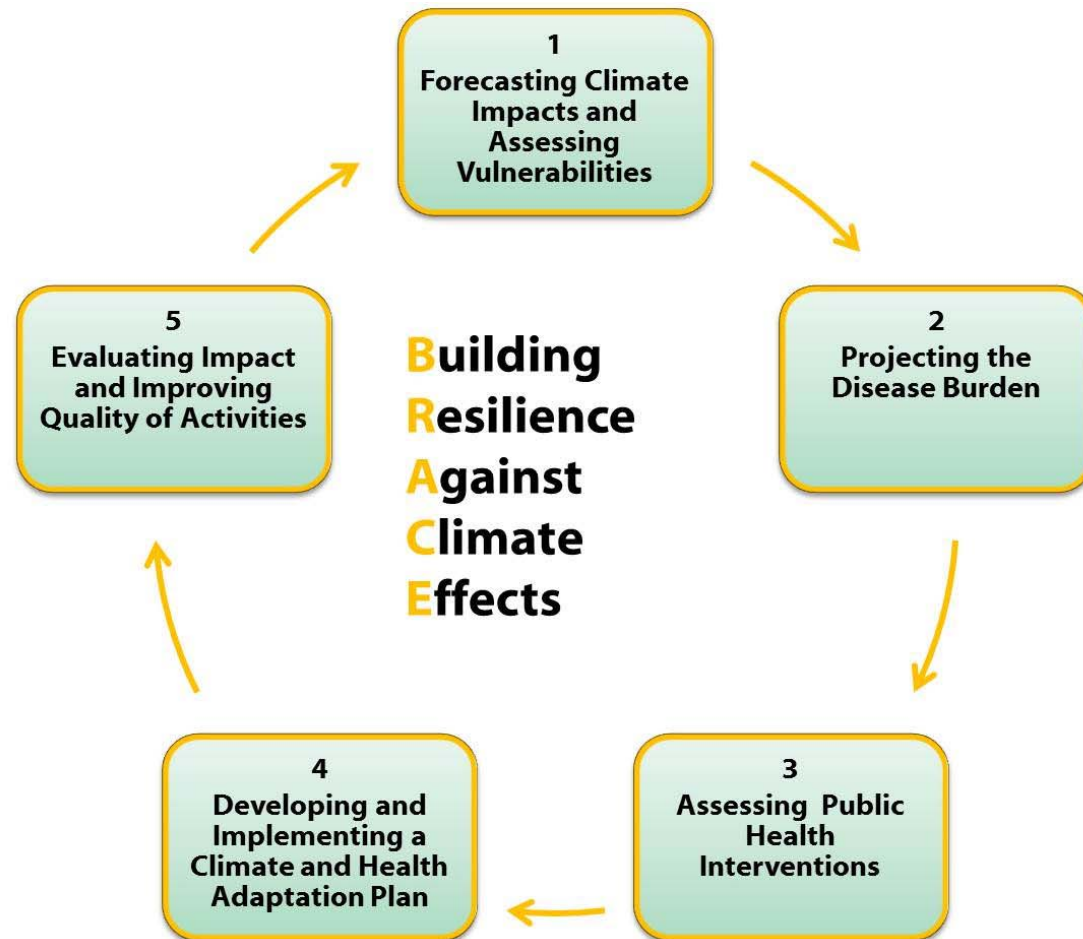
*The value of a vulnerability assessment is that it allows health departments to understand the people and places in their jurisdiction that are more susceptible to adverse health impacts associated with the climate-related exposures modified by climate change. This assessment of people and place vulnerability can then be used to implement more targeted public health action to reduce harm to people.*



# CDC Climate Ready States and Cities Initiative



# The *BRACE* Framework



# Vulnerability

*"[The] characteristics of a person or group that influence their capacity to anticipate, cope with, resist, and recover from the impact of a natural hazard."*

– MDH Climate Change Vulnerability Assessment

- Temporary
- Situational
- Broad



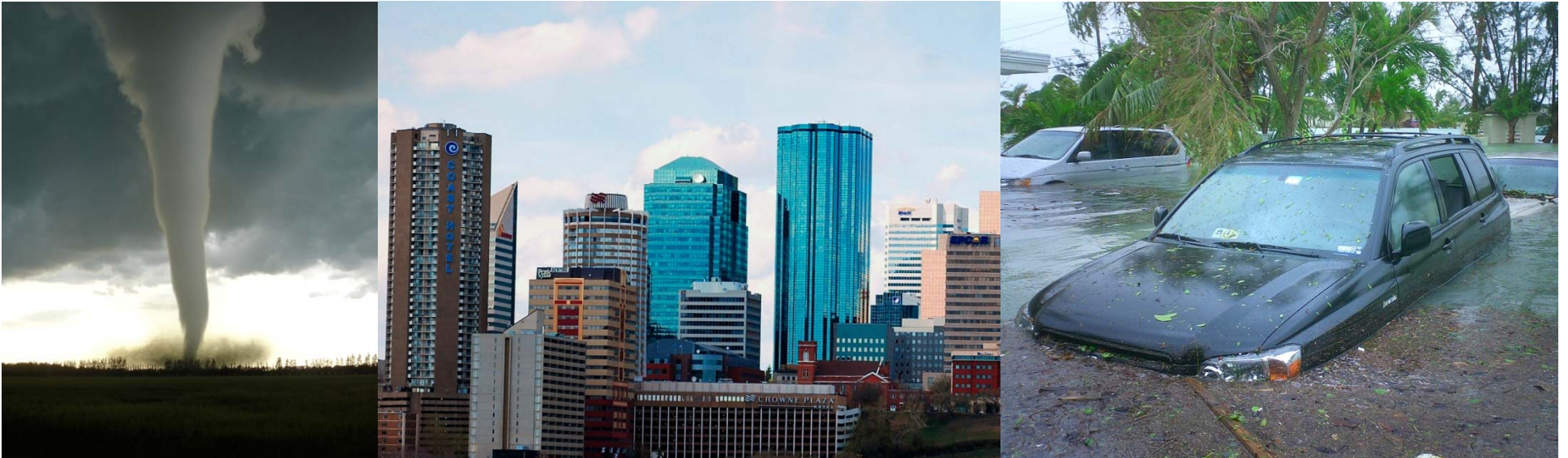
# Risk

*“[The] probability that a natural disaster or weather event related to climate change will occur at a particular location.”*

*OR*

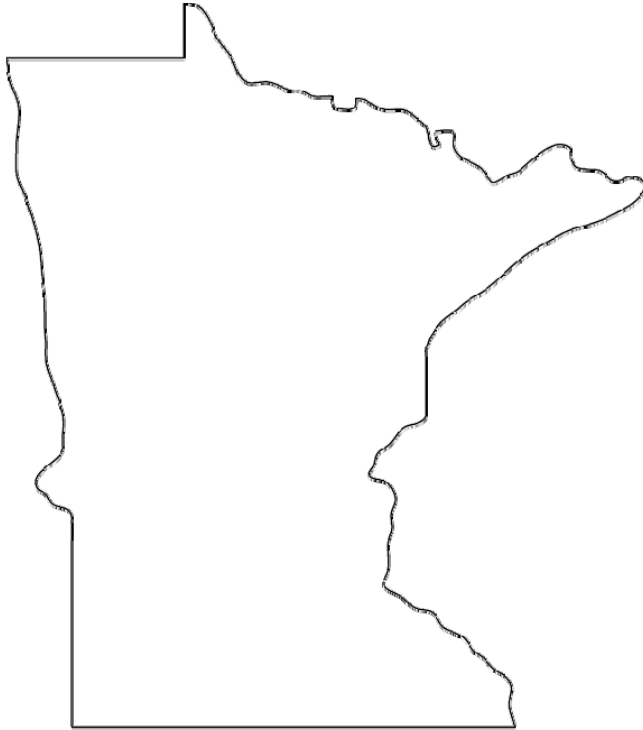
*“The probability that a person or group of persons... is located in the path of a hazard (e.g. a flood prone area).”*

*– MDH Climate Change Vulnerability Assessment*





# Strategic Planning and Risk Assessment



- **Big Changes**

- Climate
  - *More severe weather*
  - *Hotter*
- Bigger population
  - *MN Experiences annual growth*

- **We have to be ready!**

- Lots of other places and groups are...

*The state of California, the State of Minnesota, Los Angeles and Fresno Counties, Royal Dutch Shell, and many more...*