



RAMSEY COUNTY

Ramsey County Board Workshop:

2019 – 2023 Transportation Improvement Program (TIP)

Economic Growth and Community Investment Team and Public Works

February 5, 2019

Estimated Start: 10:15 a.m.

220 Courthouse, Large Conference Room

Agenda

1. 2019-2023 Transportation Improvement Program

Ted Schoenecker
Director

Public Works Transportation Improvement Program Annual Report

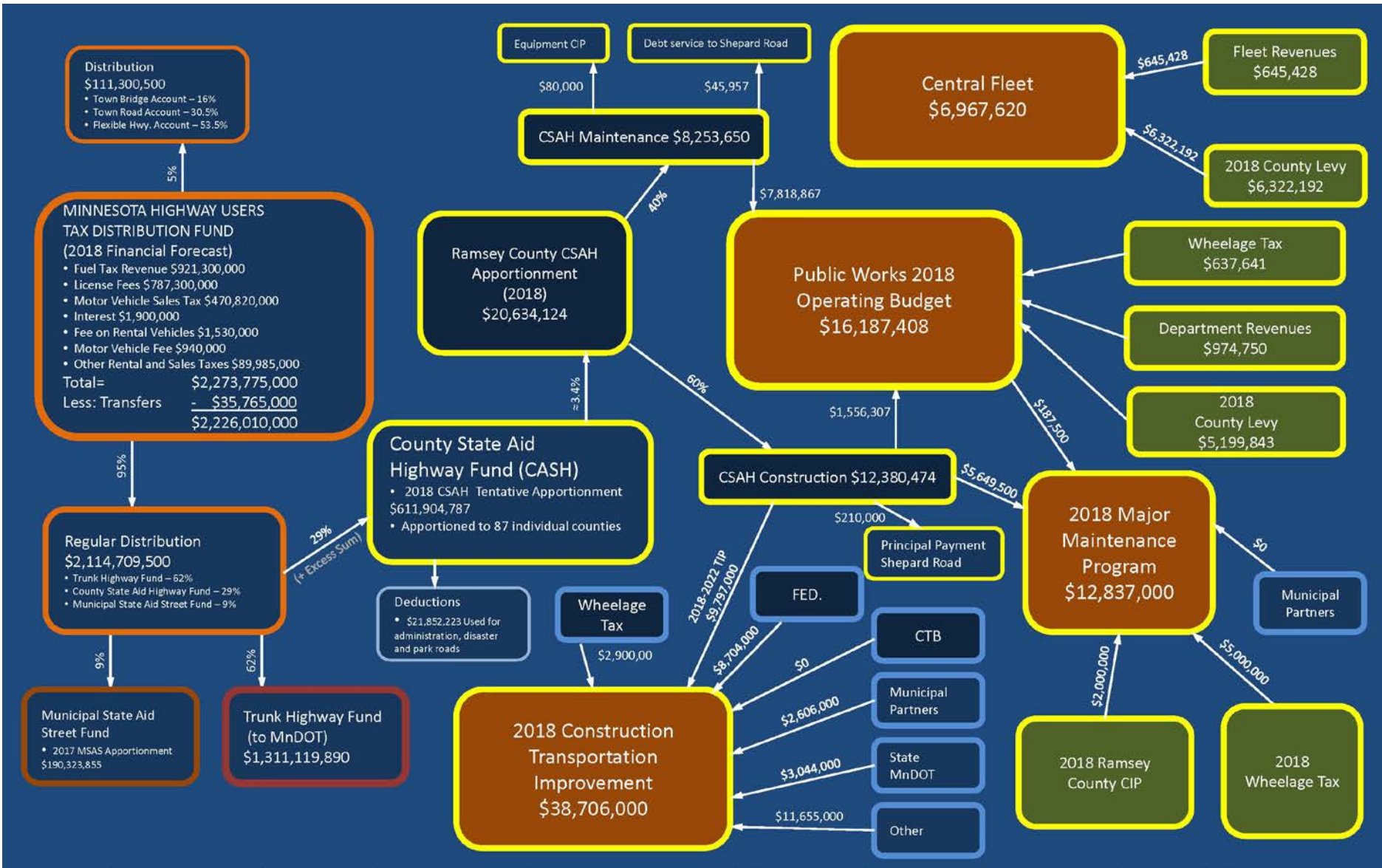
February 5, 2019
County Board Workshop

Agenda

- 1) Introduction
- 2) 2018 Recap of Projects
- 3) 2019 Projects for Construction
- 4) 2020-2023 Projects in Development
- 5) Themes/Direction

Roadway System Overview

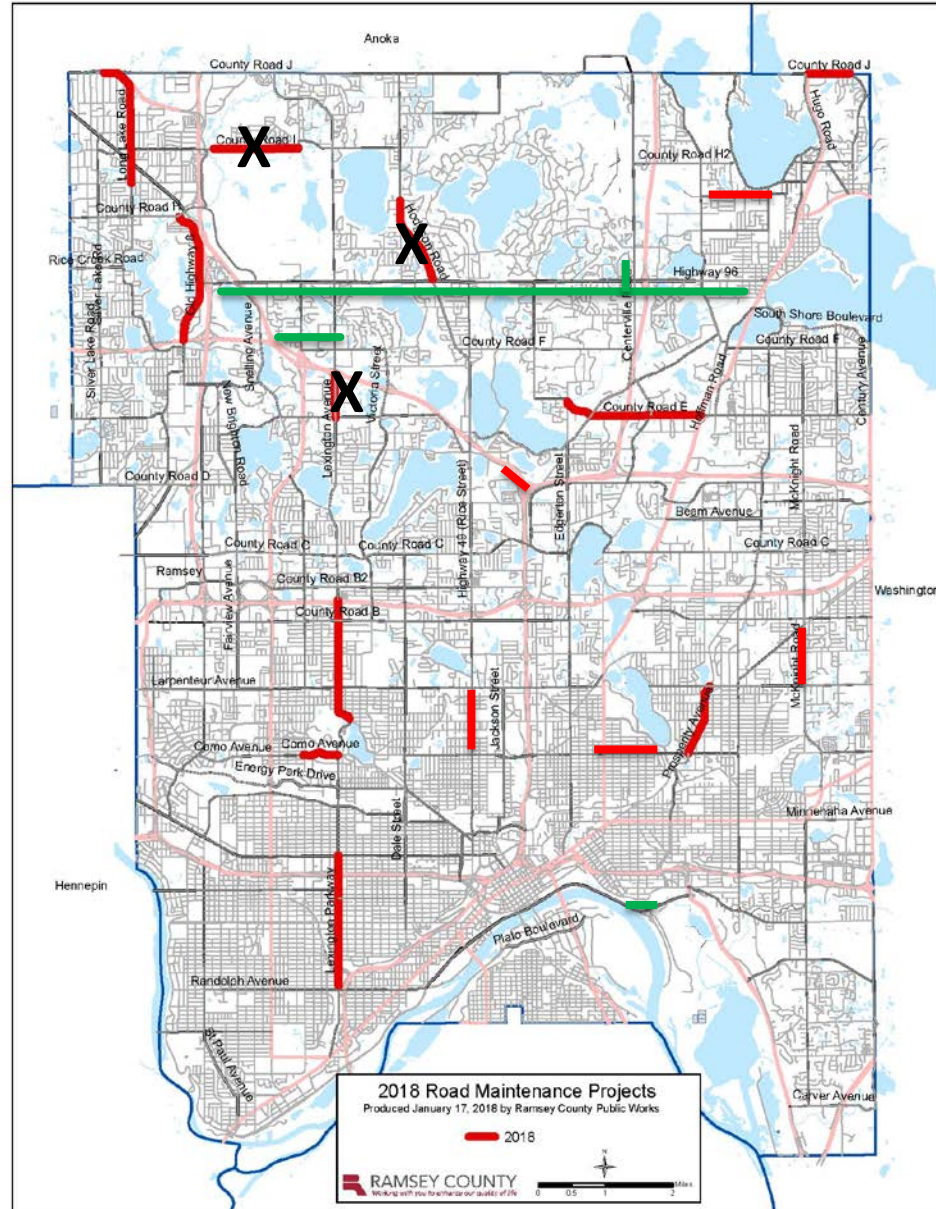
- 293 centerline miles of roadway of the County system
 - Average Daily Traffic (ADT) ranges from 100 to 34,000+ vehicles per day (vpd)
 - Average ADT 9,500 vpd
 - 842 lane miles
- 142 bridges
- Over 30,000 signs
- 365 signal systems
- Over 9,000 drainage structures/systems



Transportation Improvement Program (TIP) 2018 Funding (1 Year)

- County State Aid Highway (CSAH) Construction – \$12,400,000
- Wheelage Tax – \$7,900,000
- Capital Improvement Program (CIP) Bond – \$2,000,000
- Cities – Approx. 10-15% of construction cost (from cost participation policy)
- State – Varies
- Other – Varies
 - Federal
 - Watershed

2018 Recap of Projects



2018 Recap of Projects

Major Maintenance

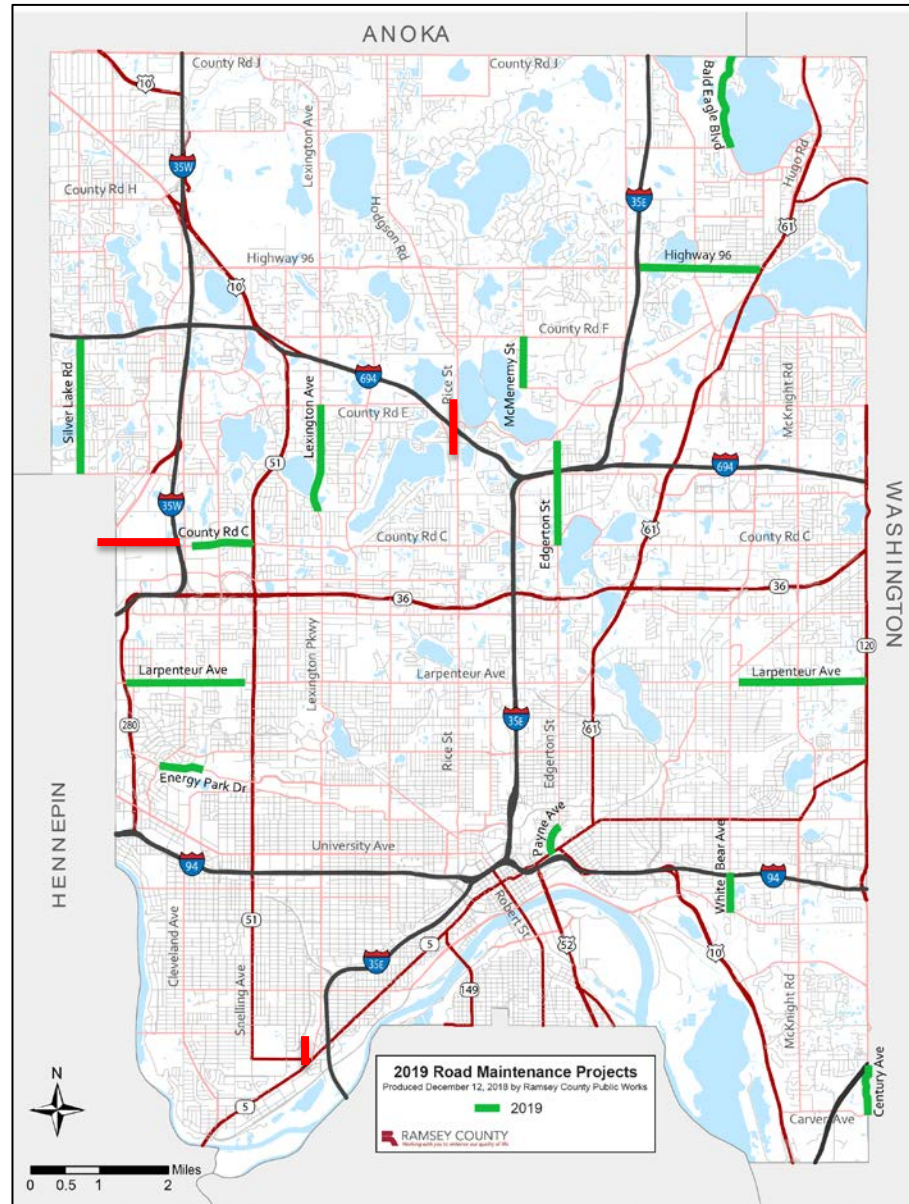
- 15 separate locations
- 15.7 miles resurfaced
- 4 roads striped with bike lanes (4.1 miles)
 - Como Ave;
Lexington Pkwy;
Prosperity Ave; Long
Lake Rd
- 8 accessible pedestrian signal (APS) systems
- 160 pedestrians ramps (ADA accommodations)

Reconstruction

- County Rd F @ Land 'O Lakes
 - 3-lane, traffic signal
- CSAH 96 - entire length
 - Signal coordination, flashing yellow arrows, ADA ramps
- Centerville Rd north of CSAH 96
 - Turn lanes and signal
- Warner Bridge rehabilitation



2019 Major Maintenance and Construction Projects



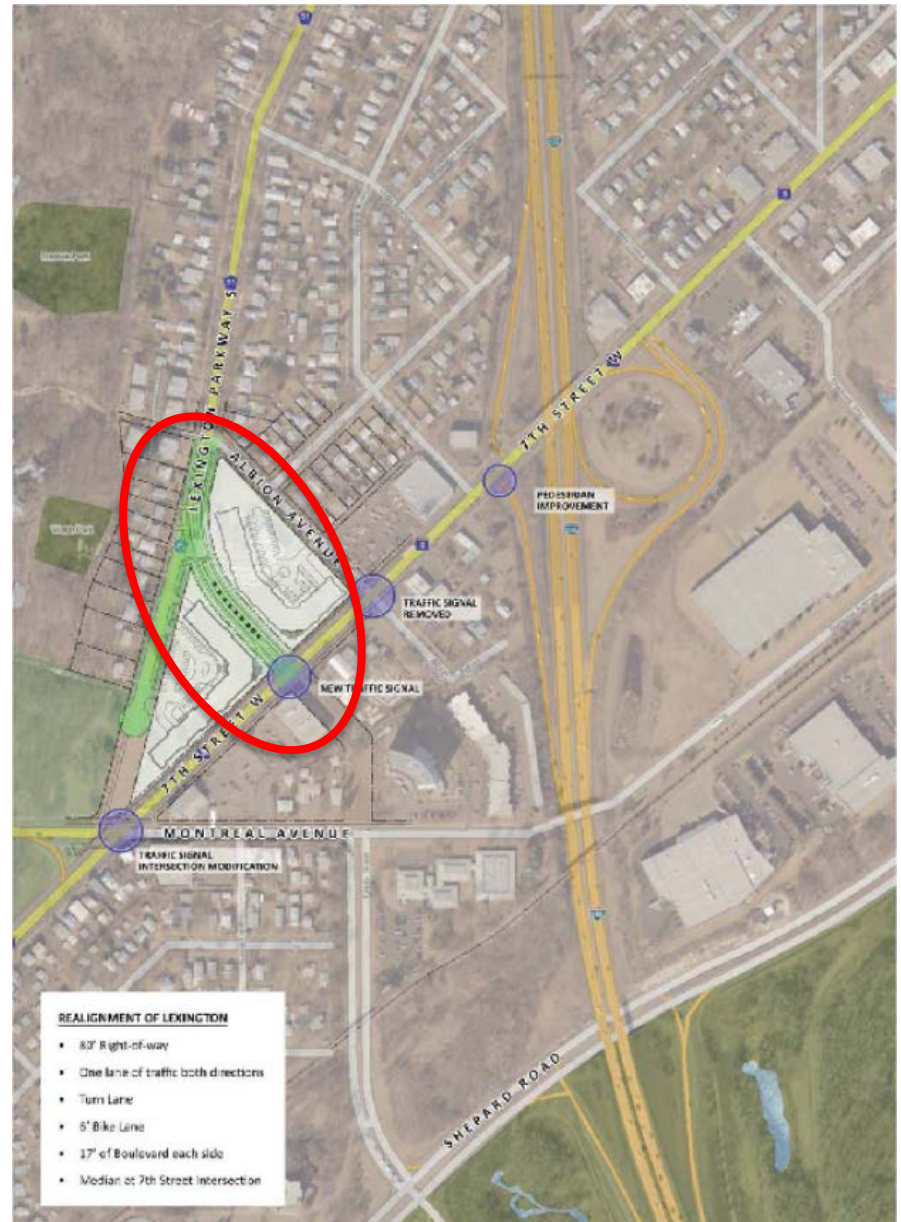
Rice Street/I-694 Interchange Reconstruction Arden Hills/Little Canada/Shoreview



County Road C- Highway 88 to Long Lake Road Roseville/St Anthony



Lexington Pkwy Realignment at W. 7th St St Paul



Major 2019-2023 TIP Additions

- Lexington Parkway – St Paul
 - Roadway extension between Shepard Rd and W 7th St
 - Selected to receive federal funds
- County Road J at I-35E – White Bear Lake
 - Interchange Reconstruction
- Hodgson Rd – Shoreview
 - Reconstruction and trail/sidewalk from Gramsie Rd to Hwy 96
- South Shore Trail – White Bear Lake and White Bear Twsp
- Cooperative Traffic Signal Projects with Cities
 - Minnehaha Ave at Western Ave
- Cooperative Sidewalk Projects with Cities
 - Cleveland Ave, Edgerton St, Larpenteur Ave, Marshall Ave, Upper Afton Rd
- Cooperative Trail Projects with Cities
 - Plato Blvd, County Rd E, White Bear Ave, Highway 96

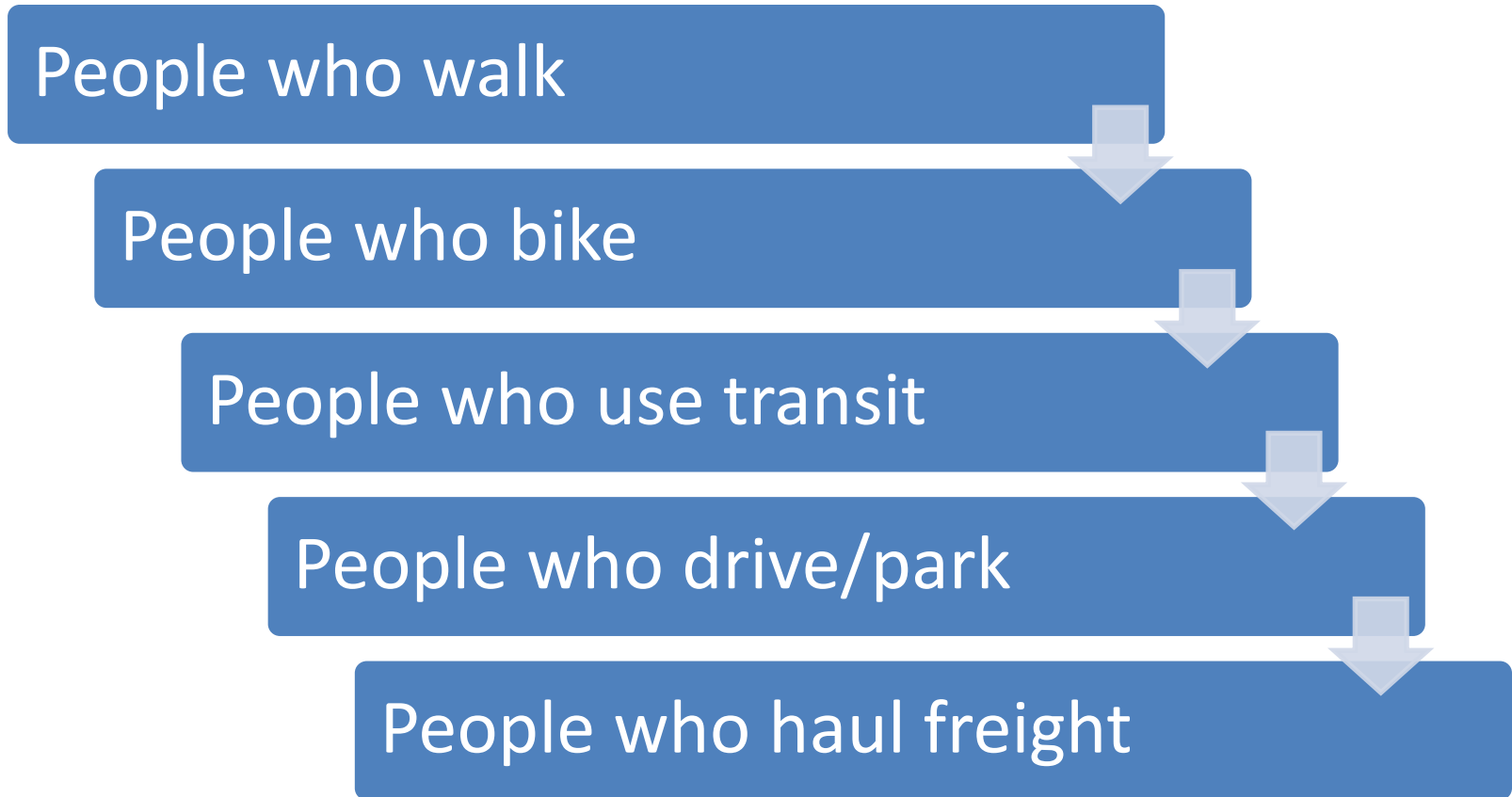
Themes / Direction

- All Abilities Transportation Network (AATN)
- Safety
- Engagement / Racial Equity
- Integrated Planning

All Abilities Transportation Network (AATN) Purpose and Core Principles

1. Shared Vision and Implementation Strategy
2. Applies to all Transportation Corridors/Projects
3. Equitable Access to People of all Abilities
4. Safety for all Network Users
5. Integrated and Fully Interconnected
6. Align with Comprehensive Planning
7. Sensitivity to Environment and Context
8. Meaningful Engagement with Communities
9. Hierarchy of Prioritized Transportation System Users
10. Applicable Standards and Best Practices

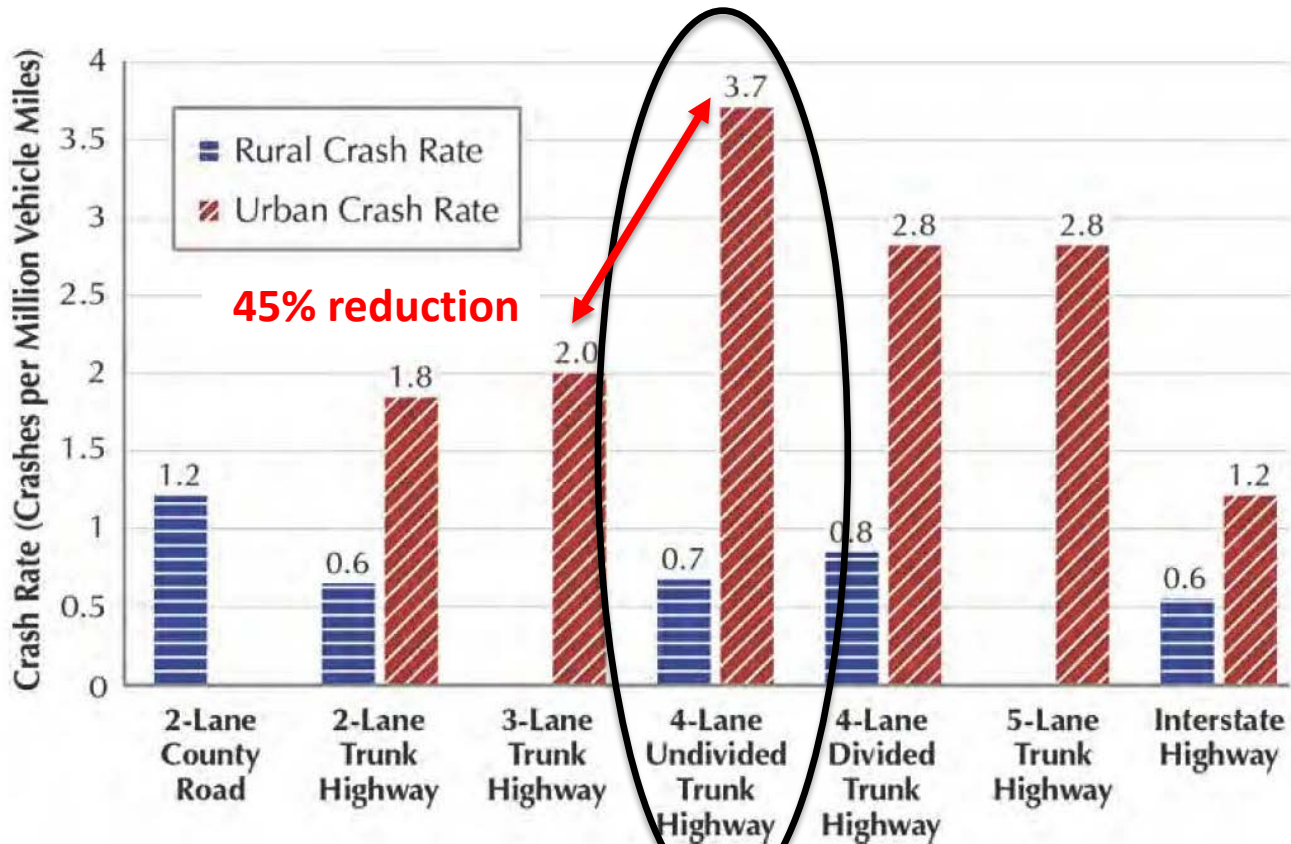
Hierarchy of Prioritized Users



Safety

- Public Works Performance Measure
 - Reduce severe and fatal crashes on roads within the county
- Ramsey County: County Highway Safety Plan
 - Developed in 2013
 - Identified reactive safety improvements
 - Primarily left turn lanes at intersections
 - Identified proactive safety improvements
 - Blue light installations on traffic signals – red light running enforcement
 - 4-lane to 3-lane conversions
 - Pedestrians - countdown timers, advanced walk symbol, medians, curb extensions

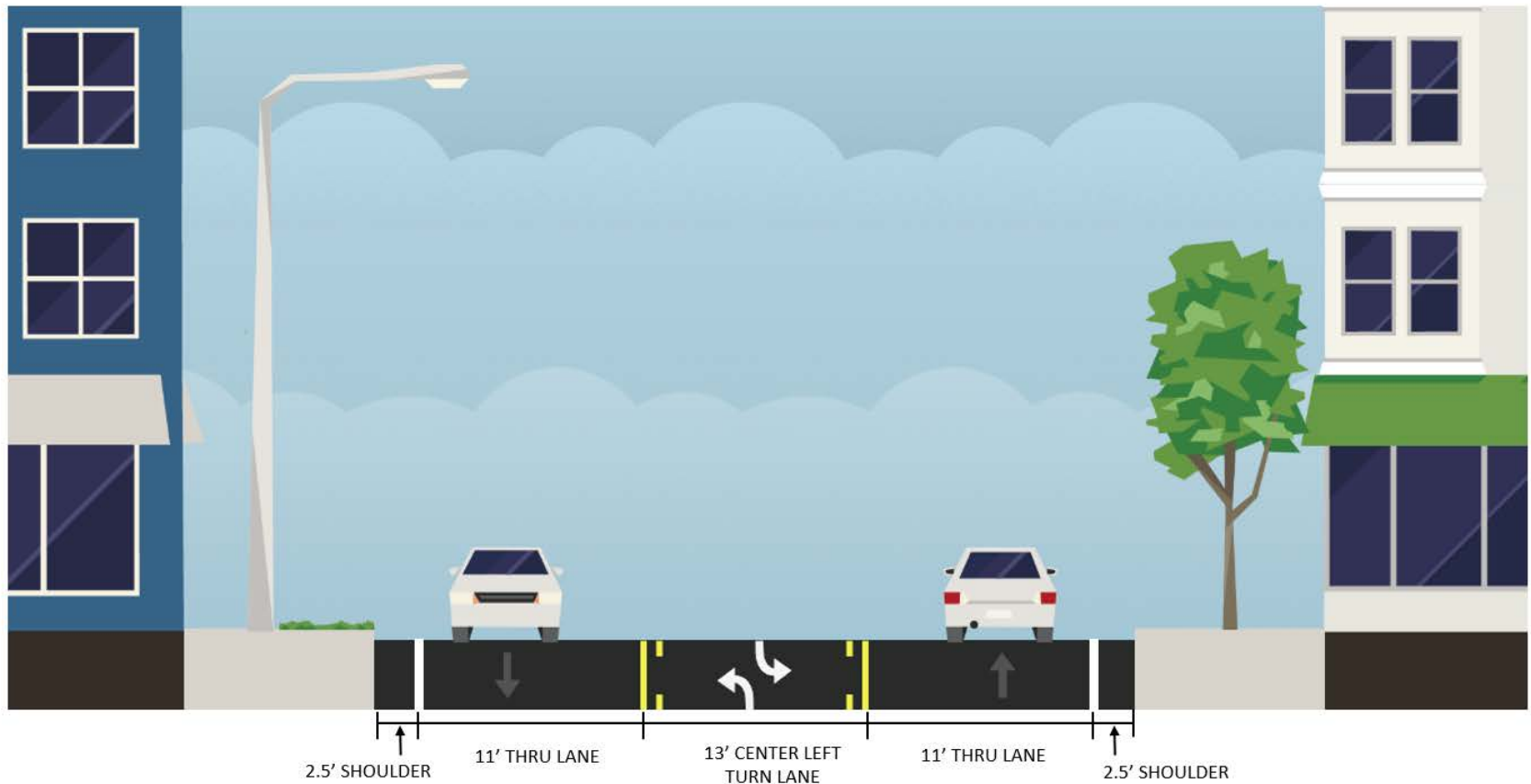
Safety – 4-lane to 3-lane Conversions: 45% Crash Rate Reduction



Minnesota County Road Safety Plans, Data 2007-2011
2013 MnDOT Crash Data Toolkit, 2009-2013

Maryland Avenue 4- to 3-Lane Conversion: Payne Ave to Johnson Pkwy

MARYLAND AVENUE
PROPOSED 3 LANE WITH CENTER LEFT TURN LANE



Safety – 4-lane to 3-lane Conversion

- Outcomes from Maryland Ave Trial (9 months)
 - Speeds – reduced 3-4 mph
 - Severe crashes – reduced by 5
 - Congestion – increase at Arcade in PM but not significant
 - Pedestrian refuge medians in two locations
 - Predictable / peace of mind
- Extending trial on Maryland Ave from Payne Ave west to Arkwright Ave in 2019

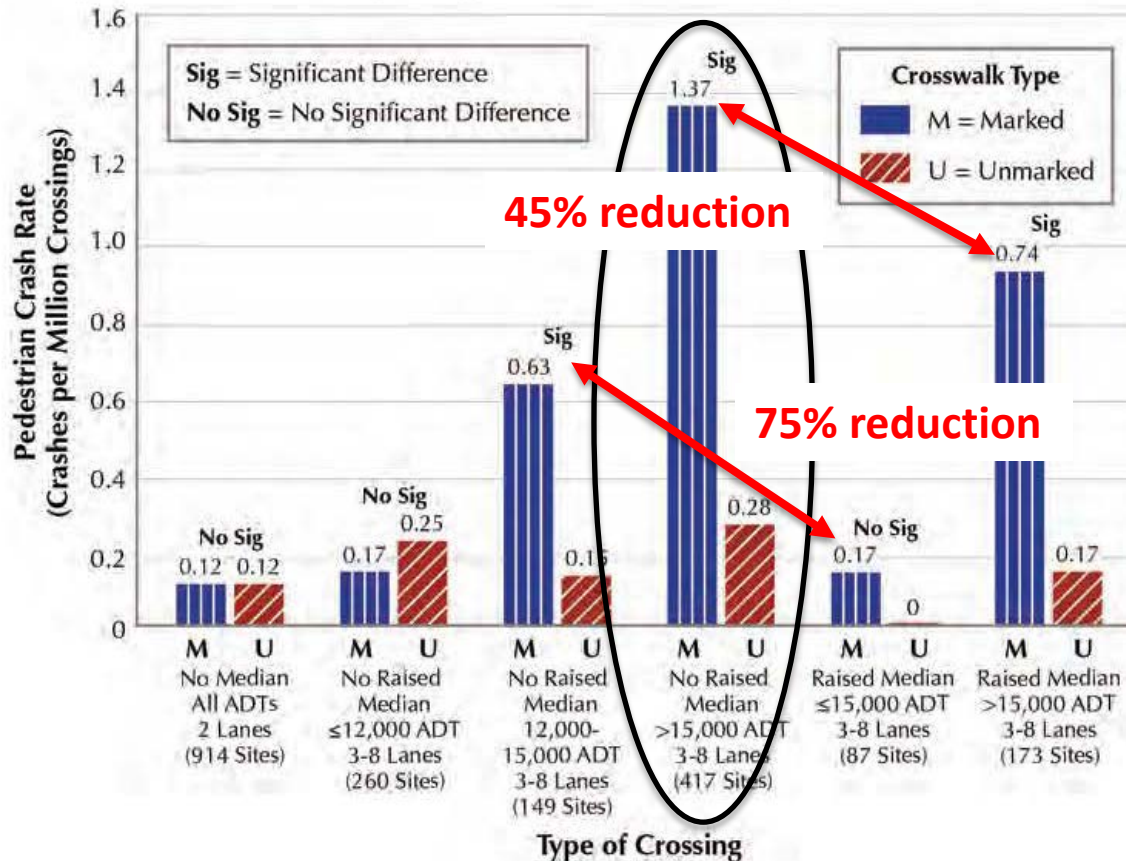
Safety - Pedestrians

- Public Works Performance Measure
 - Invest 15-20% of construction funding towards pedestrian and bicyclist infrastructure
- St Paul Pedestrian Plan
 - Partnership with city.
 - County roads identified as key issue.
- Federal Highway Administration (FHWA) Guidance for Pedestrian Crossing Treatments
- Ramsey County PW - Identify Priority Pedestrian Crossing Locations
 - Develop criteria
 - Be proactive

Safety – 4-lane to 3-lane: Pedestrians

Charles V. Zegeer, et al., *Safety Effects of Marked vs. Unmarked Crosswalks at Uncontrolled Locations: Executive Summary and Recommended Guidelines, 1996-2001* (www.walkinginfo.org/pdf/r&d/crosswalk_021302.pdf)

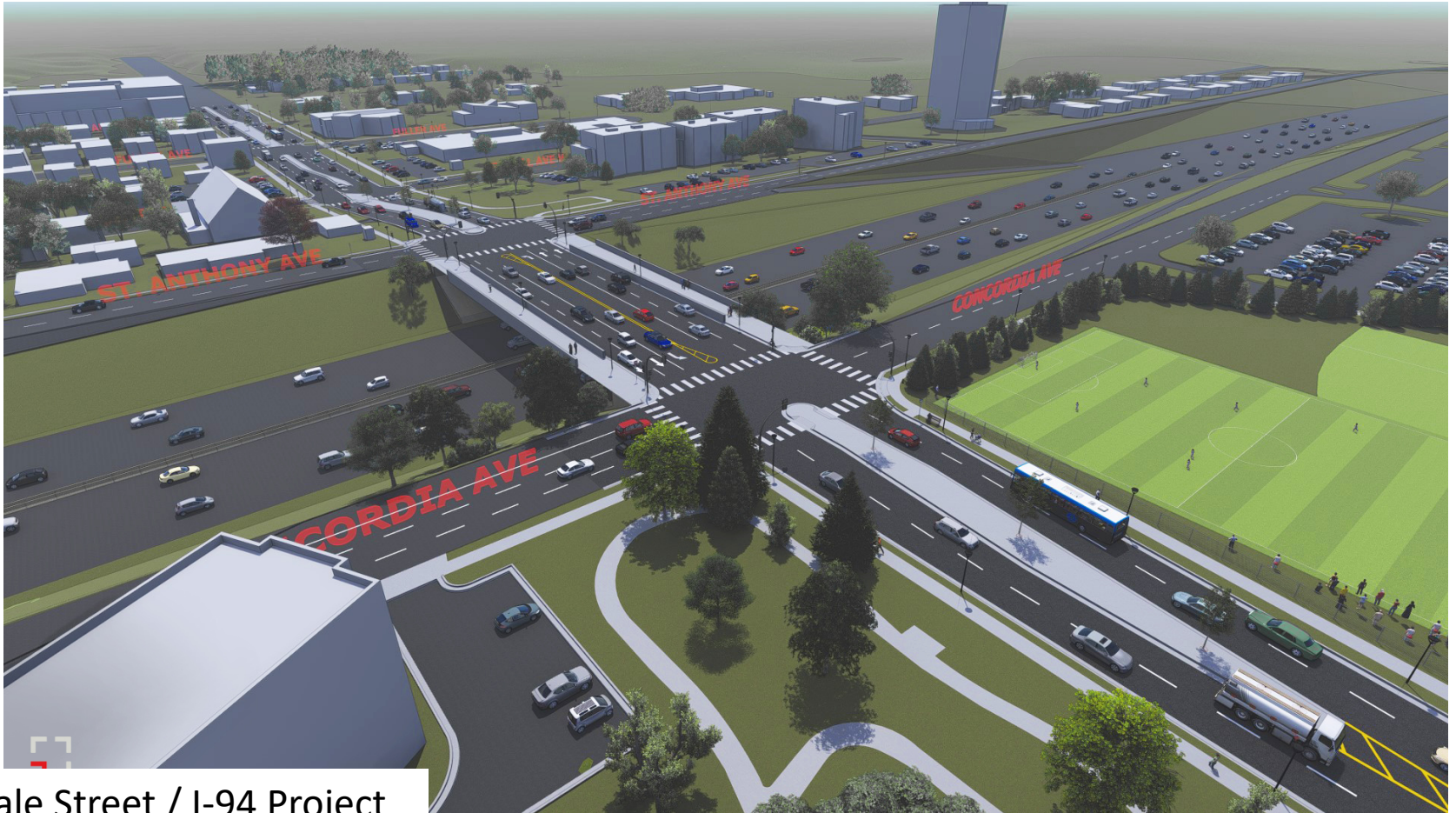
VS.



Safety – 4-lane to 3-lane: Pedestrians

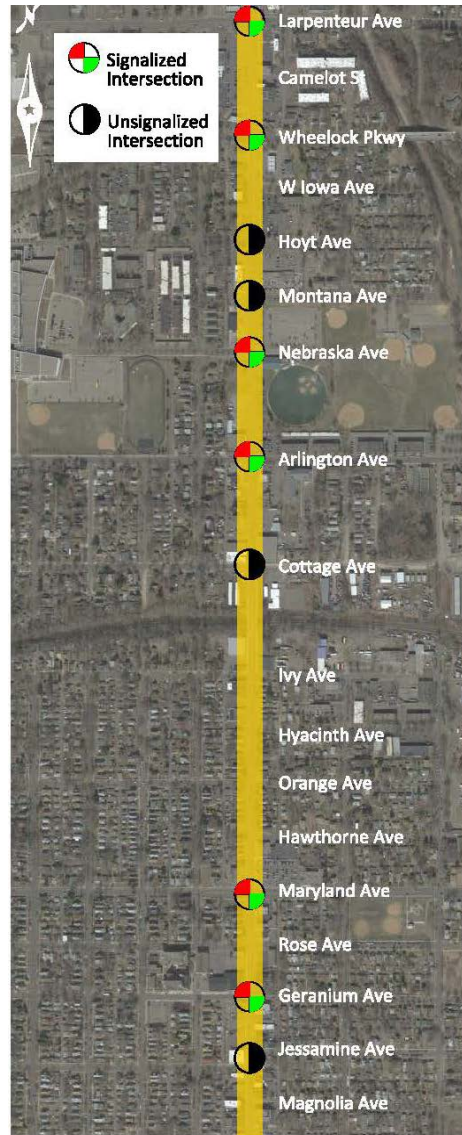
- Data shows adding a marked crosswalk (signs and paint) does not improve safety
 - Actually shows a very negative effect
- However, adding a median with a marked crosswalk, does improve safety
- Conversion to 3-lane roads allows medians

Community Engagement / Racial Equity



Dale Street / I-94 Project

Rice Street St Paul to North

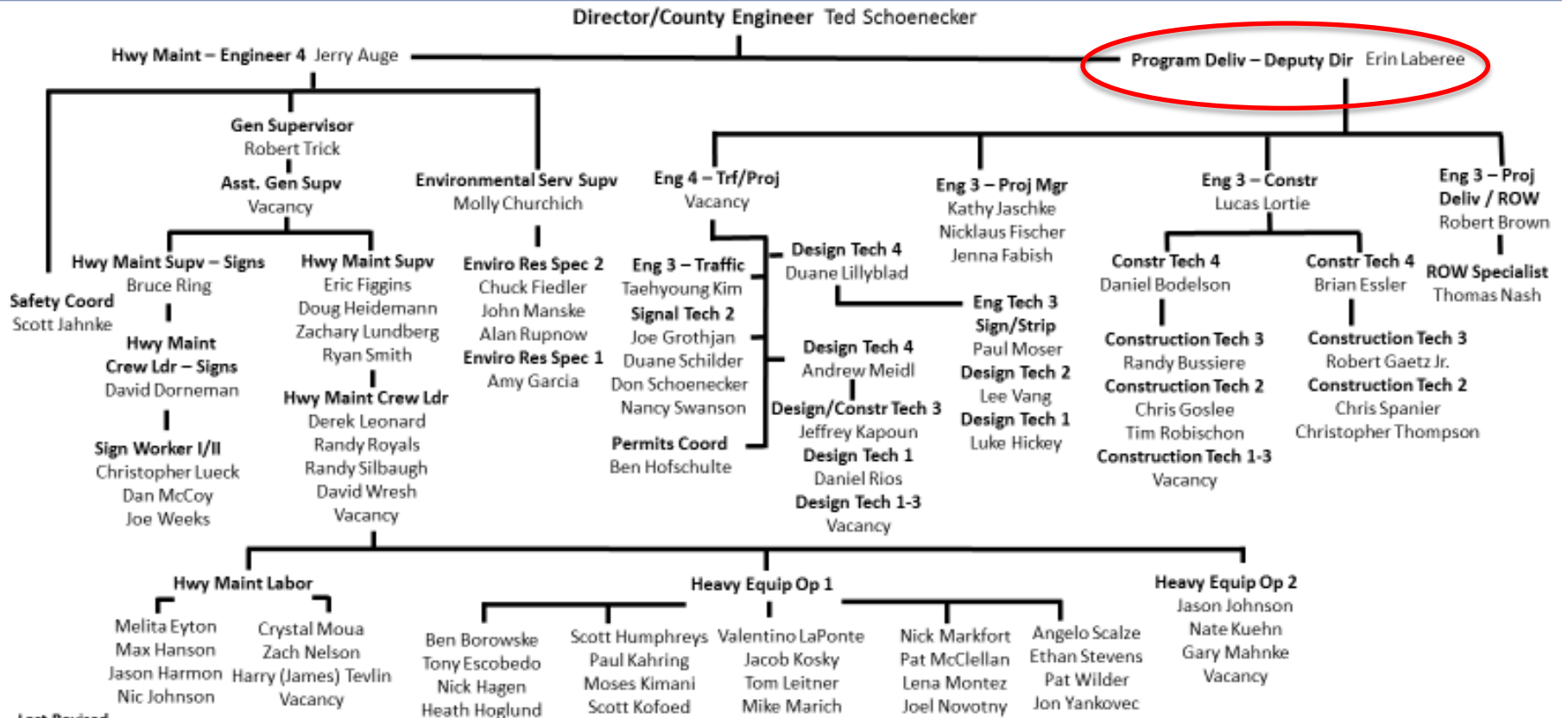


--- MATCHLINE ---



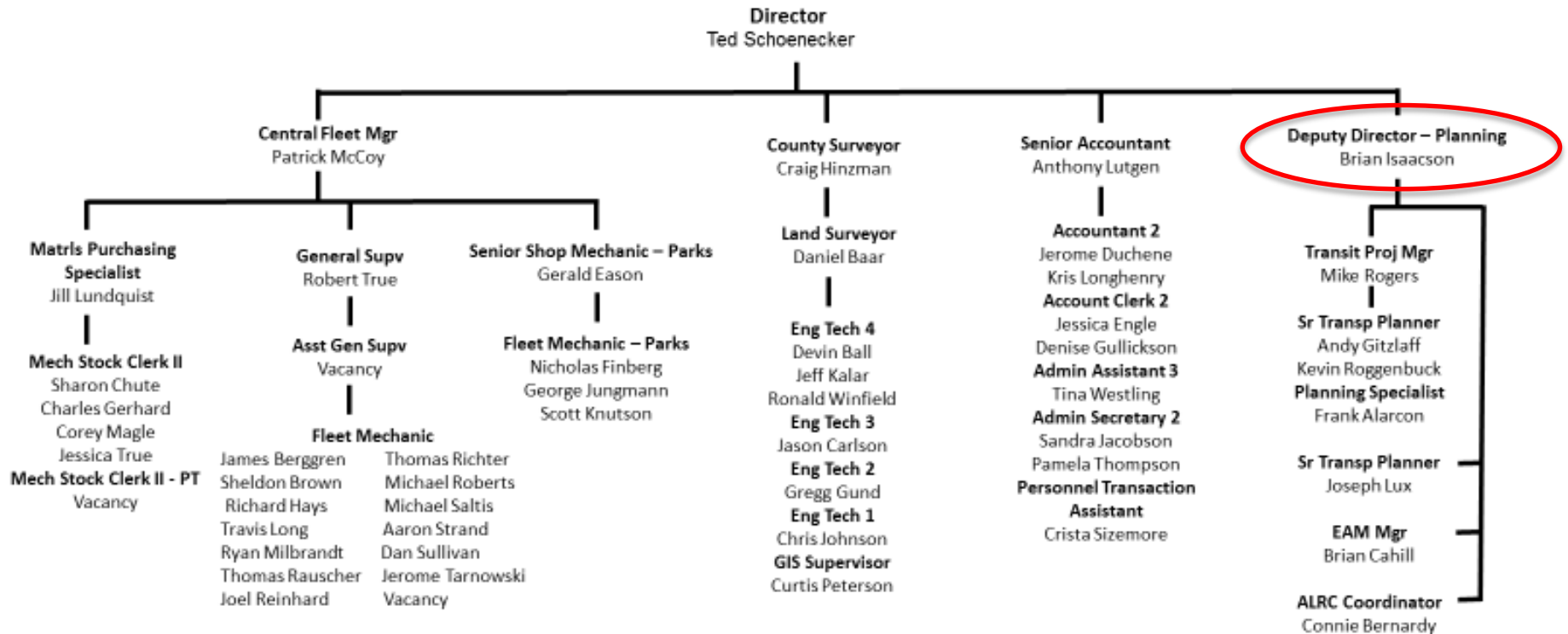
△ Southern Project Limit △

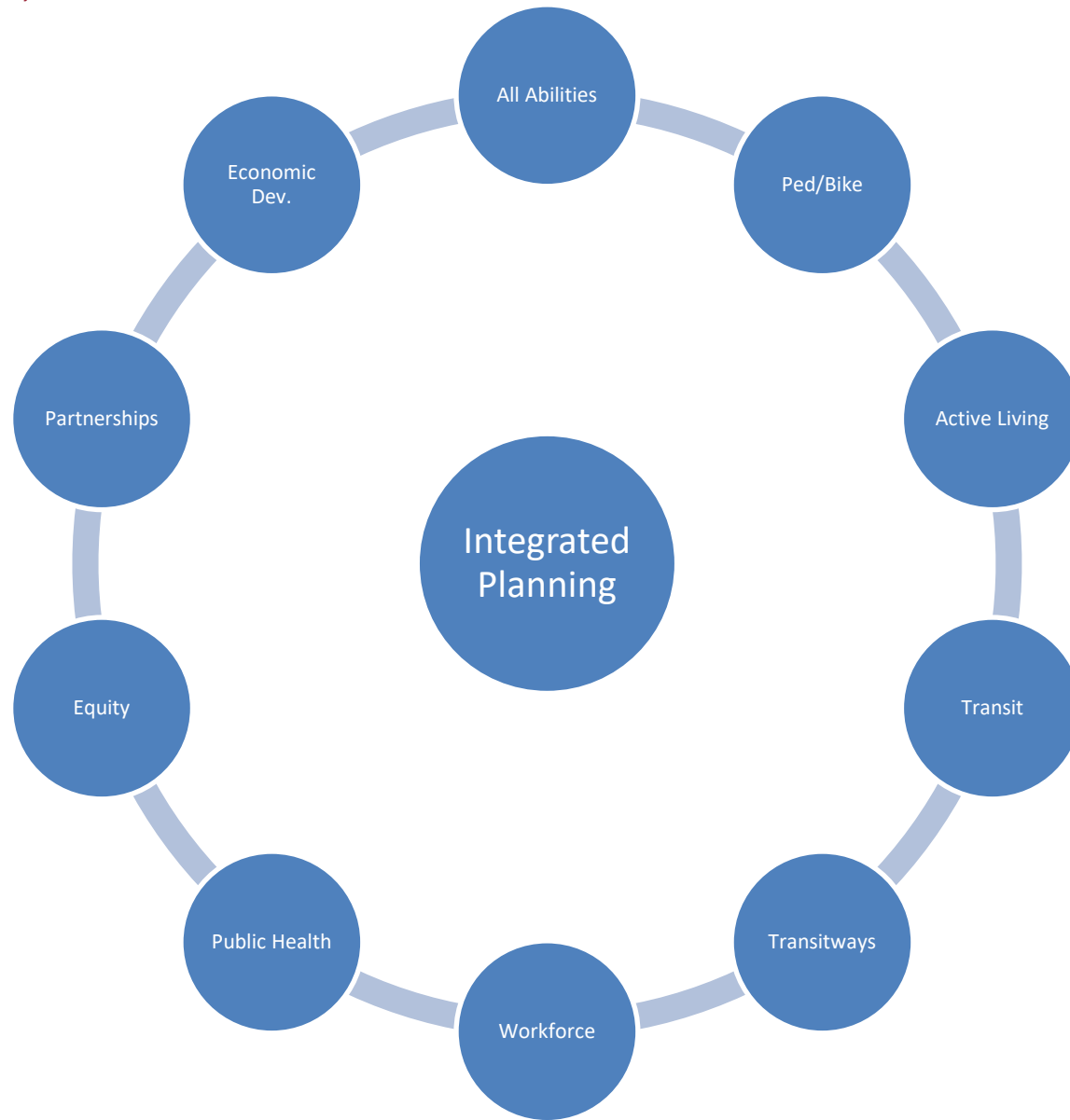
Ramsey County Public Works Organizational Structure



Last Revised –
January 29, 2019

Ramsey County Public Works Organizational Structure





Future Items for Public Works

- 4-Lane to 3-Lane Study of County Roads
- Asset Management Implementation
- Jurisdictional Realignment Study
- St Paul Maintenance Agreement of County Roads
- Public Works Space Study
 - Wheelage tax; integrated planning/co-location of staff; remote working; jurisdictional study results; St Paul Maint agreement results, etc.
- Refined project selection for projects included in future TIP's

2019-2023 Transportation Improvement Program- Submission to Board for Approval February 19, 2019



County Road F reconstruction project between
Hamline Avenue and Lexington Avenue

Questions/Discussion