



RAMSEY COUNTY

Ramsey County Board Briefing:

Boys Totem Town Closure

Health& Wellness Service Team
Community Corrections Juvenile Services

Tuesday, May 28th, 2019

Estimated start: 9:45 am

220 Courthouse, Large Conference Room

Agenda

- | | |
|--------------------------|---|
| 1. Introduction | Paul Allwood
Deputy County Manager |
| 2. Presentation | John Klavins, Director
Community Corrections

Michelle Finstad, Deputy Director
Community Corrections |
| 3. Discussion, Questions | All |

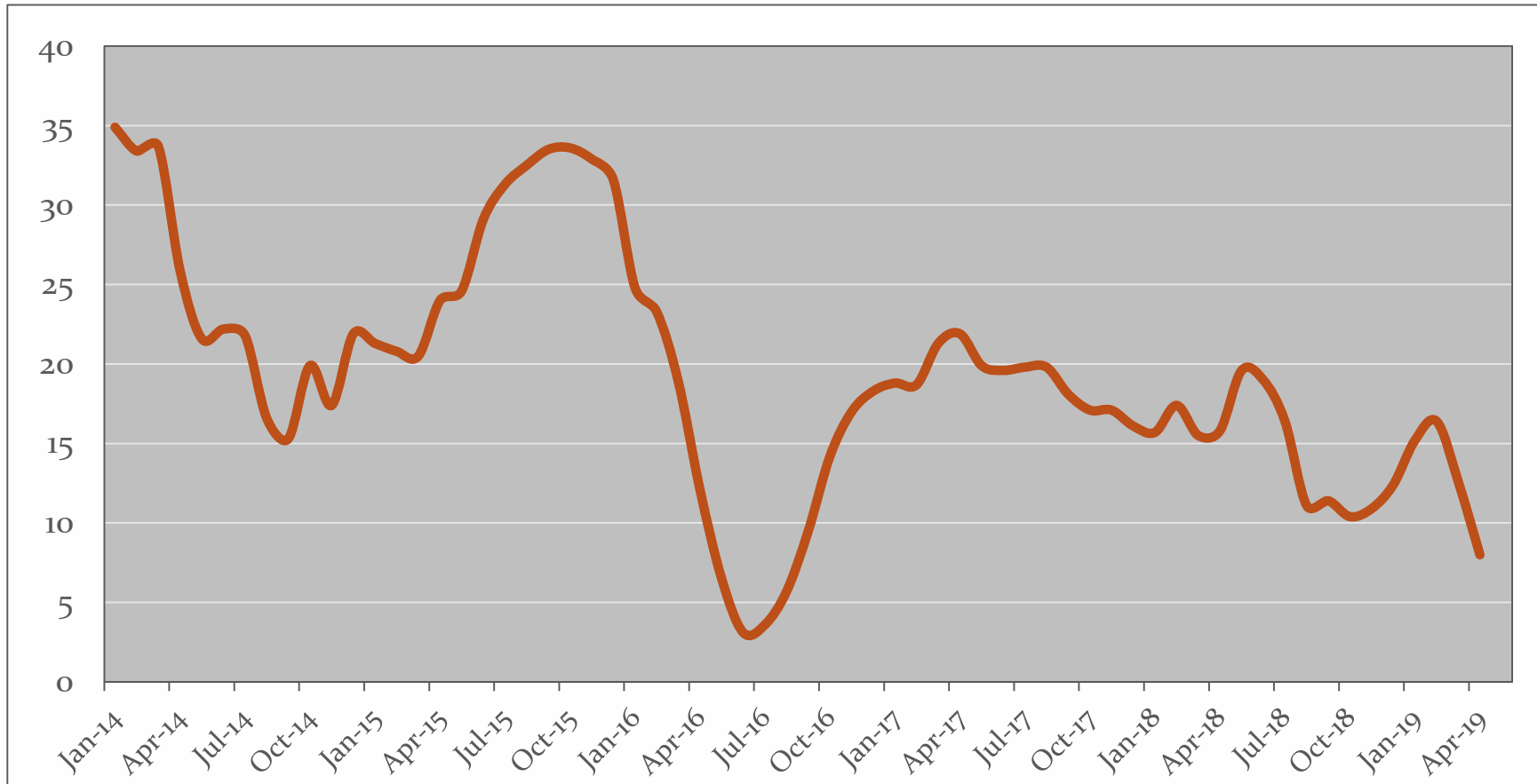
Boys Totem Town Closure

County Board Briefing May 28, 2019

Boys Totem Town



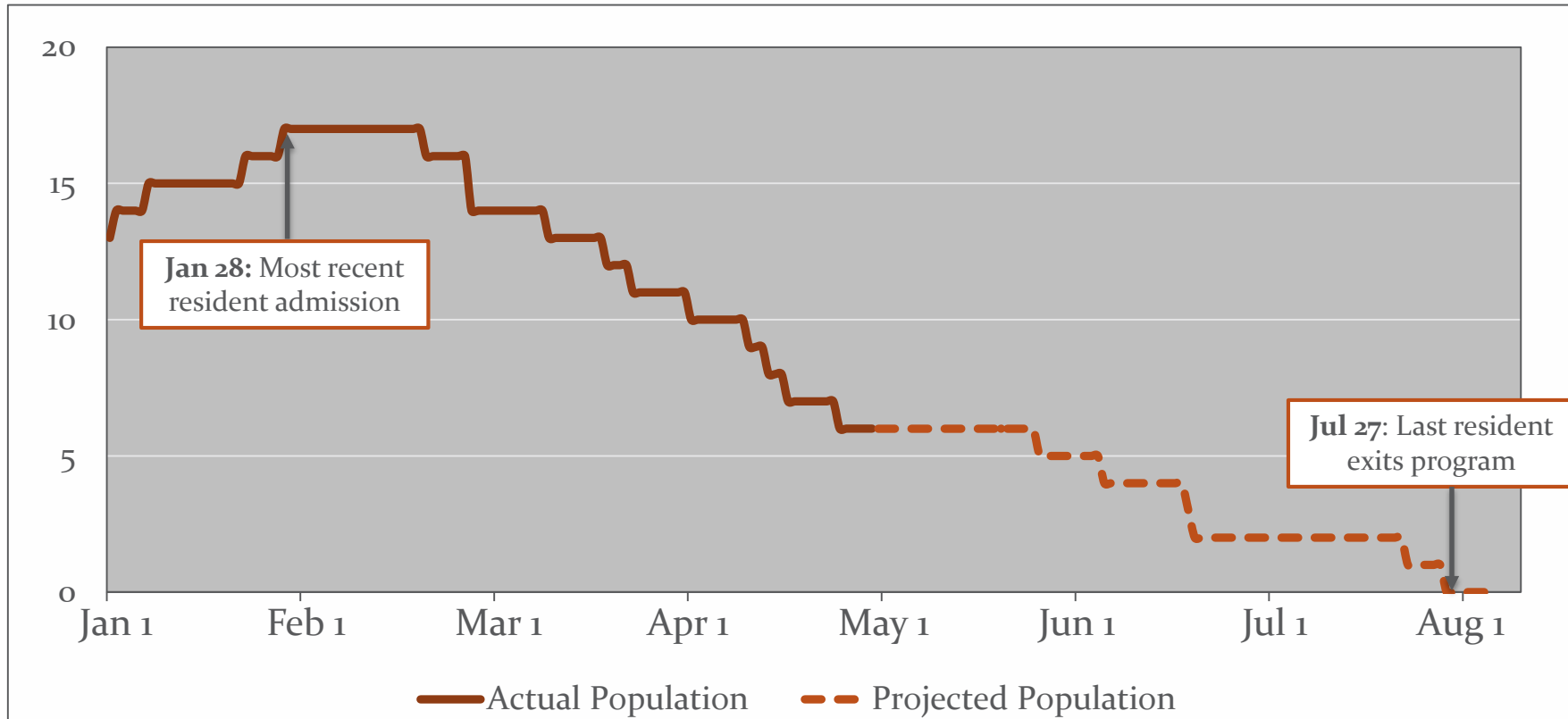
Boys Totem Town - Average Daily Population January 2014 - April 2019



Boys Totem Town Population Projection Based on Resident Population as of April 30, 2019

On July 27, we project BTT will have a population of zero residents.

This projection was calculated utilizing the following assumptions: (1) Current residents at BTT will be in the program for 180 days; and (2) There will be no new admissions to BTT from May 1 onward.



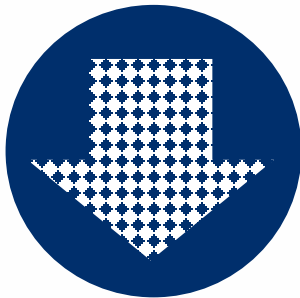
Boys Totem Town Operating Costs

2014	2018
Number of Youth Admitted: 81	Number of Youth Admitted: 35
FTEs: 53	FTEs: 52
Operating Budget: \$5.7M	Operating Budget: \$5.6M
Budget includes personnel, fixed facility costs, maintenance, operations and programming expenses	

Ramsey County Juvenile Justice Trends

Juvenile Detention Center

<u>Year</u>	<u>Admissions</u>
2014	950
2015	901
2016	892
2017	848
2018	728



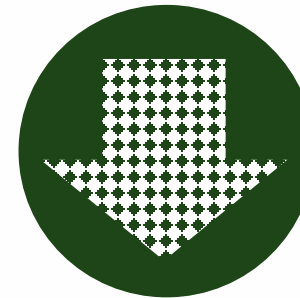
Juvenile Probation

<u>Year</u>	<u>Youth</u>
2014	1,064
2015	1,064
2016	952
2017	841
2018	739

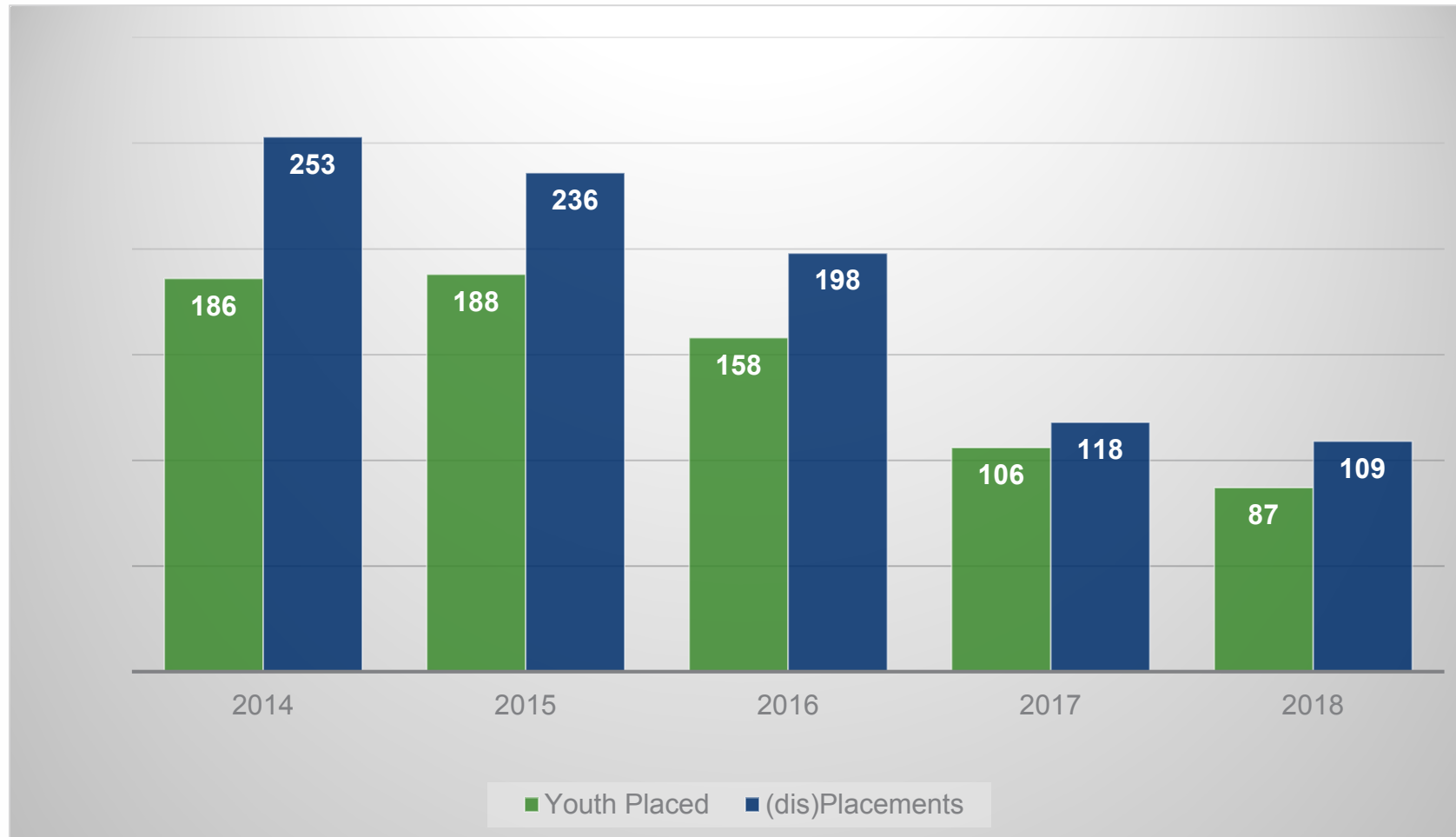


Out of Home Placement

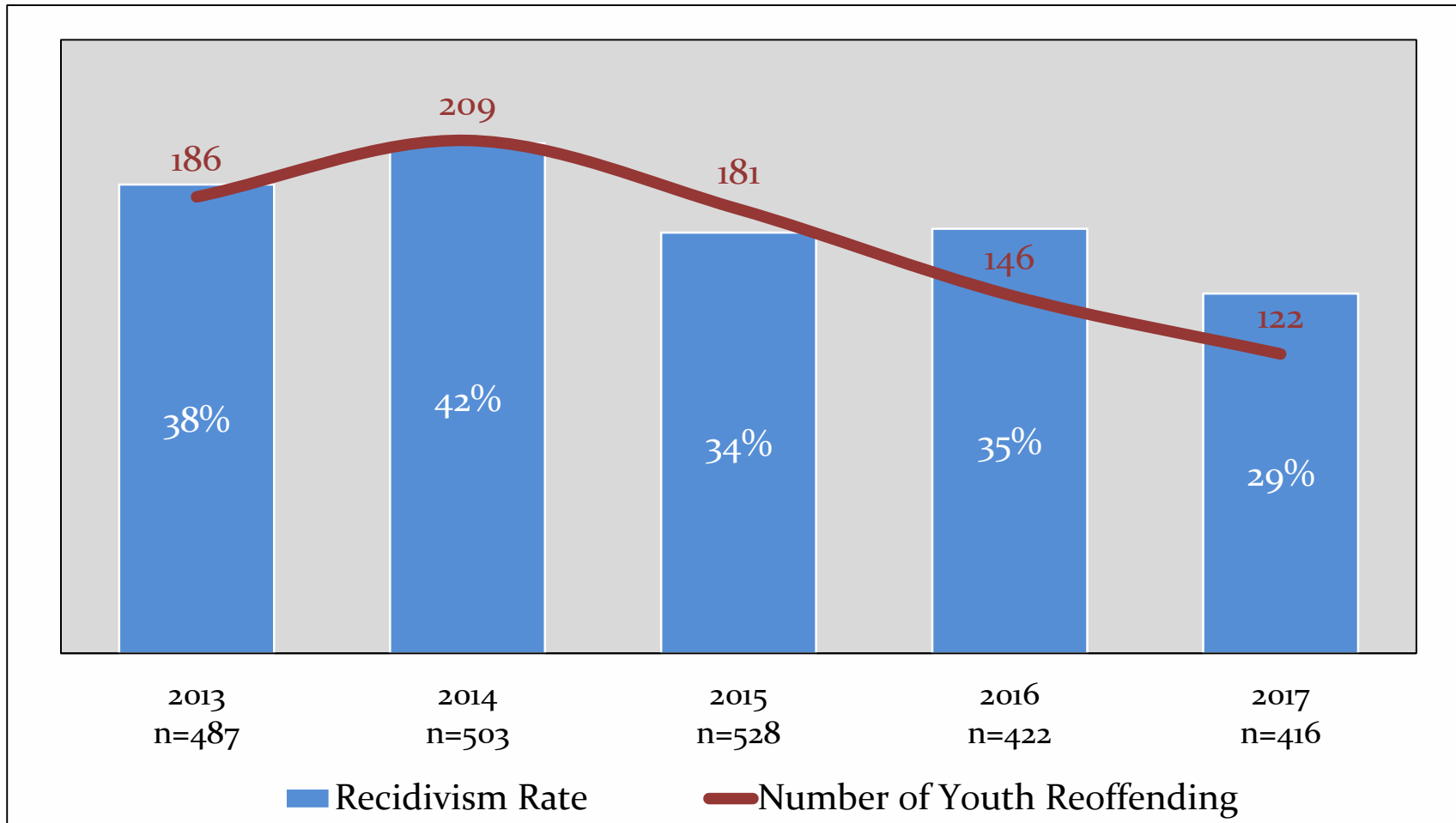
<u>Year</u>	<u>Youth</u>
2014	186
2015	188
2016	158
2017	106
2018	87



Out of Home (dis)Placements 2014-2018



1 Year Recidivism Youth Starting Probation by Year



Growing Community Supports for Youth and Families

Before 2015

- FFT-Functional Family Therapy
- ART-Aggression Replacement Training
- Community Coaches

Additional supports since 2015

- Circle of Peace
- Neighborhood House
- Talitha Cumi
- Decision Points
- PINE: Park Involved Nature Education
- Victim Impact Group
- High Fidelity Wraparound
- Kinship
- 3rd Millennium Online Prevention Programs
- Individualized Services for Youth and Families
- Family Group Decision Making
- Cognitive Based Interventions-Substance Abuse

What's Coming

- Ongoing community collaboration
- System of Care Grant
- Alternative Community Based Solutions
- Home Based Services
- Girls Programming
- Intensive Day Services
- Partnerships with Schools

Boys Totem Town Resources

Short term Plan

- Redeploy all full and part time staff
- Decommission the BTT facility
- Closing commemoration

Long Term Plan

- Expand justice reform efforts – juvenile and adult
- Reduce Racial Disparities
- Address structural challenges: revocations, fines and fees, community instability, etc.

Questions / Comments