

Disclaimers

This conversation is being recorded.

We are recording for documentation purposes.

We cannot discuss private and confidential information during this session.

Land Acknowledgement

Every community owes its existence and vitality to generations from around the world who contributed their hopes, dreams, and energy to making the history that led to this moment. Some were brought here against their will, some were drawn to leave their distant homes in hope of a better life, and some have lived on this land since time immemorial. Truth and acknowledgment are critical to building mutual respect and connection across all barriers of heritage and difference.

We are standing on the ancestral lands of the Dakota People. We want to acknowledge the Ojibwe, the Ho Chunk and the other nations of people who also called this place home. We pay respects to their elders past and present. Please take a moment to consider the treaties made by the tribal nations that entitle non-Native people to live and work on traditional Native lands. Consider the many legacies of violence, displacement, migration, and settlement that bring us together here today. And please join us in uncovering such truths at any and all public events.

The acknowledgment given in the USDAC Honor Native Land Guide - edited to reflect Minnesota tribes. In review with SIA and endorsed by Shannon Geshick, Executive Director Minnesota Indian Affairs Council



Public Health Presents: Respiratory Illnesses

Lynne Ogawa, MD and Laura Andersen, MPH

10/25/23

Objectives

1. Receive the latest information on the new RSV vaccine.
2. Learn more about the newest Covid-19 variant and ways you can protect yourself.
3. Learn more about syndromic surveillance for respiratory illnesses here in Minnesota.

Seasonal Outlook

CDC expects this year will be similar to last year in terms of the total number of hospitalizations from COVID-19, RSV, and flu.

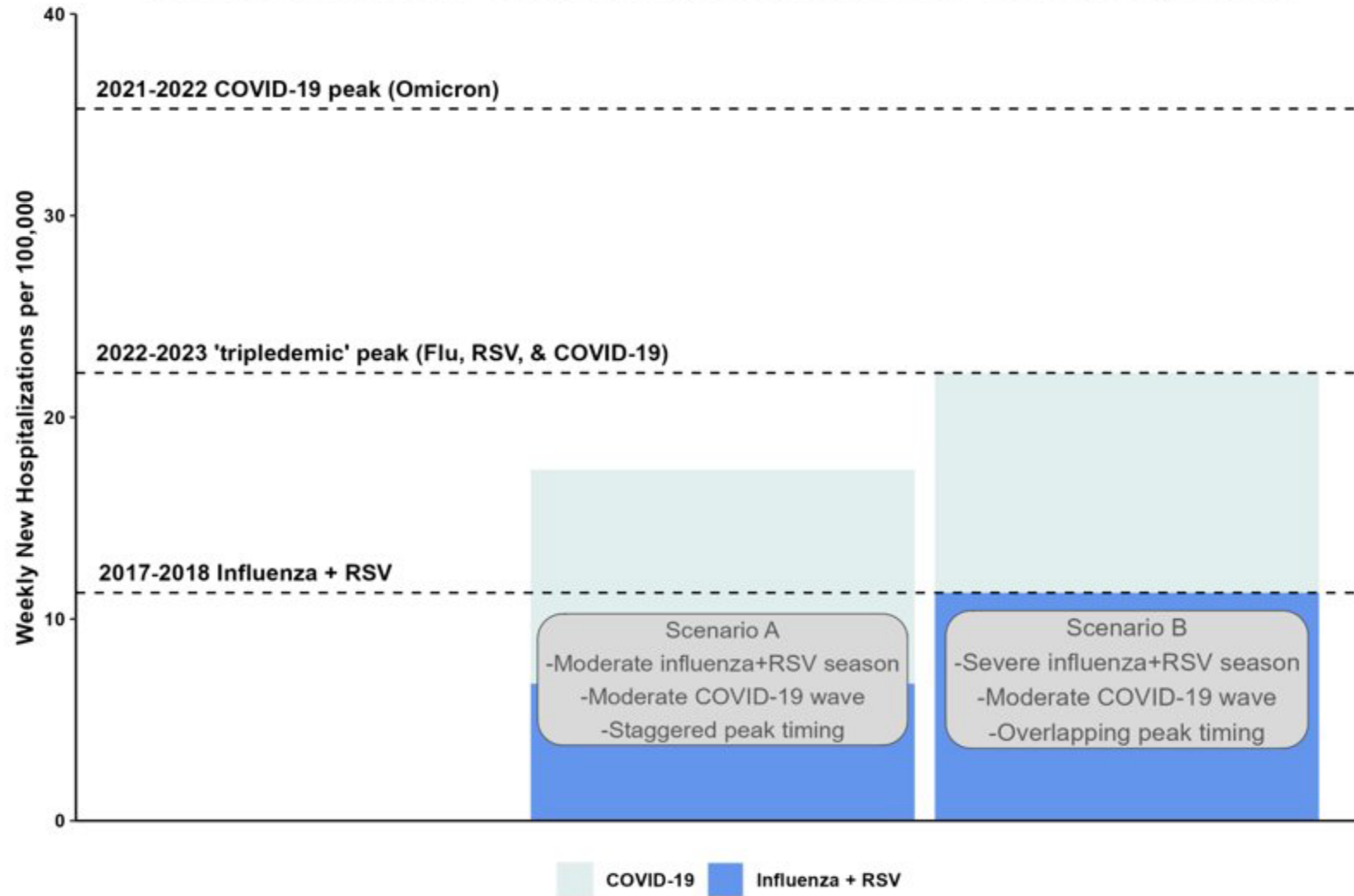
Total number of hospitalizations is expected to be higher than pre-pandemic levels.

Flu activity is currently low but will increase. Timing, intensity and severity cannot be predicted.

RSV activity is low and likely to increase.

Vaccination for all three viruses protects against serious outcomes. **For the first time in U.S. history vaccines for all three of these viruses are available.**

Potential Scenarios for Combined Peak Burden of COVID-19, Influenza, and RSV



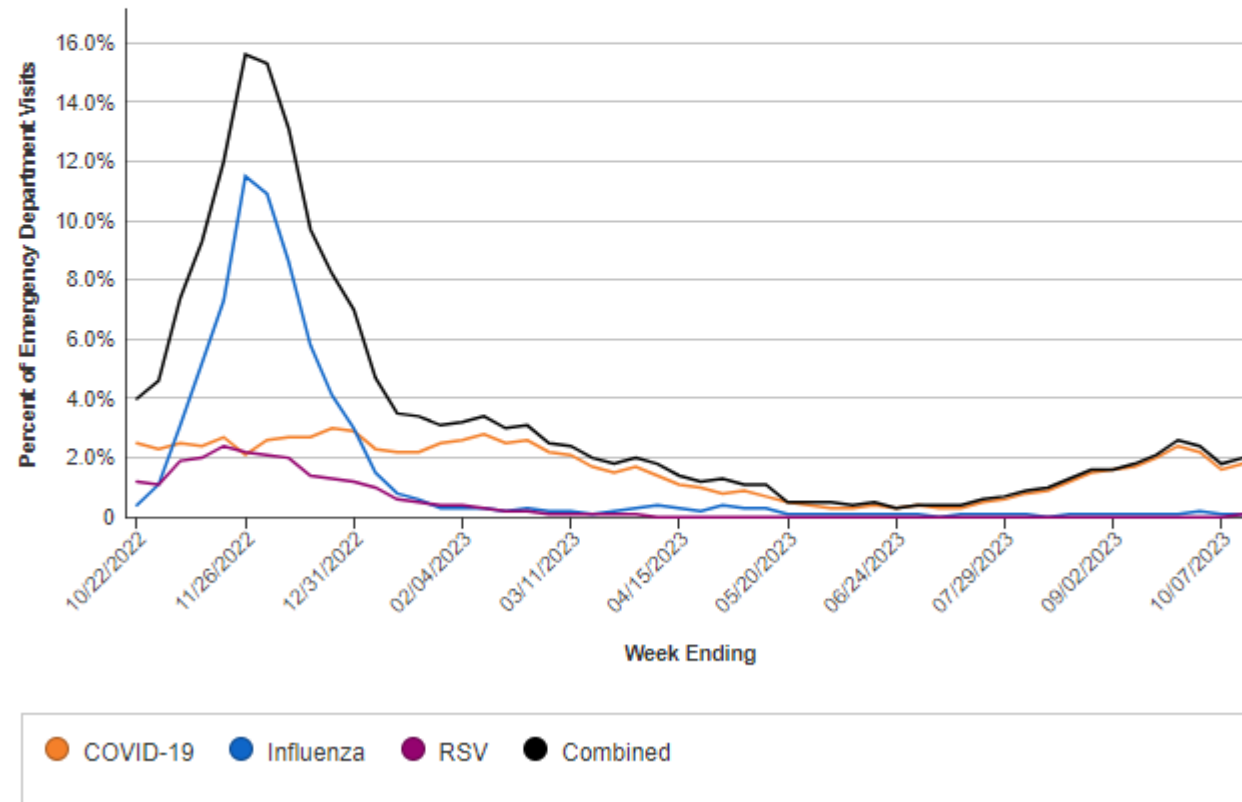
Emergency Department Visits for Viral Respiratory Illness

Weekly percent of total emergency department visits associated with COVID-19, influenza, and RSV

The figure below provides an overview of how the three respiratory viruses are circulating in your area. An overall weekly summary of current viral respiratory illness activity and severity is available [here](#).

State/Territory

Minnesota ▼



Data presented through: 10/14/23; Data as of: 10/18/23

View

Weekly Rates

Cumulative Rates

Filters

Season

Multiple selections

Pathogen

All

State

Minnesota

Reset Filters



Download Data

Season

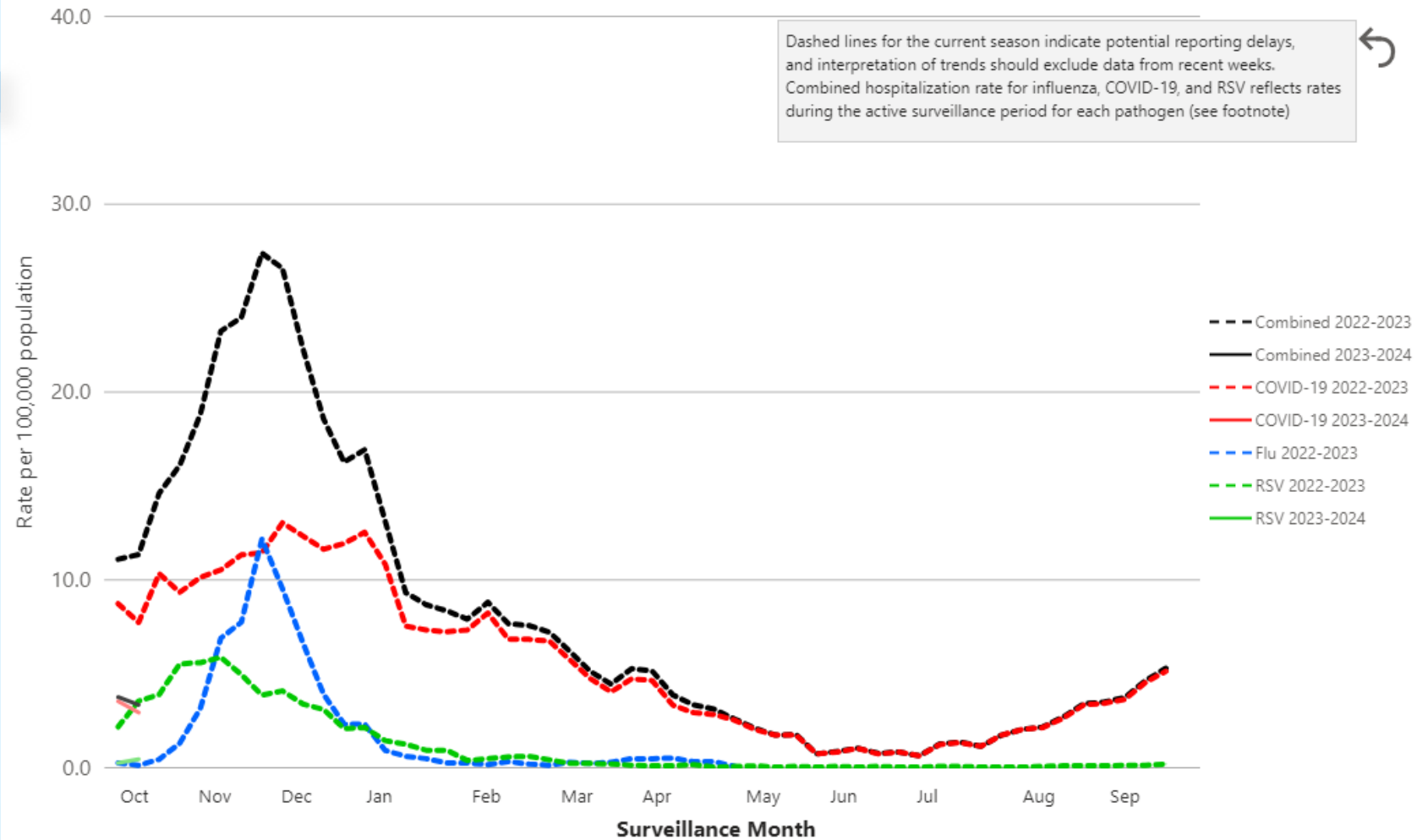
Age

Race/Ethnicity

Sex

State

Weekly Rates of Respiratory Virus-Associated Hospitalizations by State: Minnesota



Data last updated: October 18, 2023. | Accessibility: Right click on the graph area to display options such as show data as table and copy visual.

Interactive Dashboards for Surveillance

- COVID-NET hospitalization data:
 - <https://www.cdc.gov/coronavirus/2019-ncov/covidnetdashboard/de/powerbi/dashboard.html>
- FluSurv-NET hospitalization data:
 - Hospitalization rates:
 - <https://gis.cdc.gov/GRASP/Fluview/FluHospRates.html>
 - Patient characteristics:
 - <https://gis.cdc.gov/grasp/fluview/FluHospChars.html>
- RSV-NET
 - <https://www.cdc.gov/rsv/research/rsv-net/dashboard.html>

Covid-19 surveillance

As of October 14

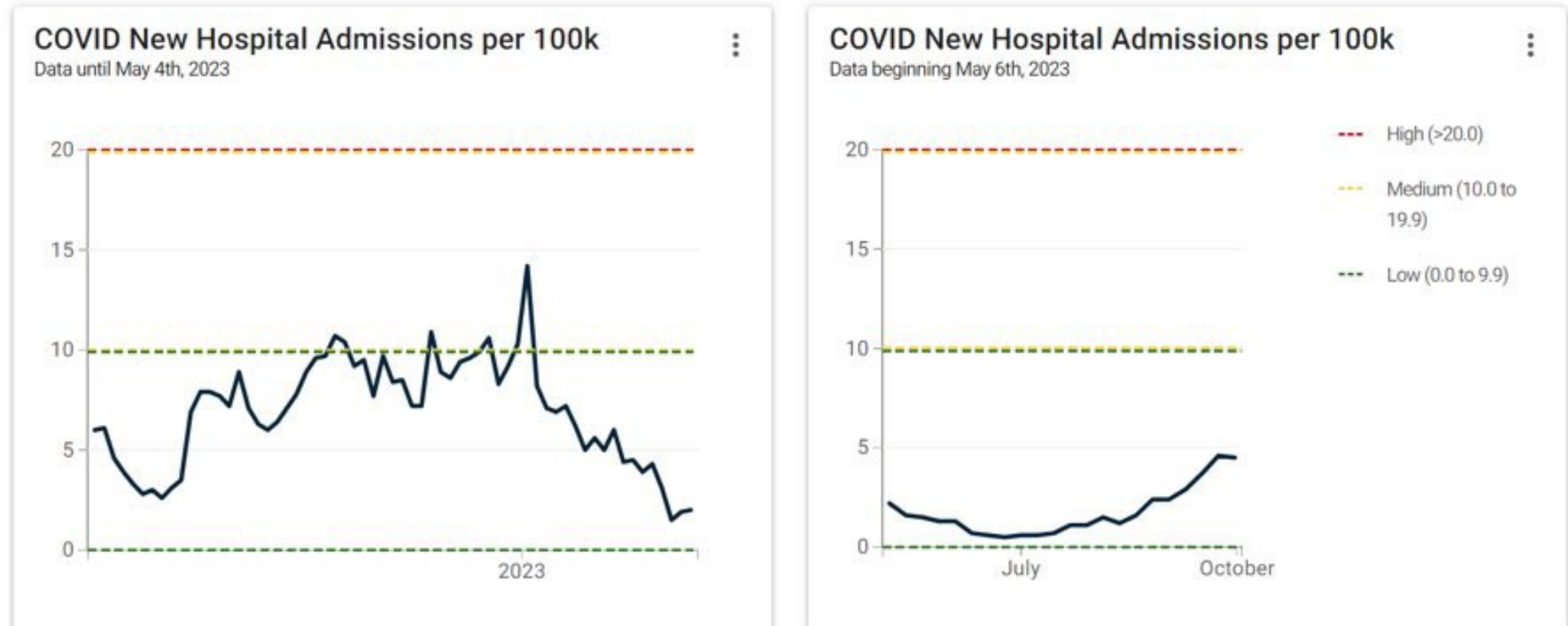
Ramsey County:

- **4.5** new COVID-19 hospital admissions per 100,000 population (LOW)
- -3% change from previous week

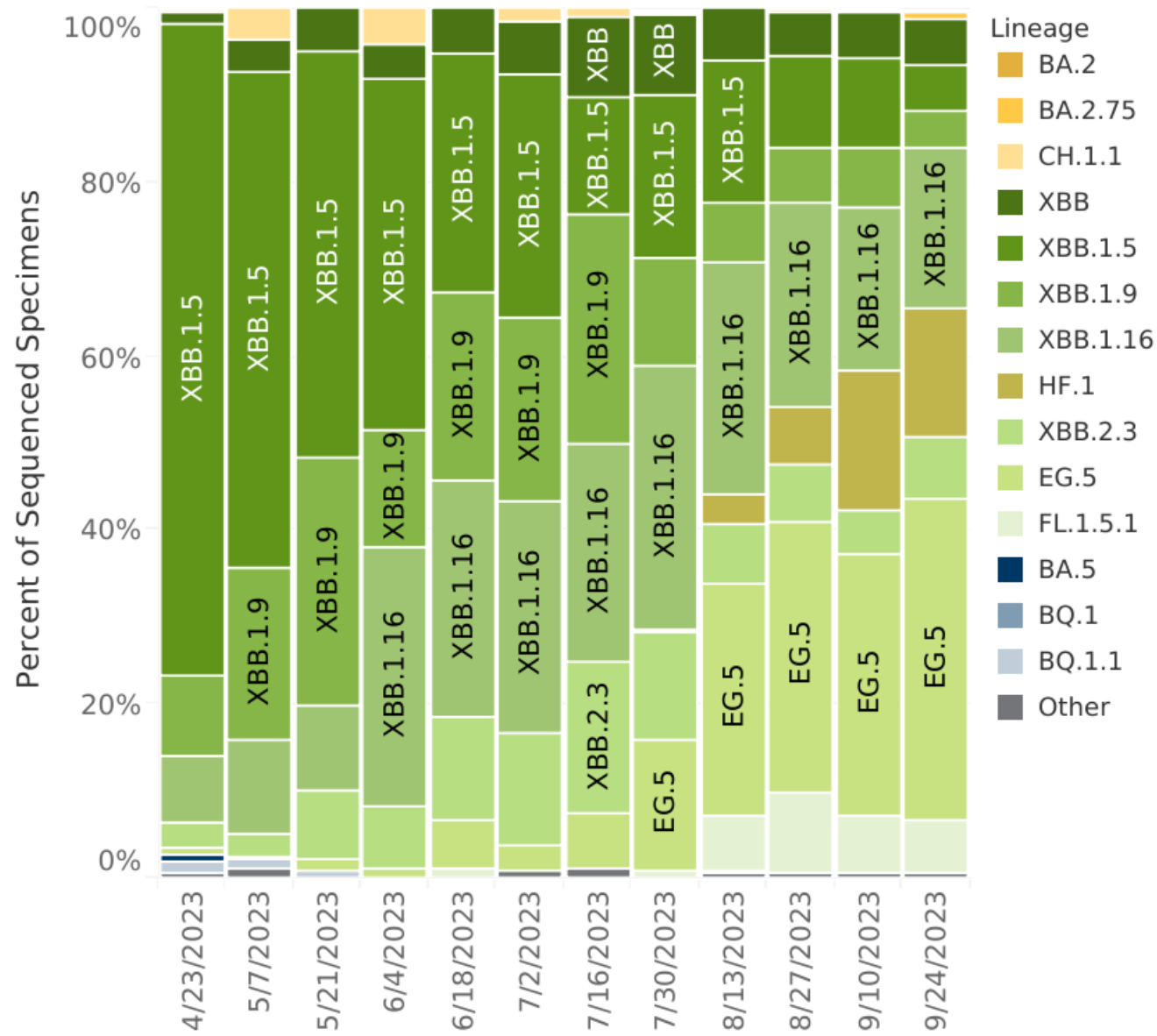
Minnesota:

- High (≥ 20.0) counties: 0
- Medium (10.0-19.9) counties: 3
- Low (< 10.0) counties: 84

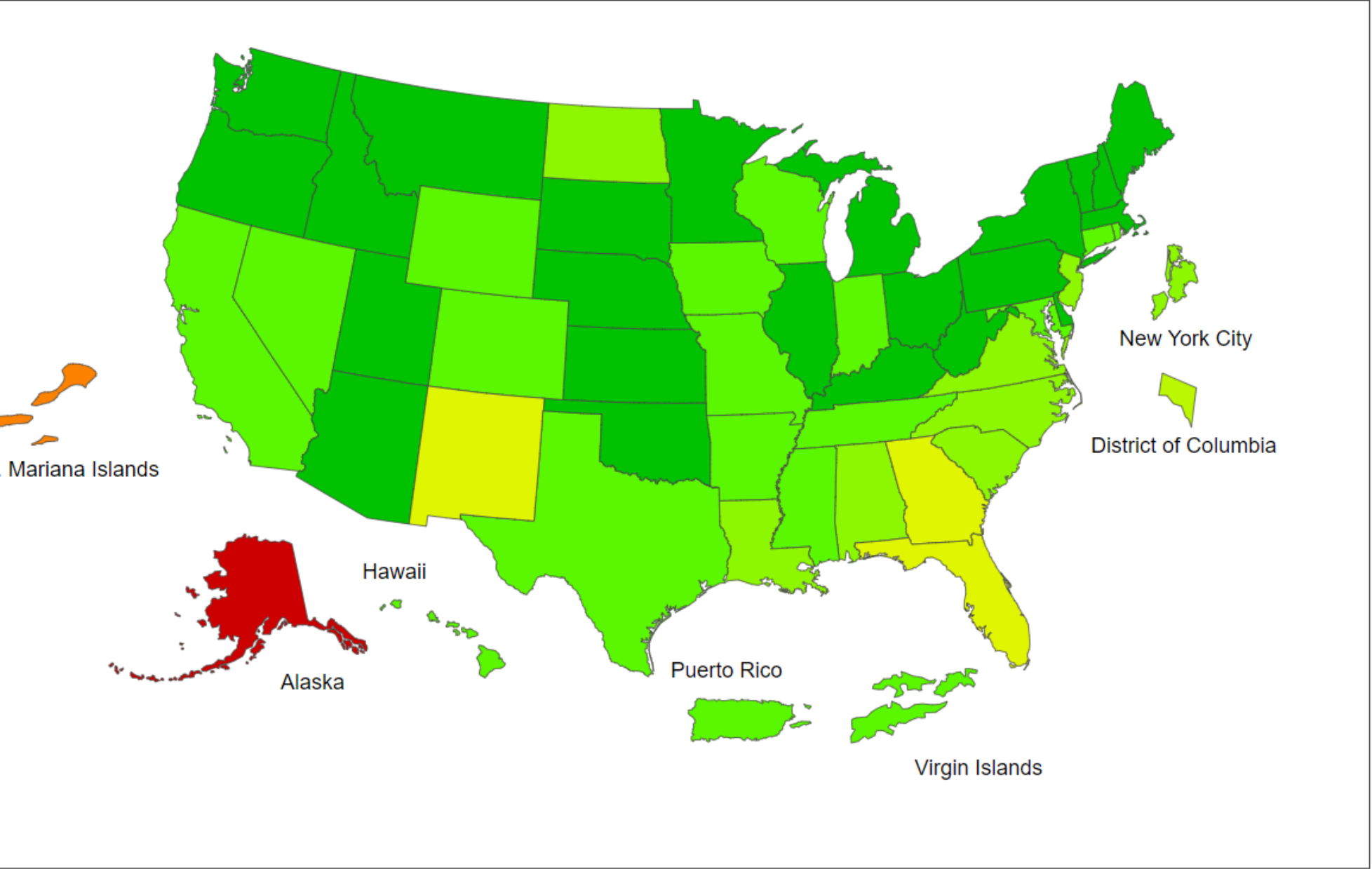
Covid-19 surveillance



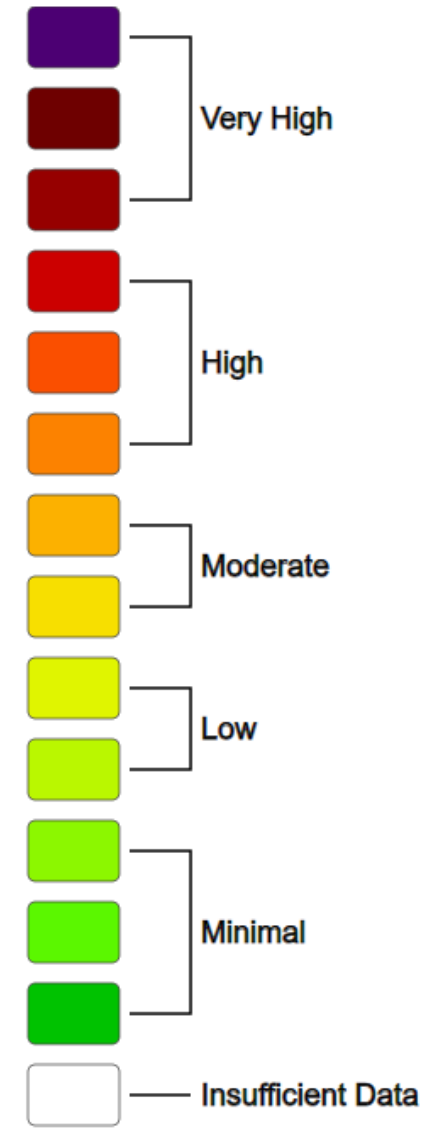
Lineage Distribution by Two-Week Time Peri..

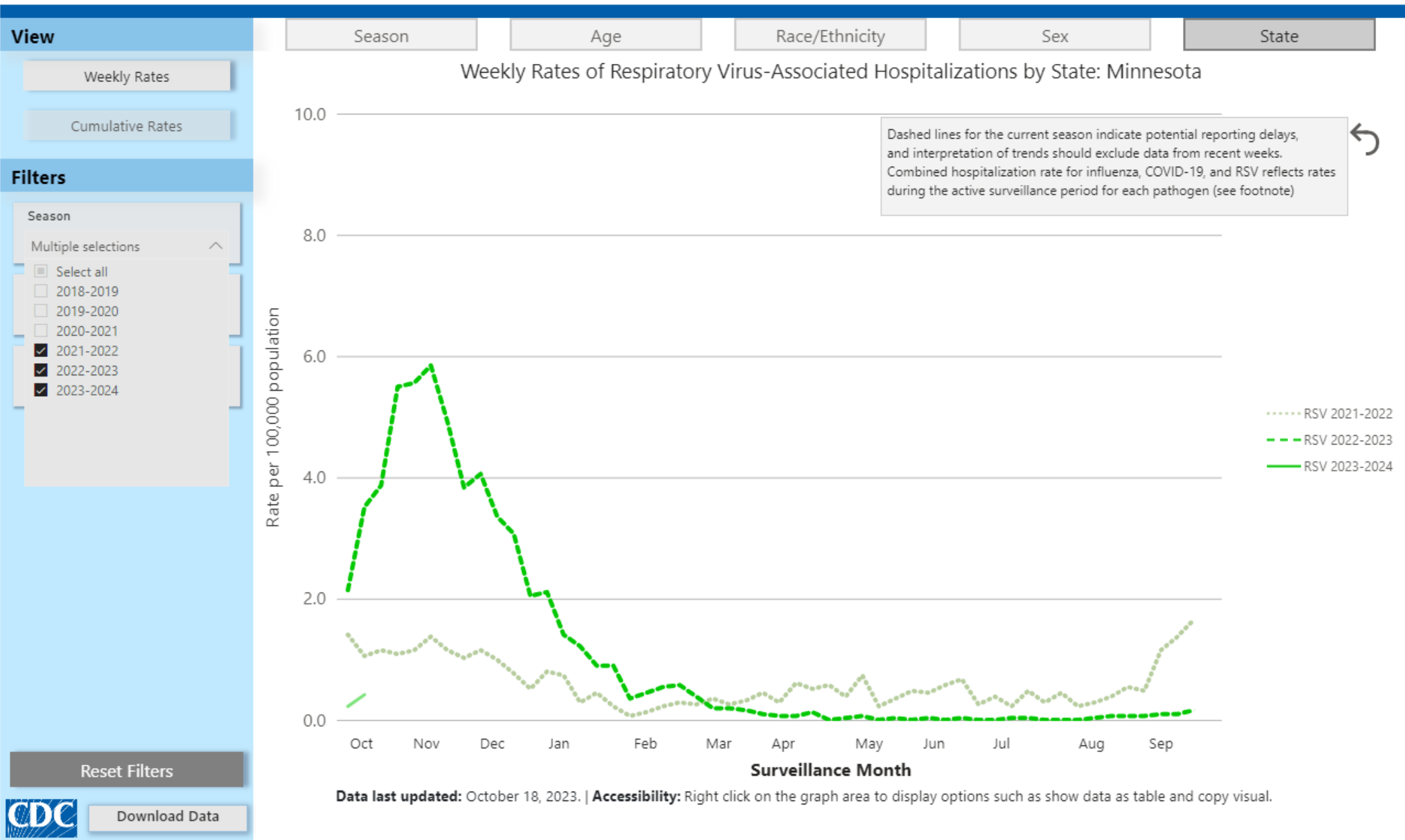


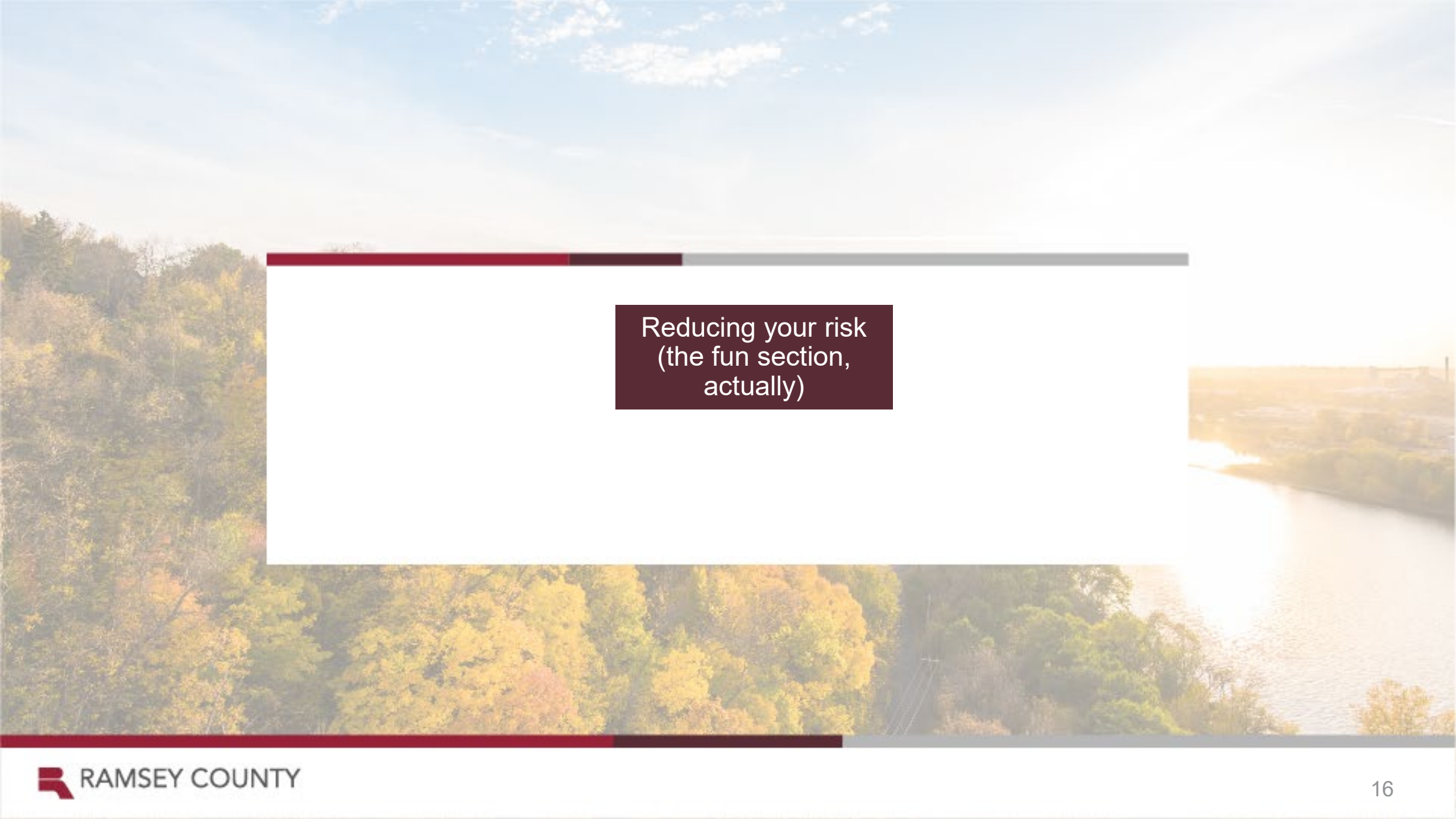
2023-24 Influenza Season Week 41 ending Oct 14, 2023



ILI Activity Level





The background of the slide is a scenic landscape. On the left, there is a dense forest of trees with vibrant autumn foliage in shades of yellow, orange, and green. To the right, a wide river flows, reflecting the bright sunlight that creates a strong lens flare effect across the upper right portion of the image. The sky is a pale blue with wispy white clouds. A horizontal bar with a dark red segment on the left and a grey segment on the right is positioned above the text box.

Reducing your risk
(the fun section,
actually)

Covid-19 boosters,
developed specifically for
the new variants, are now
available.

Where: FQHCs, primary
care, pharmacies, Bridge
Access

When to get it: now

Locations near 55406 who report having COVID-19 vaccines in stock. *

with Moderna (12+ / 18+)

Only show locations with:

☐ Ability to vaccinate 6 months ▾

☒ **Bridge Access Program** Participant

Provides no-cost COVID-19 vaccines to adults without health insurance and adults whose insurance does not cover all COVID-19 vaccine costs.

[Learn more](#) 

Powered by **VaccineFinder**

Flu shots (mist, egg-free, 65+) are now available.

Where: FQHCs,
primary care,
pharmacies

When to get it: now

[← Back to Flu Search](#)

Locations near 55406 who report having flu vaccines in stock. *

Powered by [VaccineFinder](#)

** Please note that Vaccines.gov reflects vaccine availability only from providers who have agreed to report their information to CDC.*

1. [CVS Pharmacy, Inc. #16010](#)

0.3 miles

2500 E Lake St, Minneapolis, MN 55406

[Book Appointment](#) 

[Call \(612\) 721-1611](#) 

RSV: multiple types of protection, depending on age

RSV vaccine given during pregnancy (Abrysvo)

- Protection passed to baby during pregnancy
- Recommended when 32-36 weeks pregnant
- Usually given during September-January

RSV antibody given to the baby

Nirsevimab (Beyfortus)

- Recommended for all babies younger than 8 months
- A dose is also recommended for babies with certain medical conditions and American Indian and Alaska Native babies between the ages of 8 and 19 months entering their second RSV season
- Usually given during October-March

Palivizumab (Synagis)

- Like Nirsevimab, directly provides protection to babies less than 6 months who are born prematurely or less than 2 years old and with certain medical conditions



Protection against RSV: older adults

RSV vaccine

- Available to adults 60 and over (Arexvy and Abrysvo)
- Both can protect against severe illness. Each year RSV causes serious illness in older adults:
 - 60,000-160,000 hospitalizations
 - 6,000-10,000 deaths

Talk to your doctor to see if vaccination is right for you.

- Adults who are 60 years or older are at highest risk, especially:
- Adults who have chronic heart or lung disease
- Adults who have weakened immune systems



Testing for flu... or other respiratory illnesses

Providers will report any positive RSV or Covid-19 test to the state (aka, a reportable) disease

Most individuals will take a home testing kit for Covid-19, however. Whether you test or not, it is important to isolate when you feel sick.

Every U.S. household may place an order to receive four free COVID-19 rapid tests delivered directly to your home.

Order Free At-Home Tests

Need help placing an order for your at-home tests?
Call [1-800-232-0233](tel:1-800-232-0233) (TTY [1-888-720-7489](tel:1-888-720-7489)).

The U.S. government will continue to make COVID-19 tests available to uninsured individuals and underserved communities through existing outreach programs. Please contact [a HRSA health center](#), [Test to Treat](#) site, or [ICATT location](#) near you to learn how to access low- or no-cost COVID-19 tests provided by the federal government.

What about masks and handwashing?

Both still work.

Proper handwashing prevents 1 in 5 respiratory illnesses.





Questions