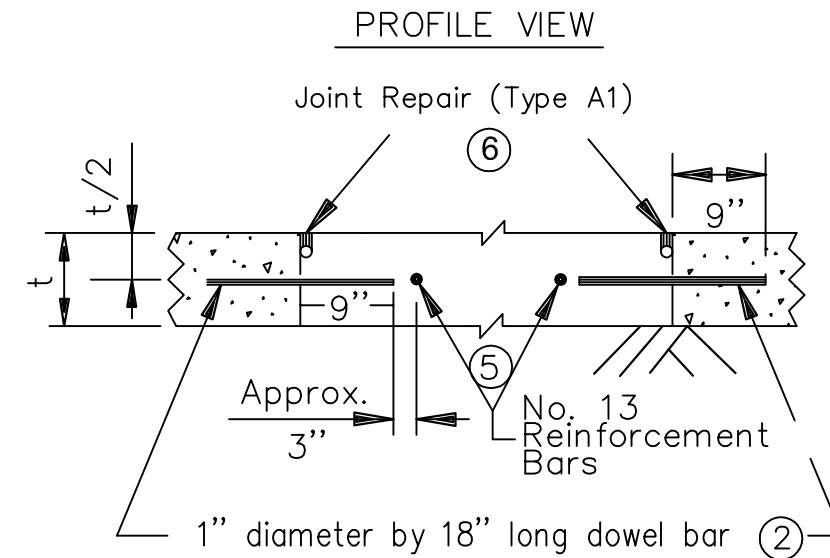
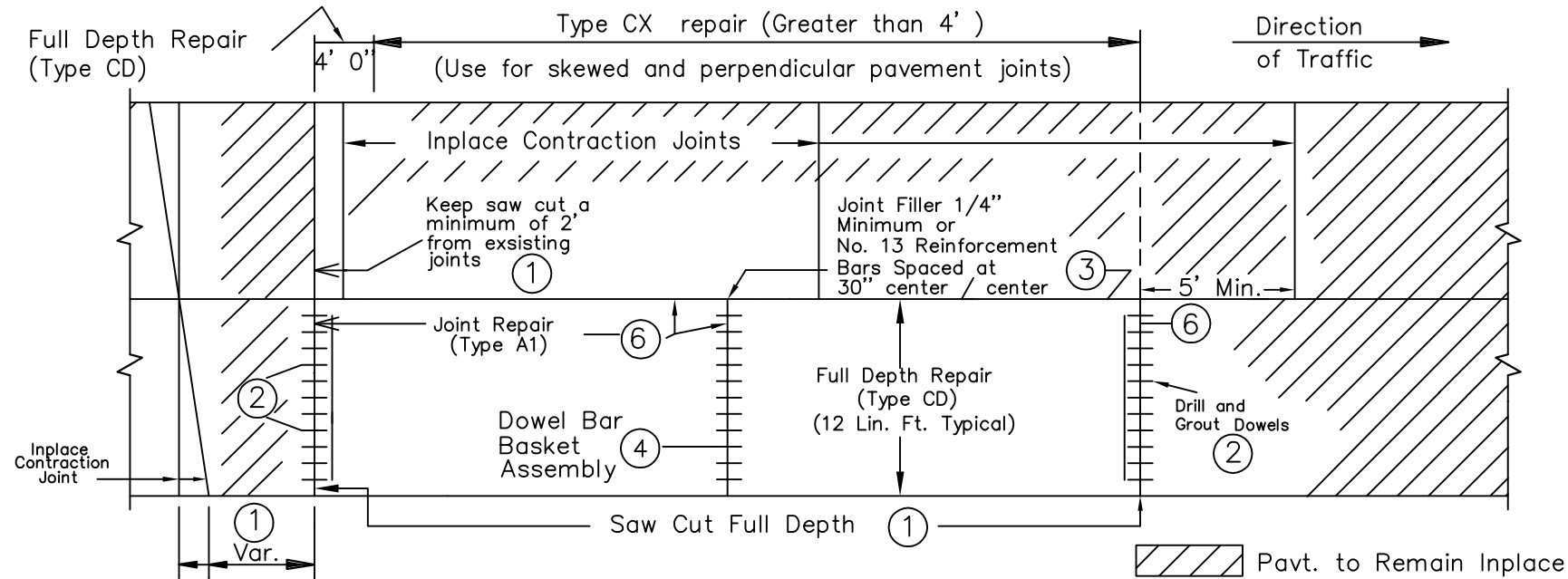


# PAVEMENT REPLACEMENT (TYPE CX)

DESCRIPTION: REMOVE CONCRETE, RESTORE AND COMPACT BASE, PLACE DOWELS AND REINFORCEMENT BARS, FURNISH AND PLACE CONCRETE, SAW AND SEAL JOINTS.



## Notes

- \* Place saw cut at least 2' up stream or 5' down stream from any transvers joints in the adjacent lane.
- \* Dowel bar basket required when length of the repair exceeds 15'. On longer repairs place dowel bar baskets at 15' C. to C. (4)

## WORK TO BE DONE

1. See Full Depth Repair (Type CD) for additional information.
2. Saw full depth & remove in place concrete pavement. Restore and compact in place base. (1)
3. Drill in place concrete for dowel bars. Eliminate inside 5 dowels for (Type CD-LV) repairs (2)
4. Furnish and install dowels. Secure dowels to the in place concrete with a approved non shrink grout or epoxy bonding agent. (2) Coat free end of dowels with a form coating material meeting Spec. 3902.
5. If matching the in place transverse joints, drill and grout reinforcement bars into the adjacent lane. Drill and grout reinforcement bars not require if repair length is under 75'. (3)
- 5a. If isolating the in place transverse joints from the pavement replacement, furnish and install 1/4" joint filler between the adjacent lane and the repair. (3)
6. Place dowel bar basket assemblies as needed. (4)
7. Clean vertical surfaces of in place concrete.
8. Place reinforcing bars over culverts as needed, See Standard Plate 1070.
9. Furnish and place Concrete Mix Number 3A32.
10. Furnish and install reinforcement bars in plastic concrete, 3" from end of dowel bar at mid-depth. (5)
11. Vibrate, finish to grade and slope, edge, texture, and apply cure.
12. Green saw joints over dowel bar baskets. (4)
13. Saw and seal joints in accordance with Joint Repair (Type A1) detail. (6) (Incidental)

## BASIS OF PAYMENT

—	—	2302 Full Depth Repair (Type CD) (Lin.Ft.)
—	—	2302 Drill and Grout Reinforcement Bars (Epoxy Coated) (Each)
—	—	2302 Dowel Bar (Each)
—	—	2302 Supplemental Reinforcement Bars (Epoxy Coated) (Pound)
—	—	2302 Pavement Replacement (Type CX) (Sq. Yd.)

DATE: NOV-01-2012