



# **RICE CREEK NORTH REGIONAL TRAIL MASTER PLAN AMENDMENT**

**APPROVED BY THE RAMSEY COUNTY BOARD OF COMMISSIONERS JUNE 25, 2013**

**APPROVED BY THE METROPOLITAN COUNCIL AUGUST 28, 2013**



# TABLE OF CONTENTS

<b>Planning Framework</b> .....	<b>3</b>
Overview.....	3
Metropolitan Regional Parks and Open Space System .....	3
Ramsey County Parks and Recreation .....	3
History .....	6
Citizen Participation and Municipal Support .....	8
Demand Forecast.....	9
<b>Existing Conditions</b> .....	<b>11</b>
Boundaries and Acquisition Costs .....	11
Natural Resources Inventory.....	12
Historic Resources Inventory .....	14
<b>The Plan</b> .....	<b>15</b>
Development Concept.....	15
Stewardship Plan .....	18
Public Services .....	19
Conflicts.....	20
Accessibility .....	20
<b>Implementation</b> .....	<b>21</b>
Phasing and Priorities.....	21
Operations .....	21
Public Awareness .....	22
<b>Appendix A Ordinances</b> .....	<b>23</b>
<b>Appendix B Resolutions</b> .....	<b>27</b>

## List of Figures

Figure 1: Regional Trail System from the Mississippi River to the Rice Creek Chain of Lakes .....	4
Figure 2: Regional Trail System around the Rice Creek North Regional Trail .....	5
Figure 3: Evolution of the Rice Creek North Regional Trail Corridor .....	7
Figure 4: Rice Creek North Regional Trail 3/4 Mile and 3 Mile Service Areas.....	10
Figure 5: Metropolitan Council’s Regionally Significant Natural Resource Areas .....	12
Figure 6: Minnesota Land Cover Classification System (MLCCS) .....	13
Figure 7: Existing Conditions .....	16
Figure 8: Master Plan Development Concept.....	17

## List of Tables

Table 1: Metropolitan Council 2011 Annual Use Estimate .....	9
Table 2: Population Projections .....	9
Table 3: Development Cost Estimates .....	20
Table 4: Operations Cost Estimates .....	21



# PLANNING FRAMEWORK

## Overview

The purpose of the Rice Creek North Regional Trail Amendment is to guide the development, preservation, management, and improvement of the expansion to the Rice Creek North Regional Trail. The Rice Creek North Regional Trail is located in the northwest corner of Ramsey County. The trail is 4 miles in length and is part of a 14-mile regional trail corridor that extends from the Chain of Lakes within Anoka County to the Mississippi River by way of Long Lake Regional Park. The trail corridor includes Rice Creek and its floodplain.

This amendment appends and updates the 1998 Rice Creek North Regional Trail Corridor Master Plan for this portion of the Rice Creek North Regional Trail, referred to in this document as the Rice Creek North Regional Trail Connection. In an effort to provide clarity, this amendment replaces the 2003 Rice Creek North Regional Trail Master Plan Amendment so as to address the expanded Rice Creek North Regional Trail Corridor area. This amendment is written to fulfill the requirements of the Metropolitan Council for regional trail master plans as outlined in the 2030 Regional Parks Policy Plan.



*The amendment guides the development, preservation, management, and improvement of the existing Rice Creek North Regional Trail.*

## Metropolitan Regional Parks and Open Space System

Regional parks and trails are developed in the Twin Cities Metropolitan Area to preserve green space for wildlife habitat and provide a wide-range of natural resource-related recreational opportunities. Established in 1974, the Regional Parks and Open Space System is managed by the Metropolitan Council in partnership with cities, counties, and special park districts. While the operation of the system is the responsibility of cities, counties, and special park districts, the Metropolitan Council supports it with planning, funding, and advocacy. Each implementing agency, such as Ramsey County, is responsible for the development of a master plan for its regional park and open space system components. In 2012, the system includes 51 regional parks and park reserves, 231 miles in 38 regional trails, and seven special recreation features.



## Ramsey County Parks and Recreation

Ramsey County is the most densely population county in the State of Minnesota. The Ramsey County Parks and Recreation system encompasses over 6,500 acres consisting of six regional parks, six regional trails, nine county parks, nine protected open spaces, five golf courses and numerous recreation facilities. The park and open space areas held by Ramsey County represent the largest undeveloped land area in the county. Ramsey County Parks and Recreation works in cooperation with the Metropolitan Council, the National Park Service, St. Paul Regional Water Services, Minnesota Department of Natural Resources (MNDNR), its municipalities, and other



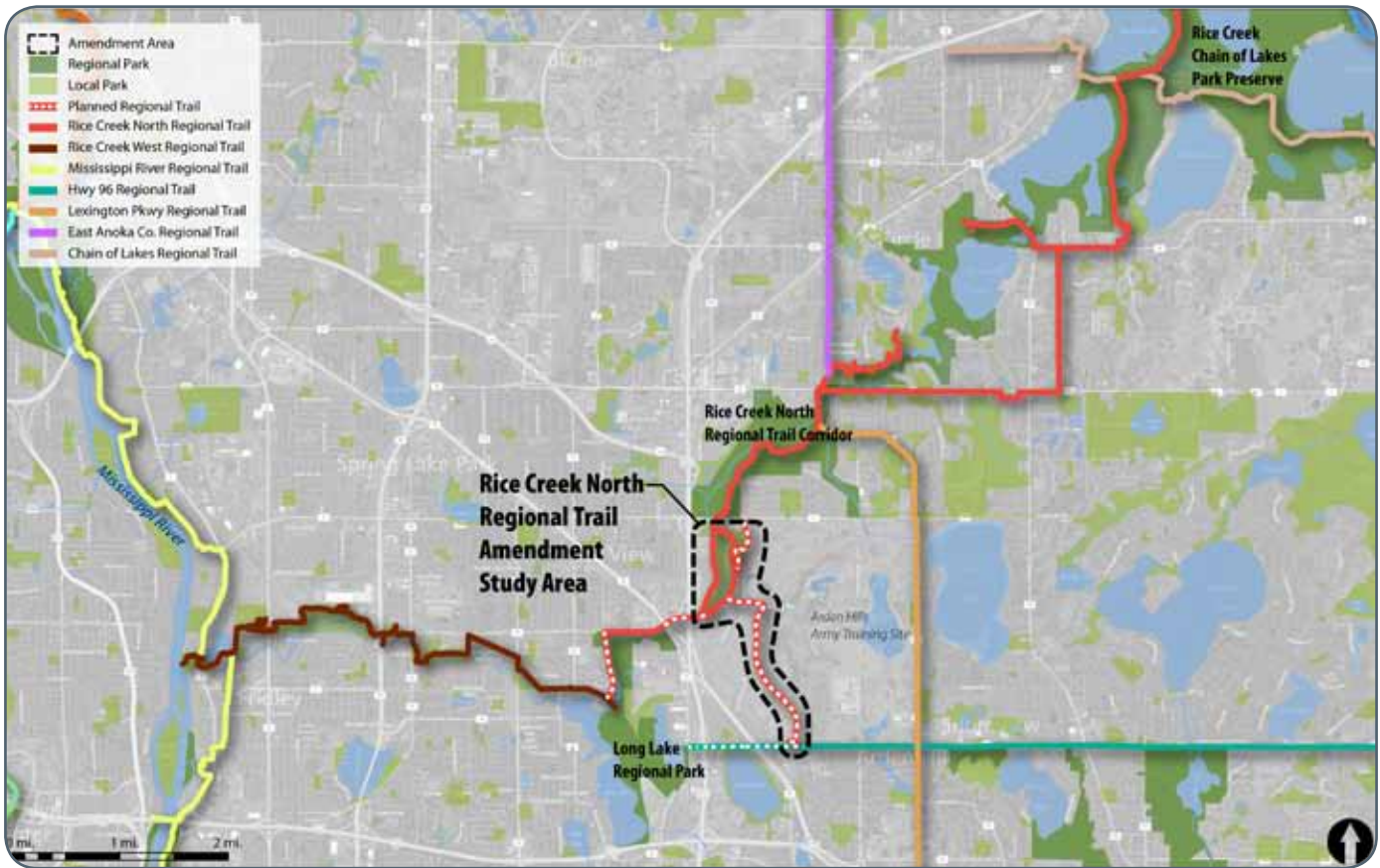


Figure 1: Regional Trail System from the Mississippi River to the Rice Creek Chain of Lakes

governmental units to advance park, recreation, and leisure opportunities for all Ramsey County residents.

The mission of the Ramsey County Parks and Recreation Department (RCPRD) is “to enhance the quality of life for the people of Ramsey County by preserving, developing, maintaining and managing a system of parks, open space, trail corridors and special use areas; and by providing year-around recreational programs, services and facilities which are responsive to changing needs, compatible with the resource base and most effectively provided at a county level.” Ramsey County Parks and Recreation supports this mission by:

- **Open space preservation** — We acquire, protect and manage unique, fragile and aesthetically attractive natural resources that contribute positively to the urban landscape, and perform critical natural functions.
- **Nature interpretation** — We promote positive environmental values through an increased awareness, knowledge and appreciation of natural resources and natural processes.
- **Outdoor recreation programming** — We sponsor or co-sponsor recreation programs that encourage development of resource-oriented outdoor recreation skills and promote wellness. We

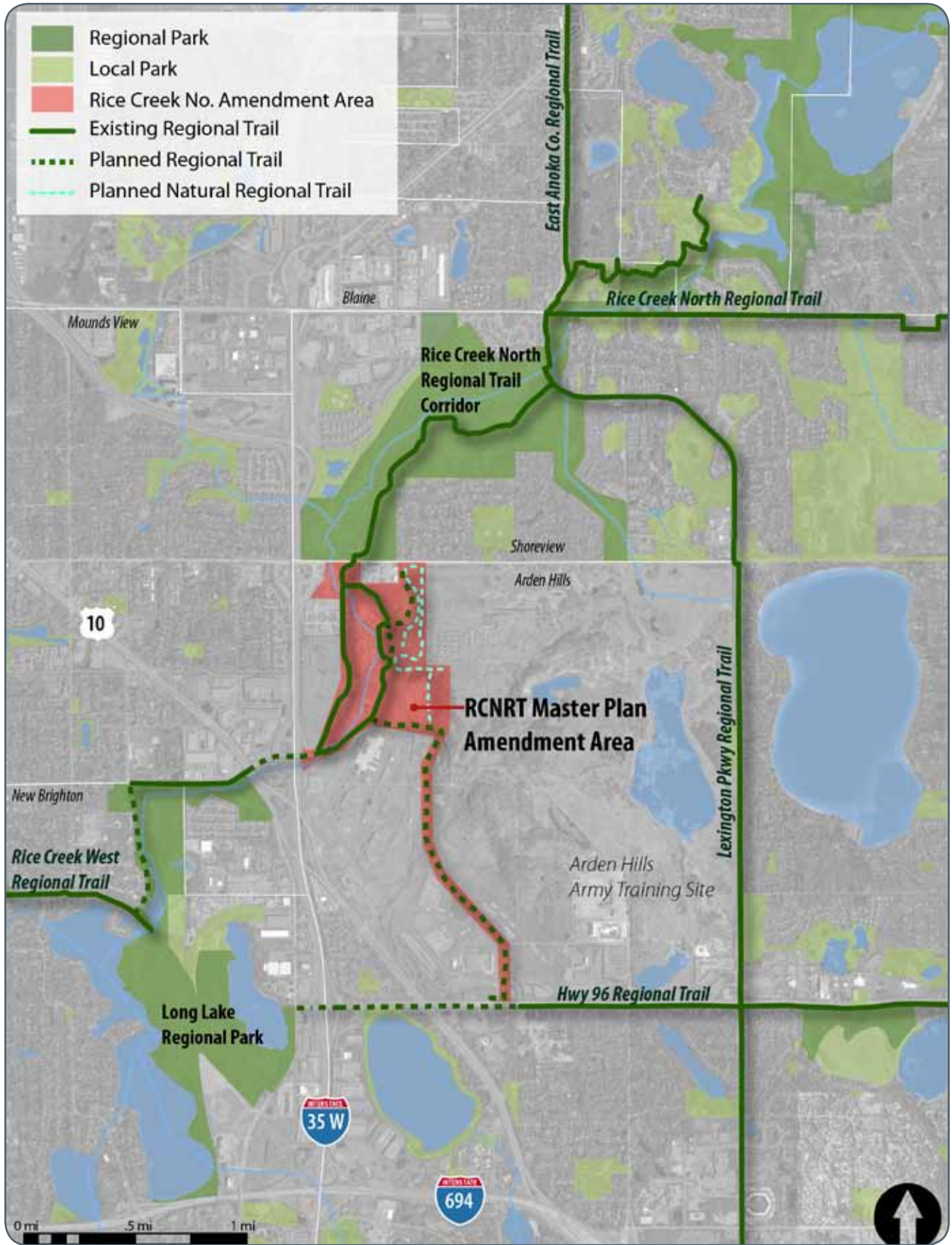


Figure 2: Regional Trail System around the Rice Creek North Regional Trail



also organize special events that introduce people to recreation opportunities available within the system.

- **Special recreation services** — We provide areas, facilities and programs of Ramsey County-wide significance to meet specialized indoor or outdoor recreation needs of Ramsey County residents.
- **Park services** — We provide diverse and accessible areas and facilities primarily for self-directed Ramsey County resource-oriented outdoor recreation that complement the natural features of each site.
- **Trail services** — We coordinate establishment of a Ramsey County-wide system hiking and biking trails plan that connect significant natural and cultural features and implement those segments of county or regional significance that are located on Ramsey County park and open space land.

## History

The 14 mile Rice Creek North Regional Trail extends from Rice Creek West Regional Trail at Long Lake Regional Park to Rice Creek Lake Chain of Lakes Regional Trail in Anoka County. Development of the Ramsey County segment of the Rice Creek North Regional Trail has occurred as opportunities arose. The amendment area represents the central portion of the Ramsey County segment of the Rice Creek North Regional Trail corridor extending approximately from County Road H to County Road I just east of Interstate 35W, as well as a trail extension to Highway 96. This central portion has been available for acquisition and development only in the last decade due to the decommissioning of the Twin Cities Army Ammunition Plant (TCAAP) property and its availability for other uses.

At its largest extent, the TCAAP property occupied 2,370 acres in the northern third of Arden Hills. It was bounded by Highway 96 on the south, Highways 10 and 35W on the west, Lexington Avenue on the north and County Road I on the north. The development and operation of the TCAAP site as a federal small arms ammunition plant began in 1941 and lasted until 1976. The site was developed with more than 300 buildings and at its peak had 26,000 workers, 37 miles of roads, 83 miles of sewer, and 40 miles of electric and telephone. Between 1974 and 1985 the federal government started decommissioning the property. Production of special munitions continued on a limited basis in some areas until 2005.

According to the City of Arden Hills Comprehensive Plan, plans for the transfer and redevelopment of the property began in the 1980s. Over the years these plans have evolved and become more detailed. In 1996 the TCAAP Framework Plan (commonly referred to as the Vento Plan) was developed by the TCAAP Reutilization Commission appointed by Congressman Bruce Vento. In 2002 the City of Arden Hills worked with Ryan Development and its partners on a redevelopment plan (commonly called the Ryan Plan) that was ultimately withdrawn due to economic infeasibility in the recession. While significant redevelopment has yet to occur, much of



*One of the TCAAP structures that will need to be removed from the Rice Creek North Regional Trail Corridor property.*



Figure 3: Evolution of the Rice Creek North Regional Trail Corridor

the TCAAP property has been transferred or leased to other public entities.

The 1998 Rice Creek North Master Plan identified 113 acres of TCAAP property to be acquired for the regional trail corridor. Located in the northwestern corner of TCAAP, the property includes Rice Creek, an archaeological area, and wildlife habitat. This property was transferred to Ramsey County in 2006 by the National Park Service as part of the Federal Lands to Park Program. Ramsey County is obligated to make the site available for public recreational use, as well as preserve and protect the one acre archeological site located on the property. A trail and trail bridge has been constructed on this property.

The 2003 Rice Creek North Regional Trail Master Plan Amendment and 2006 Ramsey County System Plan identified an additional 49 acres of TCAAP property to be acquired as a wildlife corridor. The wildlife corridor is considered a critical link to the 1,500 acre Arden Hills Army Training Site (AHATS).

In 2012, a Joint Powers Agreement (JPA) established a partnership between Ramsey County and the City of Arden Hills with the goal of the remediation and productive reuse of the remaining 427-acre TCAAP site. Ramsey County

has purchased the TCAAP site from the U.S. Government and is working with Bolander and Sons to remediate the site to residential standards including the demolition of the remaining buildings.

As part of these most recent negotiations, an additional 60 acres is proposed to be transferred to Ramsey County Parks and Recreation for the Rice Creek North Regional Trail Corridor to be added to the wildlife corridor area. This area extends to County Road I and will facilitate the construction of a trailhead entry driveway and additional trails. Also added is a 150 foot corridor that will establish a trail and prairie corridor to Highway 96 on the south. The acquisition and development of these parcels is the new portion of the Rice Creek North Regional Trail Amendment.

## **Citizen Participation and Municipal Support**

The development of the Rice Creek North Regional Trail has been evolving since the 1970s when Ramsey County first developed a preservation and recreation concept for the Rice Creek corridor. Specific planning around this segment of the Rice Creek North Regional Trail became more extensive once the decommissioning and redevelopment of TCAAP became a reality. Numerous opportunities for public involvement have occurred both as part of the ongoing Ramsey County Parks and Recreation planning efforts and as part of the larger TCAAP redevelopment discussions.

As part of this amendment process, Ramsey County Parks and Recreation presented the Master Plan Concept as part of an informational meeting held by the City of Arden Hills on the demolition and remediation to occur as part of the TCAAP project. This May 7, 2013 meeting was attended by 200 people. Comments collected were reviewed and addressed by Staff where possible. Most attendees were supportive of the Master Plan Concept. Many residents were interested in improved connectivity and expressed concerns about reduced access due to current demolition and remediation on the TCAAP site.

The Master Plan Concept, along with the ability for public comment, was posted on the Ramsey County Parks and Recreation website from May 13 to July 8th, 2013.

Ramsey County Parks and Recreation department closely coordinated with the City of Arden Hills and the City of Shoreview. The draft concept plan was distributed to staff at both cities in May 2013 for initial review and input. The Draft Master Plan Amendment was presented to the Arden Hills City Council on June 24th, 2013, to the Shoreview Parks and Recreation Commission on June 27th 2013, and to the Shoreview City Council on July 1, 2013. The Arden Hills and the Shoreview City Councils both passed resolutions in support of this amendment, included in Appendix B.



*According to Metropolitan Council, two-thirds of people using recreational facilities are using trails.*



**Table 1 Metropolitan Council 2011 Annual Use Estimate**

REGIONAL PARK OR TRAIL	SUMMER VISITS	WINTER VISITS	SPRING/FALL VISITS	OTHER VISITS	TOTAL VISITS
<b>RAMSEY COUNTY</b>					
Rice Creek North Regional Trail	79,300	24,300	104,400	0	207,900
Rice Creek West Regional Trail	56,700	17,300	74,600	1,900	150,500
Highway 96 Regional Trail	182,000	55,700	239,700	2,900	480,400
Long Lake Regional Park	207,400	36,900	198,500	29,000	471,700
<b>ANOKA COUNTY</b>					
Rice Creek North Regional Trail	28,100	8,600	37,000	0	73,600
Rice Creek West Regional Trail	135,600	41,500	178,600	300	355,900
Rice Creek Chain of Lakes Park Reserve	146,900	26,100	140,500	57,400	401,400

**Table 2 Population Projections**

	2010	2030	PERCENT CHANGE
Arden Hills	9,552	12,900	26%
Mounds View	12,155	13,400	9%
New Brighton	21,456	22,800	6%
Shoreview	25,043	29,000	14%

## **Demand Forecast**

The expansion of the Rice Creek North Regional Trail enhances recreational opportunities and protection of natural areas. The development of the regional trail has occurred as opportunities arise with each new segment eliminating gaps and increasing the overall attractiveness of the corridor for recreational use. It is anticipated that this section of the Rice Creek North Regional Trail will have visitor demand similar to other nearby components of the regional trail system (Table 1). The use of the Rice Creek North Regional Trail is anticipated to continue to rise due to urban recreation trends and the anticipated population growth of the trail service area. Trails are the number one desired recreation facility in poll after poll due to their ability to be enjoyed by people of all ages, abilities and income. According to the 2008 Metropolitan Council Regional Parks and Trails Survey, among regional trail users, biking and walking are the most common recreation form, while running, inline skating, and dog-walking were also popular.

Growth in the Rice Creek North Regional Trail is also anticipated due to the population growth of the surrounding communities. Metropolitan Council studies indicate that 1/2 of regional trail users live within 3/4 mile of a trail (core service area) and 3/4 live within 3 miles of the trail (primary service area). As shown in the Table 2, the communities surrounding this segment of the Rice Creek North Regional Trail are all anticipated to increase by 2030.

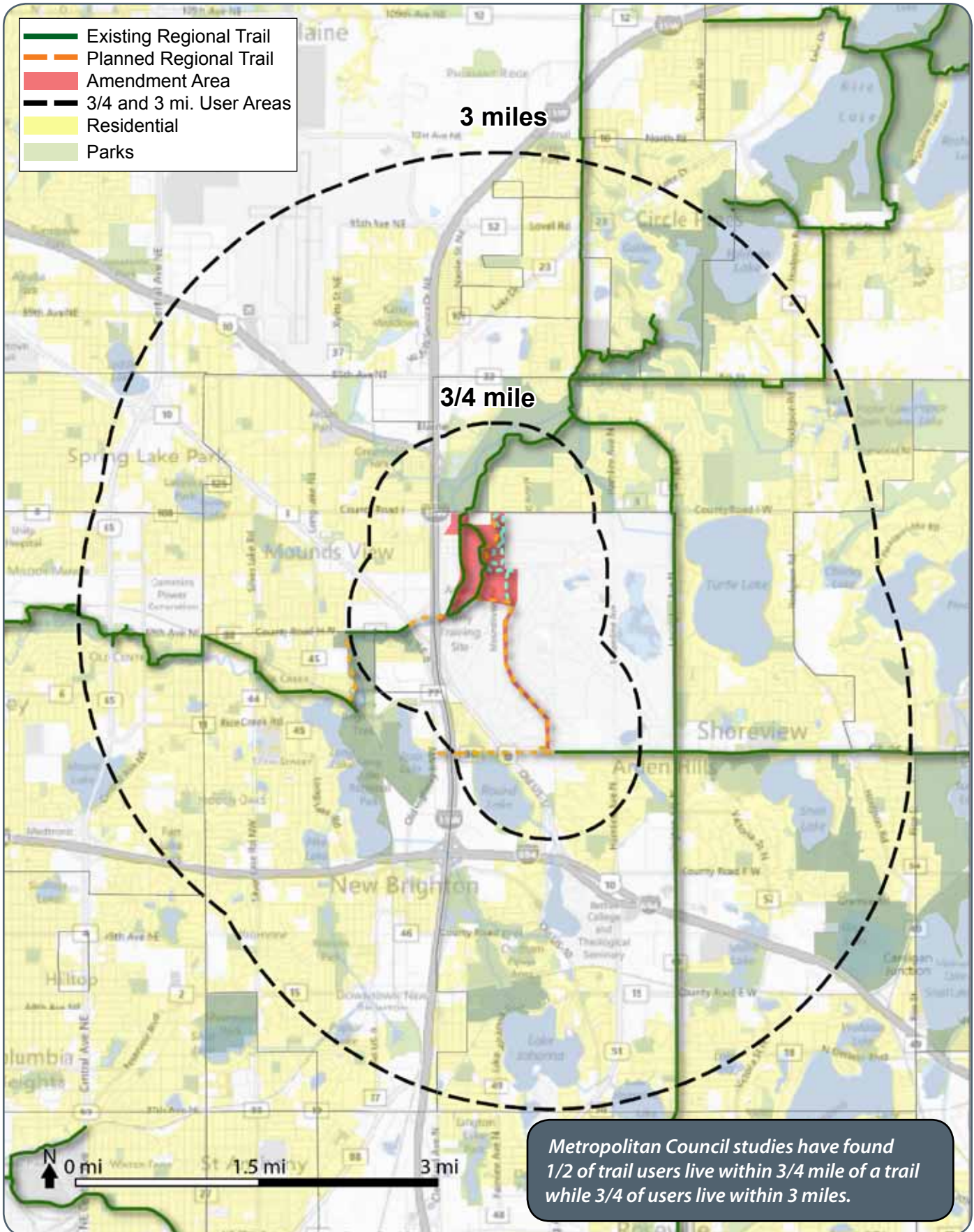


Figure 4: Rice Creek North Regional Trail 3/4 Mile and 3 Mile Service Areas

The most significant growth, located in Arden Hills is anticipated to occur in the area immediately adjacent to the amendment area as part of the redevelopment of the 427 acres in TCAAP. The City of Arden Hills, in partnership with Ramsey County as part of the Joint Development Authority, is in the process of revising the master plan for the site, preparing an Alternative Urban Areawide Review (AUAR), and preparing development regulations to support the redevelopment of the site. A portion of the site will be undergoing a 30 month environmental remediation that will be complete in 2015. When development occurs the site is anticipated to have a mixture of commercial and residential uses. It is anticipated that park and open space areas within the TCAAP redevelopment area will connect to the Rice Creek North Regional Trail corridor.

## EXISTING CONDITIONS

### Boundaries and Acquisition Costs

The Rice Creek North Regional Trail Connection links the Rice Creek North Regional Trail west and south to the regional trail system. Going west, users will travel an off-road trail adjacent to County Road H that will go over Interstate 35W and cross Highway 10 at-grade. To the south, users will be able to reach the Highway 96 Regional Trail. The eastern boundary of the Rice Creek North Regional Trail Connection is defined by the Arden Hills Army Training Site (AHATS). This boundary will be secured by fencing. The trail corridor runs along the AHATS boundary in a 150' wide natural swath from the existing Rice Creek Trail to Highway 96.

There is also an additional acquisition of land to extend the greenway north from the proposed parking/staging/trailhead area to Hwy I (TCAAP Parcels B&C). This area will also be fenced to the east to limit access into AHATS. Long term plans supported by the Minnesota Amateur Sports Commission would extend some winter access into the AHATS property for cross country skiing. This site is important for increasing the habitat area and connectivity between existing restorations on site, Rice Creek Chain of Lakes Regional Park and AHATS, which acts as a nature preserve.

The purchase price of the land will only consist of site preparation costs. The property will be transferred from the Army to the National Park Service to Ramsey County as long as Ramsey County brings the property to a suitable development level. This will involve Ramsey County demolishing structures on the site and completing soil remediation prior to the transfer. In March 2012 site preparation costs were estimated at \$615,000, this includes \$205,000 for demolition and \$410,000 for soil remediation.



*Acquisition proposed in the 2013 amendment.*



*Vegetation within the corridor is a mix of grasslands with patches of deciduous forest and woodlands.*



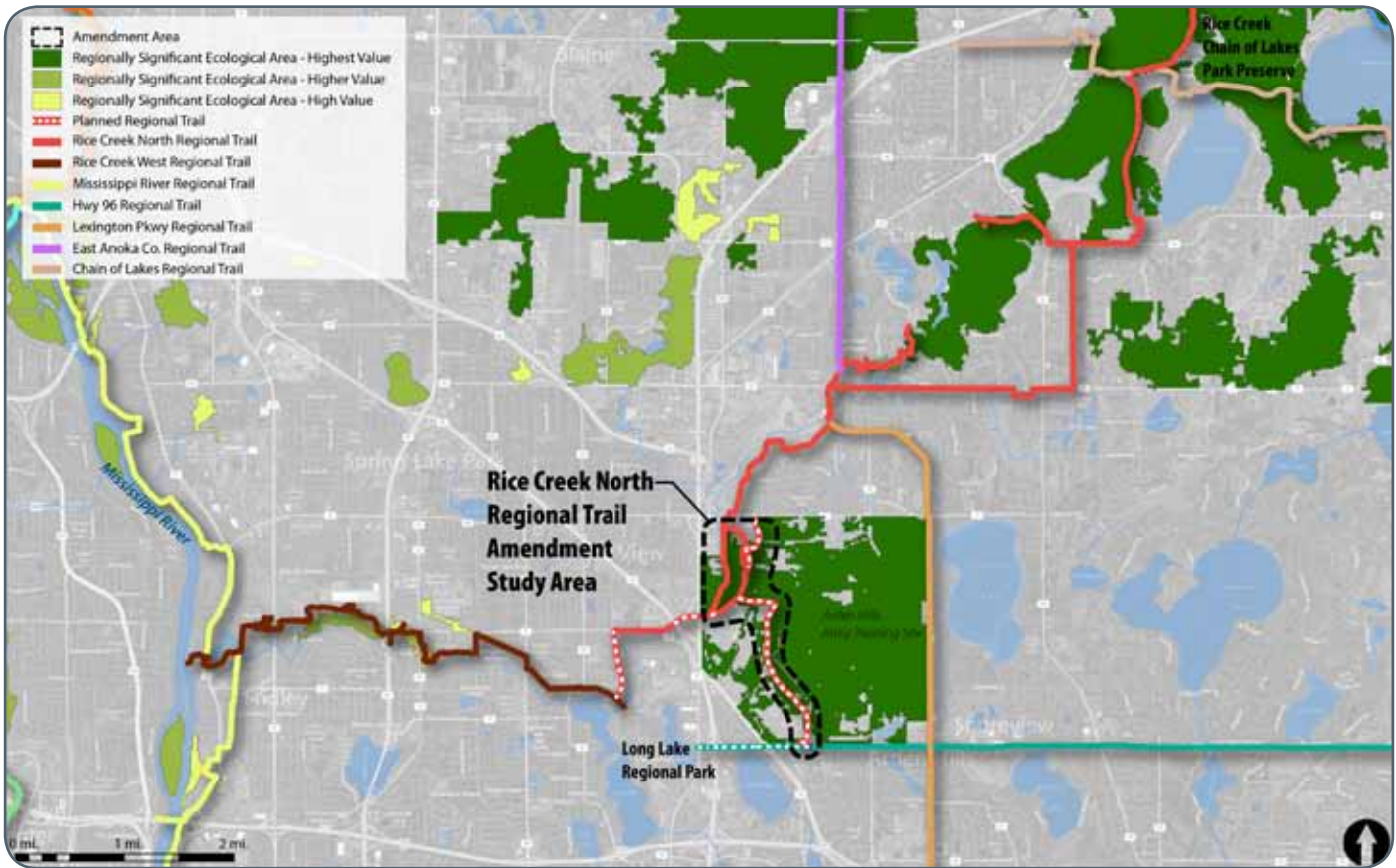


Figure 5: Metropolitan Council's Regionally Significant Natural Resource Areas

## Natural Resources Inventory

### Ecological Significance

Metropolitan Council has identified Regionally Significant Natural Resource Areas based on ecological attributes including patch size, shape, cover type, diversity, and adjacent land use. Rice Creek North Regional Trail Connection provides a critical link between several areas identified as Regionally Significant: the Rice Creek Chain of Lakes Regional Park, the AHATS property, and Long Lake Regional Park.

### Land Cover

Existing vegetation, as classified by the Minnesota Land Cover Classification System is a mix of floodplain, grasslands with patches of deciduous forest and woodlands. Much of the natural vegetation has been highly degraded from past use as an army munitions plant and channelization of Rice Creek. Invasive species have become widespread. The most troublesome species are reed canary grass. There are some areas of restored prairie in the amendment area.



Rice Creek is the dominant water feature within the corridor.



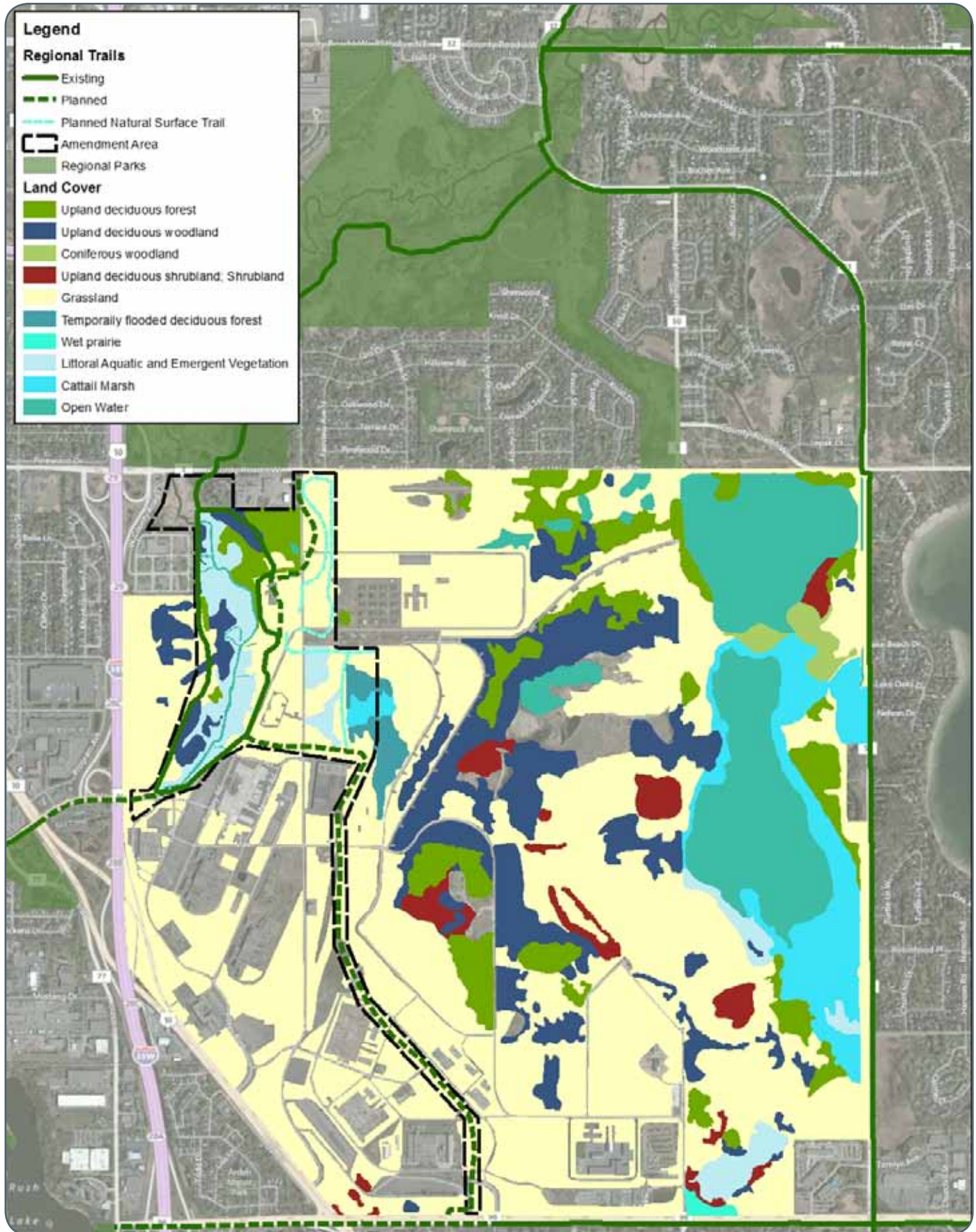


Figure 6: Minnesota Land Cover Classification System (MLCCS)



*Buildings on the site will be torn down and contamination addressed before the site is available for recreational use.*

### **Water Resources**

Rice Creek is the dominant natural feature in the amendment area. Rice Creek originates in Clear Lake south of Forest Lake, MN and flows for 28 miles southwest to the Mississippi River in Fridley. Sections of the creek have been straightened and the creek is identified in the 2010 Rice Creek Watershed Management plan as impaired for aquatic life. During times of high waterflow, the creek provides an excellent watercourse for canoeing. The USGS maintains the water flow and posts readings to the general public on their website. Suggested waterflow ranges have been established that are suitable for water trail users. Rice Creek meanders have been restored in the Shoreview Unit of the trail corridor, but not in the amendment area.

### **Topography**

The topography of the corridor is a shallow valley and flood plain near the creek with short embankments (8%-12% slopes) and gently rolling plateaus and steep sided knolls and ridges (10%-30% slopes) between elevations 900-910.

### **Wildlife**

The 49-acre wildlife corridor provides an important wildlife connection between AHATS and Rice Creek. The amendment area provides important habitat for birds, small mammals, and invertebrates, as well as several osprey nesting sites in the area.

## **Historic Resources Inventory**

### **Archaeological Site**

Inside of the existing loop trail and approximately 600 feet west of the proposed trailhead is an archaeological sensitive area. Pre-contact American Indian artifacts include both pottery and lithics (AUAR 2007). Recreation development in the amendment area will not have any impact on the archeological sensitive area.

### **TCAAP Buildings**

With the redevelopment of the TCAAP site, the existing buildings and structures will be torn down. Contamination and changes in land use make retaining these structures within the regional trail corridor and natural areas problematic. The story of TCAAP should instead be told through interpretive signage and other methods.



*Plans include the expansion of the existing bituminous trails*



# THE PLAN

## Development Concept

The Rice Creek North Regional Trail Connection will link growing populations to and expand the regional trail network for recreation and non-motorized transportation. It will also provide natural habitat areas and expand opportunities for natural resource based recreation.

The trail connects into the existing regional and local trail network:

- Highway 96 Regional Trail
- Rice Creek North Regional Trail
- Local trail along Hwy I
- Future Cross Country Skiing Trails

## Recreation Development

Recreation development in the Rice Creek North Trail Connection area will include:

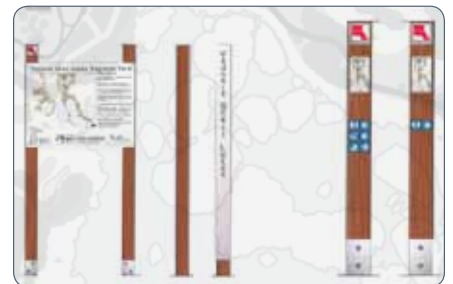
- Bituminous Trail (12,000 LF)
- Natural Surface Trail (9,000 LF) for hiking
- Trailhead building with rest rooms
- Parking (100 stalls)
- Site amenities
- Entry drive
- Improved trail connections to Rice Creek
- Habitat restoration
- Wayfinding signage
- Potential cross country ski trails in conjunction with development of ski trails on the adjacent AHATS property
- Canoe/kayak access

The most significant expansion of bituminous trail in the amendment area will be the Rice Creek North Regional Trail Connection. This 1.5 mile long trail will extend from the existing wildlife area to Highway 96. The trail will be constructed within a 150' corridor that will follow the western edge of the AHATS property.

New bituminous trail will also link the proposed trailhead and parking area north to County Road I. An at-grade trail crossing will be needed at County Road I for pedestrian and cyclist safety.



*The creation of a trailhead parking lot and entry drive will eliminate the need for users to cross County Road I from the existing parking lot to access this portion of the regional trail.*



*Signage, as shown in the Ramsey County Wayfinding Masterplan, will help increase public awareness as the trail is expanded.*

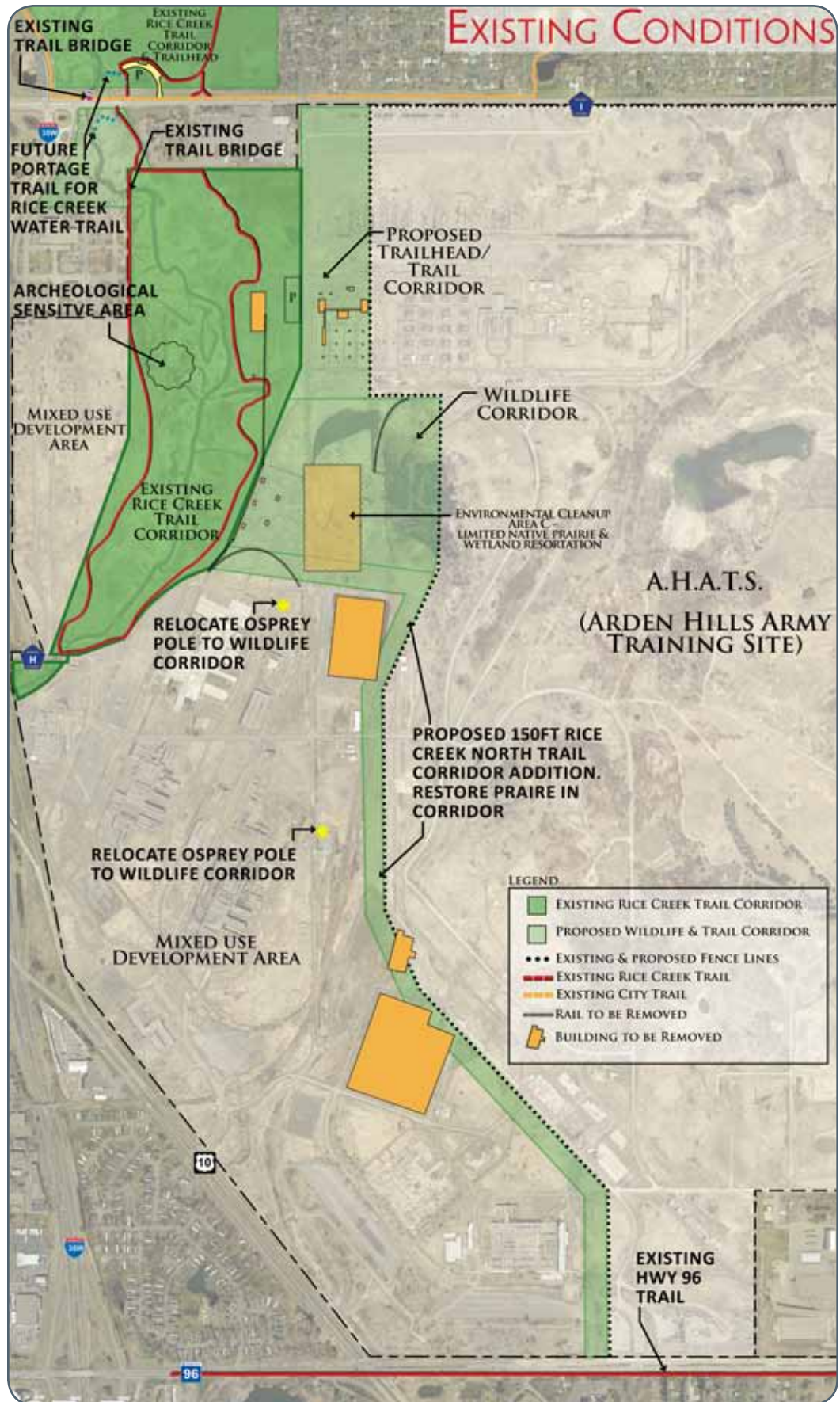


Figure 7: Existing Conditions



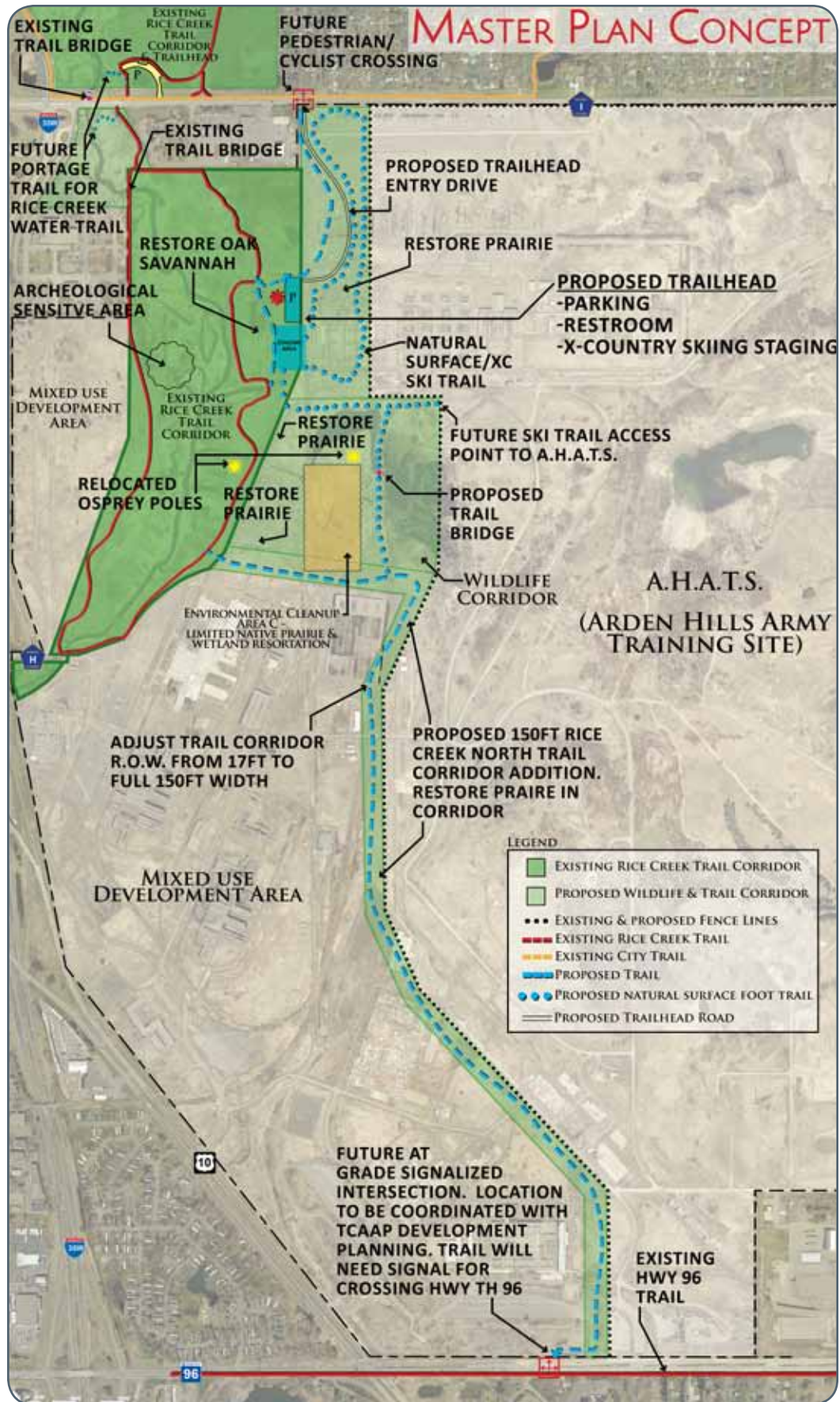


Figure 8: Master Plan Development Concept





*The corridor provides habitat for birds, small mammals and invertebrates.*

Approximately 9,000 feet of natural surface trail is planned to create a walking/cross country skiing loop that will connect into a future cross country trail system. This will be accomplished working in conjunction with AHATS and supported by the Minnesota Amateur Sports Commission. The natural trail surface will give users the opportunity to walk and ski through restored prairie and Rice Creek wetlands.

A trailhead with a building and redeveloped parking lot will support trail uses. There will be 100 spaces of parking, restrooms, signage, site amenities, and equipment storage.

### **Road Crossings**

The Rice Creek North Regional Trail Connection will cross a proposed service road to access a future electrical substation. This crossing will be at grade. Stop signs will stop service vehicles before crossing the trail. Additional signage along the trail and the road will notify drivers and trail users of the intersection and to use caution.

At grade crossing improvements are also anticipated at County Road I and Highway 96. The County will work with appropriate jurisdictions on design of these crossings.

### **Lighting**

Consistent with other Ramsey County regional trails, lighting will be provided at the trailhead and parking lot areas. At this time, no trail lighting is anticipated.

### **Wayfinding**

Wayfinding is the way people navigate from place to place. A consistent wayfinding system is essential for orientation, navigation and safety. Signage should be consistent across the system and should guide greenway users to local services, cultural destinations, transportation connections, activity centers, recreation destinations, cities, neighborhoods and other landmarks. The Rice Creek North Regional Trail will utilize the existing RCPRD Master Plan for consistency with other regional parks and trails.

## **Stewardship Plan**

The Rice Creek North Regional Trail Connection will be restored and managed according to the 2008 Ramsey County Parks and Recreation Natural Resource Management Plan.

### **Vegetation**

The Rice Creek North has been identified as a priority area to restore to a combination of wetland, prairie and savannah habitats.

Prairies will be maintained with prescribed fire and invasive species, will be controlled on a variety of habitats with herbicides and bio-control. Bio-control efforts are done in partnership with the Minnesota Department

of Agriculture (MDA) and Minnesota Department of Natural Resources (MNDNR). Habitat management assistance may also be provided by the Conservation Corps of Minnesota (CCM).

### **Wildlife Management**

The Rice Creek North Regional Trail area hosts a diverse variety of wildlife. Birds include nesting songbirds, waterfowl, and raptors. Larger mammals include white-tailed deer, otter, coyotes, red fox and raccoons.

The deer population is annually surveyed. If needed the deer herd will be managed with special hunts under the Ramsey County Cooperative Deer Management Plan in partnership with New Brighton, Mounds View, Arden Hills and Shoreview.

Nest boxes are provided for wood ducks and eastern bluebirds and nesting towers for osprey.

### **Water Resources**

The 2010 Rice Creek Watershed Management Plan identifies restoration for Middle Rice Creek as a capital improvement project. This project would involve the restoration or re-meandering of more than 16,000 feet of Rice Creek from Howard Lake to the Mississippi River. The intent of the project is to increase recreational use of Rice Creek as a regional water trail and to reverse the consequences of past efforts to reduce flooding and 'control' Rice Creek through channelization. Channelization is believed to have resulted in an increase in sedimentation downstream within Long Lake, the loss of fish and wildlife habitat, and an increased in downstream flood flows. Implementation will be a joint effort between the RCWD, Anoka County, Ramsey County, the National Park Service, and the Friends of the Mississippi River.

## **Public Services**

No significant new public services will be needed to accommodate the development of the Rice Creek North Regional Trail Connection. The proposed trailhead and parking lot will be accessed from County Road I. As the park is established and visitor use increase, the intersection will need to be reviewed regularly to determine whether intersection improvements are needed to accommodate traffic volumes and preserve motorized and non-motorized transportation safety.

Water and sanitary sewer services are planned to serve the restrooms at the trailhead area. The trailhead facility is planned for construction in the RCPRD appropriation for the Parks and Trails Legacy Amendment Funding for 2018/2019. All existing sewer and water mains to the existing buildings on the property are planned to be abandoned. It is anticipated that sewer and water will be extended from mains on County Road I in conjunction with the restroom construction.



*Benches are located frequently along the Rice Creek Trail to support universal accessibility of the trail.*

**Table 3 Development Cost Estimates**

ITEM	COST
Acquisition*	\$615,000
Parking Lot Reconstruction (100 cars)	\$151,732
Entrance Road	\$256,342
Trail Connections (12,700 linear feet)	\$362,010
Landscape Restoration	\$276,100
Site Amenities (benches, trash receptacles, bike racks, site signs, interpretative signs)	\$27,940
Trailhead Building	\$275,000
Utility Extension (2,000 linear feet)	\$572,000
Other Site Improvements (remove existing bituminous, fencing)	\$619,355
<b>Total</b>	<b>\$3,155,479</b>

\*Acquisition costs include \$205,000 for site demolition and \$410,000 for soil remediation.

## Conflicts

No major conflicts will affect the viability of the master plan amendment recommendations. Adjacent land uses include future mixed use development and the Arden Hills Army Training Site (AHATS). AHATS will be separated from the trail corridor by a fence with very limited access into the AHATS site. A portion of the trail corridor will also be collocated with high tension power lines. One access road is necessary for crossing the trail to get to a substation, and will be managed to have minimal impact on trail use.

## Accessibility

RCPRD is committed to providing universal accessibility at all trail facilities. Ramsey County is part of the Ramsey County Active Living Communities partnership which works to bring about and sustain changes in design, transportation, and public/private policies to cultivate and support a way of life that physical activity in our neighborhood and community safer and easier. Care will be taken to design facilities that meet the requirements for the American with Disabilities Act (ADA), as well as principles for universal accessibility so as to provide all visitors with a meaningful experience.



*Ramsey County Parks and Recreation will be responsible for regular maintenance activities like trail bridge repair.*



Table 4 Operations Cost Estimates

RICE CREEK NORTH REGIONAL TRAIL	
Existing (per current operation/maintenance conditions)	\$30,000
Future (when fully developed per development identified above)	\$58,000

## IMPLEMENTATION

### Phasing and Priorities

The first phase of the master plan is removal of existing buildings. This phase is planned for 2014 and will be completed in conjunction with clean up of the larger TCAAP site. Construction of the trail itself is anticipated to take place in 2015/16. The building is in the County's Capital Improvement Plan for 2018/19.

Longer term development will include local connections along with future residential development and the future cross country ski facility for the Minnesota Amateur Sports Commission. Both of these additions will bring new users to the Rice Creek North Regional Trail. Natural resources projects conducted by RCPRD will be timed with development components.

### Operations

Operations of the regional trail corridor will be the responsibility of the RCPRD. Operations will continue to be handled as outlined in the Operation Details section of the 1998 Rice Creek North Regional Trail Corridor Master Plan. As stated in that plan, operation and maintenance services will be provided at a level that is appropriate for the designated use and consistent with the current phase of development. The level of services will be directly influenced by budget limitations and the County's operation and maintenance policies. Funding for maintenance and operation is appropriated from County tax revenue, supplemented by State appropriation for Regional Parks Operation and Maintenance Funding.

#### Operating hours

Regional parks and trails have general operating hours from ½ hour before sunrise to ½ hour after sunset.

#### Ordinances

Public use and enjoyment of the County park system is controlled by "An Ordinance for the Control and Management of Park, Recreation and Open Space Areas and Facilities under the Jurisdiction of the Ramsey County Board of Commissioners." This Ordinance, adopted in 1992 and amended in 2007, will govern the conduct of the public during the use of the regional trail corridor, its facilities, and resources. The ordinance, provided in the



*Ramsey County Sheriff's Department is the primary agency charged with enforcement and safety in the trail corridor.*

appendix, incorporates pertinent Minnesota statutes and includes the following sections:

1. Purpose/Definitions
2. Regulations of Public Use
3. General Conduct
4. Regulation of Recreation Activity
5. Regulation of Motorized Vehicles, Traffic and Parking
6. Enforcement
7. Miscellaneous
8. Effective Date

### ***Enforcement and safety***

The RCPRD, in conjunction with the Ramsey County Sheriff's Department, will educate and direct the public in appropriate use, provide ordinance enforcement, assist with first aid, and ensure security along the regional trail. The Ramsey County Sheriff will be responsible for enforcement of park hours. All trailhead access roads are equipped with gates that can be controlled to limit access. RCPRD will supplement the regular Sheriff's Department patrol as needed. Fire services as needed are provided by the Lake Johanna Fire Department.

### **Public Awareness**

RCPRD will use a variety of tools to promote awareness and use of the regional trail system. This includes electronic and print communication methods such as websites, trail maps, brochures, email notification, Twitter, Facebook, and press releases to local newspapers. The department will ensure it is listed on Go Ramsey Communities, an interactive web-based mapping application that allows users to locate places to be active in the county. Ramsey County will also collaborate with Arden Hills, Shoreview, New Brighton, Mounds View, and the Metropolitan Council to promote the trails through their websites, newsletters, and brochures. Wayfinding signage within the trail corridor will be updated as needed following the existing RCPRD Wayfinding Master Plan for consistency with other regional parks and trails.



# APPENDIX A - ORDINANCES

## AN ORDINANCE FOR THE CONTROL AND MANAGEMENT OF PARK, RECREATION AND OPEN SPACE AREAS AND FACILITIES UNDER THE JURISDICTION OF THE RAMSEY COUNTY BOARD OF COMMISSIONERS

The County Board of Ramsey County ordains:

### CHAPTER I — PURPOSE/DEFINITIONS

#### SECTION A — PURPOSE

This ordinance has been enacted pursuant to Chapter 383A, Laws of Minnesota, as amended, which authorizes the Ramsey County Board of Commissioners to enact ordinances to govern the conduct of members of the public during their use and enjoyment of the Ramsey County Parks and Recreation system so as to further the safety, health, enjoyment and welfare of all persons in the use thereof, and to protect public property and resources for posterity.

#### SECTION B — DEFINITIONS

1. "Agent" shall mean any unpaid volunteers and any person employed or hired by a contractor, concessionaire, or other person or firm to perform in a park or on other open space property at the request or under contract with the County of Ramsey.
2. "Amusement contraptions" means any contrivance, device, gadget, machine or structure designed to test the skill or strength of the user or to provide the user with any sort of ride, lift, swing or fall experience including, but not limited to, ball-throwing contest device, pinball-type devices, animal ride devices, dunk tank, ball and hammer devices, trampoline devices and the like.
3. "Board" shall mean and refer to the Ramsey County Board of Commissioners.
4. "Controlled substance" means any drug, substance or immediate precursor in schedules 1 through 5 of Minnesota Statutes, Section 152.02.
5. "Department" shall mean and refer to the Ramsey County Parks and Recreation Department.
6. "Director" shall mean and refer to the Director of Parks and Recreation — that person authorized by the Board to direct and administer the Parks and Recreation Department.
7. "Employee" shall mean any full-time, part-time, permanent or temporary worker in the employ of the Department. "Employee" shall also include unpaid volunteers and any person employed or hired by a contractor, concessionaire, or other person or firm to perform work in a park or on open space property at the request of or under contract with the County of Ramsey."
8. "Motor vehicle" means a self-propelled vehicle or vehicle propelled or drawn by a self-propelled vehicle which is operated on a highway, on the ground, in water, or in the air. Motor vehicle does not include any vehicle which operates exclusively upon railroad tracks.
9. "Motorized recreation vehicle" means any self-propelled, off-the-road or all-terrain vehicle including, but not limited to, snowmobile, mini-bike, amphibious vehicle, motorcycle, go-cart, trail bike, dune buggy or all-terrain cycle.
10. "Natural resources" shall mean all flora and fauna within a park and the physical factors on which they depend, including air, water, soil and minerals.
11. "Park" shall mean and refer to any park, open space, arena, golf course, special-use area, trail corridor or any other area owned, improved, maintained, operated or otherwise controlled by the Board for recreation or natural resource preservation purposes.
12. "Park waters" shall mean and refer to any lake, pond, river, stream or other body of water located wholly within the boundaries of a Ramsey County park or any public shoreline owned by or under the authority of the Board, including those waters lying within 300 feet of the waterfront immediately abutting park lakeshore.
13. "Peace officer" shall be as defined in Minnesota Statutes, Chapter 626.84, subdivision c.
14. "Permit" shall mean the written permission that must be obtained from the Department to carry out certain activities.
15. "Person" or "persons" shall mean individuals, firms, corporations, societies, or any group or gathering whatsoever.
16. "Pet" means any animal that is domesticated or kept as a companion.
17. "Roller-skate" is the act of riding or propelling oneself by human power or gravity on wheeled devices that are worn on a person's feet or stood upon by a person. "Roller-skates" specifically include, but are not limited to, traditional roller-skates, in-line roller-skates, roller-skis, skateboards and scooters.
18. "System" shall mean and refer to the Ramsey County Parks and Recreation system which includes the sites and facilities owned, maintained and operated by or otherwise under the authority of the Board, pursuant to Chapter 383A, Laws of Minnesota.
19. "Weapon" means any device including, but not limited to, firearms, bows, slings and spring guns from which a shot or a projectile of any type is discharged or propelled by means of an explosive, gas, compressed air, elastic or other means.
20. "Wildlife" shall mean any living creature, not human, wild by nature, including but not limited to mammals, birds, fish, amphibians, insects, reptiles, crustaceans and mollusks.

"Wine" means a vinous beverage containing not more than 14 percent alcohol by volume.

### CHAPTER II — REGULATIONS OF PUBLIC USE

#### SECTION A — PARK HOURS

1. Parks shall be open to the public during that period of time thirty (30) minutes before sunrise to thirty (30) minutes after sunset. It shall be unlawful for any person to enter or remain in a park at any other time without a use permit, except when the park area or facility hours are otherwise designated by the Director, or the park area or facility is being used as part of an authorized Department program.
2. Any section or part of any park may be declared closed to the public by the Director at any time and for any interval of time, either temporarily or at regular and stated intervals, and either entirely or for certain uses as the Director shall find necessary.

#### SECTION B — PERMITS

1. Permits shall be required for the exclusive use of all or portions of specific areas, buildings and other system facilities for conducting special events. Any person, group or association of persons required to obtain a permit shall file an application for such permit with the Director.
2. Permittee shall be bound by this ordinance and any Department regulations in force as though the same were inserted in said permit.
3. Permittee shall be liable for any loss, damage or injury sustained by the system or any person by reason of the negligence of the person or persons to whom such permits are issued.
4. Permittee shall not transfer or relinquish said permit to another person or group of persons without written authorization from the Director.
5. The Director shall have the authority to revoke a permit.
6. It shall be unlawful for any person to disturb, harass or interfere with the grantee of a valid permit, or with any of the grantee's property or equipment.

### CHAPTER III – GENERAL CONDUCT

#### SECTION A – DESTRUCTION/DEFAACEMENT OF PARK PROPERTY/SIGNS

It shall be unlawful for any person to intentionally deface, vandalize or remove park property, buildings, equipment or facilities; or intentionally deface, destroy, cover, damage or remove any placard notice, or sign or parts thereof, whether permanent or temporary, posted or exhibited by the Department.

#### SECTION B – DISTURBANCE OF NATURAL RESOURCES

It shall be unlawful for any person to:

1. Intentionally remove, alter, injure or destroy any natural resource without written authorization from the Director;
2. Dig trenches, holes or other excavation in a park without written authorization from the Director;
3. Plant or cultivate any plant, or release any animal into a park without written authorization from the Director; or
4. Remove any device, apparatus or material installed for the protection, support or preservation of any tree, shrub or plant.

#### SECTION C – DISTURBANCE OF WILDLIFE

It shall be unlawful for any person to:

1. Kill, trap, hunt, pursue, or in any manner disturb or cause to be disturbed, or have in possession any species of wildlife found within the confines of any park, except that fishing may be permitted in designated areas subject to the laws and regulations as established by the State of Minnesota; or
2. Remove any animal, living or dead, from a park without written authorization from the Director. Any animal so removed or taken contrary to the provisions of this ordinance or laws of the State of Minnesota shall be contraband and subject to seizure and confiscation.

#### SECTION D – LITTERING

It shall be unlawful for any person to deposit, scatter, drop or abandon in any park, any paper, bottles, cans, sewage, waste, trash or other debris, except in receptacles provided by the Department for such purpose. No person shall deposit in any receptacle in any park, any accumulation of waste or trash generated outside the boundaries of the park.

#### SECTION E – DISTURBING THE PEACE – CONDUCT

It shall be unlawful for any person to:

1. Use threatening, abusive, insulting, obscene or indecent language, or commit, perform or engage in any lewd, lascivious, obscene or indecent act;
2. Engage in fighting, quarreling, wrangling, raucous clamor or tumult;
3. Disturb, harass or interfere with any park user or user's property; or
4. Solicit or ask anyone to commit, perform or engage in any lewd, lascivious, obscene or indecent act of behavior.

#### SECTION F – ALCOHOL AND CONTROLLED SUBSTANCES

It shall be unlawful for any person to:



1. Use, possess or sell any alcoholic beverages in violation of Minnesota Statutes;
2. Serve, possess, or consume any alcoholic beverage except:
  - a) beer and wine in areas designated by the Director, or
  - b) by permit or concessionaire agreement approved by the Board.
3. Consume or possess any alcoholic beverage at sites where the Department or its agent is a licensed vendor of alcoholic beverages unless purchased at that site;
4. Possess or bring beer or wine into a park in kegs, barrels or other tap quantities, except as authorized by special permit; or
5. Use, manufacture, possess, sell, give away, barter, exchange, distribute or otherwise transfer any controlled substance, except on a lawful prescription by a person licensed by law to prescribe and administer controlled substances.

#### SECTION G – GAMBLING

It shall be unlawful for any person to gamble or participate in any game of chance for a consideration of items of value, except as may be permitted by the Board in accordance with Minnesota Statutes.

#### SECTION H – POSSESSION AND USE OF FIREARMS/DANGEROUS WEAPONS/FIREWORKS

It shall be unlawful for any person to:

1. Possess within park property, fire or discharge, or cause to be fired or discharged across, in or into any portion of the park, any gun or firearm, spear, bow and arrow, crossbow, sling shot, air or gas weapon, or any other dangerous weapon or projectile, except for purposes designated by the Board in areas and at times designated by the Board;
2. Possess, set off or attempt to set off or ignite any firecracker, fireworks, smoke bombs, rockets, black powder guns or other pyrotechnics without authorization from the Director; or
3. Possess or carry in any park, any airgun, bow and arrow, knife with a blade three (3) or more inches in length, slingshot, dart or projectile thrower, or any other dangerous or illegal weapon.

Nothing in this section shall be construed to prevent the recreational use of bow and arrows on officially established target ranges. Any unauthorized or illegal weapon within a park shall be subject to seizure by a peace officer.

#### SECTION I – AUDIO DEVICES

It shall be unlawful for any person to operate or play any musical instrument, radio, television, record or tape player, loudspeaker, public address system or sound amplifying equipment of any kind in any park in such a manner that the sound emanating therefrom is audible beyond fifty (50) feet of the set or instrument and, subsequently, interferes with use of the park by others or disturbs the residents of adjacent properties.

#### SECTION J – LOITERING

It shall be unlawful for any person to:

1. Enter any comfort station or restroom, washroom or toilet facilities set apart or designated for the opposite sex, except a minor in the custody and under the supervision of a parent or guardian, or a person attending to or assisting a handicapped person; or
2. Lurk or loiter in or around the toilet or other system facility, except to use or wait for an accompanying person using such facility for the purpose for which it is intended.

#### SECTION K – PARADES/ENTERTAINMENT/PUBLIC MEETINGS

It shall be unlawful for any person to conduct processions, parades, pageants, ceremonies exhibitions, celebrations, training exercises, speeches, entertainment or other public gatherings through or in any park, except with written authorization of the Director.

#### SECTION L - COMMERCIAL USE/SOLICITATION/ADVERTISING/PHOTOGRAPHY

It shall be unlawful for any person to:

1. Solicit, sell or otherwise peddle any goods, ware, merchandise, services, liquids or edibles in a park, except by authorized concession or written authorization from the Director;
2. Operate a still, motion picture, video or other camera for commercial purposes in a park without written authorization from the Director; or
3. Expose, distribute or place any sign, advertisement, notice, poster or display in a park without written authorization from the Director; or
4. Distribute or disseminate any leaflets, pamphlets, circulars, handbills, advertisements or other written or printed material without the written authorization of the Director.

#### SECTION M - SOLICITING DONATIONS

It shall be unlawful for any person to beg or solicit alms, donations or contributions within a park.

#### SECTION N - FIRES

It shall be unlawful for any person to:

1. Start or maintain a fire in any park, except small (not larger than three feet in diameter) recreational fires in fireplaces or fire rings provided for that purpose;
2. Start or maintain cooking fires, except in grills provided for that purpose. Private grills may be used in designated areas provided that all ashes and residue therefrom are disposed of in containers provided for such disposal;
3. Leave a fire unattended or fail to fully extinguish a fire; or
4. Scatter or leave unattended lighted matches, ashes, tobacco, paper or other combustible material.

#### SECTION O - AVIATION

It shall be unlawful for any person to use park property for a starting or landing field for aircraft, hot air balloons, parachutes, hang gliders or other flying apparatus without written authorization from the Director.

#### SECTION P - AMUSEMENT CONTRAPTIONS

It shall be unlawful for any person to bring in, set up, construct, manage or operate any amusement or entertainment contraption, device or gadget without written authorization from the Director.

#### SECTION Q - ENGINE-POWERED MODELS AND TOYS

It shall be unlawful for any person to fly or use any fuel or electric powered model aircraft, boat, car or rocket, or like-powered toy or model without written authorization from the Director. This section shall not apply to models or toys which are powered by hand-wound springs, rubber, or other elastic materials, or by inertial flywheels.

#### SECTION R – UNLAWFUL OCCUPANCY

It shall be unlawful for any person to enter in any way, any building, installation or area that may be under construction, locked or closed to public use; or to enter, remain in, or be upon any building, installation or area after the posted closing time or before the posted opening time, or contrary to the posted notice in any park.

#### SECTION S – INTERFERENCE WITH EMPLOYEE PERFORMANCE OF DUTY

It shall be unlawful for any person to impersonate any employee or agent of the Department or interfere with, harass or hinder any employee or agent in the discharge of duties.

#### SECTION T – PETS IN PARKS

It shall be unlawful for any person to:

1. Cause or allow any pet to roam or be at large in any park;
2. Permit a pet, except guide animals to assist a blind or impaired person, to enter any beach area, picnic area, nature interpretive area, wildlife refuge, golf course, park building or park shelter;
3. Bring a pet into an authorized area of a park unless caged or on a leash not more than six (6) feet in length, except in a designated pet exercise or training area;
4. Permit a pet to disturb, harass or interfere with any park visitor, park visitor's property or park employee;
5. Tether any animal to a tree, plant, building or park equipment;
6. Have custody or control of any pet in a park without possessing and using an appropriate device for cleaning up pet feces and disposing of the feces in a sanitary manner; or
7. Permit any pet or domestic animal to graze or browse in any park.

#### SECTION U – UTILITIES

It shall be unlawful for any person to locate, construct or erect any sewer, gas pipe, water pipe, hydrant, lamp post, telephone or electric post, conduit, pump, lift station or other utility feature in any park without approval of the Board. Every person, firm or corporation who receives a contract or permit to do work shall, after such work has commenced and until same has been completed, isolate the construction area by security fencing, warning lights and signs, or other appropriate measures that will protect the public from exposure to danger and prevent unnecessary accidents.

#### SECTION V – LOST AND FOUND ARTICLES

Lost or mislaid articles, money or personal property which are found in any park shall be delivered or turned over to the Ramsey County Sheriff's Patrol Station or to the nearest on-duty peace officer. Property will be disposed of in accordance with Minnesota Statutes 345.15.

#### SECTION W – PEACE OFFICERS AND EMPLOYEES

It shall be unlawful for any person to:

1. Willfully resist, refuse or fail to comply with any order, direction or request lawfully given by any peace officer, Department employee or agent acting under the authority of the Board and in accordance with this ordinance; or
2. Interfere with or, in any manner, hinder any Department employee, agent or peace officer during the performance of assigned duties.



#### SECTION X -- POSTED REGULATIONS, DIRECTIONAL SIGNS AND GRAPHICS

It shall be unlawful for any person to disregard or fail to comply with any posted regulations, directional signs and graphics, barriers or other control devices located within any park.

#### SECTION Y -- ENCROACHMENTS

It shall be unlawful for any person to encroach on park property with such items as fences, gardens, other personal property, or to disturb the natural landscape, vegetation or structures on park property or otherwise use park property for private use. All setbacks and other local zoning regulations are in effect and apply against properties adjacent to a County Park as they would against property adjacent to private property.

### CHAPTER IV -- REGULATION OF RECREATION ACTIVITY

#### SECTION A -- PICNICKING

It shall be unlawful for any person to:

1. Assume exclusive use of a reservation picnic site or shelter without a permit;
2. Use a portion of a reservation picnic area or shelter without a permit if the area is reserved by a permitted group;
3. Conduct picnic activity at reservation picnic sites contrary to a permit, or otherwise violate provisions of a permit; or
4. Set up temporary shelters, tarps, canopies and other such devices without a permit.

#### SECTION B -- SWIMMING

It shall be unlawful for any person to:

1. Bathe, wade or swim in any park waters, except in such areas specifically designated for such use;
2. Intentionally expose his or her genitals, pubic area, buttocks or female breasts below the top of the areola with less than a fully opaque covering while wading, swimming or using any beach or other area within a park, if ten (10) years of age or older;
3. Take glass bottles or glass containers of any kind into a designated beach area;
4. Start or maintain a fire or grill in a designated beach area;
5. Scuba dive in a designated swimming area, except by written authorization from the Director; or
6. Bring into or use at any beach any innertube, life raft or other inflatable or buoyant object intended to support a person, except U.S. Coast Guard approved life jackets or vests when properly attached.

#### SECTION C -- FISHING

It shall be unlawful for any person to:

1. Fish in a park in violation of any provisions of Minnesota Statutes;
2. Fish in a prohibited area;
3. Take any fish, frog, turtle or crayfish by spearing, archery, netting, trapping from park waters or from any shoreline, pier or dock under the jurisdiction of the Board;
4. Fish in a reckless or careless manner so as to create a nuisance or to endanger the safety of other park users;
5. Cut a hole in the ice of any park waters, except where ice fishing is permitted and then only when said hole is less than ten (10) inches in diameter.
6. Erect a permanent or portable ice fishing shelter on any park waters without a permit;
7. Move an ice fishing shelter onto or off of the ice from any park, except from access points designated by the Director; or
8. Leave an ice fishing shelter unattended on park land.

#### SECTION D -- BOATING

It shall be unlawful for any person to:

1. Launch or land any watercraft upon any waters within a park, except in designated areas;
2. Leave any watercraft unattended, except in designated areas;
3. Operate any watercraft in a designated swimming area or other prohibited area;
4. Operate any watercraft in park waters in violation of Minnesota Statutes, 86B, "Waters and Watercrafts";
5. Launch, dock or operate any watercraft within 100 feet of any designated swimming area;
6. Tow a person on water-skis, surfboard, kneeboard or innertube in a designated swimming area or enter a designated swimming area on such device;
7. Operate any watercraft in violation of rules and regulations limiting watercraft type, horsepower size, type of motor, direction of travel or speed;
8. Operate any watercraft in such a manner that its wash or wake will endanger, harass or unnecessarily interfere with any person or property; or

9. Launch or remove any watercraft from park waters without inspecting the watercraft and trailer for aquatic vegetation, removing and properly disposing of said vegetation in containers provided.

#### SECTION E -- BICYCLING

It shall be unlawful for any person to:

1. Operate a bicycle, except on paved bike trails and roadways, and except as close to the right hand side of the paved bike trail or roadway as conditions permit;
2. Operate a bicycle on unpaved trails, except at areas and times designated for that purpose;
3. Operate a bicycle in violation of Minnesota Statutes, Chapter 169, "Highway Traffic Violation"; or
4. Ride or operate a bicycle, except in a prudent and careful manner or at a speed faster than is reasonable and safe with regard to the safety of the operator and other persons in the immediate area.

#### SECTION F -- GOLF

It shall be unlawful for any person to:

1. Hold a tournament under the jurisdiction of the Board without having procured a permit;
2. Drive, putt or, in any other manner, play or practice golf, except in areas specifically designated for such use; or
3. Enter or exit any golf course, except through designated access points.

#### SECTION G -- GAMES

It shall be unlawful for any person to engage in any potentially dangerous games involving thrown or propelled objects such as baseballs, horseshoes or similar objects, except in areas specifically designated for such use.

#### SECTION H -- CROSS-COUNTRY SKIING

It shall be unlawful for any person to:

1. Cross-country ski in any park, except on designated trails at designated times when weather conditions permit;
2. Cross-country ski in any park in violation of Minnesota Statutes, Section 85.41 -- Cross-country Ski Passes;
3. Cross-country ski on park trails contrary to rules and regulations established by the Director or in violation of any posted trail sign; or
4. Use cross-country ski trails during the cross-country ski season for any activity other than cross-country skiing.

#### SECTION I -- HORSEBACK RIDING

It shall be unlawful for any person to ride or drive a horse in any park, except in areas specifically designated for such use.

#### SECTION J -- CAMPING

It shall be unlawful for any person to establish or maintain any camp or other temporary lodging or sleeping place in any park, except by written authorization from the Director, and then only in areas specifically designated for such use.

#### SECTION K -- ROLLER-SKATING

It shall be unlawful for any person to:

1. Roller-skate in a park, except on paved bike/hike trails unless posted otherwise;
2. Roller-skate in a park, except in a prudent, careful manner and at a speed that is reasonable and safe with regard to the safety of the operator and other persons in the immediate area;
3. Roller-skate in any park building or shelter, except by written authorization from the Director; or
4. Roller-skate in any parking lot, except incidental travel between a motor vehicle and an authorized use area.

#### SECTION L -- SNOWMOBILING

It shall be unlawful for any person to:

1. Operate a snowmobile in any park or on any public trail or lake surface under the jurisdiction of the Board, except in areas and on trails and lakes specifically designated for such use;
2. Operate a snowmobile in any park or on any public trail or lake surface under the jurisdiction of the Board contrary to, or in violation of, Minnesota Statutes, Section 84.81-84.90, "Snowmobile Laws," and Chapter 5: Natural Resources 51-59, "Snowmobile Rules and Regulations" (all rules and regulations therein pertaining to "public land and water" shall apply on park property and park waters);

3. Operate a snowmobile in excess of speed limits specifically posted for such use or to speed in excess of 15 miles per hour within 100 feet of any person fishing, fish house, pedestrian, skier, skating rink, sliding or other area where such operation would conflict with or endanger another person's property;
4. Operate a snowmobile within 150 feet of any residential shoreline on sanctioned lakes within Ramsey County, except at a speed of 15 miles per hour or less for the purpose of ingress and egress from the lake or for the purpose of parking such vehicles near the shoreline;
5. Operate a snowmobile to tow any person, sled or other conveyance, except for by the use of a rigid tow bar attached to the rear of such snowmobile (disabled snowmobiles shall be exempt); or
6. Operate a snowmobile in violation of any posted sign.

#### SECTION M – OTHER WINTER ACTIVITIES

It shall be unlawful for any person to ice skate, sled, coast, snowshoe or ski in a park, except at designated times and places.

#### CHAPTER V – REGULATION OF MOTORIZED VEHICLES, TRAFFIC AND PARKING

##### SECTION A – MOTORIZED RECREATION VEHICLE

It shall be unlawful for any person to operate a motorized recreation vehicle within a park, except in such areas and times as designated by the Board.

##### SECTION B – VEHICLE OPERATION

It shall be unlawful for any person to:

1. Operate a motor vehicle within a park, except on roadways, parking areas, parkways or other areas designated for such use;
2. Operate a vehicle at a speed in excess of 15 miles per hour or posted speed limits;
3. Operate a vehicle within a park in violation of posted regulations, Minnesota Statutes, Chapter 169, County or Municipal Traffic Code, Orders or Directions of Peace Officers or Department Employees Authorized to Direct Traffic;
4. Drive or operate a vehicle on or along any roads, drives or parking lots which have been restricted, closed or posted with appropriate signs or barricades. The Director shall have the authority to order roads, drives or parking lots within any park closed during the process of construction, reconstruction or repair, or when, in the opinion of the Director, weather conditions render travel unsafe or unduly destructive.
5. Operate a vehicle in a careless or reckless manner;
6. Operate a vehicle which emits excessive or unusual noise, noxious fumes, dense smoke or other pollutants;
7. Fail to yield right of way to pedestrians and other trail users;
8. Wash, grease, change oil, service or repair any vehicle in a park, except disabled vehicles which shall be expeditiously made operational and removed;
9. Drink, consume or possess an open bottle or container of an alcoholic or intoxicating beverage in or on any motor vehicle when such vehicle is in a park; or
10. Cause any taxi, limousine or vehicle for hire to stand in a park for the purpose of soliciting or taking passengers other than those who have requested or were carried to the site by said vehicle, unless licensed by the Board.

##### SECTION C – PARKING VEHICLES

It shall be unlawful for any person to:

1. Park or leave a vehicle standing, except in a designated area and then only in a manner so as not to restrict normal traffic flow;
2. Leave a vehicle standing after posted closing hours, except by written authorization from the Director;
3. Park a vehicle adjacent to any curb painted yellow in any park;
4. Park in a space designated for handicapped parking only, except with handicapped vehicle license or permit;
5. Park or leave a vehicle without a trailer in a parking space designated for vehicles with boat trailers; or
6. Park a vehicle with a boat trailer, except in designated boat trailer parking areas.

Vehicles illegally parked, disabled or abandoned may be towed away and impounded at the owner's expense. Said vehicle may be sold, if unclaimed after 90 days, to pay towing and storage fees.

#### CHAPTER VI – ENFORCEMENT

##### SECTION A – PEACE OFFICERS

1. Peace officers shall, in connection with their duties imposed by law, diligently enforce the provisions of this ordinance and may issue citations, arrest, arrest with warrant and eject from parks, persons acting in violation of the ordinance.

2. Peace officers shall have the authority to seize, confiscate and impound any substance, plant, animal, vehicle or other article which, upon probable cause, are found to be used or possessed in violation of this ordinance.

##### SECTION B – FINES AND PENALTIES

Violations of this Ordinance shall be punished as a misdemeanor.

##### SECTION C – EMPLOYEE PERFORMANCE OF DUTY

Nothing in this ordinance shall prevent employees or agents of the Department from performing their assigned duties.

#### CHAPTER VII – MISCELLANEOUS

##### SECTION A – REPEAL

Existing park ordinance and any rules and regulations in conflict with this ordinance, or any parts thereof, are hereby repealed, except that such ordinances, rules and regulations shall be deemed to be in force for the purpose of protecting any right vested, accrued or arising therefrom.

##### SECTION B – CAPTIONS AND HEADINGS

The captions and headings used herein are for convenience and reference only and do not define or limit the contents of each paragraph.

##### SECTION C – SEPARABILITY

The provisions of this ordinance shall be separable and the invalidity of any section, paragraph, subparagraph, subdivision or other part thereof shall not make void, impair, invalidate or affect the remainder thereof.

#### CHAPTER VIII – EFFECTIVE DATE

Passed and approved this 11<sup>th</sup> day of February, 1992.

Amendment passed and approved this 27<sup>th</sup> day of April, 2007.





# APPENDIX B - RESOLUTIONS

## Resolution

Board of

### *Ramsey County Commissioners*

Presented By: Commissioner McDonough Date: June 25, 2013 No. 2013-177

Attention: Parks and Recreation

Page 1 of 2

=====

WHEREAS, The Ramsey County Parks and Recreation Department has prepared the Rice Creek North Regional Trail Master Plan Amendment to accurately reflect acquisition and development plans for the central portion of the trail corridor that runs from County Road I to County Road H just east of Interstate 35W, as well as incorporate a trail extension to the south that will connect to the Highway 96 Regional Trail; and

WHEREAS, The amendment includes development within the existing corridor as well as on property approved for transfer to Ramsey County as a public benefit conveyance from the former Twin Cities Army Ammunition Plant (TCAAP); and

WHEREAS, The Ramsey County Board of Commissioners, by Resolution 1998-234, approved the original Rice Creek North Regional Trail Master Plan, and by Resolution 2003-070, approved an Amendment to the Rice Creek North Regional Trail Master Plan for the addition of the Wildlife Corridor. The proposed amendment reflects the additions that were approved by the Arden Hills City Council in December of 2009 and the Ramsey County Board of Commissioners in 2010 by Resolution 2010-036; and

WHEREAS, Ramsey County staff prepared design concepts that were presented at a TCAAP Remediation Open House on May 7, 2013 and placed on the Department's website to solicit input from the public; and


WHEREAS, The Master Plan Amendment identifies future capital improvement projects for the regional trail that will enhance visitor services; and

WHEREAS, The expansion of the Rice Creek North Regional Trail will facilitate site improvements to the existing Rice North Creek Regional Trail Corridor and provide a trail extension to the Highway 96 Regional Trail; and

Ramsey County Board of Commissioners

	YEA	NAY	OTHER
Toni Carter	X		
Blake Huffman	X		
Jim McDonough	X		
Mary Jo McGuire	X		
Victoria Reinhardt	X		
Janice Rettman	X		
Rafael Ortega	X		

Rafael Ortega, Chair

By:   
 Bonnie C. Jackelen  
 Chief Clerk – County Board

# Resolution

Board of

## *Ramsey County Commissioners*

Presented By: Commissioner McDonough Date: June 25, 2013 No. 2013-177

Attention: Parks and Recreation

Page 2 of 2

=====


WHEREAS, The Master Plan Amendment has been recommended for approval by the Ramsey County Parks and Recreation Commission and was approved by the Arden Hills City Council on June 24, 2013; Now, Therefore, Be It

RESOLVED, The Ramsey County Board of Commissioners approves the Rice Creek North Regional Trail Master Plan Amendment dated July 2013 for submission to the Metropolitan Council.

Ramsey County Board of Commissioners

	YEA	NAY	OTHER
Toni Carter	X		
Blake Huffman	X		
Jim McDonough	X		
Mary Jo McGuire	X		
Victoria Reinhardt	X		
Janice Rettman	X		
Rafael Ortega	X		

Rafael Ortega, Chair

By:   
Bonnie C. Jackelen  
Chief Clerk – County Board





**CITY OF ARDEN HILLS  
COUNTY OF RAMSEY  
STATE OF MINNESOTA**

**RESOLUTION NO. 2013-028**

**A RESOLUTION SUPPORTING THE AMENDMENT TO THE RICE CREEK  
NORTH REGIONAL TRAIL MASTER PLAN**

**WHEREAS**, the Arden Hills City Council approved the Rice Creek North Regional Trail (RCNRT) Master Plan in 1998 and approved an amendment to the master plan in 2003; and

**WHEREAS**, the Arden Hills City Council unanimously adopted a resolution on December 21, 2009, identifying additional elements to be incorporated into the regional trail system, including the 49-acre Wildlife Corridor, a 30-acre Rice Creek South Regional Trail connection to the Highway 96 Regional Trail, and a 29-acre Trailhead Access to support recreational use of the Arden Hills Army Training Site (AHATS) property for seasonal trails; and

**WHEREAS**, Ramsey County has submitted an amendment, attached as Exhibit A, to update the master plan for the portion of the Rice Creek North Regional Trail Master Plan that traverses the former Twin Cities Army Ammunition Plant Property (TCAAP)

**WHEREAS**, the amendment incorporates additional area for the wildlife/trail corridor and site improvements to the existing Rice Creek North Regional Trail Corridor to include a regional trailhead; access drive and bituminous trail connections from County Rd I; X-C ski and staging area; natural surface grass trails/X-C trails; habitat restoration; improved connections to Rice Creek; improved trail connections; site remediation/clean up; and a trail extension from the existing RCNRT along the east side of the former TCAAP site to connect to the Highway 96 Regional Trail; and

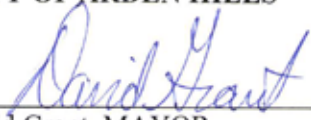
**WHEREAS**, the amendment incorporates a 150 foot corridor along the edge of the Arden Hills Army Training Site (AHATS) site to provide for a trail connection to Highway 96; and

**WHEREAS**, the City of Arden Hills Staff have reviewed the plan and supports the amendment of the Rice Creek North Regional Trail Master Plan Amendment; and

**NOW, THEREFORE, BE IT RESOLVED** by the City Council of the City of Arden Hills, Minnesota, that the City of Arden Hills supports the amendment of the Rice Creek North Regional Trail Master Plan.



ADOPTED BY THE CITY COUNCIL OF THE CITY OF ARDEN HILLS  
THIS 24<sup>TH</sup> DAY OF JUNE, 2013.

  
\_\_\_\_\_  
David Grant, MAYOR

ATTEST:

  
\_\_\_\_\_  
Patrick Klaers, CITY ADMINISTRATOR



**RESOLUTION NO. 13-59**

**EXTRACT OF MINUTES OF MEETING OF THE  
CITY COUNCIL OF SHOREVIEW, MINNESOTA**

**HELD JULY 1, 2013**

\* \* \* \* \*

Pursuant to due call and notice thereof, a meeting of the City Council of the City of Shoreview, Minnesota was duly called and held at the Shoreview City Hall in said City at 7:00 PM.

The following members were present: Martin, Quigley, Wickstrom, Withhart  
And the following members were absent: Johnson

Member Withhart introduced the following Resolution and moved its adoption.

**RESOLUTION NO. 13-59  
APPROVING THE RICE CREEK NORTH REGIONAL TRAIL MASTER PLAN  
AMENDMENT**

**WHEREAS**, Ramsey County established the Rice Creek North Regional Trail Master Plan in 1998 and completed an amendment to the master plan in 2003; and

**WHEREAS**, Ramsey County has submitted an amendment, attached as Exhibit A, to update the master plan for the portion of the Rice Creek North Regional Trail Master Plan that traverses the former Twin Cities Army Ammunition Plant Property (TCAAP)

**WHEREAS**, the amendment incorporates additional area for the wildlife/trail corridor and site improvements to the existing Rice Creek North Regional Trail Corridor to include a regional trailhead; access drive and bituminous trail connections from County Rd I; cross-country ski and staging area; natural surface grass trails/cross-country ski trails; habitat restoration; improved connections to Rice Creek; improved trail connections; site remediation/clean up; and a trail extension from the existing trail south along the east side of the former TCAAP site to connect to the Highway 96 Regional Trail; and

**WHEREAS**, the City of Shoreview Staff have reviewed the plan and supports the amendment of the Rice Creek North Regional Trail Master Plan Amendment; and

**NOW, THEREFORE, BE IT RESOLVED** by the City Council of the City of Shoreview, Minnesota, that the City of Shoreview supports the amendment of the Rice Creek North Trail Master Plan Amendment.

The motion was duly seconded by Council Member Wickstrom and upon a vote being taken thereon, the following voted in favor thereof: Martin, Quigley, Wickstrom, Withhart

And the following voted against the same: None

Adopted this 1st day of July, 2013



Sandra C. Martin, Mayor  
Shoreview City Council

ATTEST:



Terry Schwerm, City Manager



## Community Development Committee

For the Metropolitan Council meeting of August 28, 2013

---

**Subject:** Rice Creek North Regional Trail Master Plan Amendment, Ramsey County

---

### **Proposed Action**

That the Metropolitan Council approve the Rice Creek North Regional Trail Master Plan Amendment.

### **Summary of Committee Discussion/Questions**

The Community Development Committee unanimously recommended approval of the proposed action.

## Metropolitan Parks and Open Space Commission

Meeting date: August 6, 2013

For the Community Development Committee meeting of August 19, 2013

---

**Subject:** Rice Creek North Regional Trail Master Plan Amendment, Ramsey County

**District(s), Member(s):** MPOSC District E, Tony Yarusso

**Policy/Legal Reference:** MN Statute 473.313

**Staff Prepared/Presented:** Jan Youngquist, AICP, Planning Analyst (651-602-1029)

**Division/Department:** Community Development, Regional Parks and Natural Resources

---

### Proposed Action

That the Metropolitan Council approve the Rice Creek North Regional Trail Master Plan Amendment.

### Background

Ramsey County has submitted an amendment to the master plan for the Rice Creek North Regional Trail to expand the trail corridor. The expansion area is located within the former Twin Cities Army Ammunition Plant (TCAAP) site in Arden Hills. The amendment adds an additional 60 acres to the wildlife corridor and will facilitate the construction of a trailhead entry driveway from County Road I. A 150 foot wide corridor will also be added that will create a trail connection from the existing trail through the TCAAP site to the Highway 96 Regional Trail. The property will be transferred at no cost from the US Army to Ramsey County through the National Park Service, with the stipulation that Ramsey County complete soil remediation to make the site suitable for recreational development.

### Rationale

The Rice Creek North Regional Trail Master Plan Amendment is consistent with the requirements of the *2030 Regional Parks Policy Plan* and other Council policies.

### Funding

The estimated cost to implement the master plan amendment is \$3,155,479, which includes \$615,000 in eligible acquisition costs (site demolition and soil remediation) and \$2,540,479 for development.

Approval of this master plan makes the acquisition and development costs eligible for regional parks funding, but does not commit the Council to any funding. Future funding based on this master plan may be awarded through the Regional Parks Capital Improvement Program (CIP) and the Acquisition Opportunity Fund. Council action is required to approve the CIP and to approve specific grants to Ramsey County.

### Known Support / Opposition

The Ramsey County Board passed a resolution approving the Rice Creek North Regional Trail Master Plan Amendment. The master plan amendment also includes resolutions of support from the Cities of Arden Hills and Shoreview. There is no known opposition to the master plan amendment.



## Analysis

The 2030 Regional Parks Policy Plan requires that destination regional trail master plans address the eleven items listed below.

**1. Boundaries and Acquisition** The Rice Creek North Regional Trail extends 14 miles from the Rice Creek West Regional Trail at Long Lake Regional Park to the Rice Creek Chain of Lake Park Reserve in Anoka County. This master plan amendment proposes to expand the regional trail in the central portion of the trail corridor within Arden Hills, as shown in **Figure 1**.

**Figure 1: Location of the Rice Creek North Regional Trail**





The 1998 Rice Creek North Regional Trail Master Plan identified 113 acres of the former Twin Cities Army Ammunition Plant (TCAAP) site to be acquired for the regional trail corridor. The development and operation of the TCAAP site as a federal small arms ammunition plant began in 1941 and lasted until 1976. Between 1974 and 1985, the federal government started decommissioning the property. Production of special munitions continued on a limited basis until 2005. The 113 acres was transferred to Ramsey County through the National Park Service as part of the Federal Lands to Park Program. A trail has been constructed on this property.

An amendment to the Rice Creek North Regional Trail was developed in 2003, which identified an additional 49 acres of the TCAAP property to be acquired as a wildlife corridor. This corridor is a critical link to the 1,500 acre Arden Hills Army Training Site (AHATS) that is east of the TCAAP property.

The current master plan amendment includes the addition of 60 acres of the TCAAP site that will facilitate the construction of a trailhead entry driveway and additional trails near County Road I. Also being added is a 150 foot wide corridor that will provide a trail connection to the Highway 96 Regional Trail. The property will be transferred at no cost from the US Army to Ramsey County through the National Park Service, with the stipulation that Ramsey County complete soil remediation to make the site suitable for recreational development. The estimated cost for site demolition and soil remediation is \$615,000, which is an eligible acquisition cost based on the Park Acquisition Opportunity Fund Grant Rules that were adopted by the Metropolitan Council in January 2013 as part of an amendment to the *2030 Regional Parks Policy Plan*.

**2. Demand Forecast** Ramsey County’s portion of the Rice Creek North Regional Trail had 207,900 visits in 2011 and 216,000 visits in 2012. Surveys conducted by the Metropolitan Council show that the most popular activities in the regional parks system include walking and biking. The use of the Rice Creek North Regional Trail is anticipated to continue to rise due to these urban recreation trends and the projected population growth of communities in the trail service area, as shown in Figure 2.

**Figure 2: Projected Population of Communities in the Regional Trail Service Area**

<b>Year</b>	<b>Arden Hills</b>	<b>Mounds View</b>	<b>New Brighton</b>	<b>Shoreview</b>
2010	9,552	12,155	21,456	25,043
2030	12,900	13,400	22,800	29,000
<i>Projected Increase 2010-2030</i>	26%	9%	6%	14%

The most significant population growth is projected to occur in the area immediately adjacent to the regional trail amendment area through redevelopment of the TCAAP site. It is anticipated that the site will include a mixture of commercial and residential uses.



**3. Development** Recreational development in the 60 acre trail corridor expansion area will include:

- Bituminous trail
- Natural surface trail for hiking
- Trailhead building with restrooms
- Parking (100 stalls)
- Site amenities
- Entry drive from County Road I
- Improved trail connections to Rice Creek
- Habitat restoration
- Wayfinding signage
- Potential cross-country ski trails in conjunction with the development of ski trails on the AHATS property
- Canoe/kayak access to Rice Creek

A new bituminous trail will link the proposed trailhead and parking area to County Road I. An at-grade crossing will be needed at County Road I for pedestrian and bicyclist safety.

Approximately 9,000 linear feet of natural surface trail is proposed to create a walking/cross-country skiing loop that will connect into a future cross-country trail system within the AHATS property. This will be accomplished through working with AHATS and supported by the Minnesota Amateur Sports Commission. The natural surface trail will allow users to walk and ski through restored prairie and Rice Creek wetlands.

The master plan amendment also includes the Rice Creek North Regional Trail Connection, which will extend 1.5 miles from the existing wildlife area to Highway 96. This trail will cross a proposed service road to access a future electrical substation. This will be an at-grade crossing. Signage along the trail and the road will notify drivers and trail users to use caution at the intersection. In order to connect this trail to the Highway 96 Regional Trail, which is located on the south side of Highway 96, a future signalized intersection will be coordinated with TCAAP development planning.

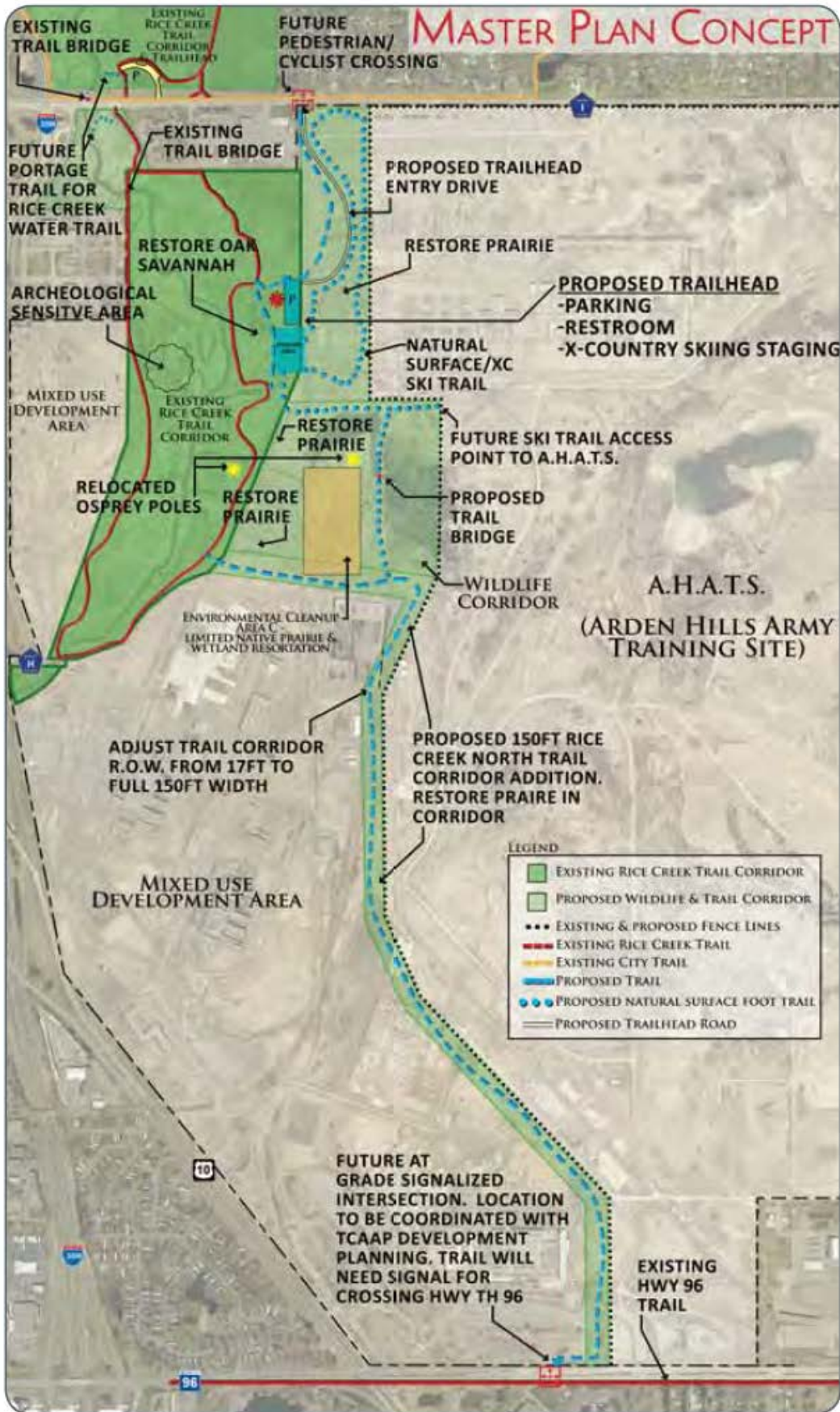
The estimated development costs for the regional trail amendment area are approximately \$2,540,479, as shown in **Figure 3**.

**Figure 3: Estimated Development Costs of the Rice Creek North Regional Trail Amendment**

Description	Estimated Cost
Parking lot reconstruction (100 cars)	\$151,732
Entrance Road	\$256,342
Trail connections (12,700 linear feet)	\$362,010
Landscape restoration	\$276,100
Site amenities (benches, trash receptacles, bike racks, signage)	\$27,940
Trailhead building	\$275,000
Utility extension	\$572,000
Other site improvements (remove existing bituminous, fencing)	\$619,355
<b>TOTAL</b>	<b>\$2,540,479</b>

The master concept plan is shown in **Figure 4**.

Figure 4: Master Concept Plan





**4. Conflicts** There are no major conflicts that will affect development of regional trail. Adjacent land uses include the future mixed-use development area of the TCAAP property to the west and south and the Arden Hills Army Training Site (AHATS) to the east. A fence will separate the regional trail corridor from the AHATS property. Power lines will be collocated along a portion of the trail corridor. An access road to a substation will be necessary, which will be managed to have a minimal impact on trail use.

**5. Public Services** No significant new public services are needed for the development concept that is outlined in the master plan. Once the trail corridor is established and visitor use increases, there may be a need for intersection improvements at the access to County Road I. Water and sanitary sewer services are planned to serve the restrooms at the trailhead area. All existing sewer and water mains to the existing buildings on the site are planned to be abandoned. It is anticipated that sewer and water lines will be extended from existing mains on County Road I.

**6. Operations** The use of Ramsey County's parks and trails is controlled by "An Ordinance for the Control and Management of Park, Recreation and Open Space Areas and Facilities under the Jurisdiction of the Ramsey County Board of Commissioners." The ordinance was adopted in 1992 and amended in 2007. Enforcement, first aid and security along the trail will be provided by the Ramsey County Parks in conjunction with the County Sheriff's Department. Fire services will be provided by the Lake Johanna Fire Department.

The existing annual operations and maintenance costs for the Rice Creek North Regional Trail are \$30,000. Once fully developed, the annual operations and maintenance costs are estimated to be \$58,000. The master plan amendment states that operation and maintenance services will be provided at a level that is appropriate for the designated use and consistent with the current phase of development. Annual operating costs are funded through County tax revenue and supplemented by a State appropriation that is administered by the Metropolitan Council.

**7. Citizen Participation** Ramsey County presented the master plan concept in conjunction with the City of Arden Hills as part of an informational meeting that also included discussion on the demolition and remediation of the TCAAP site. Approximately 200 people attended the meeting held on May 7, 2013. The master plan concept was posted on Ramsey County's website from May 13 to July 8, with the opportunity for public comment. The plan was also distributed to the Cities of Arden Hills and Shoreview for review and comment. The plan was presented to the Arden Hills City Council on June 24, to the Shoreview Parks and Recreation Commission on June 27, and to the Shoreview City Council on July 1.

The Cities of Arden Hills and Shoreview passed resolutions of support for the master plan amendment. Additionally, the Ramsey County Board of Commissioners unanimously approved the Rice Creek North Regional Trail Master Plan Amendment on June 25, 2013.

**8. Public Awareness** Ramsey County Parks and Recreation promotes public awareness of its regional parks and trails through maps, websites, social media, email notification, brochures and press releases. Information about the Rice Creek North Regional Trail will also be listed on Go Ramsey Communities, a web-based mapping application that allows users to locate opportunities to be active.

**9. Accessibility** The facilities will meet the requirements of the American with Disabilities Act and principles for universal accessibility. Ramsey County is a part of the Ramsey County Active Living Communities partnership, which works to support making physical activity safer and easier. There will not be a fee for use of the regional trail, which eliminates economic barriers for trail users.

**10. Natural Resources** Existing land cover includes a mix of floodplain, grasslands with patches of deciduous forest, and woodlands. Much of the natural vegetation has been highly degraded by past use of the site as an army munitions plant and the channelization of Rice Creek. Invasive species have become widespread. Some portions of the expansion area include restored prairies.

Rice Creek is the predominant natural feature of the regional trail corridor. The creek originates in Clear Lake, which is south of the City of Forest Lake and flows 28 miles southwest to the Mississippi River in Fridley. During times of high water flow, the creek provides an excellent watercourse for canoeing. Sections of the creek in the amendment area have been straightened. Further upstream in Shoreview, the creek has been re-meandered.

The Rice Creek North Regional Trail corridor includes a 49-acre wildlife corridor, which provides an important wildlife connection between the AHATS property and Rice Creek. This area also provides important habitat for birds, small animals, and invertebrates; it also includes several osprey nesting sites.

**11. Stewardship Plan** The Rice Creek North Regional Trail corridor has been identified as a priority area to restore a combination of wetland, prairie and savannah habitats. Prairies will be maintained with prescribed fire and invasive species will be controlled with herbicides and bio-control. Bio-control is done in partnership with the Minnesota Department of Agriculture and Department of Natural Resources.

The deer population is surveyed annually. If needed, the deer herd will be managed with special hunts based on the Ramsey County Cooperative Deer Management Plan in cooperation with local communities.

The Rice Creek Watershed District identifies restoration of Middle Rice Creek as a capital improvement project. The project would include re-meandering of the creek to increase recreational use as a water trail and to reverse the effects of past channelization. Implementation of the project would be a joint effort between the Rice Creek Watershed District, Anoka County, Ramsey County, the National Park Service and the Friends of the Mississippi River.

## **Review by Other Council Divisions**

**Environmental Services – Sewers** (Roger Janzig 651-602-1119) – No comments.

**Community Development – Environment and Surface Water Management** (Jim Larsen 651-602-1159) – No comments.

**Transportation Planning** (Ann Braden 651-602-1705) – No comments.



## **Conclusions**

1. The Rice Creek North Regional Trail Master Plan Amendment is consistent with the requirements of the *2030 Regional Parks Policy Plan* and other Council policies.
2. The estimated cost to implement the master plan amendment is \$3,155,479, which includes \$615,000 in eligible acquisition costs (site demolition and soil remediation) and \$2,540,479 for development.
3. Approval of this master plan does not commit the Council to any funding at this time. Future development funding based on this master plan would be done through the Regional Parks Capital Improvement Program (CIP) and Land Acquisition Opportunity Fund. Council action is required to approve the CIP and to approve specific grants to Ramsey County.



