

Dhismaha Bullaacadda Battle Creek

Adeegyada Deegaanka ee Golaha Metropolitan waxay ka wadaan mashruuc dhaqan celin ah nidaamka bulaacada gobolka Battle Creek (interceptor) ee ku taal Saint Paul.

Baahida loo qabo shaqadan:

Shaqaalaha MCES waxay aqoonsadeen arrimo badan oo nidaam ah oo u baahan fiicil sixitaan ah, oo ay ku jiraan daxalka daran iyo faaruqinta ama jabinta dhuumaha

Faa'iidooyinka mashruuca:

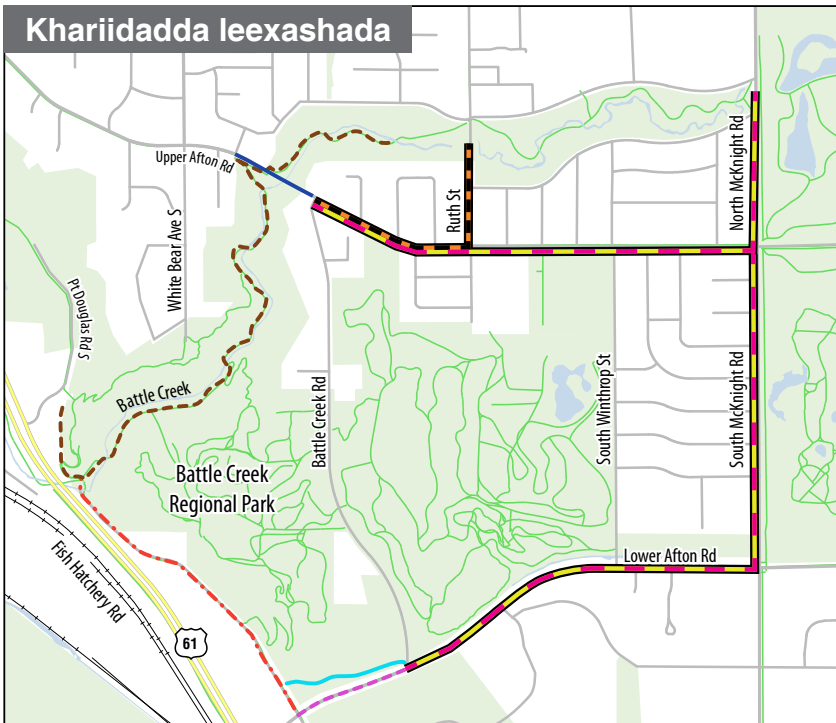
- Yaree soo dhexgalida iyo soo galida (biyaha dhulka hoostiisa ka soo gala ee buux dhaafiya nidaamka biyaha wasakhda ah, taas oo keenaysa keydad wabiyada, harooyinka, iyo dhismayaasha)
- Dib-u-habeyn lagu sameeyo meelaha xumaaday si looga hortago arrimaha dhismaha iyo gudbinta









Shaqada waxaa ka mid ah:

- Dahaarka bullaacadda: tuubada meesha lagu daaweeyay waxay ku lug leedahay sameynta tuubo cusub gudaha tuubbada jirta
- Bedelka godka
- Hawlaha iyo hagaajinta amniga

Dhismaha

- Deyrta 2020 - Deyrta 2021
- Dhismaha waxaa ku jiri doona xiritaanka raadadka iyo hareeraha, iyo xaddidaadaha ku-meel-gaarka ah ee isticmaalka baarkinka
- Saameynta waxaa ka mid noqon kara boodh, buuq, ur, gariirka, carqaladeynta taraafikada, qalabaynta iyo saamaynta muuqaalka



		
Local Detour	Closed to vehicles: Fall 2020 - Fall 2021	Trail closed: Fall 2020 - Fall 2021
		
Regional Detour	Bike access to Highway 61 underpass remains open	Trail closed: Spring 2021 - Fall 2021
		
Full access throughout project (lane narrowing)	Full access throughout project Trail traffic on roadway shoulder: Spring 2021 - Fall 2021	

For more information:
Para más información:
Xav paub ntau tshaj no:
Xog dheeraad ah:



info@battlecreekproject.com



651-286-8470



battlecreekproject.com