



West Side Recreation Options

Round 1 Engagement Results Analysis

May 29, 2022

Table of Contents

1	Introduction	3
1.1	Background	3
1.2	Navigation	3
1.3	Process and Engagement Overview	3
1.3.1	Options	4
1.3.2	Engagement Questions	5
1.3.3	Participation Summary	6
2	Participant Demographics	7
2.1	Home ZIP code	7
2.2	Race, ethnicity	8
2.3	Ethnicity	8
2.4	Age	9
2.5	Home Language	9
3	Analysis	10
3.1	Broad Community Benefits	10
3.1.1	Community Benefits: Analysis	10
3.2	Option 1: Current facility upgraded for several year-round recreational uses and events	11
3.2.1	Option 1: Description	11
3.2.2	Option 1 Analysis: Recreational activities, exciting or appealing, and community benefits	12
3.2.3	Option 1 Analysis: Questions or concerns	13
3.3	Option 2: Current facility with ice rink removed, upgraded for multiple year-round recreational uses and events)	14
3.3.1	Option 2: Description	14
3.3.2	Option 2 Analysis: Recreational activities, exciting or appealing, and community benefits	15
3.3.3	Option 2 Analysis: Questions or concerns	16
3.4	Option 3: New building designed for multiple year-round recreational uses and events	17
3.4.1	Option 3: Description	17
3.4.2	Option 3 Analysis: Recreational activities, exciting or appealing, and community benefits	18
3.4.3	Option 3 Analysis: Questions and concerns	19

3.5 Option 4: No building; park-like space designed for several year-round recreational uses and events.....20

3.5.1 Option 4: Description 20

3.5.2 Option 4 Analysis: Recreational activities, exciting or appealing, and community benefits 21

3.5.3 Option 4 Analysis: Questions and concerns 22

3.6 Analysis: New ideas for this facility/site to support year-round recreation and benefit your community?23

1 Introduction

1.1 Background

- [Jump to next section](#)
- [Return to Table of Contents](#)

As Ramsey County's population increases and becomes more racially, ethnically, and linguistically diverse, gaps are increasing between users and the recreational facilities and services that Parks & Recreation offers. To meet changing community needs and interests, Parks & Recreation developed a new vision for its parks and recreation system: A dynamic, community-centered system that provides opportunities for our ever-changing community to engage with inclusive and welcoming parks and recreation sites and programming.

Ramsey County built the Ken Yackel-West Side Arena in 1973 to serve the growing hockey population at the time. Currently, the arena is heavily used from November through February by youth hockey groups and an in-line skating group in October and March; it is closed from April through September. The use of the facility is predominately by groups outside of the immediate neighborhood; it is currently underutilized by the surrounding community.

This West Side recreation project aims to:

- Provide year-round options for recreational opportunities that are inclusive of racially and ethnically diverse West Side community members' needs, meet current accessibility standards, and are financially and environmentally sustainable.
- Build mutually beneficial relationships and partnerships between the county and West Side communities to support authentic and meaningful engagement, work toward community consensus for the future of this space, and help ensure the county is contributing positively to the West Side neighborhood's future.

The project timeline is shown below.

- **Round 1 engagement, November 2021-April 2022:** Gather input on various options for year-round recreational uses through an online survey and community conversations.
- **Analysis, Spring 2022:** Based on Round 1 input, develop refined options.
- **Round 2 engagement, summer 2022:** Gather feedback on the refined options. Round 2 feedback will help shape decisions on the future of this site, with timing dependent upon the nature of the decision.

1.2 Navigation

- The table of contents entries are hyperlinks; click on any of them to jump directly to a specific section
- At the top of each Results section is a green navigation box with hyperlinks, as shown in the sample at right; click on your choice to jump ahead, back, or return to the Table of Contents
- The section name (question text) is included in the footer on each page to help readers know where they are in the document

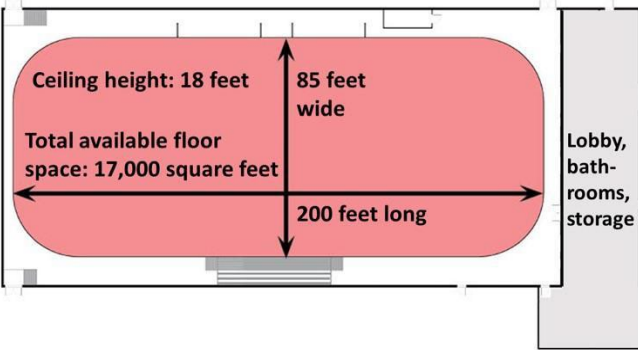
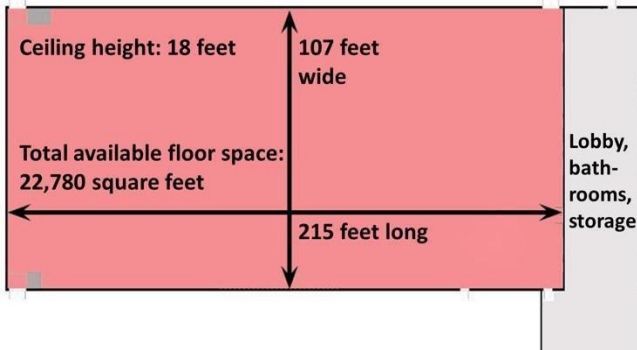
- [Jump to next section](#)
- [Return to previous section](#)
- [Return to Table of Contents](#)



1.3 Process and Engagement Overview

To ensure that participants had correct and current information, Parks & Recreation developed four options and provided graphic and written information about the facility, activities, and uses for each. Questions were both general and option-specific, along with demographics. The options are shown below, followed by the engagement questions, engagement formats, and participation information.

1.3.1 Options

All participants were provided with written and graphic information about the options shown below.

Option 1: Current facility upgraded for several recreational uses and events	Option 2: Current facility with ice rink removed, upgraded for multiple year-round recreational uses, events
Reasonable timeframe: 1-2 years	Reasonable timeframe: 2-3 years
Facility	
	
Existing building upgraded with heating and cooling	Existing building upgraded with heating and cooling
October-March <ul style="list-style-type: none"> • Ice rink with permanent boards • Dry floor cover over rink for occasional special events April-September <ul style="list-style-type: none"> • Ice removed, boards remain • Some recreational uses inside rink area (concrete floor) 	Year-round , multipurpose facility that supports multiple recreational uses
Special events: Year-round as appropriate for facility and site	Special events: Same as Option 1
Activities, Uses	
<u>Examples</u> <ul style="list-style-type: none"> • Oct-Mar: Hockey, figure skating, open skate • Apr-Sept: Youth soccer, climbing wall, walking, dance, fitness/workout equipment, pickleball, sports training/practice sessions, etc. • Activity limitations: Activities not possible due to building height or size issues include adult soccer, softball, baseball, American football, volleyball, badminton, takraw 	<u>Examples</u> <ul style="list-style-type: none"> • Year-round: Youth soccer, climbing wall, walking, fitness/workout equipment, dance, pickleball, sports training or practice sessions, etc. • Activity limitations: Same as Option 1

Option 3: New building designed for multiple year-round uses and events	Option 4: No building; park-like space designed for several year-round recreational uses and events
Reasonable timeframe: 5-10 years	Reasonable timeframe: 1-3 years
Facility	
 <p>Site size: 1.48 acres</p>	 <p>Site size: 1.48 acres</p>
New building	None. Site becomes a new park-like space
Year-round , multipurpose facility designed to support multiple recreational uses	Year-round , multipurpose site that could be designed to support multiple recreational uses
Activities, Events	
Special events: Same as Option 1	Special events: Year-round as appropriate for site
Determined in consultation with the community	Determined in consultation with the community

1.3.2 Engagement Questions

A little about you: Online survey participants were asked to respond to the following questions. Virtual participants were asked to enter their ZIP code in the chat.

- Please enter your home ZIP code (required)
- What year were you born?
- How do you describe your race? American Indian or Alaska Native, Asian or Asian American, Black or African American, Native Hawaiian or other Pacific Islander, White or Caucasian, Other (please specify)
- Are you Hispanic/Latino/Latinx?
- What is your home language?

Options for feedback: As shown on the following pages, all engagements presented the same information about four options for how the current facility or site could be reimaged to meet the recreational needs of the community.

Questions about the options for community participants:

- Community members who responded to the online survey received the following warm-up question: Thinking about future recreational opportunities for this building/site, what are some broad community benefits or priorities that should be considered?

- Community participants were asked the following for each of the four options:
 - What recreational activities could you imagine yourself or your family doing in this facility?
 - What excites or appeals to you about this option?
 - What are your questions or concerns about this option?
- At the end, community participants were asked: What new or additional ideas do you have for this facility or site to support year-round recreation and benefit your community?

Questions about the options for organizations and businesses:

- What broad community benefits or opportunities does this offer?
- What are your questions or concerns?

1.3.3 Participation Summary

This compilation includes 4,873 responses from approximately 469 participants who contributed via one or more of the formats and sessions described below.

In-person sessions: In October 2021, four long-time community leaders contributed their ideas and offered guidance on the process. This compilation includes their responses.

Virtual sessions: This compilation includes responses from the virtual sessions below.

- February 24, 2022: Local organizations and businesses. Co-hosted with the West Side Community Organization; 13 participants.
- March 8, 2022: West Side Voices hosted by the West Side Community Organization; this included both English- and Spanish-language sessions, with identical content; 25 participants.

Online surveys: This compilation includes responses from 427 participants in the English-only online survey. There were no responses to the Spanish-only online survey.

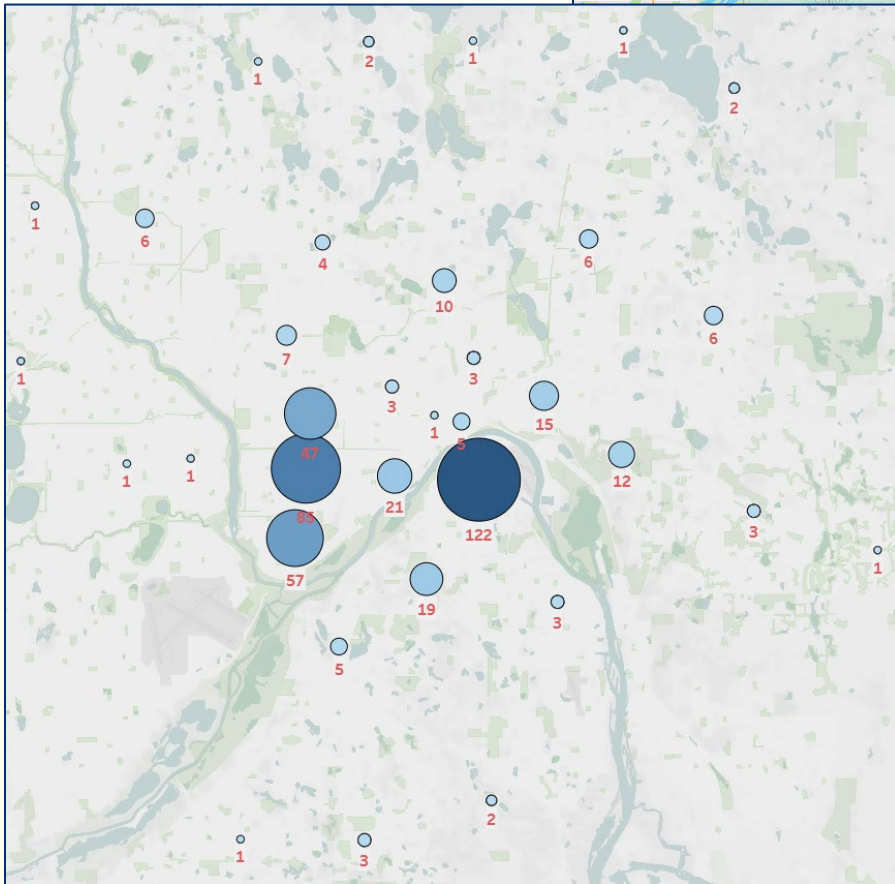
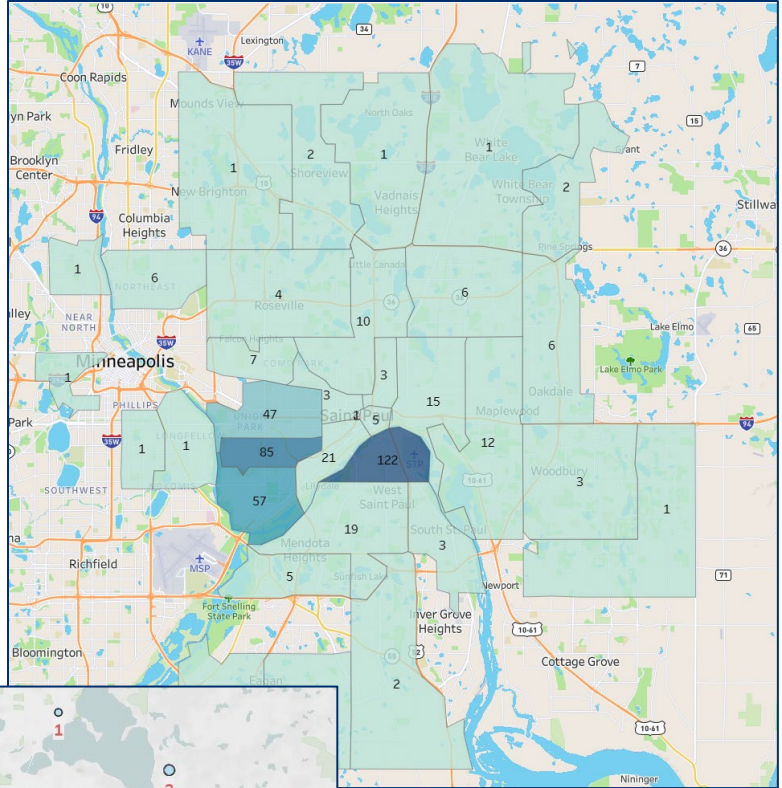
2 Participant Demographics

2.1 Home ZIP code

This question was required for online survey respondents and requested for other participants. The maps below show 463 valid responses, excluding one location in the Minnetonka area and one the Hudson, WI area.

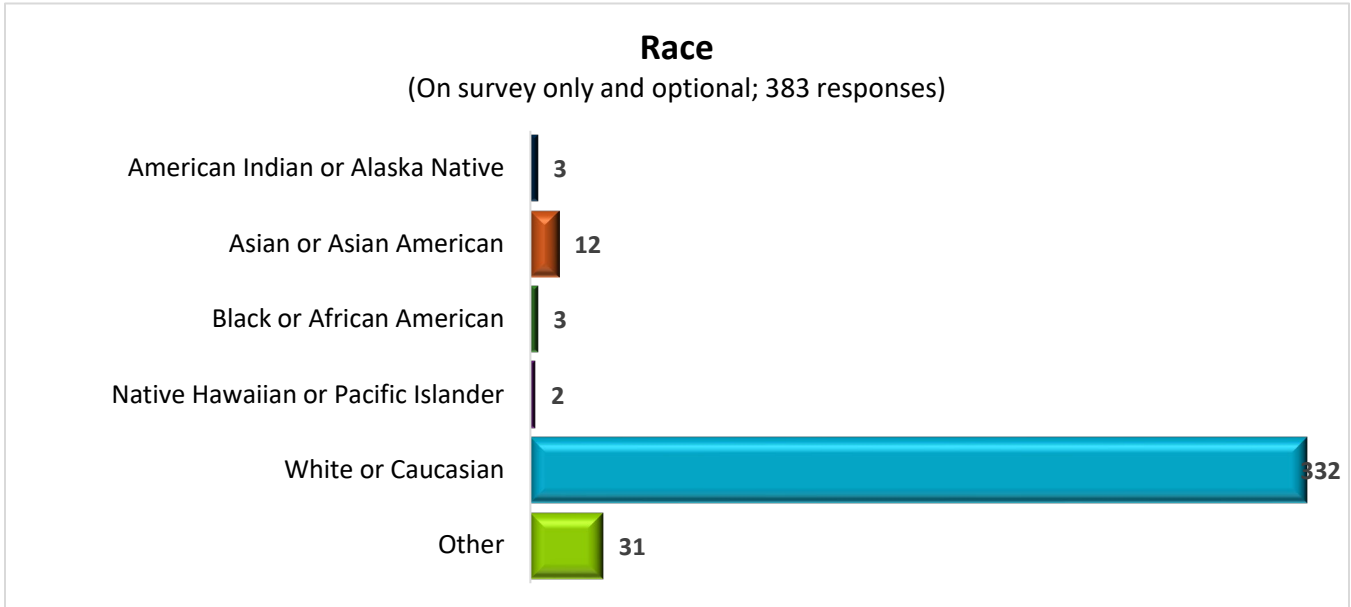
See complete results on the interactive maps online ([zones](#), [bubbles](#)).

- [Jump to next section](#)
- [Return to previous section](#)
- [Return to Table of Contents](#)



2.2 Race, ethnicity

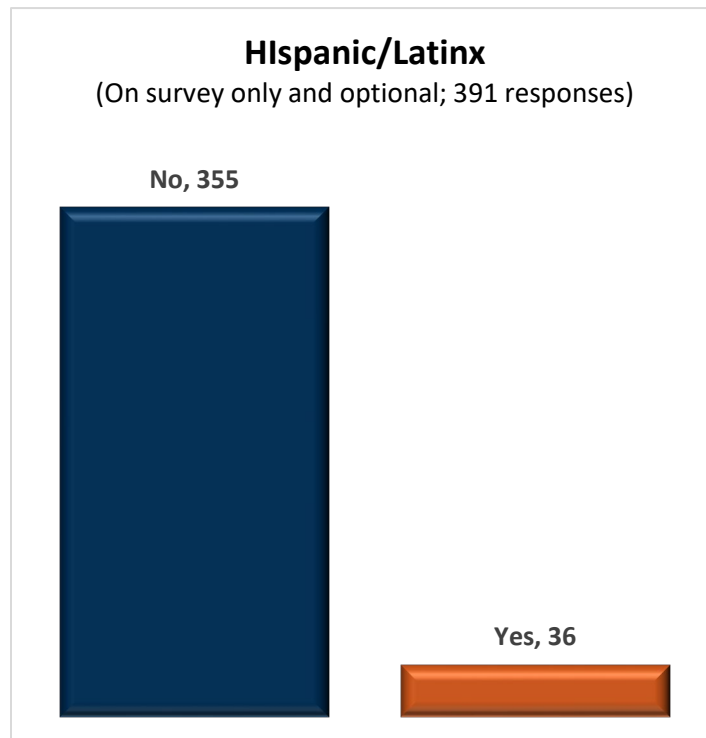
This question was asked only in the online survey and responses were optional. There were 383 responses.



Race responses for “Other” related to the question included multiracial, Lebanese American, Dominican, Cuban, Italian, Middle East, Mexican, and mix.

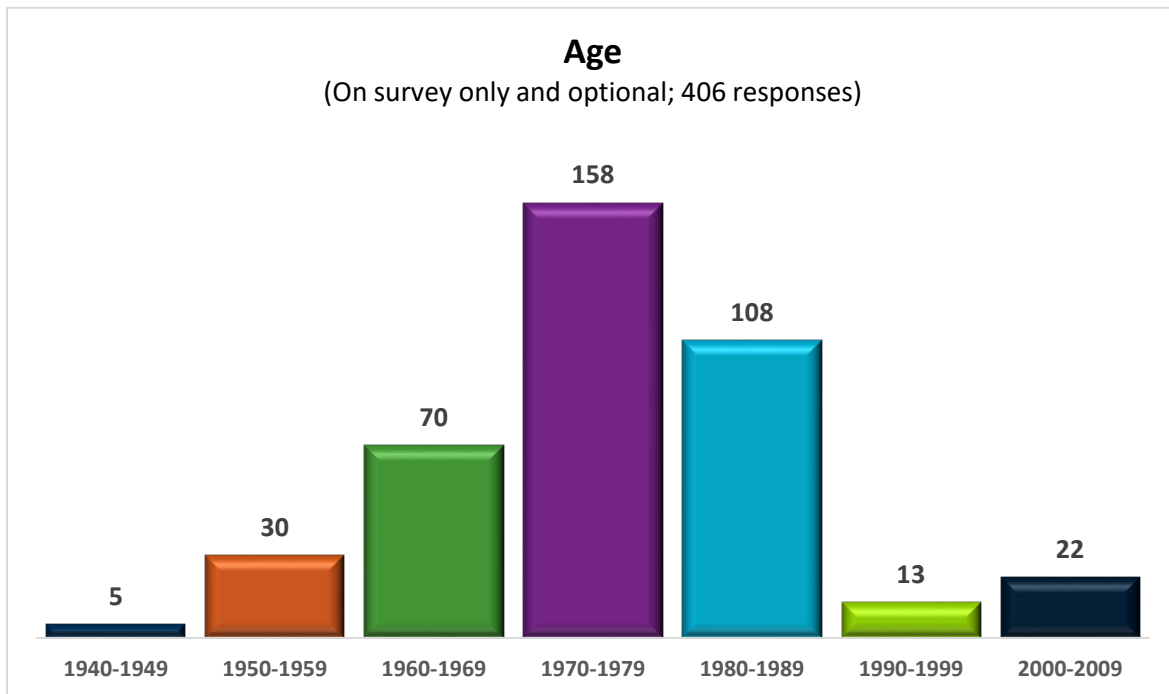
2.3 Ethnicity

This question was asked only in the online survey and responses were optional. There were 391 responses.



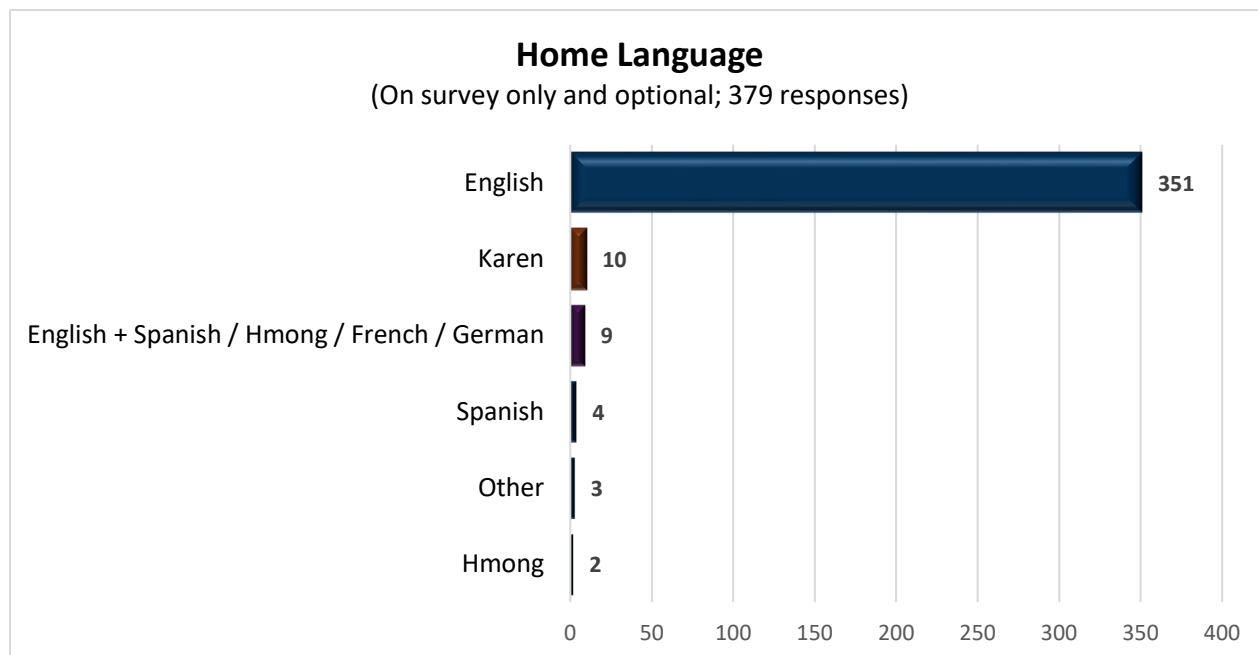
2.4 Age

This question was asked only in the online survey and responses were optional. There are 406 responses.



2.5 Home Language

This question was asked only in the online survey and responses were optional. There are 379 responses.



3 Analysis

This section begins with an analysis of broad community benefits, moves through the four options, and finishes with new or additional ideas for the facility or site. For context, each section includes the content provided to participants. The narrative analysis is based on a review of all participant contributions and includes quotes that reflect various perspectives.

3.1 Broad Community Benefits

As a warm-up question in the online survey, participants were asked: Thinking about future recreational opportunities for this building/site, what are some broad community benefits or priorities that should be considered?

3.1.1 Community Benefits: Analysis

Most responses to this question chose to advocate for one or more specific recreational activities, rather than offering broad community benefits or priorities. A number noted their preference for a specific option, and a few suggested the site might be better repurposed for a non-recreational use. Some noted the importance of a quality facility that is marketed well, safe, attractive, and sustainable.

Of the responses that addressed this question, most supported an inclusive approach that prioritized local and community-centered interests and preferences, such as the following:

- A wide variety of recreational uses, options, and opportunities
- Access and accessibility: year-round, affordable, and including community access for special events
- Appealing to many different types of users
- Meeting community needs and priorities

A balance of serving existing user needs with what those living/working in the direct area can benefit from, contribute to, be safe, and have investment in and input toward solution.



We come here regularly for ice times. I can't imagine NOT having this indoor sheet of ice and would wonder where teams would make up that ice time. On the other hand, I'd prioritize the surrounding neighbors and their needs. A community space should serve the immediate community in which it resides.



The demographics of those in the neighborhood should take precedence when making this decision...If there's enough demand for a different indoor use, whether it's soccer or something else, the needs of local residents should take priority...

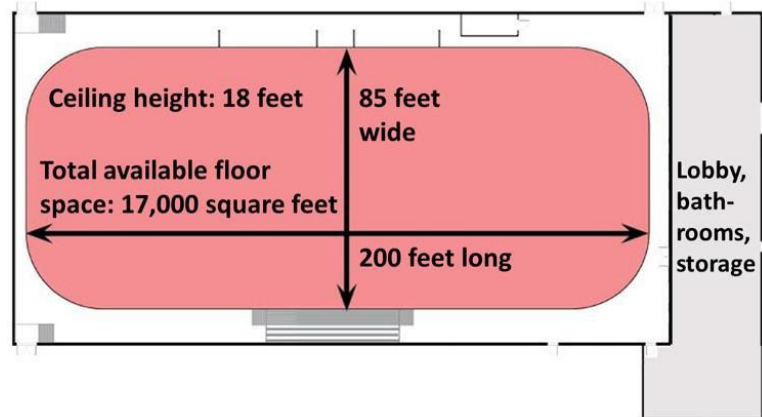
3.2 Option 1: Current facility upgraded for several year-round recreational uses and events

3.2.1 Option 1: Description

Reasonable timeframe to complete: 1–2 years

Facility

- Existing building upgraded with heating and cooling.
- October–March: Ice rink with permanent boards; dry floor cover over rink for occasional special events.
- April–September: Ice removed; some recreational uses inside rink area (concrete floor).
- Special events: Year-round, as appropriate for the facility.



Activities, uses: Examples

- October–March: Hockey, figure skating, open skate.
- April–September: Youth soccer, climbing wall, walking, dance, fitness equipment, pickleball, practice sessions.
- Note: Activities not possible due to building height or size include adult soccer, softball, baseball, American football, volleyball, badminton, takraw.



3.2.2 Option 1 Analysis: Recreational activities, exciting or appealing, and community benefits

The analysis below combines responses to the following three questions because they were very similar.

- Questions for **community members** in the general online survey and in virtual and in-person sessions:
 - What recreational activities could you imagine yourself or your family doing in this facility?
 - What excites or appeals to you about this option?
- Question for **local organizations and businesses** in a specialized online survey and in virtual sessions: What broad community benefits or opportunities does this option offer?

Nearly all responses advocated for the primary current use of hockey and ice skating and/or one or more of the examples provided in the description above the question: youth soccer, climbing wall, walking, dance, fitness equipment, pickleball, practice sessions. For example, “All the activities above. What a GREAT use of this facility for families.” A few responses preferred to limit future use exclusively to hockey and other ice-related activities.

Whether or not the responses included specific examples, large numbers urged opening the facility to a much wider range of uses, users, and seasons, and making it more accessible in all ways:

- Opportunities for all ages, families and singles, people with disabilities; people who live in the community and neighborhood; people of all racial and ethnic backgrounds
- Year-round use
- Affordable access to sports and other recreational activities, especially for youth, families, and elders; a few suggested providing low-cost rental equipment so youth and adults could try new recreation activities, especially ice skating and hockey
- Expanded, available, and affordable space to rent for events and activities such as concerts, markets, dances, practice sessions, community fundraisers, or school-hosted activities that couldn’t be otherwise accommodated; a few noted additional benefits to surrounding businesses from increased facility use
- While a few of the responses advocating for hockey suggested ways to actively support West Side youth to play hockey, most appeared to support Option 1 as a way for current hockey users to maintain access to this affordable, nearby ice rink from October through March, *and* add opportunities for West Siders to use the facility from April through September

During the summer, we could play soccer here, have community events during weekdays and on weekends could open up the rink for various open gym activities.

✠

Nailed it. Youth soccer, the climbing wall, ice skating, and dance I know my girls would love. Fitness equipment for everyone. Even pickleball and walking for our parents. I think this is a very inclusive multi-generational idea.

✠

Better year-round use of space. More events bringing folks to the immediate area = more visitors to local businesses (esp. food & beverage).

3.2.3 Option 1 Analysis: Questions or concerns

This question was asked for community members and local organizations and businesses via general and specialized online surveys and in virtual and in-person sessions.

Questions posed by participants were framed primarily as hopeful ideas and opportunities. These included:

- Be more welcoming and better serve the diverse West Side community
- Offer a wider variety of year-round recreational opportunities for all
- Better promote recreational and event rental opportunities
- Ensure better access and affordability especially for West Siders, such as equipment rentals and lessons, reduced rates or priority access for locals, and earlier scheduling for activities with young children

I've lived here for thirty years, raised five kids, plus grandkids live on West Side, and never knew what the heck this place was. Didn't know it was open to the community.



What would the cost be to upgrade the facility, who will maintain the facility, will it be accessible to all, will sports equipment be available to borrow or rent.

Concerns were centered on the following issues:

- Cost-benefit of expensive upgrades and remodeling this older building for year-round use
- Covering additional costs of year-round staffing and upkeep; passing on higher costs to users (affordability)
- Value of making this a year-round, multi-use facility given nearby facilities and outdoor spaces that already meet those recreation needs
- Anticipated low use during the summer when people more often participate in outdoor recreation activities
- The impact of construction down-time on ice users
- Limiting use to only ice-related activities for so many months each year
- Constraints of the existing facility that limit uses/users in the spring-summer-fall
- Importance of facility upgrades to accommodate new year-round uses and recreational opportunities, improve health and safety, and manage parking and traffic

3.3 Option 2: Current facility with ice rink removed, upgraded for multiple year-round recreational uses and events

3.3.1 Option 2: Description

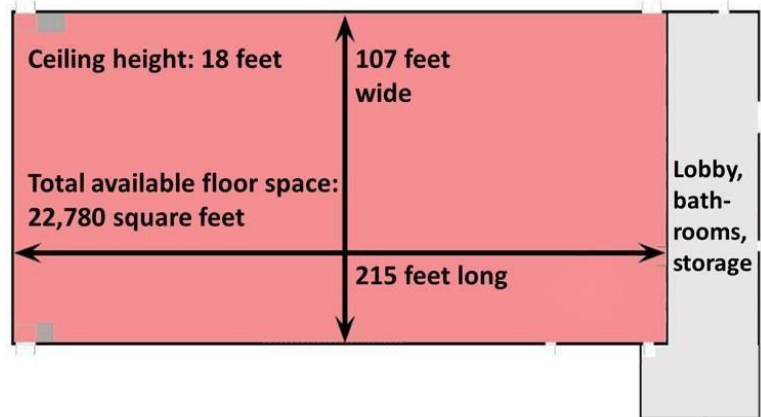
Reasonable timeframe to complete: 3–5 years

Facility

- Existing building upgraded with heating and cooling.
- Year-round, multi-purpose facility that supports multiple recreational uses.
- Special events: Year-round, as appropriate for the facility.

Activities, uses: Examples

- Year-round: Youth soccer, climbing wall, walking, fitness equipment, dance, pickleball, practice sessions
- Note: Activities not possible due to building height or size issues include adult soccer, softball, baseball, American football, volleyball, badminton, takraw



3.3.2 Option 2 Analysis: Recreational activities, exciting or appealing, and community benefits

The analysis below combines responses to the following three questions because they were very similar.

- Questions for **community members** in the general online survey and in virtual and in-person sessions:
 - What recreational activities could you imagine yourself or your family doing in this facility?
 - What excites or appeals to you about this option?
- Question for **local organizations and businesses** in a specialized online survey and in virtual sessions: What broad community benefits or opportunities does this option offer?

I don't see any uses that I would use this for, but whatever the uses are, they should reflect community needs and desires.



Esta es nuestra pista de hielo local. Por favor, no se lo quite. (This is our local ice rink. Please don't remove it.)



Since the ice rink isn't currently used by many in the immediate neighborhood, taking it out could allow for more use of space by the neighborhood.



Do not get rid of the ice rink. You can support the other activities mentioned above during non-winter months. This community needs an ice rink to support the youth and adults in the City of St. Paul.

For this option with multi-use recreation year-round (vs. single-use for hockey from October-March), most of the recreation activities people listed were drawn from the examples provided: youth soccer, climbing wall, walking, fitness equipment, dance, pickleball, or practice sessions.

Nearly all the responses from hockey/ skating proponents to the questions about recreation or what's exciting or appealing rejected Option 2 entirely; most indicated that hockey was the only reason they use the facility and flagged the difficulty of finding ice elsewhere. Some noted that hockey/skating is youth focused and could appeal to local kids.

For those responding to the advantages of this option, many highlighted the importance of better meeting the needs of West Siders, along with community-driven activities and a variety of events. Others were excited

about the additional recreation options that would be available if multiple uses are allowed 12 months of the year, or appreciated the ability to change recreation choices over time to accommodate evolving needs and interests. A few suggested more significant interior improvements such as an indoor biking track or commercial kitchen. Some liked the proximity and access of a year-round, multi-use facility, or anticipated it would build community as more West Siders would “get to know each other and get great exercise at the same time.”

Some responses applauded the cost-effectiveness of updating / improving the existing building and shifting to year-round, multi-use space that is accessible to the community. Others noted that such uses complemented those at the nearby El Rio Vista Recreation Center and neighborhood fields.

3.3.3 Option 2 Analysis: Questions or concerns

This question was asked for community members and local organizations and businesses via general and specialized online surveys and in virtual and in-person sessions.

I am concerned with the removal of the ice rink. The ice rink gets heavy usage throughout the winter and removing it will put much higher demand on other arenas in the area and force teams to travel farther to get to available ice.



This is a strong emphasis on sports as though that is the only way community can come together and be in a space for belonging. I challenge us to think beyond the centering of sports.

Concerns from hockey/skating proponents focused on losing this rink for youth hockey. They noted that ice time is scarce for both children and adults and already forces some adult games to start late at night. Some noted the benefit of those rental fees supporting the cost of facility operations, and perhaps bringing revenues to local businesses. Many highlighted the beneficial “culture” of hockey and the sport’s long-standing importance to Minnesota. A few stressed that the Edgcumbe youth hockey program is very inclusive – welcoming and supporting newcomers, girls, youth of color, and those with limited means.

Concerns were similar to those for Option 1, including the following:

- Current building was built for skating and is unwelcoming and limiting for other uses; cost-benefit of expensive upgrades and remodeling this older building for year-round use; “retrofitting may not be best...”
- Covering additional costs for year-round staffing and upkeep
- Value of making this a year-round, multi-use facility given nearby facilities and outdoor spaces that already meet those recreation needs
- Anticipated low use during the summer when people more often participate in outdoor recreation activities
- The impact of construction down-time

Questions were more often written as suggestions, including the following:

- Creating more flexible space inside and outside
- Providing supports in addition to recreation to better serve neighborhood youth
- Drawing a broad range of people through a variety of recreational options and events, rather than only sports through outreach, incentives, and facility / space redesign

3.4 Option 3: New building designed for multiple year-round recreational uses and events

3.4.1 Option 3: Description

Reasonable timeframe to complete: 5–10 years

Facility

- New building
- Year-round, multi-purpose facility designed to support multiple recreational uses.
- Special events: Year-round, as appropriate for the facility and site.

Activities, Uses: Based on facility design, determined in consultation with the community



3.4.2 Option 3 Analysis: Recreational activities, exciting or appealing, and community benefits

The analysis below combines responses to the following three questions because they were very similar.

- Questions for **community members** in the general online survey and in virtual and in-person sessions:
 - What recreational activities could you imagine yourself or your family doing in this facility?
 - What excites or appeals to you about this option?
- Question for **local organizations and businesses** in a specialized online survey and in virtual sessions: What broad community benefits or opportunities does this option offer?

Responses to this option reflected priorities similar to those expressed for other options, with some interesting nuances. Many hockey/skating advocates imagined an upgraded rink, and a few mentioned other facility improvements to support ice-related uses. Most responses from current ice users were interested in using a new facility only if it had a rink. A number supported a blend of ice-related and other activities over the entire year, typically listing the examples from Options 1 and 2: youth soccer, climbing wall, walking, fitness equipment, dance, pickleball, practice sessions.

If the rink is torn down, I would never support any programs that replace what was a good thing.



(Recreation activities) Nothing - it's not our direct community. We really just skate there.

Allows for developing a comprehensive use plan that meets the current neighborhood and their needs.



I like the idea that the community can be engaged to identify uses and the building tailored to those.



It's an exciting option for that neighborhood to potentially have a brand-new building that provides activities the neighbors want access to.

Other responses focused on the opportunities afforded by a modern, well-designed facility and site to significantly expand year-round access to recreation activities and events for people of all ages and interests – and in this case, eliminating the constraints of the current building on many adult sports and multiple, concurrent uses. Some offered ideas for using the entire site (including the current parking space) differently, more closely integrating indoor and outdoor spaces and uses, incorporating public art, designing a beautiful building, expanding the building size, adding windows, meeting high environmental standards, and ensuring good maintenance. A few were concerned about wasting money on a new building or potentially losing an important revenue stream if there's no ice rink for hockey teams to rent.

While a few were hesitant to comment without knowing what would be possible, most embraced a range of recreational uses, equipment, and spaces, plus events for all ages and abilities; some noted the ability of a new facility to attract new users and build community. Examples included crafts, arts events and activities, “all indoor sports,” music events and activities, fitness classes, training sessions, expositions, markets, play structures, spaces for clubs or other groups, training equipment, so on. More than with the other options, a number of the responses stressed the importance of gathering community input, meeting the needs of West Siders, collaborating with neighboring businesses or organizations to benefit a larger area, or supporting culturally or community-specific activities. They talked about more and better options to meet a range of neighborhood interests and needs, opening the space to a wider variety of people and uses, locally driven decisions, and flexibility.

3.4.3 Option 3 Analysis: Questions and concerns

This question was asked for community members and local organizations and businesses via general and specialized online surveys and in virtual and in-person sessions.

This option will cost a lot of money and will deprive the community and organizations that currently use the facility without its services. New construction is also not as green as reusing current buildings. Some programs may be challenged to continue with the loss of this facility.



Environmentally, I'd tend toward adapting the existing building rather than demolishing which I think would create waste

There were many concerns about costs and the cost-benefit of an entirely new building, especially from hockey/skating proponents. Some argued that the facility was purpose-built for hockey/skating and works great for that, questioned the value of an expensive new building, or worried about the downtime for current users during construction. Others objected to taxpayer funding for a new building that doesn't need to be replaced, or spending money on a new facility if it didn't include an ice rink; some also noted the loss of hockey/ice-time revenues.

A few suggested that such an investment should be done jointly by the county and city and perhaps with support from private and nonprofit entities.

Some participants wondered if there would really be enough demand to justify the high costs of a new facility, especially with a variety of nearby indoor and outdoor recreation facilities in St. Paul, West St. Paul, and Woodbury. Others doubted there would be heavy use during the summer with so many people preferring to spend time outdoors. Some were frustrated about the projected 5-10-year timeline, though a few appear to have misunderstood that to mean the current facility would be closed for multiple years. A few noted the importance of off-street parking or were concerned about traffic congestion or noise.

*Again, I recognize what my family *appreciates is different than what the surrounding neighborhood* needs.*



The current building is so closed and an eyesore. It is not welcoming at all. Hard to figure out where the entrance is.

3.5 Option 4: No building; park-like space designed for several year-round recreational uses and events

3.5.1 Option 4: Description

Reasonable timeframe to complete: 1–3 years

Facility: Existing building is removed and replaced with a new, park-like space.

Site: Year-round, multi-purpose site that could be designed to support multiple recreational uses.

Special events: Year-round, as appropriate for the site.

Activities, uses: Based on the site design, determined in consultation with the community.



3.5.2 Option 4 Analysis: Recreational activities, exciting or appealing, and community benefits

The analysis below combines responses to the following three questions because they were very similar.

- Questions for **community members** in the general online survey and in virtual and in-person sessions:
 - What recreational activities could you imagine yourself or your family doing in this facility?
 - What excites or appeals to you about this option?
- Question for **local organizations and businesses** in a specialized online survey and in virtual sessions: What broad community benefits or opportunities does this option offer?

Most responses advocating hockey/skating couldn't imagine participating in any recreation activities with this option, found little or nothing exciting or appealing, and saw few or no community benefits.

Responses about recreational activities for this park-like option identified a wide range of different and creative ideas for year-round and accessible space for a multiple uses. Many were excited about having more green space "in the heart of the city," with trees, plantings, and all the recreation possibilities that then arise.

Examples included a walking track, playing catch / tag / kickball, picnicking, community events, arts / theater / music events and activities, reading and relaxing, playground activities, small water park or splash pad, skating rink, exercise equipment or tennis courts, fitness activities, movies, and sports fields. Some also suggested inviting food trucks, partnering with nearby businesses to serve park users, a farmers market, community festivals, or community gardens. Many responses focused on meeting the needs of a wide variety of users with this *community* space, flexibility, and being open and welcoming.

A few noted the cost-effectiveness of green space rather than upgrading the current facility or building something new, and the benefit of green space being accessible to all.

I would not come to this space to use the park. St Paul is full of wonderful parks, especially along the river near this area.



None, I just want an ice arena for my kids to skate/play hockey

Everything!! A park space would be an incredible addition to my immediate neighborhood. I bought my home less than a block from the existing rink facility because I love the green space on the bluff, the community garden across the street and the existing amenities. More park space would be such a fantastic addition to this part of the westside!



If the ice rink is demolished, this would be my choice for replacement. A park for the neighborhood. The park should offer flexible spaces for social gatherings, but also include focal elements that bring people to the park, such as a splash pad, nature-based play area, picnic facilities, shade structure, etc.



Yes please!!!! We need open space and nature so badly!!! This is very, very, very exciting!!! Picnics, playing with young children, maybe a small playground area (nature-looking)?

3.5.3 Option 4 Analysis: Questions and concerns

This question was asked for community members and local organizations and businesses via general and specialized online surveys and in virtual and in-person sessions.

With crime in the area and limited parking I think this is the least attractive option. Also, it would be almost unusable in the winter and there are plenty of parks nearby



Why demolish an existing building? How much will it cost? What are the cost benefits? Where will all the current users of the ice go? There are not many nearby indoor rinks for kids.

Responses in support of hockey/skating objected to this option's change from an ice arena to a park-like space. Concerns included losing this heavily used, in-town ice rink for youth hockey programs, the dearth of alternatives, and losing the ice rink revenues. Some noted the ample green space in St. Paul without adding this small site, the unreliability of an outdoor rink due to climate change, that a rink better serves youth than green space, and the wastefulness of using taxpayer money to remove a building serving current ice users plus to create a new green space.

Other respondents were concerned about low use during the winter, multiple large green spaces and pocket parks nearby (some of which are already underused), challenges accessing this space on foot, and the site's proximity to a major roadway and commercial district. A number were concerned this option would attract crime or become a tent city, or that the county wouldn't allocate sufficient funding to maintain it properly. There were a number of general concerns and responses noting that this is just a poor location for a park. Others noted the importance of organized activities for young people rather than more park space.

My concern is I would want the community on the Westside have decision-making role from start to finish and not just as tokens to check the box.



As much as green space is needed, I have to wonder if multiuse recreational space is needed more.



While parks are generally a good thing, here not having a multi-use venue would be a huge miss for the community

3.6 Analysis: New ideas for this facility/site to support year-round recreation and benefit your community?

This question was asked for community members in the general online survey and in some virtual and in-person sessions. Many responses reiterated ideas provided earlier in response to questions about the four options; those are generally not repeated in the analysis below, which focuses on *new* ideas in a year-round context.

Overall, the wide range of ideas here and elsewhere appear to assume some form of active management for the facility and multiple activities and uses. There was also a clear commitment to strong community engagement to ensure the opportunities are relevant and valued by the diverse West Side community. Most responses focused on organized activities – both sports and other recreation activities – delivered through direct programming, partnerships, contracts, leases, or other means. For facility use, participants referenced arrangements similar to the current seasonal rental agreements, many more private events, and various collaborations or shared-used agreements, all of which could be done with much stronger marketing and relationships that would significantly expand year-round uses and users.

For hockey/skating advocates, there was continued strong support for keeping the ice rink during the winter months and adding other activities the rest of the year. Most of the ideas for those spring-summer-fall activities are described in the four options above. The table below includes *examples of new ideas* offered in response to this question (note that a few of these assume year-round ice).

Winter/ice season	Spring-summer-fall
<ul style="list-style-type: none"> • Off-ice spaces for workouts and training • Hockey tournaments to raise revenue • Hockey for girls and women • Open the facility for St Paul schools students to play hockey; partner with hockey organizations to get more kids involved; subsidize youth to learn to skate and try hockey • More open skate time for figure skaters • One or more additional rinks in the facility 	<ul style="list-style-type: none"> • Roller hockey • Dry-land hockey training area and equipment • Hockey and figure skating lessons, clinics
<ul style="list-style-type: none"> • Year-round hockey / skating • More proactive communications and scheduling to fill the space with year-round hockey/skating users 	

Others offered a variety of new ideas related to various options and beyond, with examples as shown below.

- **Activities, facility improvements**
 - Indoor playground and toddler space; spaces and activities for adults, seniors
 - Indoor martial arts, archery, youth drone program, roller skating, skateboarding, tracks of various kinds
 - Convert the rink to turf during the off-season (example: Northeast Minneapolis arena)
 - Space / facilities to support sports or other activities such as bathrooms, changing rooms,

Some open / green space including a community vegetable garden and a new building with youth league sports, classes, and lessons, as well as similar programs for adults and the elderly, a swimming pool with open swim and swimming lessons.



Please have community conversations so that we can get more input. This is a big decision and the people who live in the area should have their voices heard.

- space for classes and other learning opportunities
- Fix-it or maker spaces
- **New construction / hybrid indoor-outdoor**
 - Building up or down on the site
 - Larger space for soccer, baseball, softball, golf
 - Swimming pool(s)
 - New building for year-round recreation integrated with outdoor space for sports and recreation activities
 - Indoor or outdoor dog park
 - Refrigerated outdoor rink