

# **Bruce Vento Regional Trail**

## **Community Engagement Meeting**

**Public Meeting No. 3**

## Highlighted Projects

- Final Design for Buerkle Road to Highway 96
  - 30% plan graphics
- Highway 96 to County Road J planning update
  - Downtown Highway 61 alignment assessment
  - Alternate corridor alignment assessment
- Master Plan Amendment
  - Long-term trail improvements
  - Trail amenity needs analysis
  - Connection to Rush Line

## Community Engagement Overview

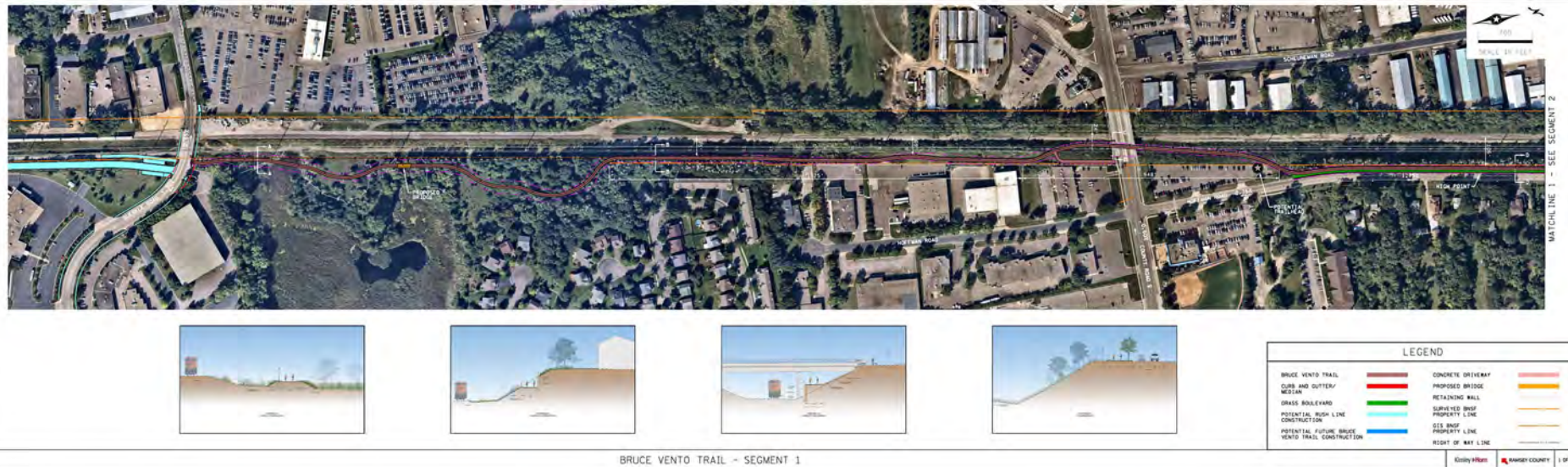
- Buerkle Road to Highway 96
  - Preliminary Design Study
    - May 18, 2016
    - May 26, 2016
- Highway 96 to County Road J
  - October 4, 2018
  - October 25, 2018
- Bruce Vento Regional Trail Master Plan
  - Rush Line Coordination (throughout 2019)
    - Community Events
    - Tuesday on the Trail
    - Visioning Framework Survey
    - Pop-up events

## **Buerkle Road to Highway 96**

### **Project Goals**

- **Final Design for Buerkle Road to Highway 96**
  - Complete Final Construction Plans (Shovel Ready Project)
  - Align with Regional Solicitation Funding Opportunities

# Buerkle Road to Highway 96



Segment 1: Buerkle Road to Hoffman Road

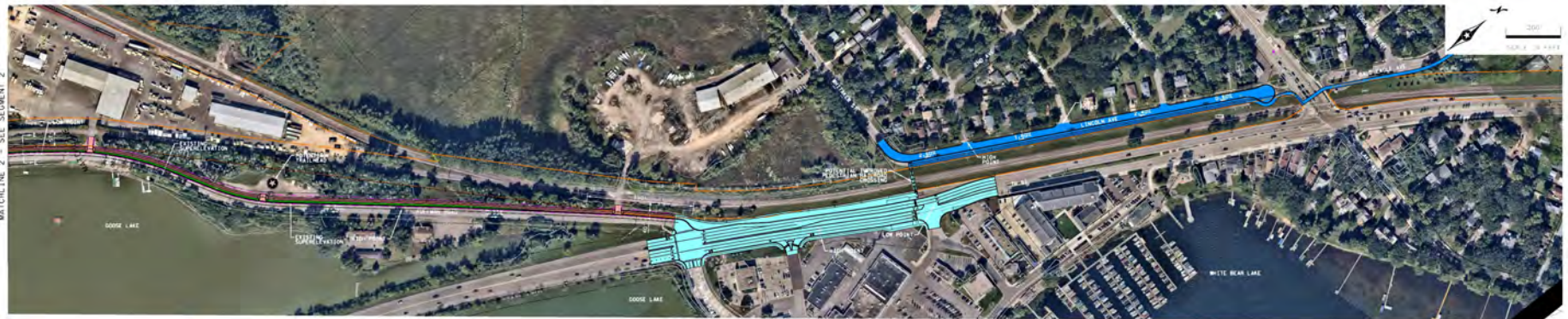
# Buerkle Road to Highway 96



Segment 2: Hoffman Road (Highway 61 to Goose Lake)



# Buerkle Road to Highway 96



LEGEND		
BRUCE VENTO TRAIL	CONCRETE DRIVEWAY	
CLUB AND GUTTER/MEDIAN	PROPOSED BRIDGE	
GRASS BOULEVARD	RETAINING WALL	
POTENTIAL HIGH LINE CONSTRUCTION	SURVEINED SHOULDER	
POTENTIAL FUTURE BRUCE VENTO TRAIL CONSTRUCTION	PROPERTY LINE	
	GIS BINGO	
	PROPERTY LINE	
	RIGHT OF WAY LINE	

BRUCE VENTO TRAIL - SEGMENT 3

Segment 3: Hoffman Road (Goose Lake to Highway 61/White Bear Avenue)

## Highway 96 to County Road J – Planning Update

### Project Goals

- Highway 96 to County Road J planning update
  - Refine potential alternative trail alignment search corridors
  - Provide trail connections to Rush Line BRT and downtown White Bear Lake
  - Provide basis for Master Plan Amendment



# Alignment Concepts

## 10/4/18 and 10/25/18 meetings



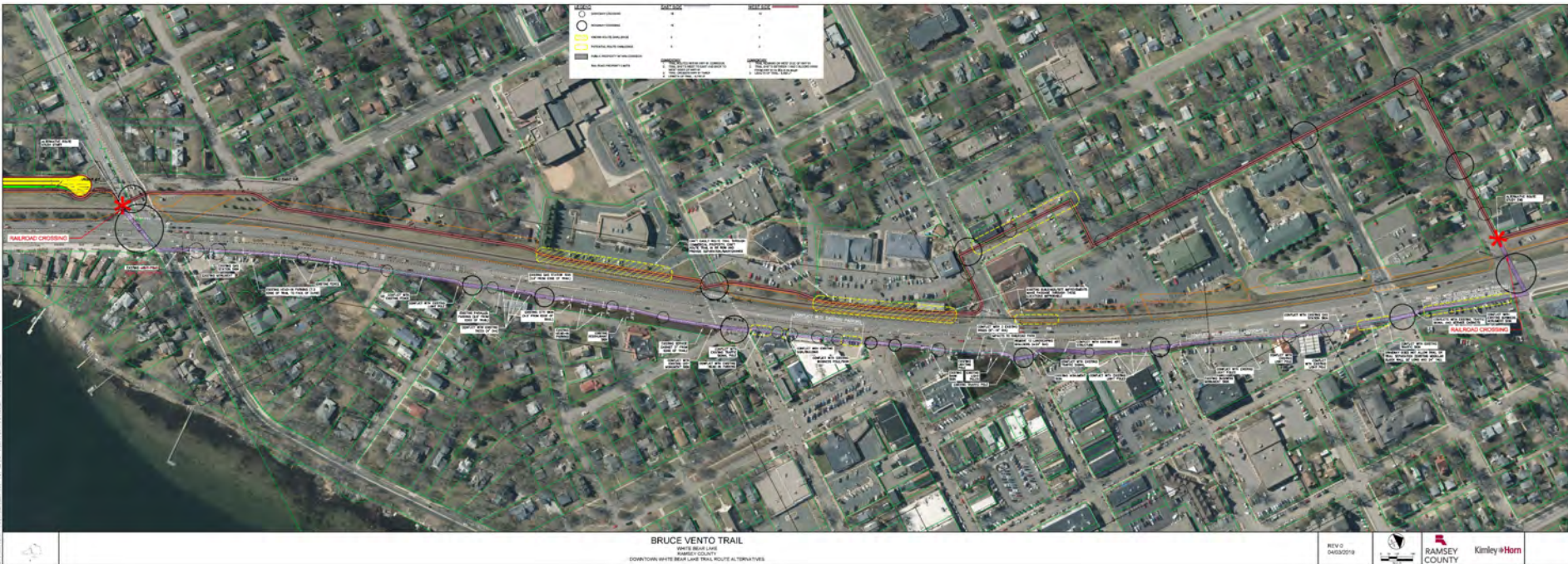
## Highway 96 to County Road J – Planning Update

### Meeting Outcomes: 10/4/18 and 10/25/18

- Revisit downtown alignment
  - Can it still be located near or adjacent to existing alignment?
  - Exhaust all options
- Phased approach
  - Downtown sections vs. other sections
- Can railway or Highway 61 right-of-way be used?
- Downtown bike and pedestrian friendly
- Connection to Rush Line
- Can Long Ave be considered?
- Flexible trail width
- Additional pedestrian crossing improvements at Highway 96



# Highway 96 to County Road J – Planning Update



## Downtown Analysis - Completed

- Existing railway right-of way areas
- Existing Highway 61 right-of-way
- Adjacent private property
- Lake Avenue/Clark Avenue

## Downtown Analysis – Summary

- Too many impacts to private property
- Too many trail conflicts with existing infrastructure
- Lack of available trail corridor space

## Highway 96 to County Road J – Planning Update

### Additional Corridor Analysis

- Bald Eagle Avenue
- Bald Eagle Boulevard
- Division Street
- Long Avenue
- 5<sup>th</sup>, 8<sup>th</sup>, 12<sup>th</sup>, Stillwater Street
- Park Avenue
- Eagle Street
- Beaver Street
- Buffalo Street
- Taylor Avenue
- Hugo Road



# Highway 96 to County Road J – Planning Update

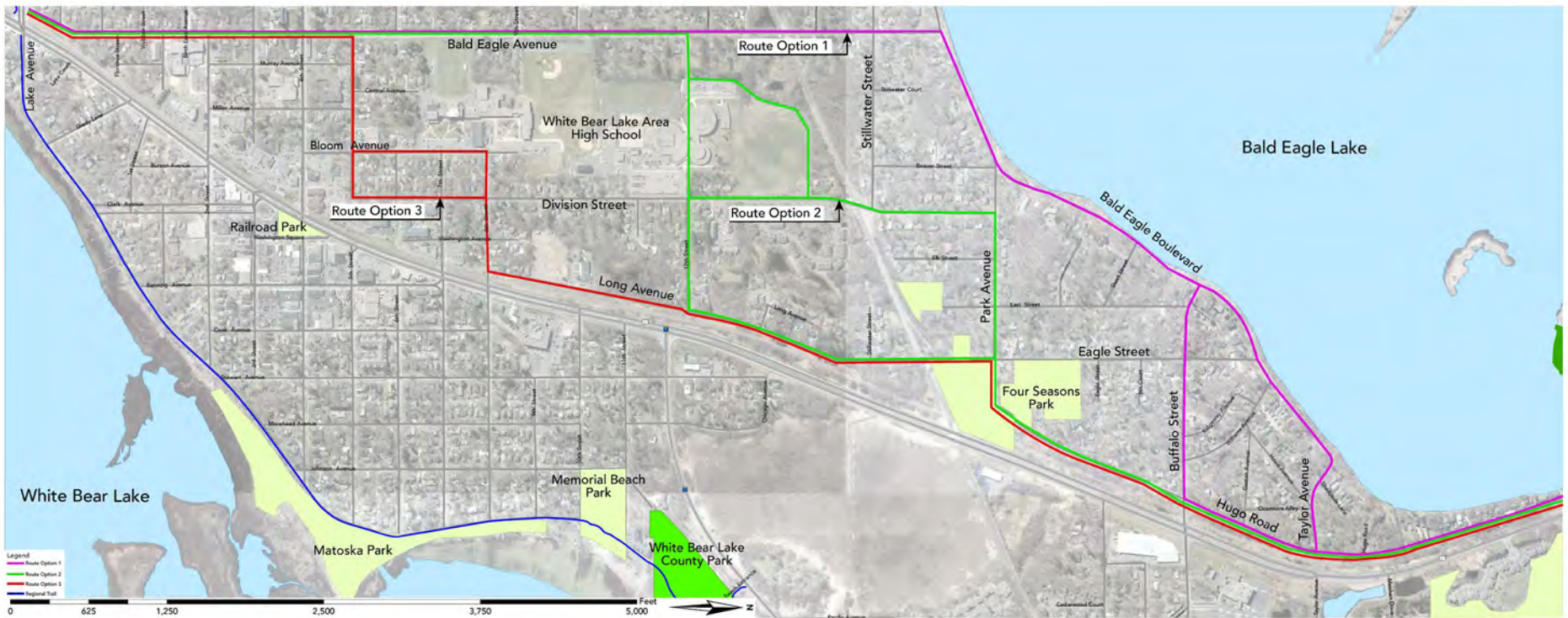




# Highway 96 to County Road J – Planning Update



# Highway 96 to County Road J – Planning Update



## Corridor Realignment Options

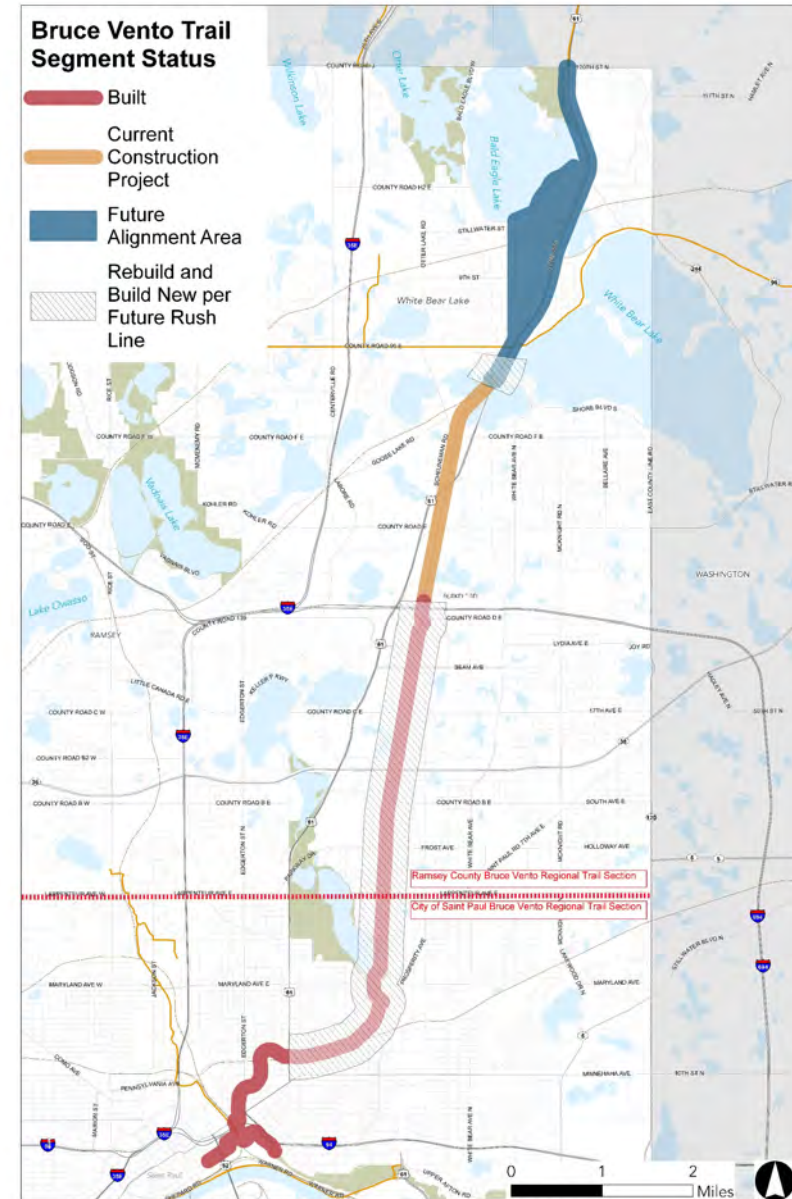
- Option 1: Bald Eagle Ave - Bald Eagle Blvd – Buffalo/Taylor - Hugo Rd
- Option 2: Bald Eagle Ave - School Grounds – Division/Long - Park - Hugo Rd
- Option 3: Bald Eagle Ave - 5<sup>th</sup> - Division/Long - Park - Hugo Road



# Master Plan Amendment

## Project Goals

- Master Plan Amendment (plan includes)
  - Boundaries and acquisition costs
  - Demand forecast
  - Development concept
  - Conflicts
  - Public services
  - Operations
  - Public engagement and participation
  - Accessibility
- Identify long-term trail improvements from Larpenteur Avenue to County Road J
- Identify trail amenities throughout corridor
- Connection to Rush Line



# Master Plan Amendment

Which amenities would you most like to see along the Bruce Vento Trail?



Informational Kiosk



Trash/Recycling Receptacles



Bike Parking



Dog Pick-up Bags



Benches



Trailhead Sign



Gateway Feature



Bike Fix-It Station



Art Installation



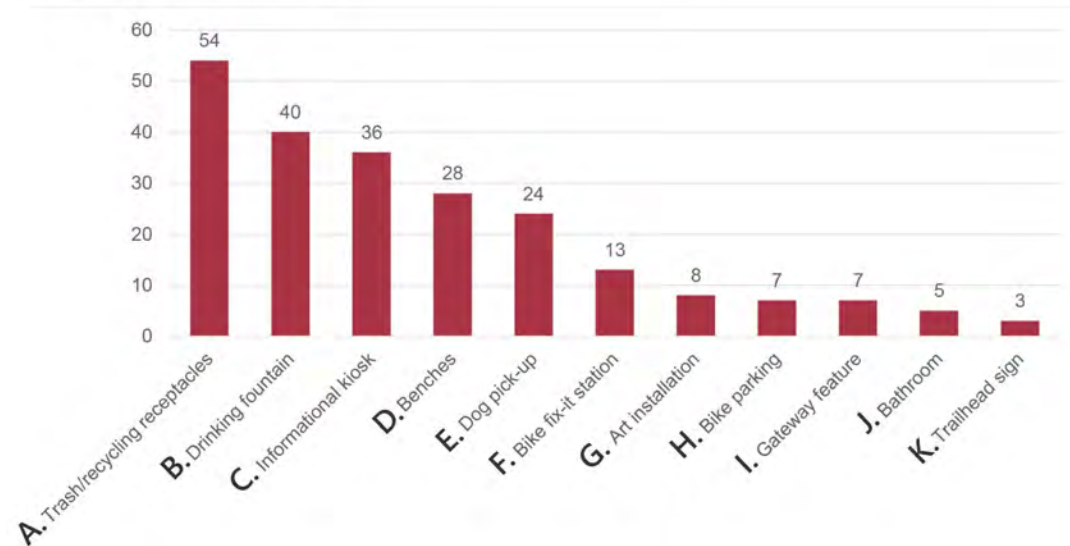
Drinking Fountain

# Master Plan Amendment

## Rush Line BRT Public Engagement: Visioning Study - Trail Amenities

- Visioning Framework Workshop
- Community Meetings
- Pop-up events
- Tuesday on the Trail events

Trail Amenities Summary



A



B



C



D



E



F



G



H



I



K



# Thank you for coming!

## Contact Information

PH: 651-748-2500

E-Mail: [Parks@CO.ramsey.mn.us](mailto:Parks@CO.ramsey.mn.us)