



RAMSEY COUNTY

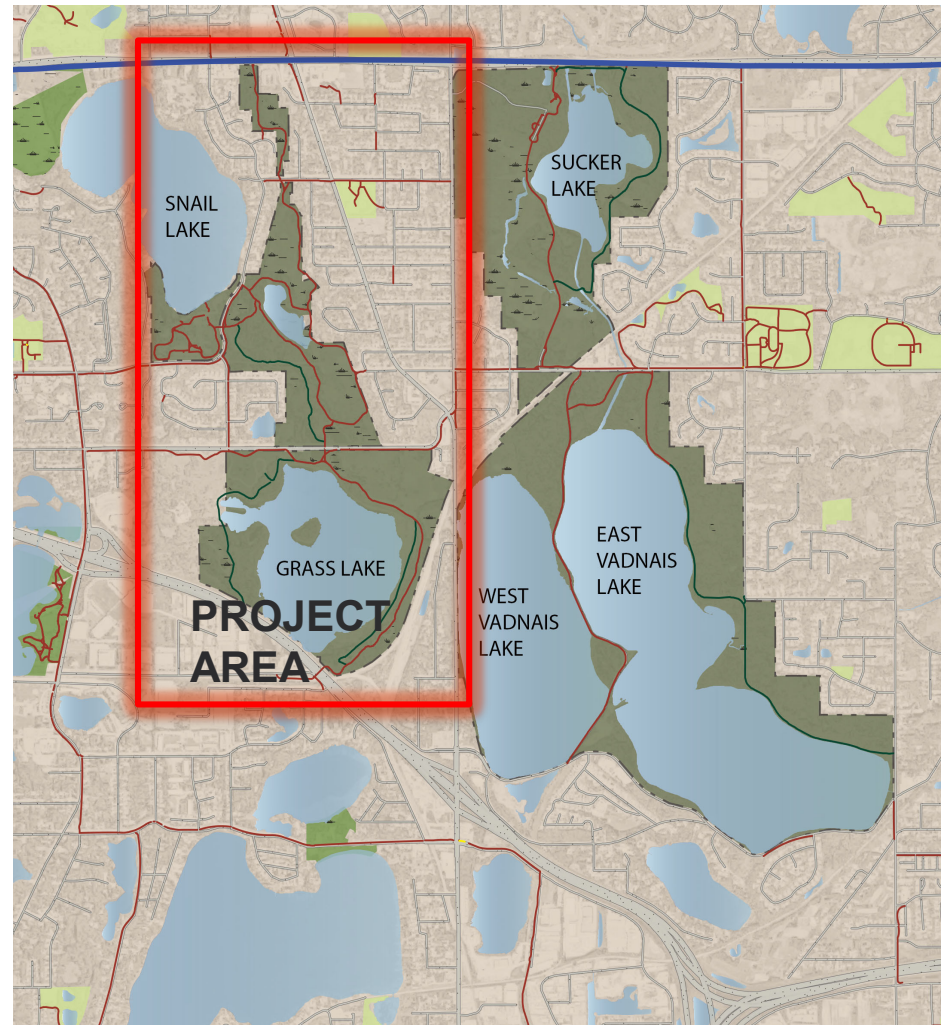
Master Plan Update for Flood Affected Park Infrastructure

Meeting No.2 - Concepts

Vadnais-Snail Lakes Regional Park

What is the Project?

- Determine new location for flood impacted park picnic facilities and trails
- Not a complete redesign of the park



SUMMARY OF COMMENTS FROM PUBLIC MEEETING No.1

- Trail loops are preferred
- Boardwalks are an accepted solution to flood prone trails
- Keep turf trails unpaved
- Create alternate connections around flooded tunnels at Gramsie Rd and Snail Lake Blvd.
- Make the trails resilient to future flooding



DESIGN CONSIDERATIONS FOR PICNIC FACILITIES

- Future flood resiliency
- User Experience
- Proximity to park amenities
- Access to parking



VADNAIS-SNAIL LAKES REGIONAL PARK MASTER PLAN UPDATE



SNAIL LAKE PICNIC AREA



OPTION A

Pros:

- Shelter over looks the lake
- Near other picnic facilities/tables
- Parking lot access

Cons:

- Far from Beach
- No restroom

OPTION B

Pros:

- Close to Beach
- Near other picnic facilities/tables
- Close to restroom

Cons:

- Setting not perfect with proximity to parking lot
- Activities from pavilion maybe in conflict

DESIGN CONSIDERATIONS FOR TRAIL FACILITIES

- Future flood resiliency
- Floodplain fill
- Wetland Impacts
- Stormwater Impacts
- User Safety
- ADA Compliance
- Trail Connectivity, Trail loop creation
- Length of Trail
- Cost and funding sources – Lower the cost, the greater chance of funding
- User Experience
- Maintenance – short term and long term; Winter vs. Summer
- Aesthetics/Visual impacts
- Trail use in different conditions i.e. – hot and dry, wet, snow and ice, etc.



TRAIL FACILITY OPTIONS

- Paved Trails – limited areas due to poor soils
- Unpaved natural surface trail - not as accessible
- Fixed Boardwalk – more expensive in open water
- Floating Boardwalk – has issues in wetland areas, not bike friendly



[drakester96](#) | [Instagram shiannesinclair](#) | [Instagram](#)

WETLAND A AREA

CONCEPT A (ALL BOARDWALK)

Pros:

- Completes a trail loop
- Re-establishes existing trail layout
- Creates trails resilient to flooding

Cons:

- Funding \$\$\$\$
- Future funding timetable uncertain

VADNAIS-SNAIL LAKES REGIONAL PARK MASTER PLAN UPDATE



WETLAND A AREA

CONCEPT B

(DIRECT CONNECTION)

Pros:

- Re-establishes east-west connections across Wetland A
- Existing flood prone trails to be maintained or converted to “natural surface” trails as water recedes
- Less \$ than Concept A & C
- Proposed trails resilient to flooding
- Focus shifts to Concept C or Grass Lake loop Concept

Cons:

- No Wetland A loop



GRASS LAKE AREA

Pros:

- Completes trail loop around Grass Lake
- Creates flood resilient trails

Cons:

- Funding availability directly related to Wetland A area concepts



VADNAIS-SNAIL LAKES REGIONAL PARK MASTER PLAN UPDATE



Tonight's Meeting Format

The Master Plan will address the following areas:

1. Snail Lake Area Picnic Facilities Concepts
2. Wetland A Trails Concepts
3. Grass Lake Trails Concept

Area Concepts are represented at individuals tables. Please write comments or draw on the maps provided. Staff available to answer questions

Written comments collected in comment box.