



Ramsey County Off-Leash Dog Areas

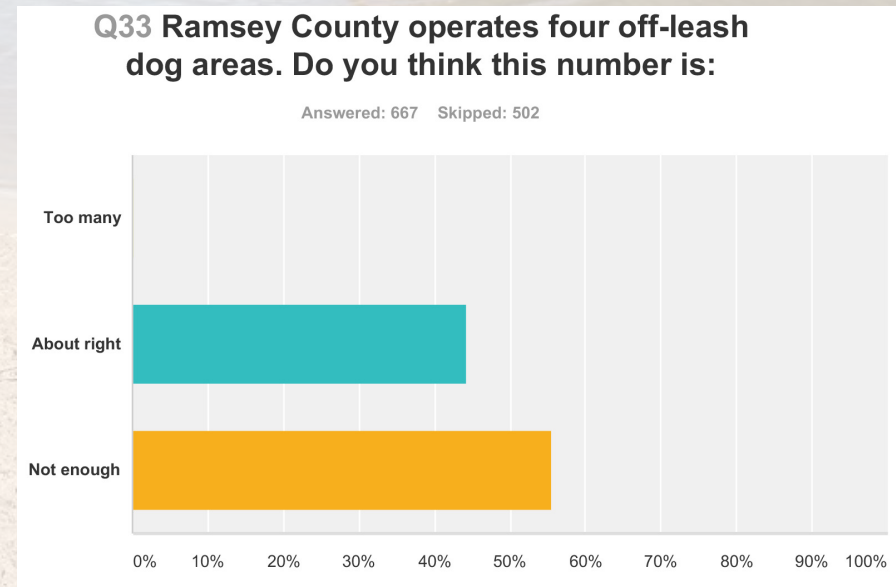
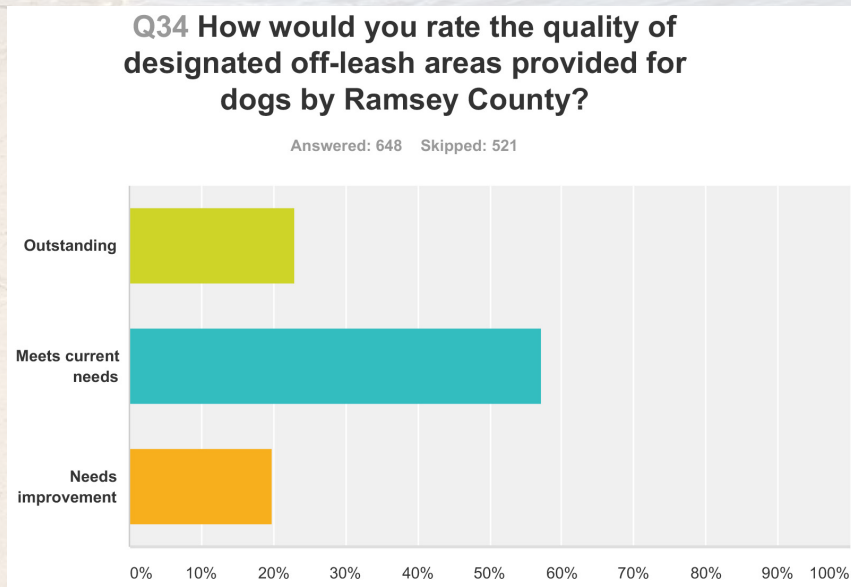
**Master Plan Review
& Next Steps**

Master Plan Overview

- Master Plan: overarching document that sets standards and guidelines across the system as a whole
- Look at Dog Parks as a whole system, not just one park
- Important Consistent Program Elements to be Included
- Important Consistent Site Amenities to be Included
- Access: Do we have enough parks in the System
- Rules: Are we where we need to be, do we need to modify?
- Maintenance Program
- Volunteer Program

Public Engagement Meetings & Survey Results

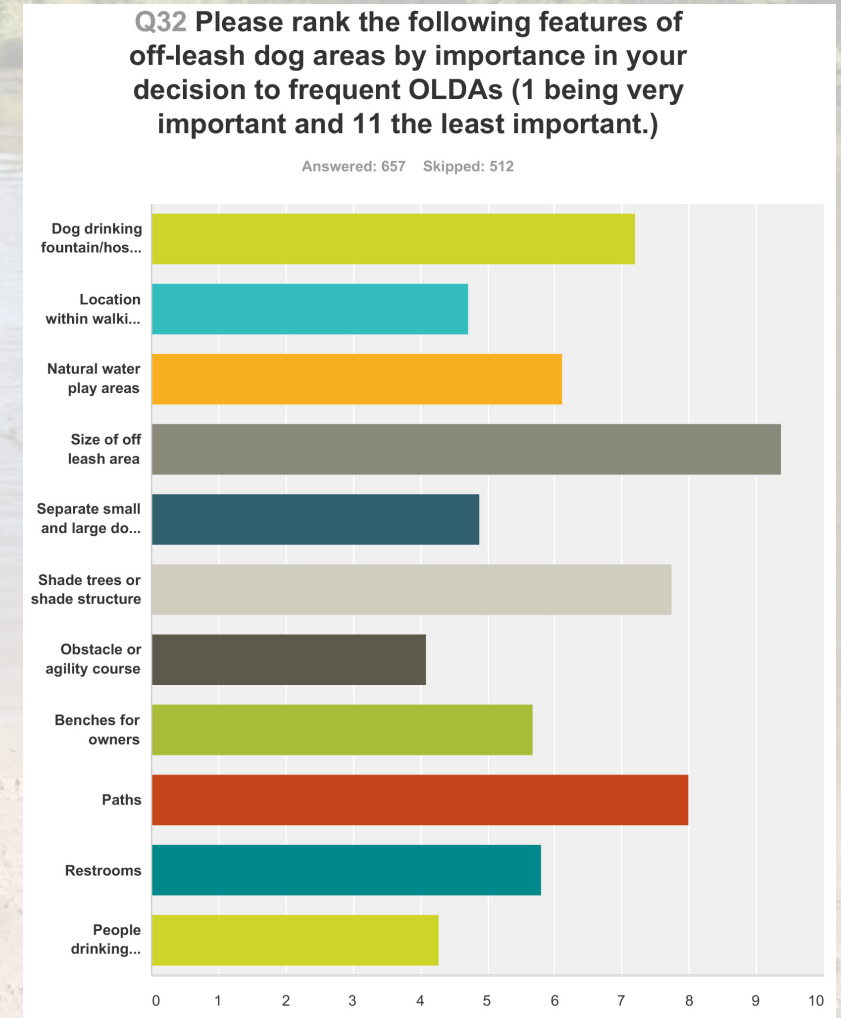
- People Overwhelmingly Drive to the Park, Greater Than 95%
- Public split on whether the county operates enough off leash dog areas
- Most people think Ramsey County is meeting current needs based on quality of off leash dog areas



Amenities Desired in an Off Leash Dog Area

- Top Features & Amenities

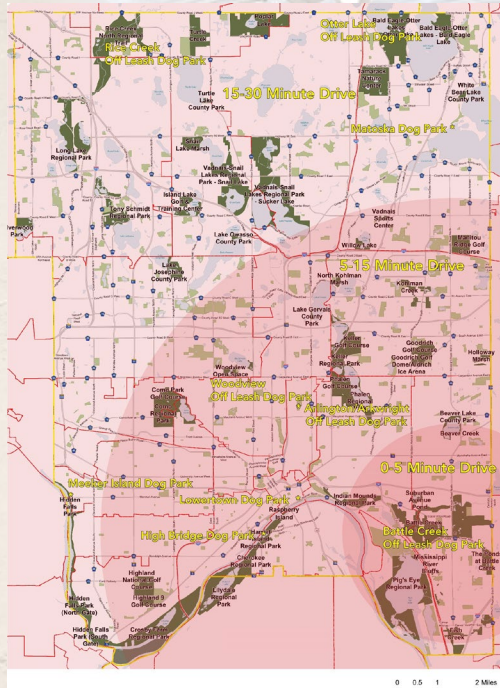
1. Size of Off Leash Dog Area
2. Paths
3. Shade Trees or Shade Structure
4. Drinking Fountain or Hose Bib
5. Natural Water/Water Play Areas
6. Restrooms
7. Benches
8. Separate Small and Large Dog Areas
9. Location within Walking Distance
10. People Drinking Fountain
11. Obstacle or Agility Course



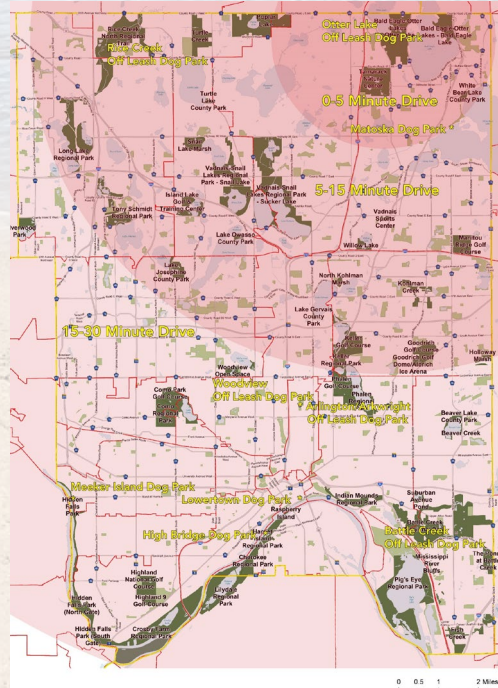
Off Leash Dog Area Locations

- County Goal is to provide an Off Leash Dog Area within 20 minute drive of any resident.
- Currently any resident can drive 15 minutes or less and be at an Off Leash Dog Area.
- 75% of survey respondents say they would drive up to 15 minutes.

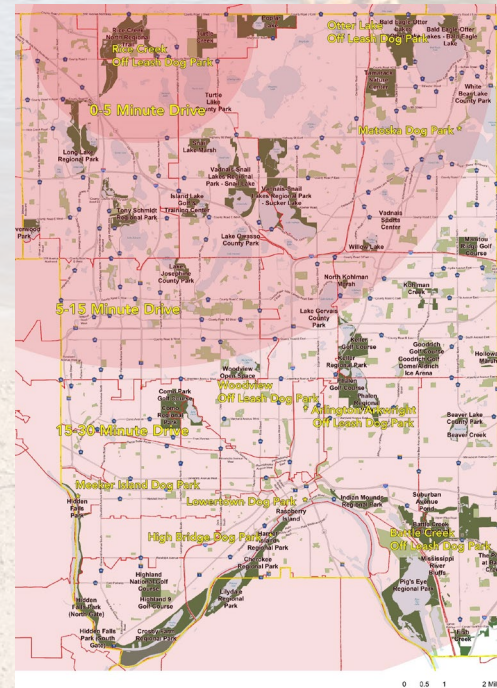
Battle Creek



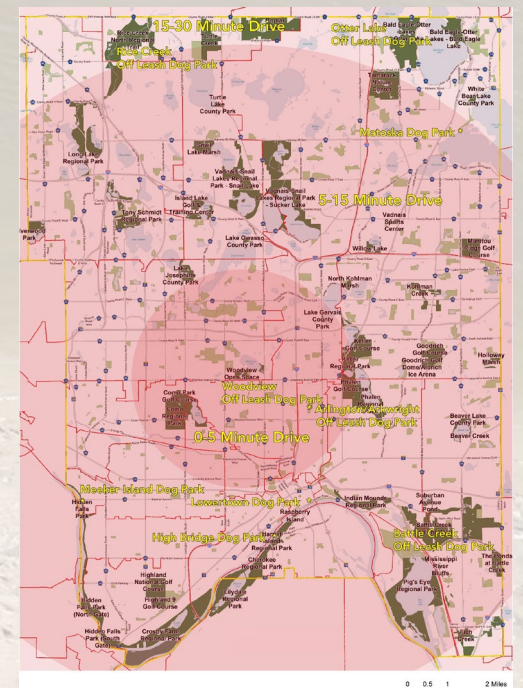
Otter Lake



Rice Creek



Woodview



Comparative Analysis

- Ramsey County off leash dog areas have on average an equal amount or greater amenities than nearby park systems
- Ramsey County off leash dog areas are larger in size than nearby park systems and includes the largest fully fenced off leash dog area (Battle Creek)
- Ramsey County charges no fees while every other municipality/park district charges for off leash dog area use.

Rules & Regulations Recommendations

1. Owners must clean up and dispose of feces.
2. Dogs must be leashed prior to entering and upon leaving the off leash area and in transition corridors
3. Owners must be in verbal control of their dogs at all times and prevent aggressive behavior, biting, fighting, or excessive barking. If a dog becomes aggressive, or gets into a fight it shall be leashed and escorted out of the park immediately.
4. Owners must have visible leash at all times.
5. Owners are liable for damage or injury inflicted by their dogs.
6. Dogs must stay within signed boundary.
7. Dogs must be properly licensed and vaccinated.
8. Dogs in heat are not allowed.
9. For every handler there shall be a maximum of two dogs.
10. Children under the age of 12 must be accompanied and supervised by an adult, and should be educated about safe behavior around dogs. (Do not run, scream, offer food, pet a strange dog without permission, etc.)
11. Owners must comply with all park rules and regulations.

Rules & Regulations Recommendations

- In Addition the master plan found in its design recommendations that one Off Leash Dog Area Rules Sign shall be posted at every entrance and any miscellaneous or duplicative signage shall be moved to a bulletin board to be made available at every entrance.



Rules Sign at Rice Creek off leash dog area, in compliance with Ramsey County Wayfinding Master Plan



Duplicative Signage at Otter Lake off leash dog area. Over Stimulation may cause users to bypass any rules signs and is recommended to be moved to a bulletin board to be provided by the county

Off Leash Dog Area Design Standards

Site Selection

1. Size
2. Parking
3. Shade
4. Conflict With Recreational Activities
5. Accessibility
6. Natural Resources
7. Water Access

Site Amenities

1. Fencing
2. Drinking Water
3. Restroom Facilities
4. Trash Receptacles
5. Picnic Tables & Benches
6. Surfacing
7. Separate Areas for Large & Small Dogs
8. Signage
9. Americans with Disabilities Compliance
10. Entrances
11. Ease of Maintenance
12. Waste Bag Dispensers
13. Agility Equipment
14. Shade
15. Trails

Future of Maintenance and Operations

- Plan recommends that the county look into a donation system to aid with maintenance and development costs of off leash dog areas.

Stewards

1. be the eyes and ears on the ground at the dog parks and communicate any problems or concerns that the dog park may have: maintenance issues, dangerous users, ideas and input.
2. Clean up the park as you walk around: pick up any trash, pick up stray dog poop, refill poop bags.
3. Have an open line of communication with the Ramsey County Recreation Services Supervisor, so that we can get your input.
4. Recommend ideas to help improve the dog park and pitch in your talents to make those ideas come to life.
5. Recruit volunteers

Ramsey County

1. Miscellaneous repairs
2. Mow
3. Snow Removal
4. Trash Removal (with the inclusion of 8-10' trails for access)
5. Other Ideas

Phasing Priorities & Next Steps

1. Woodview Open Space Off Leash Dog Area is currently in the worst condition of any of the county's off leash dog areas. There are numerous hazardous trees making the large dog area unsafe along with litter, tractor tires etc. The top priority concerning off leash dog areas should be to clean up and make this area safe for the numerous users.
2. Woodview Open Space Off Leash Dog Area is the only OLDA that does not meet criteria for a regionally sized off-leash area. Efforts should be made to expand the useable space of the Woodview OLDA.
3. All existing county off-leash dog areas shall be evaluated and reviewed according to the design guidelines and standards outlined in the Off-Leash Dog Area Master Plan. Cost estimates should be put together for each park in order to bring the off-leash dog area up to the design standards of the master plan.

Phasing Priorities & Next Steps

Summer Fall 2019: meet with stewards, volunteers and county representatives at each OLDA to field questions and look at any new issues within the park.

Fall/Winter 2019: Second Meeting for each park to present basic concepts/improvements to existing facilities as outlined in the master. Hold Design Charrette that evening to look at alternatives of delivery to accomplish design standards in accordance with the master plan.

Winter 2019/Spring 2020: Present 2-3 Concepts for each park to find the best options for a finalized plan. Gather additional Public input.

Spring/Summer 2020: Present Final Concept for each.

Fall 2020: Funding for off leash dog areas may be available.

Phasing Priorities & Next Steps

Bald Eagle Regional Park

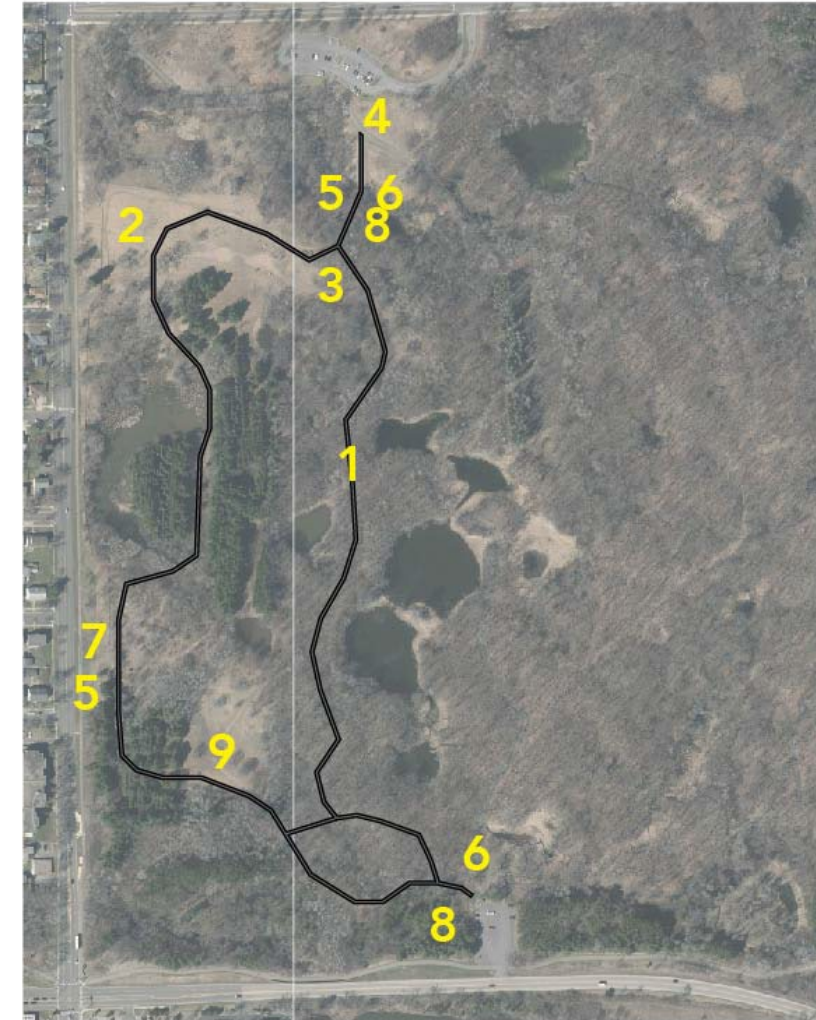
1. Addition of an accessible route for the inclusion of all park users as well as maintenance operations
2. Permanent fencing around wetland and other sensitive areas.
3. Accessible concrete bench pads and trash receptacles
4. Bring a dog and human drinking fountain and water line up to the off-leash area entrance.
5. Double gated entry at south entrance.
6. Install Trash Receptacles throughout the off leash area along with waste bag dispensers.
7. Remove Signage on fences and relocate to bulletin board.
8. Install Rules Sign in accordance with Ramsey County Wayfinding Master Plan



Phasing Priorities & Next Steps

Battle Creek Regional Park

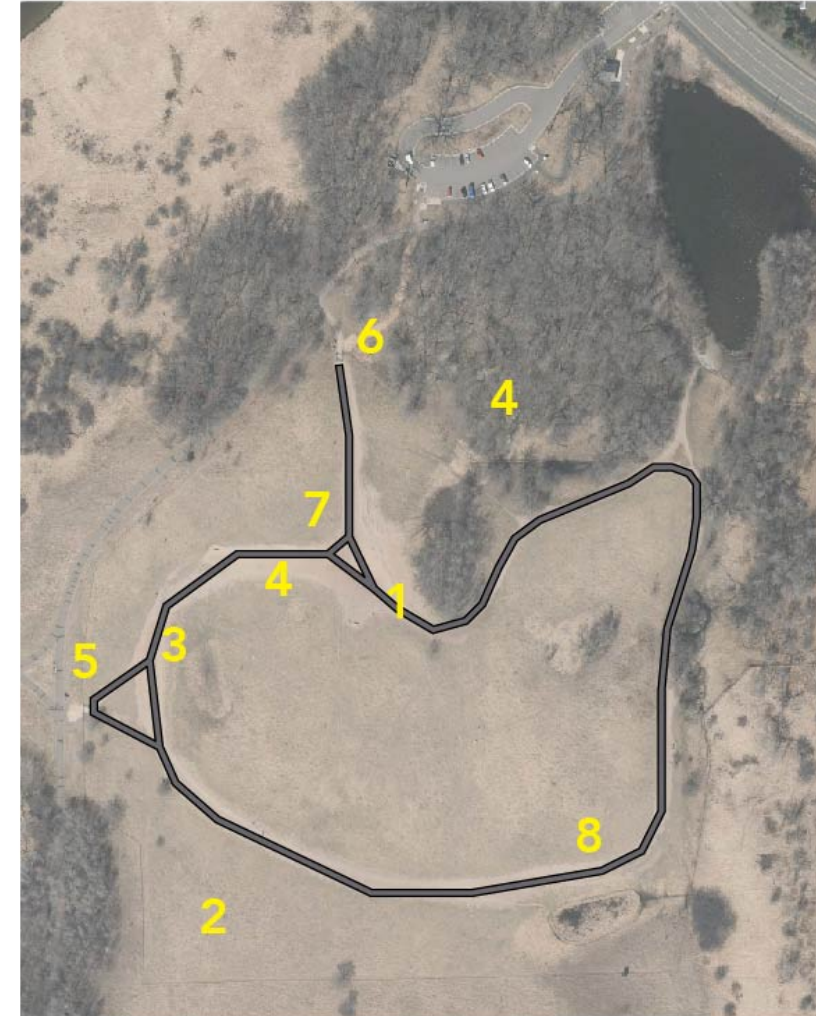
1. Addition of an accessible route for the inclusion of all park users as well as maintenance operations
2. Accommodate an area within the off leash dog area for small dogs only by fencing off a portion of the site with a double gated entry.
3. Accessible concrete bench pads and trash receptacles.
4. Bring a dog and human drinking fountain and water line up to the off leash area entrances
5. Double gated entries at all entrances
6. Remove Signage on fences and relocate to bulletin board.
7. Install 10' maintenance gate
8. Standardize rules boards at entrances, follow Ramsey County Wayfinding Master Plan
9. Install Trash receptacles throughout the off leash area along with waste bag dispensers.



Phasing Priorities & Next Steps

Rice Creek Regional Corridor

1. Addition of an accessible route for the inclusion of all park users as well as maintenance operations
2. Accommodate an area within the off leash dog area for small dogs only by fencing off a portion of the site with a double gated entry.
3. Accessible Concrete bench pads and trash receptacles
4. Look into the possibility of expanding the off leash area boundary to include more trees for shade, planting additional trees for shade, or constructing a shade structure.
5. Install a 10' maintenance Gate.
6. Bring a dog and human drinking fountain and water line up to the off leash area entrances.
7. Accessible concrete bench pads and waste receptacles
8. Install trash receptacles throughout the off leash area along with waste bag dispensers



Questions

Please Visit the Parks & Recreation website to view the full
OLDA Master Plan