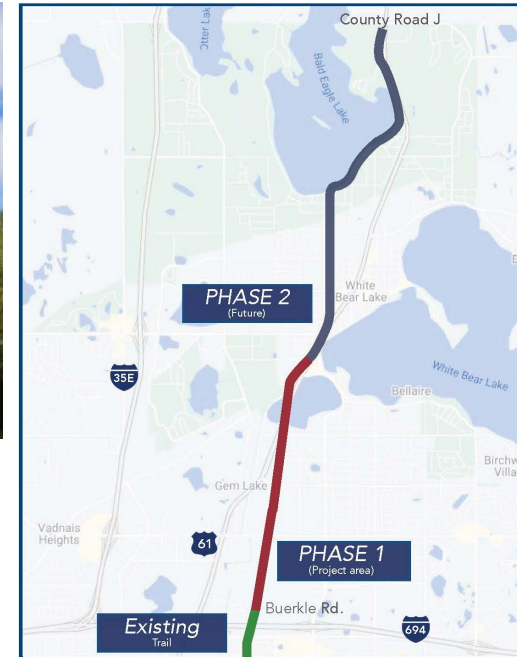


- Buerkle Road to Intersection of Hoffman Road/Highway 61.
  - 2.7 miles.
- Health & Safety
  - Improve health/vitality.
  - Dedicated 12' wide off-road trail.
  - Safe trail crossings.
- Strategic Priorities
  - Residents First, Climate Mitigation/Resiliency, Intergenerational Prosperity, Racial & Economic Inclusion.
- Racial & Health Equity
  - Connecting racially & ethnically diverse communities.
- Efficiency
  - Re-aligned trail corridor out of railway.
  - Reduced operation & maintenance costs.
- Timing & Readiness
  - Final design (90%).
    - Project permitting remaining.
- External Financing
  - Approved federal funding (FY 2025) - \$4 million.
  - Requested state bond funding - \$5 million.
  - Requested Ramsey County funding - \$1 million.



Bruce Vento Regional Trail Extension Area - Buerkle Road

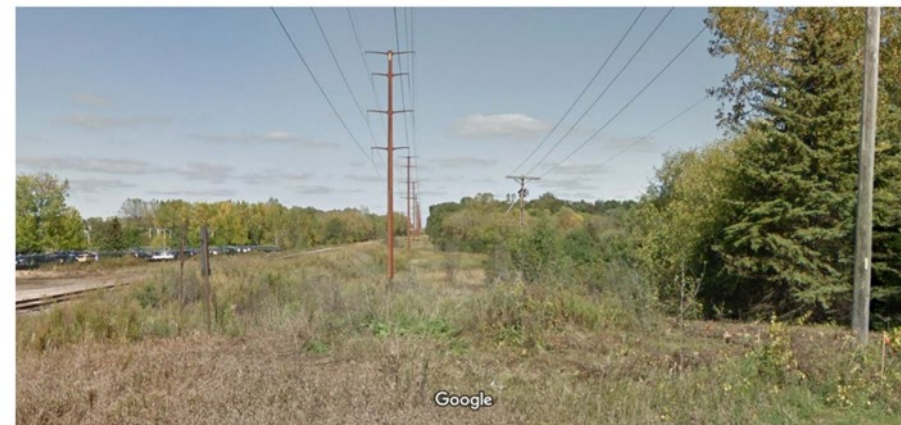
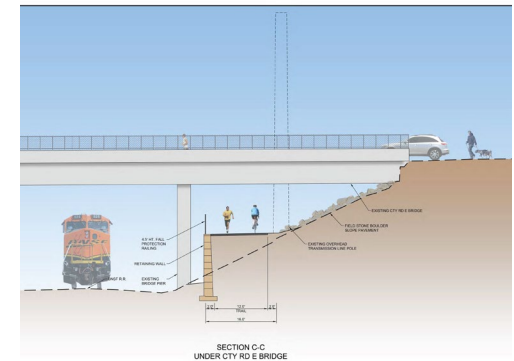
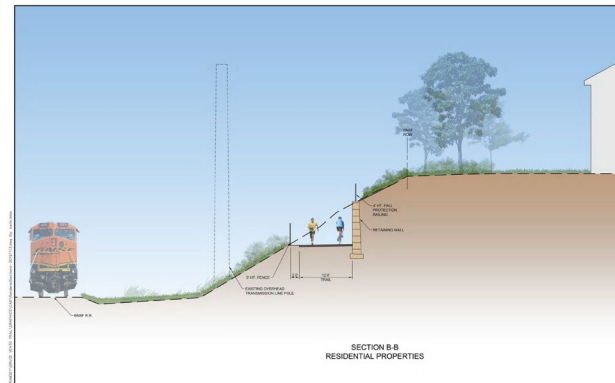
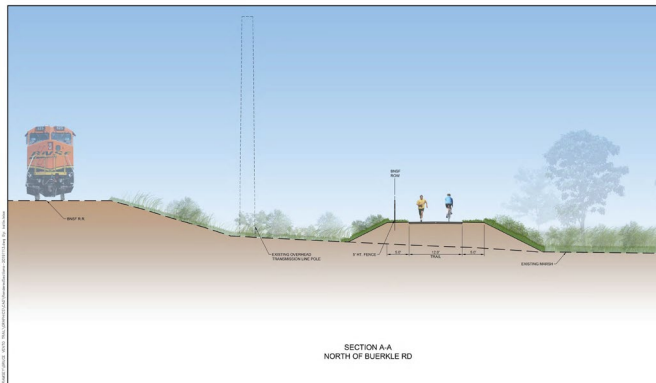


Image capture: Oct 2017 © 2018 Google

**Buerkle Road to County Road E Section:**

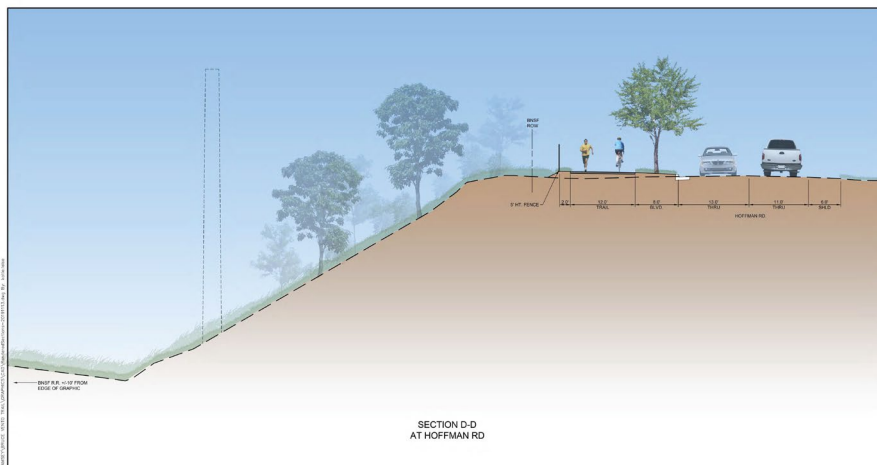
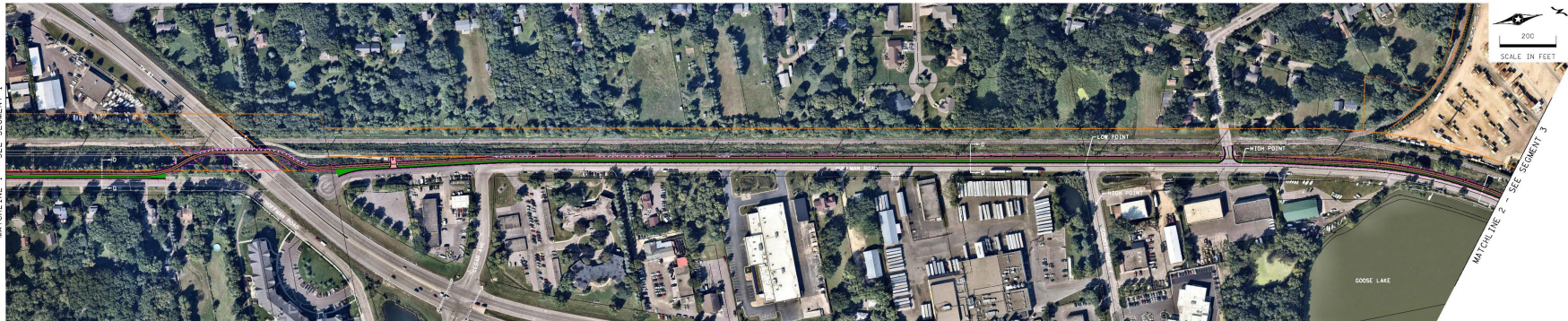
- At-grade crossing improvements at Buerkle Road.
- 12' wide off-road trail out of railway.
- Future local trail connection (Willow Marsh Reserve).
- Trail access to residential and commercial properties.
- Trail underpass at County Road E.
- Trailhead at County Road E.
- Access to bike lanes on County Road E.
- Site amenities & wayfinding.
- Native landscape restoration.





**Hoffman Road Section:**

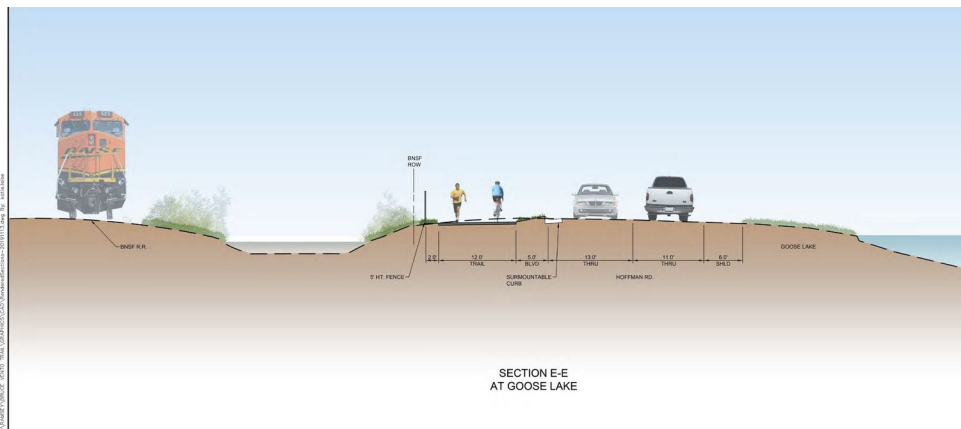
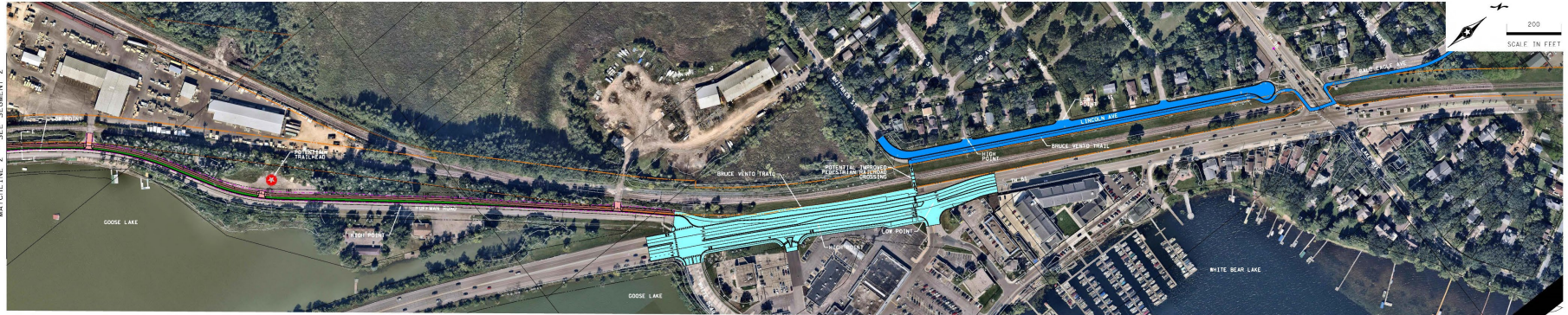
- 12' wide off-road trail out of railway.
- Trailhead at County Road E.
- Trail access to residential and commercial properties.
- Trail underpass at Highway 61.
- At-grade crossing improvements at Scheuneman Road.
- Site amenities & wayfinding.
- Native landscape restoration.





**Hoffman Road Section (continued):**

- 12' wide off-road trail out of railway.
- Trail access to commercial properties.
- Viewsheds to Goose Lake.
- Access to pedestrian crossing at Highway 61.
- Connection to South Shore Boulevard Trail (through local trail connections).
- Site amenities & wayfinding.
- Native landscape restoration.



**Note:**  
 The Highway 61 road re-alignment concept highlighted in cyan color is not part of the Bruce Vento Phase 1 project. This road re-alignment concept was part of a previous Purple Line Bus Rapid Transit route concept and is not moving forward.