

PLOT DATE: Sep 18, 2019 - 12:10pm
FILENAME: \\dsn01.tkda.com\projects\h-z\RamseyCty\17452003\04_Production\01_CAD\02_Sheets\G001 KEY PLAN.dwg

RAMSEY COUNTY PARKS

MNDOT MAINTENANCE FACILITY

SHEET C203

SHEET C200
SHEET C300

SHEET C201
SHEET C301

SHEET C202
SHEET C303

COUNTY ROAD 1

FAIRVIEW
AVE

FUTURE CL

TCAAP TRAILHEAD
ACCESS ROAD

AHATS SERVICE ROAD

SHEET C302

AHATS FACILITY

LEGEND

- — — — — PROPERTY LINE
- - - - - CONSTRUCTION LIMITS
■ PARCEL C

0 25 50 100
SCALE IN FEET



ALL CONTRACTORS AND SUBCONTRACTORS
SHALL VERIFY ALL DIMENSIONS BY
MEASUREMENT AT THE BUILDING AND/OR SITE

0 1
BAR IS ONE INCH ON ORIGINAL DRAWING. IF NOT ONE INCH
ON THIS DRAWING ADJUST SCALES ACCORDINGLY.

KEY PLAN

NO.	DATE	BY	DESCRIPTION OF REVISIONS
1	8-22-19	AMK	BIDDING DOCUMENTS

DESIGNED	AMK
DRAWN	LTW
CHECKED	BDP

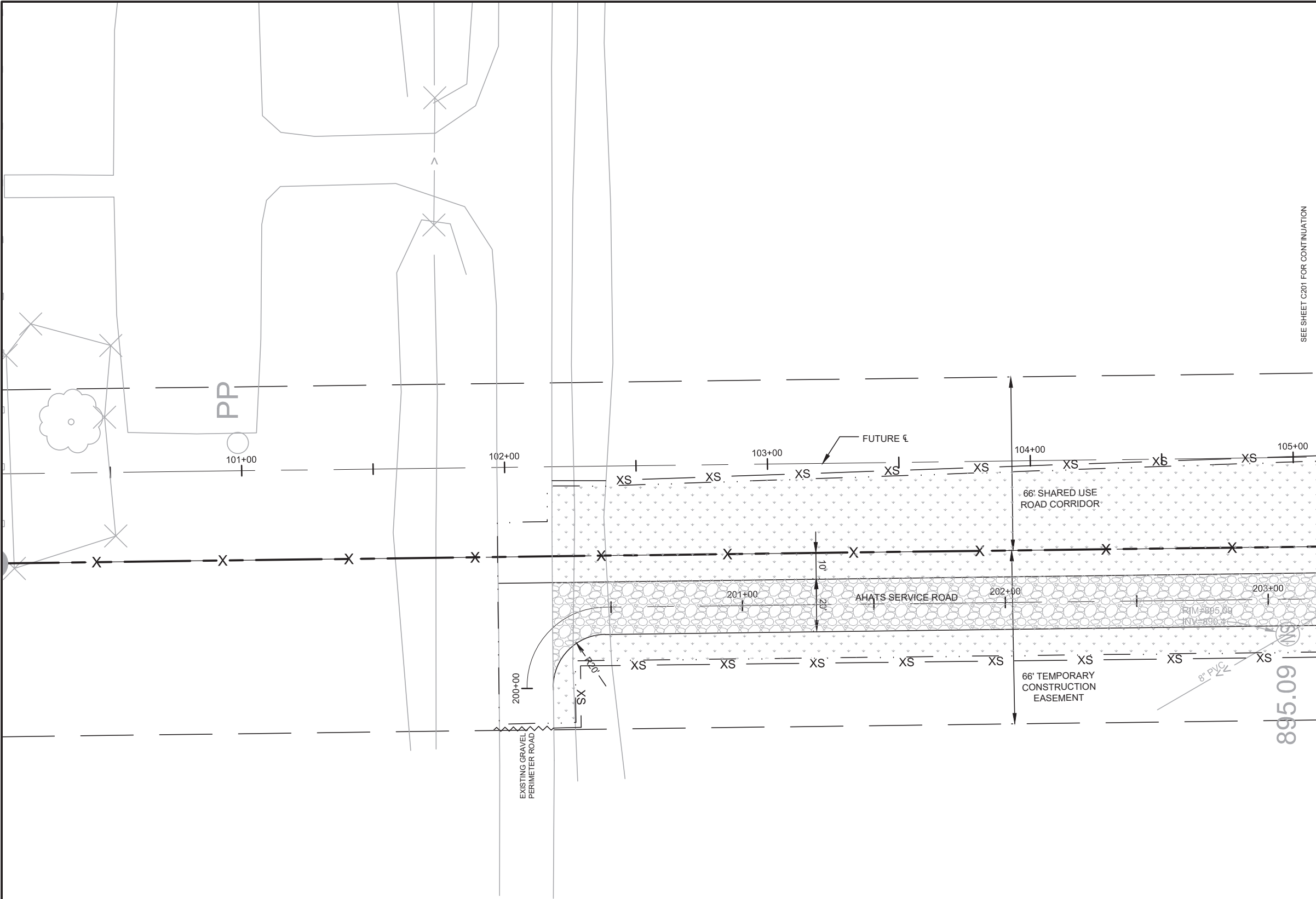
I HEREBY CERTIFY THAT THIS PLAN, SPECIFICATION, OR REPORT WAS
PREPARED BY ME OR UNDER MY DIRECT SUPERVISION AND THAT I AM A
DULY LICENSED ENGINEER UNDER THE LAWS OF THE STATE OF
MINNESOTA.
SIGNATURE: *Brent D. Paulsen* DATE: 8-22-19
PRINTED NAME: BRENT D. PAULSEN LIC. NO.: 26880



444 Cedar Street, Suite 1500
Saint Paul, MN 55101
651.292.4400
tkda.com

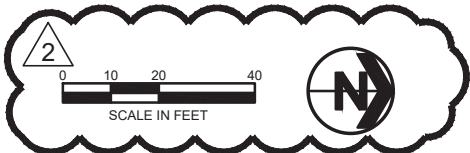
PROJ. NO.
17452.003
DRAWING NO.
G001

PLOT DATE: Sep 18, 2019 - 12:11pm
FILENAME: \\cds01.tkda.com\projects\h-z\RamseyCty\17452003\04_Production\01_CAD\02_Sheets\C200 SITE PLAN.dwg

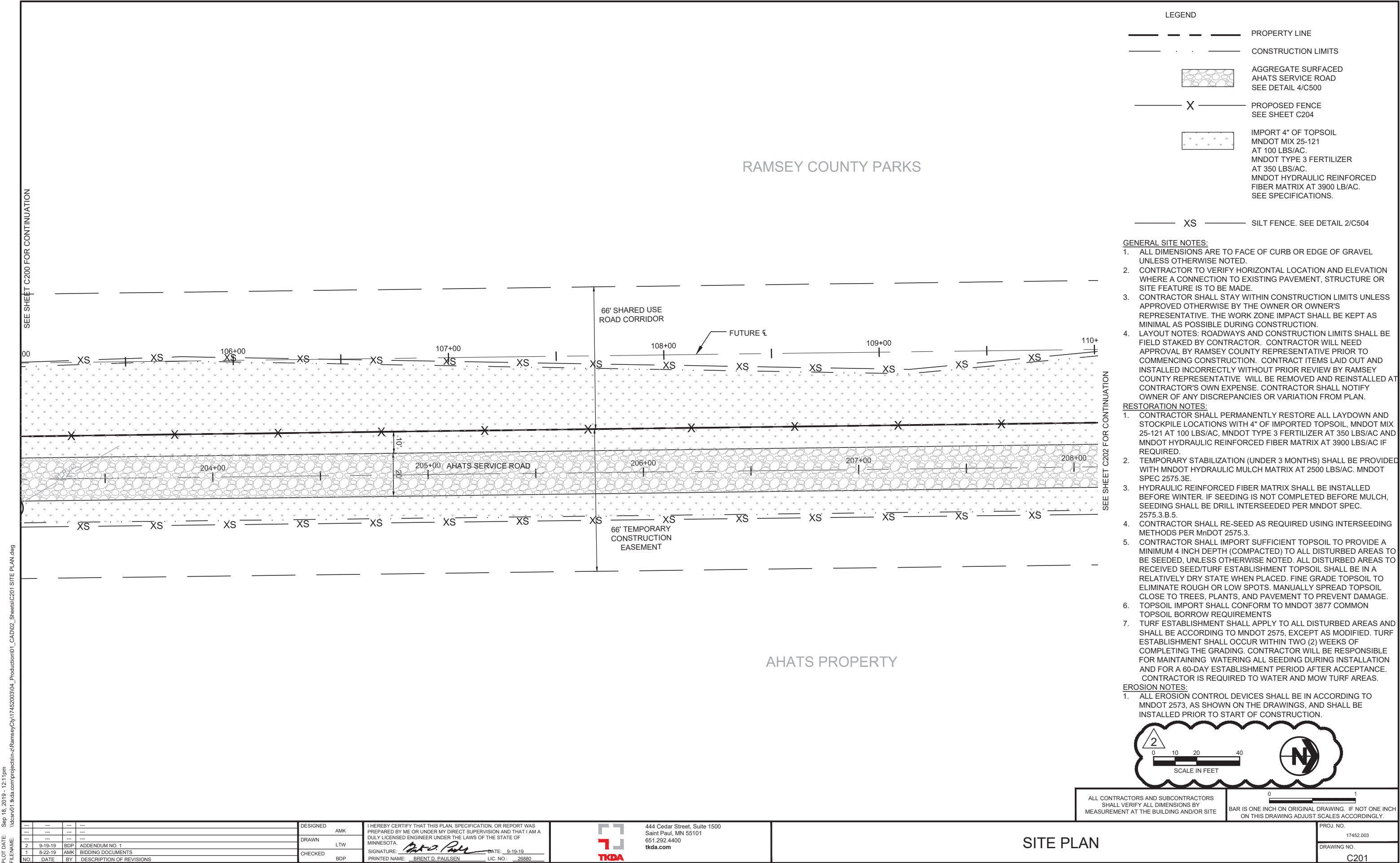


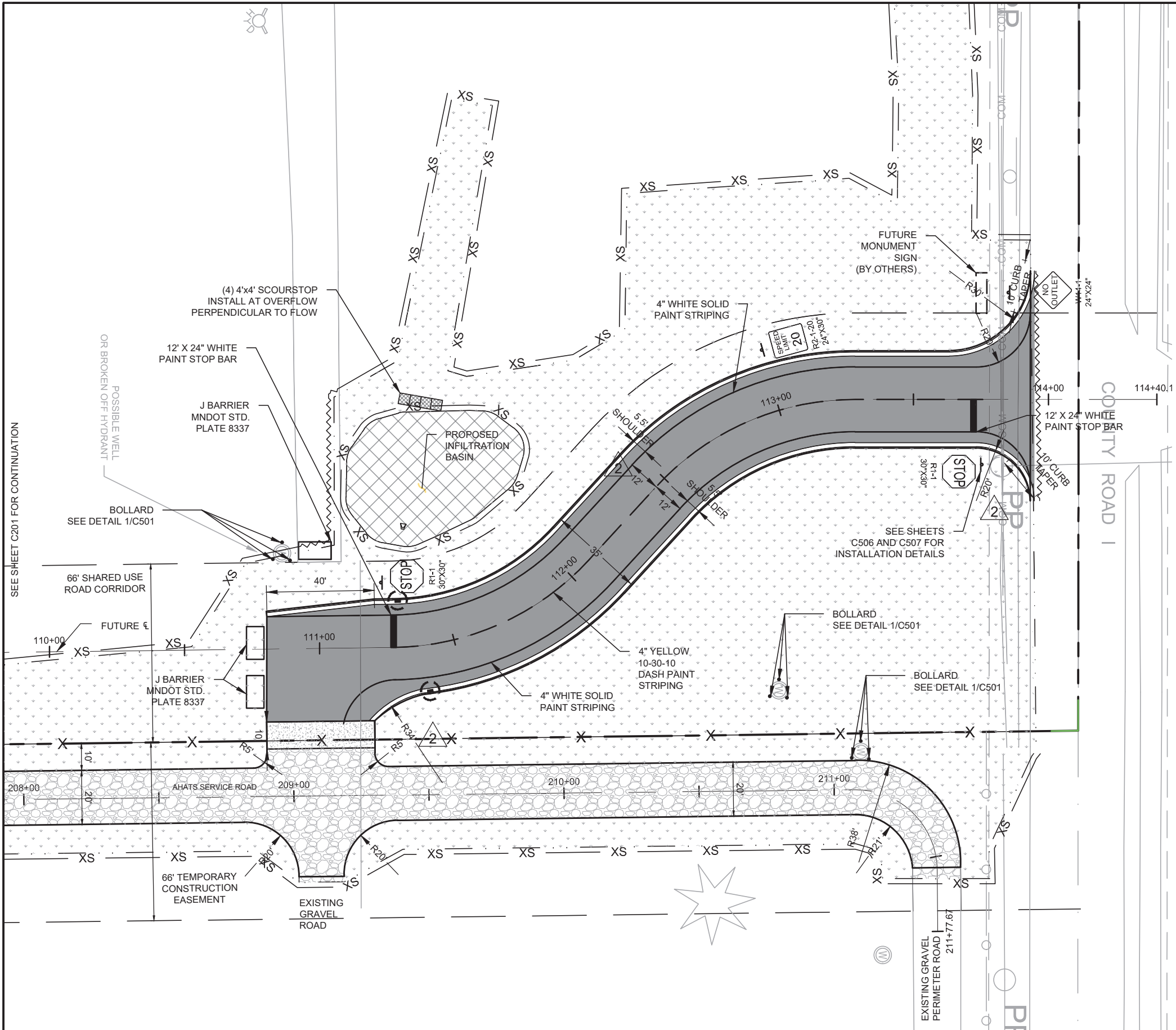
- LEGEND
- PROPERTY LINE
 - CONSTRUCTION LIMITS
 - AGGREGATE SURFACED AHATS SERVICE ROAD SEE DETAIL 4/C500
 - PROPOSED FENCE SEE SHEET C204
 - IMPORT 4" OF TOPSOIL MNDOT MIX 25-121 AT 100 LBS/AC. MNDOT TYPE 3 FERTILIZER AT 350 LBS/AC. MNDOT HYDRAULIC REINFORCED FIBER MATRIX AT 3900 LB/AC. SEE SPECIFICATIONS
 - XS SILT FENCE. SEE DETAIL 2/C504
 - ROCK FILTER LOG. SEE DETAIL 1/C504
- GENERAL SITE NOTES:
- ALL DIMENSIONS ARE TO FACE OF CURB OR EDGE OF GRAVEL UNLESS OTHERWISE NOTED.
 - CONTRACTOR TO VERIFY HORIZONTAL LOCATION AND ELEVATION WHERE A CONNECTION TO EXISTING PAVEMENT, STRUCTURE OR SITE FEATURE IS TO BE MADE.
 - CONTRACTOR SHALL STAY WITHIN CONSTRUCTION LIMITS UNLESS APPROVED OTHERWISE BY THE OWNER OR OWNER'S REPRESENTATIVE. THE WORK ZONE IMPACT SHALL BE KEPT AS MINIMAL AS POSSIBLE DURING CONSTRUCTION.
 - LAYOUT NOTES: ROADWAYS AND CONSTRUCTION LIMITS SHALL BE FIELD STAKED BY CONTRACTOR. CONTRACTOR WILL NEED APPROVAL BY RAMSEY COUNTY REPRESENTATIVE PRIOR TO COMMENCING CONSTRUCTION. CONTRACT ITEMS LAID OUT AND INSTALLED INCORRECTLY WITHOUT PRIOR REVIEW BY RAMSEY COUNTY REPRESENTATIVE WILL BE REMOVED AND REINSTALLED AT CONTRACTOR'S OWN EXPENSE. CONTRACTOR SHALL NOTIFY OWNER OF ANY DISCREPANCIES OR VARIATION FROM PLAN.
- RESTORATION NOTES:
- CONTRACTOR SHALL PERMANENTLY RESTORE ALL LAYDOWN AND STOCKPILE LOCATIONS WITH 4" OF IMPORTED TOPSOIL, MNDOT MIX 25-121 AT 100 LBS/AC, MNDOT TYPE 3 FERTILIZER AT 350 LBS/AC AND MNDOT HYDRAULIC REINFORCED FIBER MATRIX AT 3900 LBS/AC IF REQUIRED.
 - TEMPORARY STABILIZATION (UNDER 3 MONTHS) SHALL BE PROVIDED WITH MNDOT HYDRAULIC MULCH MATRIX AT 2500 LBS/AC. MNDOT SPEC 2575.3E.
 - HYDRAULIC REINFORCED FIBER MATRIX SHALL BE INSTALLED BEFORE WINTER. IF SEEDING IS NOT COMPLETED BEFORE MULCH, SEEDING SHALL BE DRILL INTERSEEDED PER MNDOT SPEC. 2575.3.B.5.
 - CONTRACTOR SHALL RE-SEED AS REQUIRED USING INTERSEEDING METHODS PER MndOT 2575.3.
 - CONTRACTOR SHALL IMPORT SUFFICIENT TOPSOIL TO PROVIDE A MINIMUM 4 INCH DEPTH (COMPACTED) TO ALL DISTURBED AREAS TO BE SEED. UNLESS OTHERWISE NOTED. ALL DISTURBED AREAS TO RECEIVED SEED/TURF ESTABLISHMENT TOPSOIL SHALL BE IN A RELATIVELY DRY STATE WHEN PLACED. FINE GRADE TOPSOIL TO ELIMINATE ROUGH OR LOW SPOTS. MANUALLY SPREAD TOPSOIL CLOSE TO TREES, PLANTS, AND PAVEMENT TO PREVENT DAMAGE.
 - TOPSOIL IMPORT SHALL CONFORM TO MNDOT 3877 COMMON TOPSOIL BORROW REQUIREMENTS
 - TURF ESTABLISHMENT SHALL APPLY TO ALL DISTURBED AREAS AND SHALL BE ACCORDING TO MNDOT 2575, EXCEPT AS MODIFIED. TURF ESTABLISHMENT SHALL OCCUR WITHIN TWO (2) WEEKS OF COMPLETING THE GRADING. CONTRACTOR WILL BE RESPONSIBLE FOR MAINTAINING WATERING ALL SEEDING DURING INSTALLATION AND FOR A 60-DAY ESTABLISHMENT PERIOD AFTER ACCEPTANCE. CONTRACTOR IS REQUIRED TO WATER AND MOW TURF AREAS.
- EROSION NOTES:
- ALL EROSION CONTROL DEVICES SHALL BE IN ACCORDING TO MNDOT 2573, AS SHOWN ON THE DRAWINGS, AND SHALL BE INSTALLED PRIOR TO START OF CONSTRUCTION.

SEE SHEET C201 FOR CONTINUATION



2	9-19-19	BDP	ADDENDUM NO. 1
1	8-22-19	AMK	BIDDING DOCUMENTS
NO.	DATE	BY	DESCRIPTION OF REVISIONS

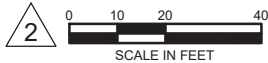




LEGEND

- CONSTRUCTION LIMITS
- PROPERTY LINE
- SURMOUNTABLE CURB & GUTTER, TYPE D418 SEE DETAIL 1/C500
- PROPOSED SIGN SEE DETAIL C506 AND C507 FOR POST
- BITUMINOUS PAVEMENT SEE DETAIL 2/C500
- AGGREGATE SURFACED AHATS SERVICE ROAD SEE DETAIL 4/C500
- CONCRETE PAVEMENT SEE DETAIL 3/C500
- PROTECT MONITORING WELL
- PROPOSED FENCE, SEE SHEET C204
- IMPORT 4" OF TOPSOIL MNDOT MIX 25-121 AT 100 LBS/AC. MNDOT TYPE 3 FERTILIZER AT 350 LBS/AC. MNDOT HYDRAULIC REINFORCED FIBER MATRIX AT 3900 LBS/AC. SEE SPECIFICATIONS
- INFILTRATION AREA MNDOT NATIVE SEED MIX 33-261 AT 35 LBS/AC. MNDOT TYPE 1 FERTILIZER AT 300 LBS/AC. MNDOT HYDRAULIC REINFORCED FIBER MATRIX AT 3900 LBS/AC.
- SILT FENCE. SEE DETAIL 2/C504
- ROCK FILTER LOG. SEE DETAIL 1/C504
- INLET PROTECTION. SEE DETAIL 3/C504

- GENERAL SITE NOTES:**
- ALL DIMENSIONS ARE TO FACE OF CURB OR EDGE OF GRAVEL UNLESS OTHERWISE NOTED.
 - CONTRACTOR TO VERIFY HORIZONTAL LOCATION AND ELEVATION WHERE A CONNECTION TO EXISTING PAVEMENT, STRUCTURE OR SITE FEATURE IS TO BE MADE.
 - CONTRACTOR SHALL STAY WITHIN CONSTRUCTION LIMITS UNLESS APPROVED OTHERWISE BY THE OWNER OR OWNER'S REPRESENTATIVE. THE WORK ZONE IMPACT SHALL BE KEPT AS MINIMAL AS POSSIBLE DURING CONSTRUCTION.
 - LAYOUT NOTES: ROADWAYS AND CONSTRUCTION LIMITS SHALL BE FIELD STAKED BY CONTRACTOR. CONTRACTOR WILL NEED APPROVAL BY RAMSEY COUNTY REPRESENTATIVE PRIOR TO COMMENCING CONSTRUCTION. CONTRACT ITEMS LAID OUT AND INSTALLED INCORRECTLY WITHOUT PRIOR REVIEW BY RAMSEY COUNTY REPRESENTATIVE WILL BE REMOVED AND REINSTALLED AT CONTRACTOR'S OWN EXPENSE. CONTRACTOR SHALL NOTIFY OWNER OF ANY DISCREPANCIES OR VARIATION FROM PLAN.
 - PAINT STRIPING SHALL CONFORM TO PAVEMENT MARKINGS IN SPECIFICATIONS.
 - CONTRACTOR SHALL PREPARE A TRAFFIC CONTROL PLAN AND SUBMIT TO RAMSEY COUNTY FOR REVIEW. ALL TRAFFIC CONTROL DEVICES AND SIGNING SHALL CONFORM TO AND BE PLACED IN ACCORDANCE WITH THE LATEST EDITION OF "MINNESOTA MANUAL ON UNIFORM TRAFFIC CONTROL DEVICES", INCLUDING "FIELD MANUAL FOR TEMPORARY TRAFFIC CONTROL ZONE LAYOUTS".
- RESTORATION NOTES:**
- CONTRACTOR SHALL PERMANENTLY RESTORE ALL LAYDOWN AND STOCKPILE LOCATIONS WITH 4" OF IMPORTED TOPSOIL, MNDOT MIX 25-121 AT 100 LBS/AC, MNDOT TYPE 3 FERTILIZER AT 350 LBS/AC AND MNDOT HYDRAULIC REINFORCED FIBER MATRIX AT 3900 LBS/AC IF REQUIRED.
 - TEMPORARY STABILIZATION (UNDER 3 MONTHS) SHALL BE PROVIDED WITH MNDOT HYDRAULIC MULCH MATRIX AT 2500 LBS/AC. MNDOT SPEC 2575.3E.
 - HYDRAULIC REINFORCED FIBER MATRIX SHALL BE INSTALLED BEFORE WINTER. IF SEEDING IS NOT COMPLETED BEFORE MULCH, SEEDING SHALL BE DRILL INTERSEEDED PER MNDOT SPEC. 2575.3.B.5.
 - CONTRACTOR SHALL RE-SEED AS REQUIRED USING INTERSEEDING METHODS PER MNDOT 2575.3.
 - CONTRACTOR SHALL IMPORT SUFFICIENT TOPSOIL TO PROVIDE A MINIMUM 4 INCH DEPTH (COMPACTED) TO ALL DISTURBED AREAS TO BE SEEDED, UNLESS OTHERWISE NOTED. ALL DISTURBED AREAS TO RECEIVED SEED/TURF ESTABLISHMENT TOPSOIL SHALL BE IN A RELATIVELY DRY STATE WHEN PLACED. FINE GRADE TOPSOIL TO ELIMINATE ROUGH OR LOW SPOTS. MANUALLY SPREAD TOPSOIL CLOSE TO TREES, PLANTS, AND PAVEMENT TO PREVENT DAMAGE.
 - TOPSOIL IMPORT SHALL CONFORM TO MNDOT 3877 COMMON TOPSOIL BORROW REQUIREMENTS
 - TURF ESTABLISHMENT SHALL APPLY TO ALL DISTURBED AREAS AND SHALL BE ACCORDING TO MNDOT 2575, EXCEPT AS MODIFIED. TURF ESTABLISHMENT SHALL OCCUR WITHIN TWO (2) WEEKS OF COMPLETING THE GRADING. CONTRACTOR WILL BE RESPONSIBLE FOR MAINTAINING WATERING ALL SEEDING DURING INSTALLATION AND FOR A 60-DAY ESTABLISHMENT PERIOD AFTER ACCEPTANCE. CONTRACTOR IS REQUIRED TO WATER AND MOW TURF AREAS.
- EROSION NOTES:**
- ALL EROSION CONTROL DEVICES SHALL BE IN ACCORDANCE WITH TO MNDOT 2573, AS SHOWN ON THE DRAWINGS, AND SHALL BE INSTALLED PRIOR TO START OF CONSTRUCTION.



ALL CONTRACTORS AND SUBCONTRACTORS SHALL VERIFY ALL DIMENSIONS BY MEASUREMENT AT THE BUILDING AND/OR SITE

BAR IS ONE INCH ON ORIGINAL DRAWING. IF NOT ONE INCH ON THIS DRAWING ADJUST SCALES ACCORDINGLY.

SITE PLAN

NO.	DATE	BY	DESCRIPTION OF REVISIONS
1	9-19-19	BDP	ADDENDUM NO.1
2	8-22-19	AMK	BIDDING DOCUMENTS

DESIGNED AMK
DRAWN LTW
CHECKED BDP

I HEREBY CERTIFY THAT THIS PLAN, SPECIFICATION, OR REPORT WAS PREPARED BY ME OR UNDER MY DIRECT SUPERVISION AND THAT I AM A DULY LICENSED ENGINEER UNDER THE LAWS OF THE STATE OF MINNESOTA.

SIGNATURE: *Brent D. Paulsen* DATE: 9-19-19
PRINTED NAME: BRENT D. PAULSEN LIC. NO.: 26880



444 Cedar Street, Suite 1500
Saint Paul, MN 55101
651.292.4400
tkda.com

PROJ. NO. 17452.003
DRAWING NO. C202