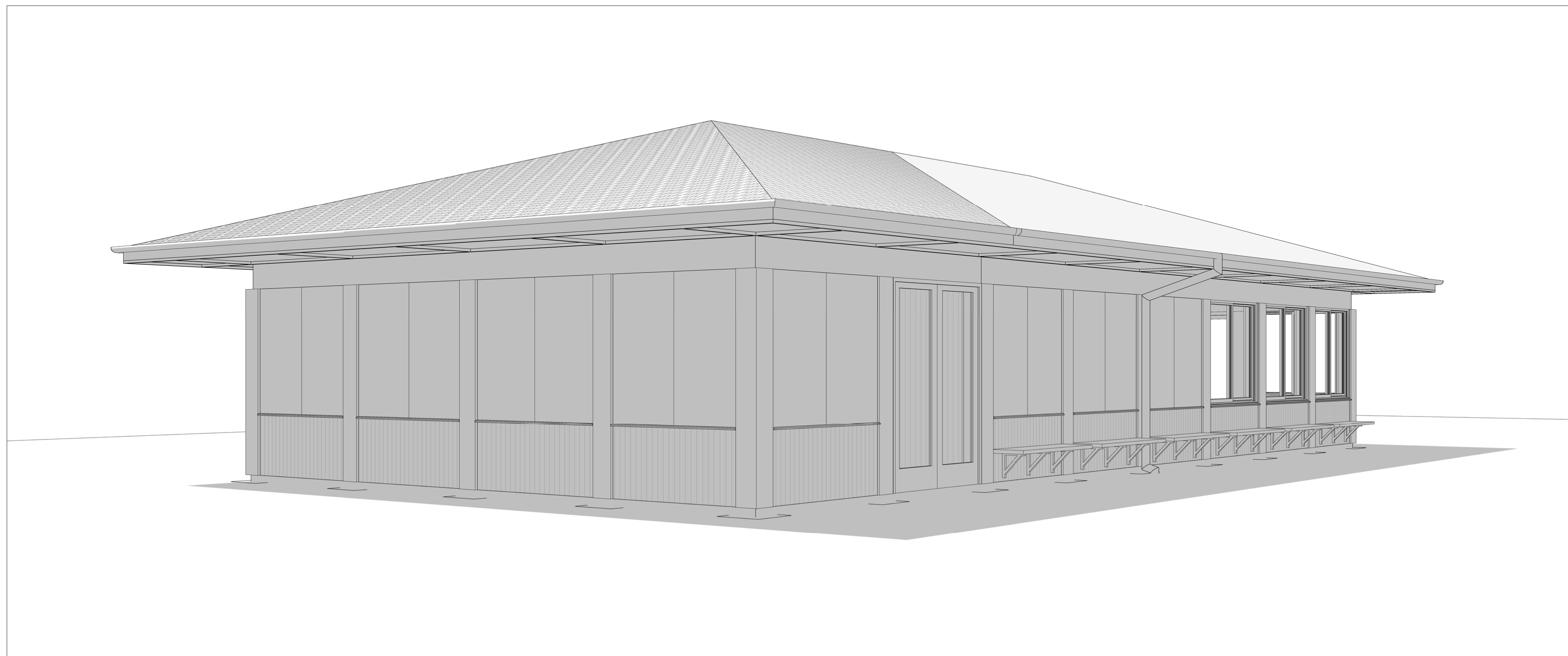




1 Southeast Perspective



2 Northwest Perspective

CONTACT INFORMATION:

B. Gus Blumer, Landscape Architect  
2015 Van Dyke Street  
Maplewood, MN 55109  
brett.blumer@co.ramsey.mn.us  
651.748.2500



1229 Tyler Street NE, Studio 202  
Minneapolis, MN 55413  
612.870.4081

I hereby certify that this plan, specification or report was prepared by me or under my direct supervision and that I am a duly Licensed Architect under the laws of the State of Minnesota.

Registration: Architect  
State: Minnesota  
Number: 11374  
Signature: F. John Barbour

NO. DATE DESCRIPTION

1 4/14/20 BID DOCUMENTS

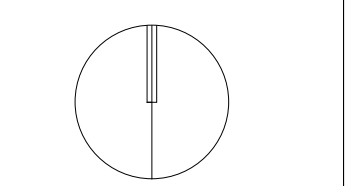
DESIGN PHASE:

BID DOCUMENTS

**TAMARACK NATURE CENTER - GARDEN HOUSE REMODEL**  
RAMSEY COUNTY PARKS AND RECREATION DEPARTMENT  
TAMARACK NATURE CENTER

DATE: 03/20/20

DESIGNED BY: Designer  
DRAWN BY: JH  
CHECKED BY: BH



TITLE

EXTERIOR PERSPECTIVES

**A2.3**

SHEET - - OF - -