



*Rush  
Line*

B R T

May 31, 2018

# POLICY ADVISORY COMMITTEE

## ENVIRONMENTAL ANALYSIS PHASE



## Agenda

1. Welcome and introductions.
2. Overview of project activities.
3. Community Advisory Committee update.
  - **Action:** Approve Community Advisory Committee member appointments as recommended by Policy Advisory Committee sub-committee.
4. Public engagement update.
5. Review refined purpose and need.
6. Project walk through.
7. Public comment.
8. Next Policy Advisory Committee meeting.



## **Recap of March Policy Advisory Committee Meeting**

- Elected chair (Mayor Slawik) and vice-chair (Mayor Emerson).
- Provided overview of project and schedule.
- Discussed environmental analysis phase key tasks.
- Discussed approach and timeframe for station area planning working groups.
  - Received direction from Policy Advisory Committee to tailor working group process for each city.



# Environmental Analysis Phase Schedule



B R T





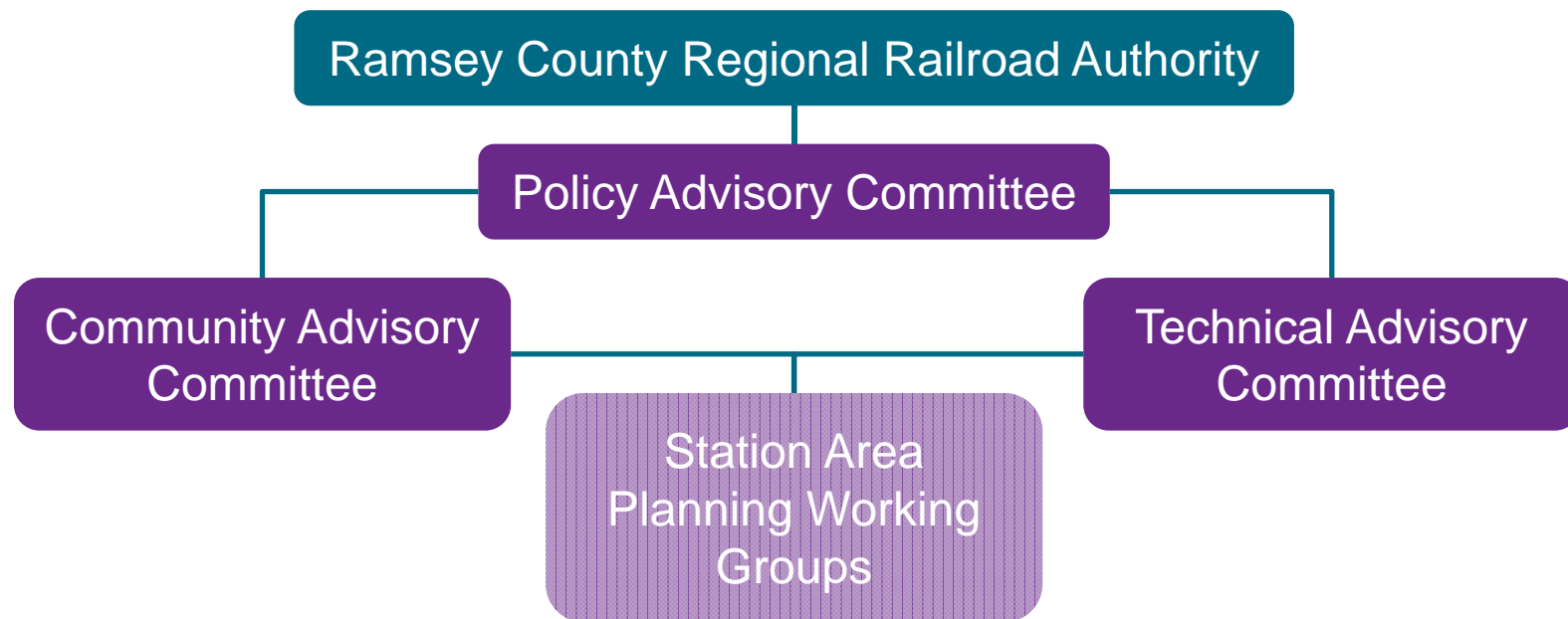
# Locally Preferred Alternative

- Dedicated guideway BRT.
- Phalen Boulevard and Robert Street into downtown Saint Paul.
- Ramsey County Regional Railroad right-of-way (shared with Bruce Vento Trail).
- Highway 61 north of I-694 into White Bear Lake.
- Explore future connections to the north and other system improvements.





# Environmental Analysis Phase Advisory Committees and Working Groups





## Overview of Project Activities

- Station area planning work.
- Public engagement.
- Agency coordination.
- Technical work.

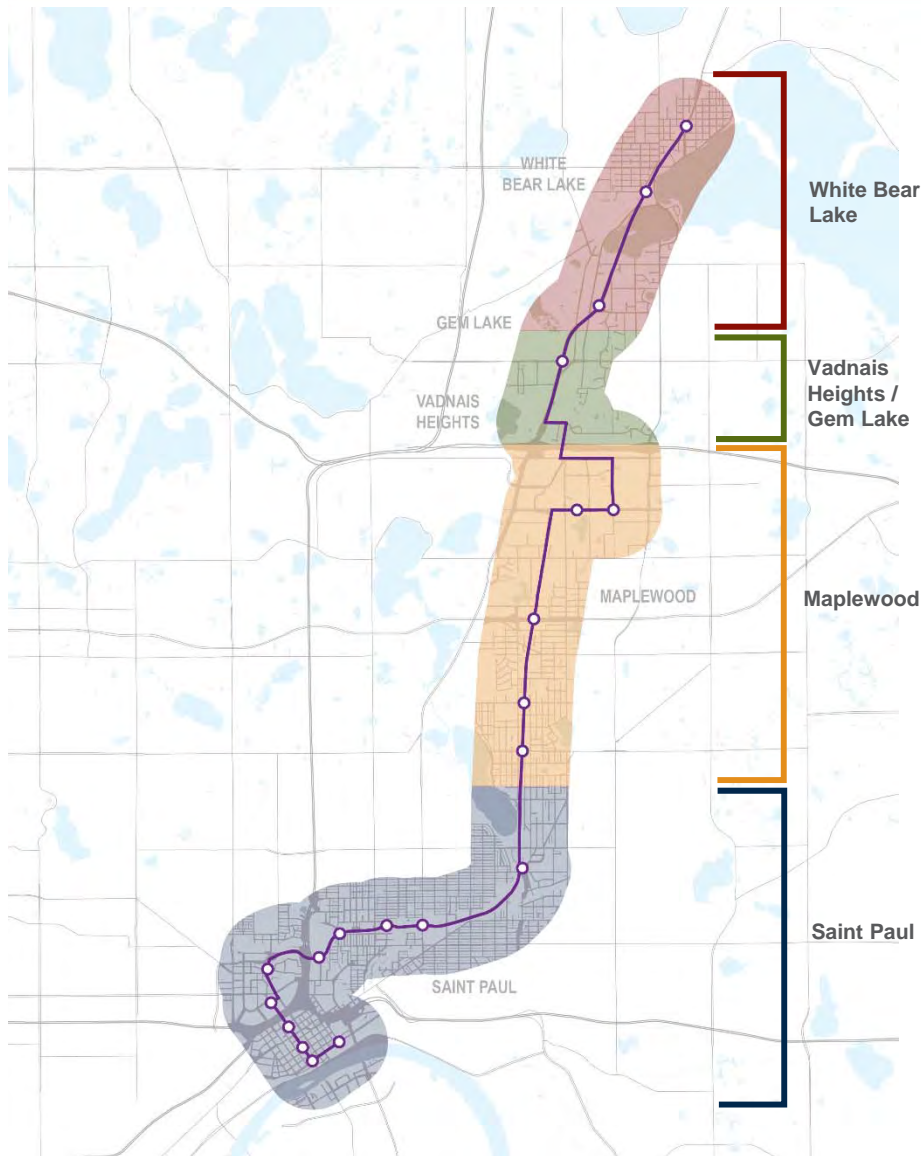


## Station Area Planning Process

- Generally a three stage process.
- 1st stage:
  - Identify opportunities and constraints for potential station platform and park-and-ride locations.
- 2nd stage:
  - Identify preferred station platform and park-and-ride locations, station access and opportunities for transit-oriented development.
- 3rd stage:
  - Develop station area vision and concept plans.



# Station Area Planning Working Groups



White Bear Lake  
Marina Triangle  
Cedar Avenue

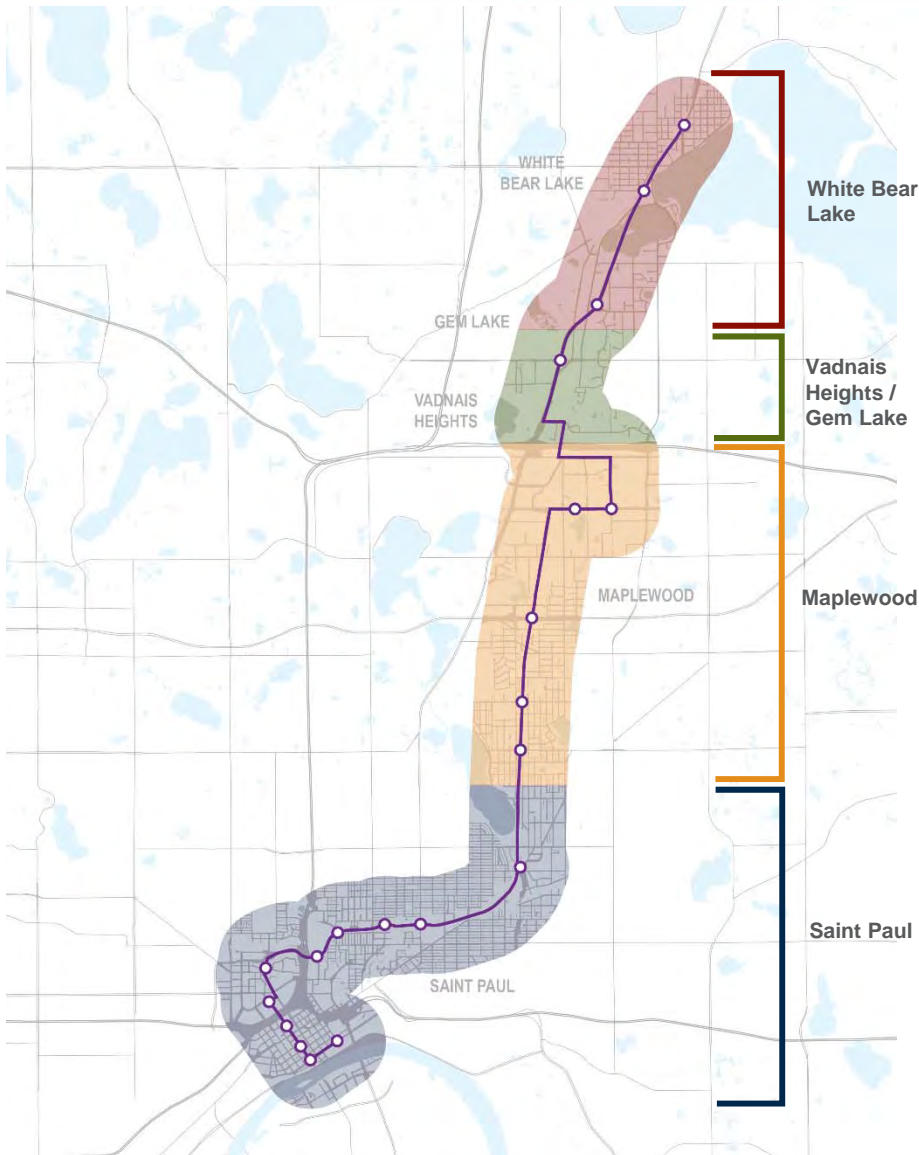
County Road E

Maplewood Mall  
St. John's Hospital  
Highway 36/English Street  
Frost Avenue  
Larpenteur Avenue

Phalen Village  
Arcade Street  
Payne Avenue  
Cayuga Street  
Olive Street  
Mt. Airy  
Regions/Green Line  
9th/10th Street  
5th/6th Street  
Kellogg Boulevard  
Union Depot



# Station Area Planning Working Groups



**White Bear Lake**  
Downtown White Bear Lake  
Marina Triangle  
Cedar Avenue

**Vadnais Heights / Gem Lake**  
County Road E

**Maplewood**  
Maplewood Mall  
St. John's Hospital  
Highway 36/English Street  
Frost Avenue  
Larpenteur Avenue

**Saint Paul**  
Phalen Village  
Arcade Street  
Payne Avenue  
Cayuga Street  
Olive Street  
Mt. Airy  
Regions/Green Line  
9th/10th Street  
5th/6th Street  
Kellogg Boulevard  
Union Depot



## April Station Area Planning Activities

- White Bear Lake stakeholder interviews.
- White Bear Lake working group meeting.
- County Road E stakeholder meeting.
- Saint Paul station area planning meeting with city staff.
- Maplewood station area planning meeting with city staff.



## May Station Area Planning Activities

- County Road E working group.
- Maplewood working group.
  - Larpenteur Avenue station.
  - Frost Avenue station.
  - Highway 36/English Street station.
- Saint Paul working group.
  - Phalen Village station.



# Community Advisory Committee Update

- 63 applications were received.
- A sub-committee of the Policy Advisory Committee was established and met on May 9.
- Community Advisory Committee will be 23 people.
- Members selected to reflect geography and diversity of people along route.
  - Potential for additional members to address gaps that may emerge.



**April 12, 2018**

**Contact**  
 Email: [info@rushline.org](mailto:info@rushline.org)  
 Website: [rushline.org](http://rushline.org)

**Find us on Facebook!**  
**Follow us on Twitter!**

**Presentation at Capitol River Council**  
 Members of the project team met with the [Capitol River Council](#) development review committee on April 10. An update on the environmental analysis phase of the Rush Line BRT Project was provided. Committee members expressed interest in the possibility for all day transit service within the corridor which envisions connecting people to jobs and medical institutions.

The committee members volunteered share information about the Community Advisory Committee opportunity.

**Get Involved!**



**Apply today: application review begins April 20**

Do you have a strong interest in the [Rush Line BRT Project](#)? [Applications to join the Community Advisory Committee are being accepted now.](#) Review of the applications will begin on Friday, April 20.

The Community Advisory Committee will provide a community voice during the environmental analysis phase of the project. The committee will advise project decision makers on key questions, such as:

- Where should stations be placed to best serve transit users and the surrounding neighborhoods?
- What kind of development and pedestrian, bicycle and transit connections do we want to see at and near stations?
- How should the project team engage the diverse communities living, working and playing along the Rush Line BRT route?
- How do we make sure that all communities along the route benefit from this investment?



## Community Advisory Committee Member Appointments

- Recommended action:
  - Approve Community Advisory Committee member appointments recommended by Policy Advisory Committee sub-committee.



## Draft Communications and Public Engagement Plan

- Overview of content:
  - Public engagement goals.
  - Public participation strategies.
  - Key project decisions and how public input will be used.
  - Description of decision-making committees and process.
  - Focus on engaging with underrepresented communities.
- Reviewed by Technical Advisory Committee.
- Will finalize after review by Policy Advisory Committee.



## Recent Engagement Activities

- April 29: Northeast Community Expo at White Bear Lake High School.
- May 4: Pop-up event in downtown White Bear Lake.
- May 5: Cinco de Mayo at Parque de Castillo in West Saint Paul; Train Day at Union Depot.
- May 7: Frogtown Neighborhood Association board meeting.
- May 12: Walk-and-engage at Phalen Village.
- May 18: Bike to Work Week event; Mt. Airy Homes Spring Event.



Gracias a todas las familias y personas que pasaron por nuestra mesa durante la celebración del Cinco de Mayo el sábado en Cesar Chavez. ¡Que bien salieron en las fotos dentro del bus Rush Line!

Thanks to everyone who stopped by our table last Saturday during the Cinco de Mayo celebration at Cesar Chavez. Great photos inside our little Rush Line bus!



Bilingual Facebook post after the Cinco de Mayo event.



## Recent and Upcoming Engagement Activities

- May 19: Walk-and-engage at Phalen Village and Mt. Airy.
- May 21: Johnson Senior High School leadership class.
- June 2: Ramsey-Washington Metro Watershed District WaterFest.
- June 19: Party in the Park at Berwood Park in Vadnais Heights.
- June 20: District Council 2 board meeting.
- June 26: Payne-Phalen Neighborhood Association monthly meeting.



Train Day at Union Depot.



## Input Themes

- Winter maintenance.
- Maplewood Mall is a popular destination for youth.
- Hmong Village is a regional destination; locals use the bus to get there.
- Hmong elders need assistance learning how to ride transit.
- Rush Line BRT represents an opportunity to explore new areas for Saint Paul residents.
- Connecting bus service is important in suburban communities.
- Walking conditions and safety around Mt. Airy present challenges to using local bus service or Rush Line BRT.



Johnson Senior High School leadership class.



## Refinement of Purpose and Need

- Minor changes from Pre-Project Development Study:
  - Summary of previous process.
  - Updated need statements (active voice).
  - Focus on *reliable, high-frequency* transit based on changing trends.
  - Notes where updated data is needed.
- Refinements have been reviewed by the Technical Advisory Committee.
- Comments from Policy Advisory Committee are welcome.

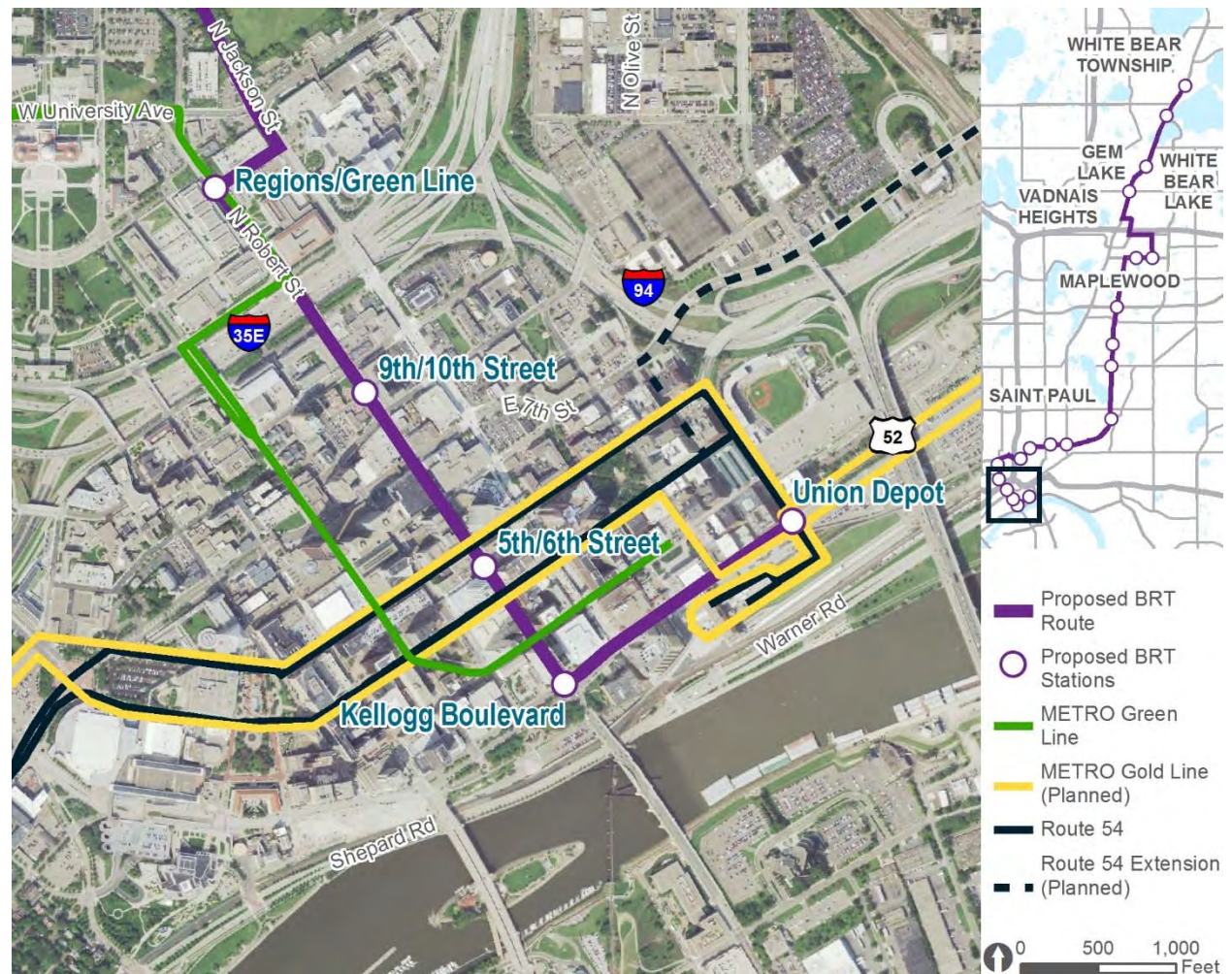


# Project Walk Through



B R T

- Reviewing and collaborating on downtown routing with Gold Line project office.
- Coordinating improvements on Robert Street with the Minnesota Department of Transportation.



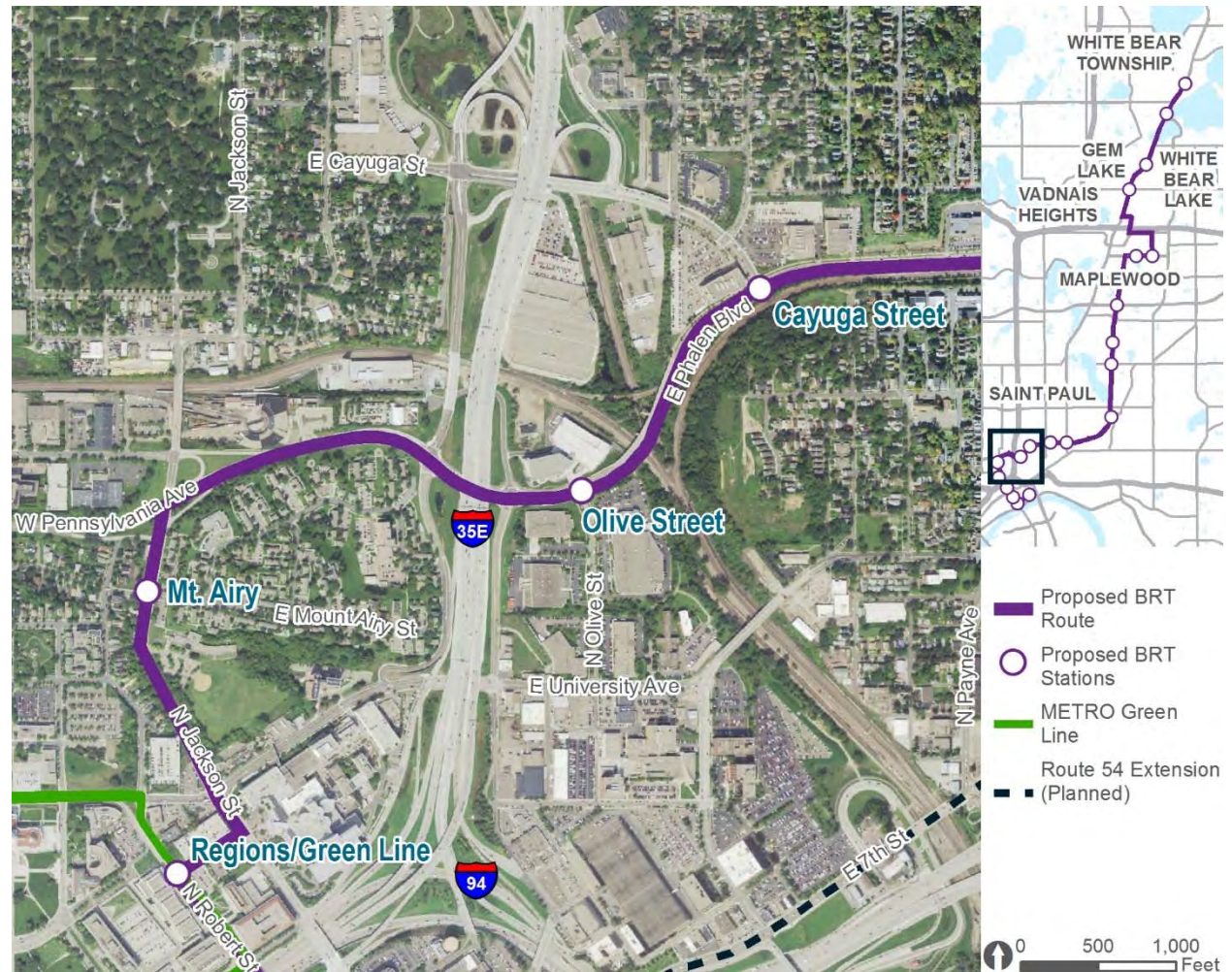


# Project Walk Through



B R T

- Evaluating Jackson Street design options and location of station platforms for Mt. Airy station in coordination with city of Saint Paul.
- Assessing route option on Robert Street to University Avenue.
- Assessing design options on Phalen Boulevard to minimize traffic impacts.



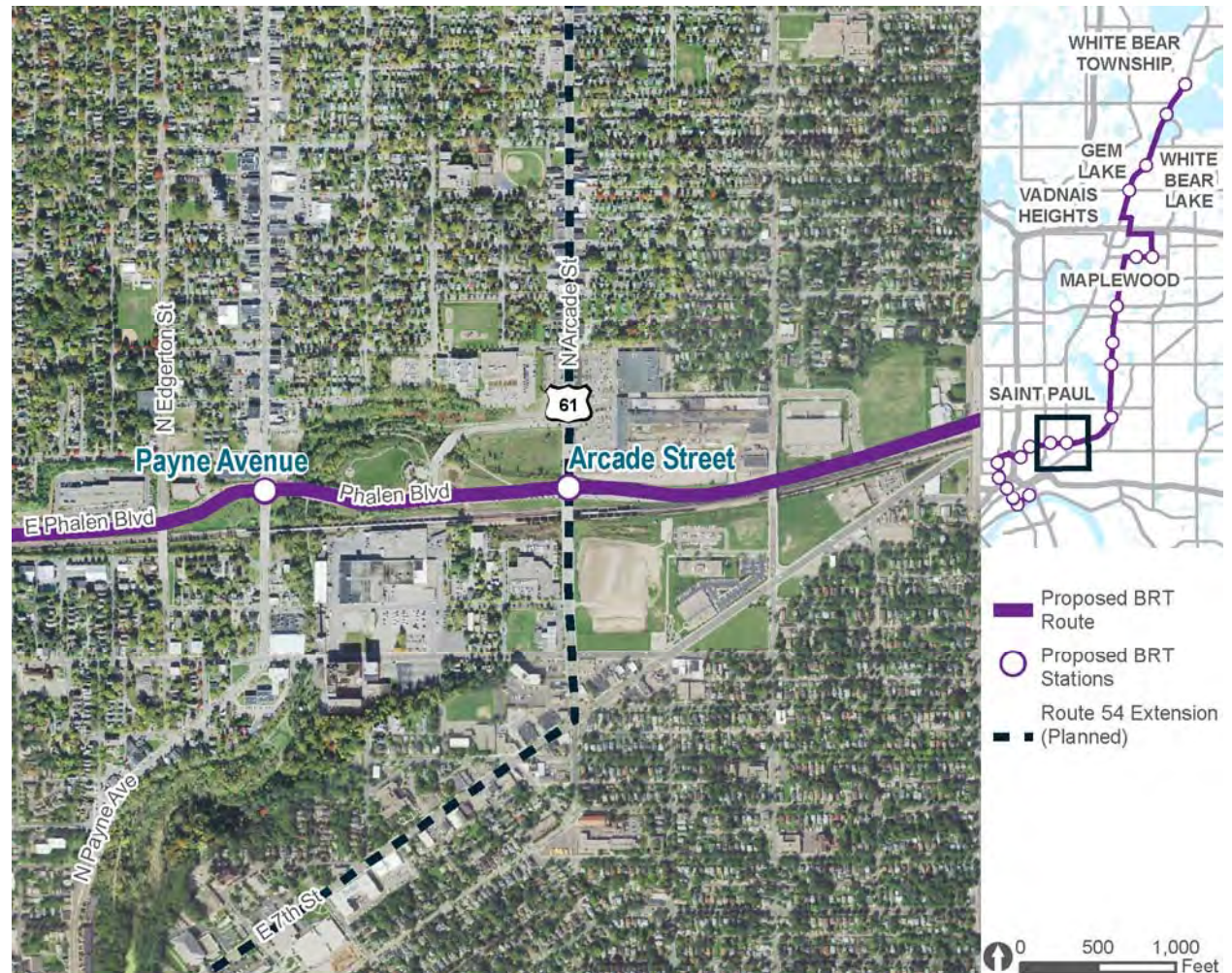


# Project Walk Through



B R T

- Assessing route options.
- Arcade Street station:
  - Evaluating station locations and configuration to enhance connectivity, mitigate traffic and address right-of-way constraints.



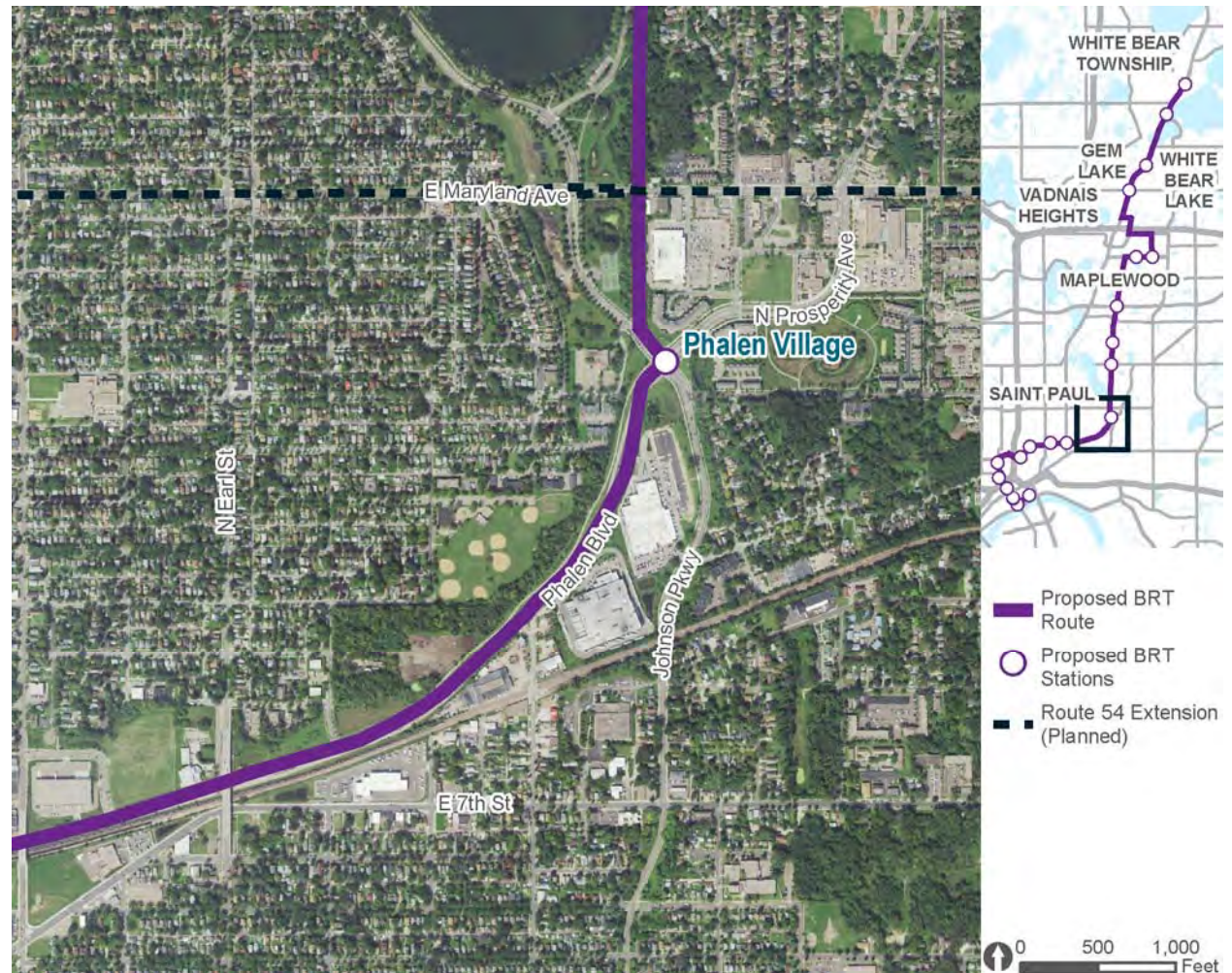


# Project Walk Through



B R T

- Evaluating location for Phalen Village station:
  - Neighborhood connections.
  - Existing transit service access.
  - Maximize transit-oriented development potential.



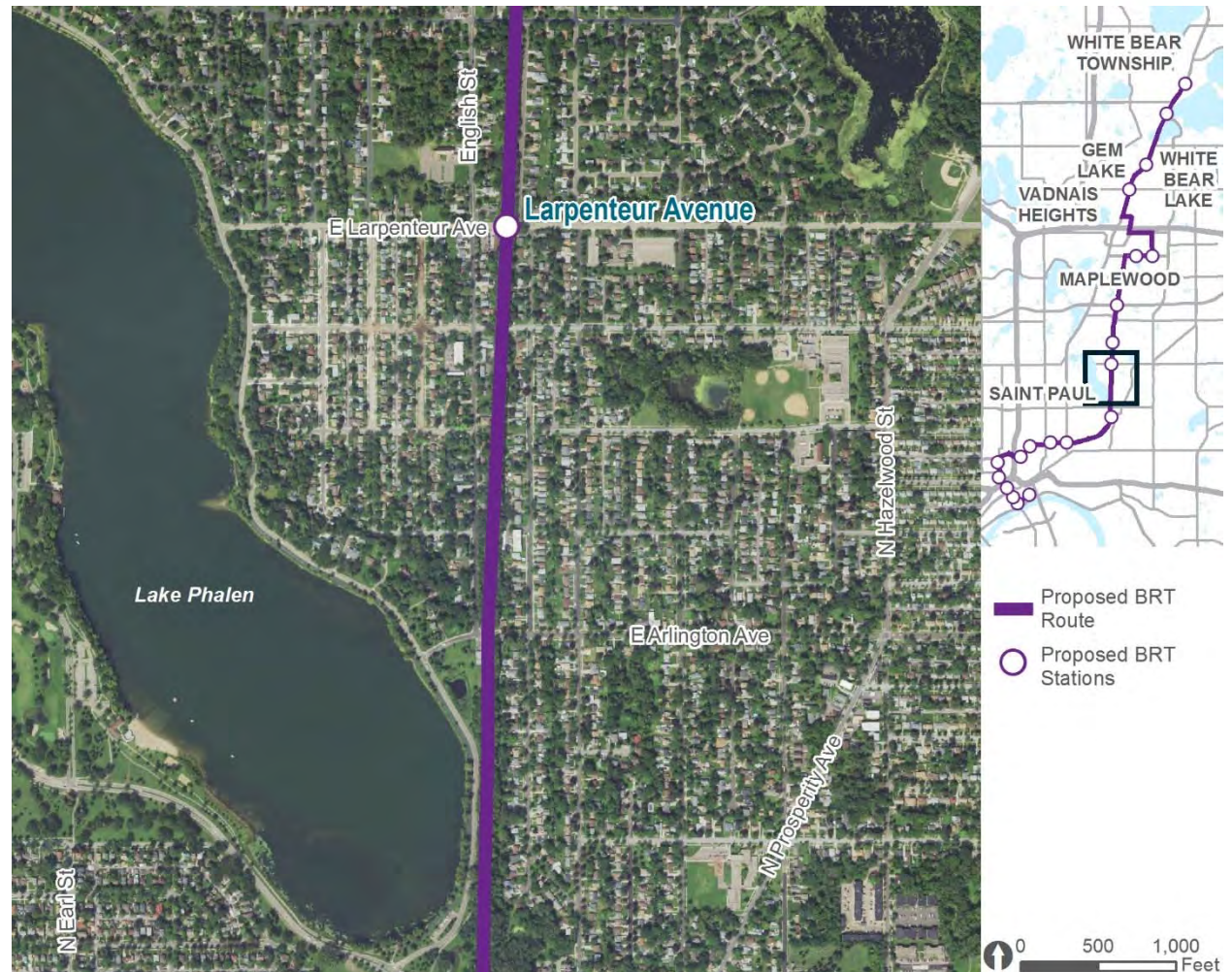


# Project Walk Through



B R T

- Ramsey County Regional Railroad Authority right-of-way:
  - Evaluating BRT guideway and trail configurations.

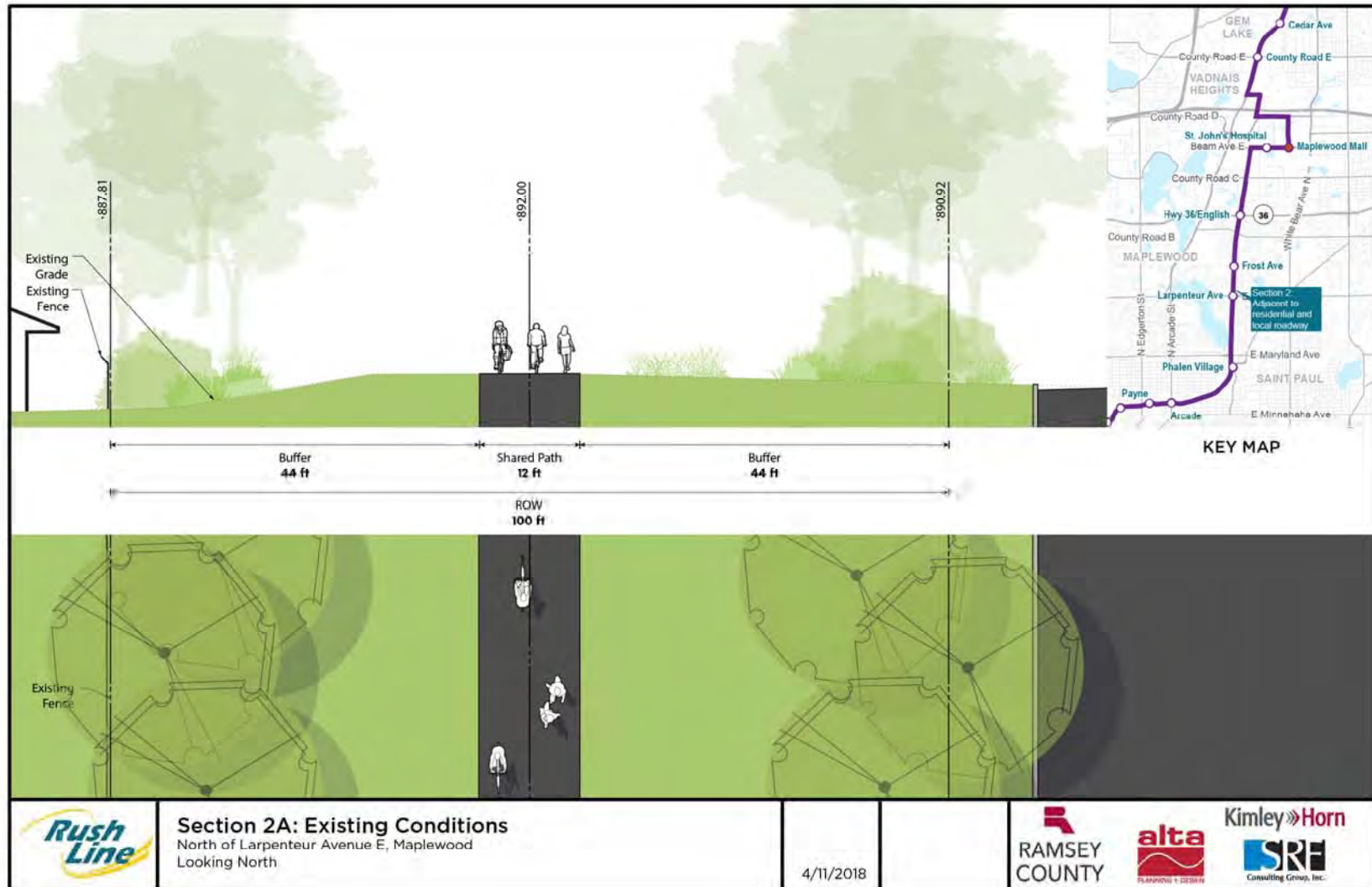




# Ramsey County Regional Railroad Authority Right-of-Way



B R T





# Ramsey County Regional Railroad Authority Right-of-Way



B R T



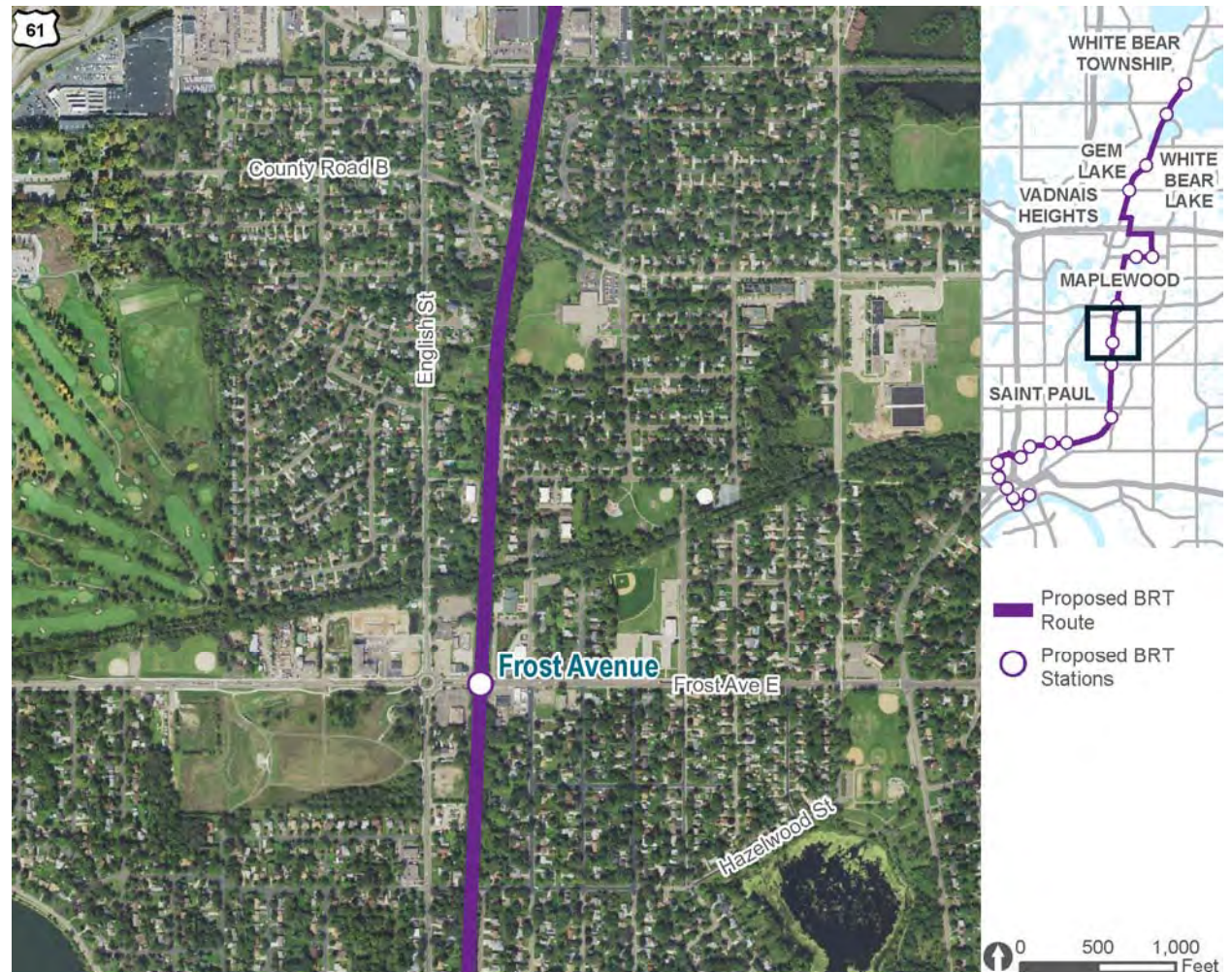


# Project Walk Through



B R T

- Ramsey County Regional Railroad Authority right-of-way:
  - Evaluating pedestrian and bicycle crossings.

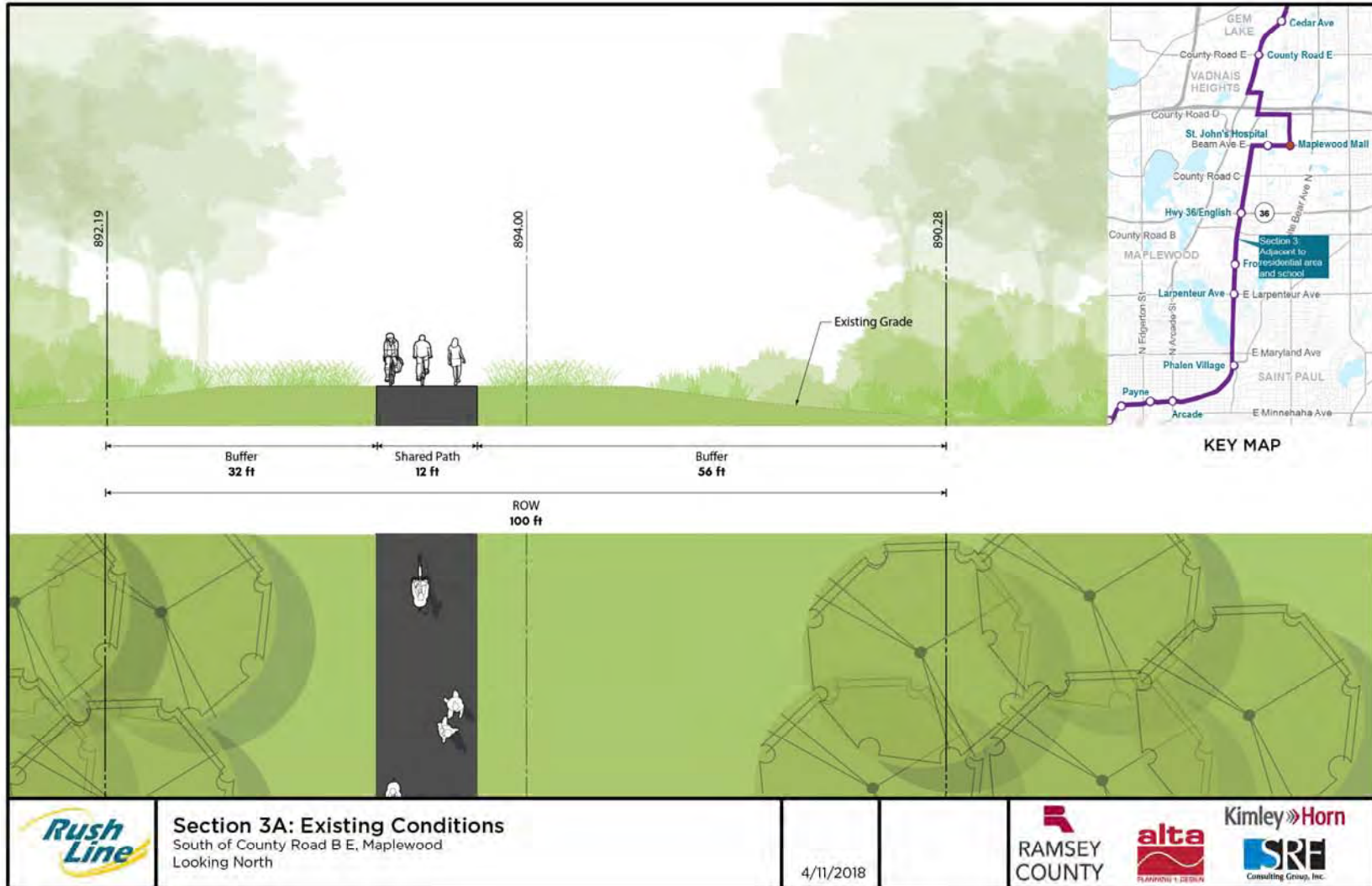




# Ramsey County Regional Railroad Authority Right-of-Way



B R T

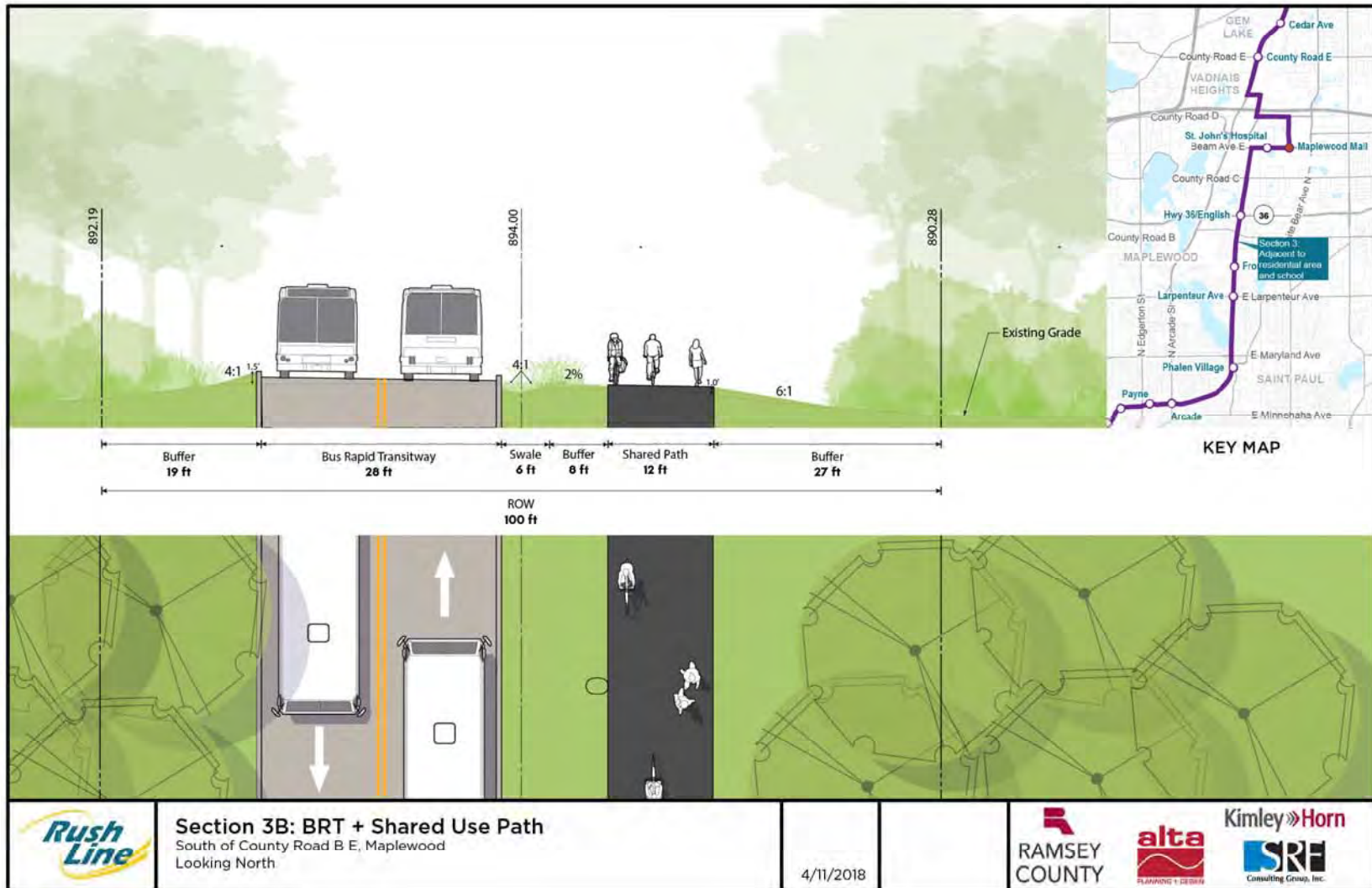




# Ramsey County Regional Railroad Authority Right-of-Way



B R T



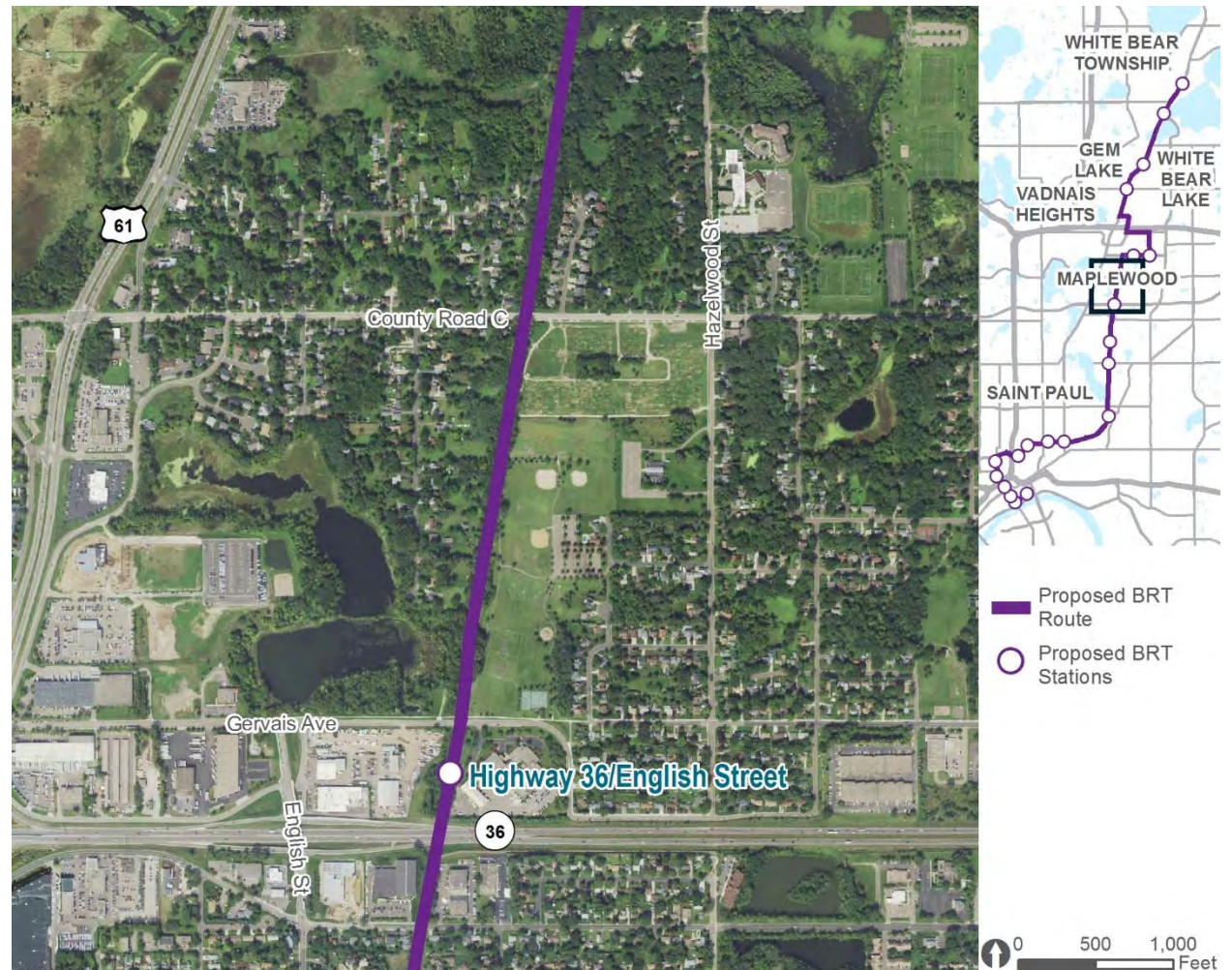


# Project Walk Through



B R T

- Highway 36/English Street station:
  - Evaluating park-and-ride demand.



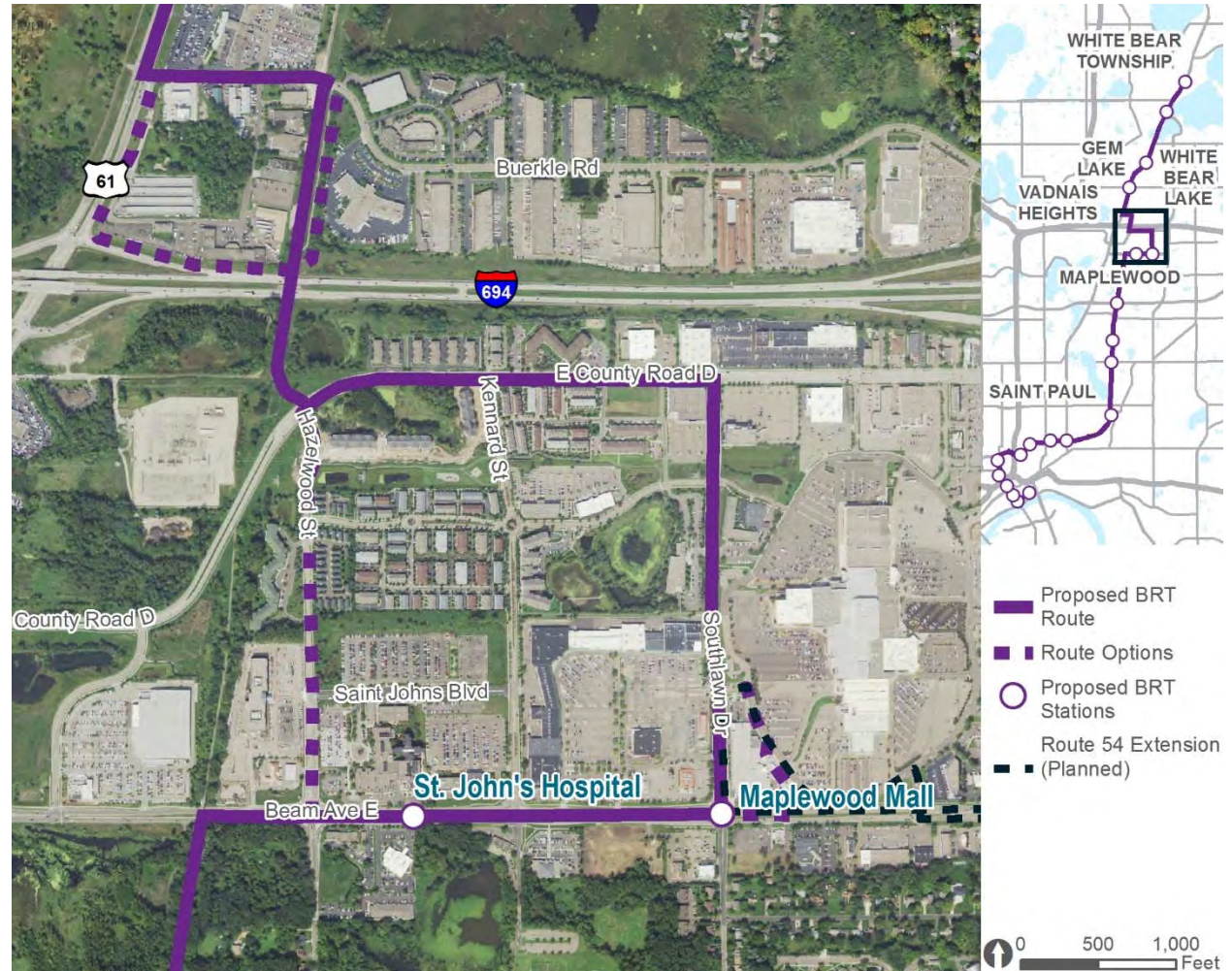


# Project Walk Through



B R T

- Coordinating with the city of Maplewood on their small area plan.
- Evaluating potential route and station options to enhance accessibility and minimize traffic and right-of-way impacts.
- Evaluating design options on Beam Avenue.
  - Transit travel speed.
  - Minimize traffic impacts.



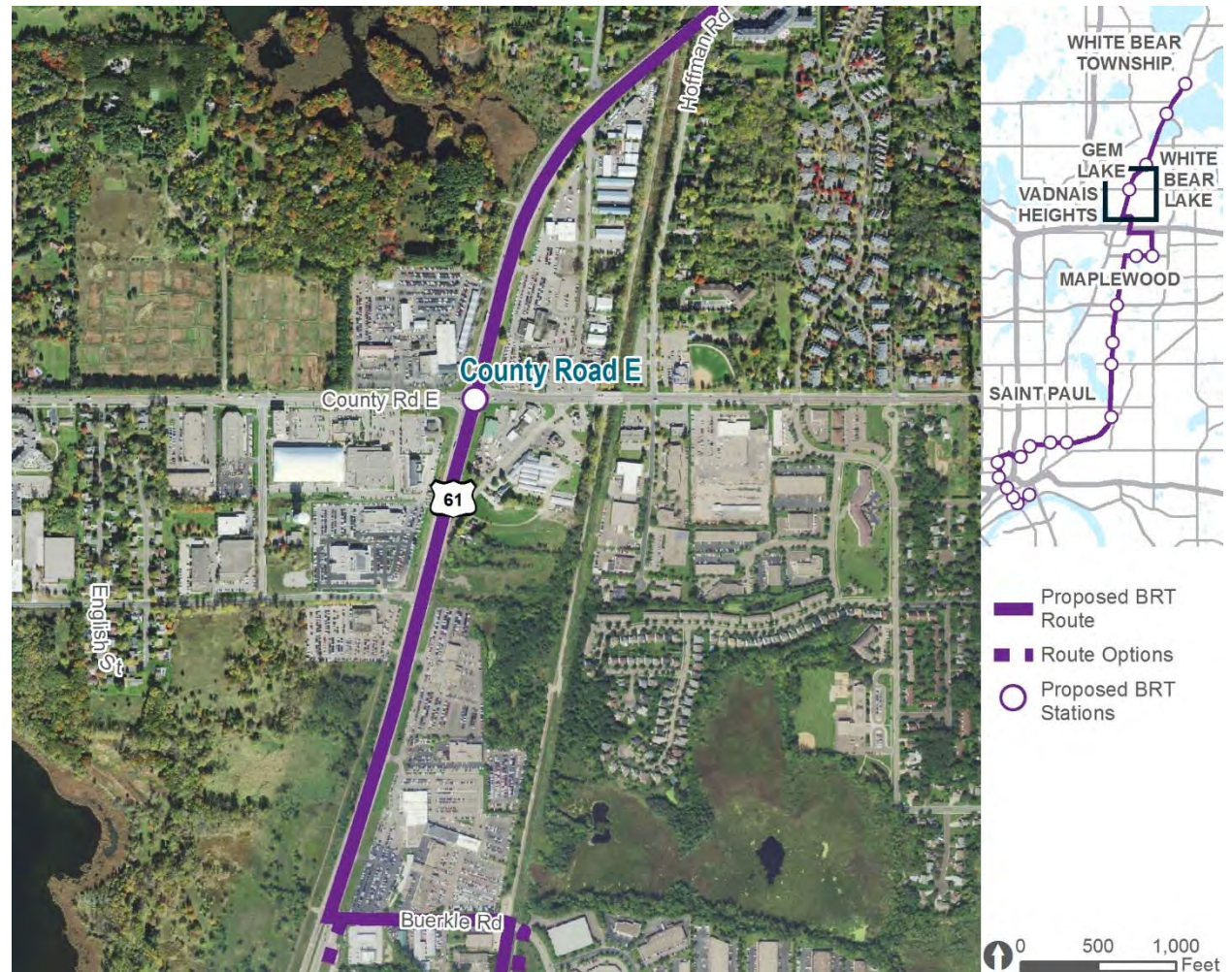


# Project Walk Through



B R T

- Conducting traffic analysis on Buerkle Road and Highway 61.
- Evaluating design options for BRT along Highway 61.
- County Road E station:
  - Assessing location for park-and-ride facility.
  - Assessing Highway 61 crossing options and intersection improvements.



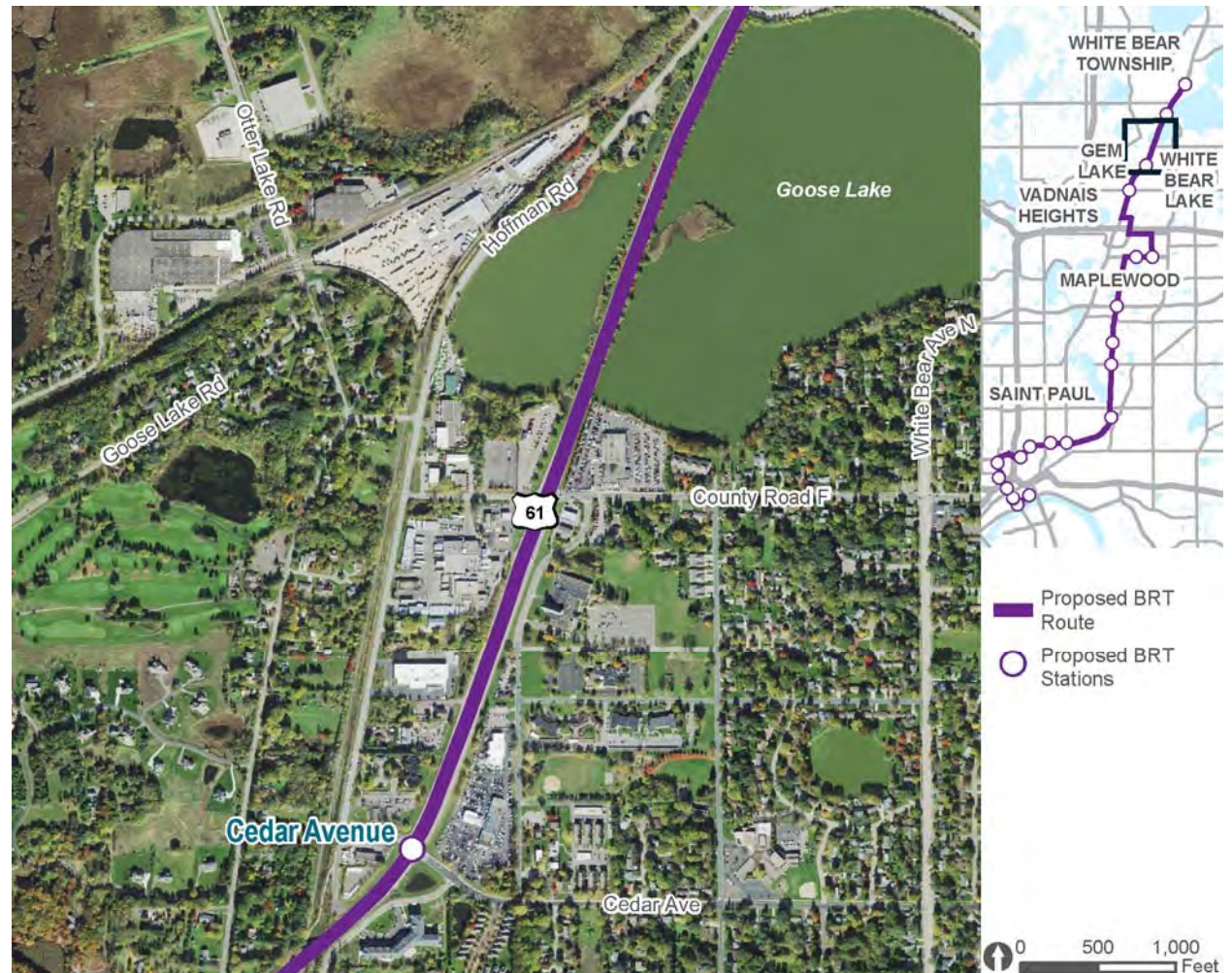


# Project Walk Through



B R T

- Evaluating design options on Highway 61.
- Cedar Avenue station:
  - Assessing Highway 61 crossing options and intersection improvements.
  - Potential shift in station to enhance accessibility.



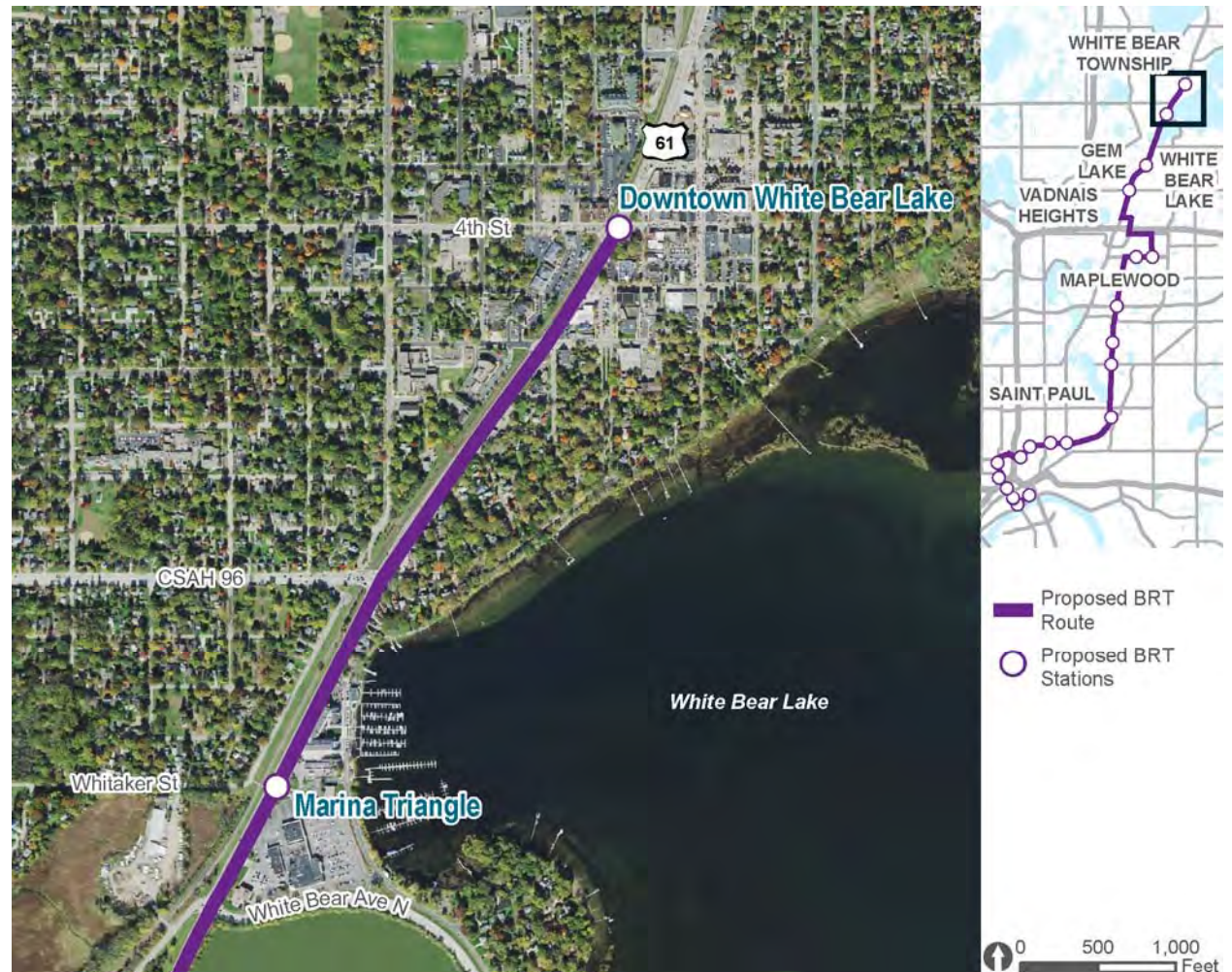


# Project Walk Through



B R T

- Marina Triangle and Downtown White Bear Lake stations:
  - Integrate station with downtown character.
  - Traffic and parking.
  - Safe crossing of Highway 61.
  - Location of park-and-ride.





# Locally Preferred Alternative

- Dedicated guideway BRT.
- Phalen Boulevard and Robert Street into downtown Saint Paul.
- Ramsey County Regional Railroad right-of-way (shared with Bruce Vento Trail).
- Highway 61 north of I-694 into White Bear Lake.
- Explore future connections to the north and other system improvements.





## Public Comment

- When commenting, please:
  - Be respectful.
  - Be brief. Limit comments to three minutes to give others an opportunity to speak.
- Public comments will be included in the Policy Advisory Committee meeting summary.
- The Chair reserves the right to limit an individual's comments if they become redundant, disrespectful or are not relevant to the Rush Line BRT Project.





## Next Policy Advisory Committee Meeting

- Thursday, July 26.
- 3-5 p.m.
- Hiway Federal Credit Union.





*Rush  
Line*

B R T

# Thank you!



[rushline.org](http://rushline.org)



[facebook.com/rushline](https://facebook.com/rushline)



[info@rushline.org](mailto:info@rushline.org)



[@rushlinetransit](https://twitter.com/rushlinetransit)



651-266-2760