



*Rush
Line*

B R T

September 27, 2018

POLICY ADVISORY COMMITTEE

ENVIRONMENTAL ANALYSIS PHASE

Agenda

1. Welcome and introductions.
2. Overview of project activities and process.
3. Public engagement update.
4. Community Advisory Committee update.
5. Overall project walk through.
6. Public comment.
7. **Policy Advisory Committee action requested.**
 - **Confirm Technical Advisory Committee recommendation on the project elements to be studied in the Environmental Assessment, which reflect input from advisory committees and public engagement efforts.**
8. Next steps and upcoming activities.
9. Next Policy Advisory Committee meeting.

Recap of July Policy Advisory Committee Meeting

- July 26 meeting:
 - Public engagement and Community Advisory Committee update.
 - Environmental review update.
 - Schedule and municipal collaboration process review.
 - Highlights from issue resolution teams and station area planning process.

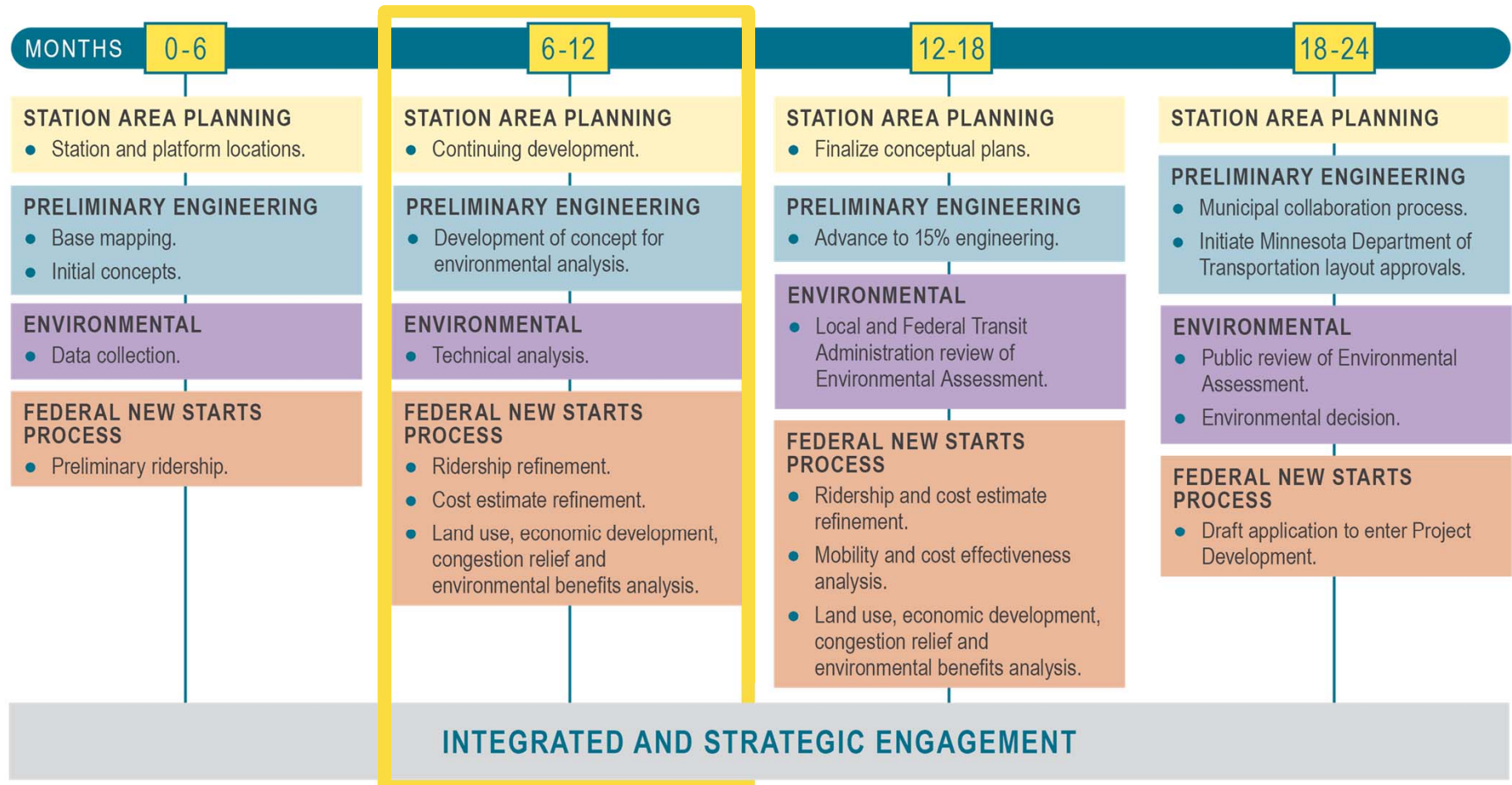
Environmental Analysis Phase Schedule



B

R

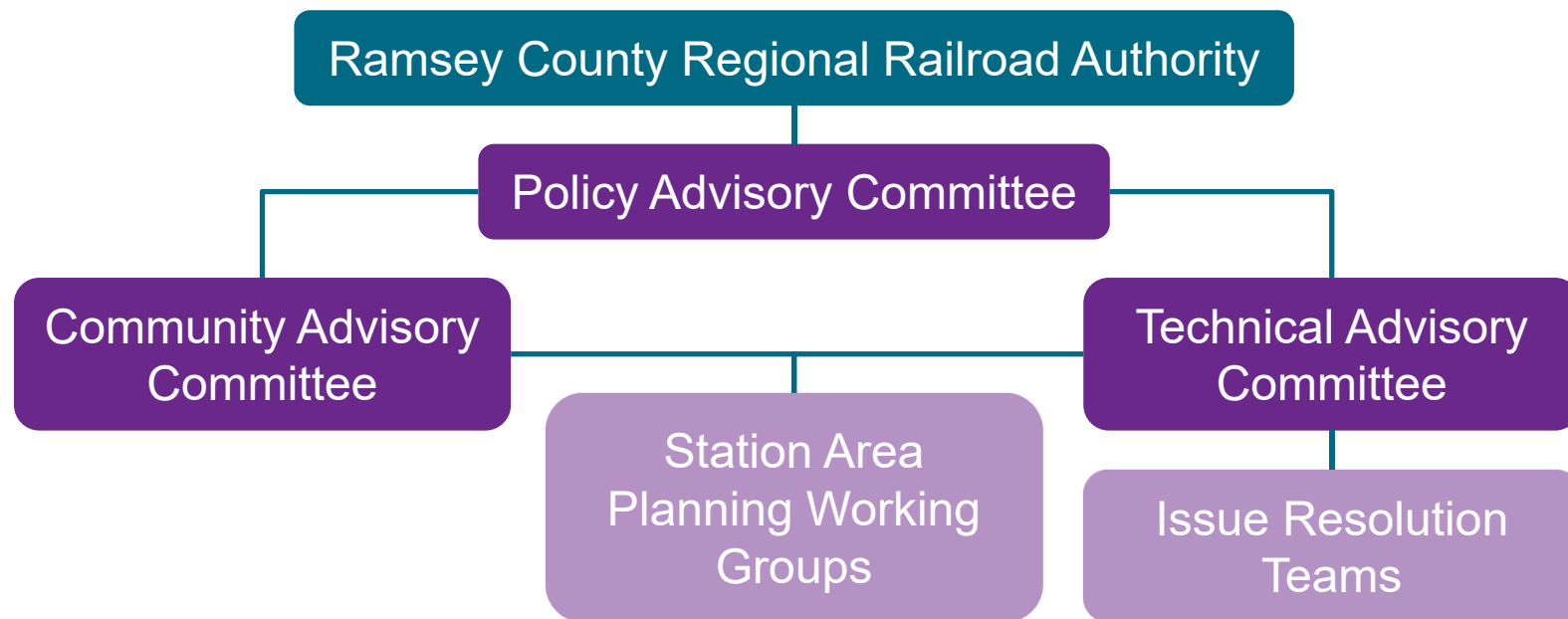
T



Environmental Analysis Phase Advisory Committees and Working Groups



B R T



Summary of Coordination Activities

Type of Meeting	Number of Meetings
Station area planning working groups	10
Issue resolution teams	18
Agency coordination	32
Total	60

Recent Public Engagement Activities

- August 7: National Night Out at Roosevelt Homes and Hmong American Partnership.
- August 16: Midwest Special Services Block Party.
- August 16: Clean Fleets for Healthy Neighborhoods.
- August 18: CLUES Fiesta Latina.
- August 19: Vadnais Heights Heritage Days.
- August 21: North End Study Kickoff.



CLUES Fiesta Latina in Saint Paul

Recent Public Engagement Activities

- August 22: End of Summer Celebration.
- August 28: Move Minnesota Bruce Vento Trail Ride.
- September 8: White Bear Township Day.
- September 18: Gem Lake City Council meeting.
- September 22: Payne Arcade Harvest Festival.



Move Minnesota Bruce Vento Trail Ride

Public Engagement

- Goals:
 - Inform a diverse public.
 - Collect input from a diverse public.
 - Use public input to shape the project.
- From March through September 2018:
 - Conducted or staffed 87 events.
 - Engaged with over 1,300 community members, business owners and other stakeholders.
 - Recorded over 700 comments.
 - Documented in public engagement summary.

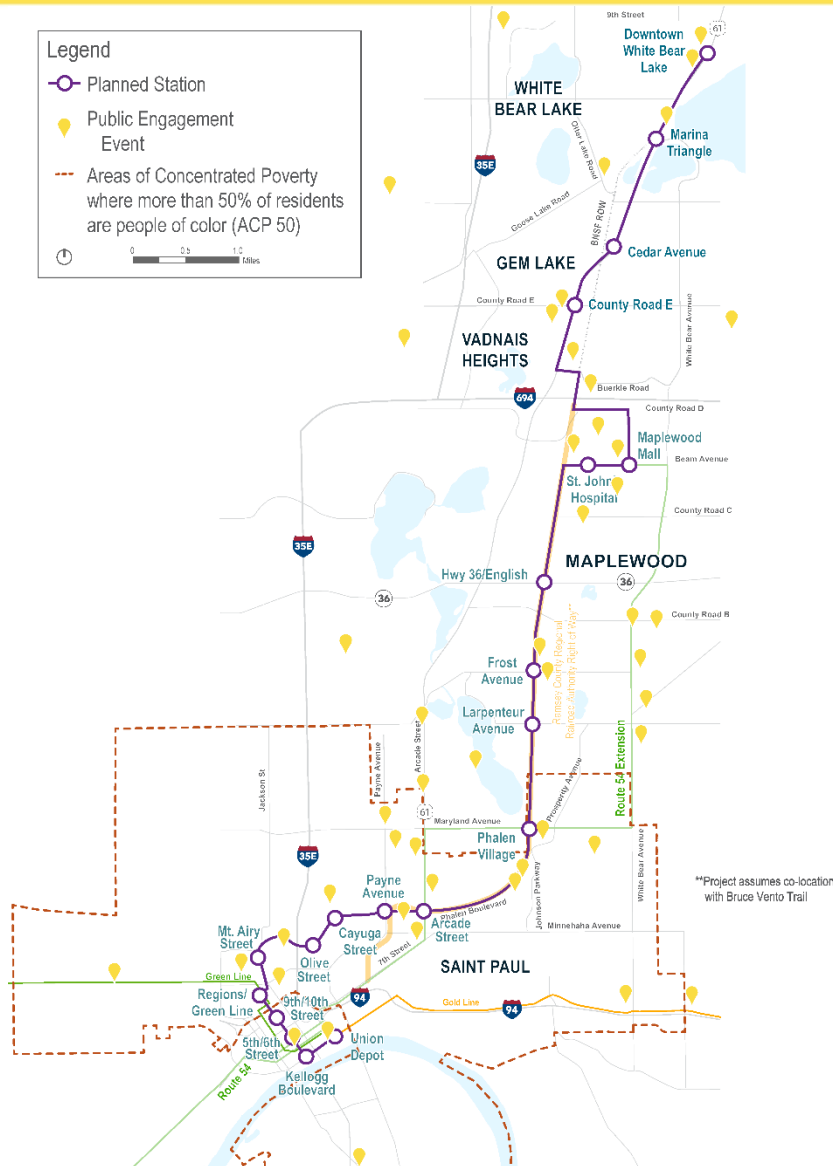


End of Summer Celebration in Maplewood

Public Engagement



B R T



- Emphasis on engaging diverse communities in the corridor.
- The project team prioritized which events to attend using the following criteria:
 - Equity.
 - Inclusivity.
 - Maximizing voices heard.
 - Geographic representation.

Public Engagement

- Main themes from engagement to date:
 - Support from transit users and non-transit users alike.
 - Usefulness and value to residents, employees and visitors of the corridor.
 - Accessibility of the Rush Line BRT.
 - Connectivity to stations by bus, walking and biking in Saint Paul neighborhoods and suburban communities.
- Notable topics of interest:
 - Changes to the Bruce Vento Trail.
 - Safety.
 - Vehicle choice.



Bruce Vento Trail pop-up event

Public Engagement

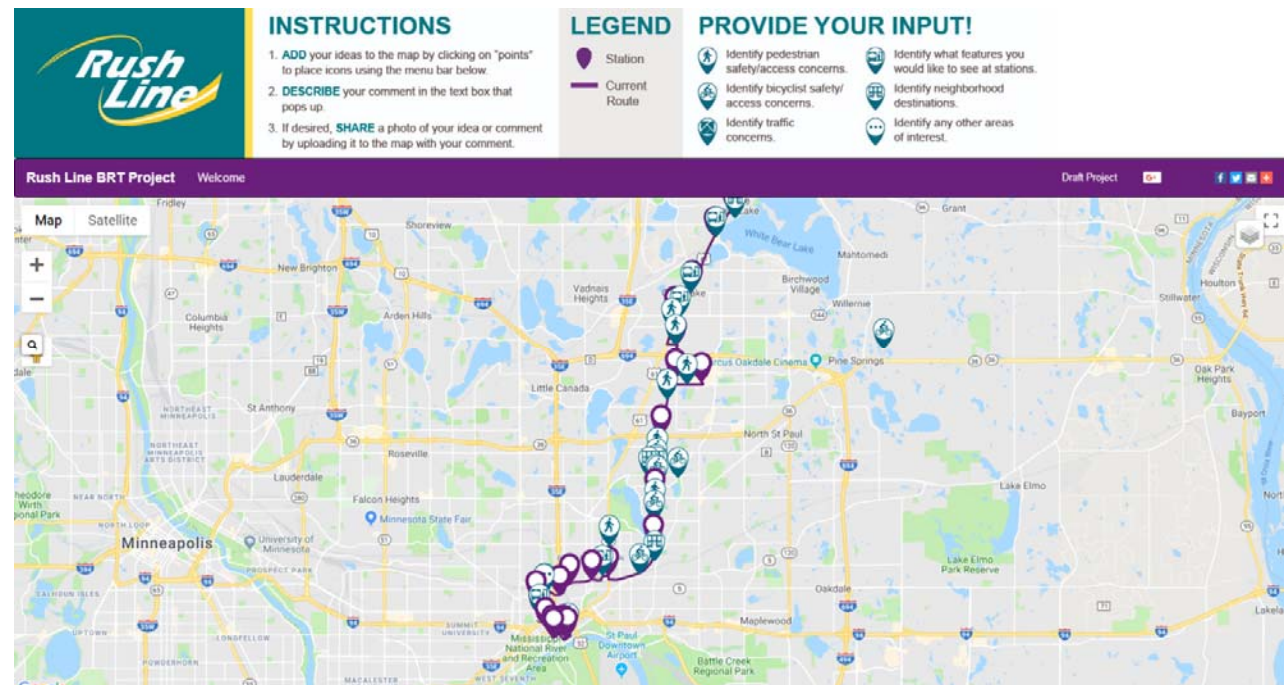
- How input is being used to shape the project:
 - Refinement of station locations.
 - Design of guideway and Bruce Vento Trail in Ramsey County Regional Railroad Authority right-of-way.
 - Refined routing to better serve the Maplewood Mall Transit Center and St. John's Hospital.
 - Consideration of stations at Cook Avenue and Buerkle Road.



Johnson Senior High School Leadership Class

Upcoming Public Engagement Activities

- Collect input through online “WikiMap”.
- October 25: Presentation to Railroad Island Task Force.
- Additional in-person engagement, including round-table discussions.



The project “WikiMap” will be promoted after September 27.

Community Advisory Committee Update

- Second meeting held September 18.
 - Elected co-chairs:
 - TraNeicia Sylvester (Saint Paul).
 - Bob Morse (Vadnais Heights).
 - Public engagement and project updates.
 - Project walk-through.
 - Invited to upcoming health impact evaluation workshop and corridor tour.



September 18 Community Advisory Committee meeting

Evaluation of Refinements

- Meets the Project's purpose and need.
 - Purpose:
 - To provide transit service that satisfies the long-term regional mobility and accessibility needs for businesses and the traveling public and supports sustainable development with the study area.
 - Needs:
 - Planning for sustainable growth and development.
 - Serving the needs of people who rely on transit.
 - Limited sustainable travel options.
 - Increasing demand for reliable, high-frequency transit.
- Competitive project for federal New Starts funding.

Why Define the Project Elements for the Environmental Assessment?

- Communication tool for effective engagement.
- Defines the area of evaluation for thorough analysis.
- Sets framework for stakeholder agency participation.
- Next step in the Federal Transit Administration's New Starts process.

Adopted Locally Preferred Alternative



B R T

From Pre-Project Development Study



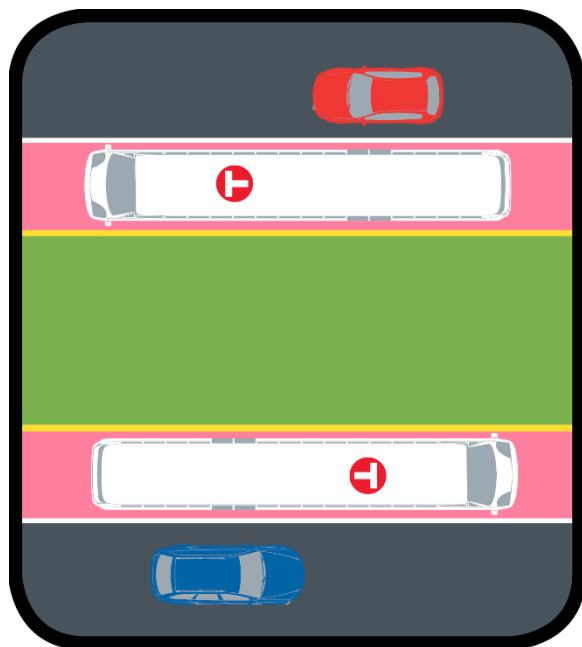
With Refined Project Elements



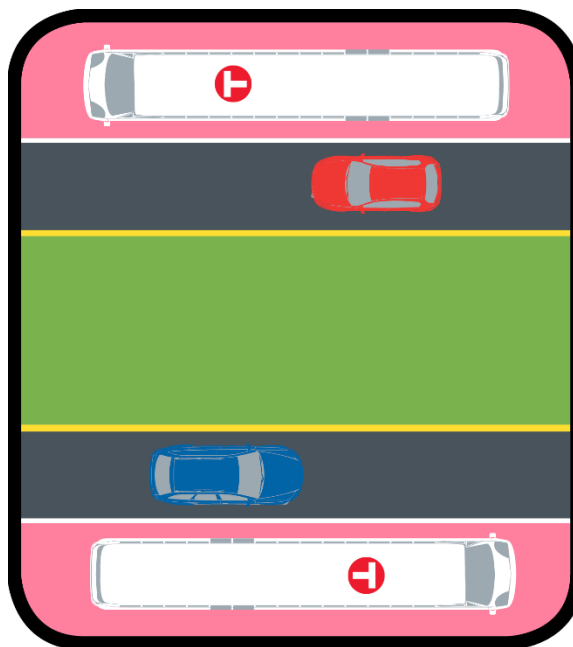
Guideway Options



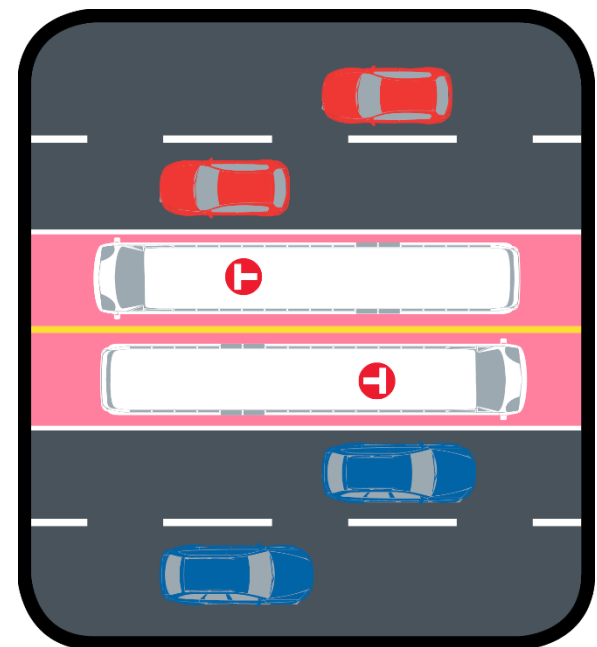
B R T



Inside Running



Outside Running
(Business Access and Transit Lane)

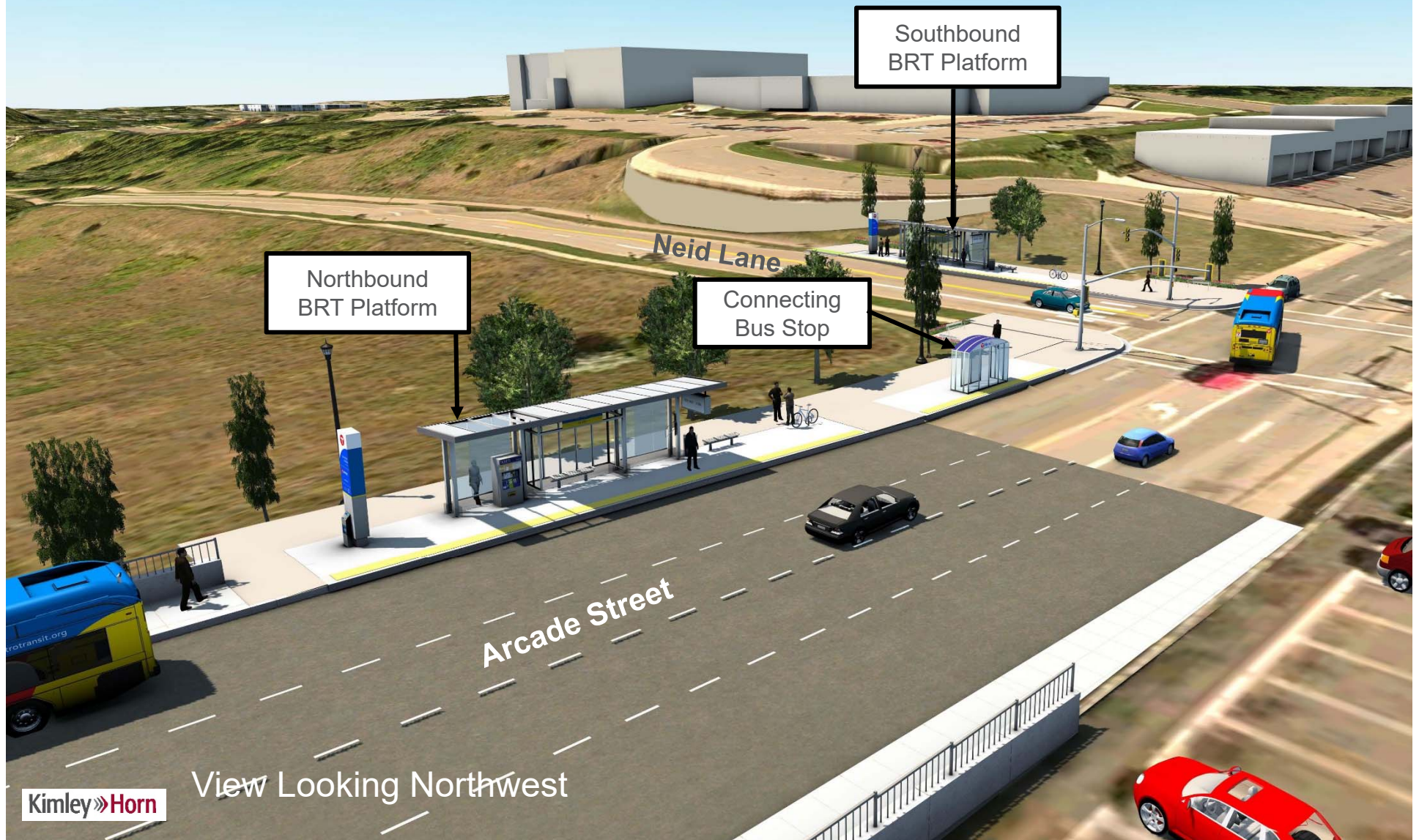


Center Running

Station Rendering (Arcade Street Station)

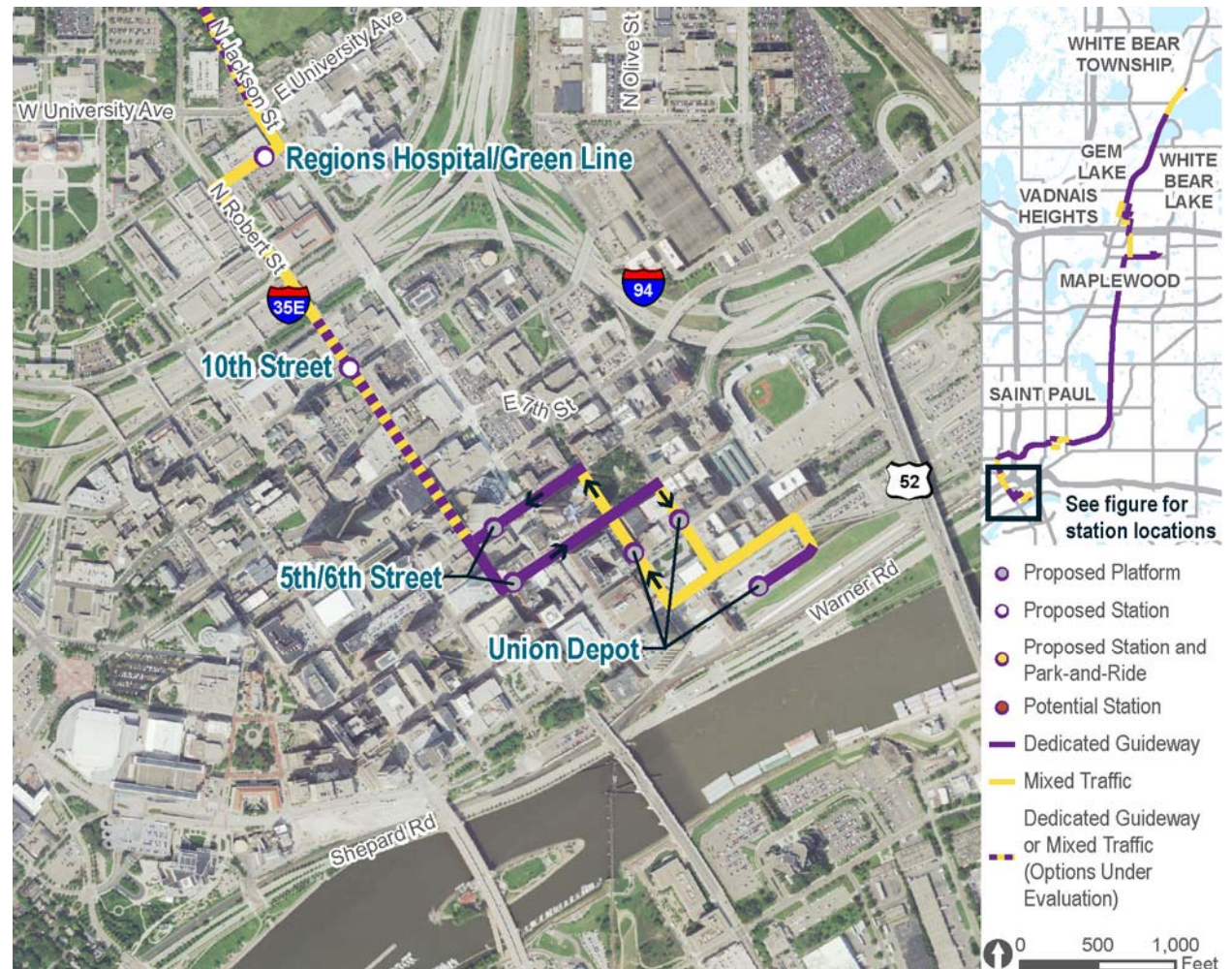


R P T



Project Walk Through

- Refined downtown routing.
- Three potential platforms for Union Depot.
- Ongoing Robert Street coordination with Minnesota Department of Transportation.
- Additional traffic analysis for dedicated transit lanes needed.



See Exhibits 1-2

Project Walk Through

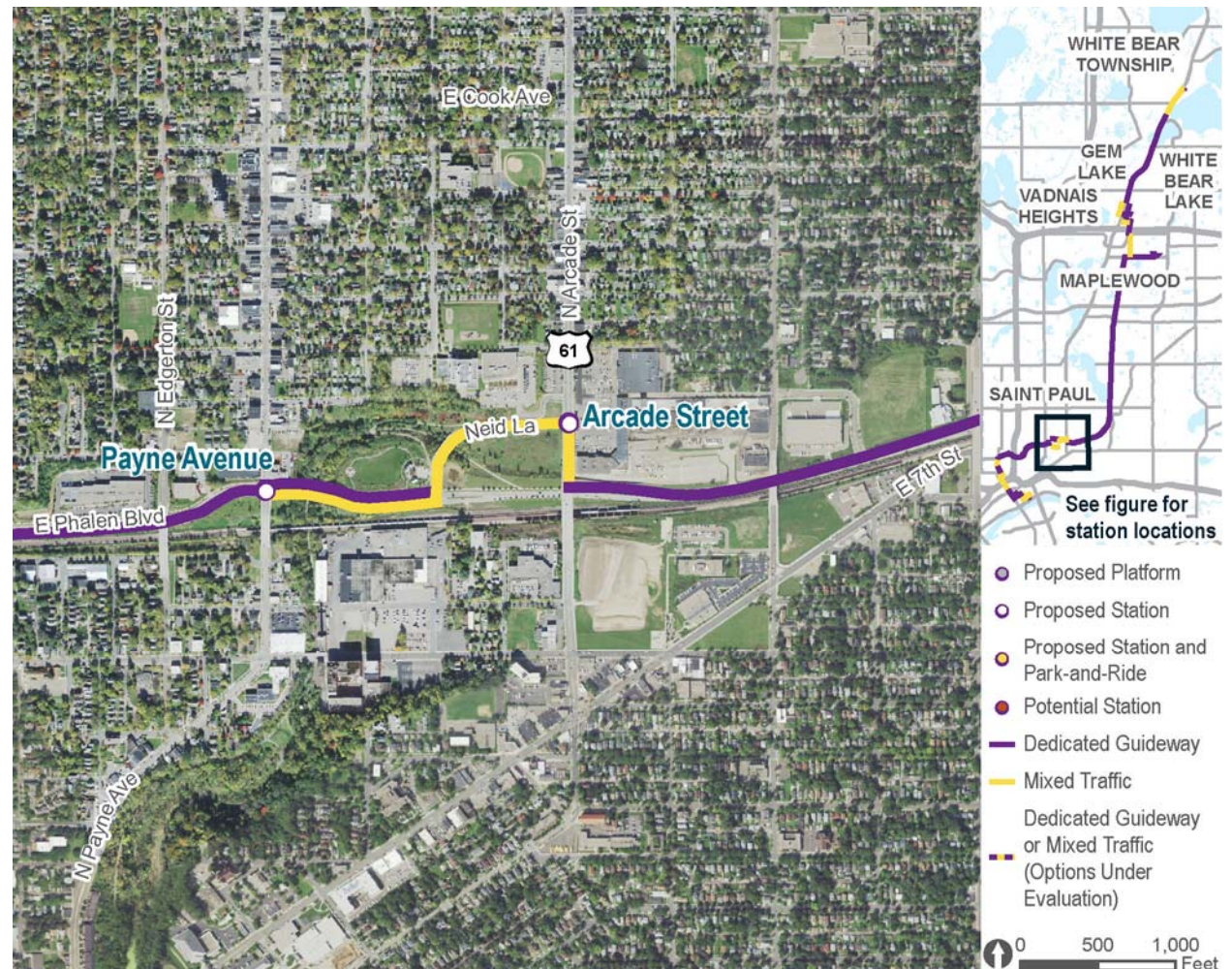
- Regions Hospital/
Green Line station
location.
- Dedicated and
mixed traffic options
on Jackson Street.
- Further refinement
of transit advantage
options on Phalen
Boulevard.



See Exhibits 3-4

Project Walk Through

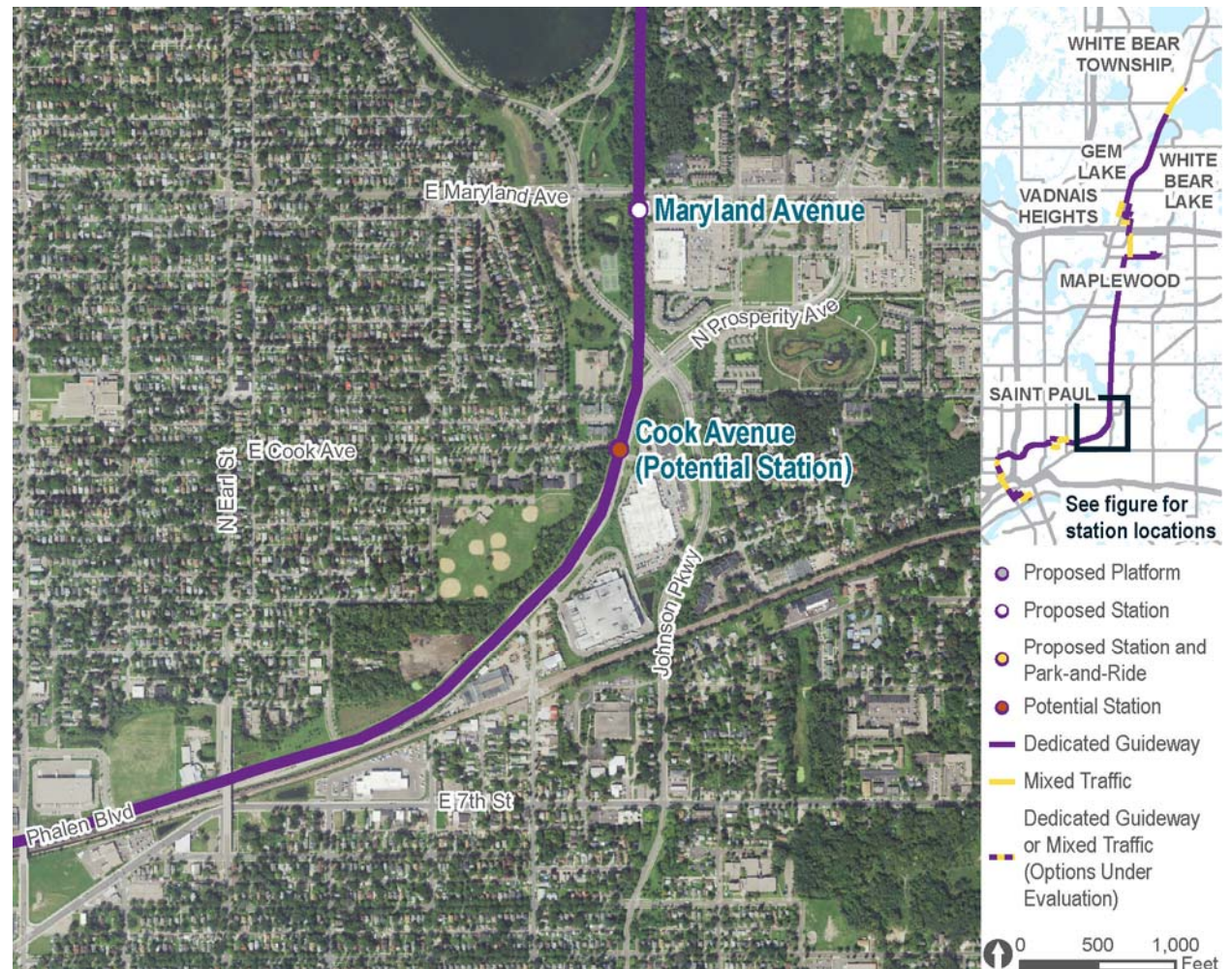
- Payne Avenue intersection improvements.
- Arcade Street station location at Neid Lane.
- Refined routing including new bridge.



See Exhibits 5-6

Project Walk Through

- Potential Cook Avenue station.
- Maryland Avenue station.
- New bridge over Johnson Parkway and trail connection.
- Ongoing stormwater management coordination.



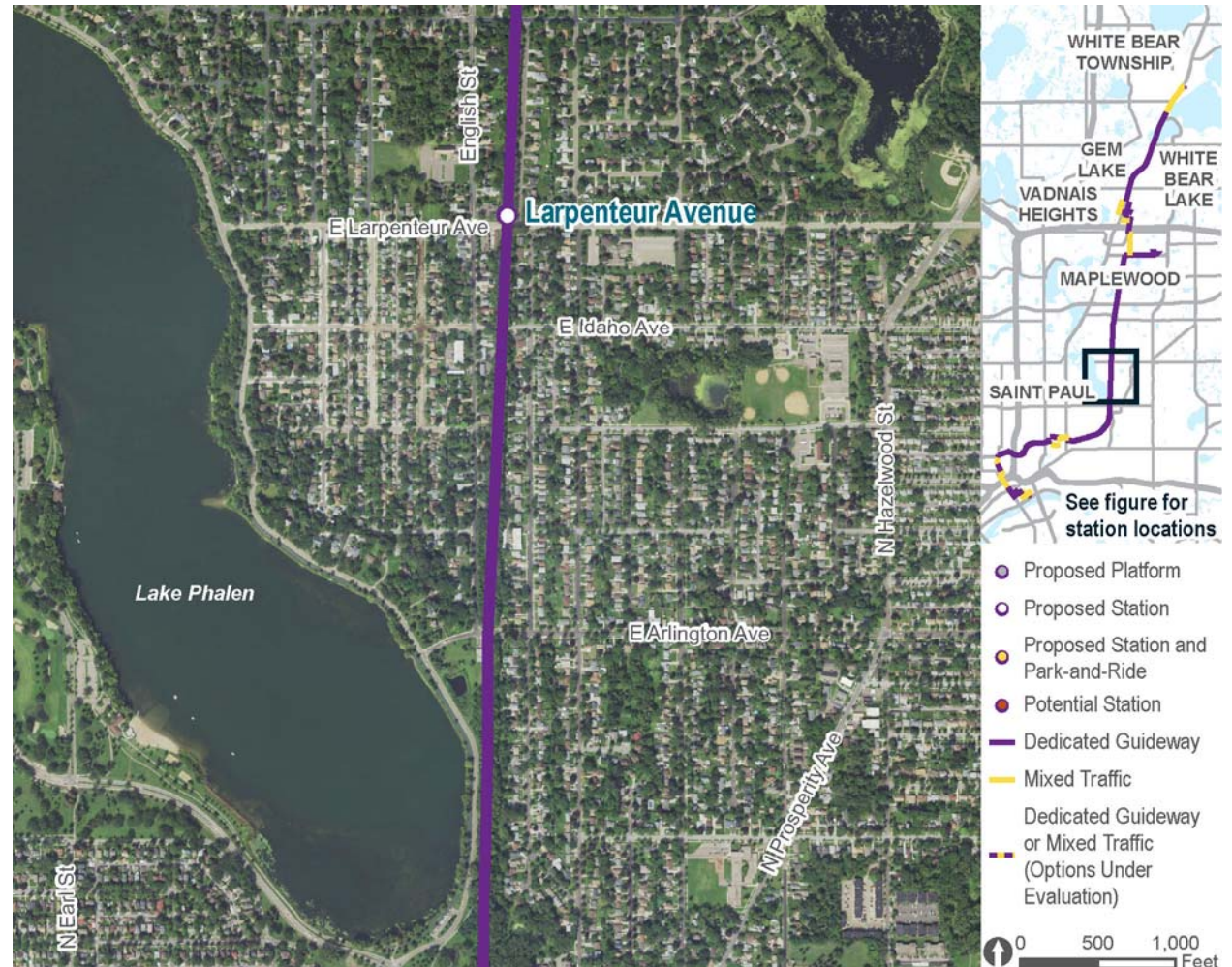
See Exhibits 7-9

Project Walk Through



B R T

- Reconstructed Bruce Vento Trail.
- Potential underpass closure south of Arlington Avenue.
- Further evaluation of crossing at Idaho Avenue.
- Pedestrian improvements on Larpenteur Avenue.

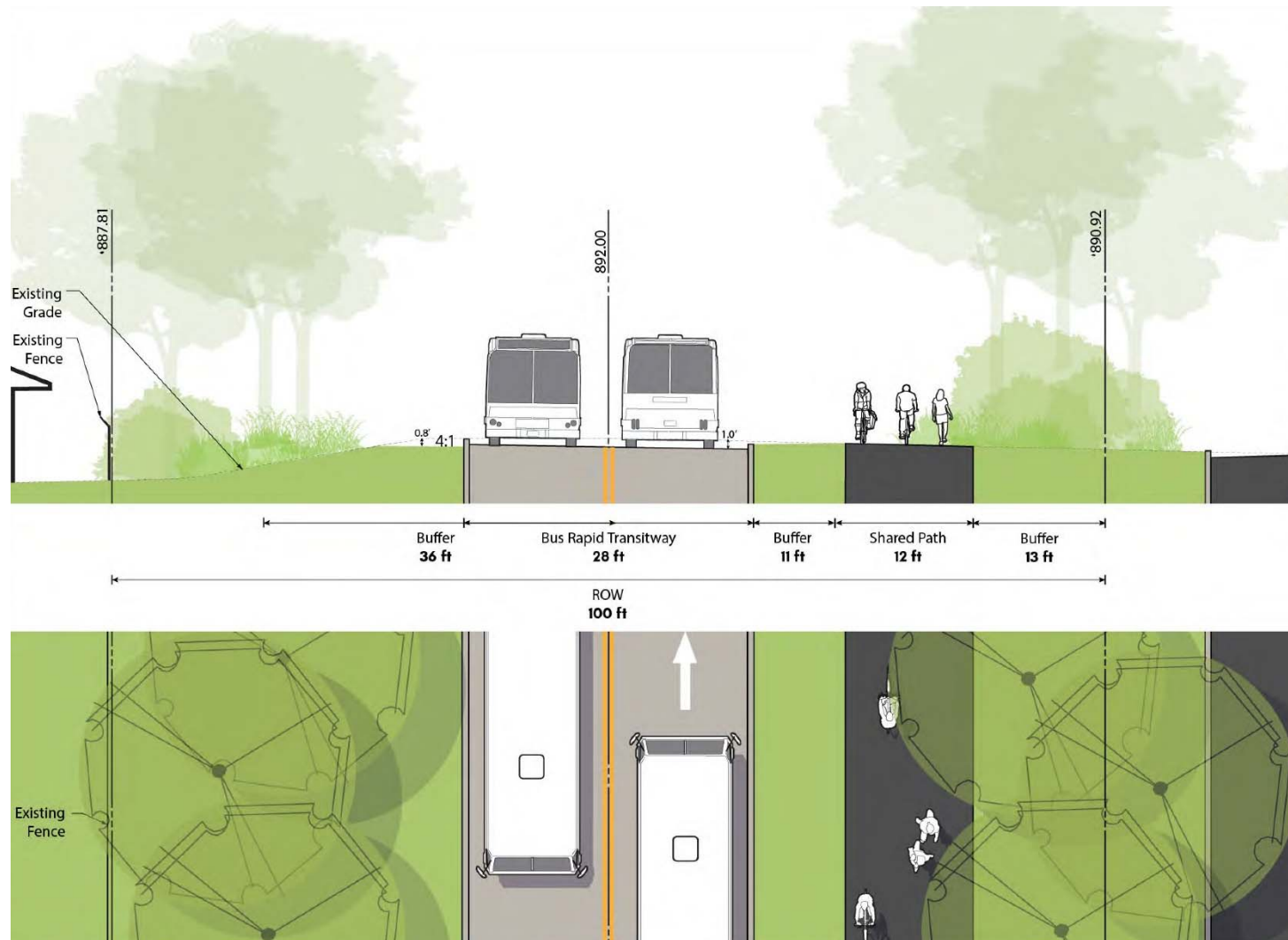


See Exhibits 9-11

Ramsey County Regional Railroad Authority Right-of-Way



B R T



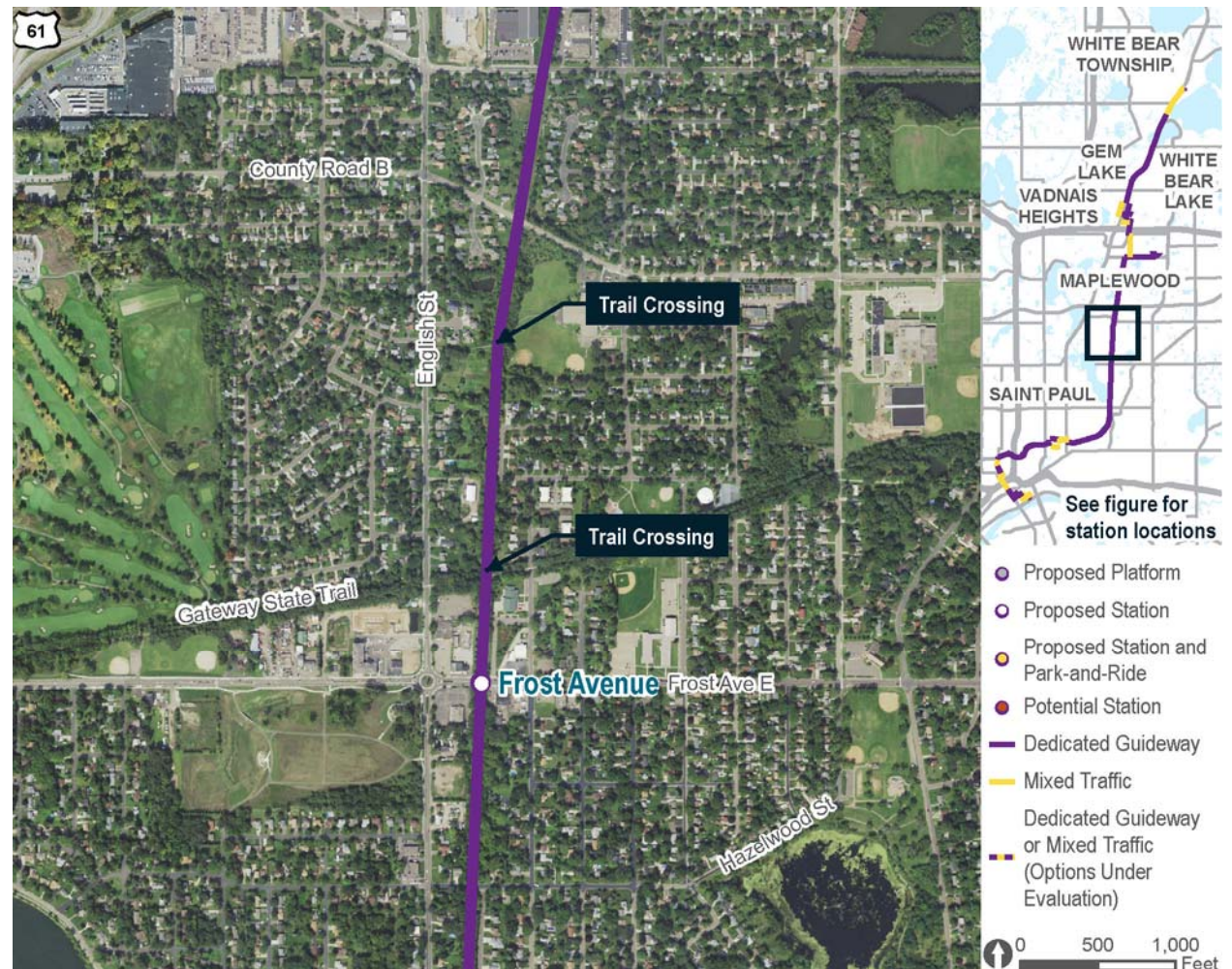
North of Larpenteur Avenue in Maplewood, Looking North

Project Walk Through



B R T

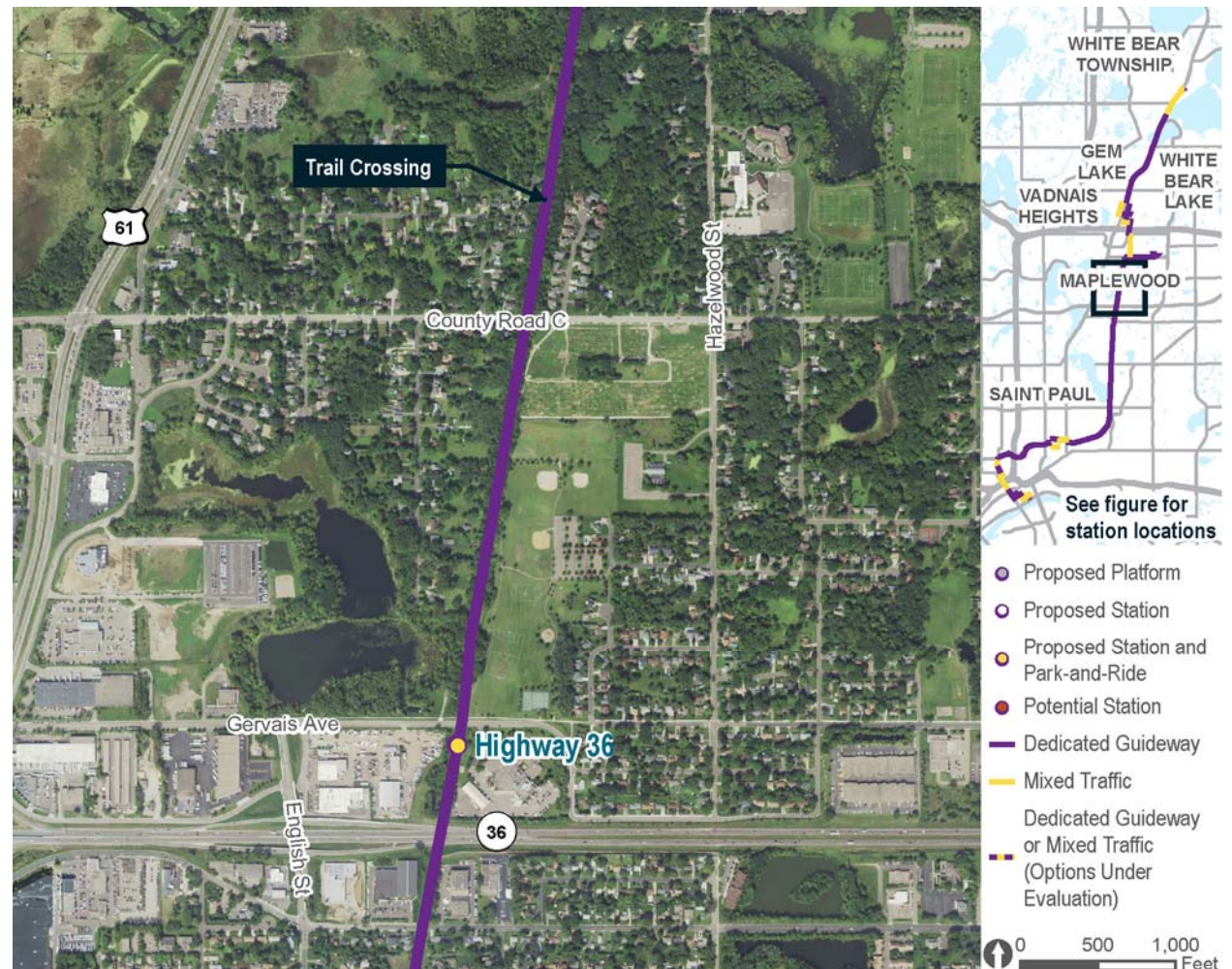
- Frost Avenue is part of Maplewood's Gladstone Redevelopment Master Plan.
- Crossing of Gateway State Trail.
- Consider grade-separated crossing at Weaver Elementary School.



See Exhibits 12-13

Project Walk Through

- Park-and-ride location under evaluation.
- Trail crossing north of County Road C.



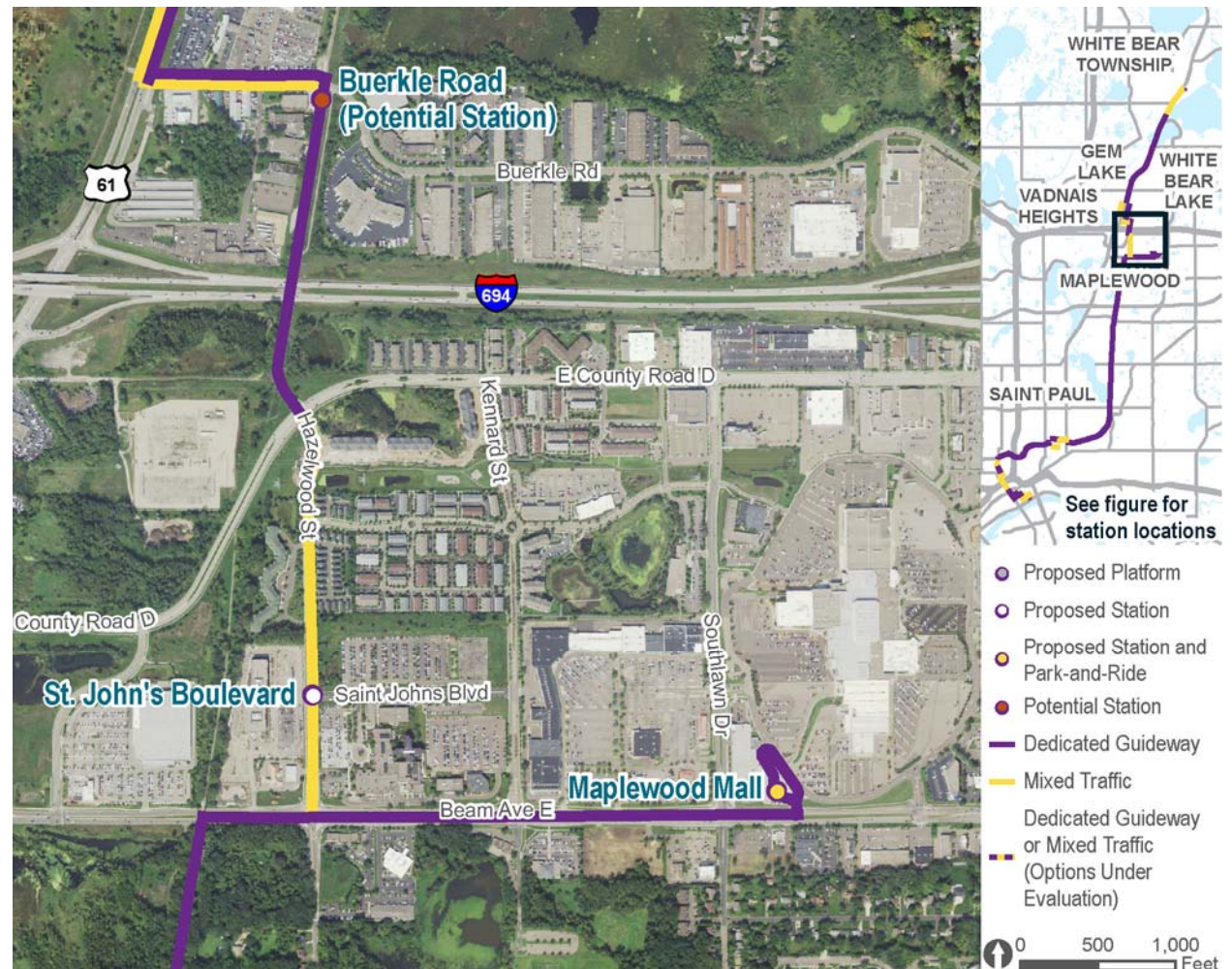
See Exhibits 14-15

Project Walk Through



B R T

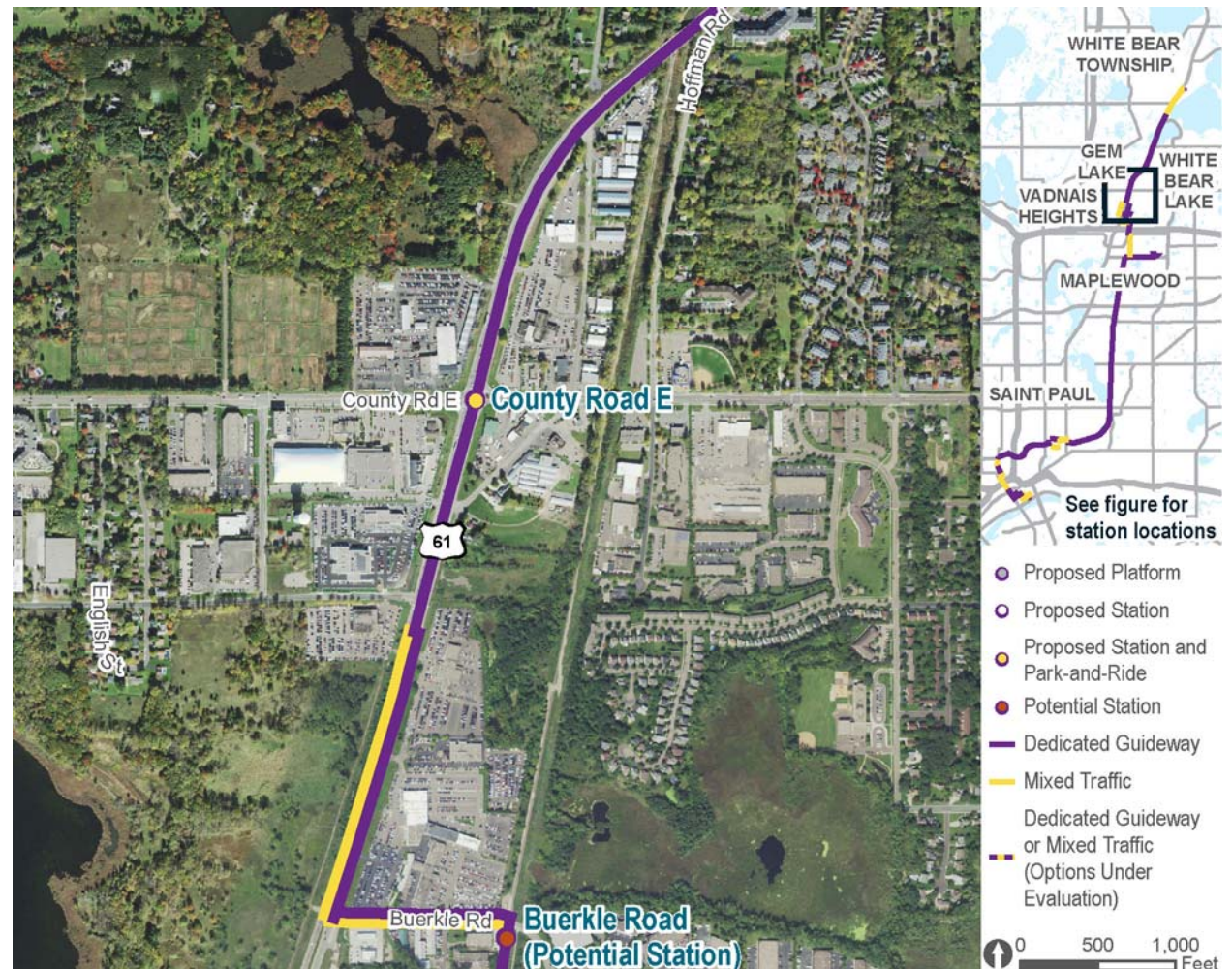
- Refined routing to Maplewood Mall Transit Center and St. John's Hospital.
- I-694 crossing options.
- Potential Buerkle Road station and pedestrian improvements.
- Improvements to intersection operations at Buerkle Road and Highway 61.



See Exhibits 15-19

Project Walk Through

- Joint use parking facility at Vadnais Sports Center under evaluation.
- County Road E platforms on south side.
- Pedestrian improvements at Highway 61 and County Road E crossings.
- Additional traffic analysis for dedicated lanes on Highway 61.



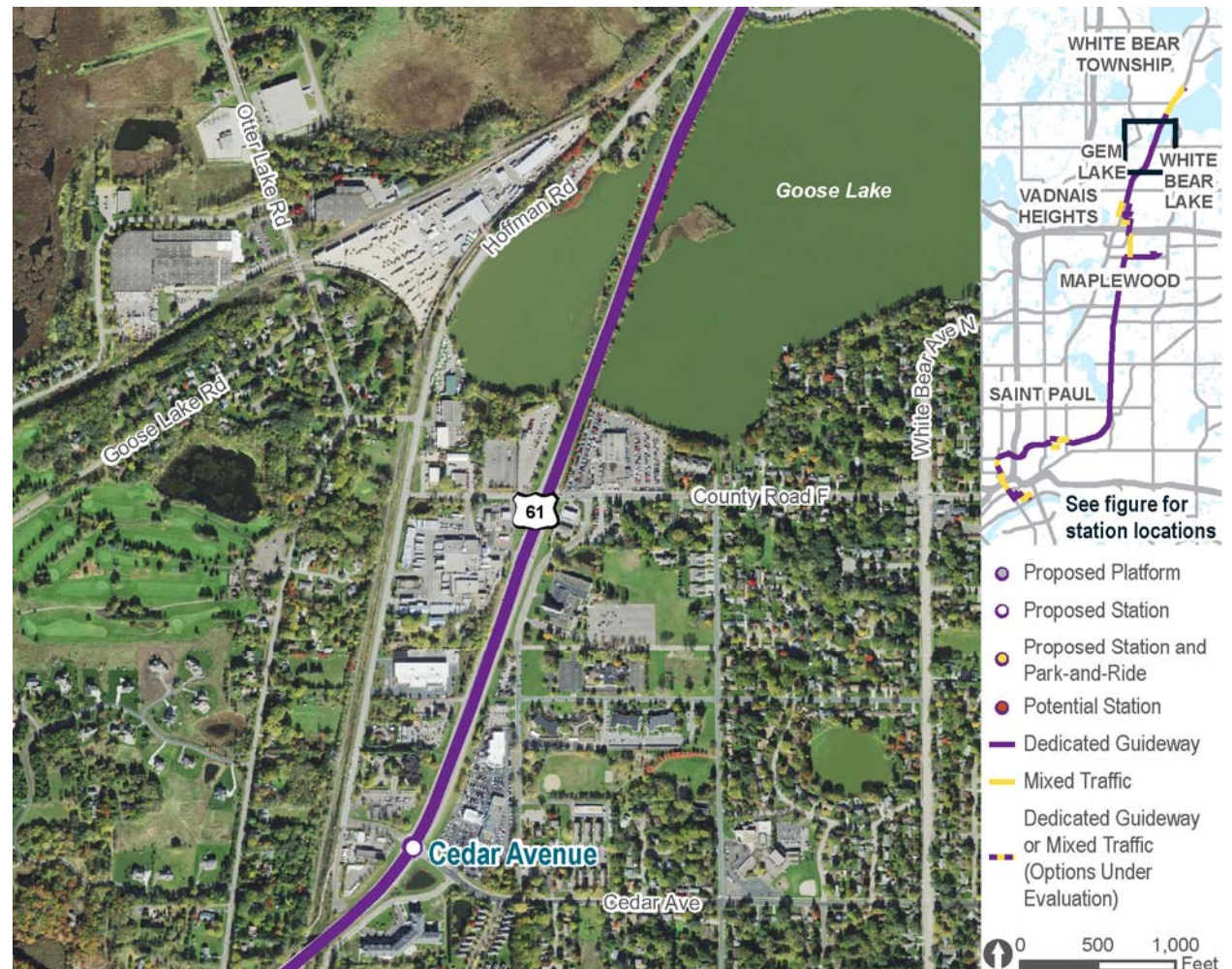
See Exhibits 19-20

Project Walk Through



B R T

- Cedar Avenue station platforms on north side.
- Pedestrian improvements to connect to future Bruce Vento Trail extension.



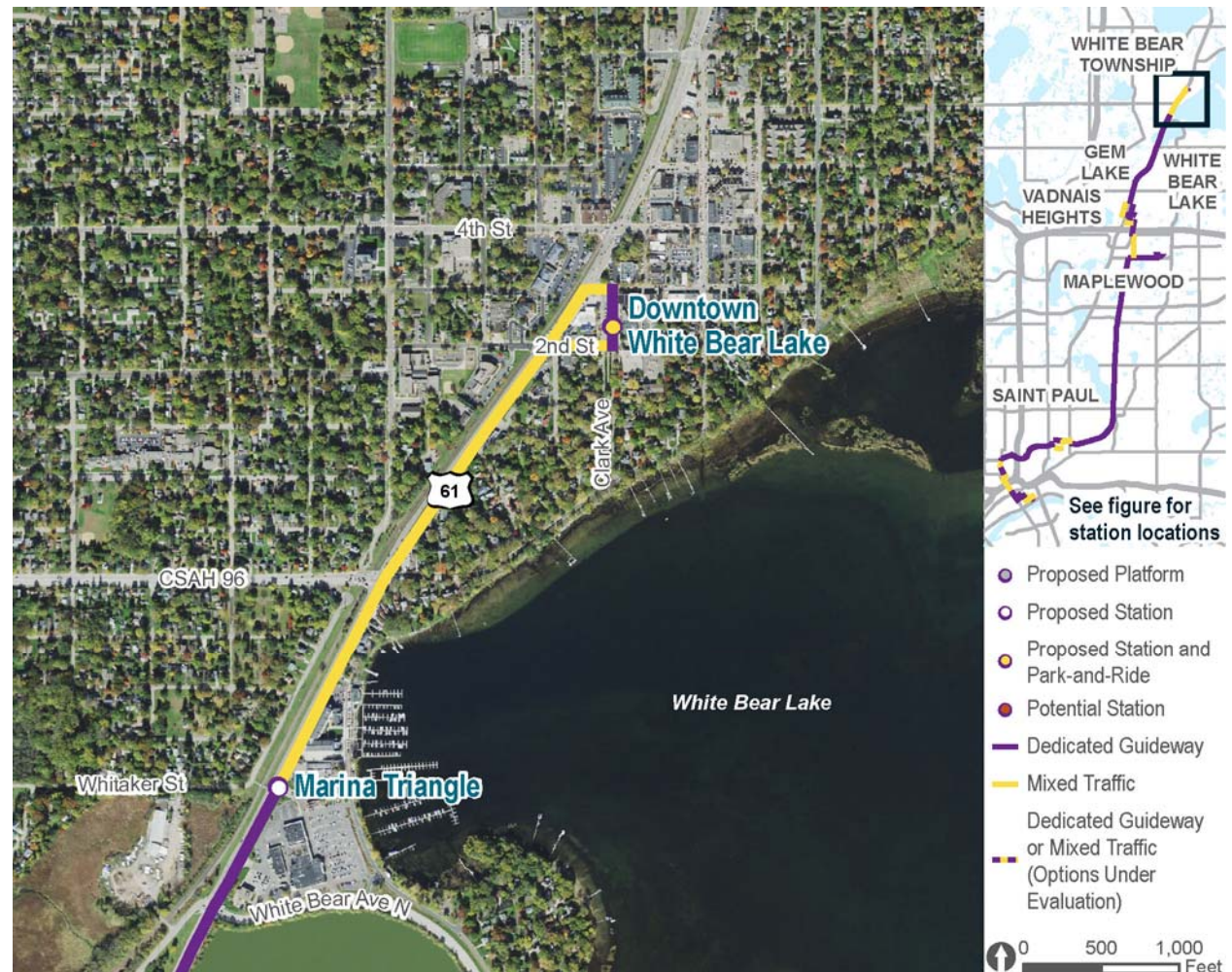
See Exhibits 21-22

Project Walk Through



B R T

- Roadway improvements at Marina Triangle station.
- Explore full signal at Whitaker Street as a local project.
- Pedestrian improvements at Whitaker Street and 2nd Street crossings.
- Potential location of Downtown White Bear Lake station at Clark Avenue and joint use parking facility under evaluation.



See Exhibits 23-24

Adopted Locally Preferred Alternative



B R T

From Pre-Project Development Study



With Refined Project Elements



Next Steps in Evaluation Process

- Further input from the public and partner agencies on refinements.
- Technical analysis for environmental assessment.
 - Traffic analysis (e.g., Highway 61, Robert Street, Phalen Boulevard).
 - Water resources/stormwater analysis.
 - Visual analysis and visualizations.
 - Cultural resources (historic properties).
 - Natural environment.
 - Noise analysis.
 - Community/social analysis.
 - Economic analysis.

Next Steps in Evaluation Process

- Corridor-wide analysis.
 - Overall travel time.
 - Project ridership.
 - Capital and operating costs.
 - Overall bus network plan, including connecting bus service.
- Agency coordination specific to the Environmental Assessment.
- Ongoing Federal Transit Administration coordination.

Public Comment

- When commenting, please:
 - Be respectful.
 - Be brief. Limit comments to three minutes to give others an opportunity to speak.
- Public comments will be included in the Policy Advisory Committee meeting summary.
- The Chair reserves the right to limit an individual's comments if they become redundant, disrespectful or are not relevant to the Rush Line BRT Project.

Policy Advisory Committee Recommendation

- Confirm Technical Advisory Committee recommendation on the project elements to be studied in the Environmental Assessment, which reflect input from the project advisory committees and public engagement efforts.
- Next steps include additional public input and advancement of environmental and engineering analysis.

Summary of Next Steps and Upcoming Activities

- Health impact evaluation workshop – 3-5 p.m. on October 30.
- Corridor tour with project advisory committees – 10 a.m. - 1 p.m. on November 14.
- Additional public engagement activities.
- Advance environmental analysis and engineering.
- Coordination with Federal Transit Administration and stakeholder agencies.

Next Policy Advisory Committee Meeting

- Thursday, November 29.
- 2:30-4:30 p.m.
- Maplewood Community Center.



*Rush
Line*

B R T

Thank you!



rushline.org



facebook.com/rushline



info@rushline.org



[@rushlinetransit](https://twitter.com/rushlinetransit)



651-266-2760