



May 12, 2020

COMMUNITY ADVISORY COMMITTEE

MEETING #8

Agenda

1. Virtual meeting procedures.
2. Introductions/icebreaker.
3. Project update.
4. Station design.
5. Future agenda items.

Virtual Meeting Procedures

- Mute your microphone when not speaking.
- All committee members and staff are panelists. Only panelists are able to speak and share video; attendees are only able to view and listen to the meeting.
- Project staff is not recording this meeting and there will be a meeting summary as usual. However, as with any in-person Community Advisory Committee meeting, members of the public may attend and record this meeting.
- Email dmcniel@srfconsulting.com if you are having issues connecting.



***Rush
Line***

B R T

Project Update

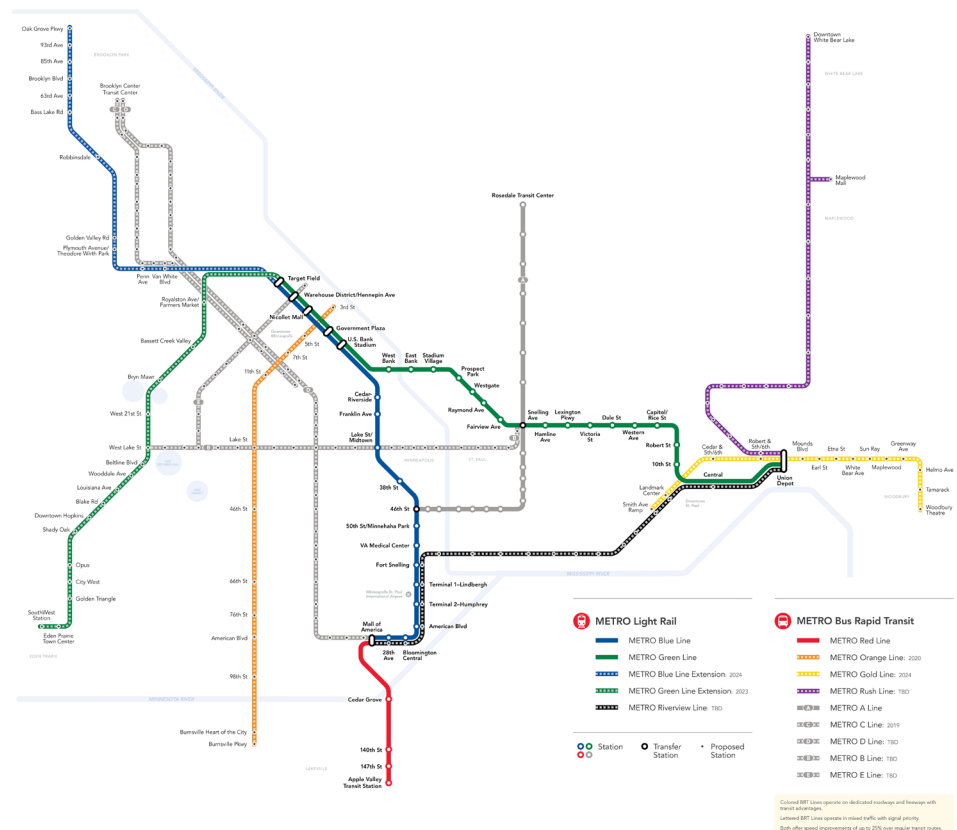
Rush Line BRT Planning During COVID-19

- Project meetings and public engagement focused online to limit in-person contact.
- Progress on engineering and Environmental Assessment remains on track.
- Other regional transit projects also proceeding while following public health guidelines.



Fast. Frequent. All Day. All Yours.

Future Rapid Transit Network





***Rush
Line***

B R T

Engineering Update

15 Percent Plan Overview

- [Plans](#) available in [project library](#).
- 15-mile route.
 - Amount in dedicated guideway:
 - 11.8 miles (78 percent) in northbound direction.
 - 11.2 miles (74 percent) in southbound direction.
- 21 stations.
 - Both platforms for the 5th/6th Street station and two of the platforms serving Union Depot (on Sibley and Wacouta Streets) are assumed to be constructed as part of the METRO Gold Line BRT Project.



15 Percent Plan Review Process

- Draft 15 percent plans were provided to city/township staff, Minnesota Department of Transportation and Metro Transit for review on August 1, 2019.
- Verbal and written comments were received from:
 - Saint Paul.
 - Maplewood.
 - White Bear Township.
 - Vadnais Heights.
 - Gem Lake.
 - White Bear Lake.
 - Minnesota Department of Transportation.
 - Metro Transit.
 - Ramsey County Parks & Recreation.
 - Ramsey County Public Works.

Summary of Refinements to 15 Percent Plans

- Platform locations to provide maximum transit accessibility for both local service and BRT, while minimizing potential impacts.
- Platform height (recommended 10 inches) to contribute to equitable, safe and efficient boarding process.
- Dedicated guideway and intersection design to minimize parking and traffic impacts while providing efficient transit operations.
- Inclusion of additional pedestrian and bicycle facilities to improve station accessibility.

Summary of Refinements to 15 Percent Plans

- Adjusted BRT and Bruce Vento Trail design within the Ramsey County rail right-of-way to improve safety and reflect public input.
- Design refinements to Maplewood Mall Transit Center facility to efficiently serve both existing service and Rush Line BRT and improve customer experience.
- Agreement to review the project with and without the Highway 36 park-and-ride in the Environmental Assessment.
- Commitment to continue coordination with cities, Minnesota Department of Transportation and Metro Transit as design advances.



Environmental Analysis Phase Schedule Update

Environmental Analysis

- Technical reports have been prepared for:
 - Air quality.
 - Environmental justice.
 - Indirect and cumulative impacts.
 - Land use and economics.
 - Natural resources.
 - Noise and vibration.
 - Purpose and need.
 - Section 4(f).
 - Stormwater and water quality.
 - Traffic.

Next Steps for Environmental Assessment

Timeframe	Review
March to June 2020	Ramsey County, Metro Transit and Minnesota Department of Transportation review
June-November 2020	Federal Transit Administration administrative and legal reviews
December 2020	Publish Environmental Assessment and begin 45-day public comment period
January 2021	Environmental Assessment public hearings
April 2021	Anticipated environmental decision



Public Engagement

Recent Public Engagement and Themes

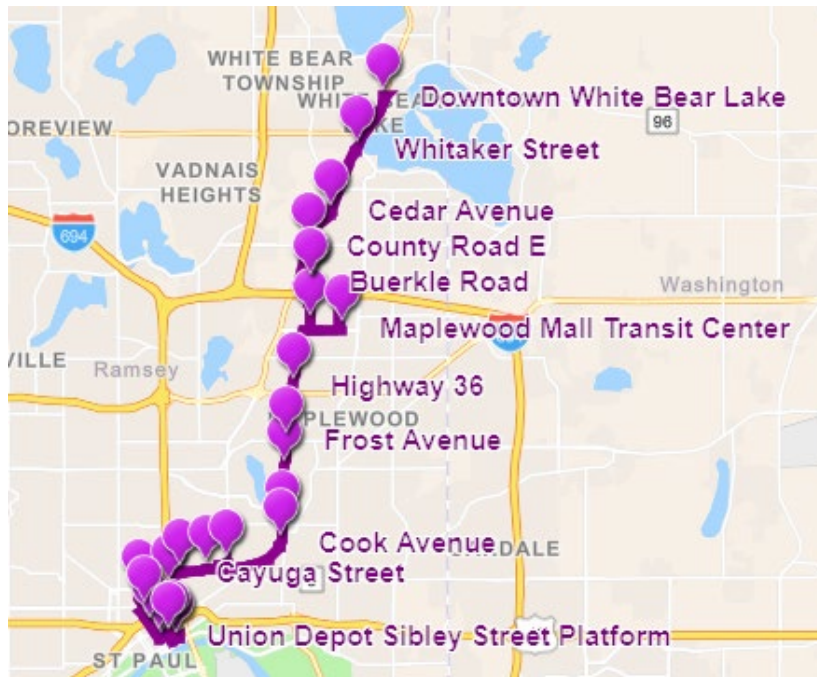
- Comments received via email regarding:
 - Proposed features of Highway 36 park-and-ride and concern about traffic.
 - Interest in improved bicycle and pedestrian connections on Pennsylvania Avenue.



Community Advisory Committee, February 5

Upcoming Public Engagement

- Social media and other online communications.
- Station design survey.



In general, how will you access Rush Line BRT stations? Select all that apply.

☐ Walk

☐ Use a mobility device (e.g. wheelchair or walker)

☒ Bike

☐ Scooter

☒ Transfer from another transit line

☐ Drive and park

☐ Drop-off and pick-up

☐ Lyft/Uber/taxi

☐ Other



Station Design

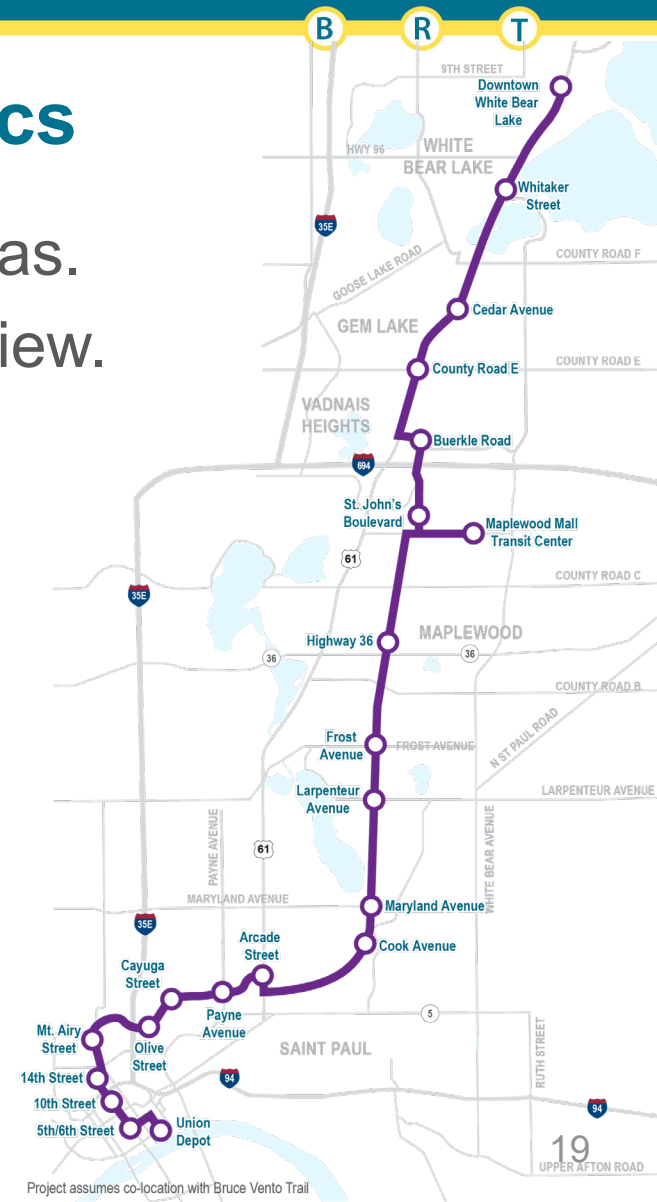
Project and Station Design Timeline

- 15 percent plans completed.
- Station site plans will be advanced throughout the next year.
- Design of vertical station elements (shelter, etc.) will begin in the next phase of the project after reaching 30 percent design; anticipated late 2021.
 - Metropolitan Council expected to be lead agency at this time.

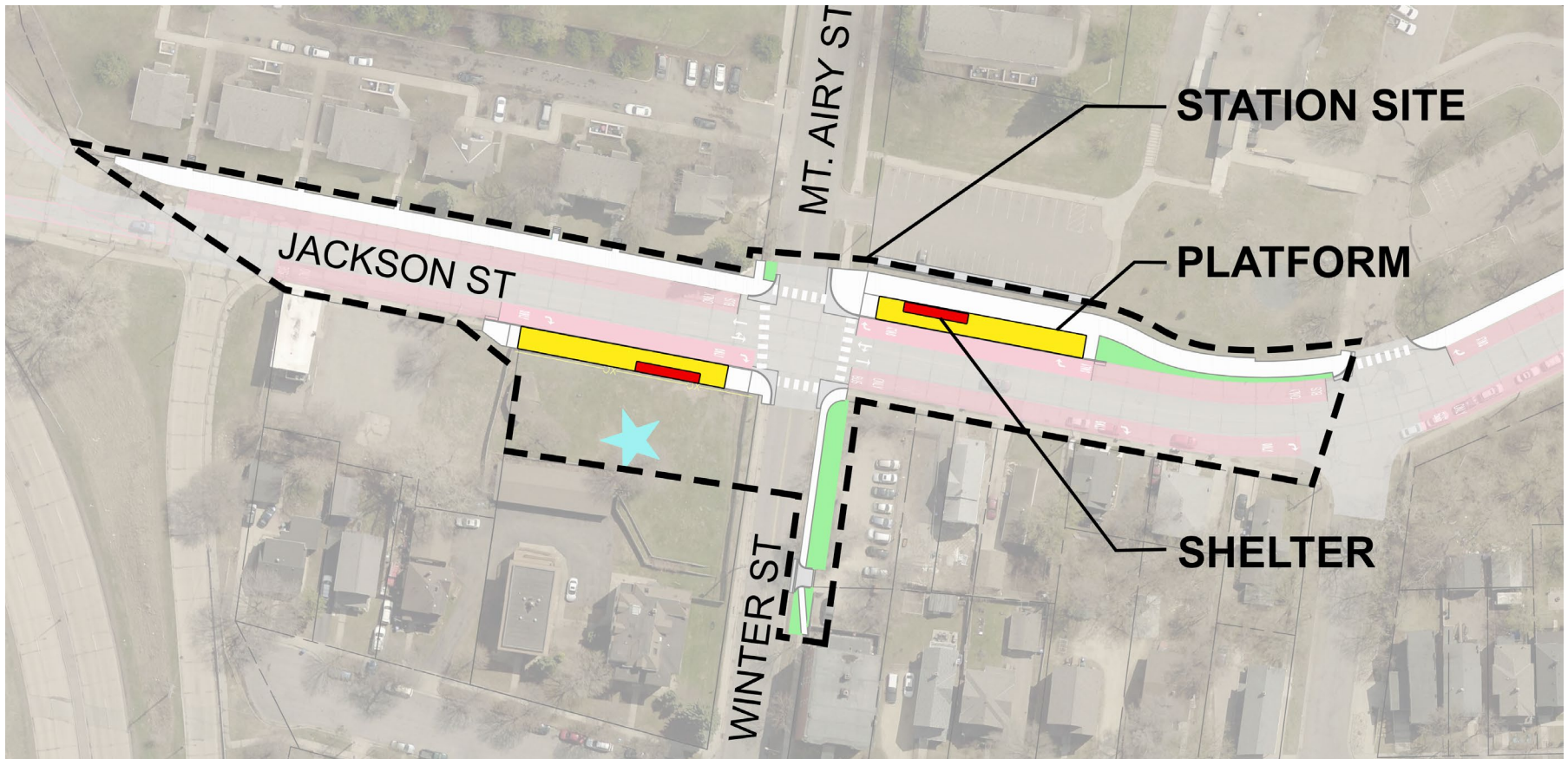


Station Design Topics

- Overview of BRT station design areas.
- Gold Line BRT station design overview.
- Online station design survey.
- Discussion.



Defining Station Design Areas



Mt. Airy Street Station – Saint Paul

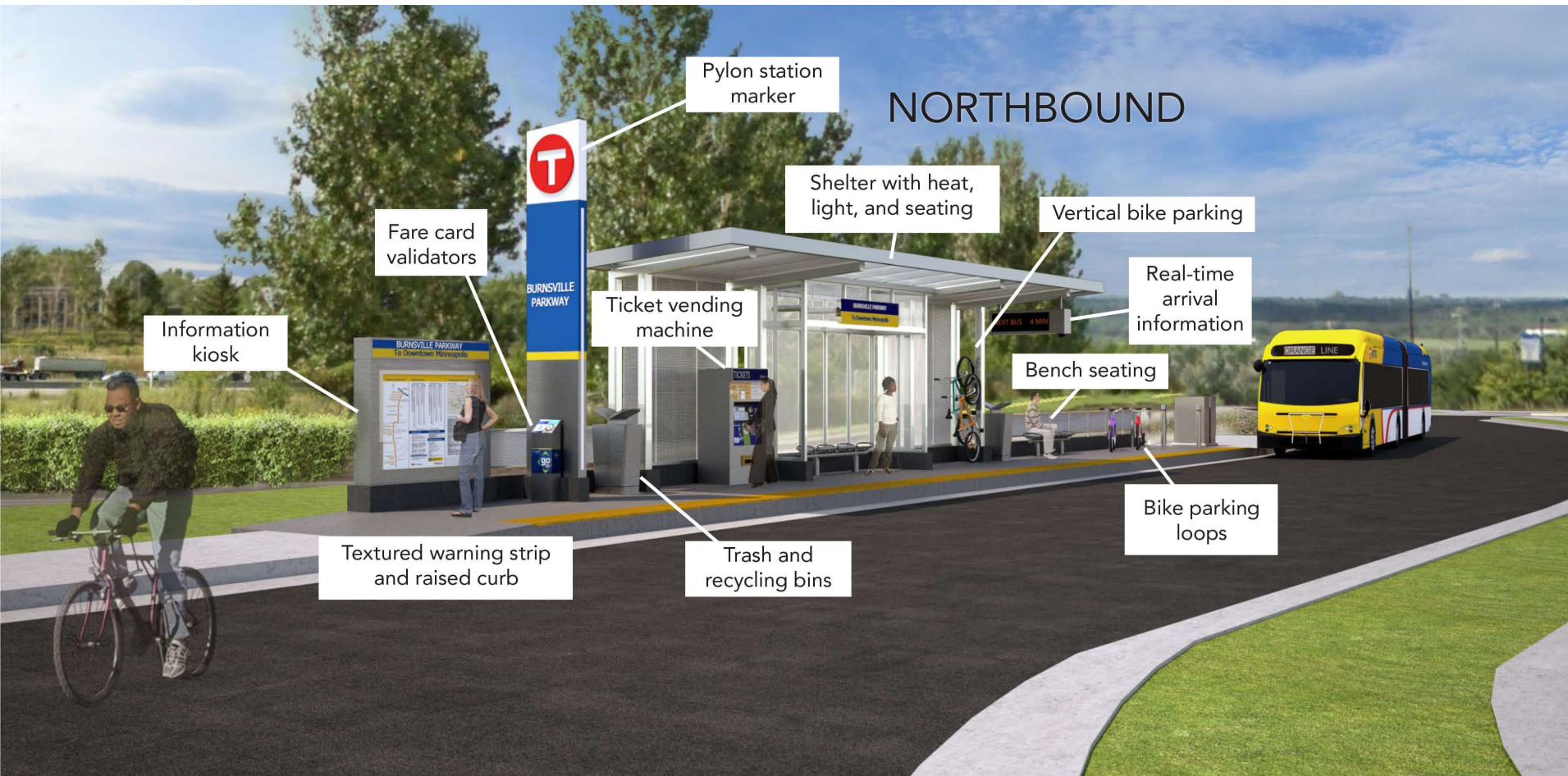
Station Site

- Broader context of station site, and includes:
 - Roadway and guideway.
 - Sidewalks and trails accessing station.
 - Lighting.
 - Landscaping.
 - Retaining walls.
 - Fencing/crossing deterrent.
 - Off-platform furnishings.
 - Stormwater facilities.

Platform

- Platform footprint / access ramps, and includes:
 - Pavement.
 - Railings.
 - Lighting.
 - Tactile edges and plates.
 - Ticket vending and validators.
 - Pylon and informational signage.
 - Bicycle parking, benches, and trash and recycling receptacles.
 - Security cameras and emergency telephone.
 - Shelter.

Platform



Shelter



A Line BRT Snelling & Hoyt Station

- Structure for customer comfort, and includes:
 - Canopy.
 - Windscreens.
 - Heating elements.
 - Seating.
 - Informational signage.

Station Design Activities

- Evaluate existing conditions of each site.
- Advance station site area design for all 21 stations:
 - Sidewalks and trails.
 - Topography as it may require walls and railings.
 - Stormwater facilities.
 - Lighting.
 - Landscaping.
- Document input received from public and Community Advisory Committee and provide to future project design team.

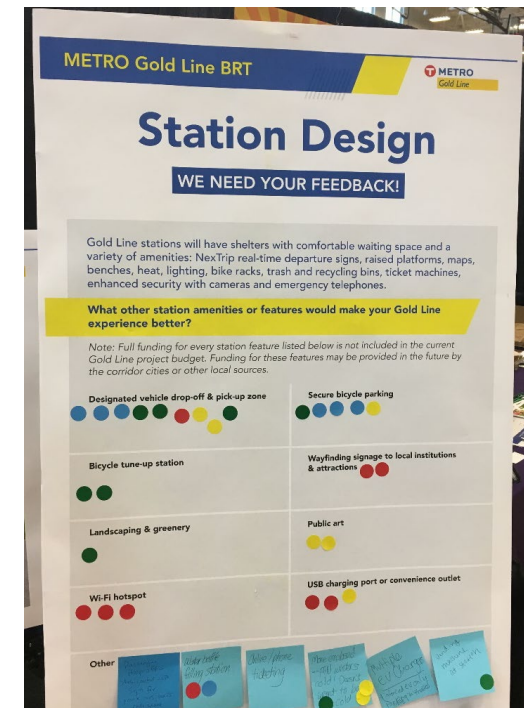
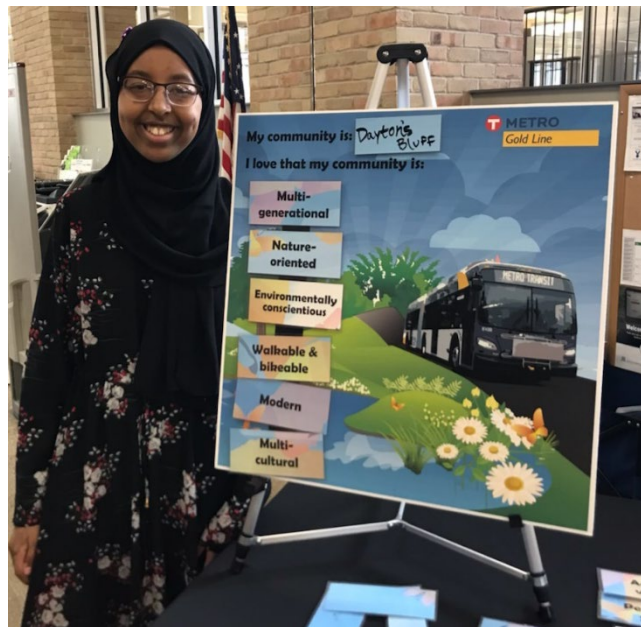


Station Design

Gold Line BRT

Station Advancement Milestones: 30 Percent

- Fall 2018: 15 percent design plans.
- Winter and spring 2019: Outreach activities.
- Spring 2019: Stakeholder workshops and BRT Platform 101.
- Winter 2020: 30 percent design plans.



Stakeholder Workshop

- Attendees:
 - Gold Line cities.
 - Ramsey and Washington County.
 - Minnesota Department of Transportation.
 - Gold Line Project staff, including Metro Transit.
- Goals:
 - Build on design work to date.
 - Review design principles.
 - Introduce BRT 101.
 - Discuss station context and character.
 - Confirm city and community priorities.
 - Guide design advancement for 30 percent and beyond.

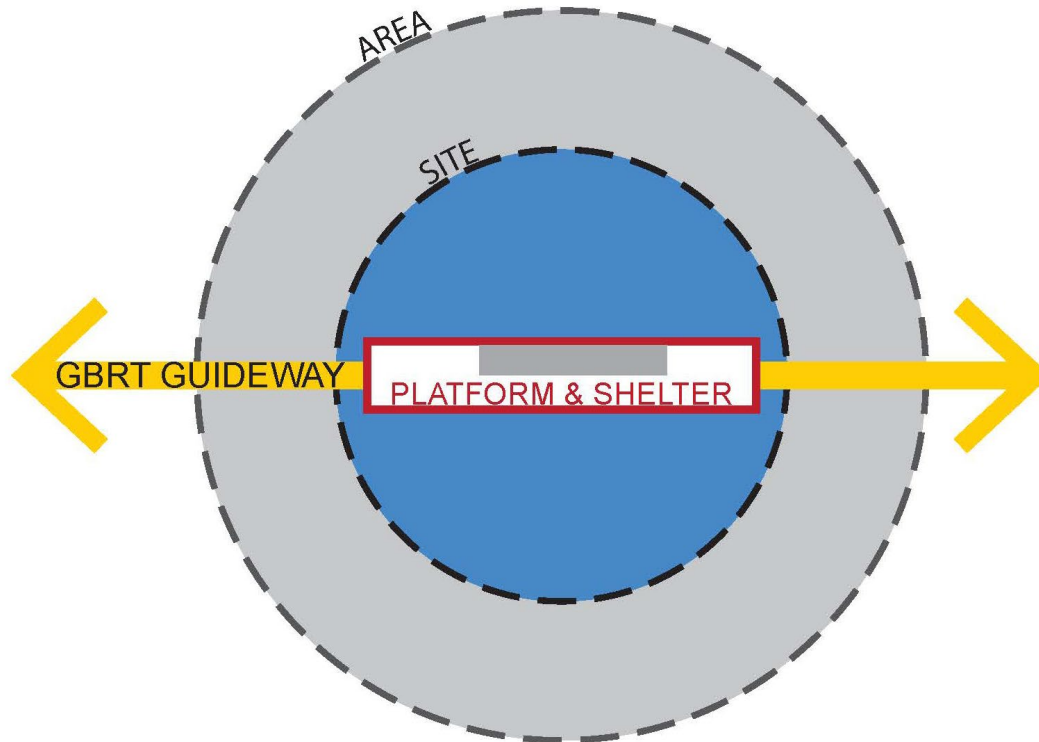


Stakeholder workshop

Design Principles

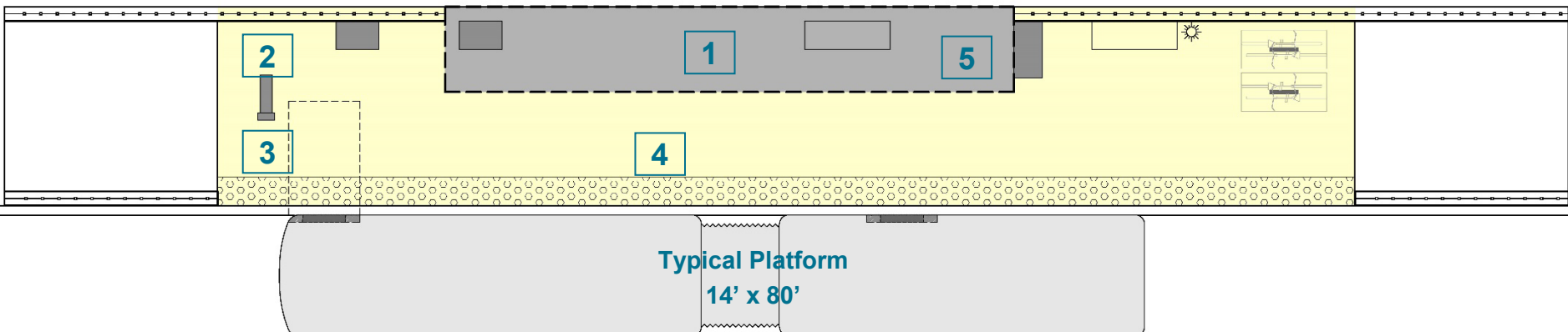
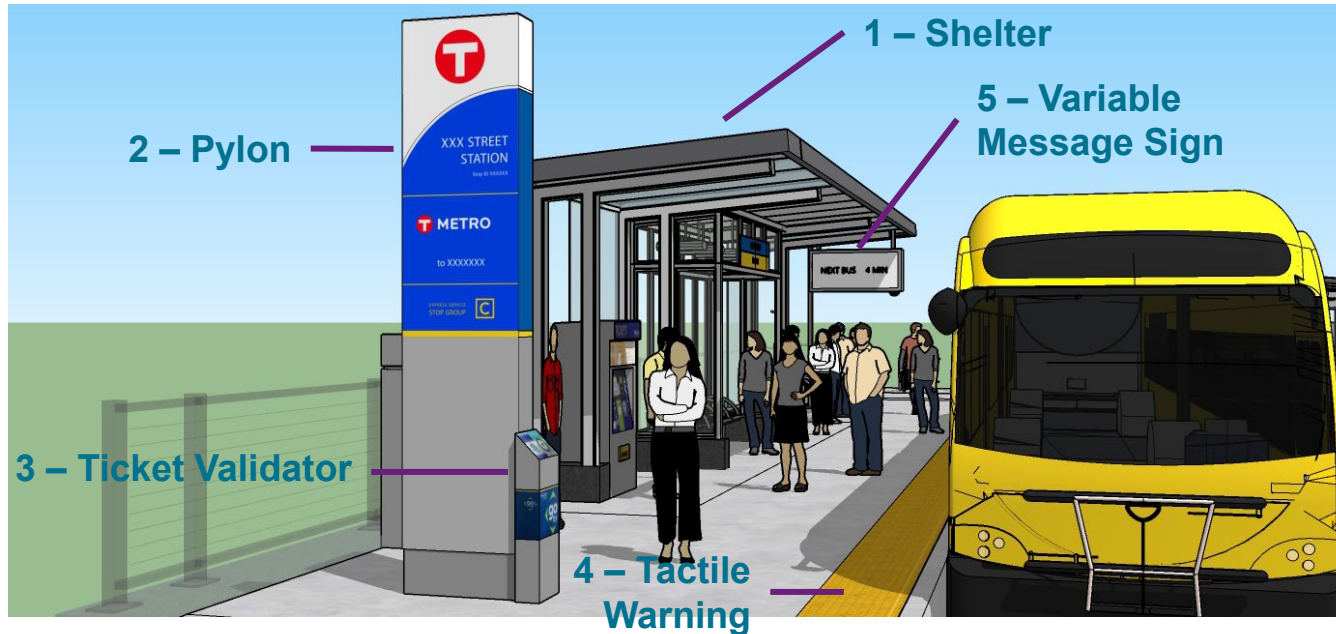
- **Identity:** consistent and recognizable Gold Line BRT.
- **Safety and comfort:** prioritize physical protection, well-lit stations and open sight lines to and from stations.
- **Connectivity:** emphasize visual and physical connections with logical pedestrian movements.
- **Context:** complement and minimize effects to natural landscape features and historical resources.
- **Resilience:** durable and maintainable materials.

BRT 101: Platform

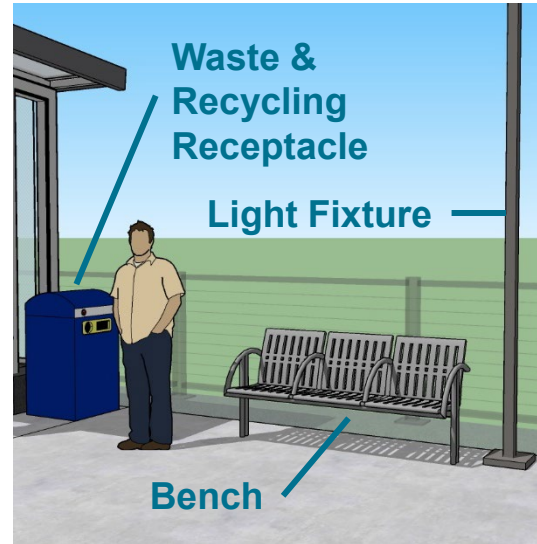
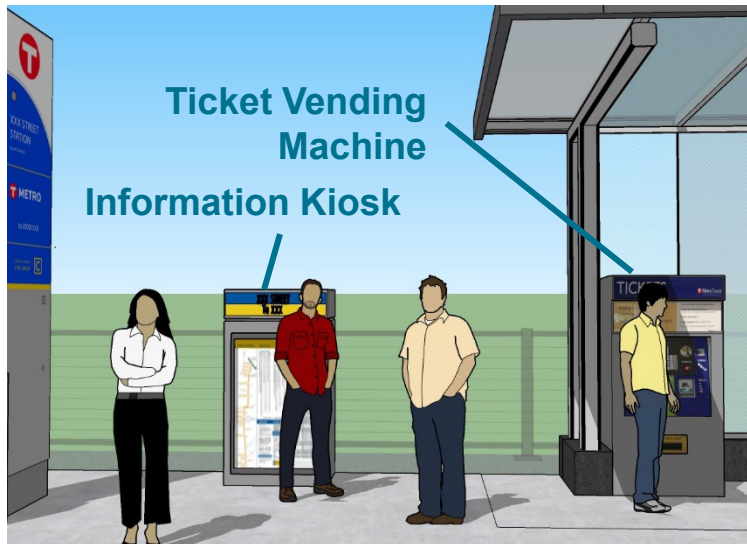


- Provide a consistent user experience from station to station.
- Metro Transit owned and maintained facilities: maintainable and sustainable passenger amenities.

BRT Platform Elements



BRT Platform Elements



Variable Message Sign
(METRO Green Line Shown)



Platform Light & Heaters
(A Line Shown)

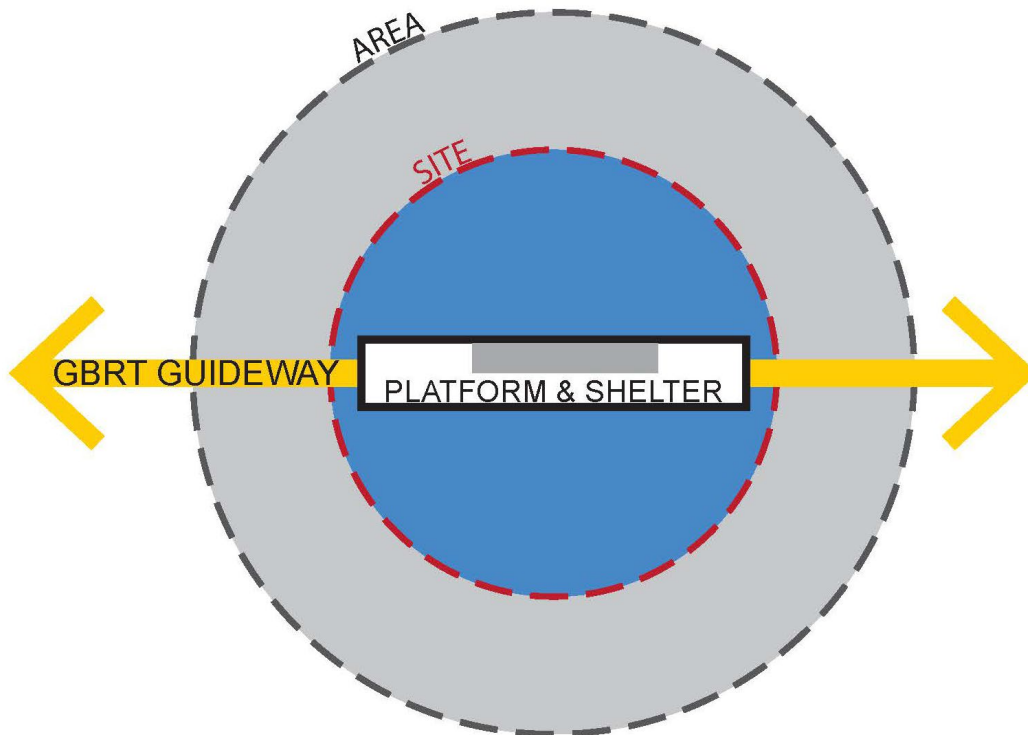


Emergency Telephone
(A Line Shown)



Security Camera
(A Line Shown)

BRT 101: Site



- Station site access.
- Sidewalk and trail connections.
- Wayfinding signage.
- Site furnishings / amenities.
- Lighting.
- Landscape.
- Park-and-rides (only certain stations).

Station Advancement Milestones: 60 Percent

- Winter 2020: Shelter concepts.
- Spring 2020: Station site design.



Shelter design for all stations

Shelter Design: 60 Percent

Wood ceiling

Minimal structure

Clean lines and emphasis on transparency

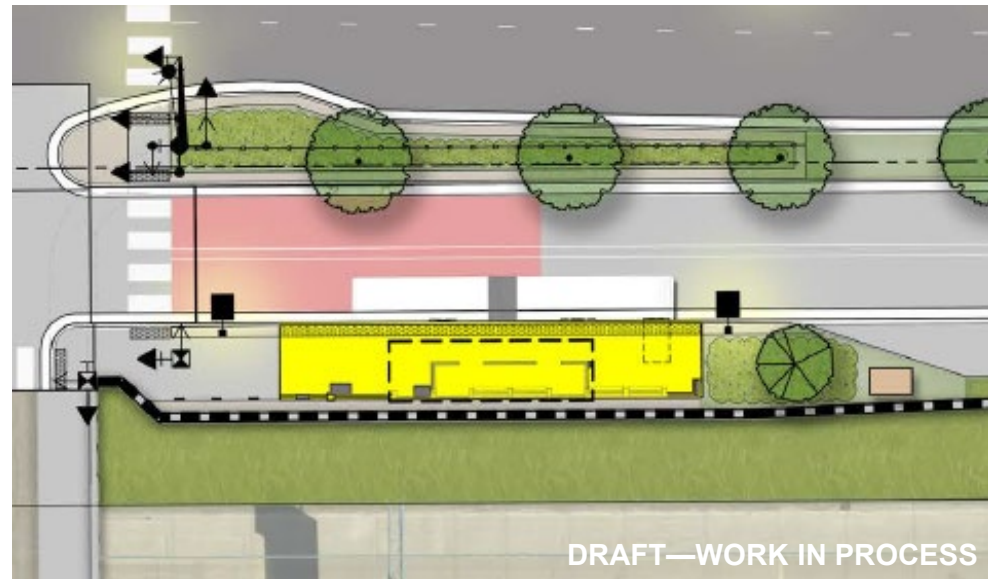
Weather screens on all four sides of shelter

Durable, easily cleaned and repairable metal finishes



Station Advancement Milestones: 60 Percent and Beyond

- Summer 2020: 60 percent plans.
- Beyond 60 percent:
 - Shelter material/color.
 - Railings/fences.
 - Platform pavement.
 - Site furnishings.
 - Platform lighting.
 - Landscape.



60 percent rendered site plans

Transit Projects and Public Art

- With the 2016 enactment of Fixing America's Surface Transportation Act (FAST Act), the creation, production and installation of public artwork is not an FTA-eligible expense.
- Gold Line BRT: Metro Transit is open to discussions with stakeholders to fund artwork design and installation with separate and external funding.

Online Station Design Survey

- Seeking input regarding:
 - How riders will access stations.
 - When riders will use Rush Line BRT.
 - Desired station amenities such as bikeshare stations and community wayfinding.
 - Ranking priorities for the stations, such as safety and design.
 - Ranking priorities for boarding, such as level boarding and offboard fare payment.
- Expected to be available online by late May.
 - Translated to Spanish, Hmong, Karen and Somali.
 - Promoted via social media and e-newsletters.



Bikeshare station (Thrive Design Studio)

Draft Community Advisory Committee Statement on Station Design

- *As the design of Rush Line BRT stations advances in future project phases, the Community Advisory Committee supports a station design process that balances these two priorities:*
 - *Community engagement that gives communities along the route the opportunity to influence station design elements so Rush Line stations reflect the communities they serve.*
 - *Sufficient design consistency across Rush Line stations to facilitate efficient transit operations and maintenance and establish a recognizable transit system brand identity along the route.*

Next Meeting

- Future agenda items.
 - Walkshed and bikeshed analysis.
 - Additional suggestions?
- A Doodle poll will be distributed for the next Community Advisory Committee in late summer 2020.



Thank you!



rushline.org



facebook.com/rushline



info@rushline.org



[@rushlinetransit](https://twitter.com/rushlinetransit)



651-266-2760