



# **PUBLIC ENGAGEMENT SUMMARY**

MARCH TO SEPTEMBER 2018

# TABLE OF CONTENTS

|  |           |
|--|-----------|
| <b>INTRODUCTION: RUSH LINE BRT PROJECT PUBLIC ENGAGEMENT.....</b>            | <b>2</b>  |
| Approach to Public Engagement.....   | 2         |
| Decision-Making Process.....   | 3         |
| Public Engagement Events and Activities, March-September 2018.....           | 4         |
| <b>WHAT HAS THE PUBLIC SAID ABOUT THE RUSH LINE BRT PROJECT SO FAR?.....</b> | <b>6</b>  |
| Input Summary.....   | 6         |
| How Is Input Being Used to Shape the Project?.....                           | 7         |
| What's Next?.....  | 9         |
| <b>APPENDIX A.....</b>   | <b>10</b> |
| <b>APPENDIX B.....</b>   | <b>16</b> |

## LIST OF TABLES

|  |    |
|--|----|
| Table 1: Public Engagement Activities Completed March-September 2018.....                    | 10 |
| Table 2: Comments and Themes Regarding Usefulness and Value of the Rush Line BRT Project.... | 16 |

## LIST OF FIGURES

|  |   |
|--|---|
| Figure 1: Environmental Analysis Phase Advisory Committees and Working Groups..... | 3 |
| Figure 2: Public Engagement Events, March-September 2018.....                      | 5 |
| Figure 3: Attitudes Towards the Rush Line BRT Project.....                         | 6 |
| Figure 4: Attitudes Towards Each Aspect of the Rush Line BRT Project.....          | 7 |

# INTRODUCTION: RUSH LINE BRT PROJECT PUBLIC ENGAGEMENT

The Rush Line Bus Rapid Transit (BRT) Project is a proposed 14-mile transit route connecting Union Depot in Saint Paul to the east side of Saint Paul and the communities of Maplewood, White Bear Township, Vadnais Heights, Gem Lake and White Bear Lake. The Rush Line BRT Project is led by the Ramsey County Regional Railroad Authority.

In early 2018 the Rush Line BRT Project entered the environmental analysis phase. This phase is expected to last through the beginning of 2020. The purpose of the environmental analysis phase is to advance the project's design while seeking to maximize the potential benefits of the project and minimize potential social and environmental impacts along the route. During this phase, an Environmental Assessment will be completed. A significant component of these tasks is engaging with the communities in the corridor to learn about their priorities for the project.



**Children pose with the Rush Line BRT bus at Vadnais Heights's Party in the Park on June 19.**

Public engagement efforts in this phase will build on the public engagement work conducted throughout the previous phase of the project, which involved extensive public engagement that led to the adoption of the locally preferred alternative. To this end, the Rush Line BRT Project team created a Communication and Public Engagement Plan to guide and prioritize public engagement efforts throughout the environmental analysis phase. This plan described the diverse communities throughout the corridor, identified methods for engaging with these communities and established goals for public engagement during the environmental analysis phase. The three goals are to inform a diverse public, collect input from the diverse public and use this public input to shape the project.

The public engagement conducted from March through September 2018 will help to define the Rush Line BRT Project definition that will be studied in the Environmental Assessment.

## APPROACH TO PUBLIC ENGAGEMENT

To achieve the three public engagement goals set out in the Communication and Public Engagement Plan, the project team first identified the diverse communities to engage:

- Among people living in Saint Paul and in Maplewood.
- Latino people living in Saint Paul.
- Karen people.
- People of color.
- Public housing residents.
- Transit users.

- People with disabilities.
- Seniors.
- Residents of each community along the corridor.
- Employees in each community along the corridor.

The project team has engaged the public using traditional methods as well as methods that are tailored to each unique group listed above. The project team has sought to attend in-person activities and events that present opportunities to connect with underrepresented communities living and working along the corridor. Underrepresented communities are those whose input has been disproportionately unheard in public decision-making, including people of color, people with disabilities and people with low incomes. The project team prioritized which events to attend using the following criteria:

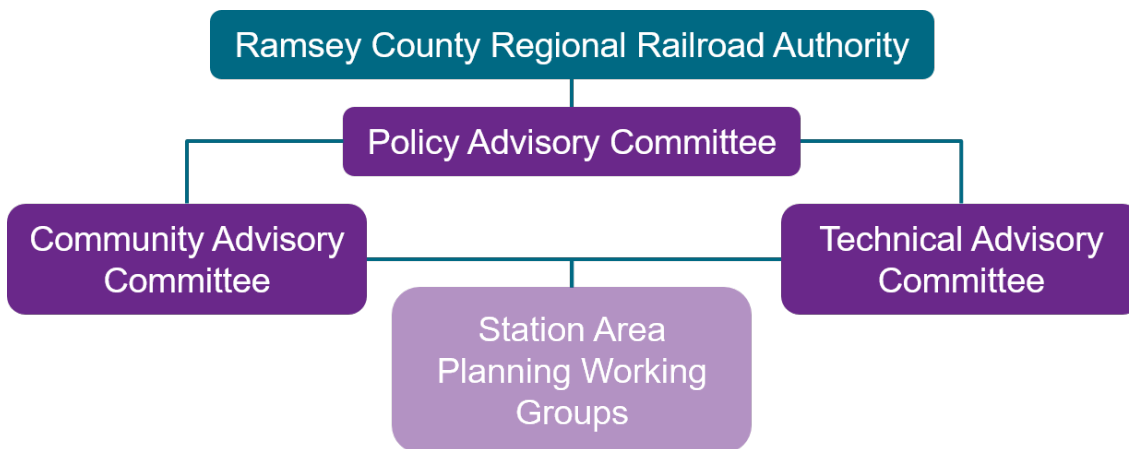
- Equity.
- Inclusivity.
- Maximizing voices heard.
- Geographic representation.

There are many community events throughout the summer in Minnesota, and the project team has focused on participating in these events rather than organizing original events to reach as many people as possible while using resources effectively. The project team tracks each public engagement event and characteristics of the attendees, then uses this information to determine where future public engagement efforts should be directed. The project team has aimed to reach targeted audiences in formats and venues that enable participants to engage in discussions, learn about the project and provide input in a comfortable and accessible setting. To seek out these audiences, the project team uses cultural and, when needed, linguistic ambassadors.

## DECISION-MAKING PROCESS

The decision-making process is led by the following groups that are informed by input gathered from public engagement efforts.

**Figure 1: Environmental Analysis Phase Advisory Committees and Working Groups**



The Policy Advisory Committee consists of elected and appointed officials from communities in the Rush Line BRT Project area and key partner agencies. The Policy Advisory Committee provides the overall direction and guidance for the project and meets every other month. All Policy Advisory Committee meetings allow for public comment. The Policy Advisory Committee provides recommendations to the Ramsey County Regional Railroad Authority Board on project decisions using input and findings from other committees and working groups.

The Technical Advisory Committee, comprised of planning and public works staff from Rush Line BRT Project area communities and other agencies, provides technical input on issues including design, environmental analysis, engineering, construction and operation of the Rush Line BRT Project. Technical Advisory Committee members review technical documents and make recommendations to the Policy Advisory Committee.

The Community Advisory Committee advises the Rush Line BRT Project team and Policy Advisory Committee on key project design, station area planning, environmental analysis and operational plan decisions from a community and business perspective. The Community Advisory Committee, which meets approximately quarterly, consists of people who live and work along the Rush Line BRT route. The Community Advisory Committee meets quarterly.

Station area planning working groups were assembled in consultation with cities and are composed of area residents, business people and elected and appointed officials. These working groups meet as needed to discuss station area plans for the stations in their communities. During spring and summer 2018 the station area planning working groups have focused on recommending locations for station platforms, opportunities for transit-oriented development and potential infrastructure investments that would improve access to stations.

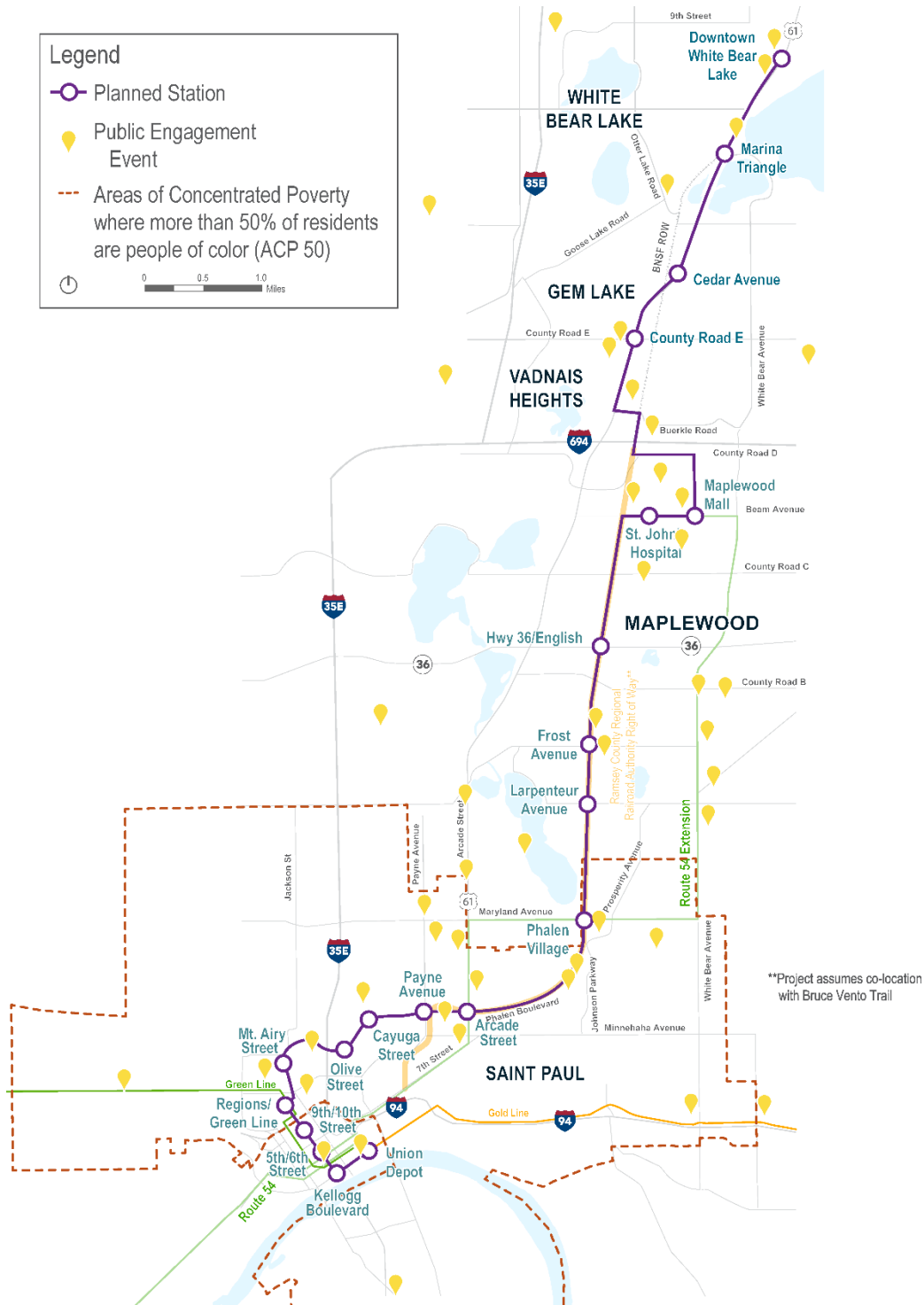
## PUBLIC ENGAGEMENT EVENTS AND ACTIVITIES, MARCH-SEPTEMBER 2018

From the start of public engagement activities in March 2018 through September 2018, the Rush Line BRT Project team conducted or staffed 87 events throughout the project area. The project team has intentionally focused on engaging neighborhoods with high proportions of traditionally underrepresented communities. These activities have ranged from casual “walk-and-engage” efforts in which staff members have walked around neighborhoods to talk to residents and visitors to pop-up meetings throughout the community and structured meetings with targeted audiences. The locations of these meetings are depicted in Figure 2 and brief descriptions of each can be found in Table 1 in Appendix A.



**Community Advisory Committee members identify areas for potential public engagement efforts during the first meeting of the Community Advisory Committee on July 12.**

**Figure 2: Public Engagement Events, March-September 2018**



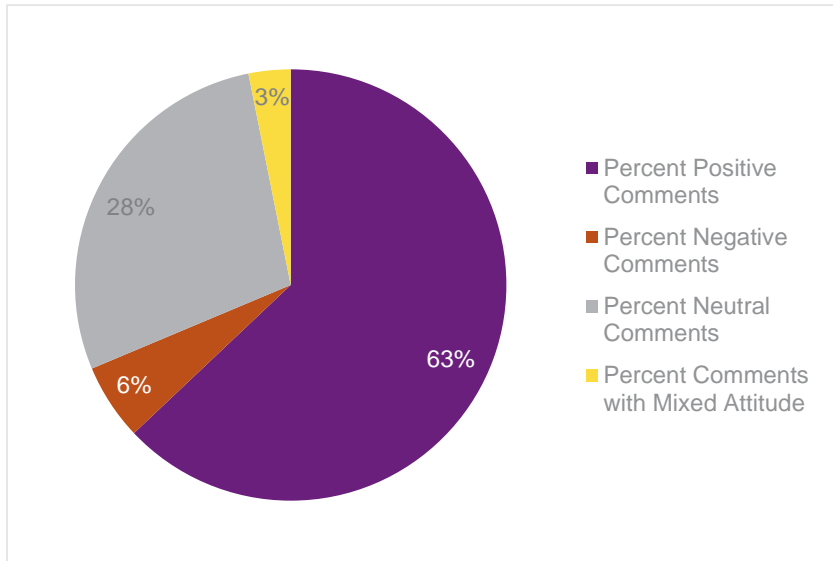


# WHAT HAS THE PUBLIC SAID ABOUT THE RUSH LINE BRT PROJECT SO FAR?

## INPUT SUMMARY

Throughout the first 87 public engagement events, the Rush Line BRT Project team engaged with more than 1,300 community members, business owners and other stakeholders and recorded over 700 comments. The project team spoke with people about station areas, BRT guideway placement and various other characteristics of the project. Feedback during this period was predominantly positive as most people expressed that they felt Rush Line BRT would be a useful and important transit investment for the East Metro, though a few commenters have strongly voiced their opposition to the project. At many meetings throughout the corridor, the project team spoke with people who had not previously been aware of the project and informed them about it. General attitudes towards the Rush Line BRT Project expressed in each comment received can be found in Figure 3.

**Figure 3: Attitudes Towards the Rush Line BRT Project**



The main themes that emerged during the initial public engagement effort are as follows:

- Support from current transit users and non-transit users alike.
- Usefulness and value to residents, employees and visitors of the corridor.
- Accessibility of the Rush Line BRT for people with disabilities and elderly people.
- Connectivity to stations by bus, walking and biking in Saint Paul neighborhoods and suburban communities.

Additionally, employers have expressed interest in improved transit to attract and retain employees, and Saint Paul district councils in the corridor see the need to enhance transit options in their neighborhoods. The distribution of these comments, sorted by broad category, can be found in Figure 4. Most comments regarding the usefulness of BRT were supportive and many people stated that they were excited to take the Rush Line to new-to-them parts of Saint Paul and surrounding cities, or that they felt many people would have better access to transportation because of the Rush Line. Those who made comments regarding accessibility of the project were primarily interested in how seniors and people with disabilities would be able to access stations, board the bus and be safe and comfortable on the bus. Input regarding connectivity with the existing transit network was predominantly positive, though a few people expressed concern that other routes could experience service reductions after the Rush Line is opened, and others stated that local or BRT service should extend even farther north than White Bear Lake. Miscellaneous positive comments include one

parent's excitement to teach their children how to ride transit and another parent's gratefulness that their son who has a disability will have a new way to get around on his own.

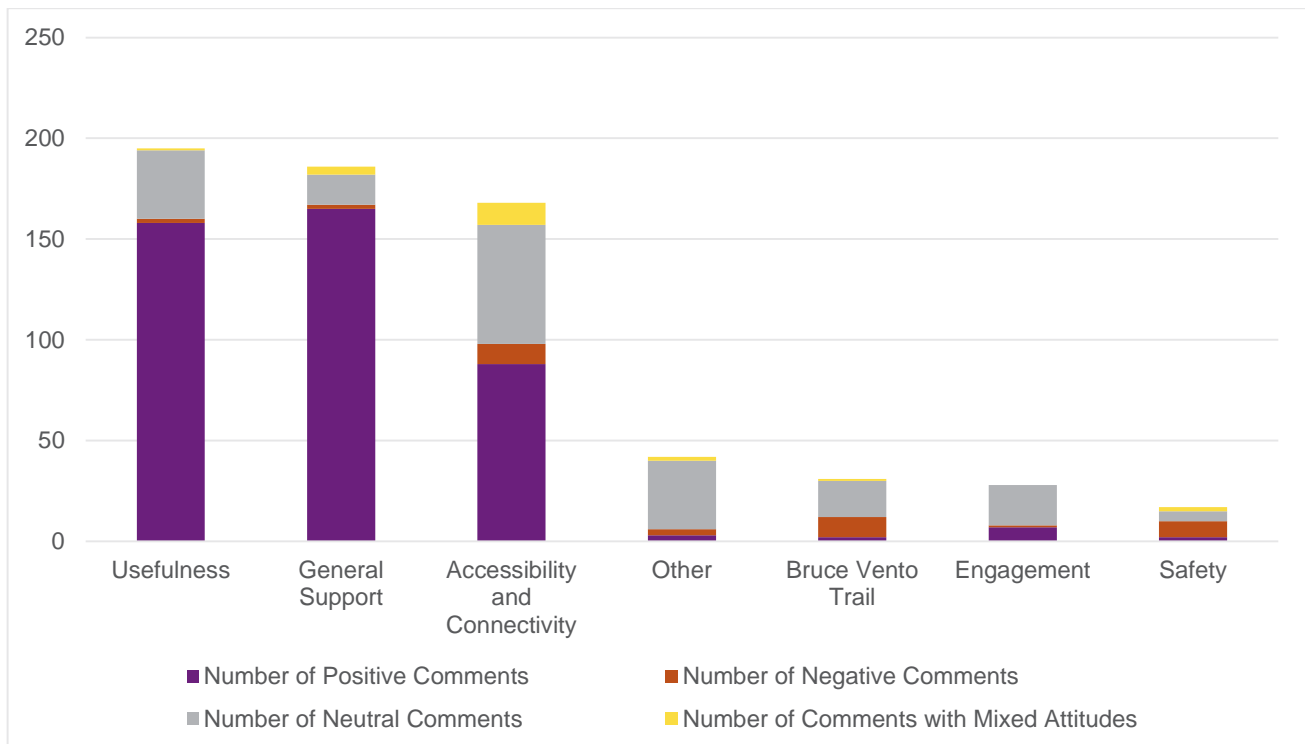
Notable topics of interest have been:

- Changes to the Bruce Vento Trail.
- Safety.
- Public engagement events.
- Vehicle features.

People who have provided input on the Bruce Vento Trail have stated that they are concerned about the preservation of this community asset. Several people have asked about safety in the corridor and on the buses themselves. These people are interested in pedestrian and cyclist safety along the Bruce Vento Trail and near Highway 61 in White Bear Lake in particular, though Arcade Street in Saint Paul has also been brought up as an area of concern. A few people have stated that they are worried about safety and crime on the bus and at stations. Numerous people have said it is important to them that public engagement activities work towards building relationships with communities in the corridor. Some people have asked for specifics on the buses that will be used, including fuel type, capacity for passengers who use wheelchairs and storage for bicycles. Several people have expressed a preference for electric vehicles versus diesel or diesel-electric hybrid vehicles.

Some topics, such as the project's usefulness and value to the community, received overwhelmingly positive feedback, while others received slightly less enthusiastic responses. The distribution of attitudes regarding each aspect of the project can be found in Figure 4. Examples of comments in the top categories can be found in Appendix B.

**Figure 4: Attitudes Towards Each Aspect of the Rush Line BRT Project**





## HOW IS INPUT BEING USED TO SHAPE THE PROJECT?

Public input has been used to inform key aspects of the environmental analysis phase such as station area planning, corridor design, environmental analysis and the health impact evaluation. This includes recommendations such as the potential location of the Arcade Street and downtown White Bear Lake stations and the design of the Bruce Vento Trail. In later phases of the project, public input will influence elements including vehicle specifications and station amenities.

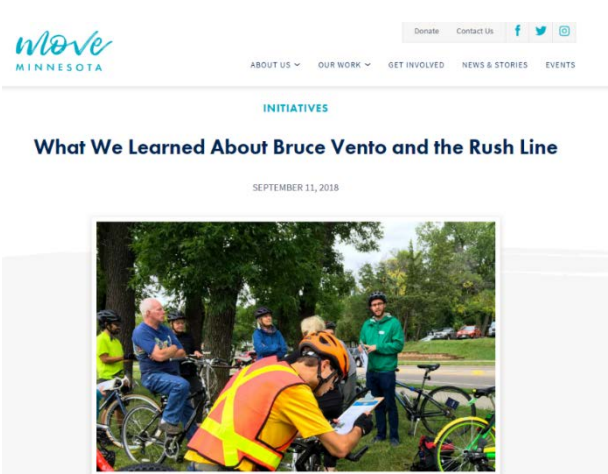
A primary focus of public engagement between March and September of 2018 was station area planning. The project team divided the corridor into segments to seek input specific to each area, coordinated working groups and stakeholder meetings, and gathered feedback through various types of in-person meetings as well as online.

The project team has sought input on a variety of aspects of station area planning, including:

- Locating station platforms to best serve transit users and the surrounding neighborhood.
- Maintaining cultural, historic and natural resources within the project area.
- How communities along the route will benefit from this investment.
- How BRT will operate alongside people walking, rolling, biking and driving.
- What kind of development and pedestrian, bicycle and transit connections are at and near stations.



**Members of the Rush Line BRT Project team speak to Bruce Vento Trail users about future co-location of the trail and the BRT guideway during a pop-up on July 25.**



**[Move Minnesota blog post about the Bruce Vento Trail ride, posted September 11.](#)**

Public input has led to the consideration of new stations at Cook Avenue and Buerkle Road to provide better access to neighborhood and employment destinations including Hmong Village and Grandma's Bakery, respectively. Additionally, there is consideration of a change in the route to provide better access to the Maplewood Mall Transit Center and St. John's Hospital and routing adjustments in downtown Saint Paul to make use of existing bus-only lanes on 5<sup>th</sup> and 6<sup>th</sup> Streets.

During the first part of the environmental analysis phase, the project team also sought and gathered input on the design of the Bruce Vento Trail and BRT guideway within the Ramsey County Regional Railroad Authority right-of-way. The project team facilitated two pop-up meetings on the Bruce Vento Trail and attended a bike ride hosted by Move Minnesota.

## WHAT'S NEXT?



**Members of the Maplewood Station Area Planning Working Group examine an aerial photo of a future station area during a May 22 meeting.**

Public engagement will continue throughout the environmental analysis phase. In the fall of 2018, the project team will release an interactive online map to collect input online on issues like potential environmental impacts, safety of guideway crossings and bicycle and pedestrian access to stations. The project team will also continue to participate in community events, hold public meetings and reach out to traditionally underrepresented communities through walk-and-engage events and small gatherings. This public engagement will seek to continue gathering input regarding station area planning and guideway design and will be used to inform the Environmental Assessment.

# APPENDIX A

**Table 1: Public Engagement Activities Completed March-September 2018**

| Date           | Activity Name  | Location                                  | Type of Activity                    | Approximate Number of Contacts |
|----------------|--|---|-------------------------------------|--------------------------------|
| March 29, 2018 | Policy Advisory Committee Meeting #1                     | Ramsey County Environmental Health Office | Policy Advisory Committee           | 16                             |
| April 10, 2018 | Presentation to District 17 Development Review Committee | District 17 Capitol River Council         | Presentation to Stakeholder         | 8                              |
| April 17, 2018 | White Bear Lake Station Area Planning Working Group #1   | Boatworks                                 | Station Area Planning Working Group | 12                             |
| April 17, 2018 | White Bear Lake Stakeholder Meeting                      | Boatworks                                 | Targeted Event                      | 10                             |
| April 18, 2018 | Saint Paul Station Area Planning Working Group           | Saint Paul City Hall Annex                | Station Area Planning Working Group | 6                              |
| April 18, 2018 | Vadnais Heights Station Area Planning Working Group #1   | People's Bank Midwest                     | Station Area Planning Working Group | 7                              |
| April 19, 2018 | Maplewood Station Area Planning Working Group #1         | Maplewood Public Works                    | Station Area Planning Working Group | 6                              |
| April 29, 2018 | Northeast Metro Community Expo                           | White Bear High School South Campus       | Community Event                     | 50                             |
| May 4, 2018    | Station Area Planning I – Downtown White Bear Lake       | Downtown White Bear Lake                  | Pop-Up                              | 14                             |
| May 5, 2018    | Cinco de Mayo  | Saint Paul West Side                      | Community Event                     | 70                             |
| May 5, 2018    | Union Depot Train Day                                    | Union Depot                               | Community Event                     | 100                            |
| May 7, 2018    | Frogtown Neighborhood Association Board Meeting          | Kings Crossing                            | Presentation to Stakeholder         | 6                              |

| Date         | Activity Name  | Location                               | Type of Activity                    | Approximate Number of Contacts |
|--------------|--|--|-------------------------------------|--------------------------------|
| May 17, 2018 | Presentation to Residents of RealLife Cooperative of Phalen Village              | RealLife Cooperative of Phalen Village | Presentation to Stakeholder         | 5                              |
| May 18, 2018 | Bike to Work Week Celebration  | Union Depot                            | Community Event                     | 10                             |
| May 18, 2018 | Mt. Airy Homes Spring Event  | Mt. Airy Homes                         | Community Event                     | 39                             |
| May 19, 2018 | State of Our City Summit   | Johnson High School                    | Listening Session                   | 5                              |
| May 19, 2018 | Station Area Planning I – Phalen Village Station                                 | Hmong Village                          | Walk-and-Engage                     | 31                             |
| May 20, 2018 | Station Area Planning I – Mt. Airy   | Mt. Airy Homes                         | Walk-and-Engage                     | 7                              |
| May 21, 2018 | Johnson High School Leadership Class   | Johnson High School                    | Targeted Event                      | 45                             |
| May 22, 2018 | Maplewood Station Area Planning Working Group #2                                 | Maplewood Fire Station                 | Station Area Planning Working Group | 15                             |
| May 22, 2018 | Stakeholder Meeting: Frost Avenue Station  | Legacy Funeral Home                    | Targeted Event                      | 1                              |
| May 22, 2018 | Stakeholder Meeting: Frost Avenue Station  | Sherman & Associates                   | Targeted Event                      | 1                              |
| May 22, 2018 | Stakeholder Meeting: Maplewood Mall Station                                      | Maplewood Mall                         | Targeted Event                      | 1                              |
| May 22, 2018 | Stakeholder Meeting: St. John's Hospital Station                                 | HealthEast                             | Targeted Event                      | 2                              |
| May 22, 2018 | Vadnais Heights Economic Development Corporation Meeting – County Road E Station | Buerkle Honda                          | Presentation to Stakeholder         | 1                              |
| May 22, 2018 | Vadnais Heights Station Area Planning Working Group #2                           | Buerkle Honda                          | Station Area Planning Working Group | 17                             |
| May 23, 2018 | Station Area Planning Group #1   | RealLife Cooperative of Phalen Village | Station Area Planning Working Group | 11                             |

| Date          | Activity Name   | Location   | Type of Activity                    | Approximate Number of Contacts |
|---------------|---|--|-------------------------------------|--------------------------------|
| May 31, 2018  | Policy Advisory Committee Meeting #2                          | Maplewood Community Center                           | Policy Advisory Committee           | 13                             |
| June 2, 2018  | WaterFest   | Phalen Regional Park                                 | Community Event                     | 5                              |
| June 7, 2018  | Presentation to Capitol Area Architecture and Planning Board  | Capitol Area Architectural and Planning Board Office | Presentation to Stakeholder         | 3                              |
| June 7, 2018  | Walk-and-Engage with Mt. Airy Hi-Rise Residents               | Mt. Airy Homes                                       | Pop-Up                              | 4                              |
| June 13, 2018 | Presentation to Peoples Bank                                  | Peoples Bank Midwest                                 | Presentation to Stakeholder         | 3                              |
| June 19, 2018 | Party in the Park   | Berwood Park   | Community Event                     | 30                             |
| June 16, 2018 | Informational Fun Walk & Ride                                 | Maplewood Fire Station                               | Open House                          | 8                              |
| June 20, 2018 | XChange: Career Fair  | Merrick Community Services                           | Pop-Up                              | 30                             |
| June 20, 2018 | District 2 Board Meeting                                      | National Association of Letter Carriers Office       | Presentation to Stakeholder         | 30                             |
| June 26, 2018 | District 5 Payne-Phalen Monthly Meeting                       | Arlington Hills Community Center                     | Presentation to Stakeholder         | 25                             |
| June 27, 2018 | Stakeholder Meeting: Phalen Village Station                   | Saint Paul City Hall Annex                           | Targeted Event                      | 2                              |
| June 27, 2018 | Stakeholder Meeting: Phalen Village and Payne/Arcade Stations | East Side Enterprise Center                          | Targeted Event                      | 2                              |
| June 27, 2018 | Stakeholder Meeting: Phalen Village Station                   | Mt. Airy Homes                                       | Targeted Event                      | 3                              |
| June 27, 2018 | White Bear Lake Station Area Planning Working Group #2        | White Bear Lake City Hall                            | Station Area Planning Working Group | 10                             |
| June 28, 2018 | Stakeholder Meeting: Arcade Street Station                    | Black Dog Cafe                                       | Targeted Event                      | 1                              |
| June 28, 2018 | Stakeholder Meeting: Phalen Village Station                   | Hmong Village  | Targeted Event                      | 1                              |

| Date          | Activity Name   | Location                            | Type of Activity                    | Approximate Number of Contacts |
|---------------|---|-------------------------------------|-------------------------------------|--------------------------------|
| June 28, 2018 | Stakeholder Meeting: Phalen Village Station                         | Cub Foods – Arcade Street           | Targeted Event                      | 1                              |
| June 28, 2018 | Payne Avenue & Arcade Street Station Area Planning Working Group #1 | Arlington Hills Community Center    | Station Area Planning Working Group | 8                              |
| June 28, 2018 | Stakeholder Meeting: Marina Triangle                                | Kowalski's Markets, Marina Triangle | Targeted Event                      | 1                              |
| June 28, 2018 | Maplewood and Saint Paul Area Chamber of Commerce                   | Maplewood Community Center          | Targeted Event                      | 10                             |
| June 28, 2018 | Meeting with BNSF Railway and Minnesota Commercial Railway          | BNSF Office, Fridley                | Presentation to Stakeholder         | 2                              |
| July 10, 2018 | Route 54 Ribbon Cutting   | East Side Enterprise Center         | Community Event                     | 5                              |
| July 10, 2018 | Gold Line Targeted Meeting  | East Side Community Center          | Targeted Event                      | 2                              |
| July 11, 2018 | Roosevelt Homes Walking Event                                       | Mt. Airy Homes                      | Community Event                     | 7                              |
| July 12, 2018 | Community Advisory Committee Meeting #1                             | East Side Enterprise Center         | Community Advisory Committee        | 30                             |
| July 14, 2018 | Dragon Festival   | Phalen Regional Park                | Community Event                     | 42                             |
| July 14, 2018 | Ramsey County Fair  | 2020 White Bear Ave                 | Community Event                     | 25                             |
| July 17, 2018 | Gold Line Open House  | Grace Lutheran Church               | Open House                          | 1                              |
| July 24, 2018 | Gold Line Targeted Meeting  | Sun Ray Culver's                    | Targeted Event                      | 2                              |
| July 25, 2018 | Bruce Vento Trail Pop-Up  | Bruce Vento Trail                   | Pop-Up                              | 25                             |
| July 26, 2018 | Environmental Resource Expo at MarketFest                           | Downtown White Bear Lake            | Community Event                     | 35                             |
| July 26, 2018 | Political Advisory Committee Meeting #3                             | Hiway Federal Credit Union          | Political Advisory Committee        | 16                             |
| July 27, 2018 | Stakeholder Meeting: Bamboo Hut and Maplewood Mall                  | Bamboo Hut                          | Presentation to Stakeholder         | 3                              |



| Date            | Activity Name   | Location                          | Type of Activity                    | Approximate Number of Contacts |
|-----------------|---|-----------------------------------|-------------------------------------|--------------------------------|
| July 30, 2018   | Stakeholder Meeting: Move Minnesota   | Move Minnesota Office             | Presentation to Stakeholder         | 3                              |
| July 31, 2018   | Stakeholder Meeting: Gillette and Regions                                     | Gillette Children's Hospital      | Targeted Event                      | 5                              |
| July 31, 2018   | Gold Line Neighborhood Meeting  | East Side Enterprise Center       | Targeted Event                      | 1                              |
| July 31, 2018   | Maplewood Station Area Planning Working Group #3                              | First Evangelical Church          | Station Area Planning Working Group | 8                              |
| August 2, 2018  | Stakeholder Meeting: Kowalski's and White Bear Shopping Center                | White Bear Shopping Center        | Presentation to Stakeholder         | 5                              |
| August 7, 2018  | National Night Out: Roosevelt Homes   | Roosevelt Homes                   | Community Event                     | 18                             |
| August 7, 2018  | National Night Out: Hmong American Partnership                                | Hmong American Partnership        | Community Event                     | 27                             |
| August 9, 2018  | Stakeholder Meeting: Buerkle Hyundai  | Buerkle Hyundai                   | Presentation to Stakeholder         | 5                              |
| August 14, 2018 | White Bear Lake Station Area Planning Working Group #3                        | White Bear Lake City Hall         | Station Area Planning Working Group | 8                              |
| August 16, 2018 | Midwest Special Services Block Party  | Midwest Special Services          | Community Event                     | 24                             |
| August 16, 2018 | Clean Fleets for Healthy Neighborhoods  | East Side Freedom Library         | Community Event                     | 17                             |
| August 16, 2018 | Payne Avenue, Arcade Street and Phalen Village Station Area Planning Group #2 | Hmong Village                     | Station Area Planning Working Group | 11                             |
| August 18, 2018 | Fiesta Latina   | CLUES                             | Community Event                     | 51                             |
| August 19, 2018 | Vadnais Heights Heritage Days   | Community Park                    | Community Event                     | 20                             |
| August 21, 2018 | North End Study Kickoff   | Ramsey County Library – Maplewood | Community Event                     | 30                             |



| <b>Date</b>        | <b>Activity Name</b>                               | <b>Location</b>             | <b>Type of Activity</b>      | <b>Approximate Number of Contacts</b> |
|--------------------|--|-----------------------------|------------------------------|---------------------------------------|
| August 22, 2018    | End of Summer Celebration                          | Edgerton Park               | Community Event              | 25                                    |
| August 28, 2018    | Women on Bikes Bruce Vento Trail Ride              | Bruce Vento Trail           | Community Event              | 12                                    |
| August 30, 2018    | Stakeholder Meeting: Cummins Sales and Service     | Cummins Sales and Service   | Presentation to Stakeholder  | 2                                     |
| September 8, 2018  | White Bear Lake Township Day                       | Polar Lakes Park            | Community Event              | 45                                    |
| September 12, 2018 | Stakeholder Meeting: Vadnais Sports Center Tenants | Vadnais Sports Center       | Presentation to Stakeholder  | 10                                    |
| September 17, 2018 | Lower Phalen Creek Project Meeting                 | East Side Enterprise Center | Presentation to Stakeholder  | 2                                     |
| September 18, 2018 | Gem Lake City Council Presentation                 | Gem Lake City Hall          | Presentation to Stakeholder  | 44                                    |
| September 18, 2018 | Community Advisory Committee Meeting #2            | East Side Enterprise Center | Community Advisory Committee | 15                                    |
| September 22, 2018 | Payne Avenue Harvest Festival                      | Payne Avenue                | Community Event              | 17                                    |

# APPENDIX B

**Table 2: Comments and Themes Regarding Usefulness and Value of the Rush Line BRT Project**

| Comment/Question Themes from Public Engagement Events |  |
|---|--|
| Usefulness and Added Value of Rush Line BRT           | <ul style="list-style-type: none"> <li>• Opportunities:               <ul style="list-style-type: none"> <li>• Addition of an option other than driving, though not all corridor residents intend to use it.</li> <li>• The Rush Line BRT Project would be beneficial for a lot of people.</li> <li>• Beneficial to employers in the corridor, both for their business and their employees.</li> <li>• Can be used by residents of Maplewood, Vadnais Heights and White Bear Lake to go to work and events in downtown Saint Paul and avoid the challenge of parking.</li> <li>• Useful to have bus service every 10 to 15 minutes instead of only a few times a day.</li> </ul> </li> </ul>   |
| Accessibility and Connectivity                        | <ul style="list-style-type: none"> <li>• Opportunities:               <ul style="list-style-type: none"> <li>• Important connection to northeast metro.</li> <li>• Efficient connection to the METRO Green Line, providing easy transit access to downtown Minneapolis and destinations along the way, such as Allianz Field.</li> <li>• Useful for residents of Saint Paul's East Side.</li> <li>• Excitement for the frequency of service, especially in White Bear Lake.</li> <li>• Easy access to new parts of Saint Paul and Maplewood.</li> <li>• Important service for providing access to jobs and supporting business logistics.</li> <li>• New, easy way to get to work or doctor's appointments at St. John's Hospital.</li> <li>• Opportunity to make stations and vehicles accessible to people who use wheelchairs.</li> </ul> </li> <li>• Challenges:               <ul style="list-style-type: none"> <li>• Access for residents who live north and west of White Bear Lake.</li> <li>• Concerns about winter maintenance, especially as it relates to accessibility for people with disabilities.</li> <li>• Concerns about accessing stations on foot or via bicycle.</li> </ul> </li> </ul> |

| Comment/Question Themes from Public Engagement Events |  |
|---|--|
| General Support                                       | <ul style="list-style-type: none"> <li>• Opportunities: <ul style="list-style-type: none"> <li>• Some parents have stated that they are excited to teach their children how to ride the bus.</li> <li>• Support for the project from transit users, non-transit users and would-be transit users alike.</li> </ul> </li> <li>• Challenges: <ul style="list-style-type: none"> <li>• Questions about whether there is enough demand along the corridor to justify this transit investment.</li> </ul> </li> </ul>   |
| Bruce Vento Trail                                     | <ul style="list-style-type: none"> <li>• Opportunities: <ul style="list-style-type: none"> <li>• Preservation of the trail as a natural asset and addition of new amenities.</li> </ul> </li> <li>• Challenges: <ul style="list-style-type: none"> <li>• Concern about impacts such as noise and property values near the Ramsey County Regional Railroad Authority right-of-way.</li> <li>• Desire to keep the trail unchanged.</li> </ul> </li> </ul>  |
| Safety  | <ul style="list-style-type: none"> <li>• Opportunities: <ul style="list-style-type: none"> <li>• Pedestrian and bicycle improvements on Highway 61 near the downtown White Bear Lake station.</li> <li>• Pedestrian and bicycle improvements on Arcade Street in Saint Paul.</li> <li>• Inclusion of good lighting at stations for visibility and safety.</li> <li>• Enhancing safety and protection for cyclists.</li> </ul> </li> <li>• Challenges: <ul style="list-style-type: none"> <li>• Concerns about personal safety and crime at bus stations and on the bus.</li> </ul> </li> </ul> |
| Economic Impact                                       | <ul style="list-style-type: none"> <li>• Opportunities: <ul style="list-style-type: none"> <li>• A few comments have identified potential sites for redevelopment.</li> </ul> </li> <li>• Challenges: <ul style="list-style-type: none"> <li>• Concern about increased property taxes as a result of increasing property values.</li> <li>• Concern that property values will decline when the project is built.</li> </ul> </li> </ul>  |
| Other   | <ul style="list-style-type: none"> <li>• Opportunities: <ul style="list-style-type: none"> <li>• Investment on Saint Paul's East Side.</li> <li>• Reduction in traffic on I-35.</li> </ul> </li> <li>• Challenges: <ul style="list-style-type: none"> <li>• Desire for the Rush Line BRT to instead be light rail; others were happy it will not be a train.</li> <li>• Some general opposition to transit.</li> <li>• Concern about the loss of parking in downtown White Bear Lake and about having more parking added.</li> </ul> </li> </ul>   |