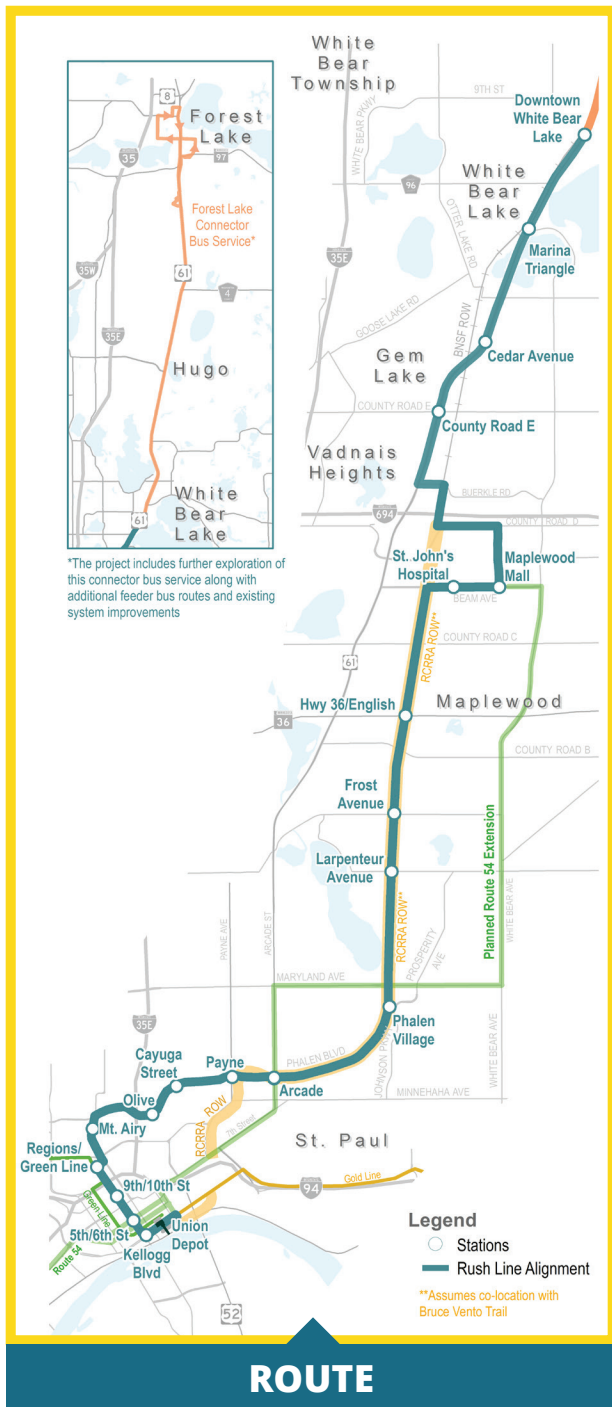
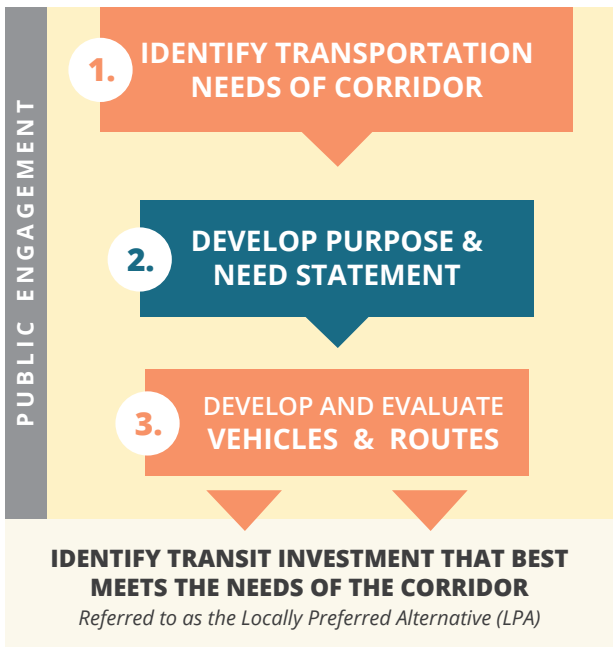


RUSH LINE PRE-PROJECT DEVELOPMENT STUDY LOCALLY PREFERRED ALTERNATIVE SUMMARY



STUDY PROCESS



Orange Line BRT, Los Angeles, CA
Photo Credit: Los Angeles Metro

The **Rush Line** locally preferred alternative is **dedicated guideway bus rapid transit** from **Union Depot in St. Paul** to **White Bear Lake**, generally along Robert Street, Phalen Boulevard, Ramsey County Regional Railroad Authority right-of-way (Bruce Vento Trail), and Highway 61.

- ▶ **Dedicated guideway bus rapid transit will share the Ramsey County Regional Railroad Authority right-of-way with the Bruce Vento Trail.**
- ▶ **The locally preferred alternative is a cost-effective solution that meets federal transit administration benchmarks for funding**
- ▶ **The locally preferred alternative best meets the needs of the corridor**
- ▶ **Why bus rapid transit?**
 - Similar level of service, but half the cost of light rail
 - Fast and frequent
 - Reliable and convenient
 - Catalyst for economic development
- ▶ **Why the Ramsey County Regional Railroad Authority right-of-way?**
 - Less costly due to public ownership of right-of-way
 - Highest potential ridership
 - Shortest travel time

- Greatest development potential due to permanence of dedicated guideway
- No private property acquisitions are anticipated
- ▶ **Why Phalen/Robert into downtown St. Paul?**
 - Serves the most jobs and equity populations (zero-car households, households below poverty)
 - Shortest travel time
 - Highest potential ridership
 - Convenient transfer to METRO Green Line expands transit access within the region
- ▶ **Why Highway 61 north of I-694?**
 - More cost effective than using BNSF Railway right-of-way
 - Serves more jobs
- ▶ **More than 5,000 people participated in the Rush Line study through community events, business outreach, presentations, pop-up events, social media, and online engagement forums.**

NEXT STEPS ▶

JUNE/JULY 2017

County and cities along route asked to confirm support for locally preferred alternative

AUGUST 2017

Submit locally preferred alternative and resolutions of support to Met Council

FALL 2017

More detailed environmental analysis and public engagement begins

LOCALLY PREFERRED ALTERNATIVE STATISTICS

APPROX. LENGTH: **14 MILES**

DEDICATED GUIDEWAY: **85-90%**

(transit-only) *important to catalyze economic development

NUMBER OF STATIONS: **20**

includes Union Depot and Maplewood Mall Transit Center

SCHEDULE: **5A-12A | 7 DAYS/WEEK**

starts at 6a on Sunday

FREQUENCY:

RUSH HOUR: EVERY 10 MIN.

NON-RUSH HOUR: EVERY 15 MIN.

CAPITAL COST (\$2021): **\$420M**

(+\$55M for other transit routes in guideway)

ANNUAL O&M COST (\$2015): **\$7.8-8M**

AVERAGE DAILY RIDERSHIP (2040):

5,700-9,700

higher ridership if other transit routes are in the guideway

TRAVEL TIME: **14 MIN.**

one way, White Bear Lake → Maplewood Mall

TRAVEL TIME: **30 MIN.**

one way, Maplewood Mall → St. Paul Central Business District

TRAVEL TIME: **6 MIN.**

one way, St. Paul Central Business District → Union Depot

PEOPLE LIVING IN STATION AREAS (2040):

60,200

JOBS IN STATION AREAS (2040): **106,700**

PEOPLE LIVING BELOW POVERTY

IN STATION AREAS (2014): **11,700**

Sign up for email updates. Provide comments. Ask questions. Learn more.



www.rushline.org



info@rushline.org



651-266-2760



facebook.com/rushline



@rushlinetransit