



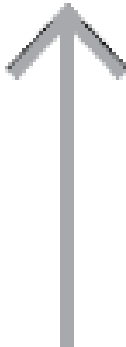
# Waste System Overview

Andrea McKennan, Ramsey County Environmental Health



# Minnesota's waste hierarchy

**Most preferred**  
environmental  
option



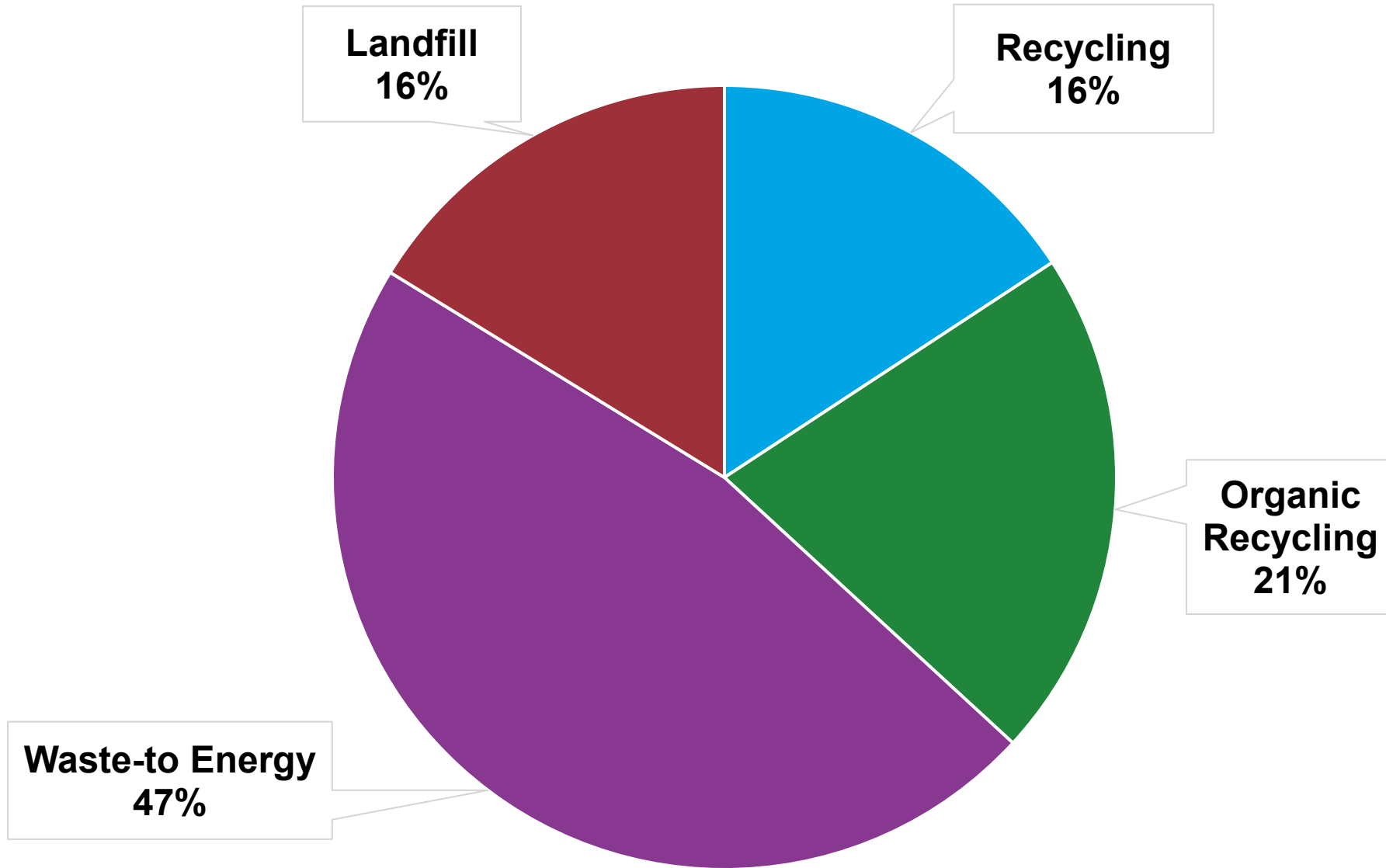
**Least preferred**  
environmental  
option





## Ramsey and Washington County Partnership

- Have worked together since 1980s to manage waste responsibly
- Today, work together through Ramsey/Washington Recycling & Energy
- 14% of state's population

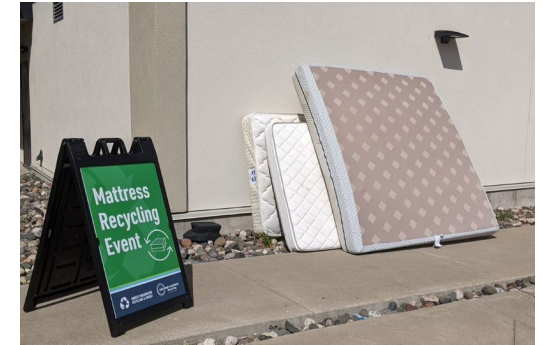
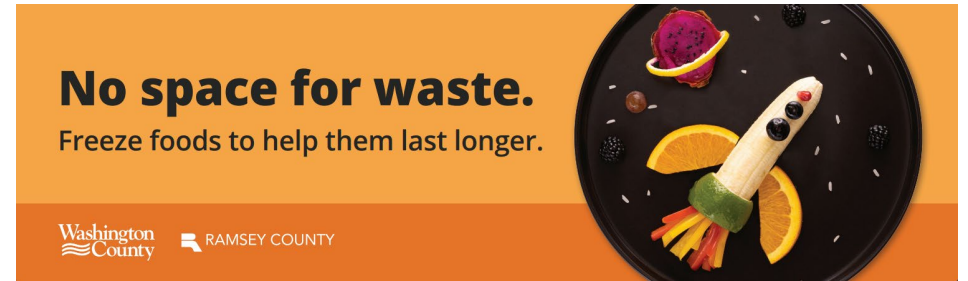


Data from SCORE report

# Trash

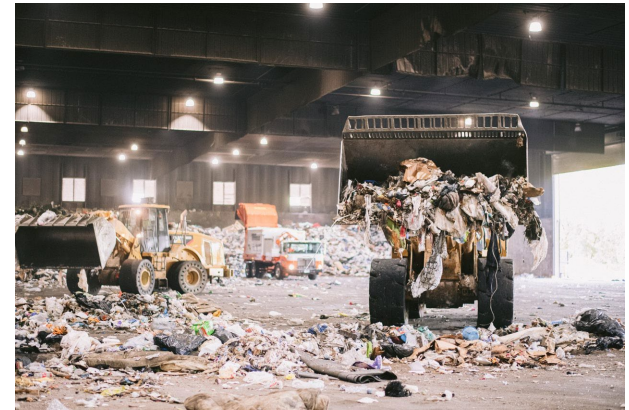
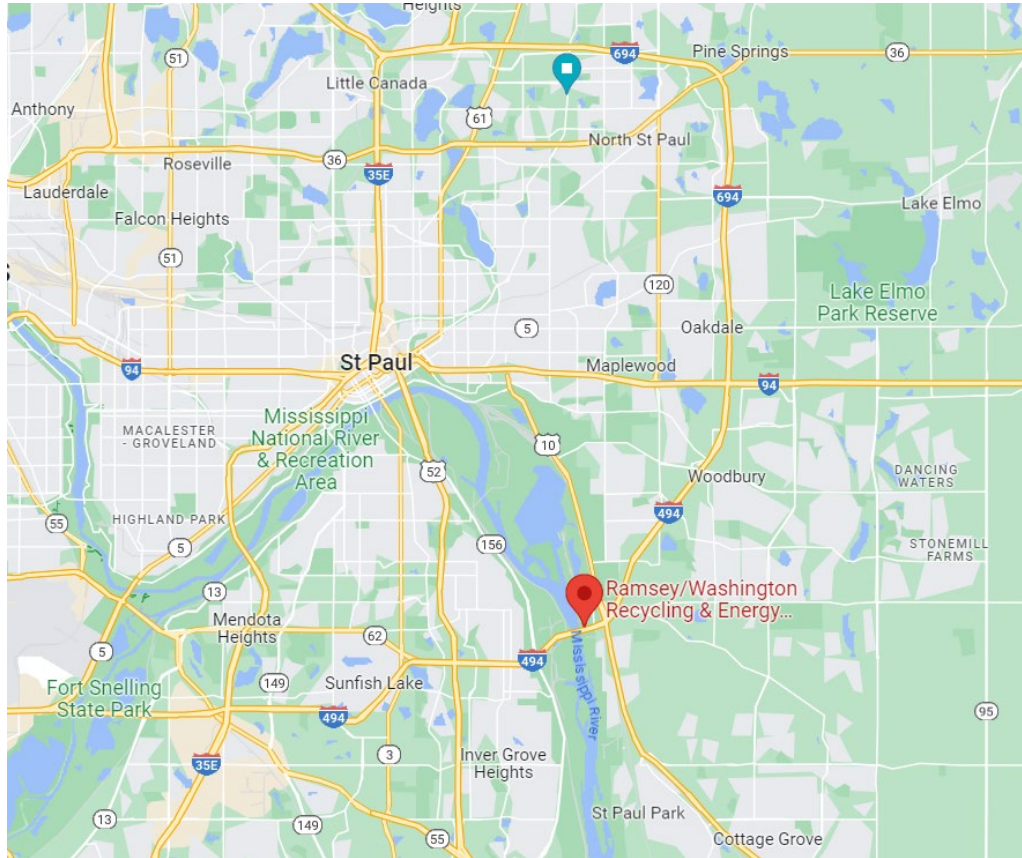
# Upstream Programs

- Yard waste collection
- Medicine collection
- BizRecycling
- Food Scraps Pickup Program
- Business Pollution Prevention Program
- Food waste prevention programs
- Deconstruction
- Outreach and education
- Mattress recycling





# Downstream – Ramsey/Washington Recycling & Energy Center





# What is the Recycling & Energy Center?



A. Landfill



B. Waste-To-Energy Power Plant



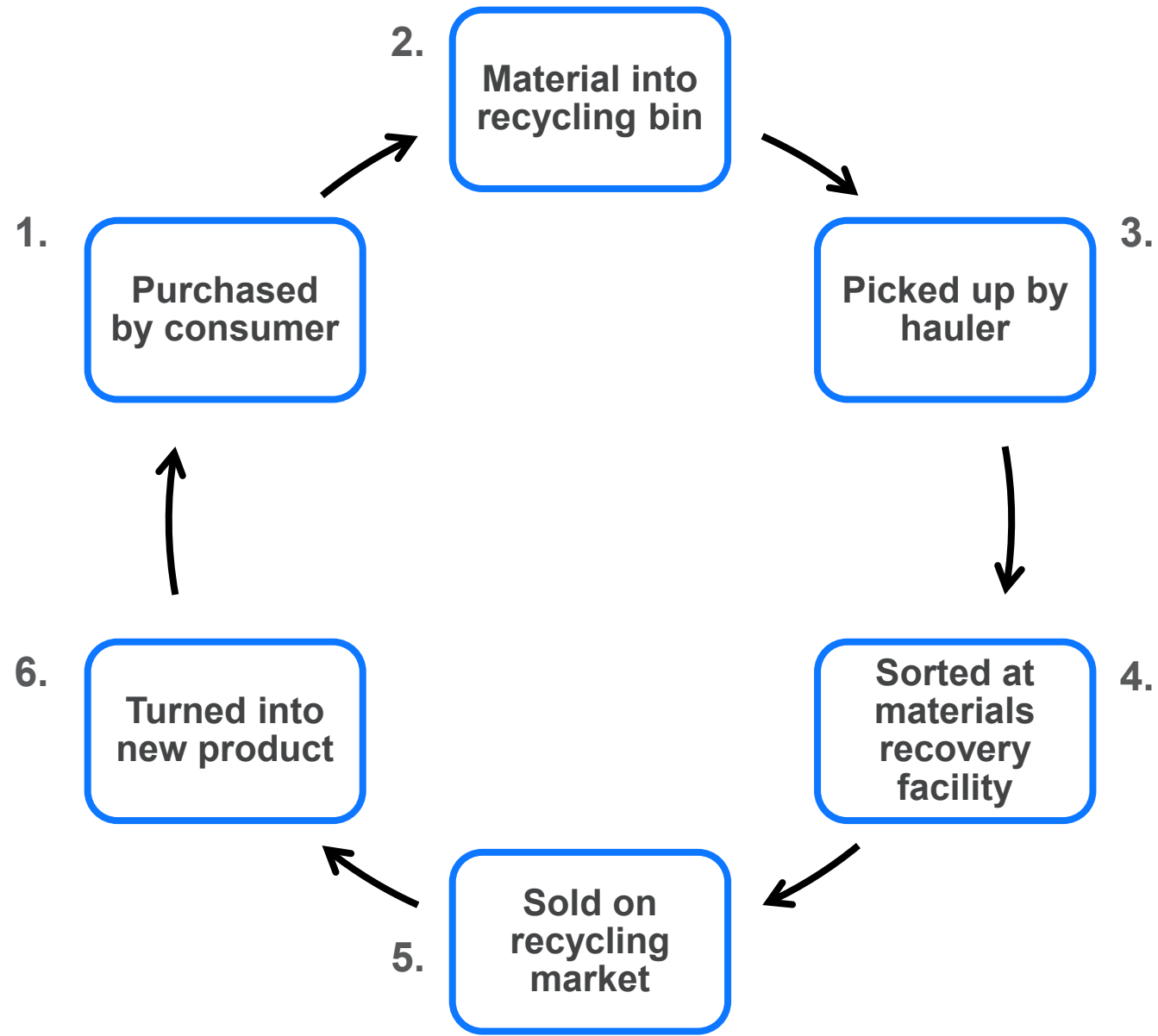
C. Recycling Center



D. Waste Processing Facility



# Recycling



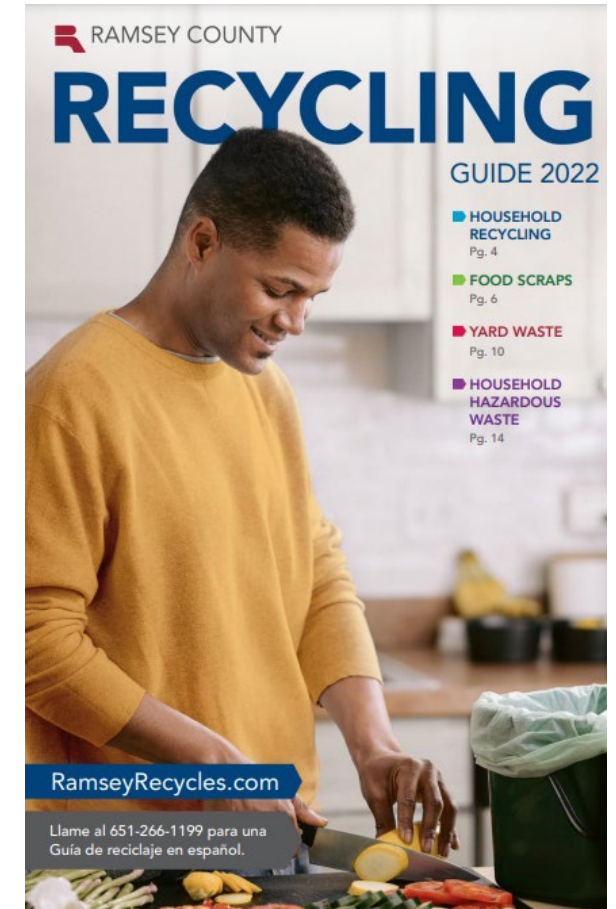
# Recycling Yes List

- Metal cans
- Glass bottles and jars
- Plastic bottles, containers and jugs (numbers 1, 2 and 5)
- Paper and cardboard



## When in Doubt

- Check your city or hauler
- Ramsey County resources
  - Look at the Ramsey County A to Z guide
  - Look at the Ramsey County Recycling Guide
  - Call 633-EASY
  - Email [askEH@co.ramsey.mn.us](mailto:askEH@co.ramsey.mn.us)
- If still unsure, put in trash

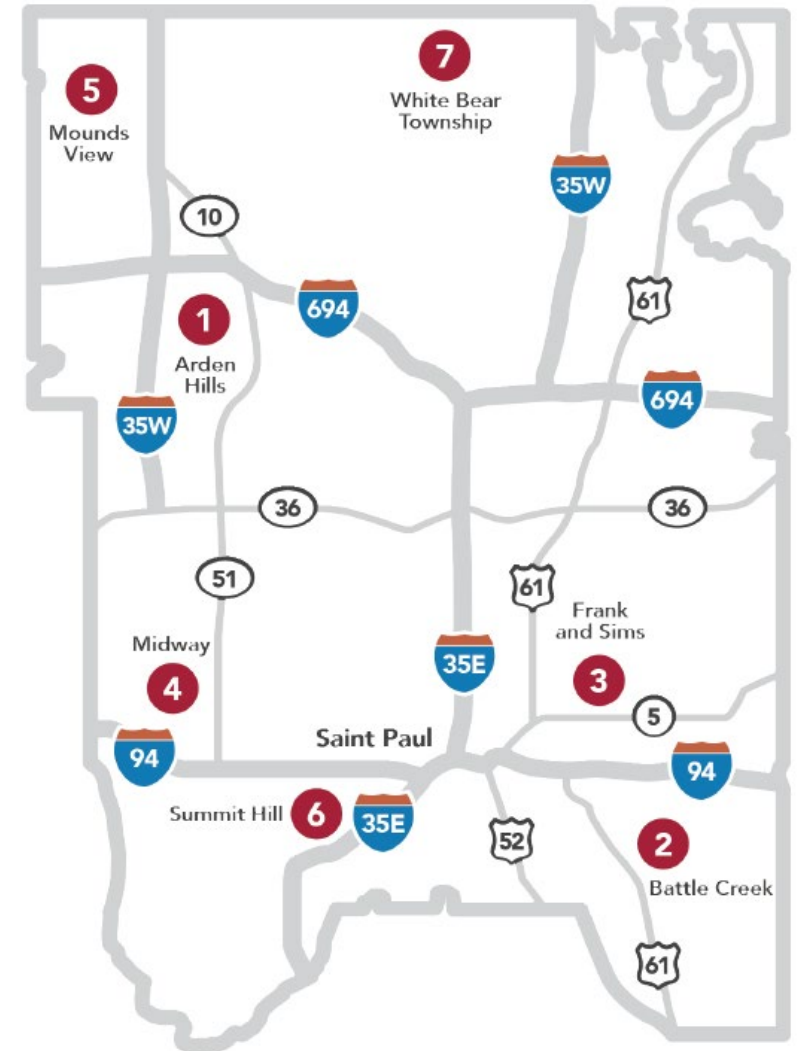




# Yard Waste

## Yard Waste

- Illegal to put yard waste in trash
- Seven free yard waste sites
- Ramsey residents can also use Washington County's Hugo yard waste site



# Facilities that Manage Yard Waste



# Food Waste



## Food Waste

- Largest portion of residential trash by weight – around 20%
- 10 drop off sites available 24/7
- Can also drop off at any yard waste site
- Free compostable bags at drop-off sites

# Food Scraps Pickup Program

- Will be rolling out to Ramsey County residents in phases over the next several years
- Currently available to Maplewood and North Saint Paul residents

## HOW IT WORKS



Order your free supply of food scrap bags.



Collect your food scraps in the bags. Once a week or when the bag is full, tie a knot at the top to close the bag.



Place your bag inside your trash cart or dumpster for collection.



Done! The food scraps will be composted.

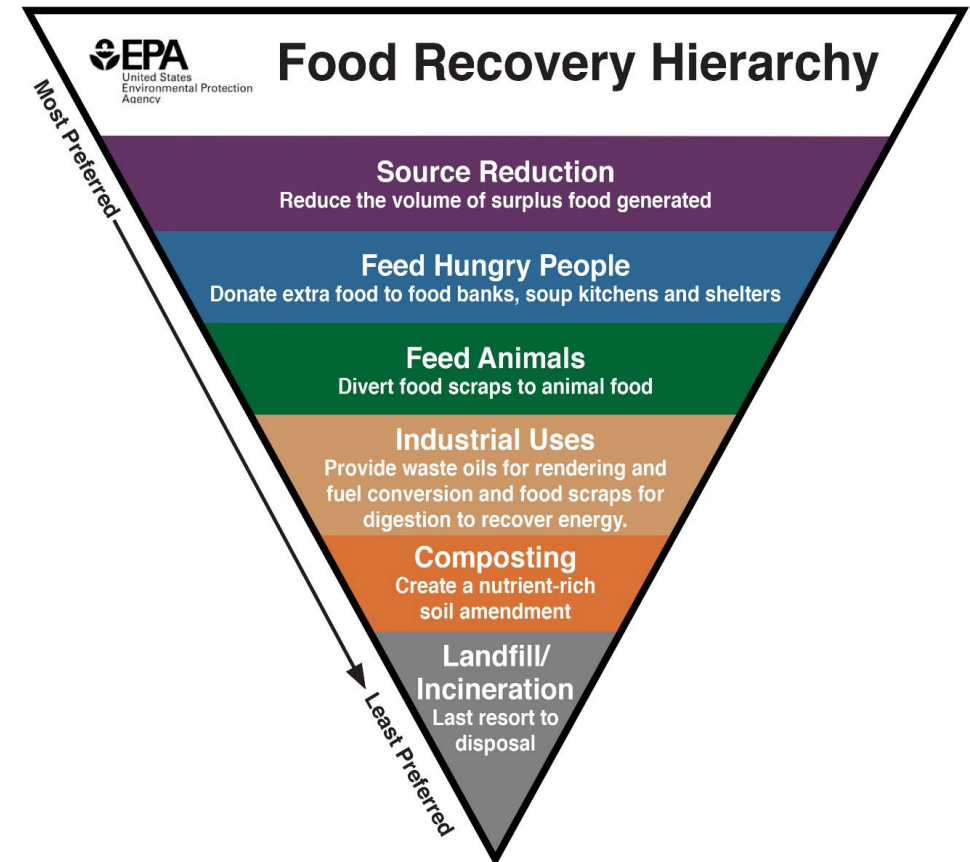
## Accepted Items

- All food waste: bones, coffee grounds and filters, dairy, eggshells, fish, fruits and fruit peels, grains, meats, poultry, vegetables, and more
- Animal/pet food
- Bird feed/seeds
- Compostable cups, plates, utensils (look for BPI logo)
- Paper egg cartons
- Paper towels, tissues



# Things You Can Do

- Reduce the amount of food waste produced
  - Don't over purchase food
  - Proper food storage
  - Freezer use
  - Understand food labels
- At home composting
- Participate in Ramsey County's food scraps collection program





# Household Hazardous Waste

# Household Hazardous Waste

## Garage

Used Oil  
Gasoline  
Antifreeze  
Weed Killer  
Insecticides  
Rodent Poisons  
Pool Chemicals  
Gas Cylinders  
Propane Tanks

## Kitchen

Oven Cleaner  
Rust Remover  
Florescent Lightbulbs  
Bleach

## Storage Closet

Electrical Cords  
Holiday Lights  
Fluorescent, LED and  
neon lightbulbs

## Bathroom

Needles/Syringes  
Lancets  
Mercury Thermometers

## Basement

Paint  
Solvents  
Stains

## Bedroom/Family Room

Cell Phone  
Computer  
Television  
Electronic Tablets

## Junk Drawer

Rechargeable Batteries  
Button Batteries

**AND MORE!**

# How to Identify Household Hazardous Waste

- Look for these words or symbols on the label: danger, caution, poison, toxic, corrosive, flammable, reactive, warning



Flammable



Corrosion



Toxic



Irritant

# Household Hazardous Waste Collection

- Year-round site in Saint Paul
- Mobile collection – rotates monthly during warmer months
- Electronics collection at Repowered
- Coming in 2025 – Environmental Service Center



## Medicine Collection

- Five free drop-off locations hosted by Ramsey County
- Many clinics and pharmacies will take unwanted medicine as well

# Waste Reduction and Reuse



## County programs

- Deconstruction
- Fix-It Clinics
- Annual waste reduction challenges around food waste and plastic use
- Communication campaigns

## Reduction and reuse

- Preventing waste before it happens through designing, manufacturing, purchasing or using items in a way that reduces the amount of waste created
- In industry this can look like:
  - Updating or modifying equipment to be more efficient/durable
  - Using less packaging
- For individuals:
  - Not taking a plastic bag at the store
  - Meal planning to prevent food waste
  - Buying used instead of new