



ENHANCING ENVIRONMENTAL HEALTH SERVICES

Environmental Service Center



Welcome

Presenters

- Sara Hollie, Director, Public Health
- Rae Eden Frank, Interim Division Manager, Environmental Health
- Jennifer McMaster, Director of Planning and Project Management

Objectives

- Introduce the Enhancing Environmental Health Services initiative
- Discuss plans for an Environmental Service Center
- Hear from you!



Group Agreements

- Share your thoughts and be open-minded.
- Listen actively/respectfully when others are speaking.
- Speak from your own experience instead of generalizing ("I" instead of "they," "we," and "you").
- If you have a question, please ask it respectfully and refrain from personal attacks.
- Do not dominate the conversation and allow others to be heard.

Land Acknowledgement

Every community owes its existence and vitality to generations from around the world who contributed their hopes, dreams, and energy to making the history that led to this moment. Some were brought here against their will, some were drawn to leave their distant homes in hope of a better life, and some have lived on this land since time immemorial. Truth and acknowledgment are critical to building mutual respect and connection across all barriers of heritage and difference.

We are standing on the ancestral lands of the Dakota People. We want to acknowledge the Ojibwe, the Ho Chunk and the other nations of people who also called this place home. We pay respects to their elders past and present. Please take a moment to consider the treaties made by the tribal nations that entitle non-Native people to live and work on traditional Native lands. Consider the many legacies of violence, displacement, migration, and settlement that bring us together here today. And please join us in uncovering such truths at any and all public events.

The acknowledgment given in the USDAC Honor Native Land Guide - edited to reflect Minnesota tribes. In review with SIA and endorsed by Shannon Geshick, Executive Director Minnesota Indian Affairs Council.

Ramsey County Goals and Priorities



County Goal

- Strengthen individual, family and community well-being through innovative programming, prevention and environmental stewardship.

County Strategic Priority

- Residents first: effective, efficient and accessible operations.

Enhancing Environmental Health Services

- System-wide redesign of services provided to residents.
- Motivated by resident feedback, which identified opportunities for improvement in accessibility, efficiency and scope of services.



What is an Environmental Service Center?

- Facility for the collection of recyclables, food scraps and household hazardous waste.
 - Household hazardous waste includes items such as cleaning supplies, paint, fuel, batteries, used oil, fluorescent bulbs, electronic waste and more.
- Permanent location for Fix-It Clinics.
- Free product reuse room where the community can find items like paint, automotive fluids and household cleaners.
- Space for community education programs.





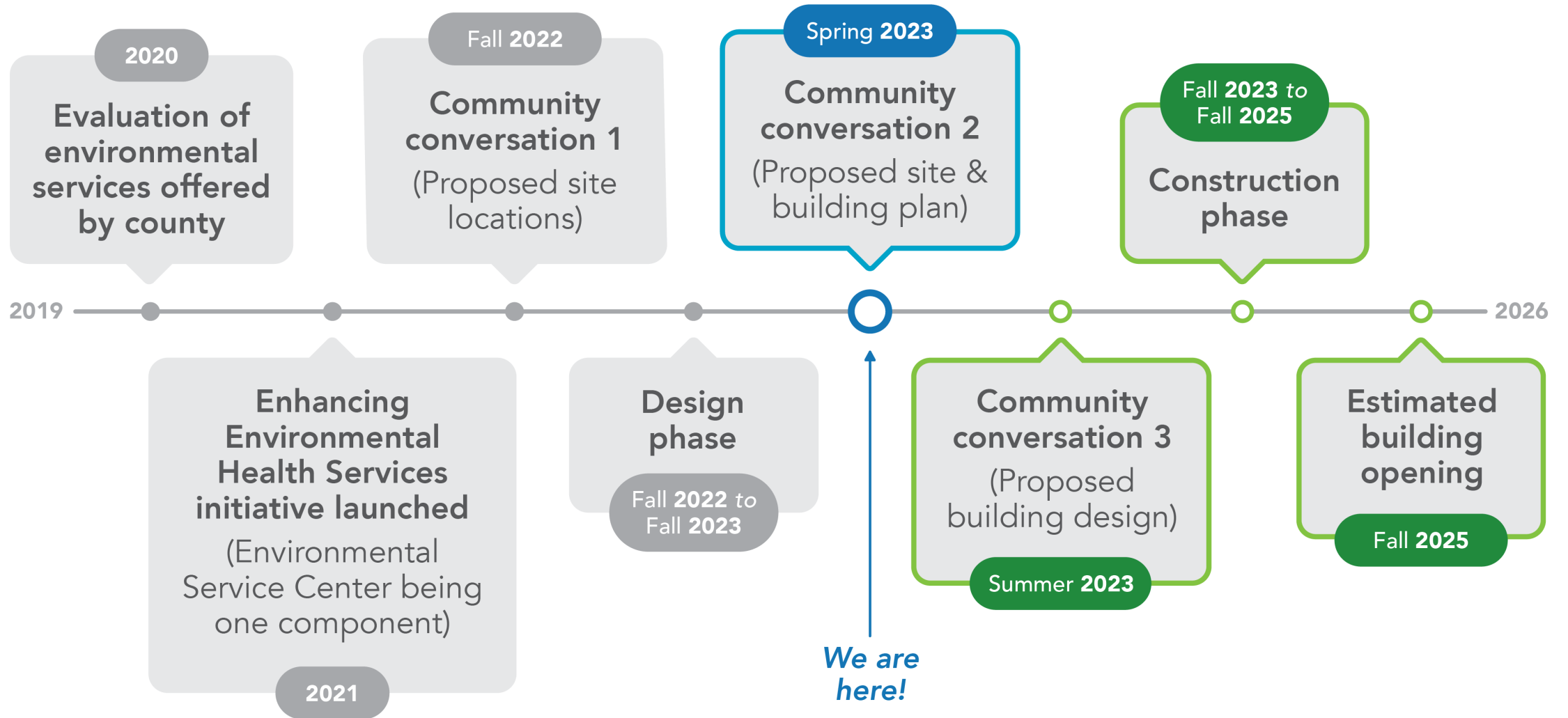
Existing facility, Washington County
Environmental Center, MN



Conceptual rendering of facility in
Pope Douglas, MN







Timeline is subject to change.

What We've Heard from You

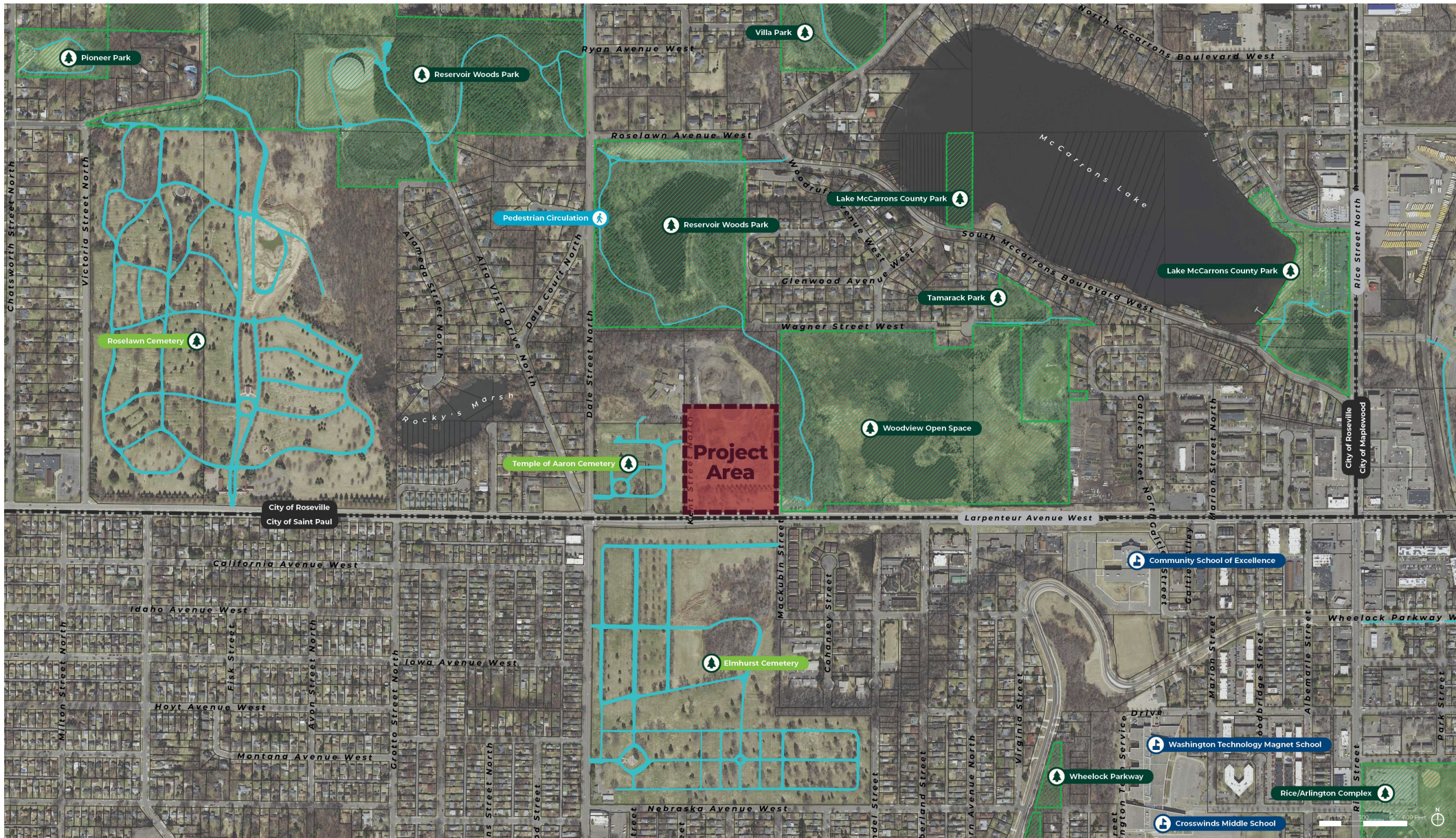
Through surveys and listening sessions conducted in fall of 2022 we heard:

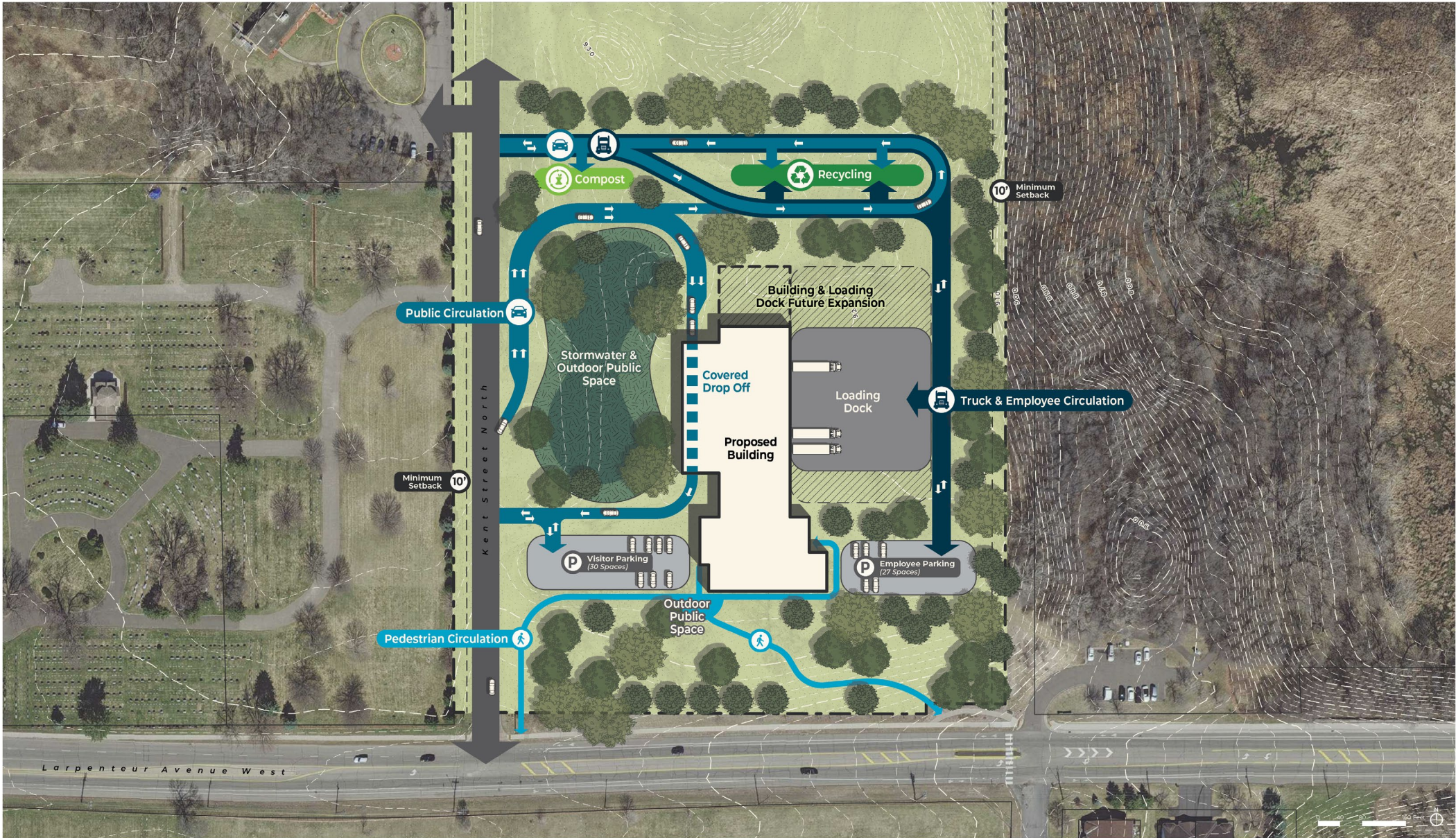
- 94% of residents are looking forward to using the new Environmental Service Center.
- Residents are excited about:
 - One-stop shop for recycling and disposal services
 - Community space
 - Convenient, accessible location
- Residents are concerned about:
 - Impact to surrounding area – traffic, safety, and noise
 - Ensuring accessibility

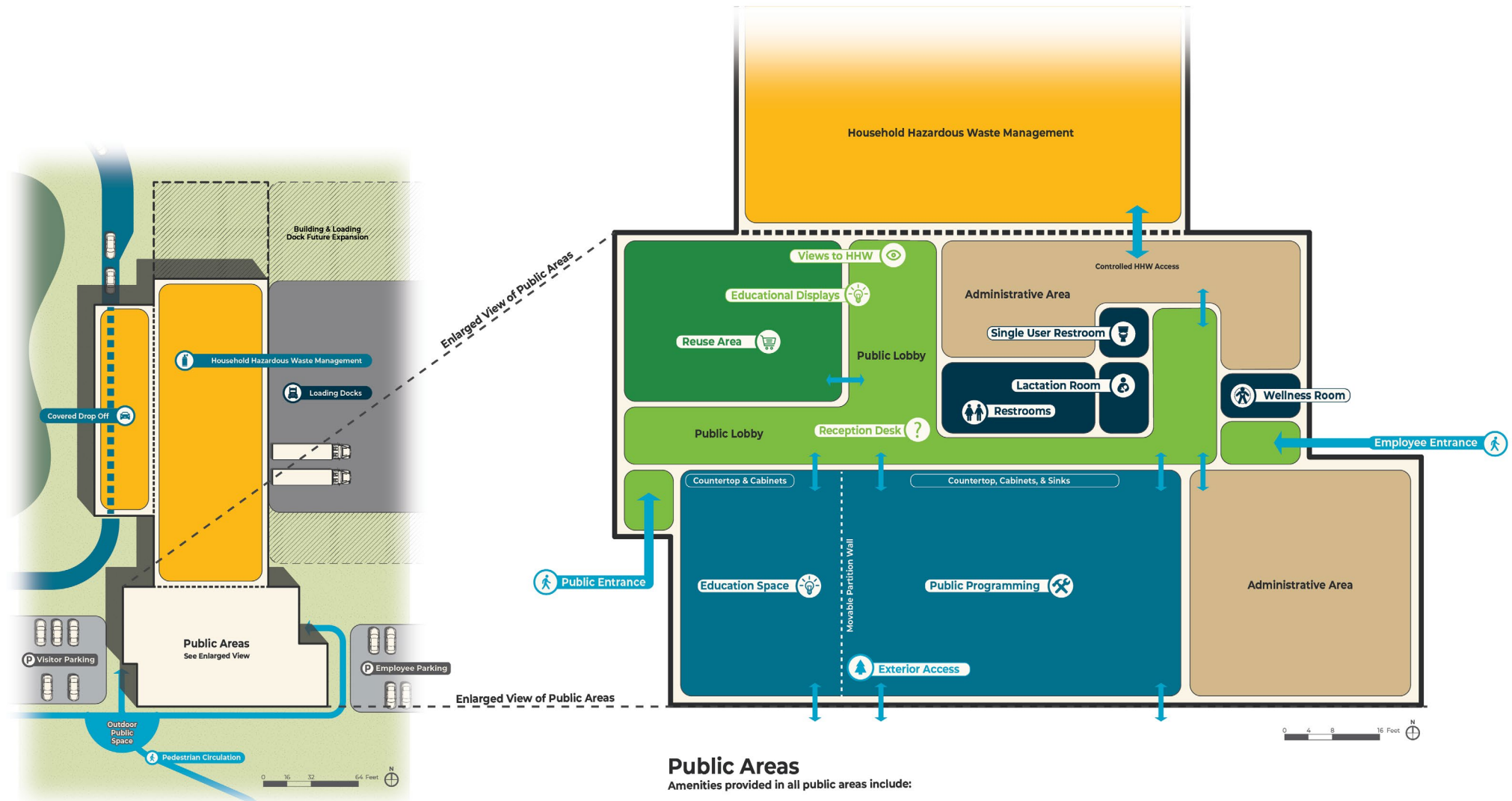
Addressing Your Concerns

- Impact to surrounding area:
 - New plantings will provide buffer between site and nearby neighbors and park
 - Hill between site and park space will help with buffering as well
 - Conducting traffic assessment to help ensure minimal traffic disruption to surrounding area
- Ensuring accessibility:
 - Site is centrally-located in county
 - Site is located along public transit lines and public walkways









Public Areas

Amenities provided in all public areas include:

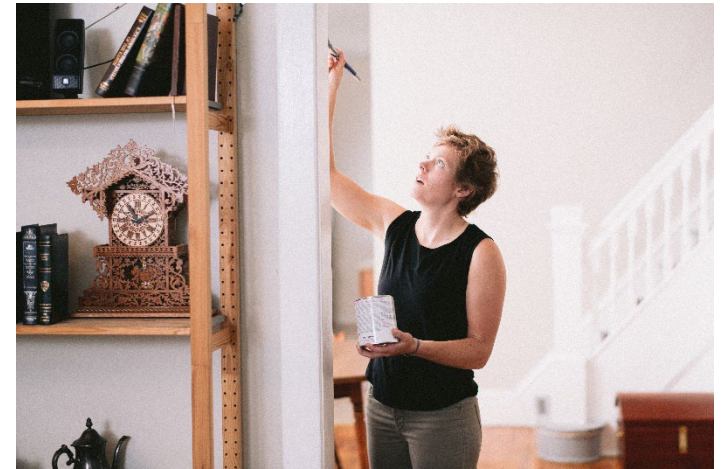
- Accessibility
- Daylighting

Funding Source

- The Solid Waste Fund, generated from the Ramsey County Environmental Charge, will be used to build the Environmental Service Center.
 - The County Environmental Charge is a fee on trash collection services – it's part of your trash bill
 - Projected cost range: \$27 - \$29 million
- There will be **no increase** to the existing County Environmental Charge as a result of constructing this facility.

Next Steps

- Resident survey: www.ramseycounty.us/ESC
- Community listening sessions through early April.
- Feedback gathered through this process will inform site and facility plan.
- Will have preliminary facility designs to share with community in early summer.





Questions?

www.ramseycounty.us/ESC
AskEH@ramseycounty.us