

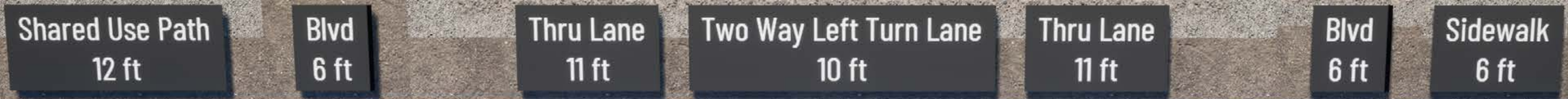
Rice Street Visioning & Reconstruction

Welcome
to the Rice Street
open house!

*Join us in the Great Hall
for info on the project
and a light meal.*



Scan me and
sign up for email
updates!



Rice Street Visioning & Reconstruction

What is this project?

Ramsey County and the City of Saint Paul are working to create a community vision for Rice Street between Pennsylvania Avenue and Wheelock Parkway. From 2019-2022, the project team gathered feedback from the community to learn about existing issues and create a recommended design. From 2022-2024, the project team will be working to finalize the project design and create construction plans.

- Provide Business Support
- Improve Transit Service
- Improve Bicycle Safety
- Promote Community Investment
- Improve Public Safety
- Improve Vehicle Safety
- Promote Economic Development
- Create an Inviting Environment
- Enhance Pedestrian Safety
- Promote a Healthy Community

Where we've been

Goals: Learn about existing conditions and create broad recommended design

Where we're going

Goals: Finalize the details of the project design and create construction plans



Gather feedback on Rice Street
October 2019-October 2020



Share potential designs
November 2020-June 2021



Introduce top three designs
July 2021-October 2021



Share recommended design
November 2021-March 2022

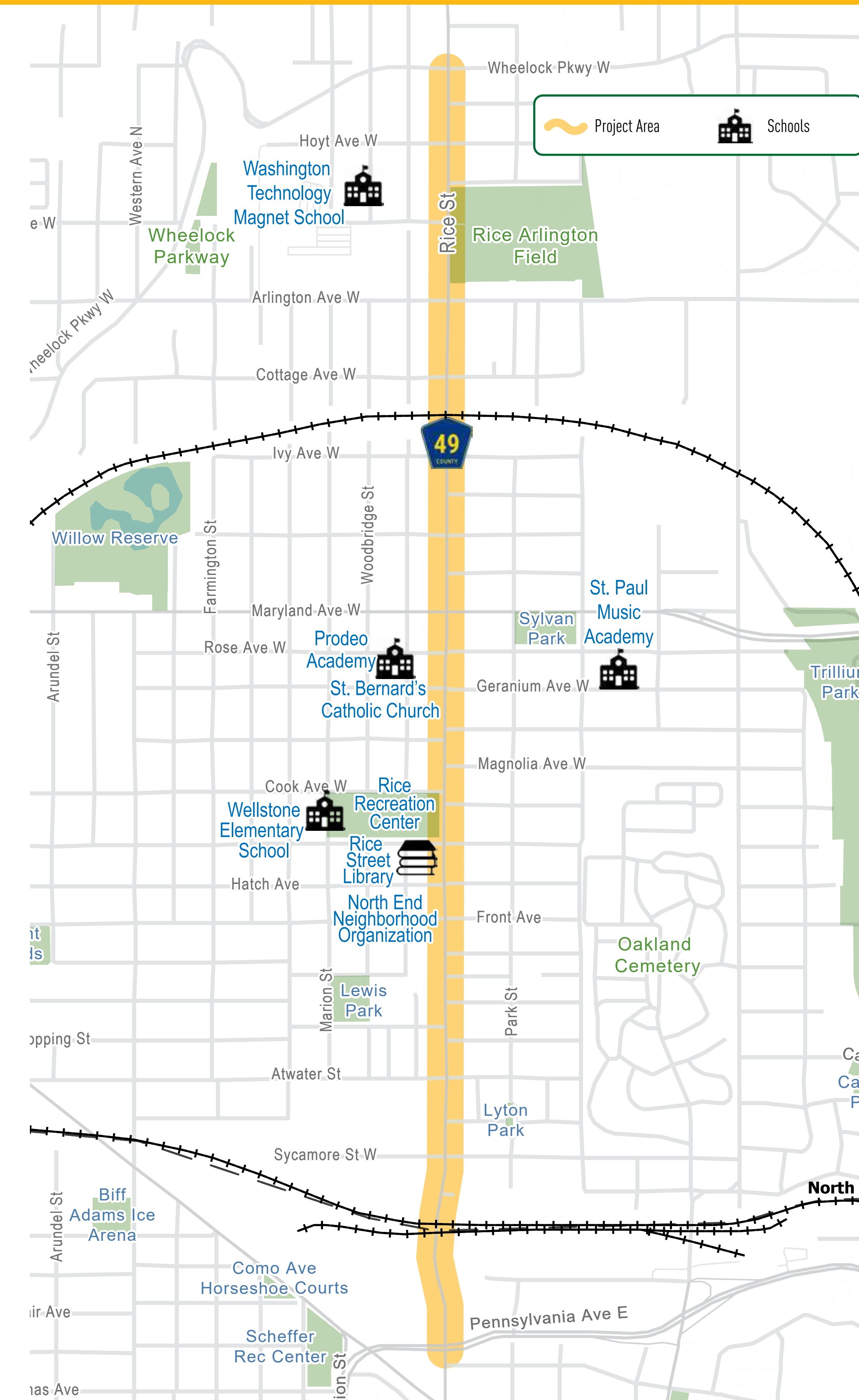
Refine recommended design
November 2022-March 2023



Share final design and discuss construction timeline
April 2023-December 2023

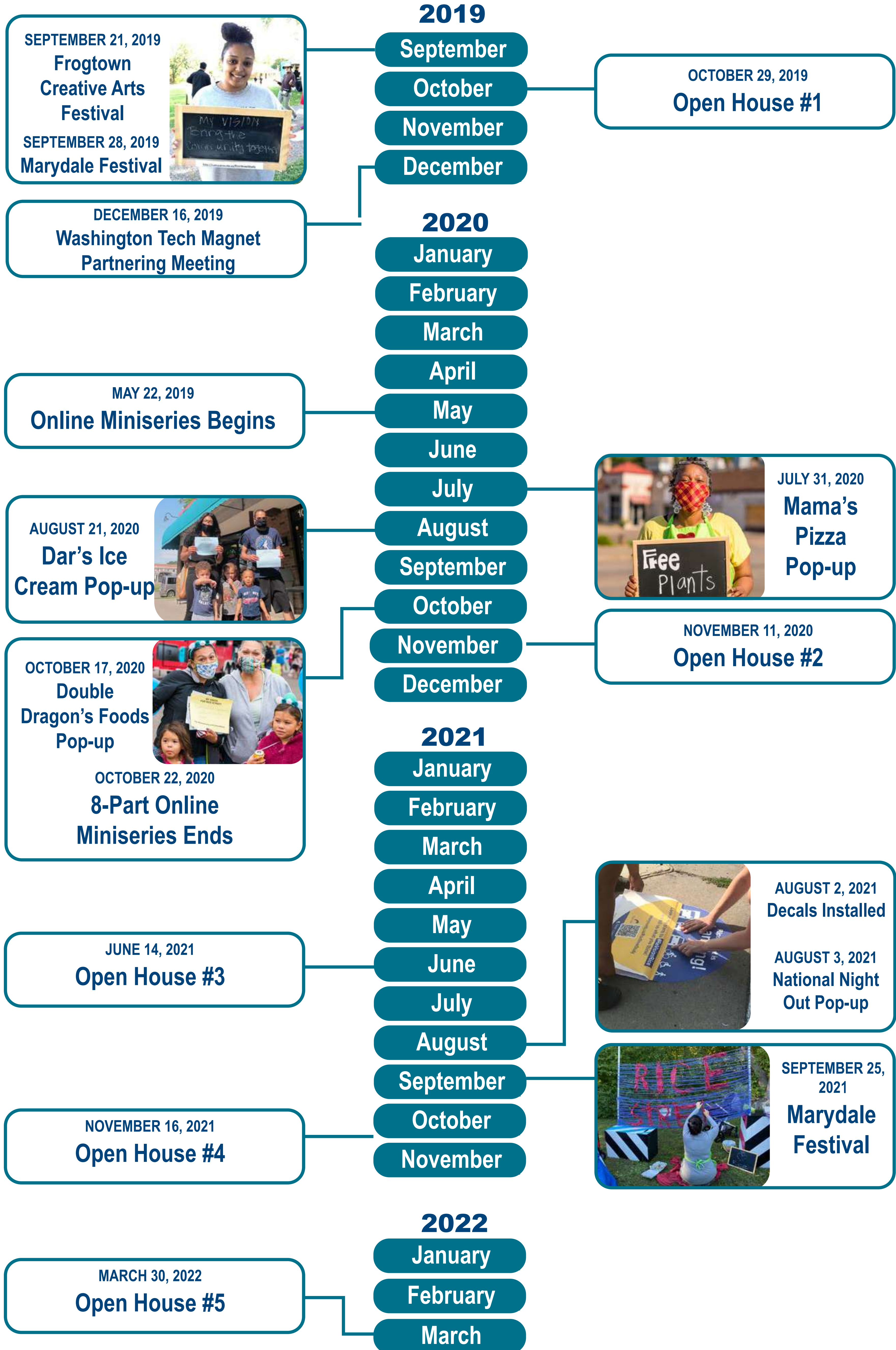
Raise awareness for construction
January 2024-June 2024

Construction!
June 2024 and beyond



Rice Street Visioning & Reconstruction

Engagement to Date



Rice Street Visioning & Reconstruction

Engagement to Date

From October 2019 - March 2022, the project team gathered feedback from the community to help shape the final design for Rice Street. Inclusive community engagement is very important to the success of the study. Input from the public has helped shape the project every step of the way and will continue to do so.



5
OPEN
HOUSES



- October 29, 2019 – 43 attendees
- November 18, 2020 – 20 responses, 146 video views
- July 14, 2021 – 96 registrants, 294 video views
- November 16, 2021 – 114 registrants, 91 video views
- March 30, 2022 – 68 registrants, 93 video views

9 POP-UP EVENTS



- Frogtown Creative Arts Festival
- Marydale Festival 2019
- Revision Rice Pop-Up
- Dars Ice Cream Pop-Up
- LarpentOUR
- Double Dragon Foods Pop-Up
- National Night Out Pop-Up
- Rice-Larpenteur Block Party
- Marydale Festival 2021

27 

EMAILS SENT

2,360

EMAIL
SUBSCRIBERS



262

INPUTID
COMMENTS

38

SIDEWALK DECAL
LOCATIONS



14

VIDEOS



37

STAKEHOLDER
MEETINGS



9

SURVEYS



4

COMMUNITY
LIAISONS

2,418

TOTAL
VIDEO VIEWS



1,395

TOTAL
IN-PERSON COMMENTS

583

DIGITAL SURVEY
RESPONSES



4

FOCUS
GROUPS

OVER
4,650
COMMUNITY
COMMENTS

Rice Street Visioning & Reconstruction

Recommended design: shared use path



Key Elements

- ★ 3-lane roadway with 11-foot lanes and a 10-foot center turn lane
- ★ 6-foot sidewalk, 6-foot boulevards
- ★ 12-foot shared use side path

Community Priorities

- + More space for trees, plants, benches and more.
- + More flexibility to accommodate on-street parking.
- + More space to make a safe and vibrant environment.
- + Adds an important link to the city's bike network.
- + Separates bikes from cars to ensure higher level of safety.
- + Reduces pedestrian, bike and car crash rates.
- + Accommodates the planned G Line BRT transit project.

City & County Considerations

- Supports county's commitment to an all-abilities transportation network.
- More pedestrian and bicycle-focused use of space, consistent with city and county complete streets policies.
- More ability to accommodate snow storage, an important consideration for city maintenance purposes.

➔ **Did you know:** From 2019-2022, the project team and the community considered 7 designs before selecting the recommended design you see here!

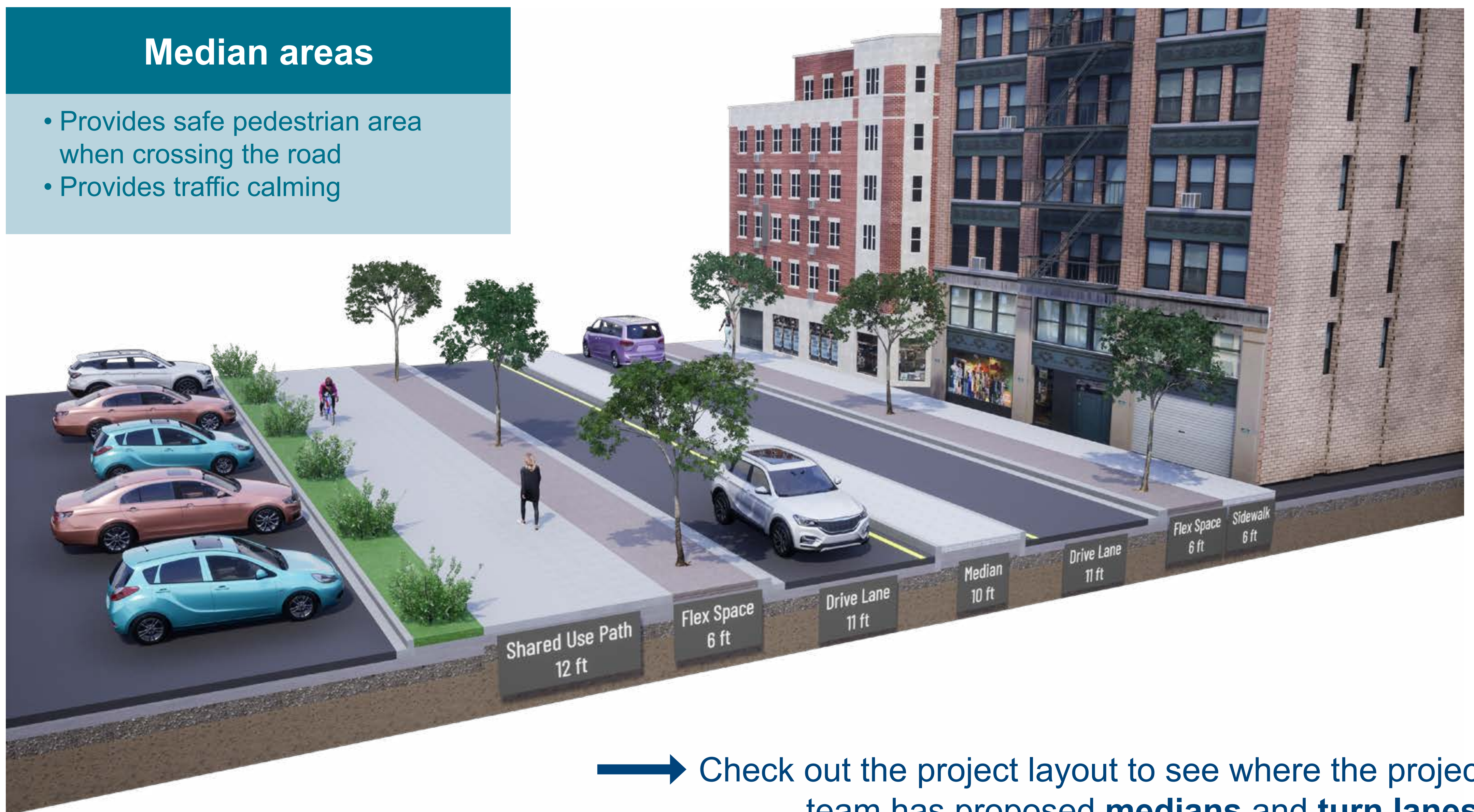
Rice Street Visioning & Reconstruction

Recommended design: turn lanes and medians

The center space of the roadway will vary throughout the project area. Depending on need and available space, some areas will have a median, and others will have center turn lanes.

Median areas

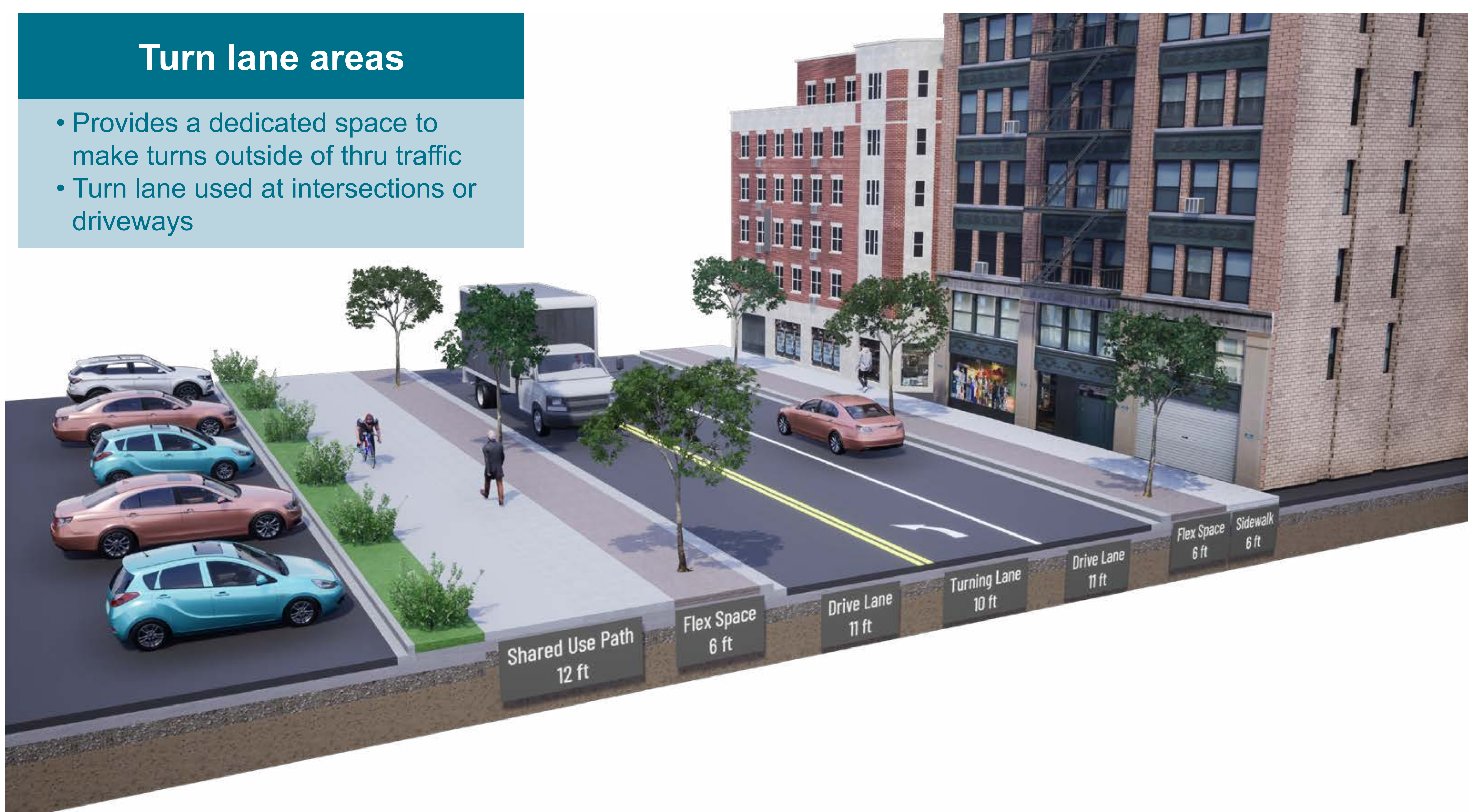
- Provides safe pedestrian area when crossing the road
- Provides traffic calming



➔ Check out the project layout to see where the project team has proposed **medians** and **turn lanes**.

Turn lane areas

- Provides a dedicated space to make turns outside of thru traffic
- Turn lane used at intersections or driveways



Rice Street Visioning & Reconstruction

Studying Parking on Rice Street

To better understand parking along Rice Street, three parking studies have taken place along the two-mile project area. This information will help us understand current usage along Rice Street.

Parking Study Facts

- Rice Street parking studies completed in November 2019, October 2021, and September 2022.
- Staff took parking counts at various times throughout the day, with the earliest being measured at 9 a.m. and the latest at 8 p.m.
- Staff did not study side street parking within these studies. Currently, there are 27 of 30 intersections in the project area that have additional parking on side streets.



→ We need your feedback on parking! Share where you park on the layout.

Key Facts



355 parking spaces on Rice Street today



Currently on street parking on each block of project area except for 10 blocks on the north end of the corridor.



Off-street, unrestricted public parking spaces are limited to the Rice and Arlington Sports Complex and the Rice Recreation Center.



Currently, there are parking restrictions along Rice Street during peak hours.

Rice Street Visioning & Reconstruction

How do we decide where to put parking?

We recognize that parking is a critical subject, and that businesses, residents, and agencies have their own unique needs. What does the engineering team need to consider when designing where to put parking?

Consideration #1: Parking availability ultimately comes down to fitting it within the project footprint.

Some spaces have enough room for both turn lanes and parking.



Other spaces are tight. In these cases, adding space for parking may eliminate the space for the center turn lane.



Consideration #2:

The Rice Street roadway is at the end of its useful life. The road needs to be modernized. To meet current design and safety standards, ~40% of the parking spaces would be removed at minimum.

Per Minnesota State Statute, parking is not allowed...

5 feet from a driveway

30 feet from an intersection

Across from a T-intersection

10 feet from a fire hydrant

80 feet from a bus stop

20 feet from a crosswalk

50 feet from a railroad crossing

Rice Street Visioning & Reconstruction

Future Parking on Rice Street

The recommended design for Rice Street will include parking, but it will look different than today. Space for on-street parking will need to be re-purposed in order to fit the new pedestrian, bike, transit, and public realm facilities.

How do spaces benefit WITH parking?



★ Convenient access to businesses and destinations

★ Easier loading and unloading for deliveries

★ Convenient parking for residents who live along Rice Street

How do spaces benefit WITHOUT parking?



★ More room for green space or other aesthetic features

★ More storefront space for business activities

★ Better visibility for people trying to cross the street

Rice Street Visioning & Reconstruction

Potential Future Parking on Rice Street: Pennsylvania Ave to Front St

85

parking spaces here today

20

Spaces occupied during peak utilization, per parking studies

2*

Potential parking spaces available in new design



Potential parking opportunities



Potential parking removal

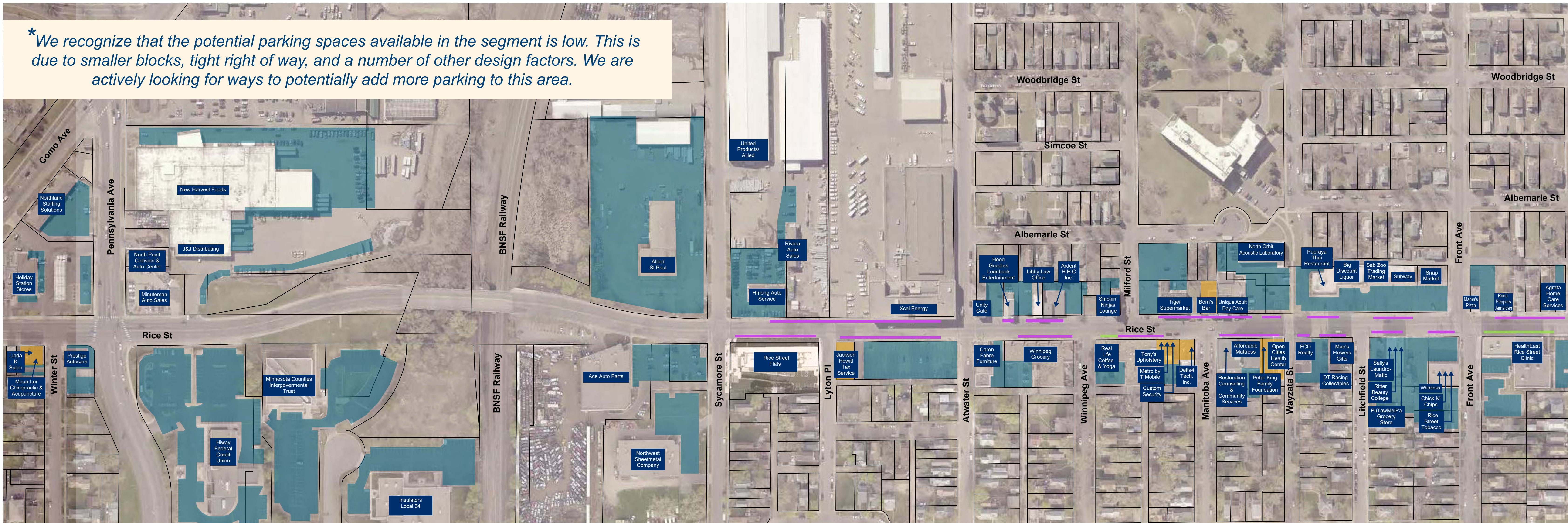


Businesses without dedicated off-street parking



Off-street parking areas

*We recognize that the potential parking spaces available in the segment is low. This is due to smaller blocks, tight right of way, and a number of other design factors. We are actively looking for ways to potentially add more parking to this area.



➔ Share where you park on the project layout!

Rice Street Visioning & Reconstruction

Potential Future Parking on Rice Street: Front St to Maryland Ave

108

parking spaces here today

10

Spaces occupied during peak utilization, per parking studies

30

Potential parking spaces available in new design



Potential parking opportunities



Potential parking removal



Businesses without dedicated off-street parking



Off-street parking areas



➔ Share where you park on the project layout!

Rice Street Visioning & Reconstruction

Potential Future Parking on Rice Street: Maryland Ave to Wheelock Pkwy

162

parking spaces here today

5

Spaces occupied during peak utilization, per parking studies

41

Potential parking spaces available in new design



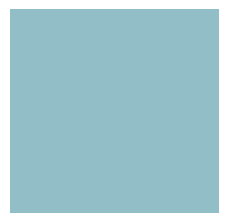
Potential parking opportunities



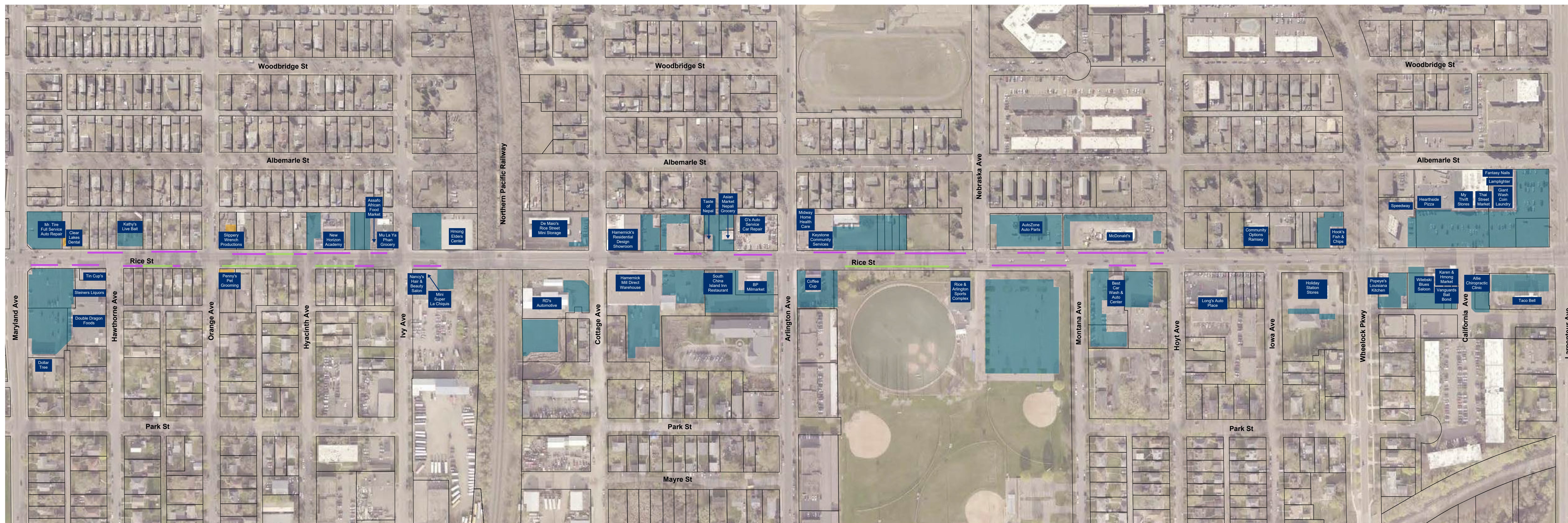
Potential parking removal



Businesses without dedicated off-street parking



Off-street parking areas



➔ Share where you park on the project layout!

Rice Street Visioning & Reconstruction

Potential Public Space Improvements

Identifying areas of improvement

Improving existing spaces along Rice Street

Rebuilding the roadway presents an opportunity to create public space improvements along Rice Street.

Improving public spaces along Rice Street can help create a unique place that celebrates and elevates the many diverse cultures along Rice Street, while supporting a safer, more livable community for all people.

The image to the right shows some of the key areas that the County and City are exploring for public space improvements.



1

Murals

Are often on private property, and require partnerships with private businesses and owners.

2

Sidewalks/Paths

Are public property, can include different colored pavement or markings, but are generally kept clear.

3

Boulevards

Are public property and often the main location for streetscape elements, such as lighting, benches, art, bike racks, trees, and plants.

4

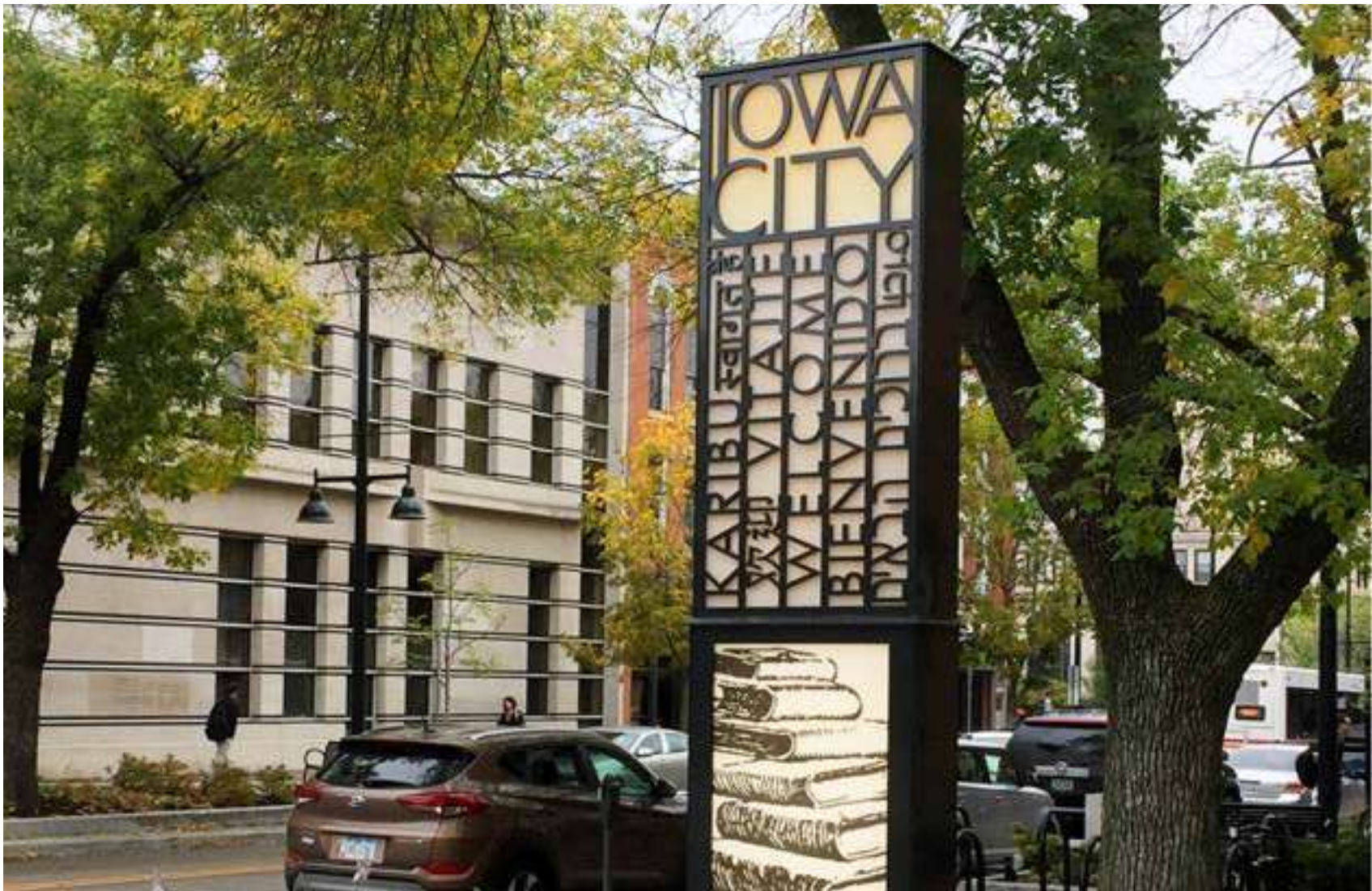
Crosswalks

Are public property, can include different colored pavement or markings, but are generally kept clear.

Rice Street Visioning & Reconstruction

Improvements for the public spaces along Rice Street

Place a sticker by the top two types of features you would like to see on Rice Street!



Wayfinding Signs



Public Art



Street Trees



Bike Racks



Plants and Stormwater Management



Street Furniture

Rice Street Visioning & Reconstruction

Construction Stages

Construction staging is the sequence and timing of construction, or the steps that need to be taken during construction in order to build a project. We haven't determined specific stages for Rice Street yet. However, the project team is considering breaking the construction activities up into three main areas:

Stage 1: Maryland Ave. to Wheelock Pkwy.



Key features: Double Dragon Foods, Washington Magnet School, Arlington Field, bridge over railroad



Key Characteristics and Issues

- High crash rates at Arlington, Hoyt
- High bike and ped crossing volumes
- Safe routes to school (Washington)
- Athletic complex access/parking
- Suburban/transitional land use

Stage 2: Front St. to Maryland Ave.



Key features: Rice Rec Center, Dar's Ice Cream, Sylvan Park, St. Bernards



Key Characteristics and Issues

- High crash rates at Front
- High bike and ped crossing volumes
- Safe routes to school
- Future community center
- High crash rates at Maryland
- High bike and ped crossing volumes
- Suburban/transitional land use
- Interface of SF residential/commercial
- On-street parking demand
- Traditional urban form, with gaps
- Business district support

Stage 3: Pennsylvania Ave. to Front St.



Key features: Lyton Park, bridge over railroad, Ace Auto, Lewis Park

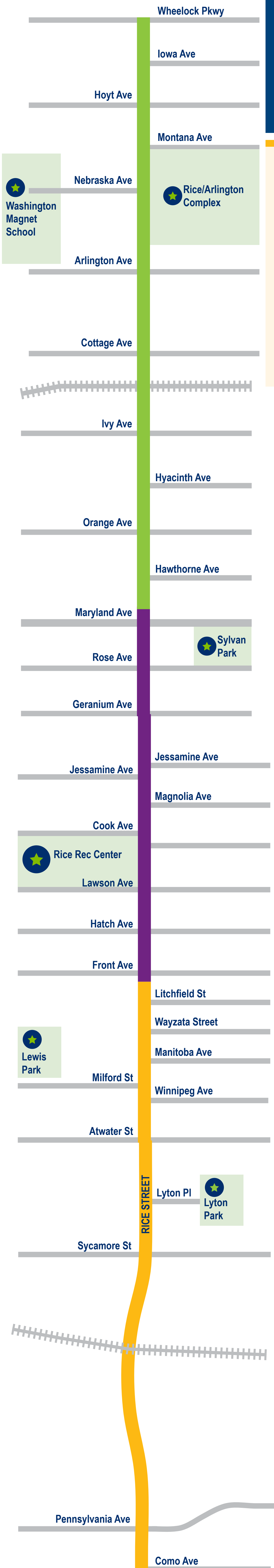


Key Issues and Considerations

- Industrial and manufacturing,
- Gateway space to/from Rice and the Capitol
- Industrial and shipping needs
- Connection to Como triangle

Staging Considerations

- Detour routes (road closure) versus under construction, but partially open to traffic
- Construction acceleration opportunities (longer working days, weekends, etc.)
- Key travel routes (regional and local)
- Access in/out of area
- Public safety
- Space for contractor to work safely and efficiently
- Specific business needs
- Emergency services
- Community events



Rice Street Visioning & Reconstruction

Construction Communication

Several communication outlets will be utilized during construction to share current activities, impacts, and milestones with the public. The project team will ensure messaging is clear, consistent, and timely.



You



Website Updates

ramseycounty.us/RiceStreetStudy

Weekly updates, detour maps, staging information, and more can be found on the website.



Email Updates

ramseycounty.us/RiceStreetStudy

Sign up for project email updates on the project website!



Scan me and sign up for email updates!



Project Team



Facebook Posts

[@RamseyCountyMinnesota](https://www.facebook.com/RamseyCountyMinnesota)

Construction updates will be shared on Facebook.



Videos

Stay tuned!

The project team will develop a video about the construction timeline, closures, and detours before construction begins.

Rice Street Visioning & Reconstruction

Next steps for Rice Street

WE ARE
HERE

Refine recommended design

November 2022-March 2023

**Share final design and discuss
construction timeline**

April 2023-December 2023

Raise awareness for construction

January 2024-June 2024

Construction!

June 2024 and beyond

Stay involved!

Stay on the lookout for more events like this over the next year. Your input will help shape the future of Rice Street!



Scan me and sign up for email updates!



Shared Use Path
12 ft

Bldv
6 ft

Thru Lane
11 ft

Two Way Left Turn Lane
10 ft

Thru Lane
11 ft

Bldv
6 ft

Sidewalk
6 ft