

Rice Street Visioning & Reconstruction

Welcome
to the Rice Street
open house!

*Join us in the school
library for more info on the
project and a light meal.*



Scan me and
sign up for email
updates!



Shared Use Path
12 ft

Blvd
6 ft

Thru Lane
11 ft

Two Way Left Turn Lane
10 ft

Thru Lane
11 ft

Blvd
6 ft

Sidewalk
6 ft

Rice Street Visioning & Reconstruction

What is this project?

Ramsey County and the City of Saint Paul are working to create a community vision for Rice Street between Pennsylvania Avenue and Wheelock Parkway. From 2019-2022, the project team gathered feedback from the community to learn about existing issues and create a recommended design. From 2022-2024, the project team will be working to finalize the project design and create construction plans.

- Provide Business Support
- Improve Transit Service
- Improve Bicycle Safety
- Promote Community Investment
- Improve Public Safety
- Improve Vehicle Safety
- Promote Economic Development
- Create an Inviting Environment
- Enhance Pedestrian Safety
- Promote a Healthy Community

Where we've been

Goals: Learn about existing conditions and create broad recommended design

Where we're going

Goals: Finalize the details of the project design and create construction plans



Gather feedback on Rice Street
October 2019-October 2020



Share potential designs
November 2020-June 2021



Introduce top three designs
July 2021-October 2021



Share recommended design
November 2021-March 2022

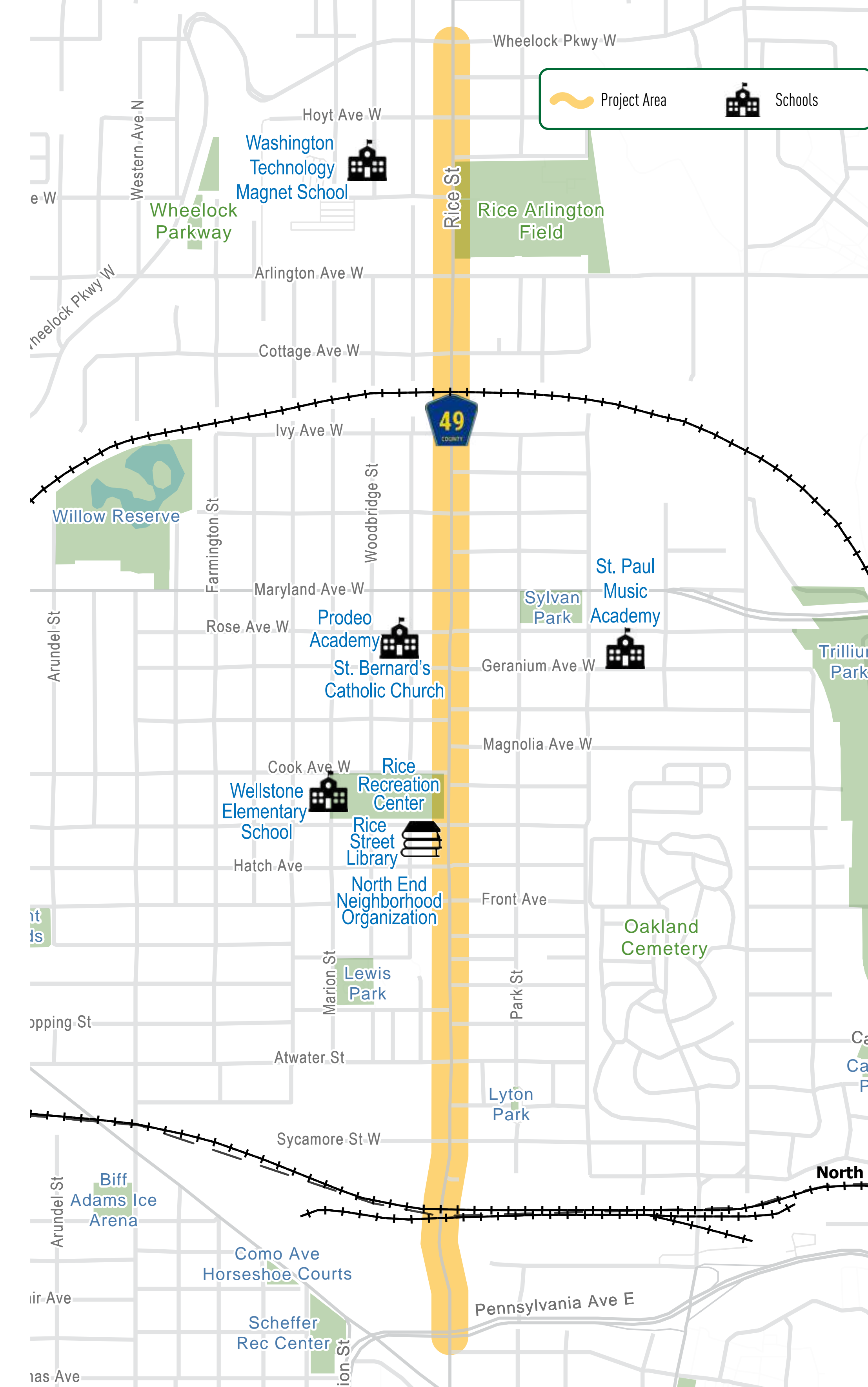
Refine recommended design
November 2022-July 2023



Share final design and discuss construction timeline
August 2023-December 2023

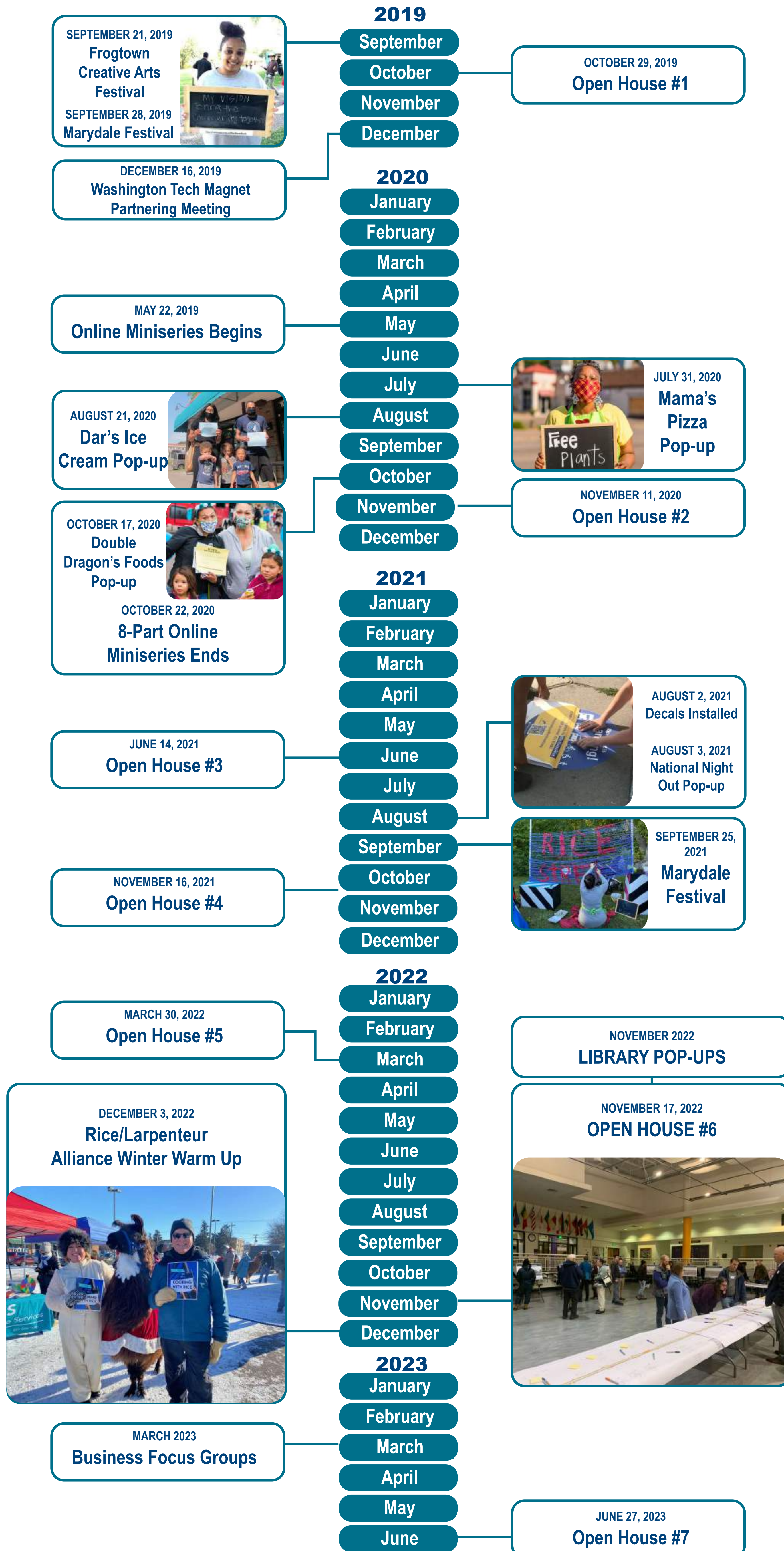
Raise awareness for construction
January 2024-June 2024

Construction!
June 2024 and beyond



Rice Street Visioning & Reconstruction

Engagement to Date



Rice Street Visioning & Reconstruction

Recommended design: shared use path



Key Elements

- ★ 3-lane roadway with 11-foot lanes and a 10-foot center turn lane
- ★ 6-foot sidewalk, 6-foot boulevards
- ★ 12-foot shared use side path

Community Priorities

- + More space for trees, plants, benches and more.
- + More flexibility to accommodate on-street parking.
- + More space to make a safe and vibrant environment.
- + Adds an important link to the city's bike network.
- + Separates bikes from cars to ensure higher level of safety.
- + Reduces pedestrian, bike and car crash rates.
- + Accommodates the planned G Line BRT transit project.

City & County Considerations

- Supports county's commitment to an all-abilities transportation network.
- More pedestrian and bicycle-focused use of space, consistent with city and county complete streets policies.
- More ability to accommodate snow storage, an important consideration for city maintenance purposes.

➔ **Did you know:** From 2019-2022, the project team and the community considered 7 designs before selecting the recommended design you see here!

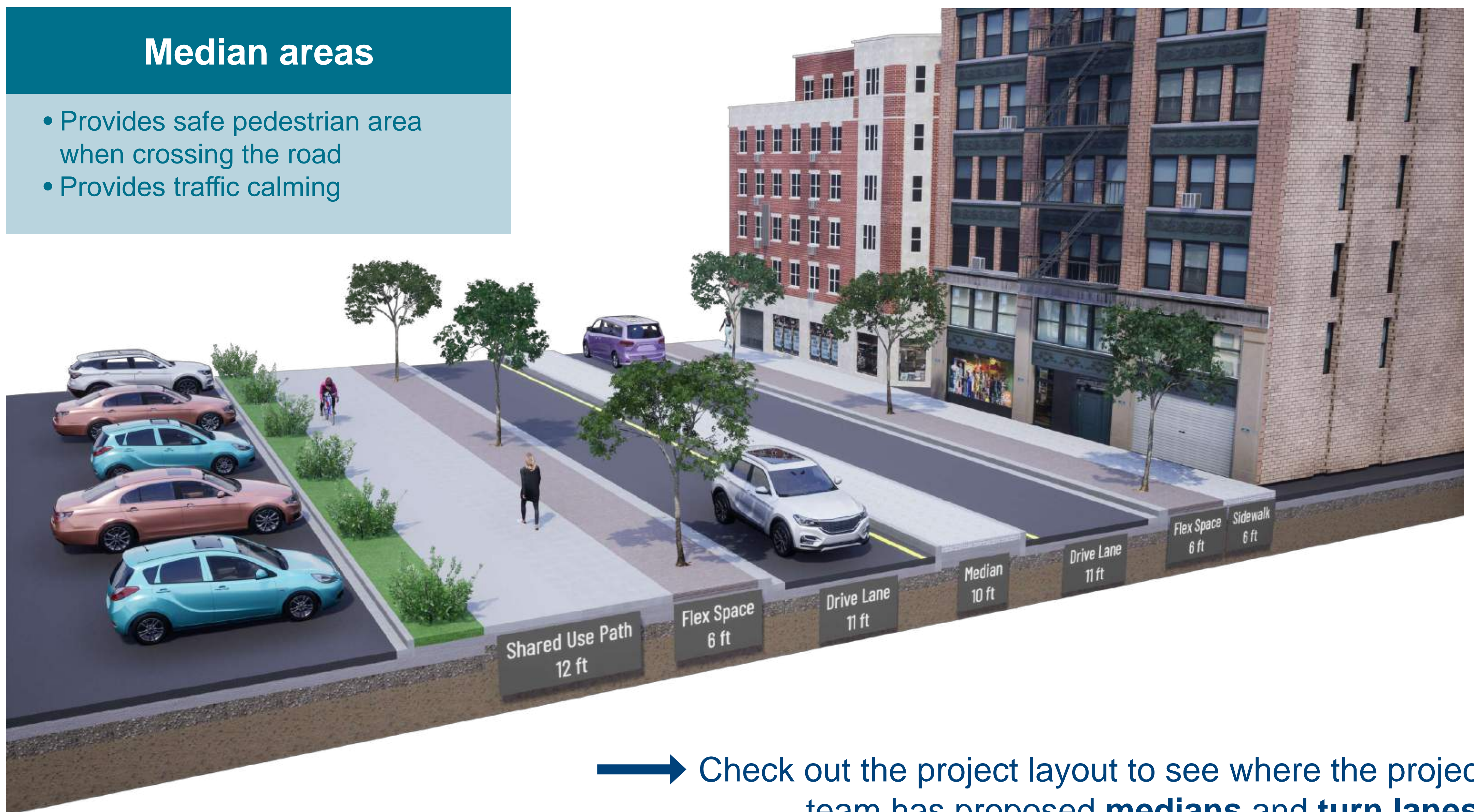
Rice Street Visioning & Reconstruction

Recommended design: turn lanes and medians

The center space of the roadway will vary throughout the project area. Depending on need and available space, some areas will have a median, and others will have center turn lanes.

Median areas

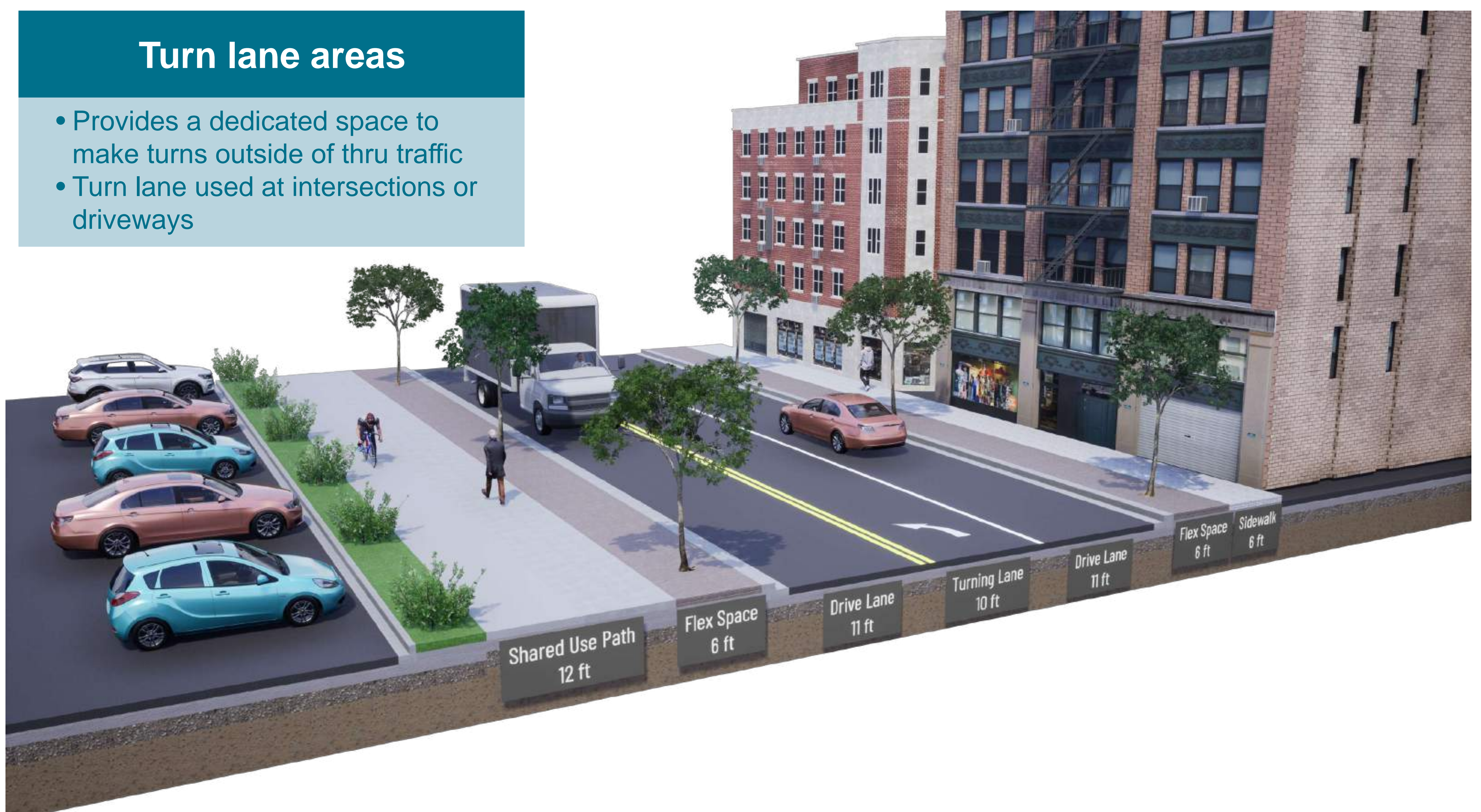
- Provides safe pedestrian area when crossing the road
- Provides traffic calming



→ Check out the project layout to see where the project team has proposed **medians** and **turn lanes**.

Turn lane areas

- Provides a dedicated space to make turns outside of thru traffic
- Turn lane used at intersections or driveways



Rice Street Visioning & Reconstruction

Parking on Rice Street

We recognize that parking is a critical subject, and that businesses, residents, and agencies have their own unique needs. The new design only allows for limited parking. We worked with the public to understand where parking was most needed.

Since our November 2022 open house...

- ★ Reviewed parking feedback from the November open house
- ★ Hosted 6 parking meetings via Zoom with businesses along Rice Street
- ★ Finalized parking space placement along Rice Street



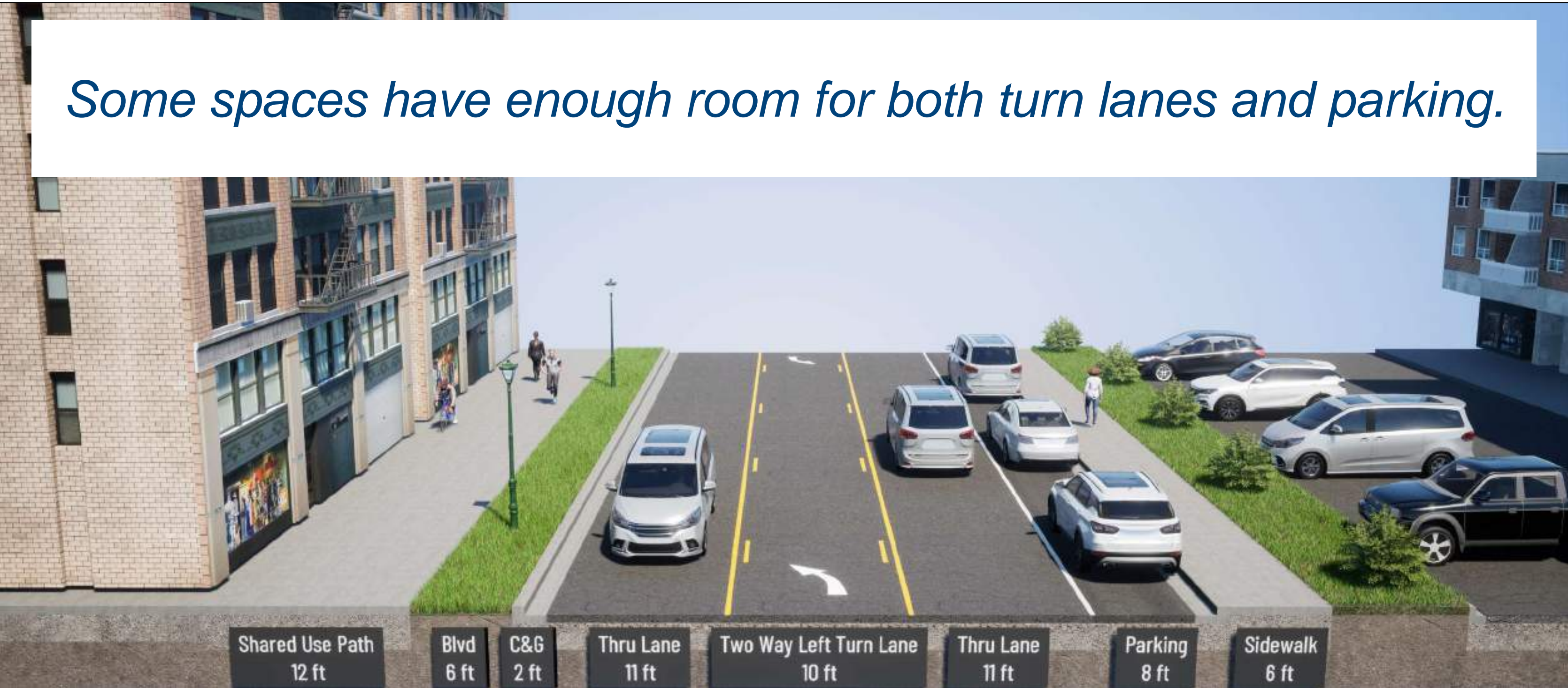
→ Check out the project layout to see where the project team has proposed **parking**.

Rice Street Visioning & Reconstruction

How did we decide where to put parking?

What did the engineering team need to consider when designing where to put parking?

Consideration #1: Parking availability ultimately comes down to fitting it within the project footprint.



Consideration #2:

The Rice Street roadway is at the end of its useful life. The road needs to be modernized. To meet current design and safety standards, ~40% of the parking spaces would be removed at minimum.

Per Minnesota State Statute, parking is not allowed...

- 5 feet from a driveway
- 10 feet from a fire hydrant
- 20 feet from a crosswalk
- 30 feet from an intersection
- 80 feet from a bus stop
- 50 feet from a railroad crossing
- Across from a T-intersection

Rice Street Visioning & Reconstruction

Future Parking on Rice Street

Why was parking reduced along Rice Street? On-street parking needs to meet modern design standards. In addition, the parking space will be re-purposed in order to fit the new pedestrian, bike, transit, and public realm facilities.

22
proposed
parking
spaces

Area 3 (Pennsylvania to Front)

5 parking stalls

- *East side of Rice Street Between Manitoba and Wayzata St*

Area 2 (Front to Maryland)

17 parking stalls

- *East side of Rice Street between Lawson Ave and Cook Ave*
- *West side of Rice Street between Cook Ave and Magnolia Ave*
- *East side of Rice Street between Magnolia Ave and Geranium Ave*

Area 1 (Maryland to Wheelock)

0 parking stalls



Check out the project layout to see where proposed parking is located.

Rice Street Visioning & Reconstruction

Construction

Business and property owner toolkit

The Rice Street project team is creating a toolkit as a resource for businesses and property owners seeking additional information and/or assistance during this time. This guide will be refreshed periodically throughout the project as new information becomes available. Check out some of the resources the guide will provide below!

People



Involving youth and community
Learn how to stay informed, as well as specific opportunities for youth



Jobs for area residents
Learn how to get the training you need to work on projects like Rice Street



Addressing traffic and public safety
Learn how new facilities will provide safer routes for all residents

Property



Improving your property
Access funding and guidance to improve your building and upgrade equipment



Redeveloping your property
Start planning and financing to transform your property



Taking care of utility connections
Learn about opportunities and resources to upgrade utility connections



Directing traffic during construction
See how and when traffic and access points will change



Parking and loading changes
Understand changes to on-street parking, during and after the construction period

Business



Business operations needs
Funding to support ongoing business operations



Financing and growing business
Find finance solutions to improve your or expand operations



General business advice
Get assistance needed to help make your business a success



Certifying your business to work on the project
Learn how to certify your business to contract on Rice Street and other projects

Share more about your business

We are seeking additional information on your business to understand how to accommodate you in the final design of the roadway and during construction. Please take the project survey in the link below.



Take the survey!

<http://s.alchemer.com/s3/Rice-Street-Business-Survey>

Stage 1: Maryland Ave. to Wheelock Pkwy.

Anticipated construction timeline: June - November 2024

Stage 2: Front St. to Maryland Ave.

Anticipated construction timeline: April - November 2025

Stage 3: Pennsylvania Ave. to Front St.

Anticipated construction timeline: April - November 2026

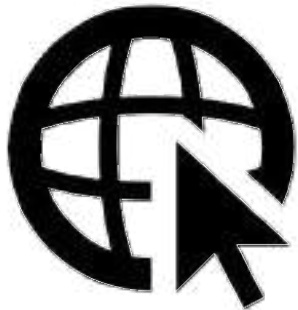
Rice Street Visioning & Reconstruction

Construction Communication

Several communication outlets will be utilized during construction to share current activities, impacts, and milestones with the public. The project team will ensure messaging is clear, consistent, and timely.



You



Website Updates

ramseycounty.us/RiceStreetStudy

Weekly updates, detour maps, staging information, and more will be found on the website.



Email Updates

ramseycounty.us/RiceStreetStudy

Sign up for project email updates on the project website!



Scan me and sign up for email updates!



Project Team



Facebook Posts

[@RamseyCountyMinnesota](https://www.facebook.com/RamseyCountyMinnesota)

Construction updates will be shared on Facebook.



Videos

Stay tuned!

The project team will develop a video about the construction timeline, closures, and detours before construction begins.

Rice Street Visioning & Reconstruction

Improvements for the boulevards along Rice Street

Place a sticker by the top two types of boulevard forms you would like to see on Rice Street!

PLANTED BOULEVARD



PROS:

- + Green stormwater management
- + Reduces heat from pavement
- + Pollinator habitat
- + Reduces amount of space that cannot absorb water
- + Separation between cars & pedestrians
- + High visual impact/beautification

CONS:

- Higher cost
- Higher maintenance requirements until established
- Reduced snow storage

TURF BOULEVARD



PROS:

- + Reduces amount of space that cannot absorb water
- + Minimal maintenance
- + Reduces heat from pavement

CONS:

- Low visual impact/beautification
- Low habitat area

HARDSCAPED BOULEVARD



PROS:

- + Low maintenance
- + Snow storage wont impact plants

CONS:

- Low visual impact/beautification
- No habitat area
- Higher heat due to pavement
- No stormwater impact

Rice Street Visioning & Reconstruction

Plantings for the boulevards along Rice Street

Place a sticker by the top two types of grasses, shrubs, and perennials you would like to see on Rice Street!

GRASSES



Feather Reed Grass



Prairie Dropseed



Switchgrass



SHRUBS



False Spirea



Gro-Low Fragrant Sumac

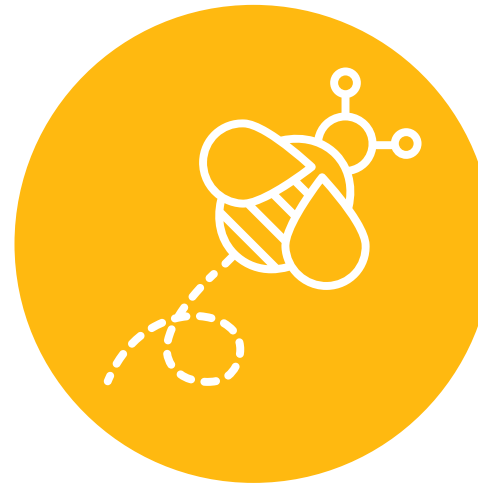
MINNESOTA NATIVE SPECIES



COMMUNITY INPUT SPECIES



POLLINATOR FRIENDLY SPECIES



PERENNIALS



Blue Flag Iris



Salvia



Butterfly Flower



Purple Coneflower



Fragrant Hyssop



Ornamental Onion



Smooth Blue Aster



Astilbe



Wild Bergamot



Canadian Anemone



Hosta



Golden Alexander



Wild Columbine



Sedum



Prairie Blazing Star



Black Eyed Susan



Creeping Thyme



Daylily



Solomon's Seal



Mint



Rice Street Visioning & Reconstruction

Street trees for the boulevards along Rice Street

Place a sticker by the top two types of canopy and ornamental trees you would like to see on Rice Street!

CANOPY TREES



Honey Locust



Ginkgo



Kentucky Coffeetree



Hophornbeam



American Elm



American Linden



American Yellowwood



Amur Corktree



Bitternut Hickory



Common Hackberry



Bluebeech



Horsechestnut



London Planetree



Swamp White Oak



River Birch



Sugar Maple



Northern Catalpa



Northern Pin Oak



ORNAMENTAL TREES



Japanese Tree Lilac



Serviceberry



Crabapple



Hawthorne



Amur Maackia



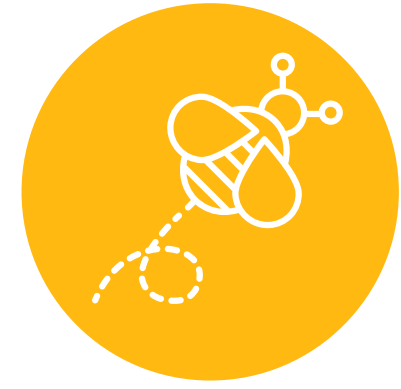
Ussurian Pear



MINNESOTA NATIVE SPECIES



COMMUNITY INPUT SPECIES



POLLINATOR FRIENDLY SPECIES

Rice Street Visioning & Reconstruction

Next steps for Rice Street

WE ARE
HERE

Refine recommended design
November 2022-July 2023

**Share final design and discuss
construction timeline**
August 2023-December 2023

Raise awareness for construction
January 2024-June 2024

Construction!
June 2024 and beyond

Stay involved!

Stay on the lookout for more events like this over the next year.



Scan me and sign up for email updates!



Shared Use Path
12 ft

Bldv
6 ft

Thru Lane
11 ft

Two Way Left Turn Lane
10 ft

Thru Lane
11 ft

Bldv
6 ft

Sidewalk
6 ft