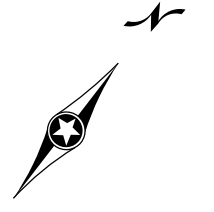
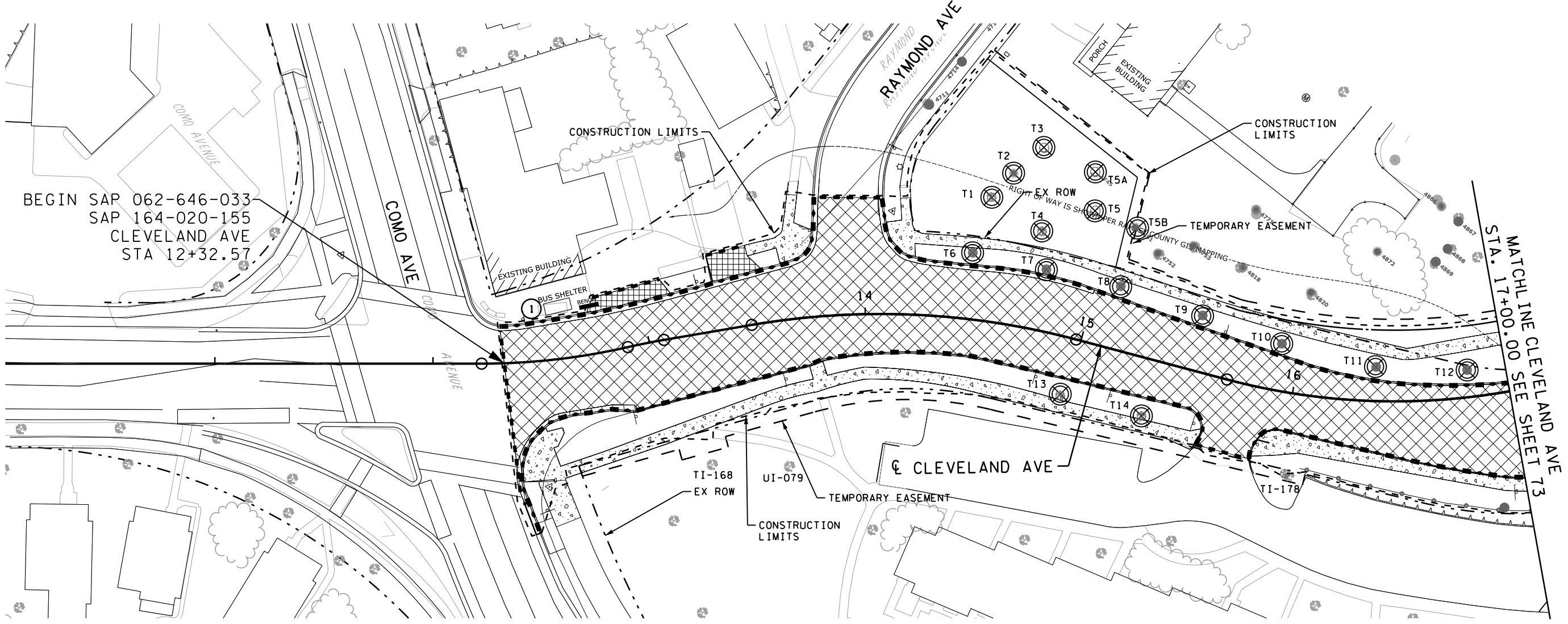


07/28/34

02/21/22



50
SCALE IN FEET



BEGIN SAP 062-646-033
SAP 164-020-155
CLEVELAND AVE
STA 12+32.57

MATCHLINE CLEVELAND AVE
STA. 17+00.00 SEE SHEET 73

TREE NUMBER	REASON FOR REMOVAL
T1	DRAINAGE BMP
T2	DRAINAGE BMP
T3	DRAINAGE BMP
T4	DRAINAGE BMP
T5	DRAINAGE BMP
T5A	DRAINAGE BMP
T5B	DRAINAGE BMP
T6	PROP SIDEWALK
T7	PROP SIDEWALK
T8	PROP SIDEWALK
T9	PROP SIDEWALK
T10	PROP ROADWAY
T11	PROP ROADWAY
T12	PROP ROADWAY
T13	PROP SIDEWALK
T14	PROP SIDEWALK

GENERAL REMOVAL NOTES
ENGINEER IN THE FIELD TO VERIFY TREE REMOVALS, SEE SPECS FOR DETAILS

CONTRACTOR TO PROTECT INPLACE TREES NOT REMOVED WITH TEMPORARY FENCE

SPECIFIC NOTES

① SAWCUT 1' OFF BACK OF CURB, PROTECT BUS SHELTER AND BENCH (INCIDENTAL)

LEGEND	
	REMOVE PAVEMENT
	REMOVE CURB & GUTTER
	SAWCUT (FULL DEPTH)
	REMOVE CONCRETE DRIVEWAY PAVEMENT
	REMOVE CONCRETE WALK
	REMOVE TREE (CLEAR AND GRUB) ENGINEER IN FIELD TO VERIFY TREE REMOVAL, SEE SPECIFICATIONS FOR DETAILS

DESIGN TEAM			
DRAWN BY:	TJC		
DESIGNER:	WDJ		
CHECKED BY:	WCK		
NO.	BY	DATE	REVISIONS

I hereby certify that this plan was prepared by me or under my direct supervision and that I am a duly Licensed Professional Engineer under the laws of the State of Minnesota.

Certified By: *Wade Johnson* Lic. No. 53129
Printed Name: WEAOLE DHANRAJ JOHNSON Date: 02/21/22



RAMSEY COUNTY, MINNESOTA
CLEVELAND AVE (CSAH 46)
RECONSTRUCTION

REMOVAL PLANS
STA 12+32.57 TO STA 17+00.00

CLEVELAND AVE
062-646-032
LARPENEUR AVE
062-630-071
ST. PAUL
164-020-155
FALCON HEIGHTS
124-020-007

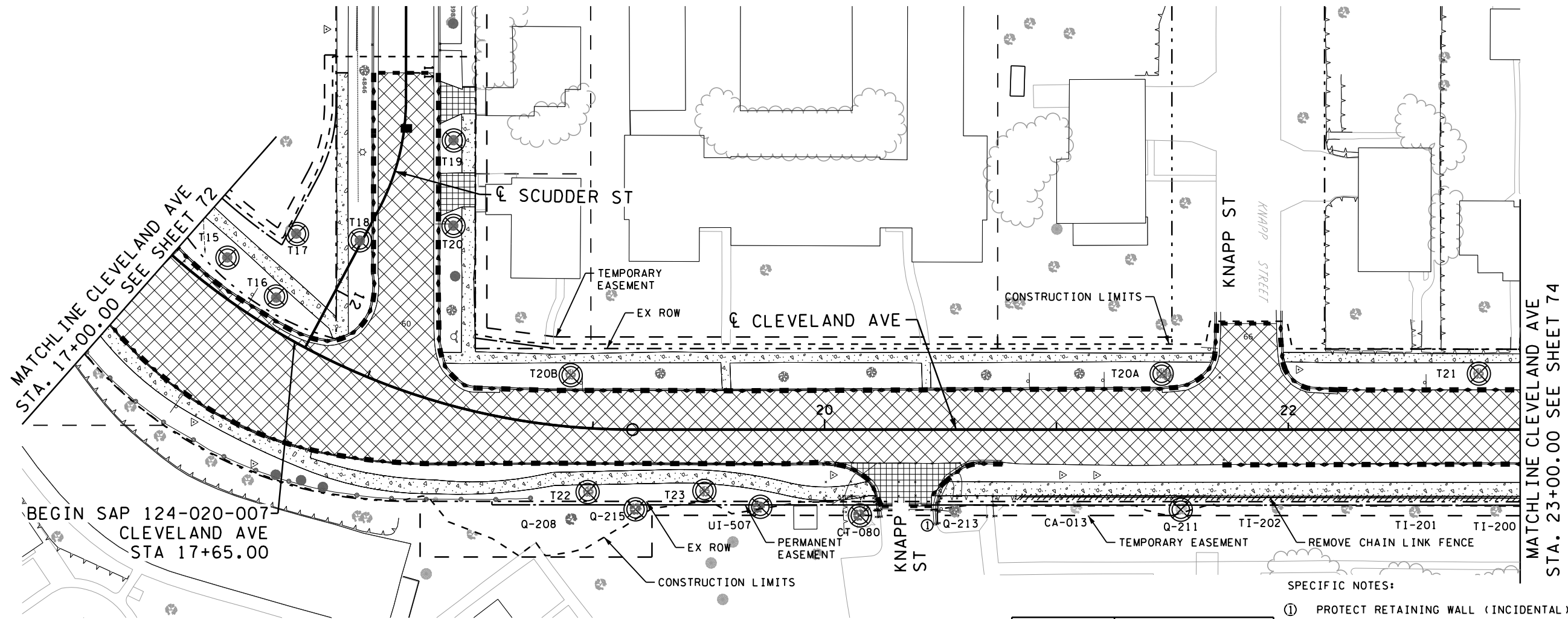
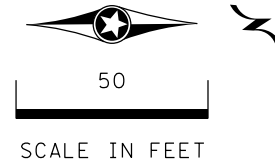
72
277

CD:\60553008_rem01.dgn

07/28/37

02/21/22

CD160553008_r.em02.dgn



MATCHLINE CLEVELAND AVE
STA. 17+00.00 SEE SHEET 72

BEGIN SAP 124-020-007
CLEVELAND AVE
STA 17+65.00

MATCHLINE CLEVELAND AVE
STA. 23+00.00 SEE SHEET 74

GENERAL REMOVAL NOTES
ENGINEER IN THE FIELD TO VERIFY TREE REMOVALS, SEE SPECS FOR DETAILS

CONTRACTOR TO PROTECT INPLACE TREES NOT REMOVED WITH TEMPORARY FENCE

SPECIFIC NOTES:
① PROTECT RETAINING WALL (INCIDENTAL)

TREE NUMBER	REASON FOR REMOVAL
T15	PROP ROADWAY
T16	PROP ROADWAY
T17	PROP SIDEWALK
T18	PROP ROADWAY
T19	PROP SIDEWALK
T20	PROP SIDEWALK
T20A	PROP SIDEWALK
T20B	ROADWAY SUBCUT
T21	PROP ROADWAY
T22	PROP TRAIL
T23	PROP TRAIL
Q-215	PROP TRAIL
UI-507	PROP TRAIL
CT-080	PROP TRAIL
Q-211	PROP TRAIL

LEGEND	
	REMOVE PAVEMENT
	REMOVE CURB & GUTTER
	SAWCUT (FULL DEPTH)
	REMOVE CONCRETE DRIVEWAY PAVEMENT
	REMOVE CONCRETE WALK
	REMOVE CHAIN LINK FENCE
	REMOVE TREE (CLEAR AND GRUB) ENGINEER IN FIELD TO VERIFY TREE REMOVAL, SEE SPECIFICATIONS FOR DETAILS

DESIGN TEAM			
DRAWN BY:	TJC		
DESIGNER:	WDJ		
CHECKED BY:	WCK		
NO.	BY	DATE	REVISIONS

I hereby certify that this plan was prepared by me or under my direct supervision and that I am a duly Licensed Professional Engineer under the laws of the State of Minnesota.
Certified By: *W. Johnson* Lic. No. 53129
Printed Name: OYEWOLE DHANRAJ JOHNSON Date: 02/21/22



RAMSEY COUNTY, MINNESOTA
CLEVELAND AVE (CSAH 46)
RECONSTRUCTION

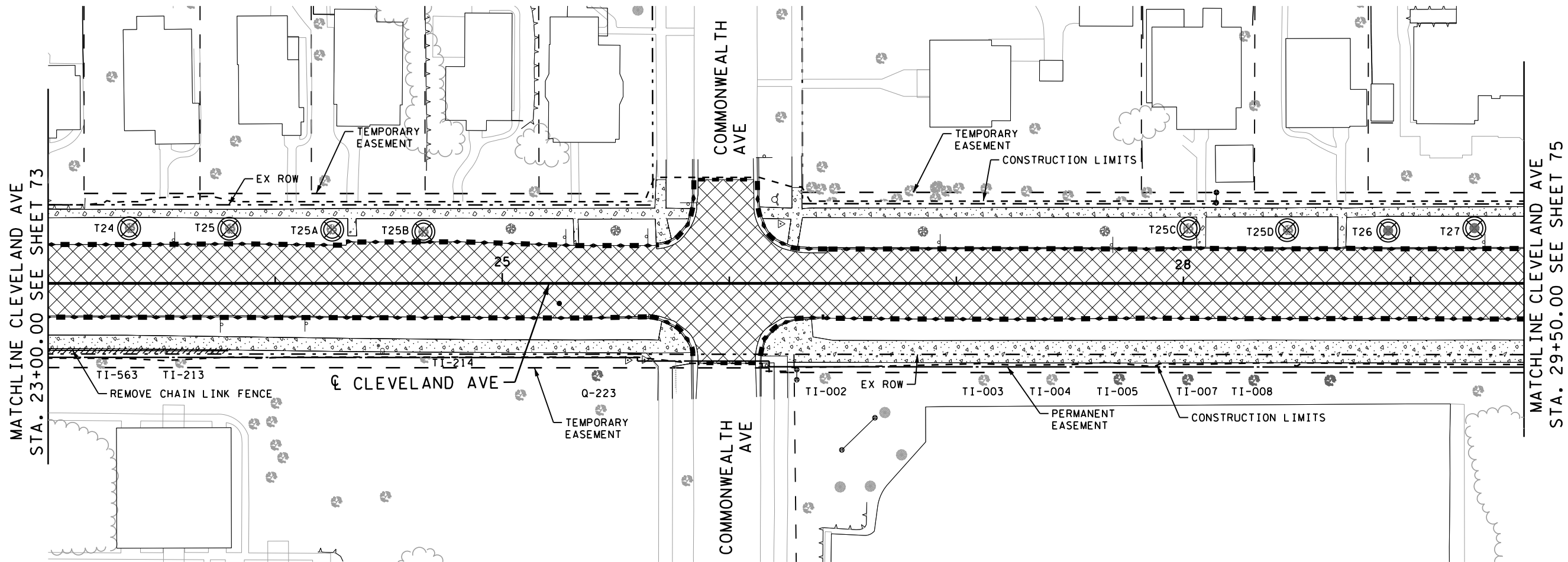
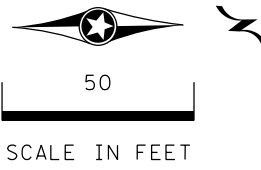
REMOVAL PLANS
STA 17+00.00 TO STA 23+00.00

CLEVELAND AVE
062-646-032
LARPENFEUR AVE
062-630-071
ST. PAUL
164-020-155
FALCON HEIGHTS
124-020-007
73
277

07/28/40

02/21/22

CD160553008_r.em03.dgn



GENERAL REMOVAL NOTES
 ENGINEER IN THE FIELD TO VERIFY TREE REMOVALS, SEE SPECS FOR DETAILS

CONTRACTOR TO PROTECT INPLACE TREES NOT REMOVED WITH TEMPORARY FENCE

TREE NUMBER	REASON FOR REMOVAL
T24	PROP ROADWAY
T25	PROP ROADWAY
T25A	SANITARY SERVICE
T25B	ROADWAY SUBCUT
T25C	ROADWAY SUBCUT
T25D	ROADWAY SUBCUT
T26	PROP ROADWAY
T27	PROP ROADWAY

LEGEND	
	REMOVE PAVEMENT
	REMOVE CURB & GUTTER
	SAWCUT (FULL DEPTH)
	REMOVE CONCRETE WALK
	REMOVE CHAIN LINK FENCE
	REMOVE TREE (CLEAR AND GRUB) ENGINEER IN FIELD TO VERIFY TREE REMOVAL, SEE SPECIFICATIONS FOR DETAILS

DESIGN TEAM			
DRAWN BY:	TJC		
DESIGNER:	WDJ		
CHECKED BY:	WCK		
NO.	BY	DATE	REVISIONS

I hereby certify that this plan was prepared by me or under my direct supervision and that I am a duly Licensed Professional Engineer under the laws of the State of Minnesota.

Certified By: *Wick Johnson* Lic. No. 53129
 Printed Name: OYEWOLE DHANRAJ JOHNSON Date: 02/21/22

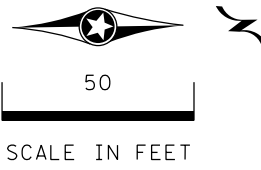


RAMSEY COUNTY, MINNESOTA
 CLEVELAND AVE (CSAH 46)
 RECONSTRUCTION

REMOVAL PLANS
 STA 23+00.00 TO STA 29+50.00

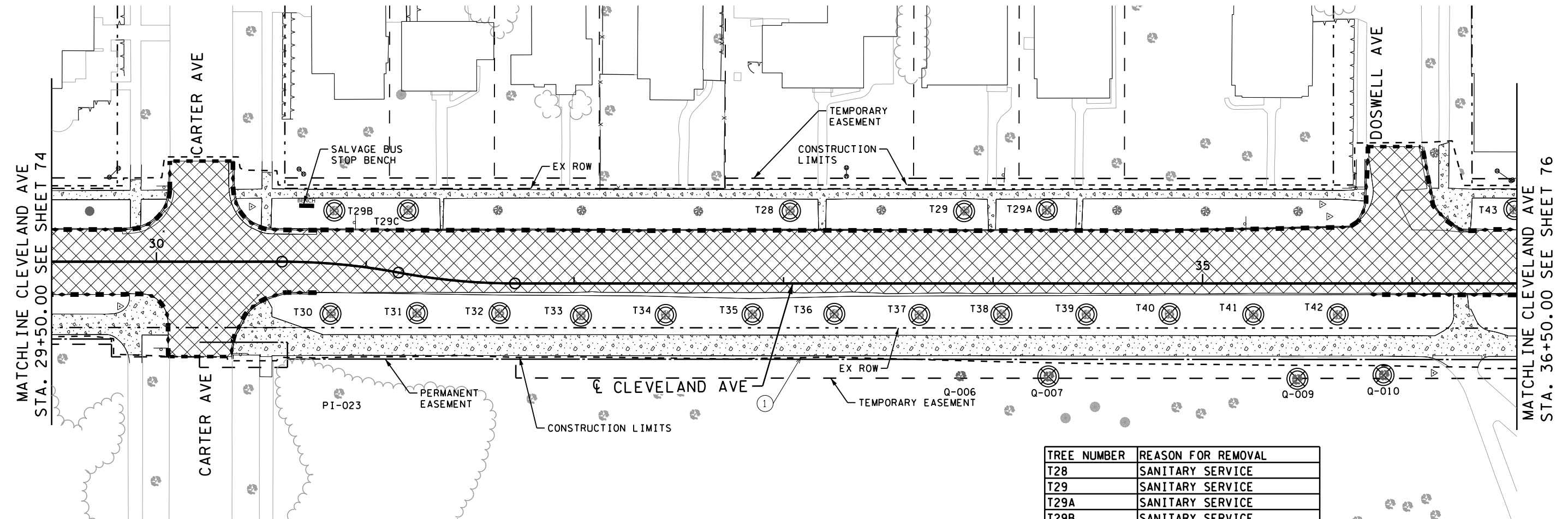
CLEVELAND AVE
 062-646-032
 LARPELLEUR AVE
 062-630-071
 ST. PAUL
 164-020-155
 FALCON HEIGHTS
 124-020-007

74
277



07:30:13

02/21/22



TREE NUMBER	REASON FOR REMOVAL
T28	SANITARY SERVICE
T29	SANITARY SERVICE
T29A	SANITARY SERVICE
T29B	SANITARY SERVICE
T29C	SANITARY SERVICE
T30	PROP TRAIL
T31	PROP ROADWAY
T32	PROP ROADWAY
T33	PROP ROADWAY
T34	PROP ROADWAY
T35	PROP ROADWAY
T36	PROP ROADWAY
T37	PROP ROADWAY
T38	PROP ROADWAY
T39	PROP ROADWAY
T40	PROP ROADWAY
T41	PROP ROADWAY
T42	PROP ROADWAY
T43	PROP SIDEWALK
Q-007	PROP INFILTRATION BASIN
Q-009	PROP INFILTRATION BASIN
Q-010	PROP INFILTRATION BASIN

GENERAL REMOVAL NOTES
 ENGINEER IN THE FIELD TO VERIFY TREE REMOVALS, SEE SPECS FOR DETAILS
 CONTRACTOR TO PROTECT INPLACE TREES NOT REMOVED WITH TEMPORARY FENCE

- SPECIFIC NOTES:**
- PROTECT OR RELOCATE EXISTING IRRIGATION SYSTEM IN COORDINATION WITH UMN LANDCARE.

LEGEND

- REMOVE PAVEMENT
- REMOVE CURB & GUTTER
- SAWCUT (FULL DEPTH)
- REMOVE CONCRETE WALK
- REMOVE TREE (CLEAR AND GRUB)
ENGINEER IN FIELD TO VERIFY TREE REMOVAL, SEE SPECIFICATIONS FOR DETAILS

DESIGN TEAM				
DRAWN BY:	TJC			
DESIGNER:	WDJ			
CHECKED BY:	WCK			
	NO.	BY	DATE	REVISIONS

I hereby certify that this plan was prepared by me or under my direct supervision and that I am a duly Licensed Professional Engineer under the laws of the State of Minnesota.
 Certified By: *Wade Johnson* Lic. No. 53129
 Printed Name: OYEWOLE DHANRAJ JOHNSON Date: 02/21/22



RAMSEY COUNTY, MINNESOTA
 CLEVELAND AVE (CSAH 46)
 RECONSTRUCTION

REMOVAL PLANS
 STA 29+50.00 TO STA 36+50.00

CLEVELAND AVE
 062-646-032
 LARPELLEUR AVE
 062-630-071
 ST. PAUL
 164-020-155
 FALCON HEIGHTS
 124-020-007

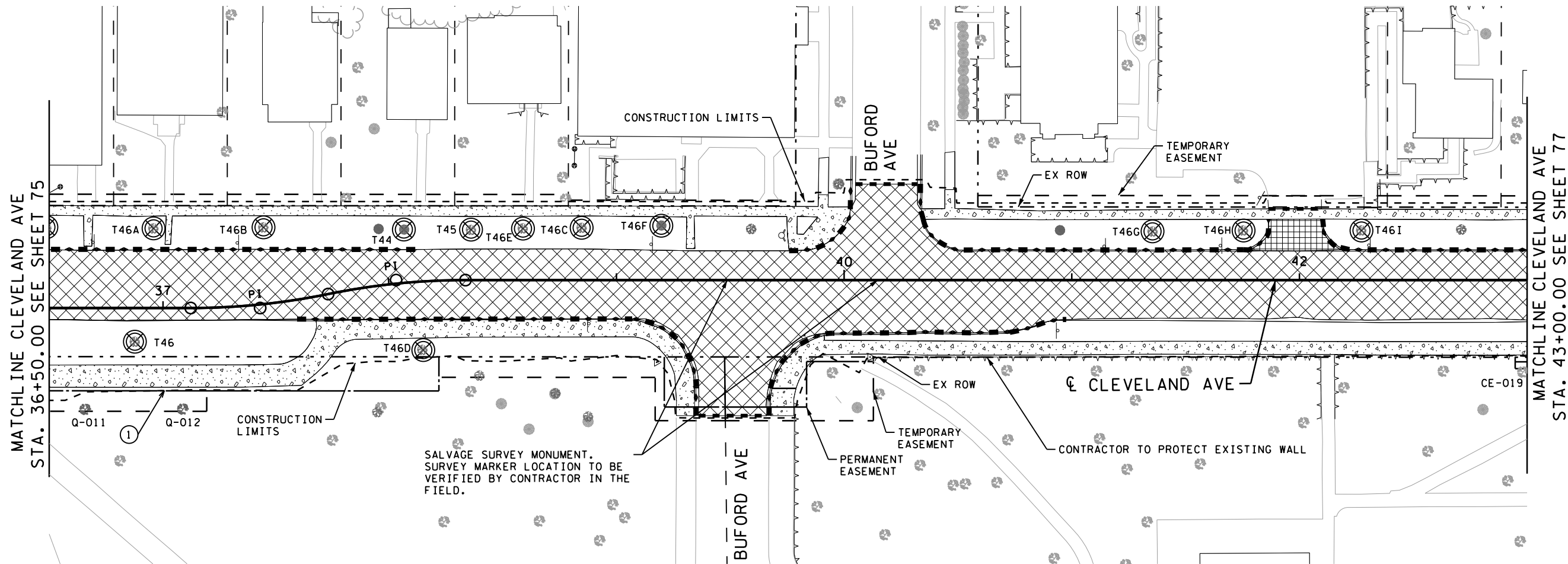
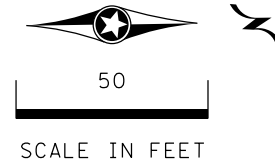
75
277

CD:160553008_r_em04.dgn

07:30:16

02/21/22

CD:160553008_r.em05.dgn



MATCHLINE CLEVELAND AVE
STA. 36+50.00 SEE SHEET 75

MATCHLINE CLEVELAND AVE
STA. 43+00.00 SEE SHEET 77

GENERAL REMOVAL NOTES
ENGINEER IN THE FIELD TO VERIFY TREE REMOVALS, SEE SPECS FOR DETAILS

CONTRACTOR TO PROTECT INPLACE TREES NOT REMOVED WITH TEMPORARY FENCE

SPECIFIC NOTES:

① PROTECT OR RELOCATE EXISTING IRRIGATION SYSTEM IN COORDINATION WITH UMN LANDCARE.

TREE NUMBER	REASON FOR REMOVAL
T44	PROP ROADWAY
T45	PROP ROADWAY
T46	PROP ROADWAY
T46A	SANITARY SERVICE
T46B	SANITARY SERVICE
T46C	ROADWAY SUBCUT
T46D	PROP TRAIL
T46E	SANITARY SERVICE
T46F	ROADWAY SUBCUT
T46G	ROADWAY SUBCUT
T46H	ROADWAY SUBCUT
T46I	ROADWAY SUBCUT

LEGEND	
	REMOVE PAVEMENT
	REMOVE CURB & GUTTER
	SAWCUT (FULL DEPTH)
	REMOVE CONCRETE DRIVEWAY PAVEMENT
	REMOVE CONCRETE WALK
	REMOVE TREE (CLEAR AND GRUB) ENGINEER IN FIELD TO VERIFY TREE REMOVAL, SEE SPECIFICATIONS FOR DETAILS

DESIGN TEAM	NO.	BY	DATE	REVISIONS
DRAWN BY: TJC				
DESIGNER: WDJ				
CHECKED BY: WCK				

I hereby certify that this plan was prepared by me or under my direct supervision and that I am a duly Licensed Professional Engineer under the laws of the State of Minnesota.

Certified By: *Wick Johnson* Lic. No. 53129
Printed Name: WYEWOLE DHANRAJ JOHNSON Date: 02/21/22



RAMSEY COUNTY, MINNESOTA
CLEVELAND AVE (CSAH 46)
RECONSTRUCTION

REMOVAL PLANS
STA 36+50.00 TO STA 43+00.00

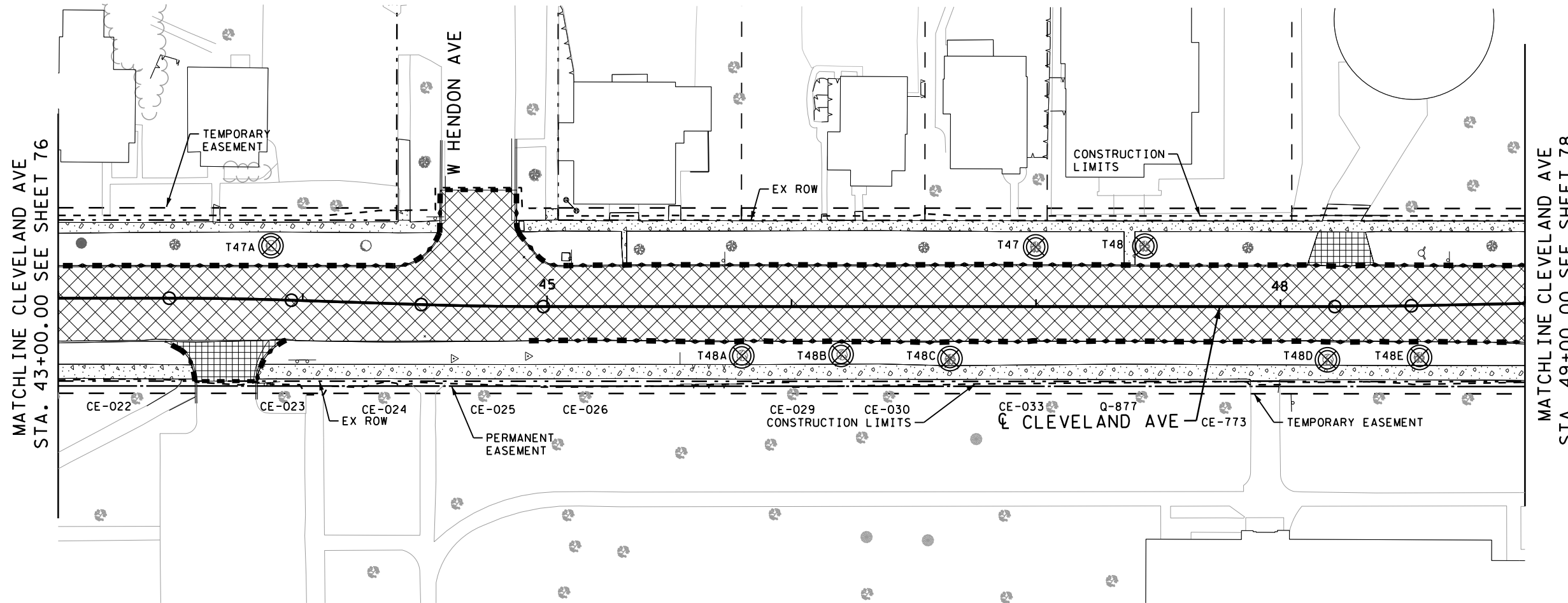
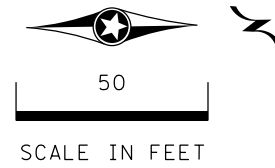
CLEVELAND AVE
062-646-032
LARPENTEUR AVE
062-630-071
ST. PAUL
164-020-155
FALCON HEIGHTS
124-020-007

76
277

07:30:18

02/21/22

CD:160553008_r.em06.dgn



GENERAL REMOVAL NOTES
 ENGINEER IN THE FIELD TO VERIFY TREE REMOVALS, SEE SPECS FOR DETAILS

CONTRACTOR TO PROTECT INPLACE TREES NOT REMOVED WITH TEMPORARY FENCE

TREE NUMBER	REASON FOR REMOVAL
T47	PROP ROADWAY
T47A	ROADWAY SUBCUT
T48	PROP ROADWAY
T48A	PROP STORM SEWER
T48B	PROP STORM SEWER
T48C	PROP STORM SEWER
T48D	GRADING
T48E	GRADING

LEGEND	
	REMOVE PAVEMENT
	REMOVE CURB & GUTTER
	SAWCUT (FULL DEPTH)
	REMOVE CONCRETE DRIVEWAY PAVEMENT
	REMOVE CONCRETE WALK
	REMOVE TREE (CLEAR AND GRUB) ENGINEER IN FIELD TO VERIFY TREE REMOVAL, SEE SPECIFICATIONS FOR DETAILS

DESIGN TEAM			
DRAWN BY:	TJC		
DESIGNER:	WDJ		
CHECKED BY:	WCK		
NO.	BY	DATE	REVISIONS

I hereby certify that this plan was prepared by me or under my direct supervision and that I am a duly Licensed Professional Engineer under the laws of the State of Minnesota.
 Certified By: *W. Johnson* Lic. No. 53129
 Printed Name: OYEWOLE DHANRAJ JOHNSON Date: 02/21/22



RAMSEY COUNTY, MINNESOTA
 CLEVELAND AVE (CSAH 46)
 RECONSTRUCTION

REMOVAL PLANS
 STA 43+00.00 TO STA 49+00.00

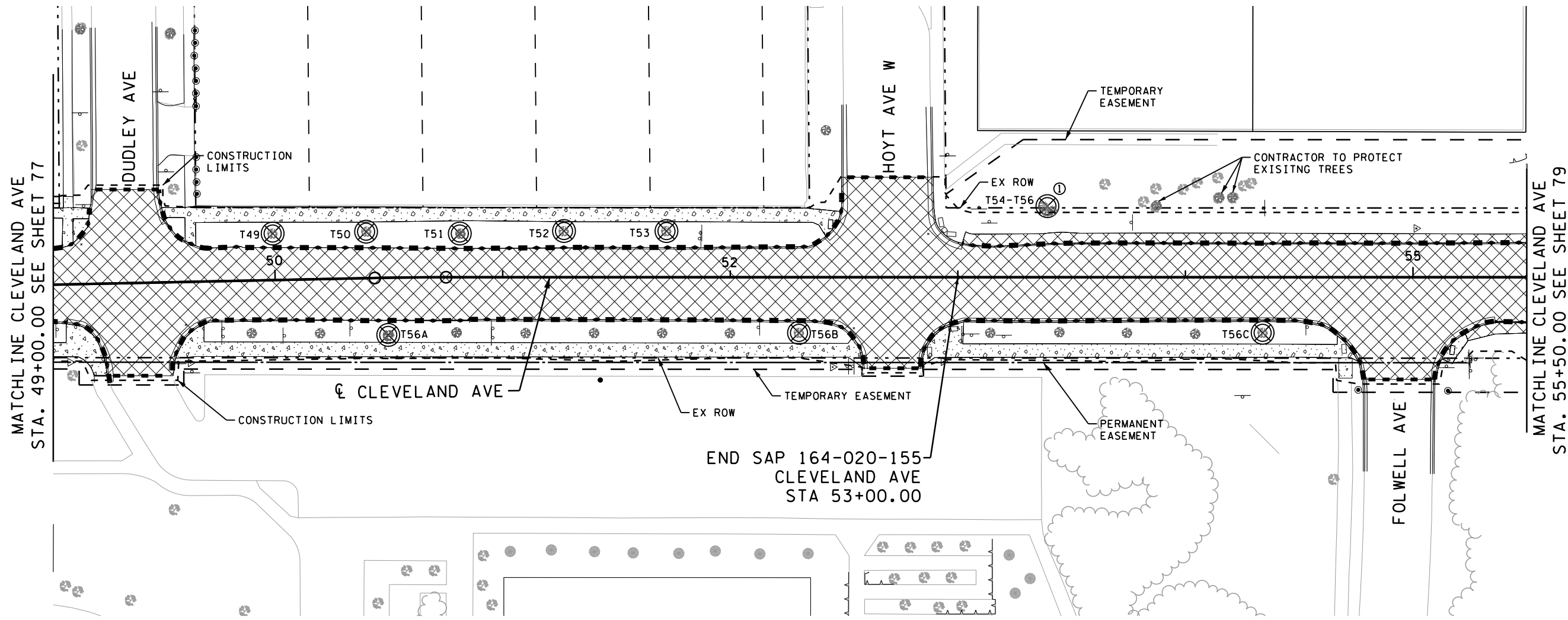
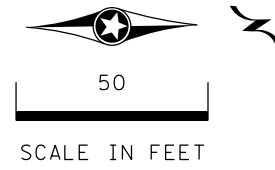
CLEVELAND AVE
 062-646-032
 LARPEUTEUR AVE
 062-630-071
 ST. PAUL
 164-020-155
 FALCON HEIGHTS
 124-020-007

77
277

07:30:21

02/21/22

CD:160553008_r.em07.dgn



GENERAL REMOVAL NOTES
 ENGINEER IN THE FIELD TO VERIFY TREE REMOVALS, SEE SPECS FOR DETAILS

CONTRACTOR TO PROTECT INPLACE TREES NOT REMOVED WITH TEMPORARY FENCE

SPECIFIC NOTES:
 ① INCLUDES (3) CLOSELY SPACED TREES

TREE NUMBER	REASON FOR REMOVAL
T49	PROP ROADWAY
T50	PROP ROADWAY
T51	PROP ROADWAY
T52	PROP ROADWAY
T53	PROP ROADWAY
T54	PROP SIDEWALK
T55	PROP SIDEWALK
T56	PROP SIDEWALK
T56A	GRADING
T56B	PROP STORM SEWER
T56C	PROP STORM SEWER

LEGEND	
	REMOVE PAVEMENT
	REMOVE CURB & GUTTER
	SAWCUT (FULL DEPTH)
	REMOVE CONCRETE WALK
	REMOVE TREE (CLEAR AND GRUB) ENGINEER IN FIELD TO VERIFY TREE REMOVAL, SEE SPECIFICATIONS FOR DETAILS

DESIGN TEAM	NO.	BY	DATE	REVISIONS
DRAWN BY: TJC				
DESIGNER: WDJ				
CHECKED BY: WCK				

I hereby certify that this plan was prepared by me or under my direct supervision and that I am a duly Licensed Professional Engineer under the laws of the State of Minnesota.
 Certified By: *W. Johnson* Lic. No. 53129
 Printed Name: OYEWOLE DHANRAJ JOHNSON Date: 02/21/22



RAMSEY COUNTY, MINNESOTA
 CLEVELAND AVE (CSAH 46)
 RECONSTRUCTION

REMOVAL PLANS
 STA 49+00.00 TO STA 55+50.00

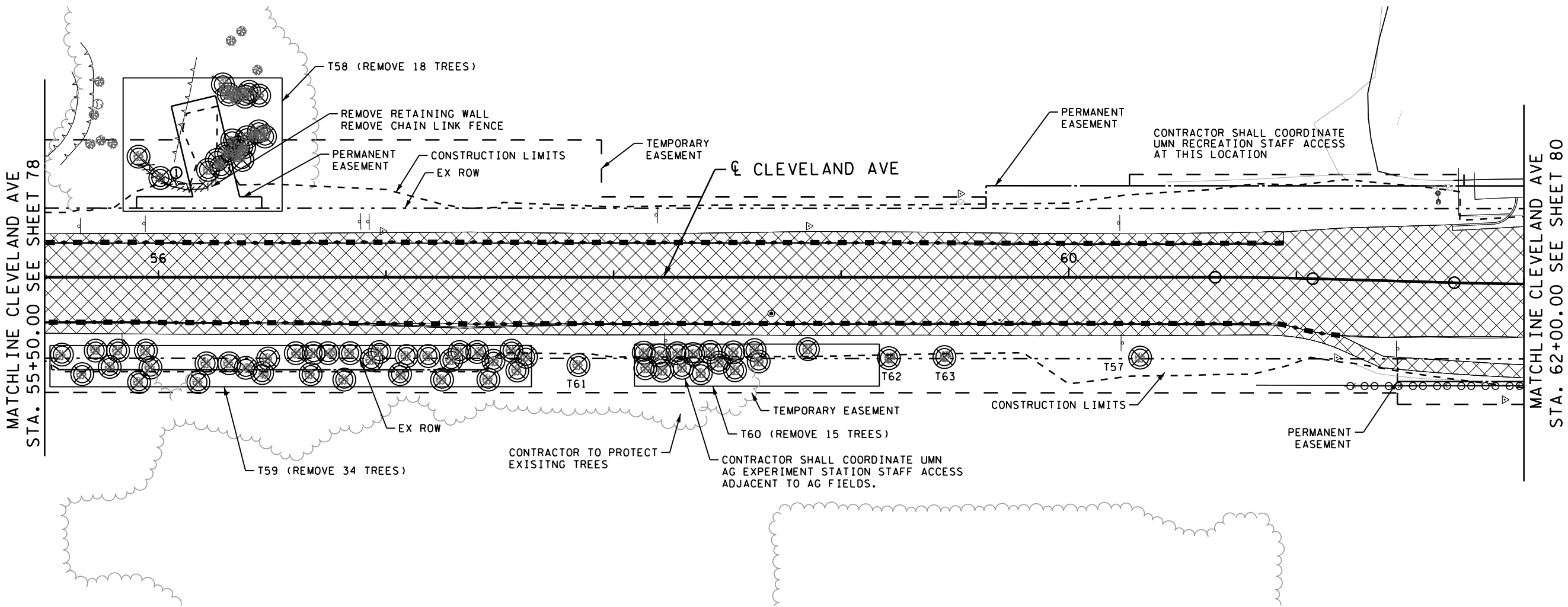
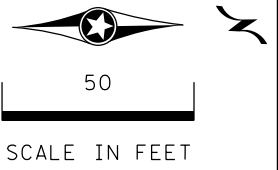
CLEVELAND AVE 062-646-032
 LARPEUTEUR AVE 062-630-071
 ST. PAUL 164-020-155
 FALCON HEIGHTS 124-020-007

78
277

07:31:51

02/21/22

CD160553008_r.em08.dgn



GENERAL REMOVAL NOTES
 ENGINEER IN THE FIELD TO VERIFY TREE REMOVALS, SEE SPECS FOR DETAILS

CONTRACTOR TO PROTECT INPLACE TREES NOT REMOVED WITH TEMPORARY FENCE

TREE NUMBER	REASON FOR REMOVAL
T57	PROP TRAIL
T58 (18 TREES)	PROP RET WALL/STORM
T59 (34 TREES)	PROP RET WALL
T60 (15 TREES)	PROP INFILTRATION BASIN
T61	GRADING
T62	GRADING
T63	GRADING

SPECIFIC NOTE:
 ① CONTRACTOR TO PROTECT INPLACE DRAIN PIPES (INCIDENTAL)

LEGEND	
	REMOVE PAVEMENT
	REMOVE CURB & GUTTER
	REMOVE RETAINING WALL
	REMOVE CHAIN LINK FENCE
	REMOVE FENCE
	REMOVE TREE (CLEAR AND GRUB) ENGINEER IN FIELD TO VERIFY TREE REMOVAL, SEE SPECIFICATIONS FOR DETAILS

DESIGN TEAM			
DRAWN BY:	TJC		
DESIGNER:	WDJ		
CHECKED BY:	WCK		
NO.	BY	DATE	REVISIONS

I hereby certify that this plan was prepared by me or under my direct supervision and that I am a duly Licensed Professional Engineer under the laws of the State of Minnesota.

Certified By: *Wick Johnson* Lic. No. 53129
 Printed Name: OYEWOLE DHANRAJ JOHNSON Date: 02/21/22



RAMSEY COUNTY, MINNESOTA
 CLEVELAND AVE (CSAH 46)
 RECONSTRUCTION

REMOVAL PLANS
 STA 55+50.00 TO STA 62+00.00

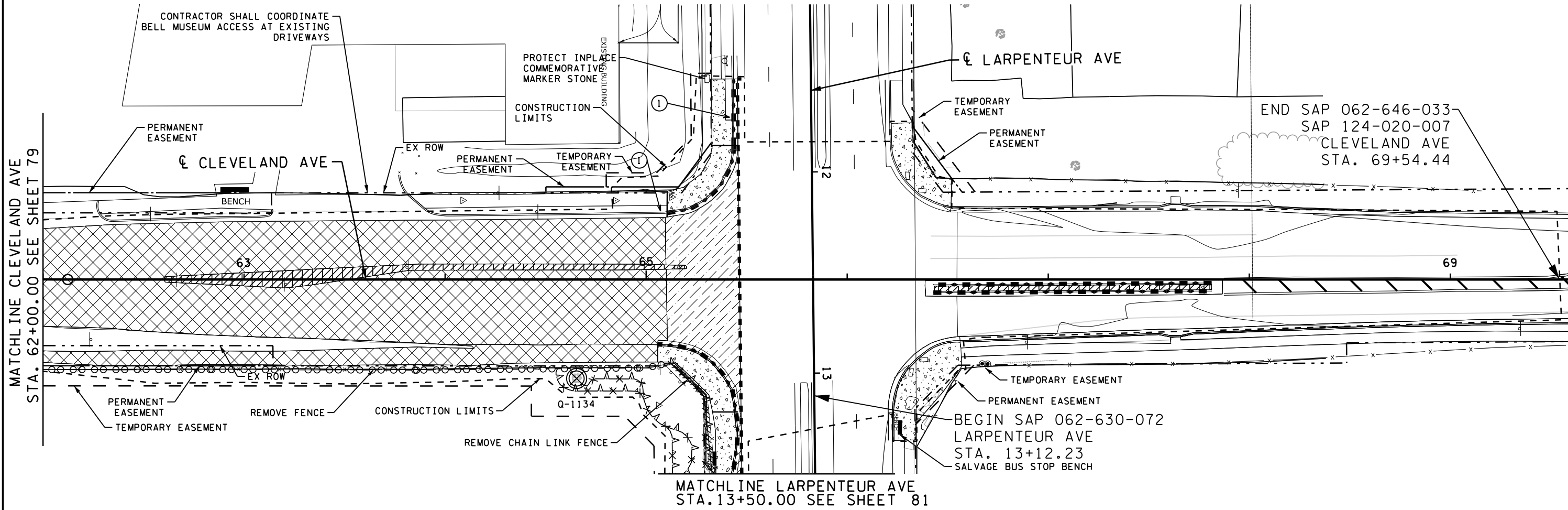
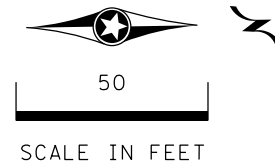
CLEVELAND AVE
 062-646-032
 LARPELLEUR AVE
 062-630-071
 ST. PAUL
 164-020-155
 FALCON HEIGHTS
 124-020-007

79
277

07:31:54

02/21/22

CD:160553008_r_em09.dgn



LEGEND

	REMOVE PAVEMENT
	REMOVE CURB & GUTTER
	SAWCUT (FULL DEPTH)
	REMOVE CONCRETE WALK
	REMOVE CONCRETE MEDIAN
	REMOVE CONCRETE PAVEMENT
	REMOVE RETAINING WALL
	REMOVE CHAIN LINK FENCE
	REMOVE FENCE
	REMOVE TREE (CLEAR AND GRUB) ENGINEER IN FIELD TO VERIFY TREE REMOVAL, SEE SPECIFICATIONS FOR DETAILS

GENERAL REMOVAL NOTES
ENGINEER IN THE FIELD TO VERIFY TREE REMOVALS, SEE SPECS FOR DETAILS

CONTRACTOR TO PROTECT INPLACE TREES NOT REMOVED WITH TEMPORARY FENCE

TREE NUMBER	REASON FOR REMOVAL
Q-1134	RET WALL REMOVAL

SPECIFIC NOTES:
1. PROTECT OR RELOCATE EXISTING IRRIGATION SYSTEM IN COORDINATION WITH UMN LANDCARE.

DESIGN TEAM	NO.	BY	DATE	REVISIONS
DRAWN BY: TJC				
DESIGNER: WDJ				
CHECKED BY: WCK				

I hereby certify that this plan was prepared by me or under my direct supervision and that I am a duly Licensed Professional Engineer under the laws of the State of Minnesota.
Certified By: *Wade Johnson* Lic. No. 53129
Printed Name: **OYEWOLE DHANRAJ JOHNSON** Date: 02/21/22



RAMSEY COUNTY, MINNESOTA
**CLEVELAND AVE (CSAH 46)
RECONSTRUCTION**

REMOVAL PLANS
CLEVELAND AVE STA 62+00.00 TO STA 69+54.44
LARPENTUER AVE STA 10+00.00 TO STA 13+50.00

CLEVELAND AVE 062-646-032
LARPENTUER AVE 062-630-071
ST. PAUL 164-020-155
FALCON HEIGHTS 124-020-007
80
277