

Lake Johanna Boulevard Roadway and Trail Design Study

Virtual Open House | March 1, 2022

Introductions

- Scott Mareck, Ramsey County Public Works, Project Manager
- Greg Brown, Kimley-Horn

Agency Partners


- David Swearingen, City of Arden Hills, Public Works Director
- Scott Yonke, Ramsey County Parks
- Connie Bernardy, Active Living Ramsey Communities
- Rich Straumann, Active Living Ramsey Communities
- Gene Gjerdingen, Active Living Ramsey Communities

Welcome to the Lake Johanna Boulevard Trail Open House

Agenda

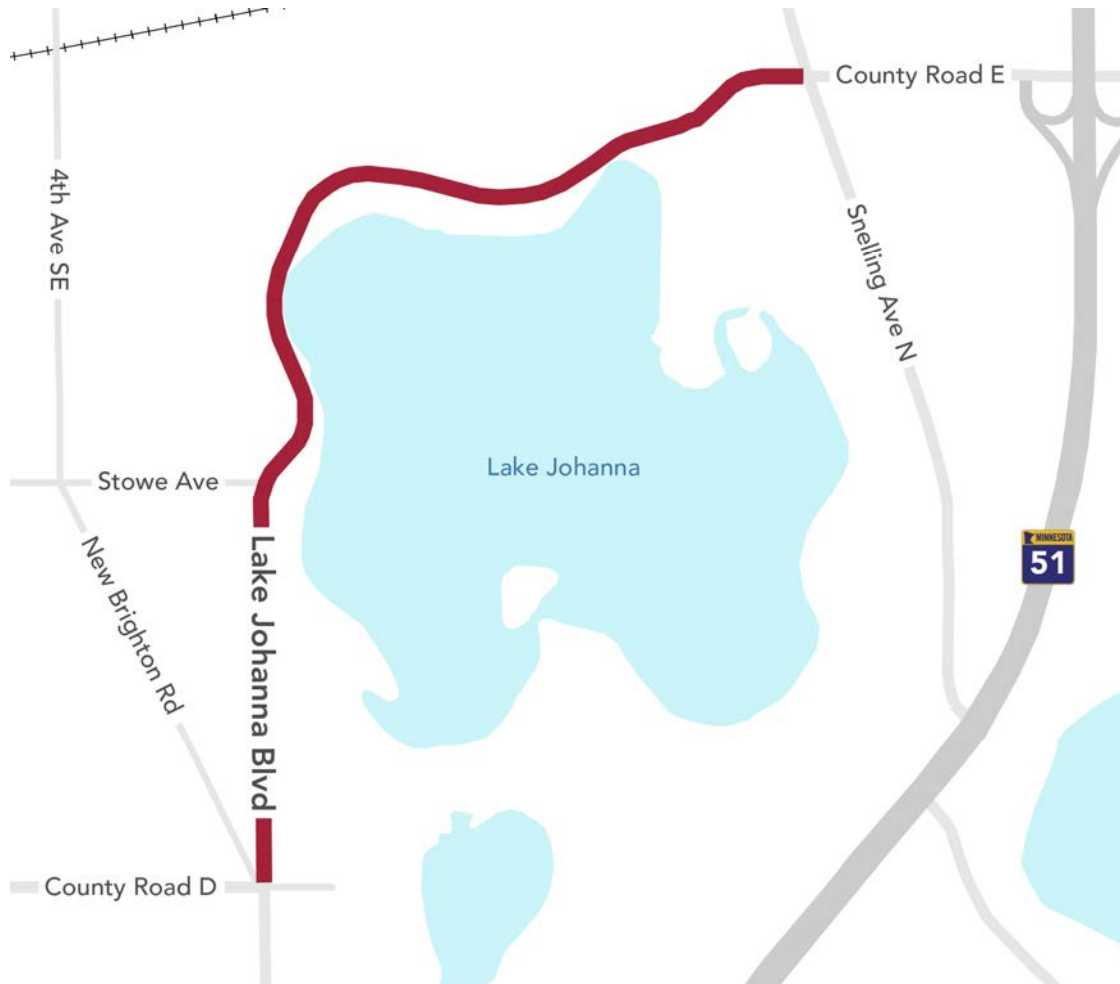
- How to share feedback/ask questions
- Project overview
- Project goals
- Draft conceptual trail designs
- Intersection design considerations
- Schedule and next steps
- Question and answer

Q&A Instructions

- **On the Web Version:**
 - Click the **“Ask a question”** button (lower right corner of the window) to submit a question to the project team at any point during the presentation. You can also check the box to “ask anonymously”.
- **On the Mobile Version:**
 - Select **Q&A**  on the upper right side of the screen to view the question box.
 - Same steps as above.

NOTE: For both web and mobile version, if you lose audio check to see if you’ve paused the live meeting.

Project Overview

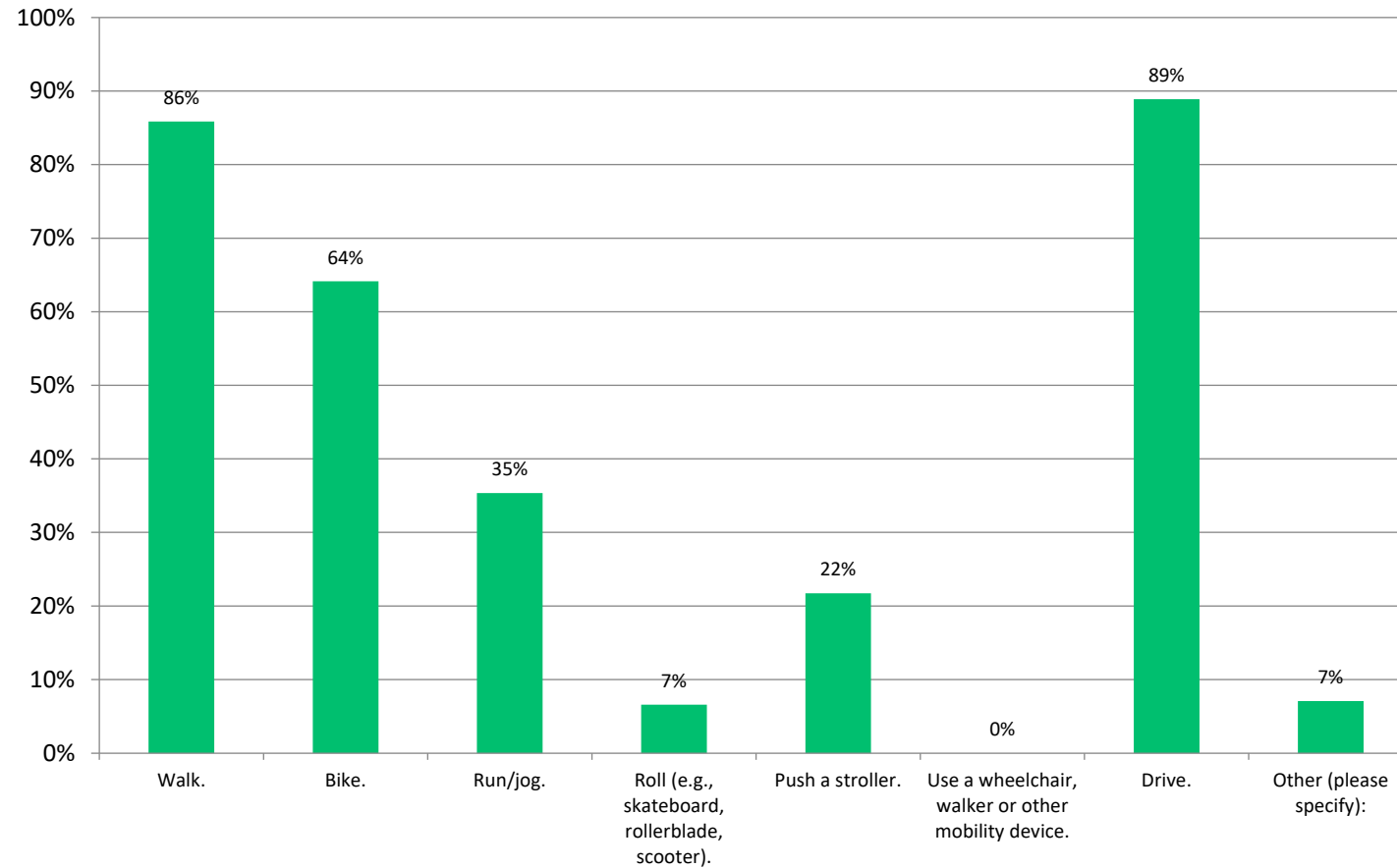


- The Lake Johanna Boulevard Corridor has significant bicycle and pedestrian traffic, but currently there is no sidewalk or separated trail facility along the corridor.
- The purpose of this study is to identify design concepts that can safely and adequately accommodate pedestrians and bicyclists today and into the future.

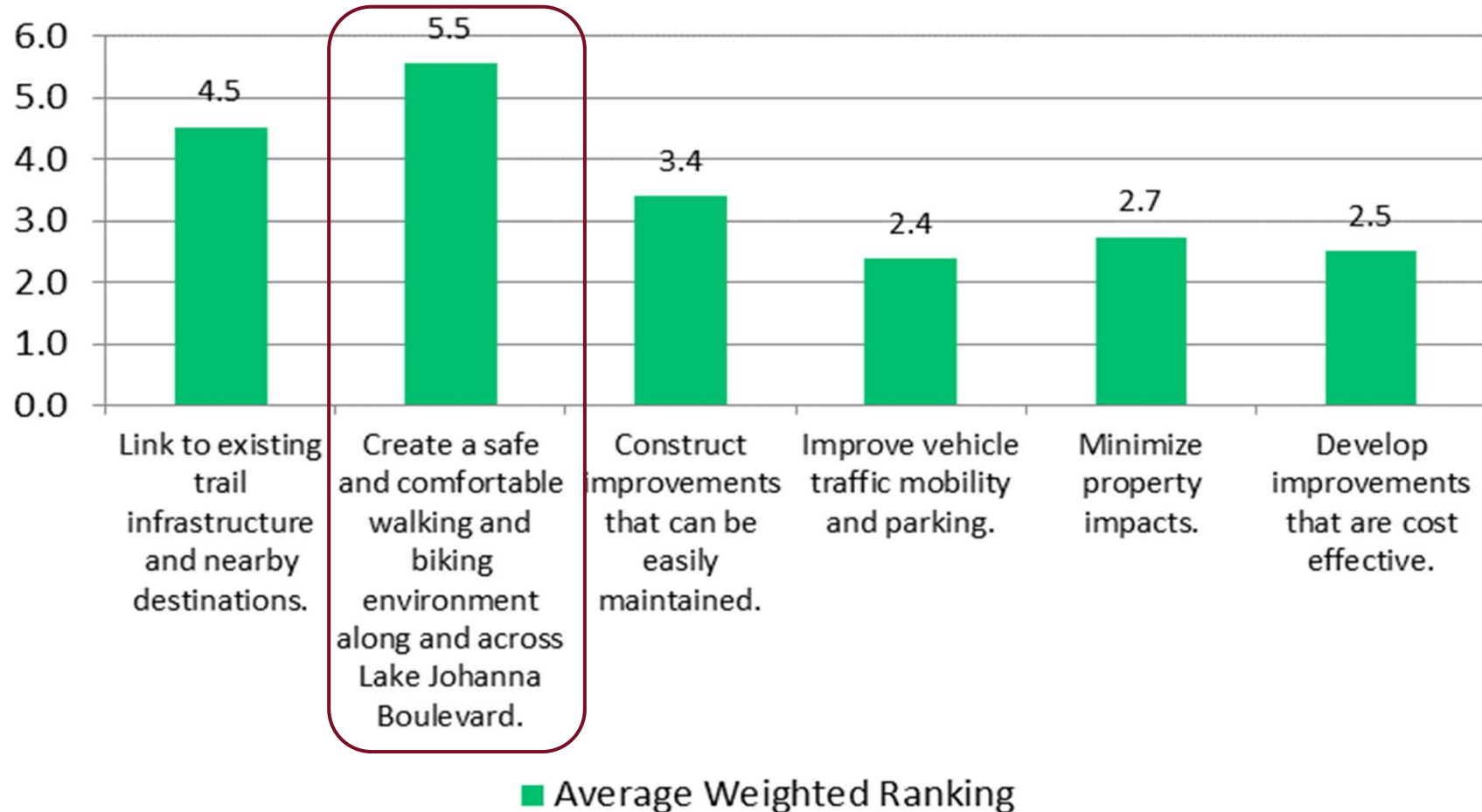
Project Goals

- Link to existing trail infrastructure and nearby destinations
- Create a safe and comfortable walking/biking environment along and across Lake Johanna Boulevard
- Construct improvements that can be easily maintained
- Improve vehicle traffic mobility and safety
- Minimize property impacts
- Develop improvements that are financially feasible

Feedback: How do you travel along Lake Johanna Boulevard?



Feedback: Which of the following goals are most important?



Common Feedback Themes

- General support for trail separated from roadway traffic
- Cars travel too fast along Lake Johanna Boulevard
- Car parking/passing on shoulders creates conflict with pedestrians and cyclists
- Roadway does not feel safe to walk, bike or push stroller, especially for young children
- Roadway curvature results in blind corners/intersections
- Prioritize connections to existing trails to create continuous loops/routes that are safe for walking and biking

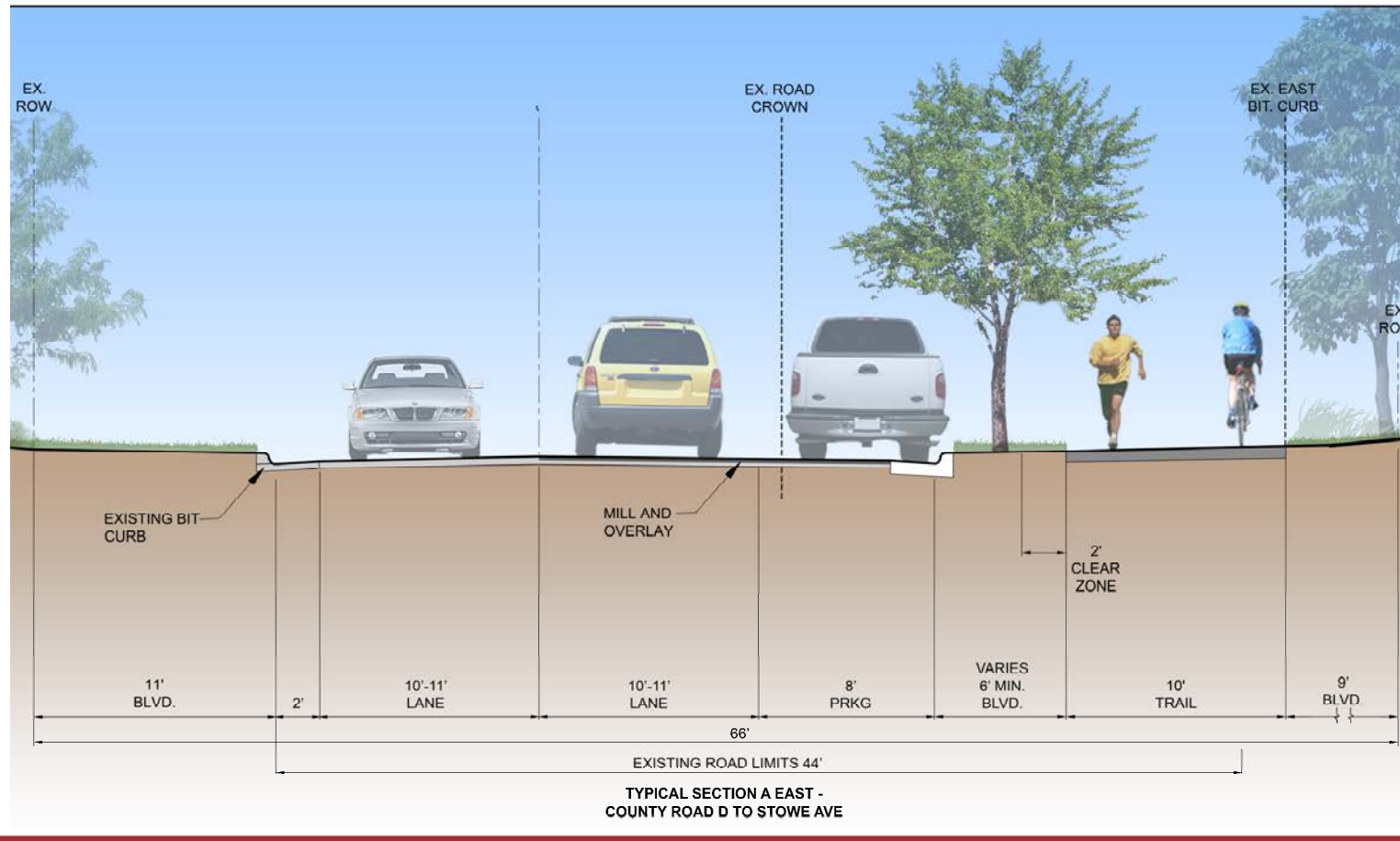
County Road D to Sandeen Road



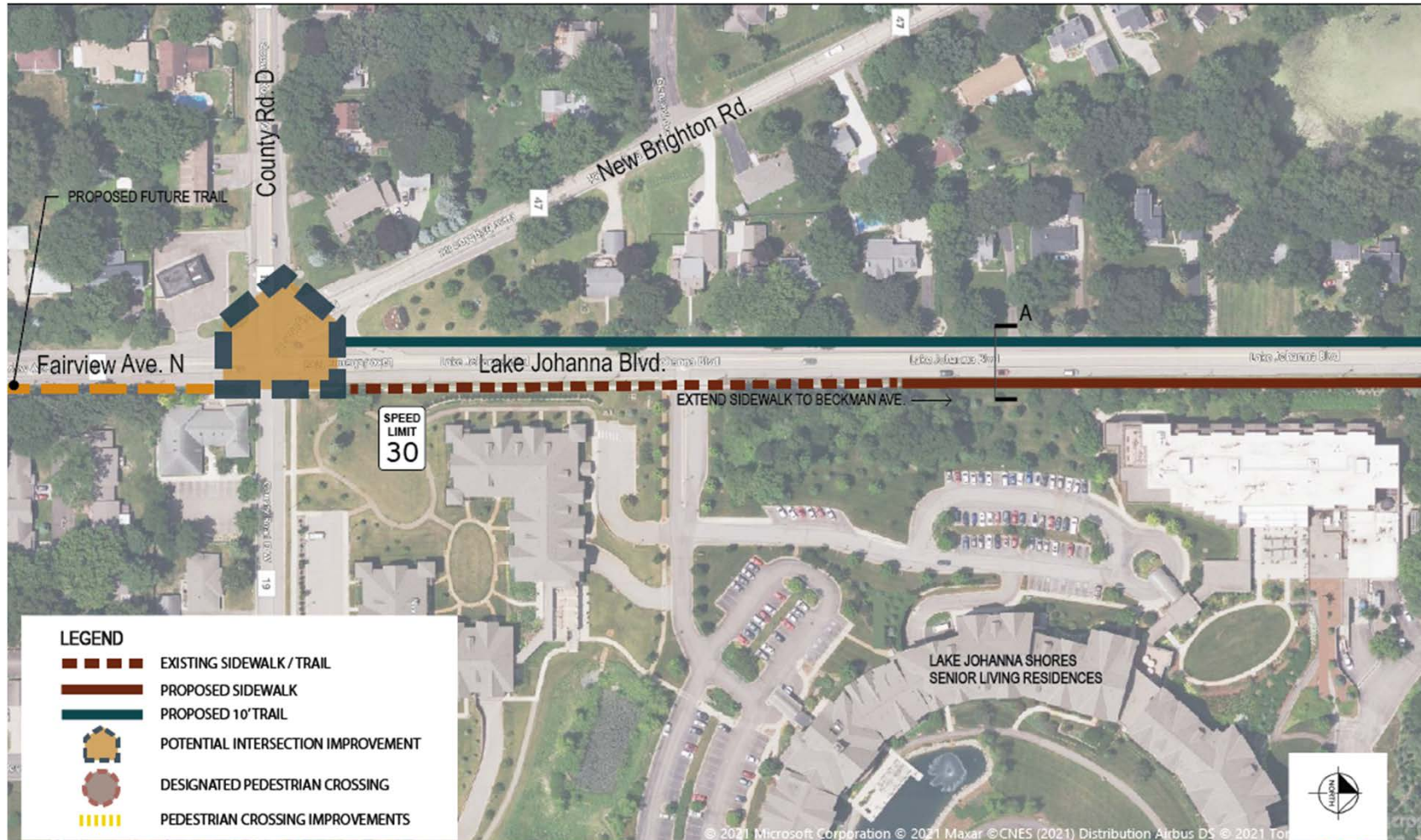
East Side Concept – County Road D to Sandeen Road



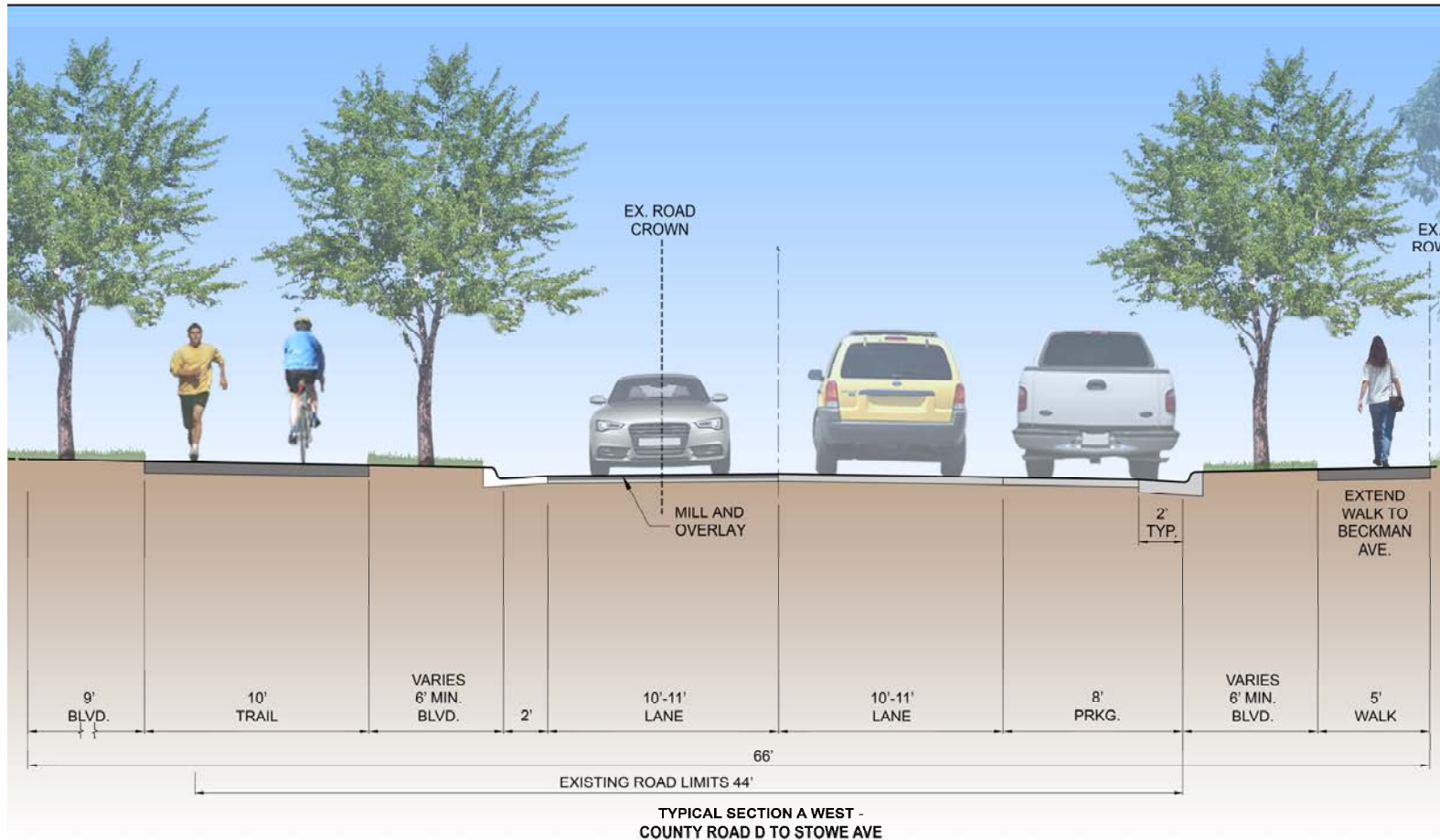
Typical Section A – County Road D to Sandeen Road East Side Concept



West Side Concept – County Road D to Sandeen Road



Typical Section A – County Road D to Sandeen Road West Side Concept



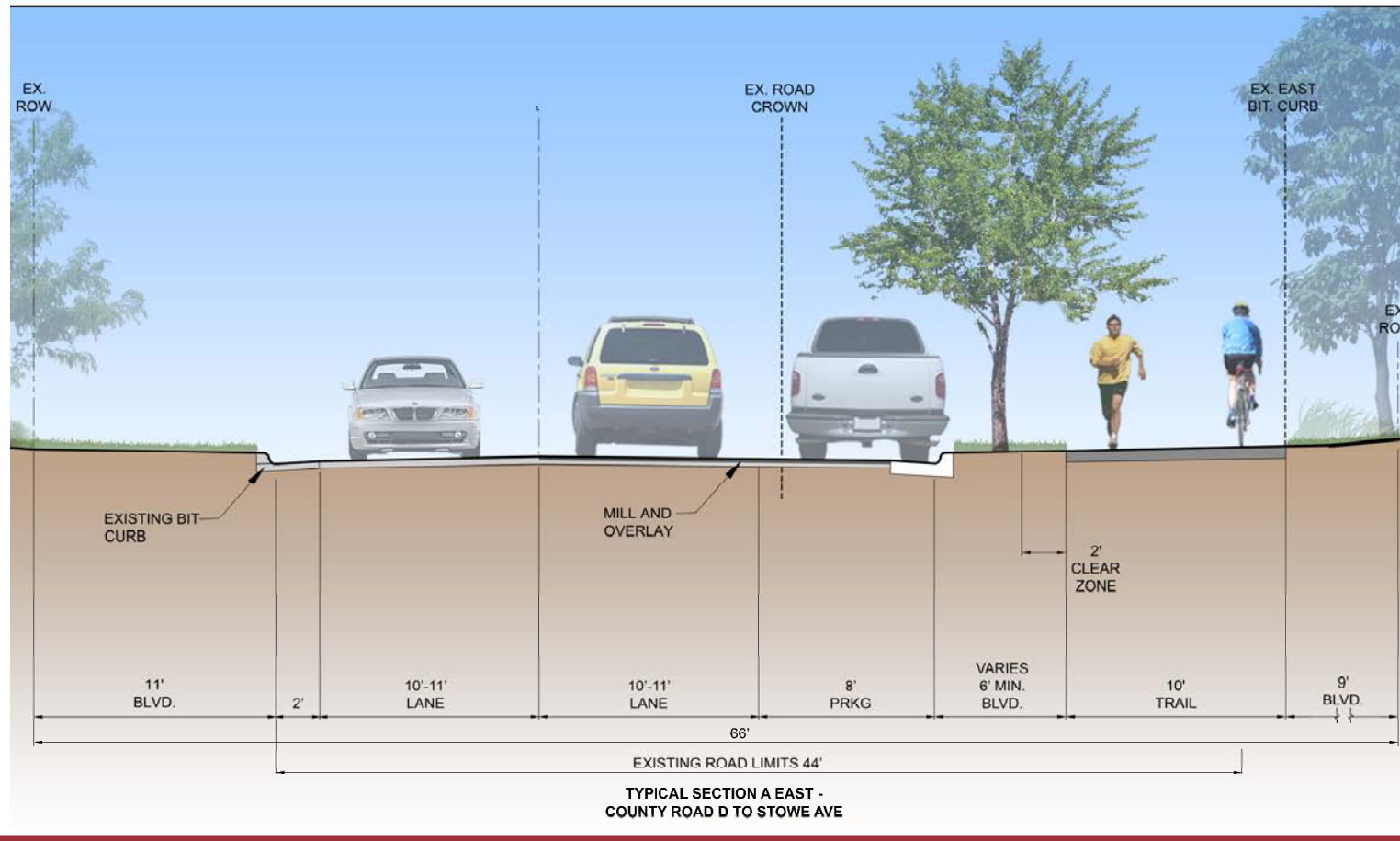
Sandeen Road to Stowe Avenue



East Side Concept – Sandeen Road to Stowe Ave



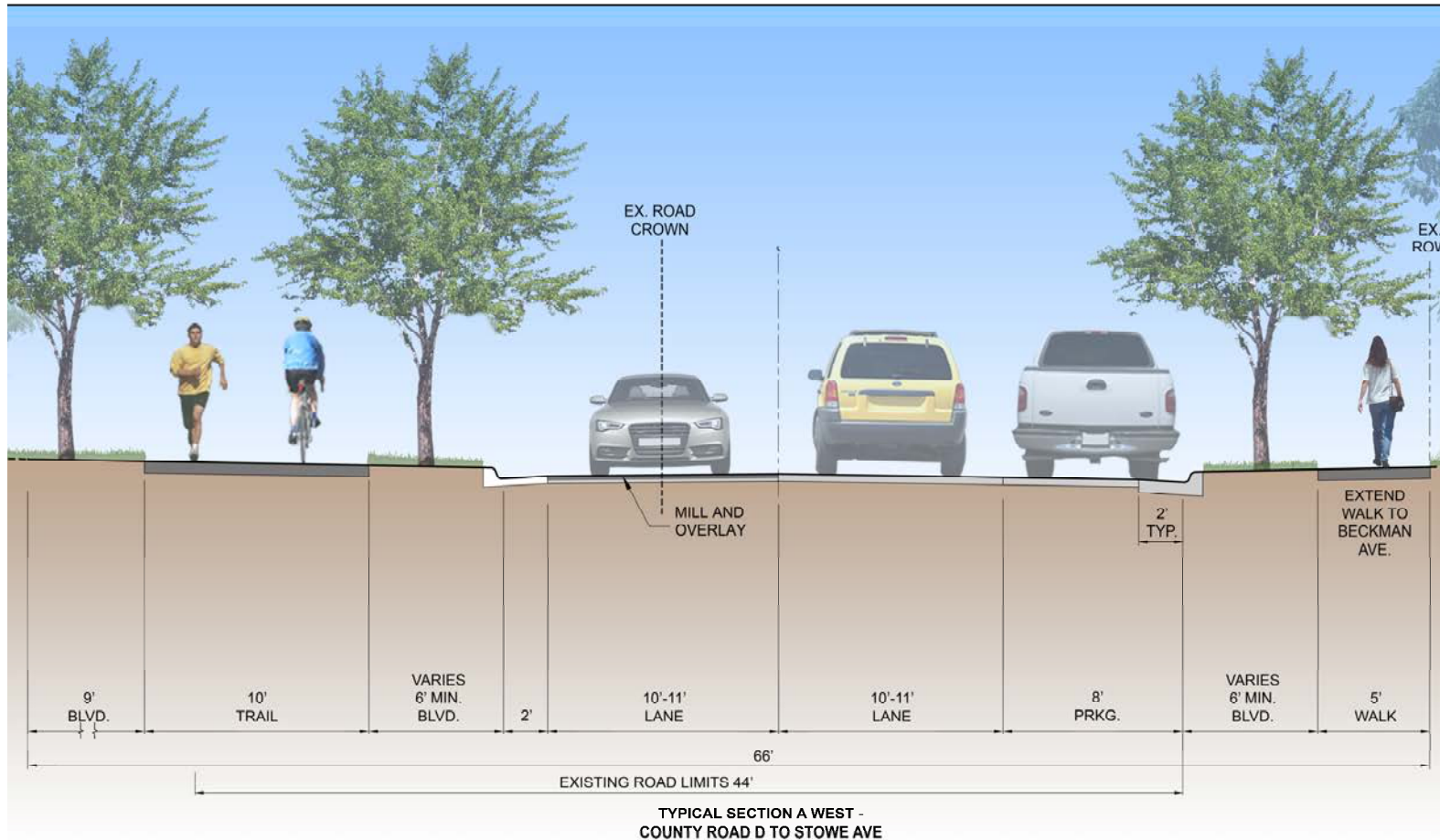
Typical Section A – Sandeen Road to Stowe Avenue East Side Concept



West Side Concept – Sandeen Road to Stowe Ave



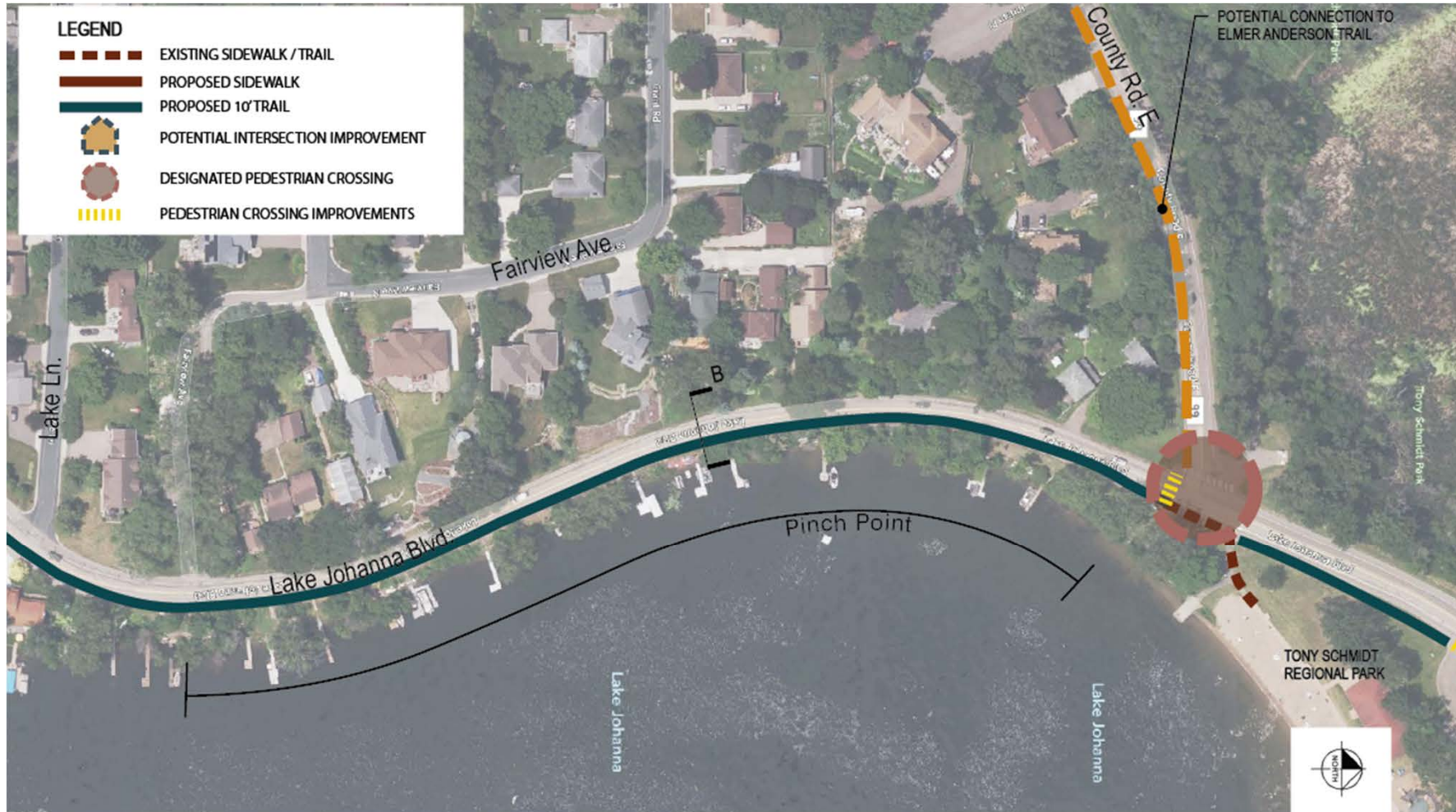
Typical Section A – Sandeen Road to Stowe Avenue West Side Concept



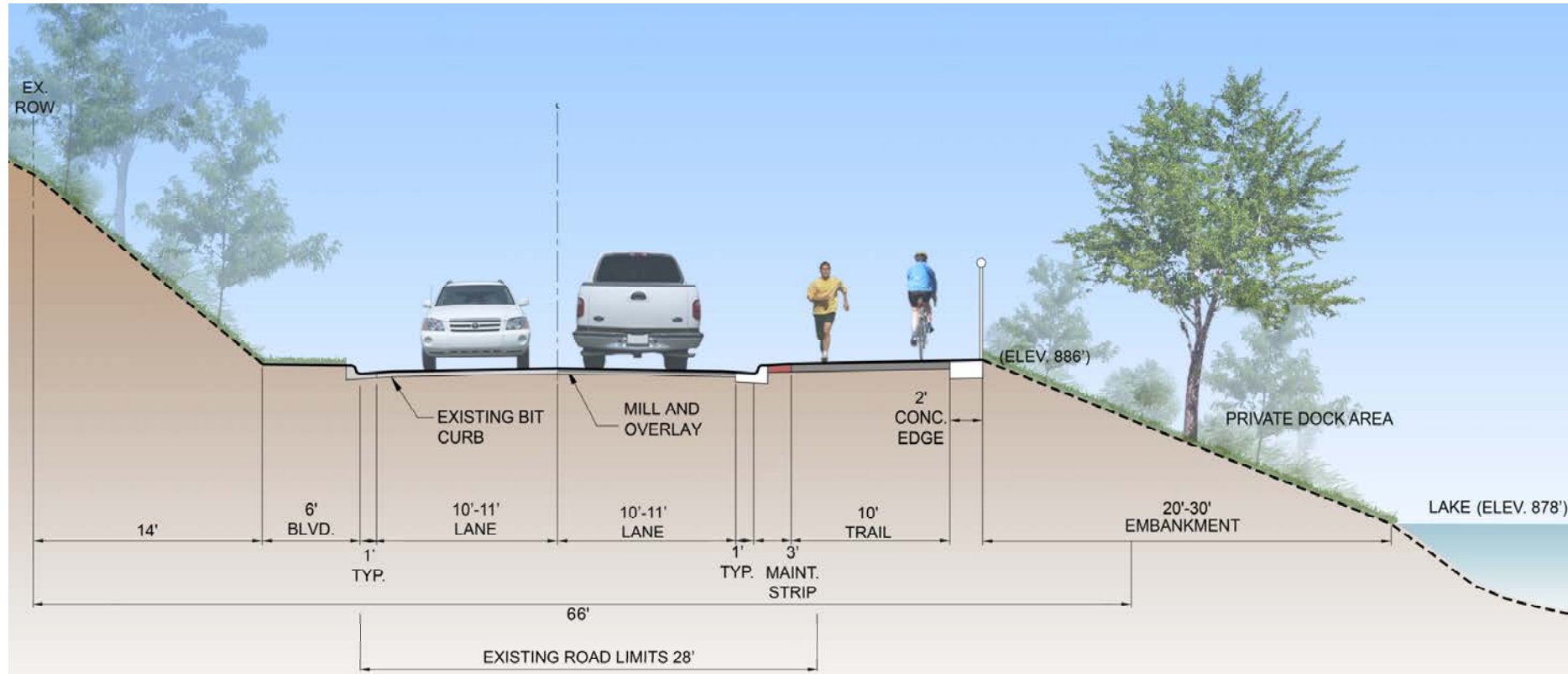
Stowe Ave to County Road E



East Side Concept – Stowe Ave to County Road E

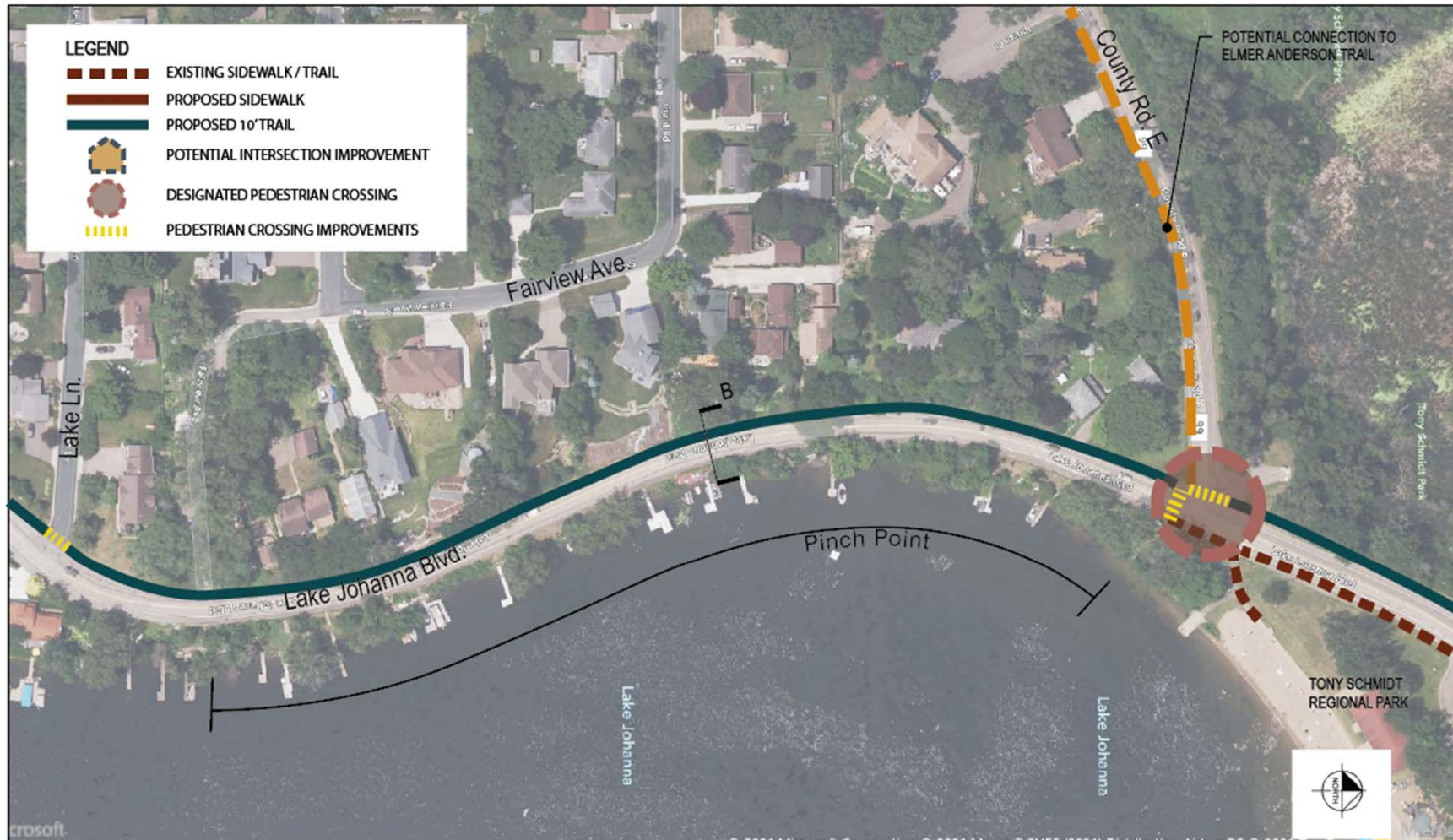


Typical Section B – Stowe Ave to County Road E East Side Concept

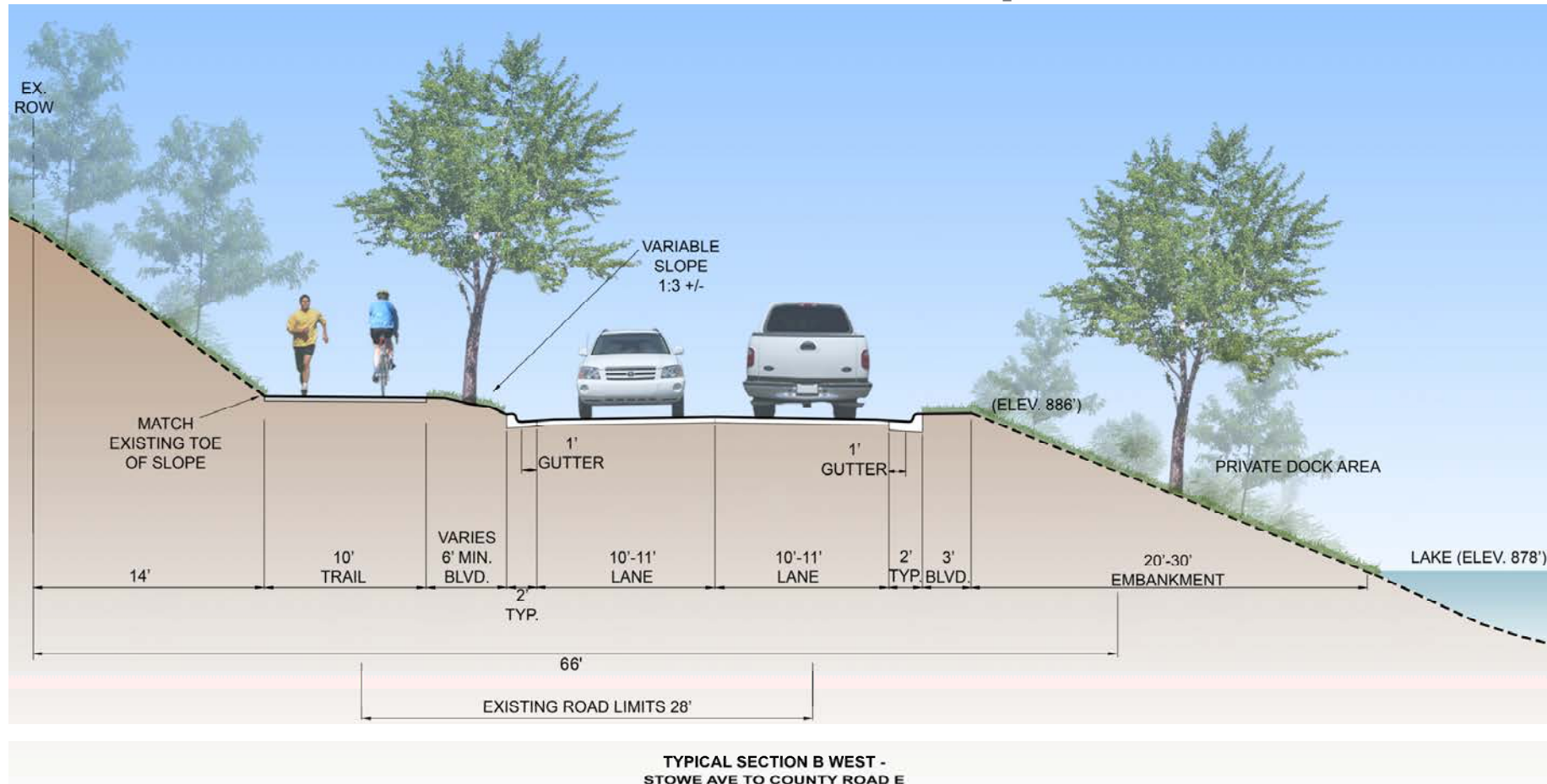


TYPICAL SECTION B EAST -
STOWE AVE TO COUNTY ROAD E

West Side Concept – Stowe Ave to County Road E



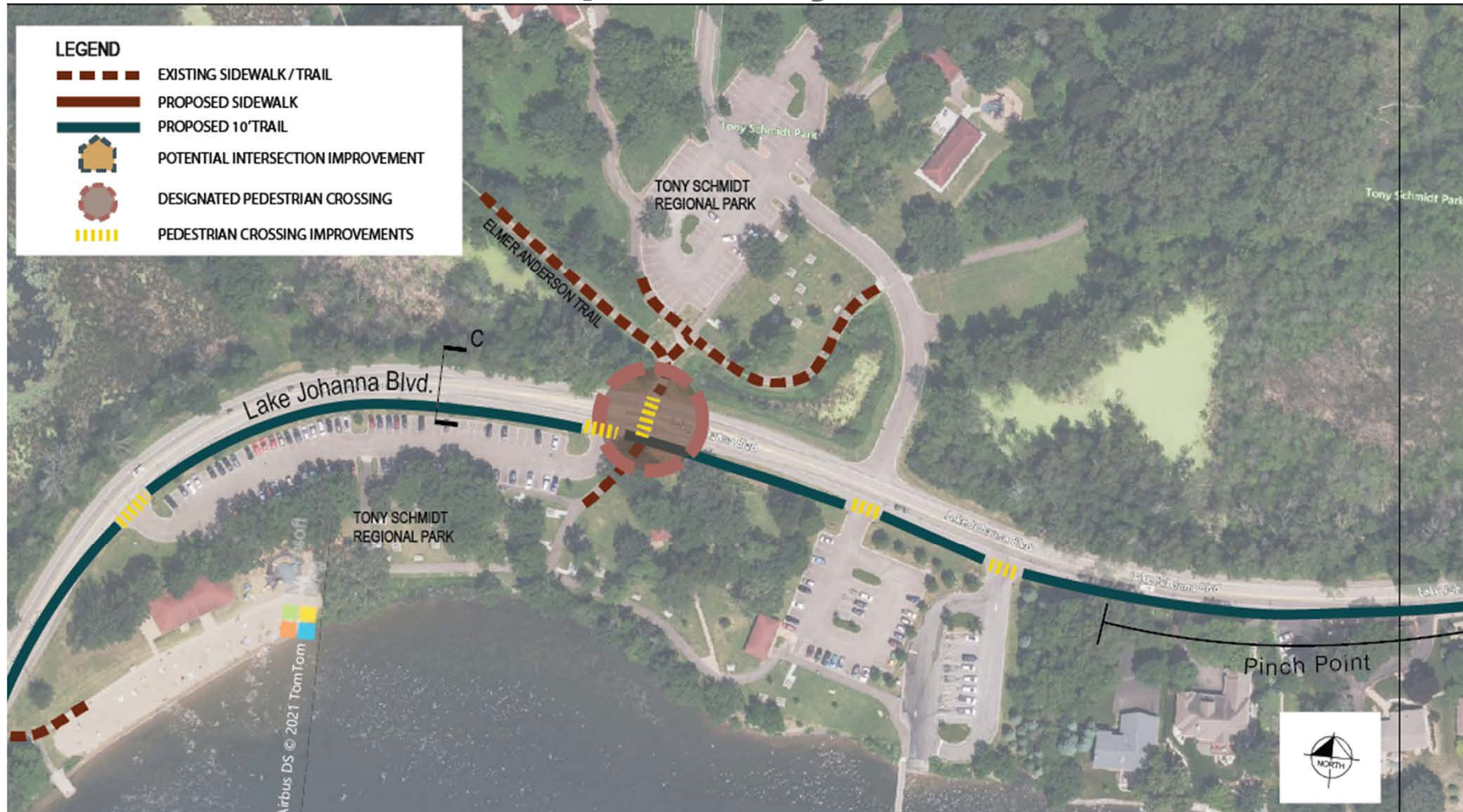
Typical Section – Stowe Ave to County Road E West Side Concept



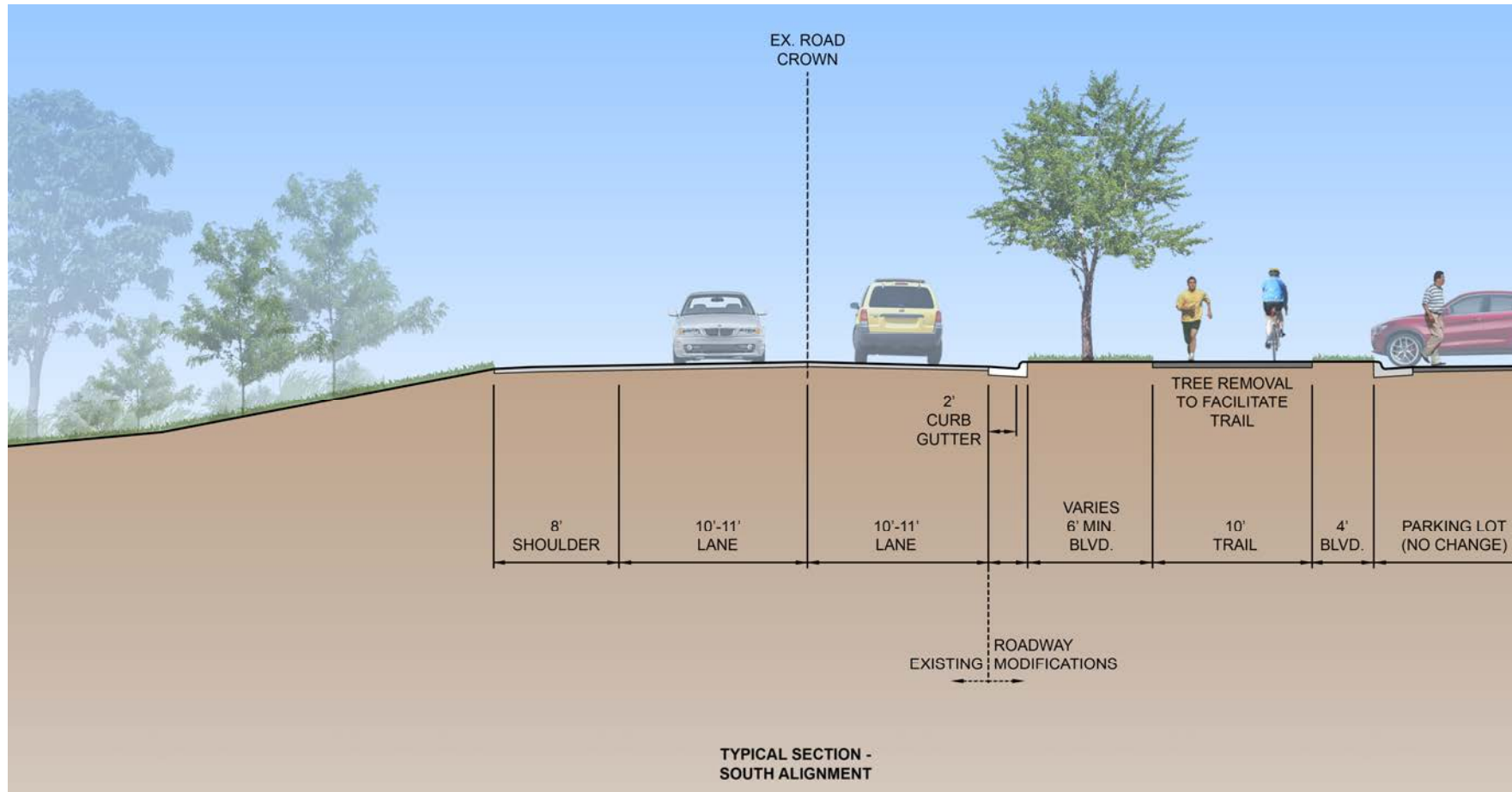
Tony Schmidt Regional Park



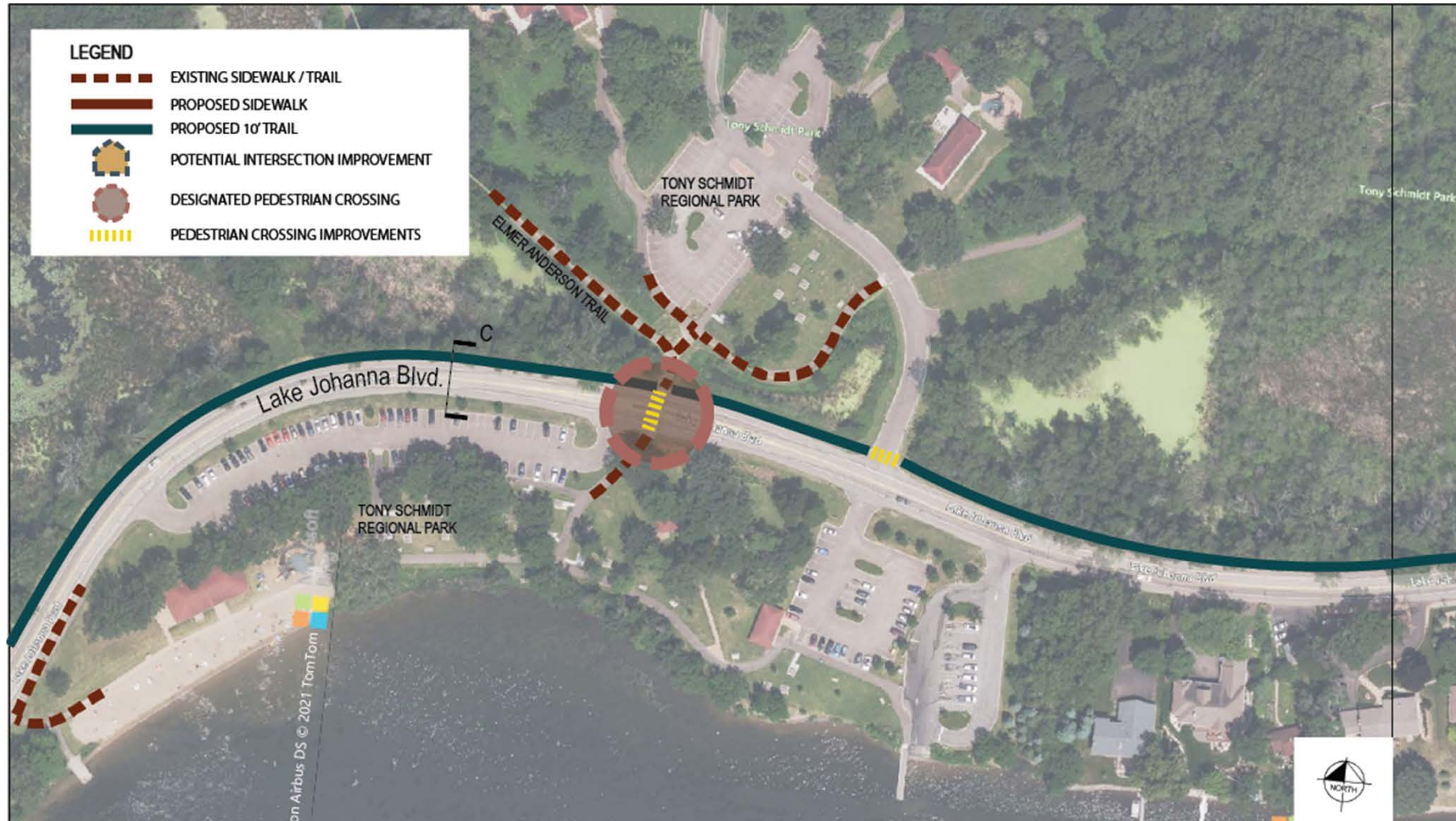
South Side Concept – Tony Schmidt Park Area



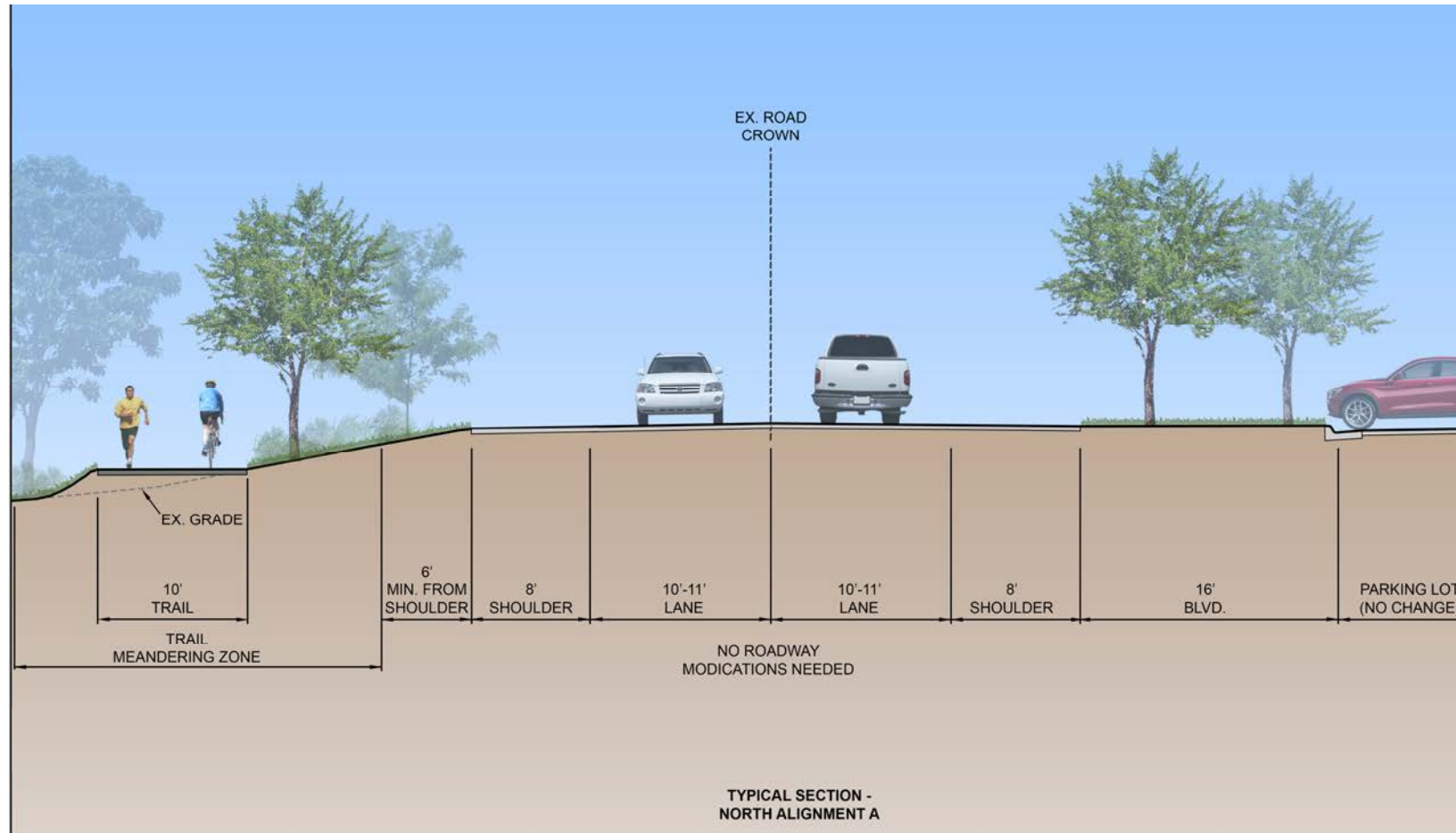
Typical Section C – Tony Schmidt Park Area South Side Concept



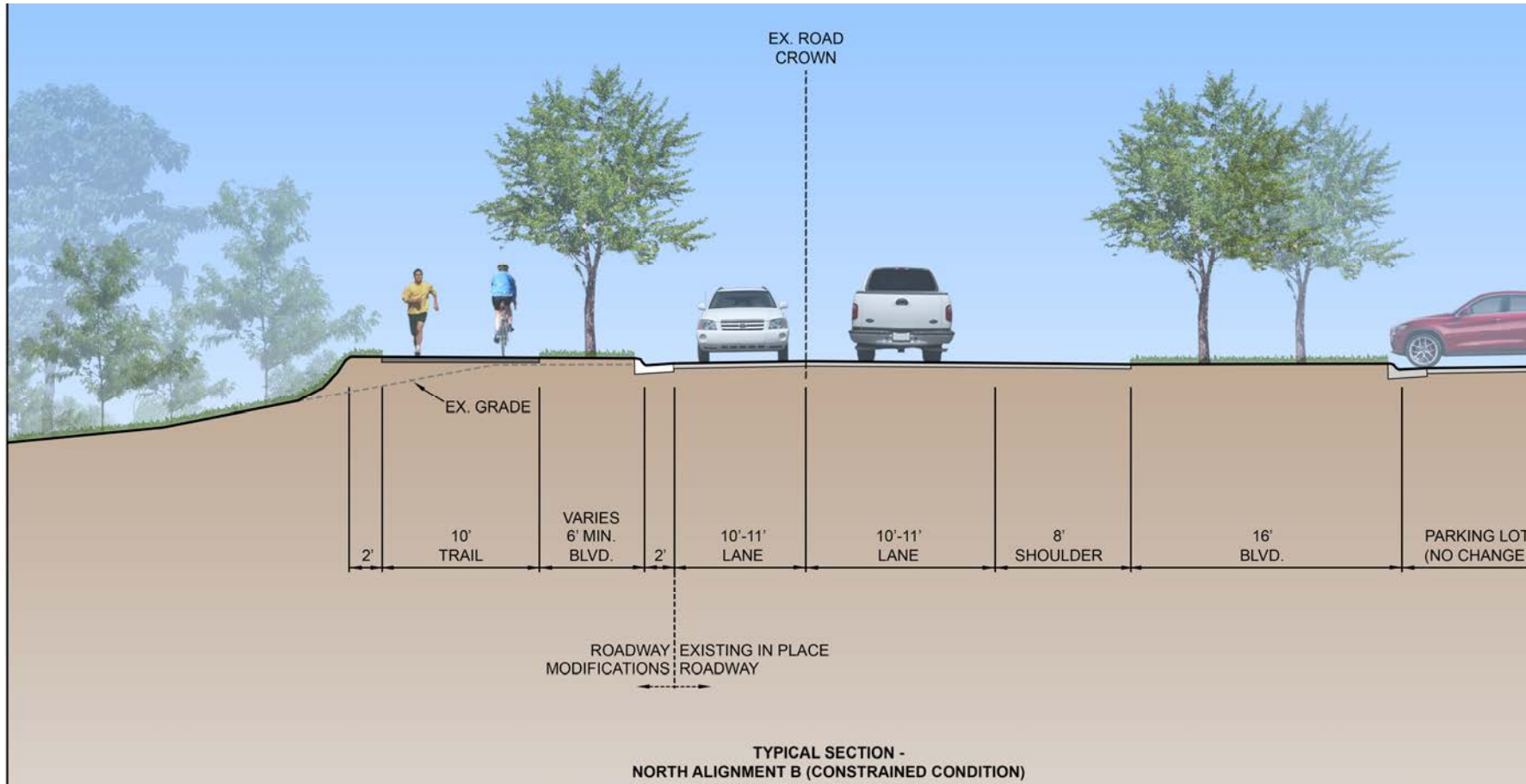
North Side Concept – Tony Schmidt Park Area



Typical Section C – Tony Schmidt Park Area North Side Concept – Unconstrained Condition



Typical Section C – Tony Schmidt Park Area North Side Concept – Constrained Condition



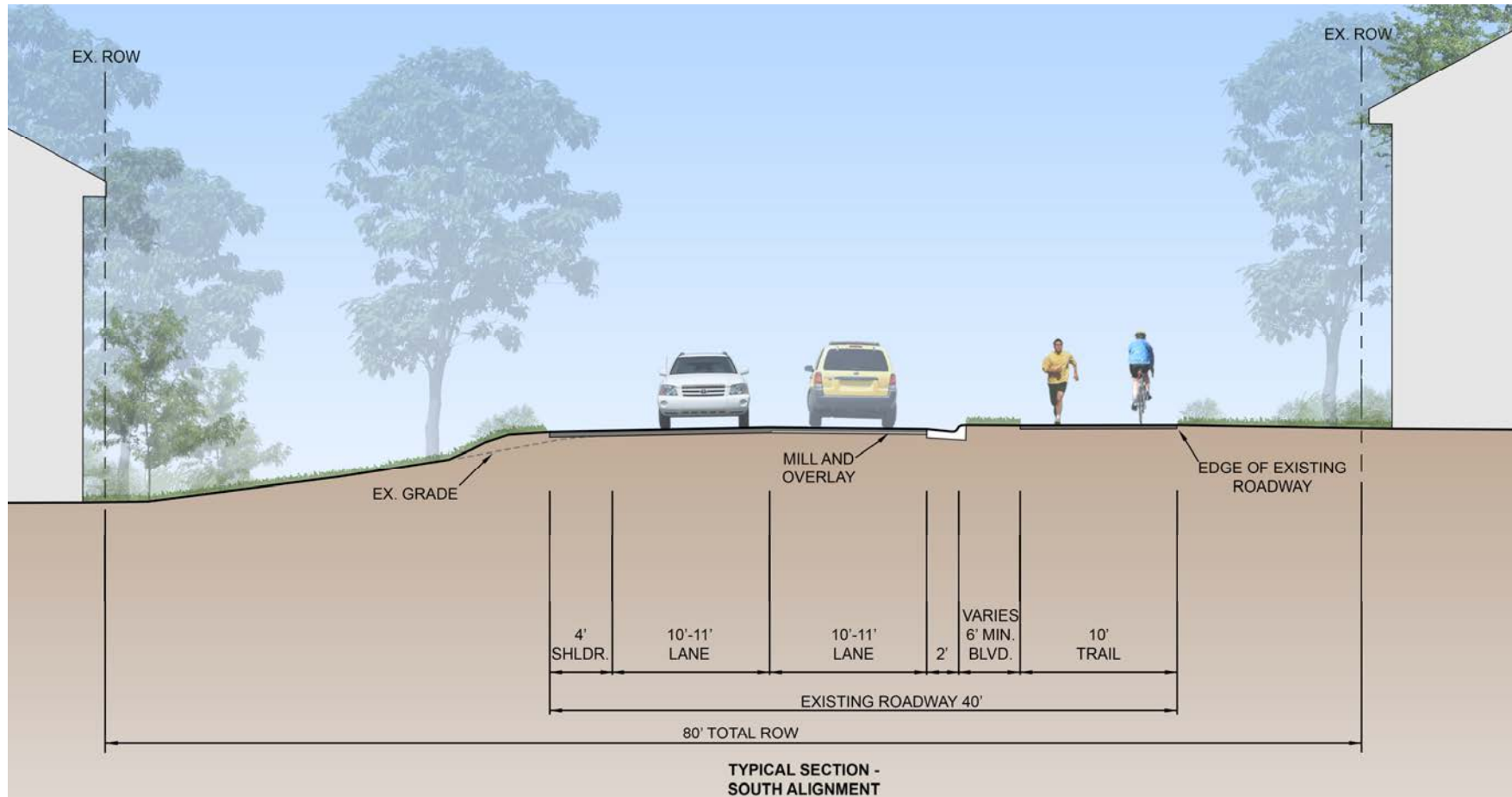
Tony Schmidt Park to Siems Court



South Concept – Tony Schmidt Park to Siems Ct.



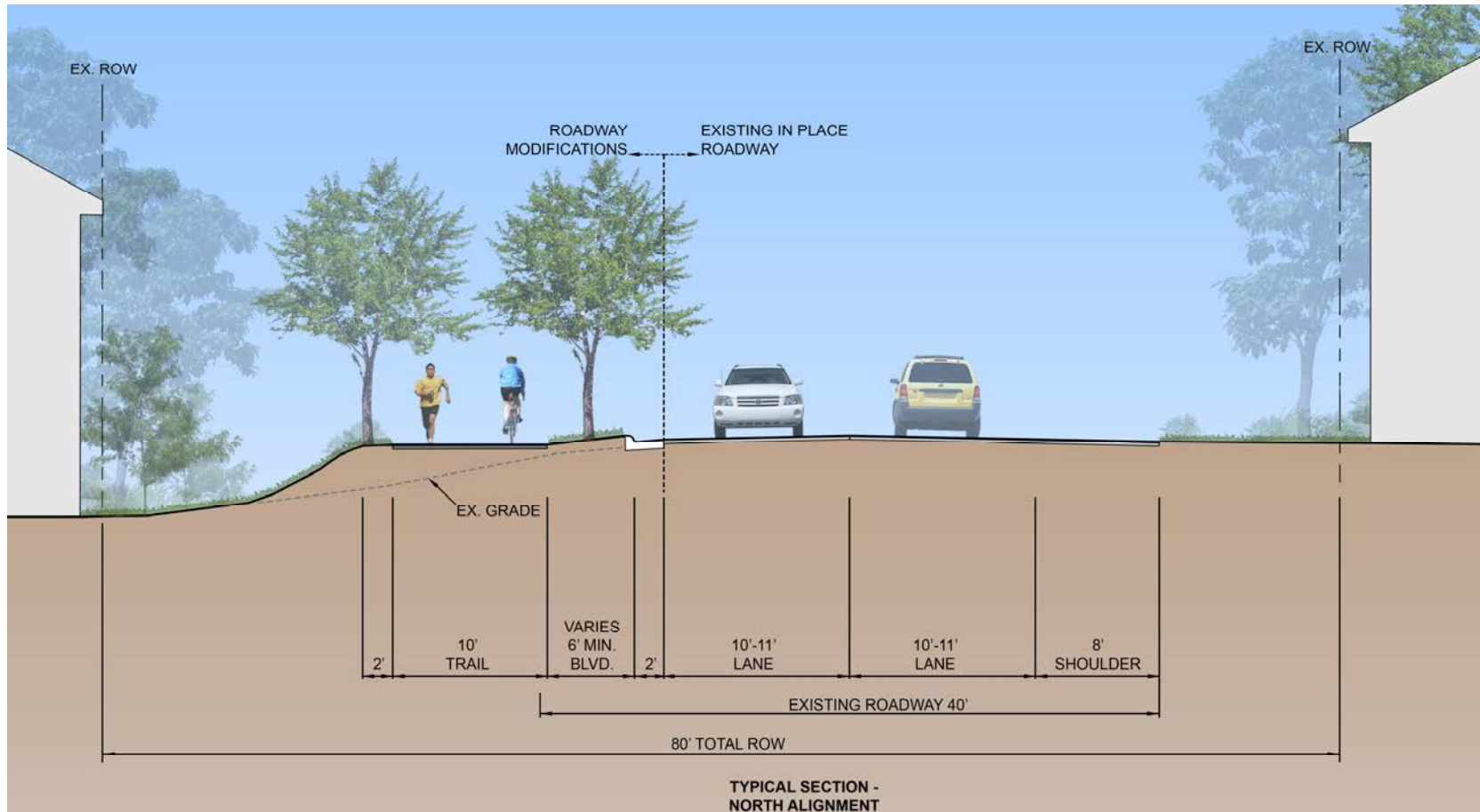
Typical Section D – Tony Schmidt Park to Siems Ct. South Side Concept



North Concept – Tony Schmidt Park to Siems Ct.



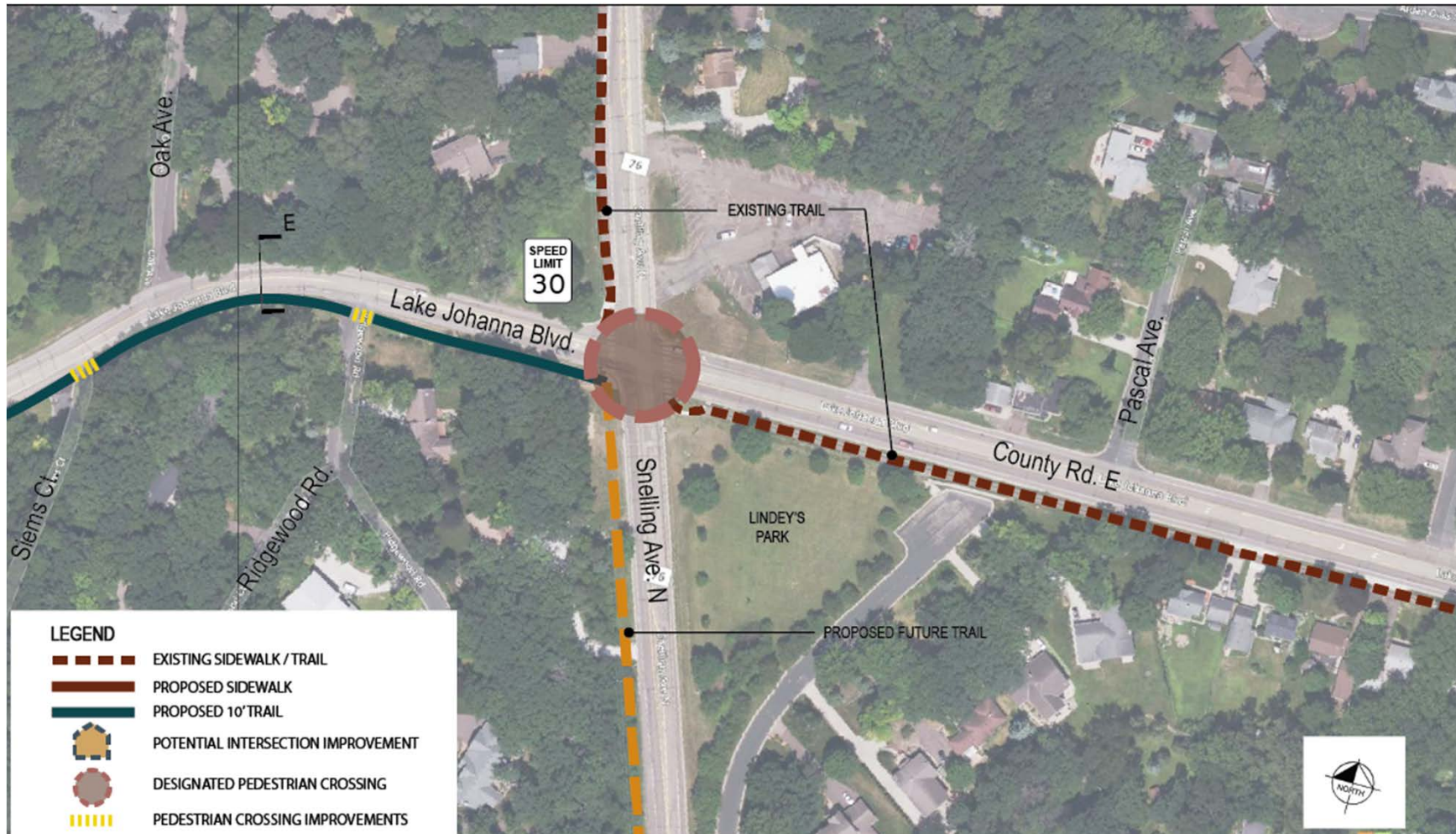
Typical Section – Tony Schmidt Park to Siems Ct. North Side Concept



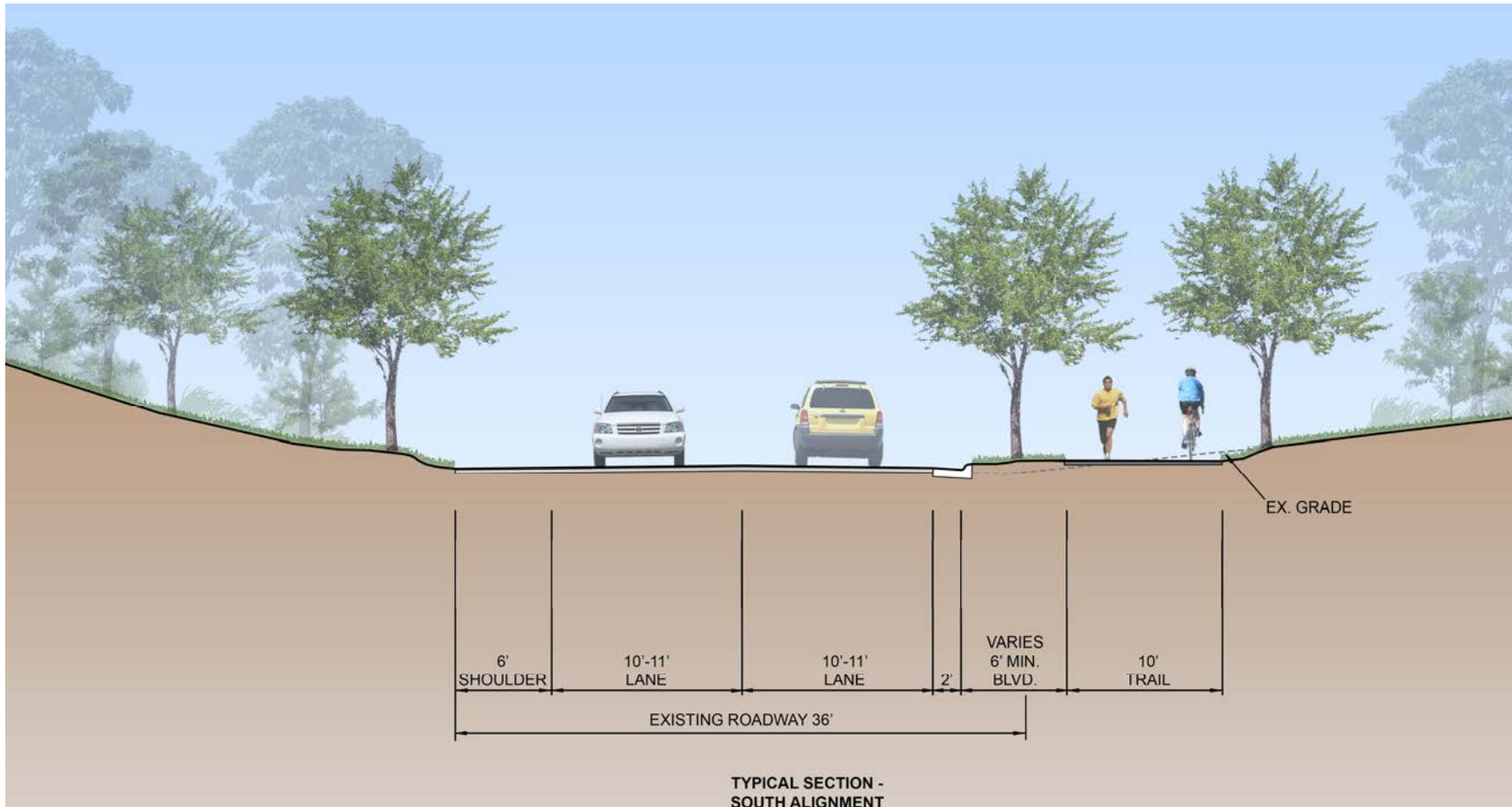
Siems Court to Old Snelling Avenue



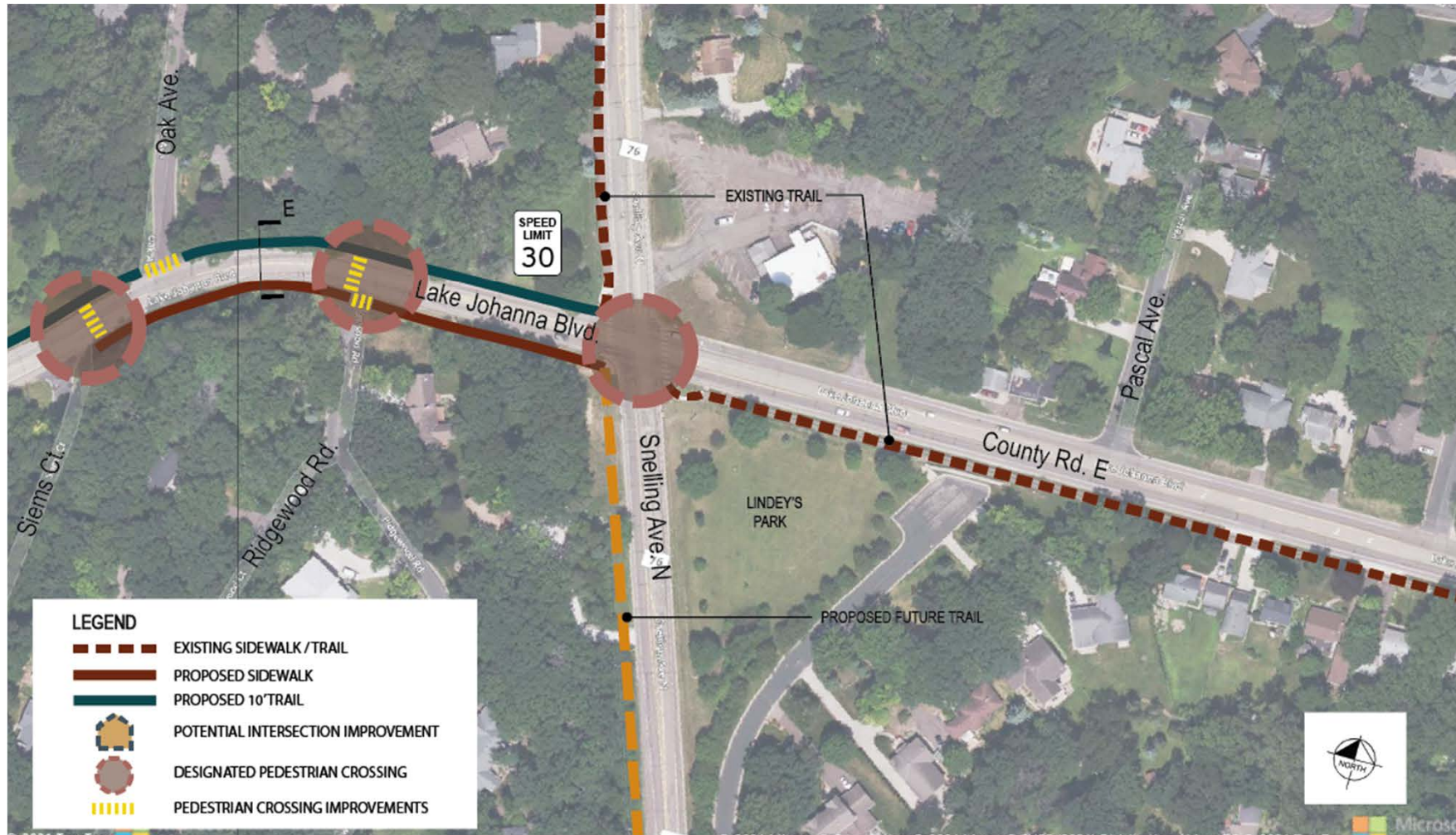
South Concept – Siems Ct. to Old Snelling Ave



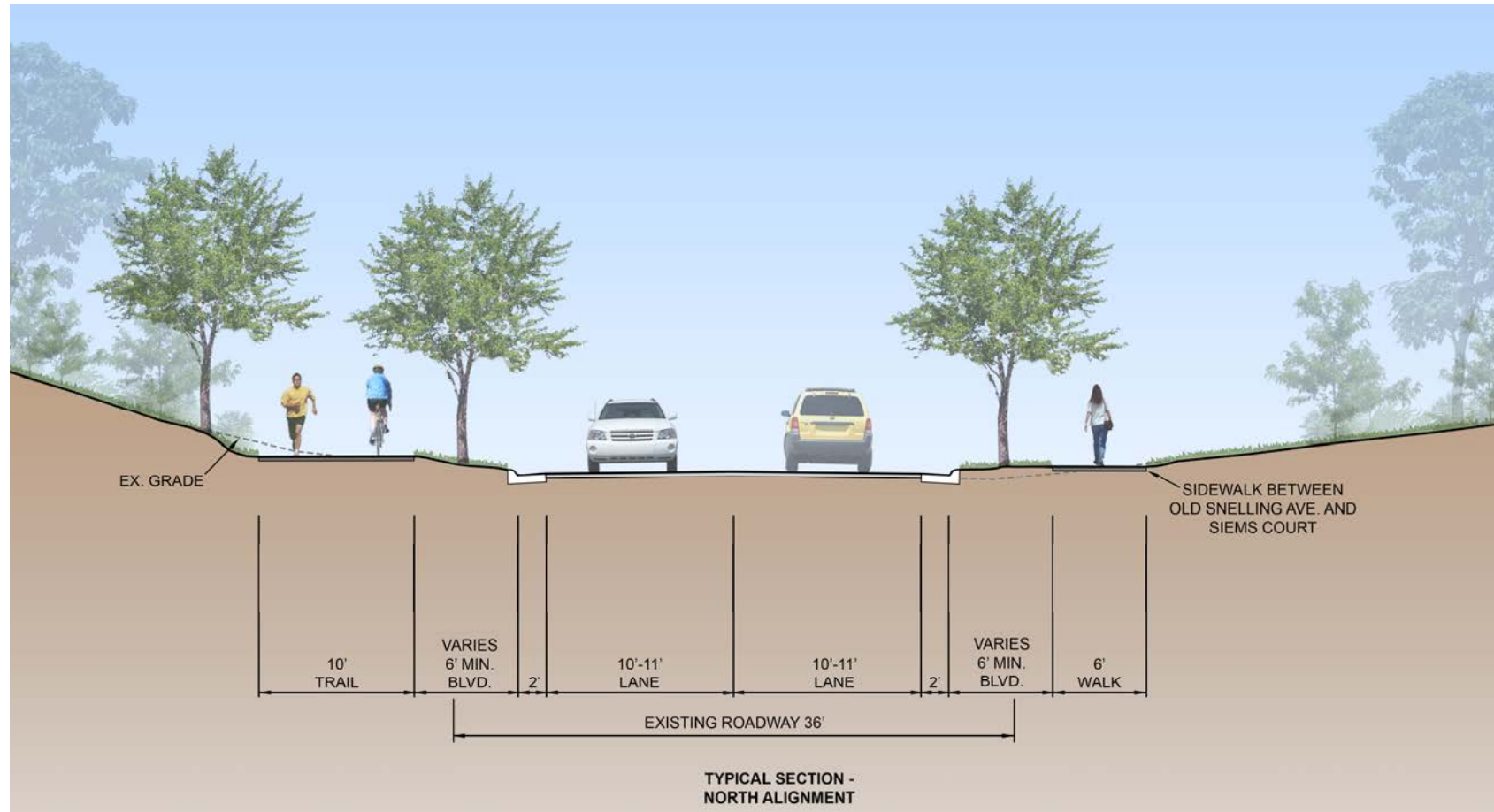
Typical Section E – Siems Court to Old Snelling Ave South Side Concept

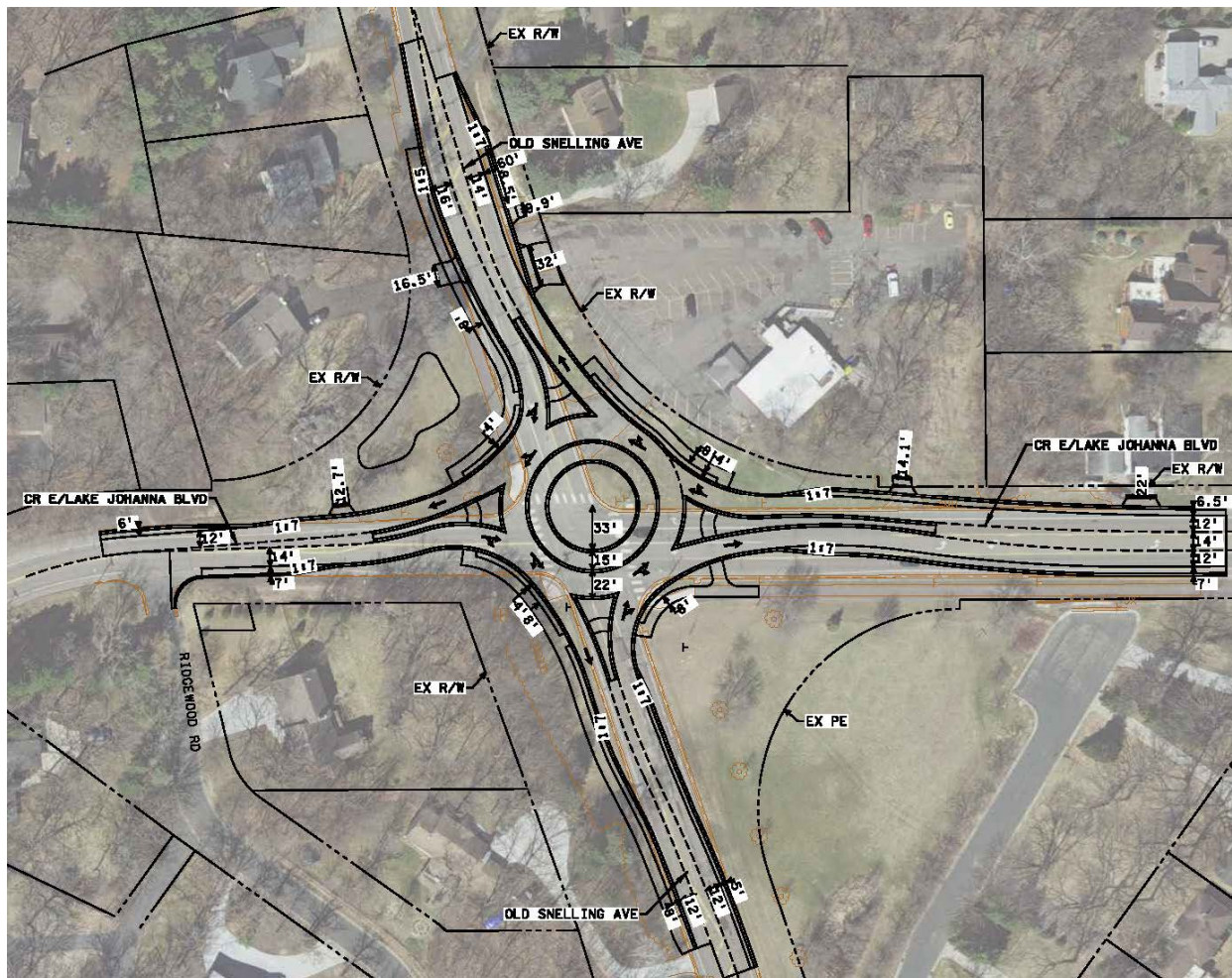


North Concept – Siems Ct. to Old Snelling Ave



Typical Section E – Siems Court to Old Snelling Ave North Side Concept





County Road D Intersection

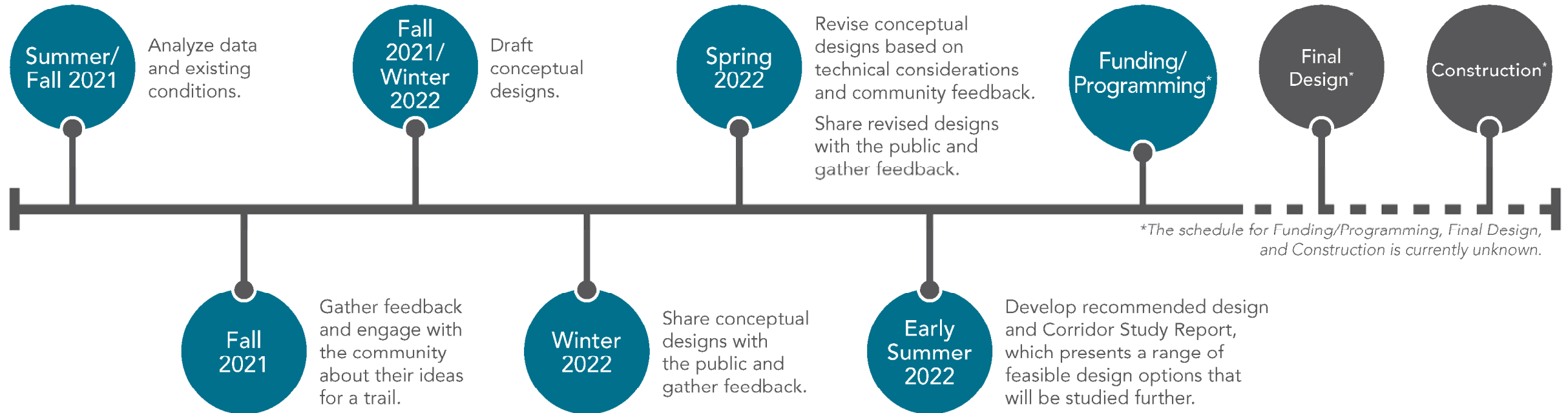


Stormwater Quality Considerations

- Explore and identify locations to intercept runoff and filter or infiltrate prior to entering Lake Johanna
- Consider stormwater basins as visual amenities for trail users
- Meandering trail alignments conducive for water quality infrastructure




Schedule



Feedback

- Preferences on side of roadway
- Comments on intersection crossings
- Areas of concern/focus for the design team

Q&A Instructions

- **On the Web Version:**
 - Click the **“Ask a question”** button (lower right corner of the window) to submit a question to the project team at any point during the presentation. You can also check the box to “ask anonymously”.
- **On the Mobile Version:**
 - Select **Q&A**  on the upper right side of the screen to view the question box.
 - Same steps as above.

NOTE: For both web and mobile version, if you lose audio check to see if you’ve paused the live meeting.

Stay Connected

- Share your comments, questions and concerns on our feedback map and online survey linked on the project website:
ramseycounty.us/LakeJohannaBlvdTrail
 - The map and survey will be available until April 1, 2022
- Open House materials will be posted on the project website.

Questions? Contact:

Scott Mareck, Ramsey County Public Works

651-266-7140

scott.mareck@ramseycountyus

Thank you!