



RAMSEY COUNTY

Lake Johanna Boulevard Roadway and Trail Design Study

Open House | July 7, 2022

Introductions

- Scott Mareck, Ramsey County Public Works, Project Manager
- Greg Brown, Kimley-Horn

Agency Partners

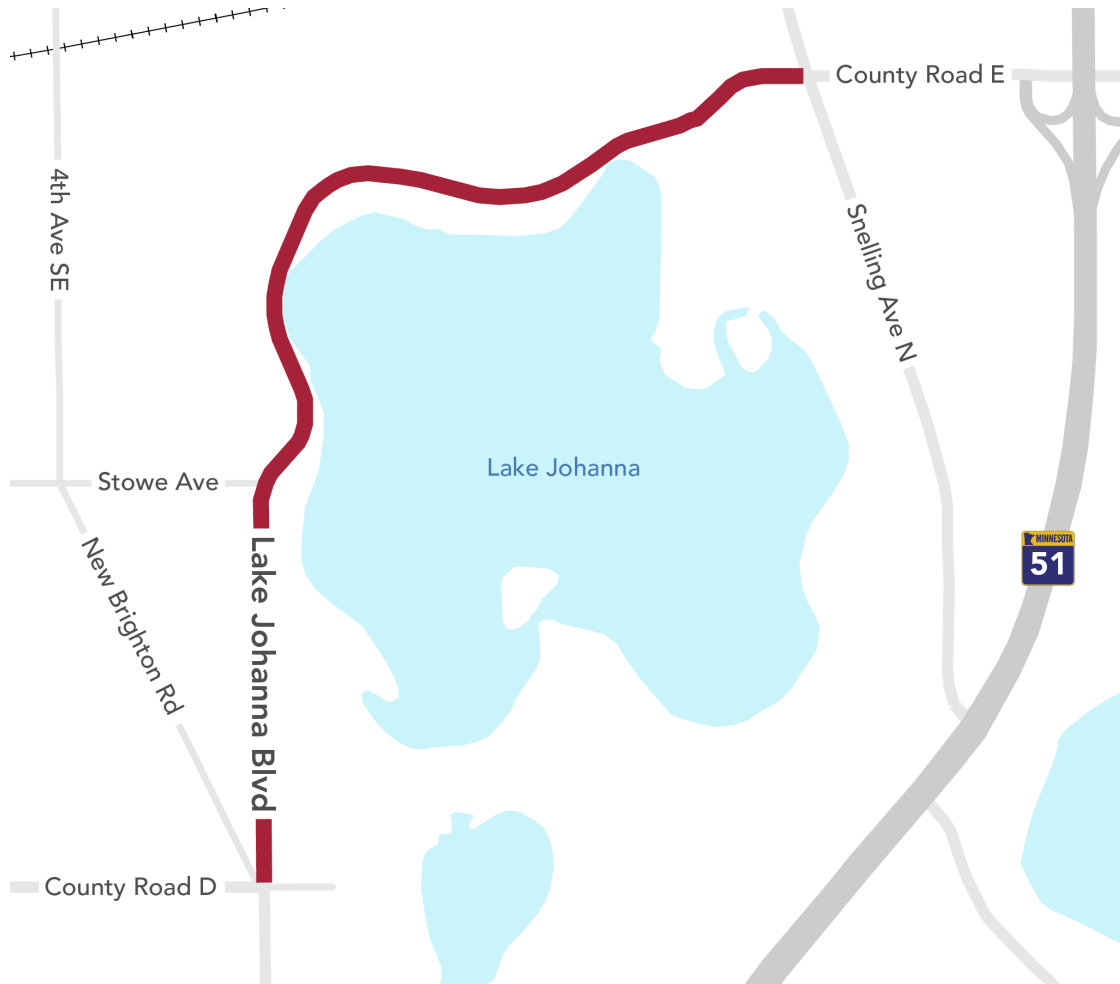
- David Swearingen, City of Arden Hills, Public Works Director
- Scott Yonke, Ramsey County Parks
- Connie Bernardy, Active Living Ramsey Communities
- Rich Straumann, Active Living Ramsey Communities
- Gene Gjerdingen, Active Living Ramsey Communities

Welcome to the Lake Johanna Boulevard Roadway and Trail Design Study Open House

Agenda

- Project overview
- Project goals
- Round 2 public engagement summary
- Evaluation of trail design concepts
- Refined trail designs
- Schedule and next steps
- Question and answer

Project Overview



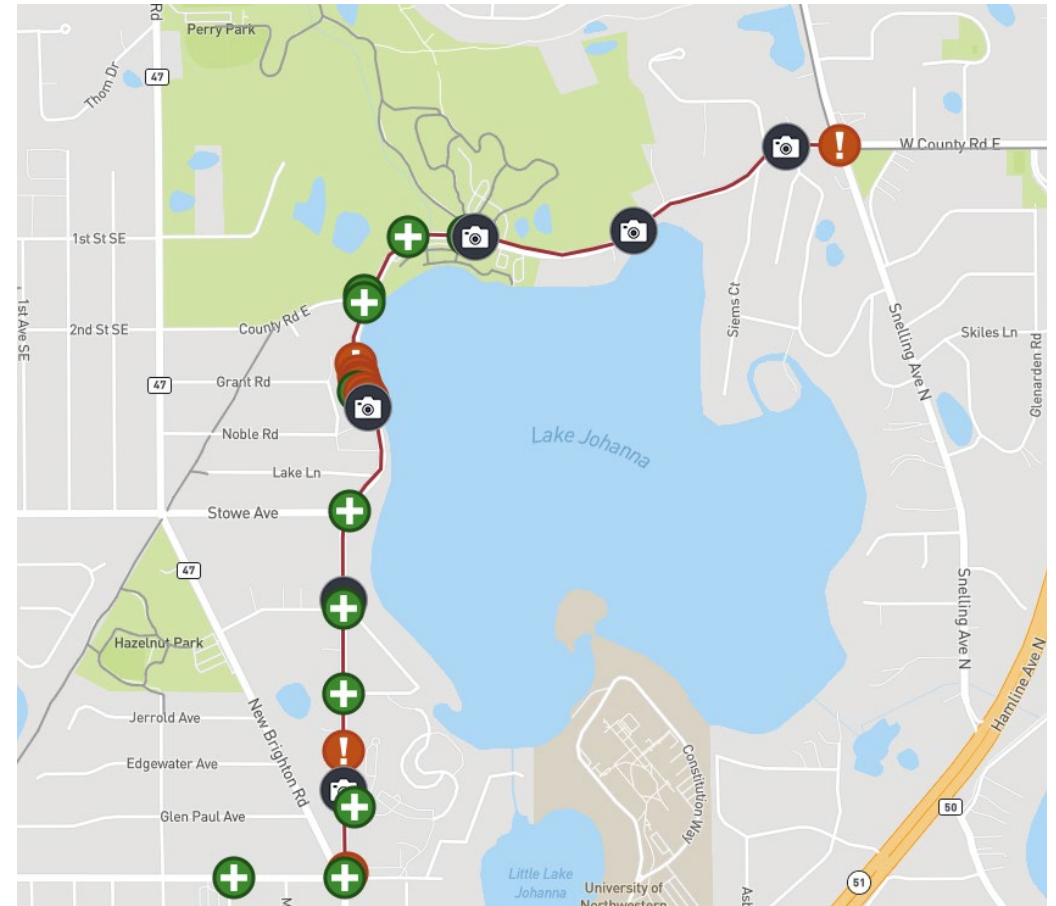
- The Lake Johanna Boulevard Corridor has significant bicycle and pedestrian traffic, but currently there is no sidewalk or separated trail facility along the corridor.
- The purpose of this study is to identify design concepts that can safely and adequately accommodate pedestrians and bicyclists today and into the future.

Project Goals

- Link to existing trail infrastructure and nearby destinations.
- Create a safe and comfortable walking/biking environment along and across Lake Johanna Boulevard.
- Construct improvements that can be easily maintained.
- Improve vehicle traffic mobility and safety.
- Minimize property impacts.
- Develop improvements that are financially feasible.

Round 2 Public Engagement Summary

- 60 attendees at virtual open house held March 1, 2022
- 20 online survey responses
- 77 interactive feedback map comments
- 484 virtual open house notices mailed
- Two email blasts to project distribution list (638 subscribers)
- Eight posts on Ramsey County social media outlets



Interactive map comment locations

Common Feedback Themes

- Support for both the east and west side options, with the west option being slightly more favored in public feedback.
 - Prefer east/south option because it's more enjoyable to walk lakeside.
 - Prefer the west/north option because there's more space, less disruption to private properties, better connections to existing trails.
- Prefer to limit the number of crossings if a hybrid of the east and west options is used.
- Concern about the trail's impacts to homeowners/private property.
- Motorists speed through this area; crossing is difficult when dealing with different visibilities and car speeds; feel these pedestrian/bicyclist safety improvements are greatly needed.
- Need for trails to be maintained during the winter for all-season use.

Evaluation of Trail Design Concepts

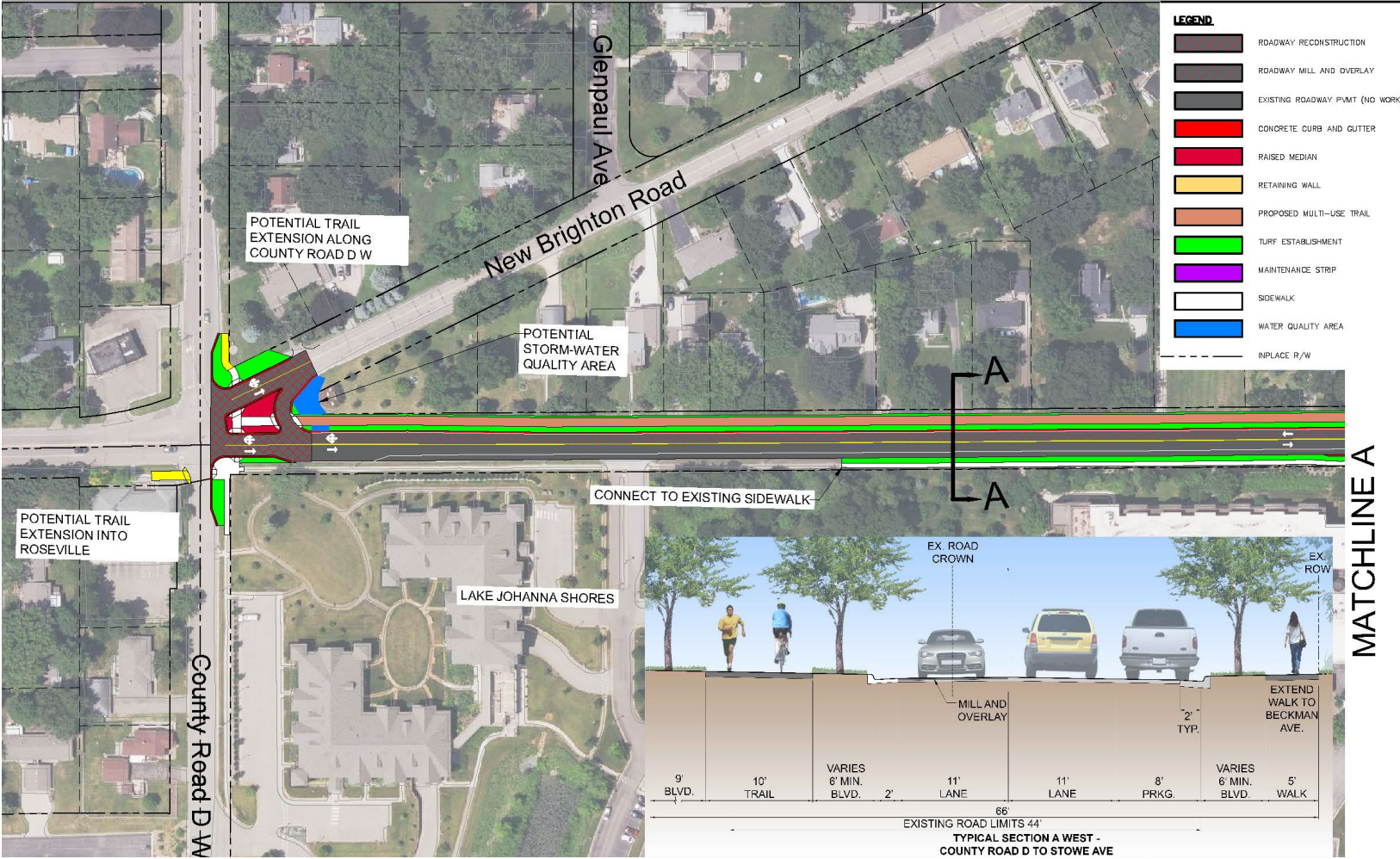
Rating	Explanation
Excellent	Meets or exceeds project goal
Good	Meets project goal with less than ideal conditions
Fair	Meets project goal with some impacts

Criteria	West/North	East/South
User Experience	Consistent boulevard, Tony Schmidt natural area passage	Proximity to lake, narrower boulevards/confined feeling in areas
Connectivity	Direct neighborhood access	Direct beach access
Scope of Roadway Modifications Improvements	Minimal roadway modifications along Tony Schmidt Park frontage	Roadway modifications entire length
Crossings/Conflicts	23 Driveways, 5 local streets	37 driveways, 4 local streets
Grading/Retaining Wall Scope	Anticipated between Lake Lane and County Road E	Anticipated between Lake Lane and County Road E
ROW/Easement Needs	Minimal needs	Minimal needs
Surface Utility Conflicts	Intermittent power poles	Significant stretches with power poles, mailboxes, hydrants
Cost (in 2022 dollars)	\$\$	\$\$\$

County Road D to Sandeen Road



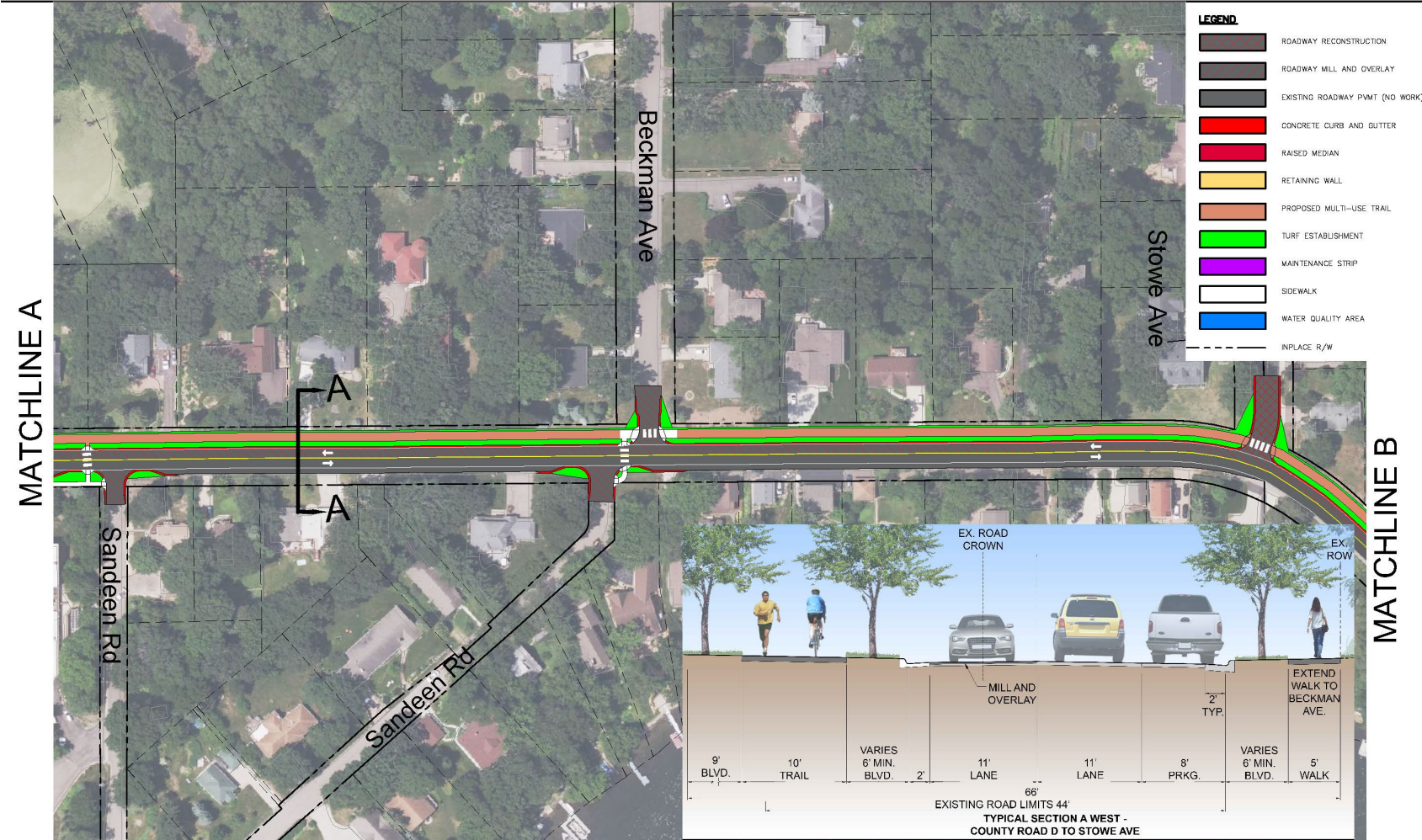
County Road D to Sandeen Road



Sandeen Road to Stowe Avenue



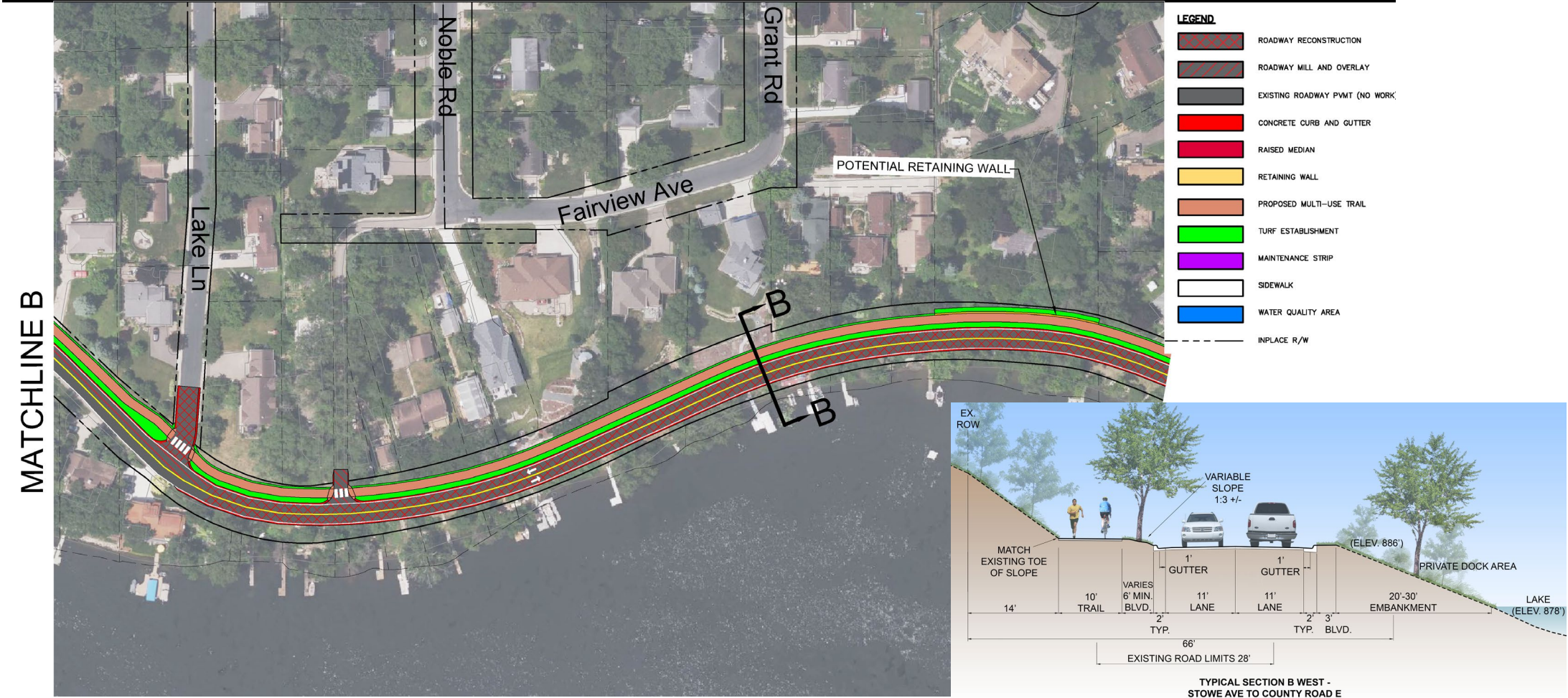
Sandeen Road to Stowe Ave



Stowe Ave to County Road E



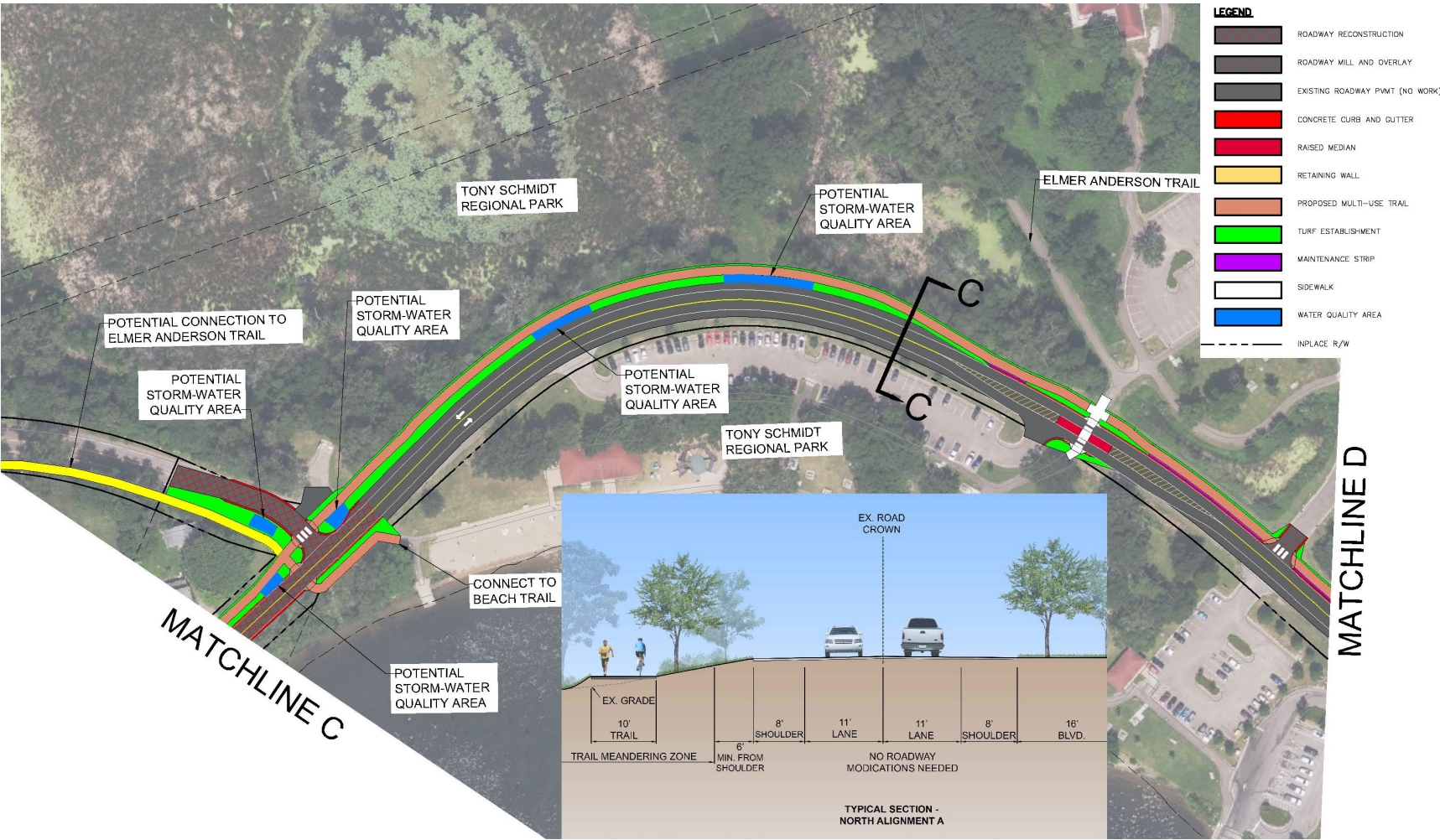
Stowe Ave to County Road E



Tony Schmidt Regional Park



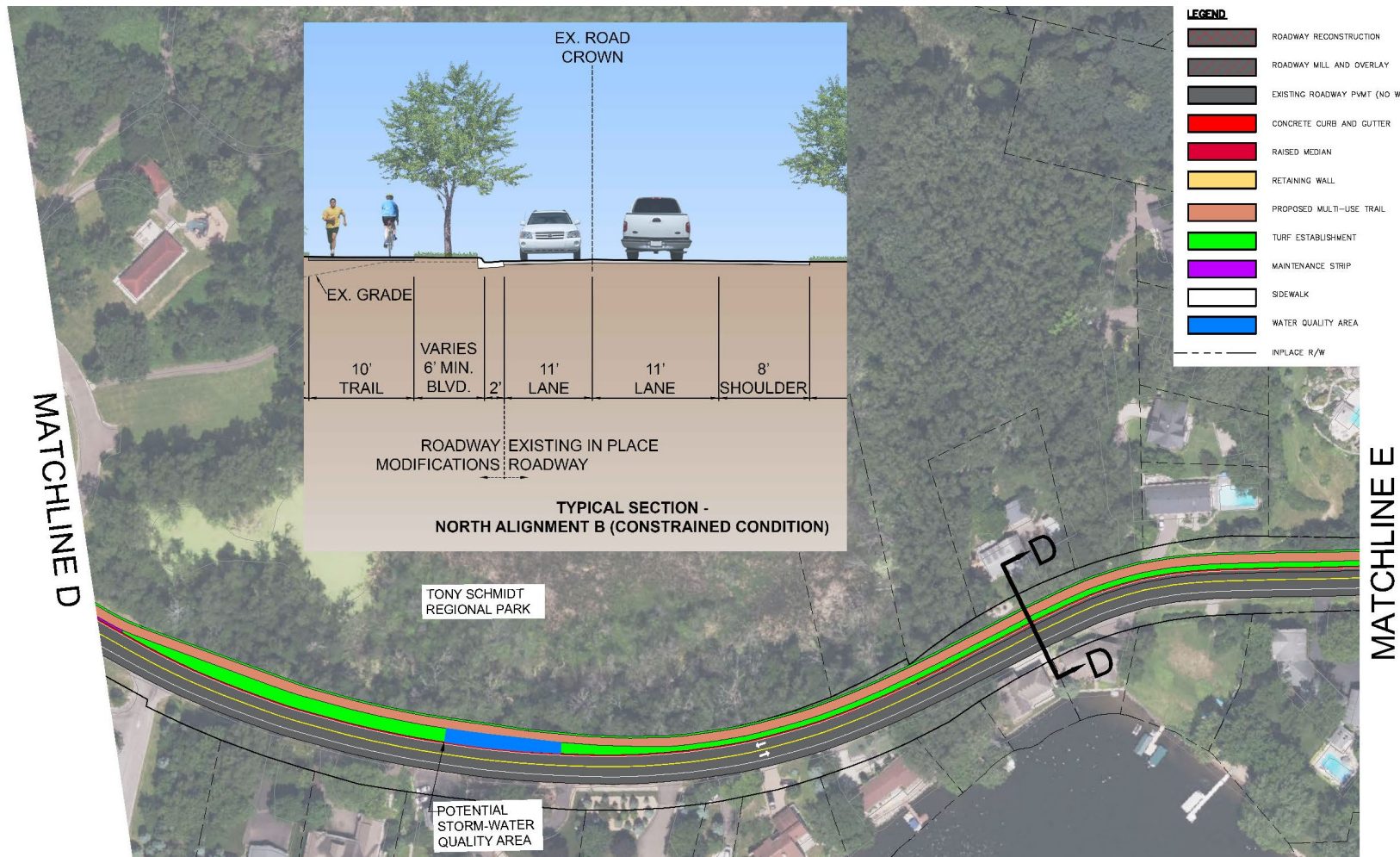
Tony Schmidt Park Area



Tony Schmidt Park to Siems Court



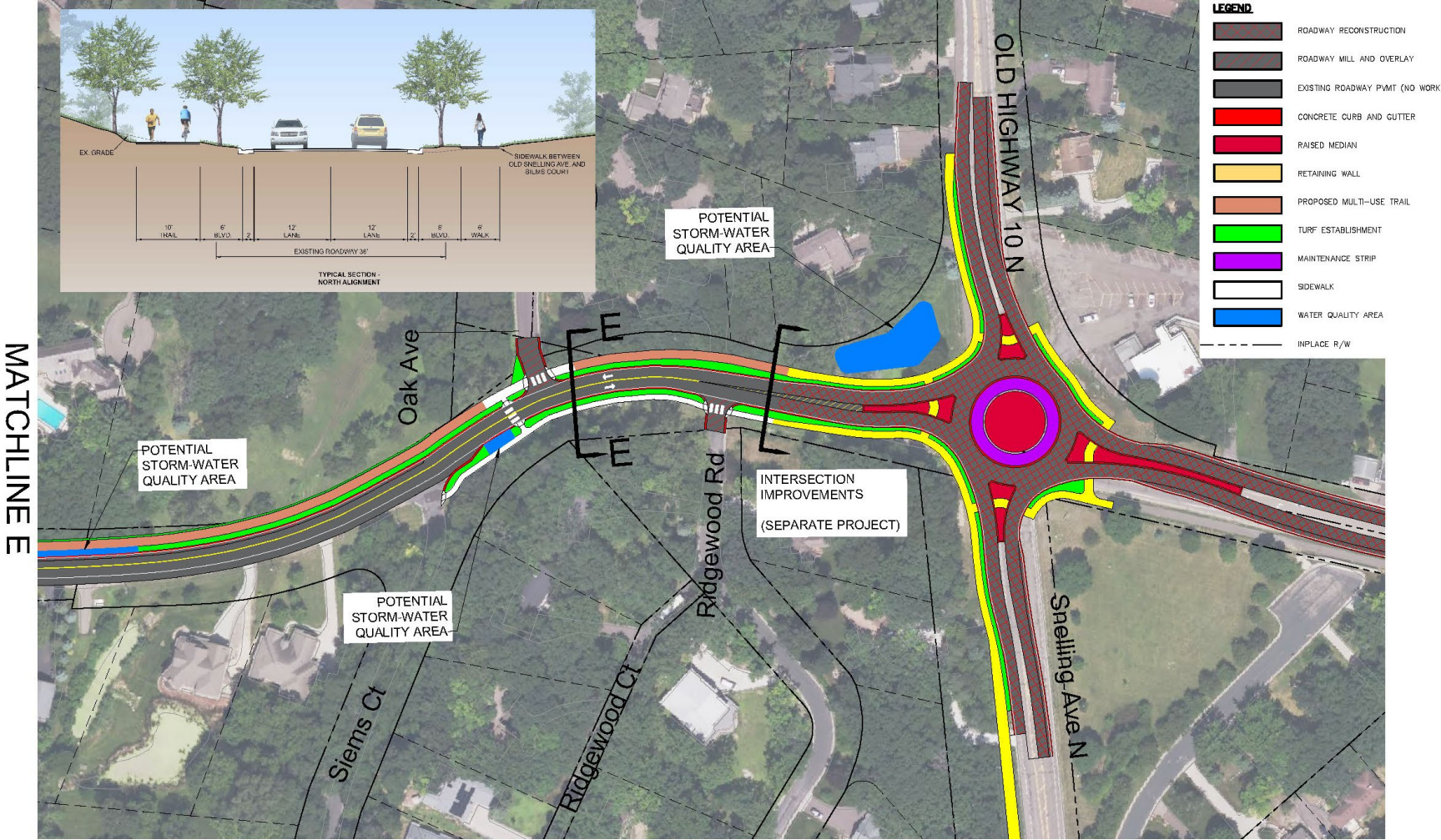
Tony Schmidt Park to Siems Ct.



Siems Court to Old Snelling Avenue



Siems Ct. to Old Snelling Ave

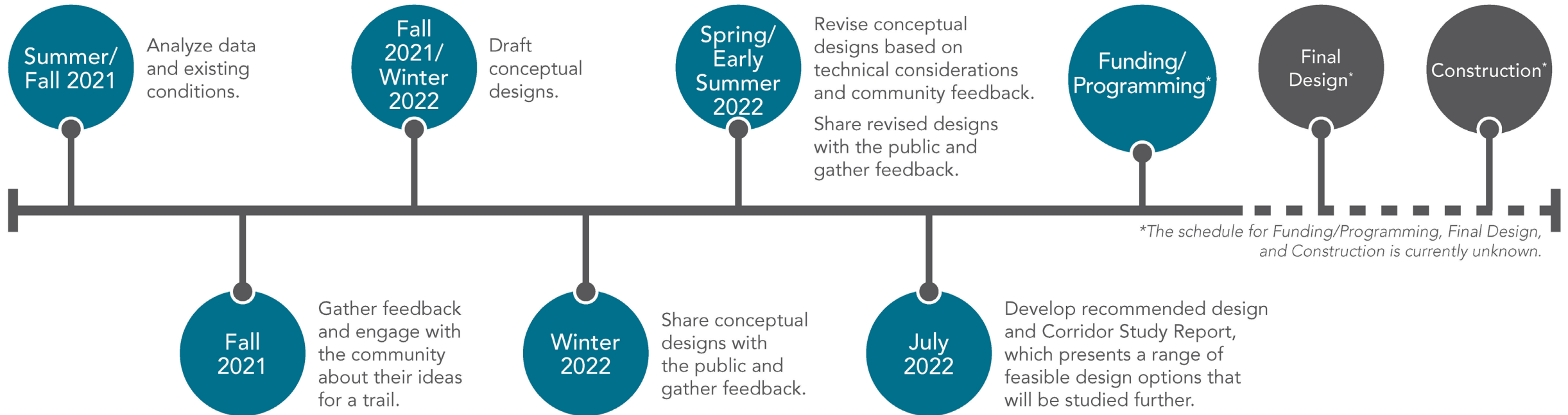


Stormwater Quality Considerations

- Explore and identify locations to catch and filter or infiltrate runoff prior to entering Lake Johanna
- Consider stormwater basins as visual amenities for trail users
- Develop trail routes that will be helpful to water quality infrastructure



Schedule



Next Steps

- Collect community feedback
- Develop recommended design and corridor study report
- The corridor study report will be used as a tool to solicit funding

Question and Answer

Stay Connected

- Share your comments, questions and concerns using our online comment form: ramseycounty.us/LakeJohannaBlvdTrail
 - The comment form will be open through August 7.
- Open House materials will be posted on the project website.
- Sign-up for email updates on the project website.

Questions? Contact:

Scott Mareck, Ramsey County Public Works

651-266-7140

scott.mareck@ramseycounty.us

Thank you!