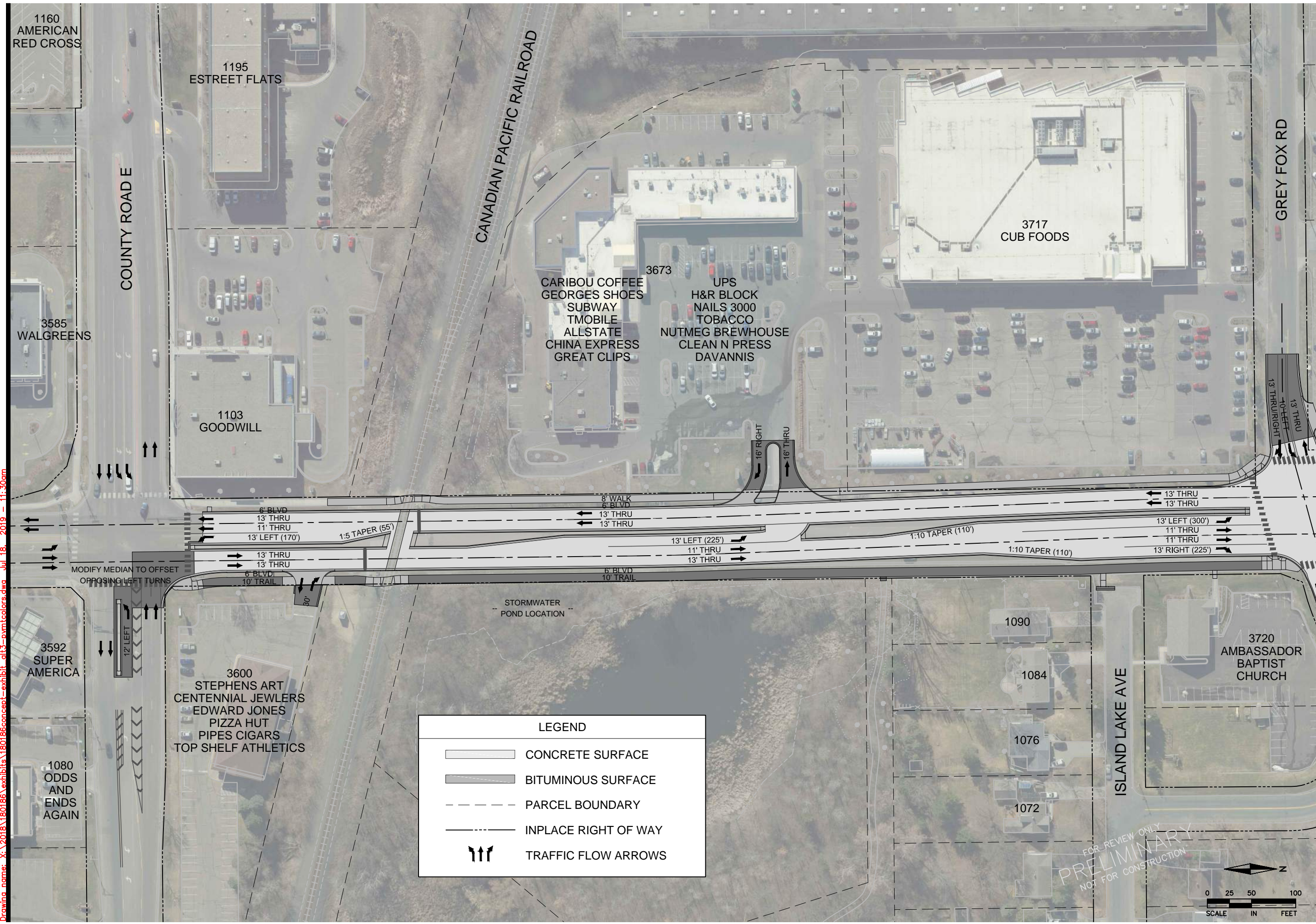
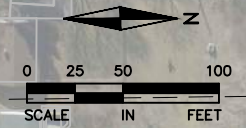


Drawing name: X:\2018\180166\exhibits\180166concept-exhibit-d13-pwmtcolors.dwg Jul 18, 2019 - 11:30am






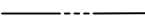

LEGEND	
	CONCRETE SURFACE
	BITUMINOUS SURFACE
	PARCEL BOUNDARY
	INPLACE RIGHT OF WAY
	TRAFFIC FLOW ARROWS

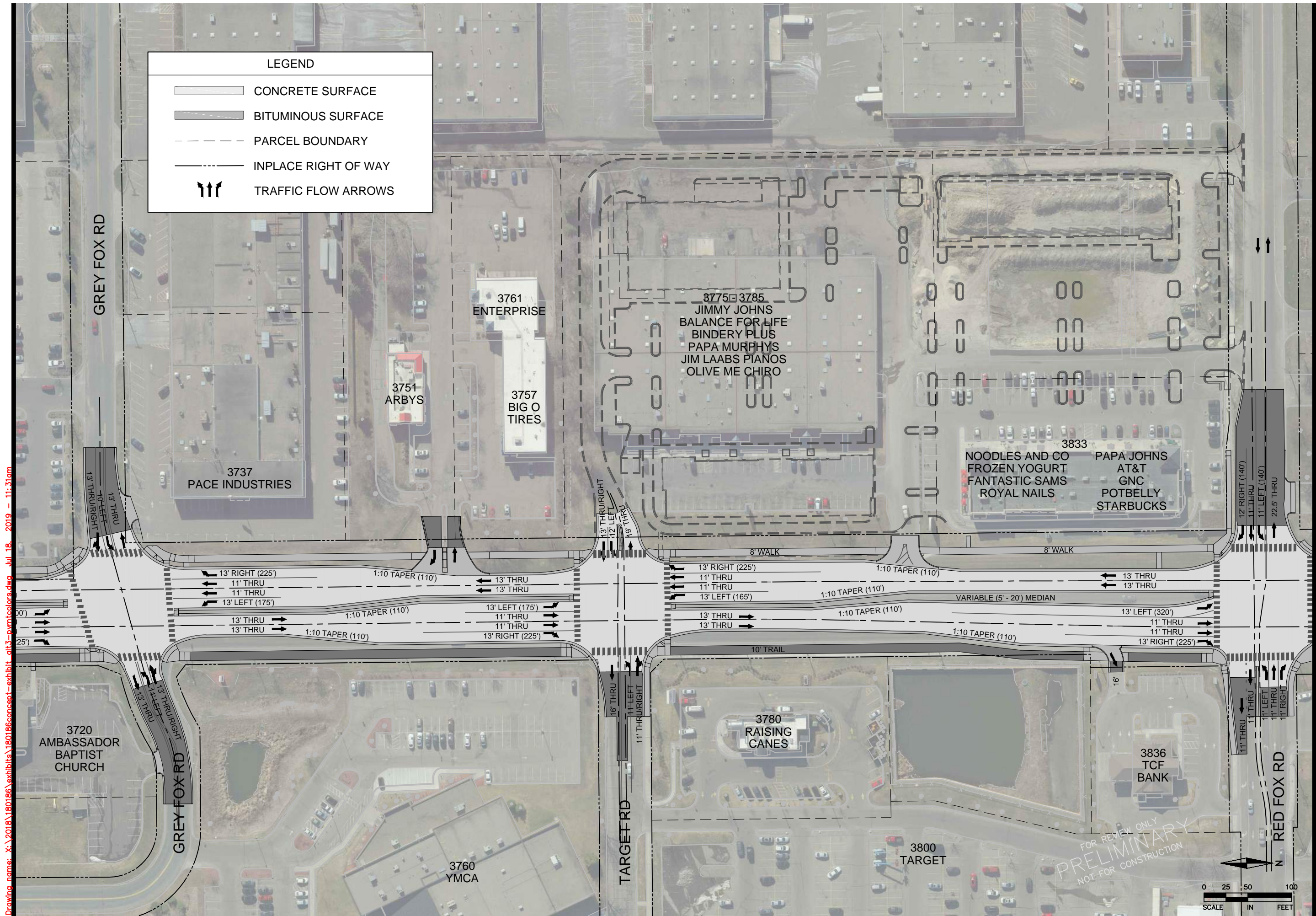
FOR REVIEW ONLY  
PRELIMINARY  
NOT FOR CONSTRUCTION





**LEGEND**

-  CONCRETE SURFACE
-  BITUMINOUS SURFACE
-  PARCEL BOUNDARY
-  INPLACE RIGHT OF WAY
-  TRAFFIC FLOW ARROWS



Drawing name: X:\2018\180166\exhibits\180166concept-exhibit.dwg Jul 18, 2019 - 11:31am

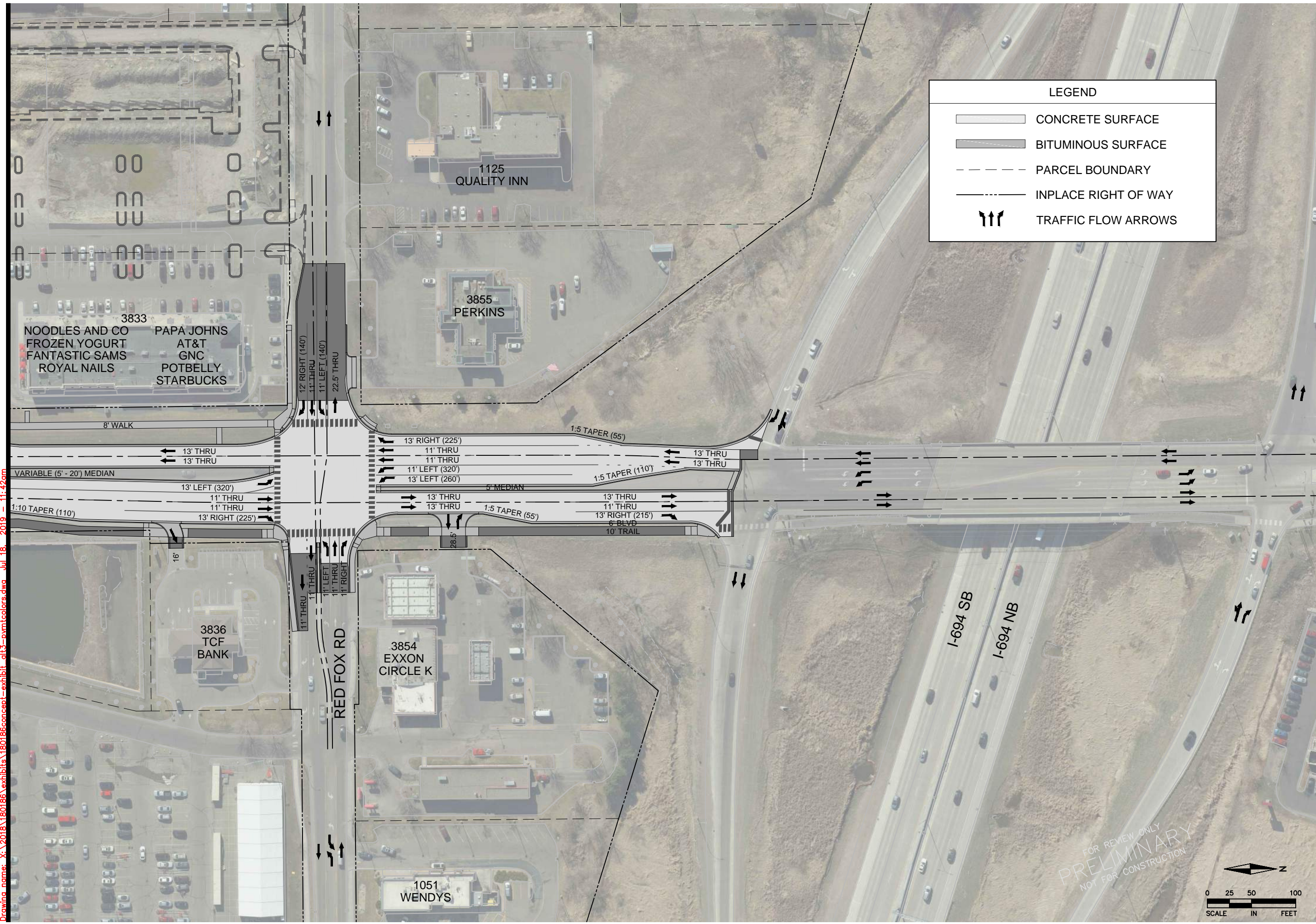
FOR REVIEW ONLY  
**PRELIMINARY**  
NOT FOR CONSTRUCTION

LEXINGTON AVENUE  
CONCEPT LAYOUT - PREFERRED ALTERNATIVE

GREY FOX RD  
TO  
RED FOX RD



LEGEND	
	CONCRETE SURFACE
	BITUMINOUS SURFACE
	PARCEL BOUNDARY
	INPLACE RIGHT OF WAY
	TRAFFIC FLOW ARROWS



Drawing name: X:\2018\180166\exhibits\180166concept-exhibit\_d13-pwmtcolors.dwg Jul 18, 2019 11:42am

FOR REVIEW ONLY  
**PRELIMINARY**  
NOT FOR CONSTRUCTION

LEXINGTON AVENUE  
CONCEPT LAYOUT - PREFERRED ALTERNATIVE  
RED FOX RD  
TO  
I-694