

RICE STREET VISIONING STUDY

Existing Conditions Engagement Summary

From October 2019 - July 2020, the project team gathered initial feedback about existing conditions on Rice Street. In this phase, the community let us know what is working on Rice Street, what isn't and ideas for the future.

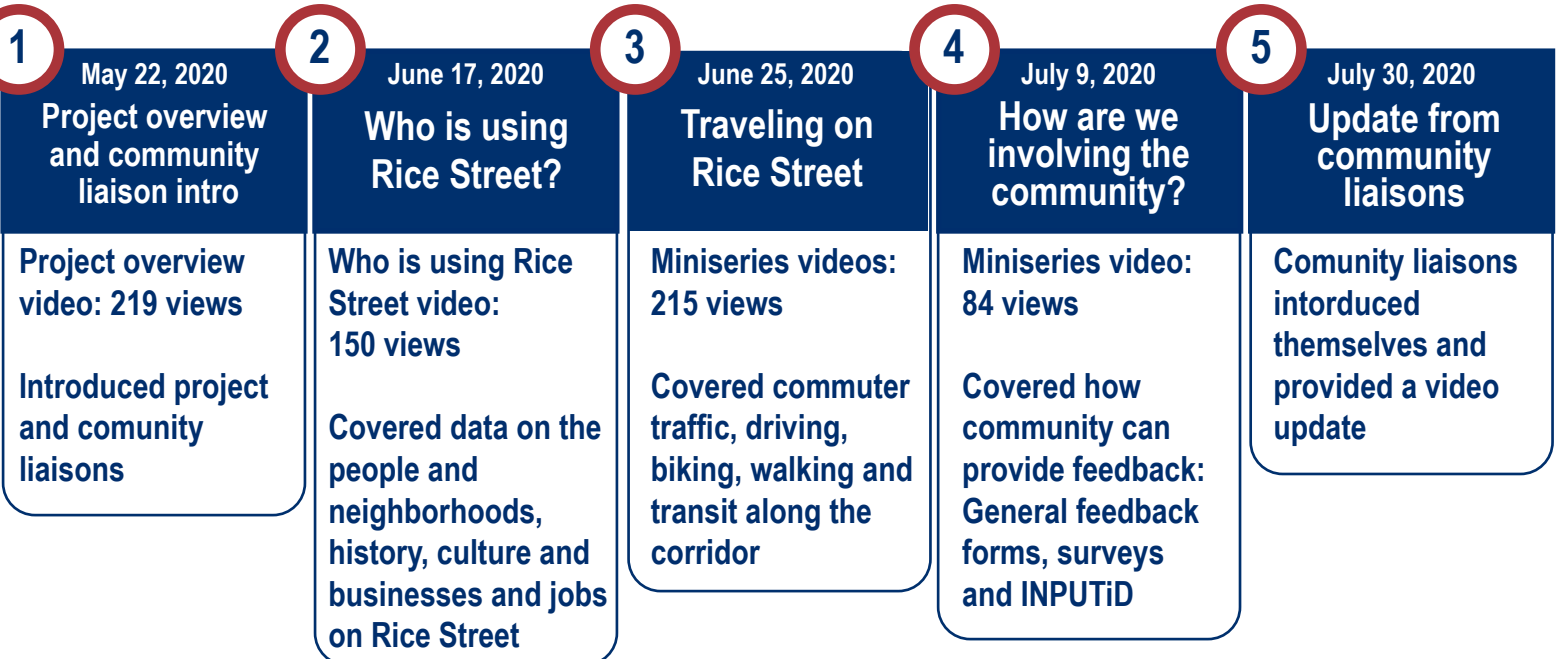
GATHER INITIAL FEEDBACK

Oct. 2019 Nov. Dec. Jan. Feb. March April May June July 2020

ENGAGEMENT SNAPSHOT



ONLINE ENGAGEMENT SERIES



RICE STREET VISIONING STUDY

PROJECT GOALS SURVEY

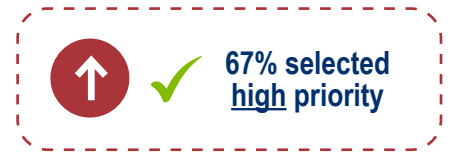
How do you travel on Rice Street?



How would you like to travel on Rice Street?



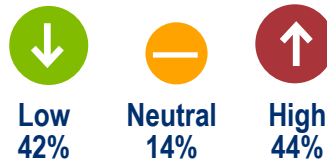
Should a more walkable corridor that encourages people to walk between destinations be a low or high priority?



Are the current street crossings a safety concern for pedestrians?



Should encouraging bicycle traffic on Rice Street be a low or high priority?

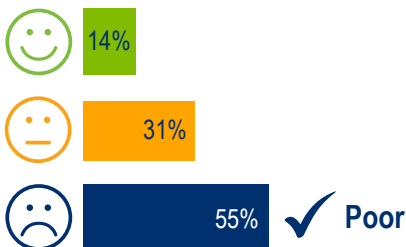


What are your top three priorities for Rice Street?

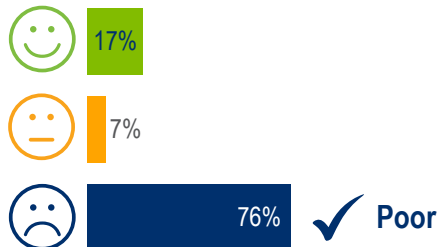


FACILITY RATINGS SURVEY

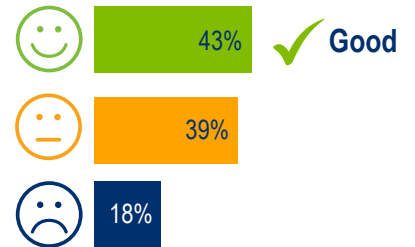
Pedestrians



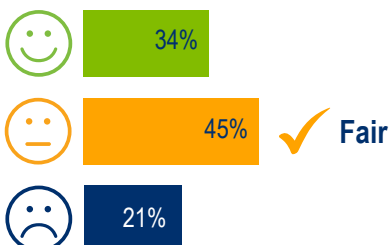
Bicyclists



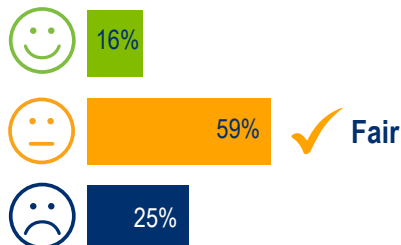
Transit



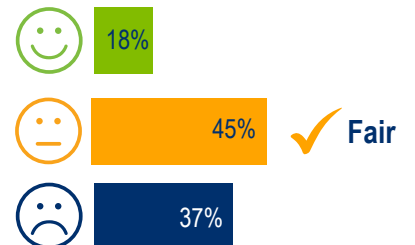
Passenger vehicles



Freight



Parking



RICE STREET VISIONING STUDY

TOP 5 INPUTID COMMENT TOPICS

40
Total

Likes and Ideas

22 Initial comments 18 Replies



More bike lanes that connect to trails, parks, and the downtown area



More attractive neighborhood design and green space



Promotion of local businesses, more restaurants and coffee shops, and more opportunity for youth employment



More intersections like Rice Street and Larpenteur Avenue that have slower speed limits and a 4-3 lane conversion



Lane reduction to promote alternative modes of transportation

Dislikes and Concerns

80
Total

33 Initial comments 47 Replies



Maintenance of sidewalks is poor, making it hard for pedestrian use and accessibility



Crossings at intersections are unsafe for all pedestrians such as bikers and walkers



Rice Street is too fast, causing many accidents and various safety concerns



Limited left turn lanes



Too little parking

WHAT'S NEXT FOR 2020?

From August - October 2020, community engagement will focus on a toolbox of design features that could be used to improve Rice Street. In this phase, please share your feedback on possible improvement options and which options are best for the Rice Street corridor.

TOOLBOX PHASE

ROADWAY DESIGN OPTIONS

July

Aug.

Sept.

Oct.

Nov.

Dec.