



POLICY ADVISORY COMMITTEE

Meeting #1

Virtual Meeting Procedures – Members

- Please mute your mic when not speaking.
- Please leave your video feed on if possible.
- If you wish to speak:
 - Please use the “raise hand” feature.
 - Unmute your mic.

Virtual Meeting Procedures – Public

- Public comments and questions will be taken at the end of the meeting.
- If you wish to speak:
 - Please use the “raise hand” feature.
 - Your name will be called.
 - Unmute your mic.
 - State your name and address for the record.
 - 3 minutes for comments.

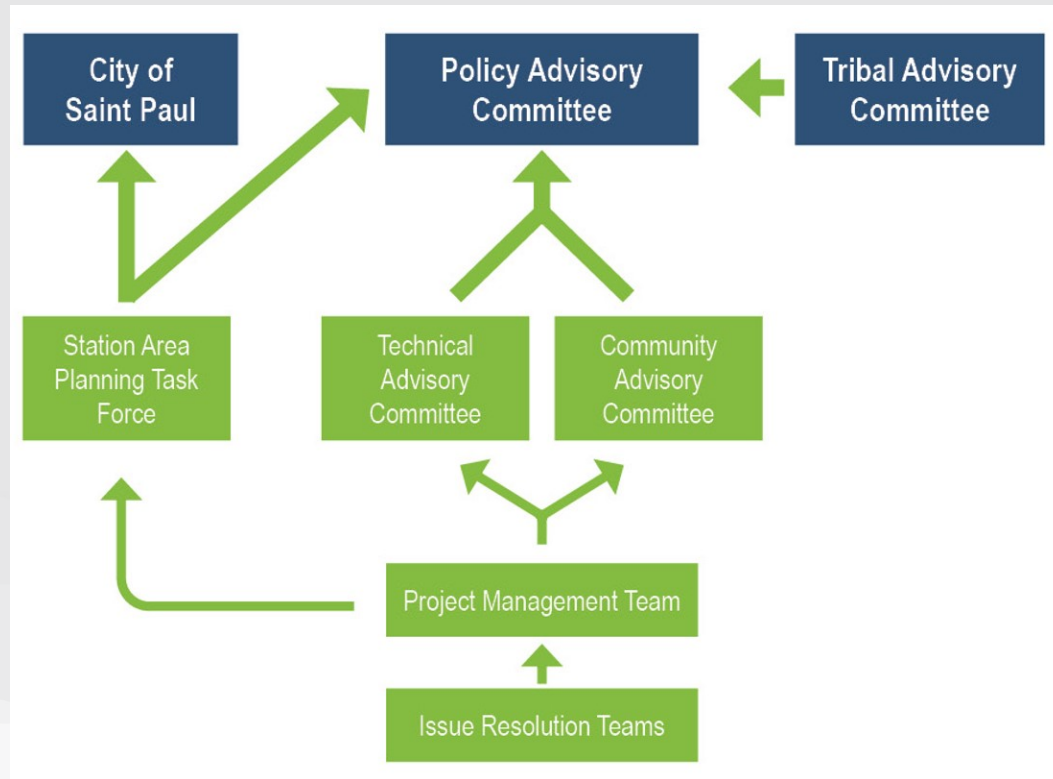
Welcome and Introductions

Approval of Meeting Calendar

- 2nd meeting February 4, 2021.
- Meet approximately every two months.
 - May flex based on decision timelines.

Policy Advisory Committee Roles and Responsibilities

Project Committees



Policy Advisory Committee Charter

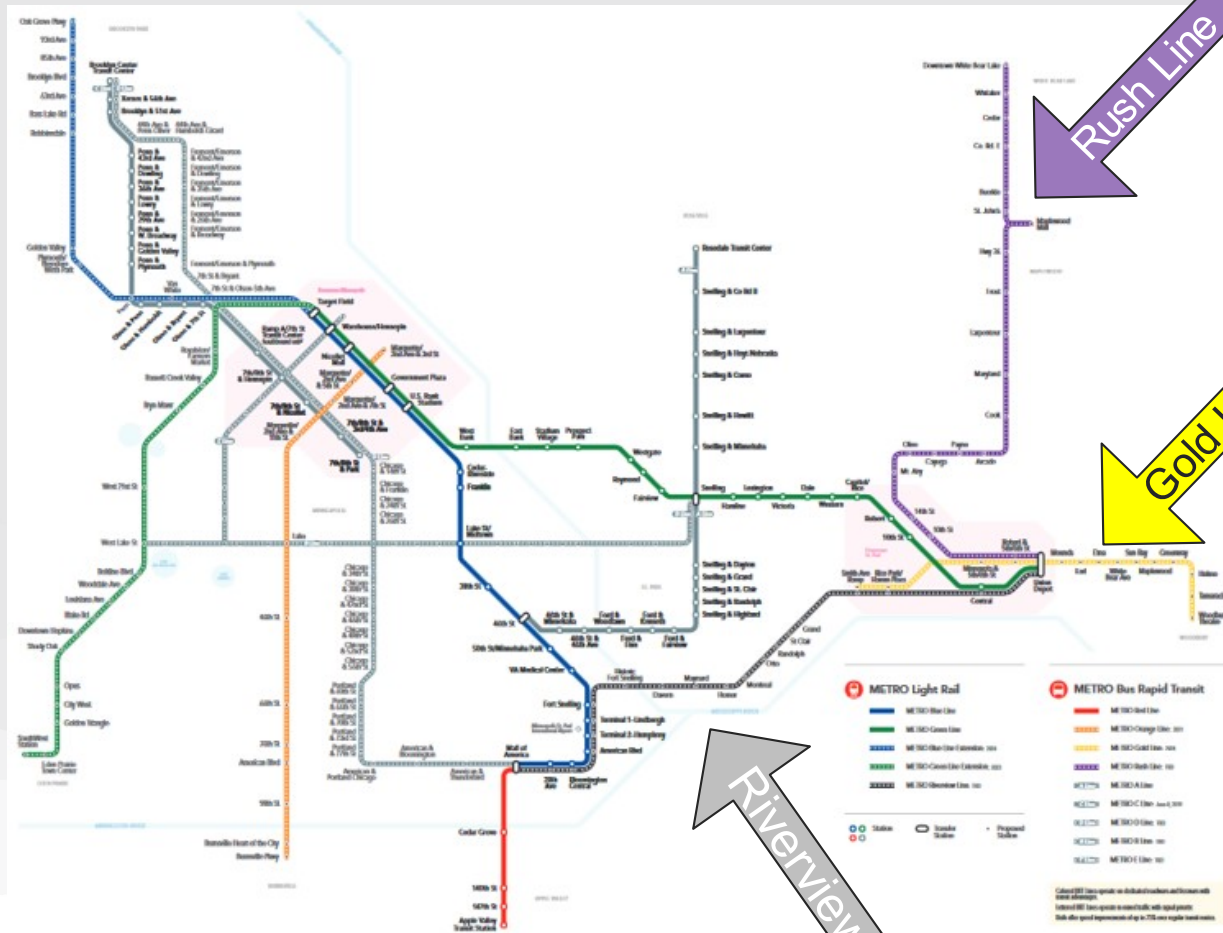
- Provide overall direction and guidance for the project.
- Meet approximately every two months.
- Use input and findings from technical committees, working groups and advisory committees.
- Make recommendations on project approvals and next phases to governing agencies.

Membership

- Ramsey County.
- Hennepin County.
- Saint Paul.
- Bloomington.
- Saint Paul Area Chamber of Commerce.
- Business representative.
- Community representative.
- Metropolitan Airports Commission.
- Minnesota Department of Transportation.
- Metropolitan Council
- Minneapolis Park and Recreation Board.
- Saint Paul Arena Company.
- Hospitals.
- Local Laborer's Union #563.

Locally Preferred Alternative Overview

Future Rapid Transit Network



Needs of the Corridor

- To enhance mobility and access to opportunities for residents, businesses, and the region and to cultivate economic prosperity

Growing **population** and **employment** increases travel demand for different travel markets



Transit-reliant population also needs improved transit service



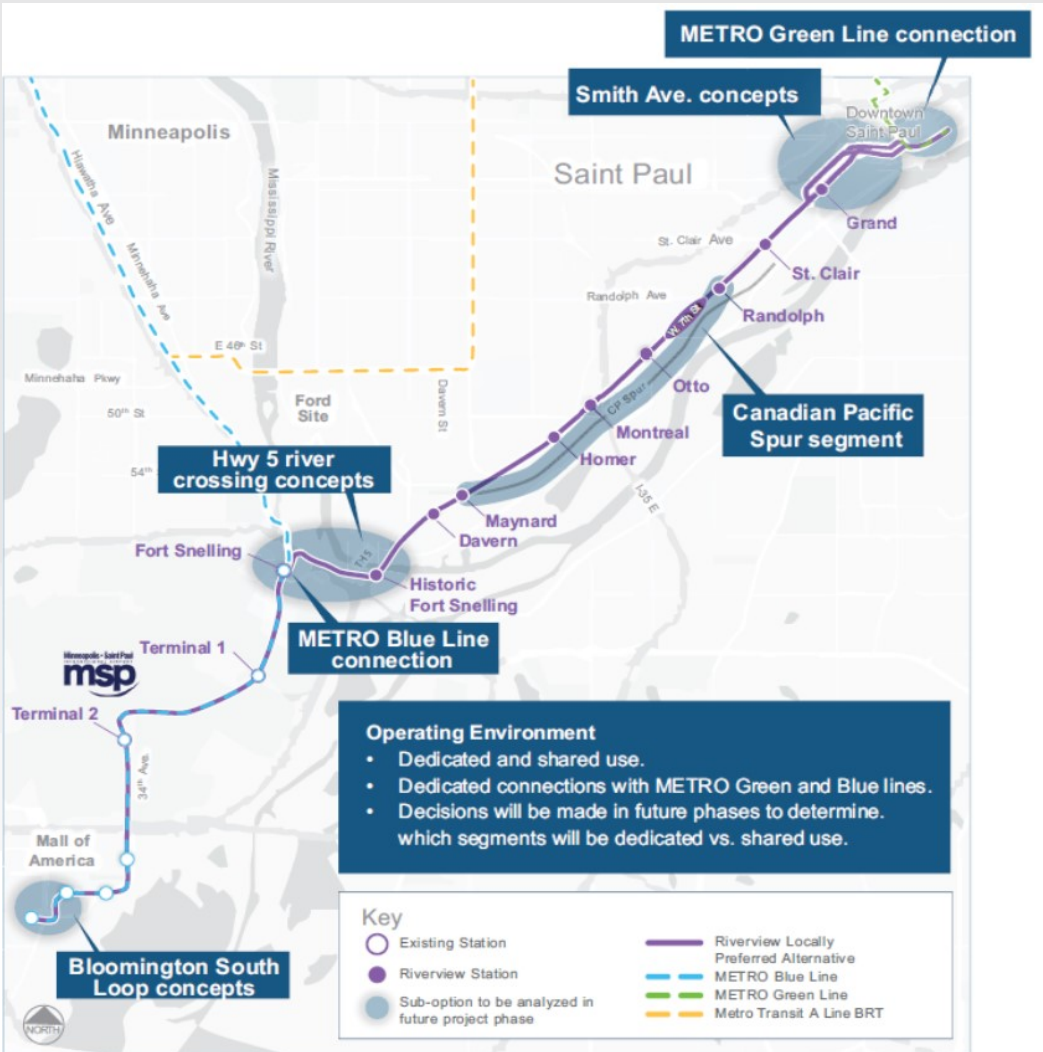
Limited opportunity to **improve** the existing **transportation network**



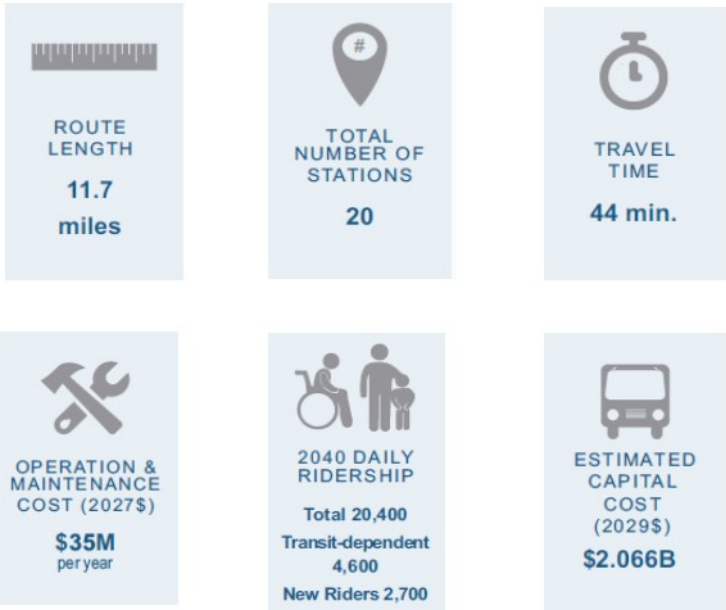
Support and catalyze **reinvestment** and **economic development**



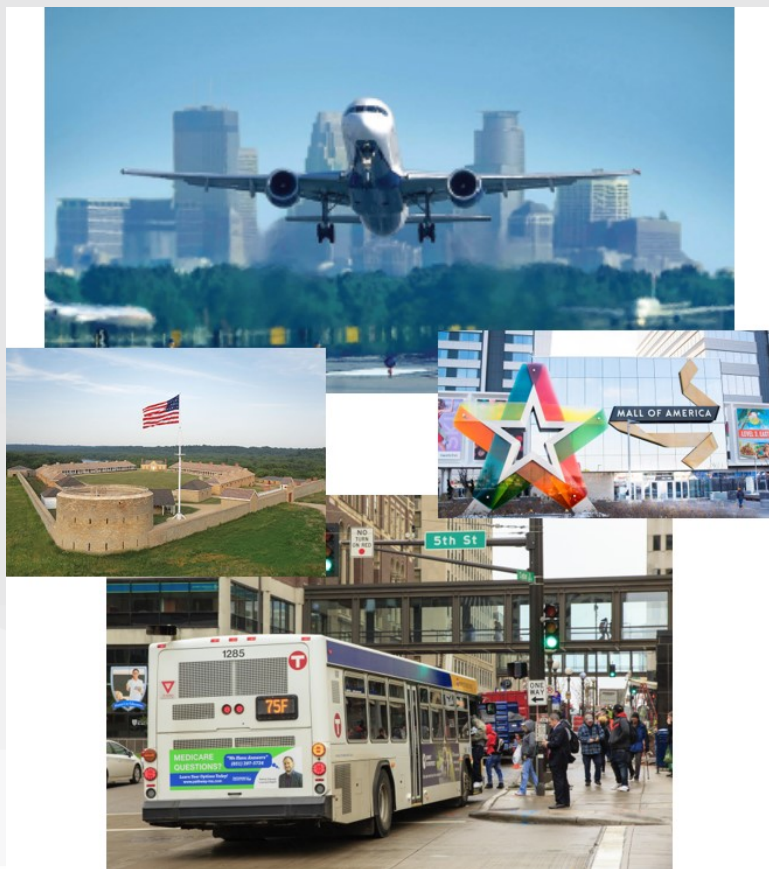
Locally Preferred Alternative: Modern Streetcar



Key Characteristics



Serves Major Destinations and Neighborhoods



- Downtown Saint Paul.
- Fort Snelling at Bdote.
- Minneapolis-St. Paul International Airport.
- Mall of America and South Loop.
- Highland Park and West 7th Street neighborhoods.

Implementation Plan



ongoing public and stakeholder engagement



WE
ARE
HERE

ENGINEERING &
PRE-ENVIRONMENTAL

3 yrs

- > Initiate environmental, cultural, and socio-economic data gathering
- > Advance engineering up to 25%

PROJECT
DEVELOPMENT

2 yrs

- > Complete the Environmental Impact Statement
- > Advance engineering/design

ENGINEERING

2 yrs

- > Complete engineering/design

CONSTRUCTION

3-4
yrs

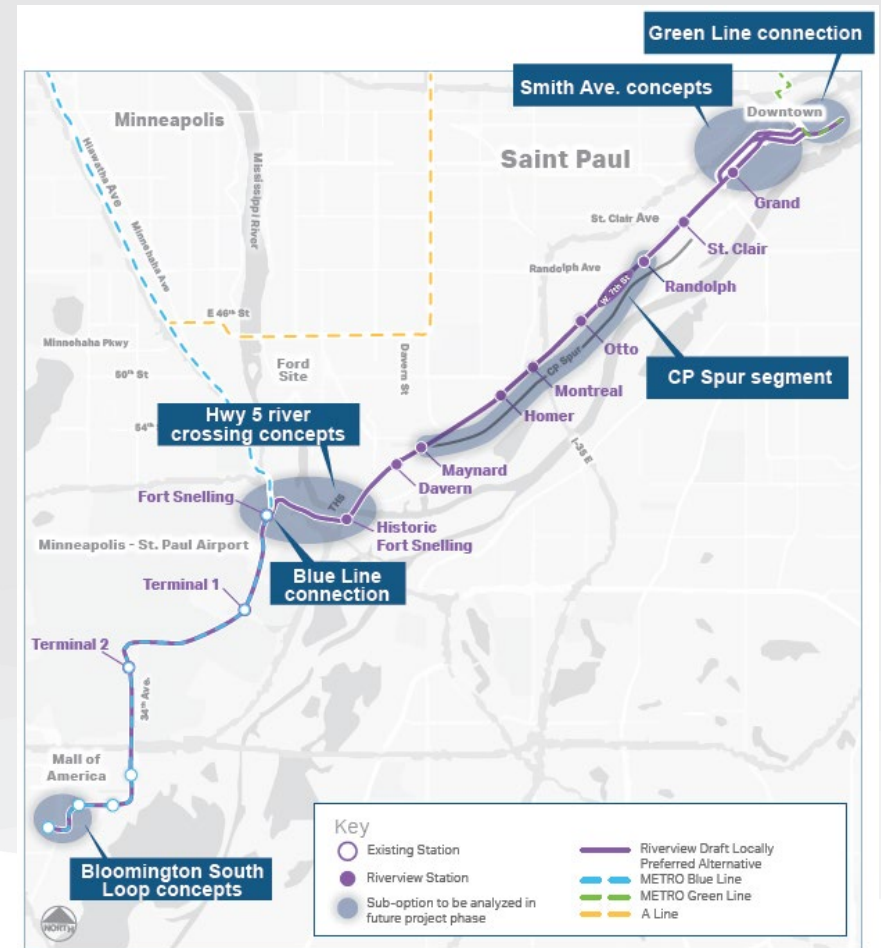
- > Full Funding Grant Agreement



Federal Transit Administration Approval Point

Engineering and Pre-Environmental Phase

- Alternatives
 - Streetcar (Locally Preferred Alternative).
 - No Build.
- Route
 - Light rail transit connections.
 - Seven Corners/Smith Avenue.
 - CP Spur parallel to West 7th Street.
 - Highway 5 river crossing.
 - Bloomington South Loop/Mall of America.
- Operating environment
 - Dedicated and shared use.
 - Center- or side-running.



Key Technical Issues



- Streetscape.
- Public safety.
- Right-of-way.
- Turnbacks.
- Construction impacts.
- Special events.
- Utilities.
- Structures.

Key Technical Issues



- Traffic analysis.
- On-street parking.
- Transit service.
- International airport.
- Stations.
- Railroad coordination.
- Operations and maintenance facility.

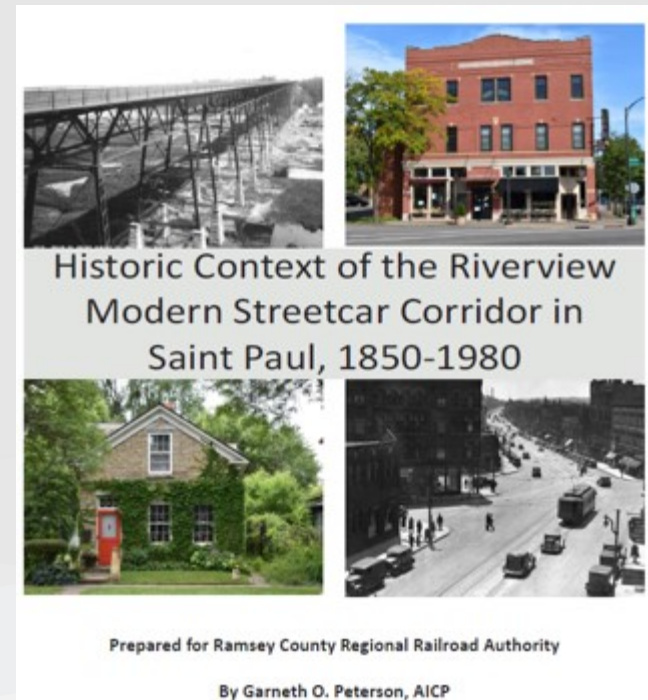
Tribal Coordination



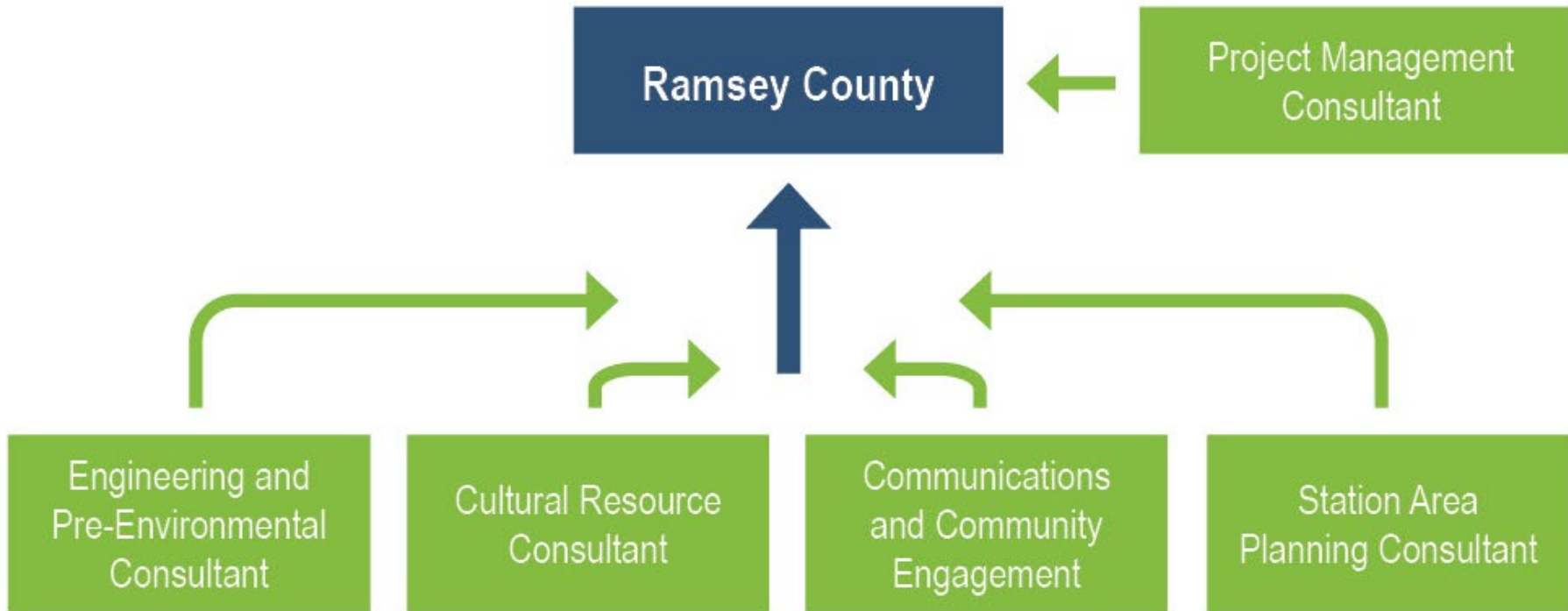
- Entire corridor of interest.
- 11 Federally recognized Tribes, though Dakota Tribes have expressed the most interest.
- FTA has initiated Section 106 consultation.

Previously Completed Work

- Downtown to Mississippi River.
 - Historic Context and Archaeological Literature Search.
- Topographical mapping and survey.
 - Georeferenced digital orthophotos.
 - Planimetric map.
 - Select bridge clearances.



Work Scope: Engineering and Pre-Environmental Phase



Engineering and Pre-Environmental

Approach – Months 1-15



Key Tasks – Months 1-15

Locally Preferred Alternative Refinement.

- Concept engineering/issue resolution.
- Traffic, structures, utilities, groundwater, geotechnical.
- Costs and ridership.
- Operations and vehicle type.
- Operation and maintenance facility.

Issue Resolution Teams

- Smaller groups to discuss and resolve technical issues.
- Grouped by geography.
 - Saint Paul (Downtown).
 - Saint Paul (General).
 - Mississippi River Crossing/Fort Snelling area.
 - Bloomington.

Approach – Months 16-36

Focus on two build alternatives.

- Continued engineering.
 - Continuation of Issue Resolution Teams.
 - Up to 25% engineering in critical areas.
- Environmental analysis.
 - Technical reports to inform next phase.
- Compilation of Engineering and Pre-Environmental summary document.

Cultural Resources

Cultural Resources Key Tasks

- Background research and define study area.
- Survey of archaeological and historic resources.
- Reports recommending eligibility of resources for further study.
- Tribal coordination.

Station Area Planning

Station Area Planning Key Tasks

- Review of previous and ongoing initiatives.
- Draft station area plans.
 - Platform locations, boundaries, connections.
- Station Area Planning Task Force.
- Coordination with engineering team.

Communications and Community Engagement

Communications and Community Engagement Key Tasks

- Planning documents.
 - Strategic communications, community engagement, social media, meetings and events, crisis management.
- Communication product development.
- Community engagement.
- Media relations.
- Committee meetings.
- Establish metrics.

Will reflect key decision points, topics, and engagement needs.

Project Management Consultant

Key Tasks

- Act as extension of Ramsey County staff.
- Process compliance and deliverable review.
 - Engineering & Design.
 - Pre-Environmental.
 - Ridership.
 - Cost (capital and operating & maintenance).
- Risk management.
- Strategic Management Team.

Project Schedule and Upcoming Tasks

Draft Milestone Schedule

	2020	2021				2022				2023			
	Q4	Q1	Q2	Q3	Q4	Q1	Q2	Q3	Q4	Q1	Q2	Q3	
Public Engagement		[Green bar spanning from Q4 2020 to Q3 2023]											
Project Committee Coordination	[Blue bar spanning from Q4 2020 to Q3 2023]												
Refine LPA/Identify Build Alternative(s)	[Green bar spanning from Q4 2020 to Q4 2021, with an orange star in Q4 2021]												
Advance alternatives	[Blue bar spanning from Q4 2021 to Q3 2022]												
Environmental Analysis	[Green bar spanning from Q1 2021 to Q3 2022]												
Station Area Planning	[Blue bar spanning from Q4 2020 to Q3 2022]												
Streetscape Plan	[Green bar spanning from Q1 2022 to Q3 2023]												
Cultural Resources Assessment	[Blue bar spanning from Q3 2021 to Q3 2022]												
FTA CIG Program and Project Development Application	[Green bar spanning from Q1 2023 to Q3 2023]												
Compile EPE Document	[Blue bar spanning from Q1 2023 to Q3 2023]												

Learning from Place: Bdote



SUCCESSFUL TRIBAL COORDINATION

CULTURAL EDUCATION

Upcoming Tasks – Plans and Processes

- Coordinate master schedule.
- Committee roadmap.
- Consultant coordination plan.
- Quality management plan.
- Various communications plans.

Upcoming Tasks - Technical

- Data gathering.
- Summarize previous and ongoing initiatives.
- Establish alternatives/LPA refinement process.
- Create comprehensive list of issues and prioritize.
- Form Issue Resolution Teams.

Committee Membership Applications

Community Advisory Committee

Roles and Responsibilities	<ul style="list-style-type: none"> • Provide input to the PAC on issues of concern along the Corridor, from perspective of the group or area the member is representing. • Advise on community engagement processes and help distribute information. • Participate and assist in smaller working groups as needed.
Membership	<ul style="list-style-type: none"> • 15-20 members. • Members chosen by PAC through an application process. • Co-Chairs will be chosen by the committee. • Emphasis on selecting members who can represent the residential and business diversity while balancing needs of the Corridor.
Task Force Duration	<ul style="list-style-type: none"> • Expected to meet throughout the 3-year study period. • Meets quarterly.
Meeting Location	<ul style="list-style-type: none"> • During COVID, meetings will be virtual. • Post-COVID, meetings will ideally occur at a transit-accessible location within the Corridor.

Station Area Planning Task Force

Roles and Responsibilities	<ul style="list-style-type: none"> • Guide development of station area plans in Saint Paul. • Recommend approval of plans to the PAC and Saint Paul City Council.
Membership	<ul style="list-style-type: none"> • Up to 20 members. • One Chair will be a member of the Saint Paul Planning Commission appointed by the City. The other will be chosen by the Task Force. • Co-Chairs of the Community Advisory Committee will be ex-officio members. • Balance of membership to be chosen by Policy Advisory Committee through an application process. • Emphasis on selecting members who can represent diversity of the station areas while balancing needs of the Corridor.
Task Force Duration	<ul style="list-style-type: none"> • Expected to meet every one to two months throughout the 3-year study period.
Meeting Location	<ul style="list-style-type: none"> • During COVID, meetings will be virtual. • Post-COVID, meetings will ideally occur at a transit-accessible location within the Corridor.

Public Comment

Virtual Meeting Procedures – Public

- If you wish to speak:
 - Please use the “raise hand” feature.
 - Your name will be called.
 - Unmute your mic.
 - State your name and address for the record.
 - 3 minutes for comments.

Next Meeting – February 4, 2021

THANK YOU!

LEARN MORE: RIVERVIEWCORRIDOR.COM

