

Merhaba Mu Amuhezwi Marhaban
Namaste Accueillir Hoan Ngenh
Toivottaa Salve Baruch Haba Kaabo Herzlich
Raxim Itegez Volkommen Maruhabaa Aloxar Bon Bini
Dobredojde Sanna Dazawa Menerima Weltsualuleg
Maeva Croeso Selamat Datang Hos Geldiniz Salve Ongietorri
Sanna Dazawa Willkommen Bonavinuta Hospedar
Valkomna Benvingut Bienvenida Hos Geldiniz Ahlan Wa Sahlan Benvenuto Benvenuto
Maeya E Komo Mai Merhaba Salve Isten Hozta
Willkommen Mire Se Vjen Accueillir Ahlan Wa Sahlan Bienvenuto Benvenuto
Croesawa Salve Bon Juntu Bienvenius Swagatam Siya Namkela Nonke
Acollir Benvingut Goscic Tervetuloa Albergar
Sanna Dazawa Xush Kelibsiz Valkomna Albergar Bine Ati Venit
Welkom Sveiki Atvyke Bonvenon Greet Menerima Velkommen Mabuhay Accipere Bainvegri
Namaste Sveiki Atvyke Gratias Mihi Venis Welcome Shalom Accogliere Malipayeng Pagabot
Accueillir Hos Geldiniz Kalos Orisate Toivottaa Velkomnin Dobrodosli Mire Se Vjen
Aloxar Valkomna Accipere Wellkumma Maruhabaa Wellkumma Hwangyong Hamnida Goscic
Aloha Bienvenius Recoger Maeva Youkoso Wozor
Laijni Ludzam Acollir Ennidos Witajcie Ghini Vinishi Irasshaimase Bonavinuta Greet Failte Recoger
Youkoso Bon Juntu Hospedar Tervetuloa Degemer Mat Huan Ying Guang Lin Bienvenue Bonvenon
E Komo Mai Witajcie Huan Ying Guang Lin Bienveni Bine Ati Venit Tere Tulemast Bienveni Valkommen
Failte Tikilluarit Irasshaimase Dobredojde
Swagatam Bienveni Accipere Ghini Vinishi Dobrodosli Maeya Wellkom Bienvenida Ontvangen
Accogliere Uvitani Ennidos Accogliere Shalom Uvitani
Tere Tulemast Marhaban
Yindii Ton Rap Ahlan Wa Sahlan Marhaban
Tikilluarit Gratus Mihi Venis





COMMUNITY ADVISORY COMMITTEE

Meeting #1

Land Acknowledgement

Every community owes its existence and vitality to generations from around the world who contributed their hopes, dreams, and energy to making the history that led to this moment. Some were brought here against their will, some were drawn to leave their distant homes in hope of a better life, and some have lived on this land since time immemorial. Truth and acknowledgment are critical to building mutual respect and connection across all barriers of heritage and difference.

We are standing on the ancestral lands of the Dakota People. We want to acknowledge the Ojibwe, the Ho Chunk and the other nations of people who also called this place home. We pay respects to their elders past and present. Please take a moment to consider the treaties made by the tribal nations that entitle non-Native people to live and work on traditional Native lands. Consider the many legacies of violence, displacement, migration, and settlement that bring us together here today. And please join us in uncovering such truths at any and all public events.

The acknowledgment given in the USDAC Honor Native Land Guide - edited to reflect Minnesota tribes. In review with SIA and endorsed by Shannon Geshick, Executive Director Minnesota Indian Affairs Council.

Introductions

Introduce yourself!

- What are your name and preferred pronouns?
- Why did you want to be on the Community Advisory Committee?
- What does a successful Riverview Corridor look like for you?

Housekeeping

Group Agreements

- Be open-minded.
- Listen actively/respectfully when others are speaking.
- Speak from your own experience instead of generalizing (Use "I" instead of "they," "we," and "you").
- Respectfully ask challenging questions and refrain from personal attacks.
- Be engaged and provide feedback.
- The goal is not to always agree — it is to gain a deeper understanding.
- Be aware of your facial expressions — they can be perceived as disrespectful as words.
- Do not dominate the discussion, allow others to be heard.
- "Step Up and Step Back!"

Virtual Meeting Procedures – Members

- Please mute your mic when not speaking.
- Please leave your video feed on if possible.
- If you wish to speak:
 - Please use the “raise hand” feature.
 - Unmute your mic.

File Storage/Sharing

- Community Advisory Committee members may access relevant materials on a dedicated file sharing site.
- A secured link will be sent to members via email.
- Example items to be shared include:
 - Meeting agendas.
 - Meeting presentations.
 - Meeting notes.
 - Other relevant project documents (e.g., charter, draft plans, etc.)

Community Advisory Committee Charter and Meeting Expectations

Charter Overview

Roles and Responsibilities	<ul style="list-style-type: none"> • Advise the Policy Advisory Committee on project design, environmental analysis and community engagement opportunities and techniques. • Participate and assist in coordinating with specific working groups.
Membership	<ul style="list-style-type: none"> • 25 members. • Membership chosen by Policy Advisory Committee through the application process. • Emphasis on selecting members who can represent diversity of the population, business owners and workers in the corridor. • Led by two Co-Chairs be chosen by the Committee membership. • Co-Chairs of the Station Area Planning Task Force will be ex-officio members of the Community Advisory Committee.
Duration and Meeting Frequency	<ul style="list-style-type: none"> • Expected to meet every three months throughout the approximately 3-year study period (early 2021 to late 2023).
Meeting Location	<ul style="list-style-type: none"> • During COVID-19, meetings will be virtual. • Post-COVID-19, meetings will be held at a transit-accessible location within the corridor.

Role of Community Advisory Committee

- Provide advisory input and guidance on:
 - Project development.
 - Engagement process.
- Representing community views, perspectives, and diversity.
- Not final decision-maker on the project.

Co-Chair Roles and Selection Process

- Assist in facilitating meeting agenda and group discussion.
- Represent the Community Advisory Committee at Policy Advisory Committee.
- Selection: Nominations followed by anonymous committee vote.

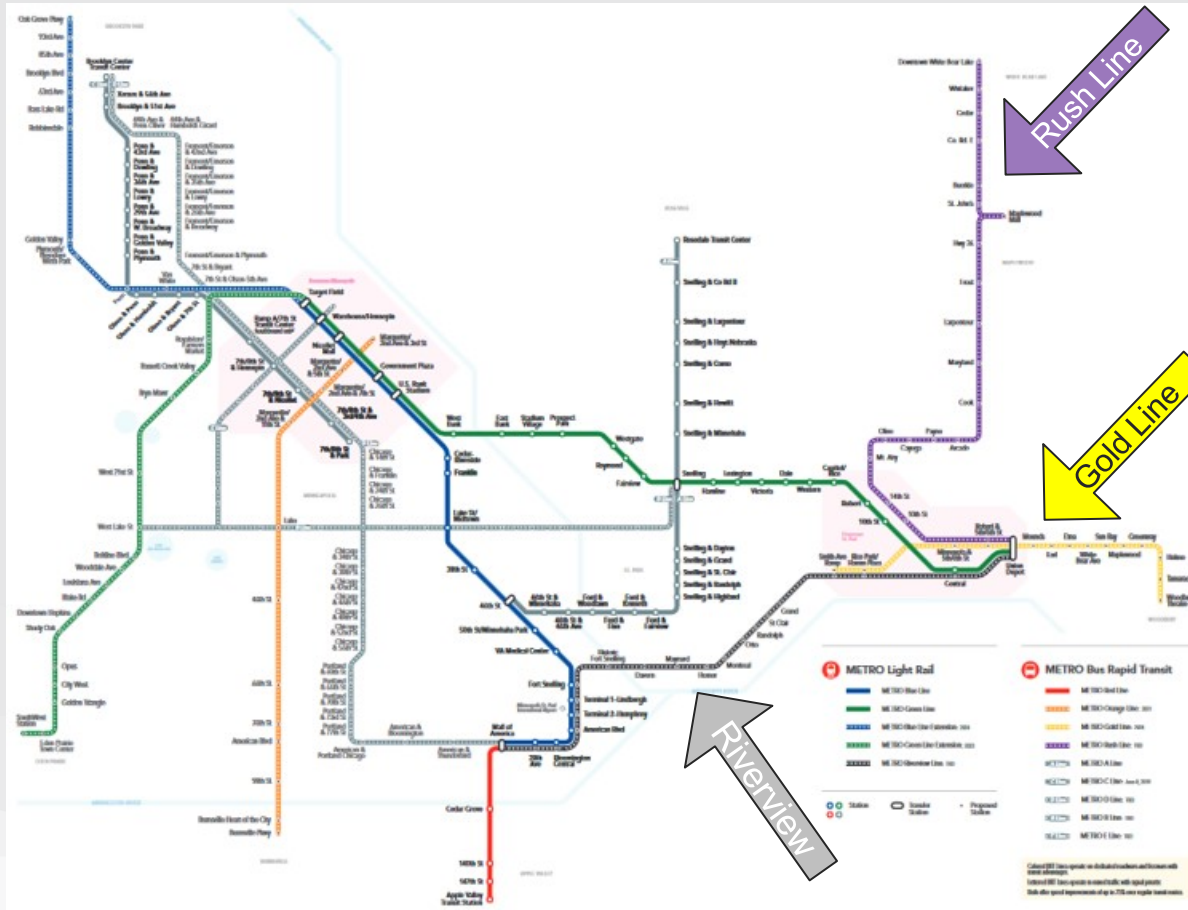
Meeting Format and Expectations

- Project staff presentations.
- Facilitated discussions.
- Consensus-based decision-making.
- Expectations of members:
 - Reviewing materials in advance.
 - Respectful discussion.

Project Overview

Project History and Goals

Future Rapid Transit Network



Previous Studies

1998

- Phase 1 Riverview Corridor Study

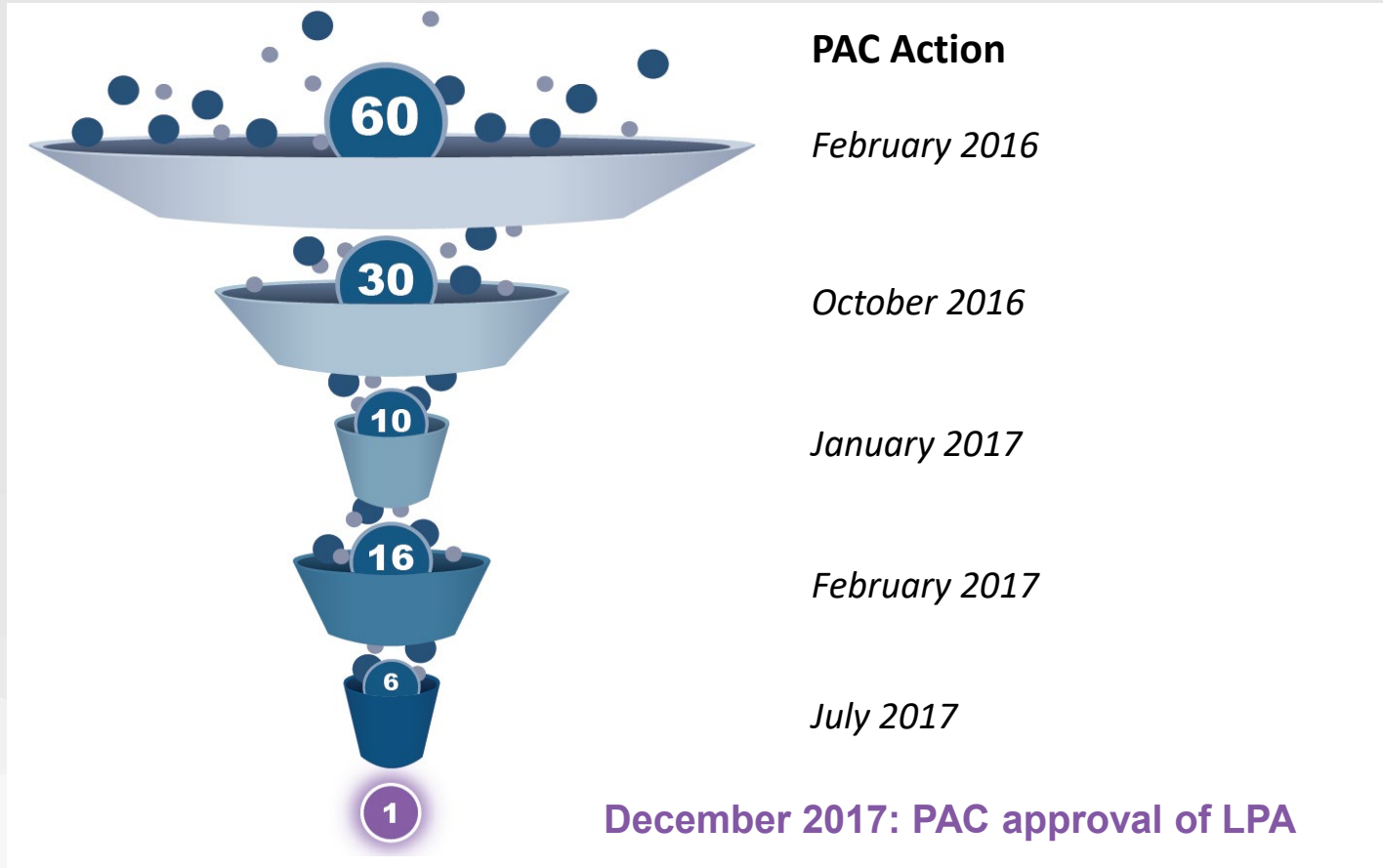
2000

- Riverview Major Investment Study

2017

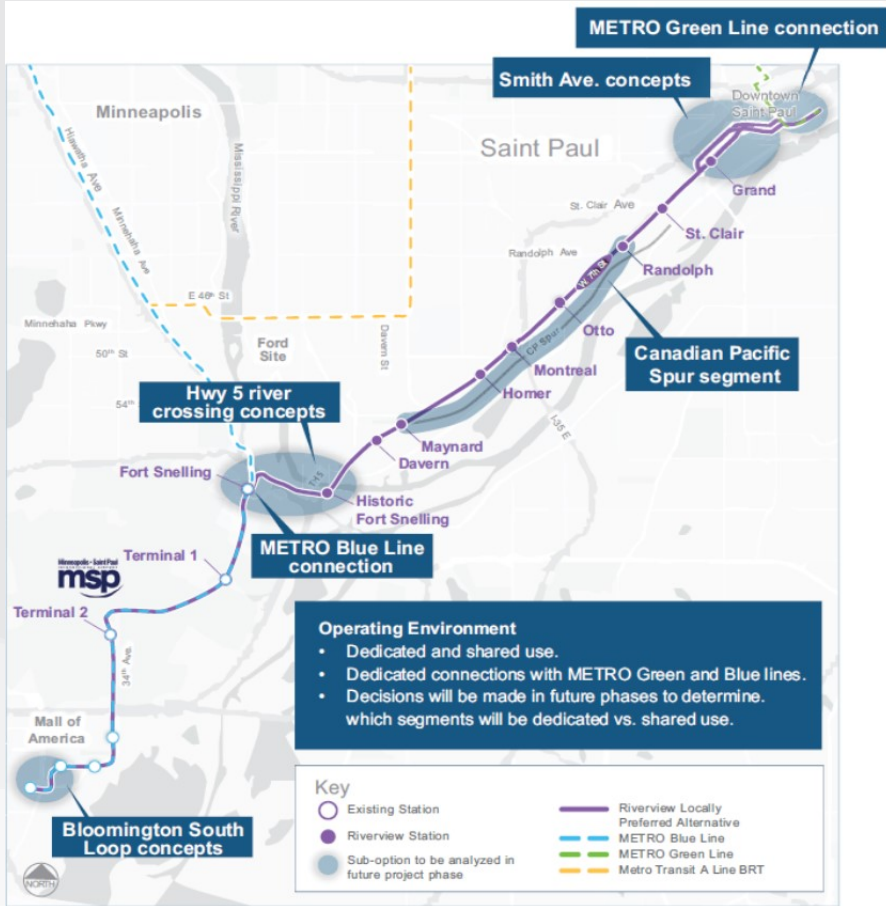
- Riverview Pre-Project Development Study

Pre-Project Development Study Locally Preferred Alternative Process



Locally Preferred Alternative

Locally Preferred Alternative: Modern Streetcar



Key Characteristics

ROUTE LENGTH

11.7 miles

TOTAL NUMBER OF STATIONS

20

TRAVEL TIME

44 min.

OPERATION & MAINTENANCE COST (2027\$)

\$35M per year

2040 DAILY RIDERSHIP

Total 20,400

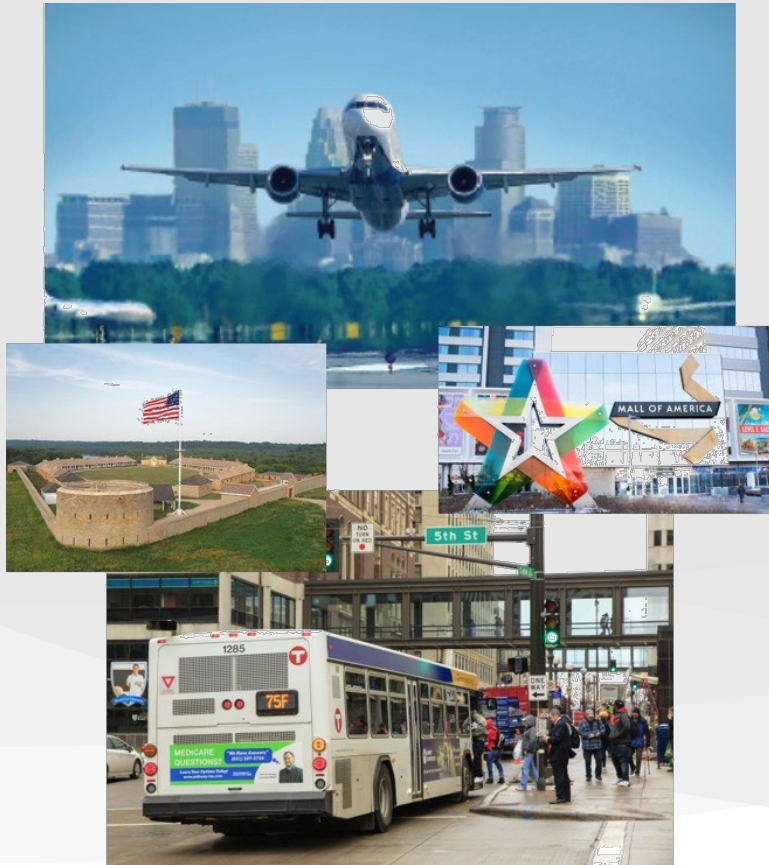
Transit-dependent 4,600

New Riders 2,700

ESTIMATED CAPITAL COST (2029\$)

\$2.066B

Serves Major Destinations and Neighborhoods



- Downtown Saint Paul.
- Highland Park and West 7th Street neighborhoods.
- Fort Snelling at Bdote.
- Minneapolis-St. Paul International Airport.
- Mall of America and South Loop.

Modern Streetcar Characteristics

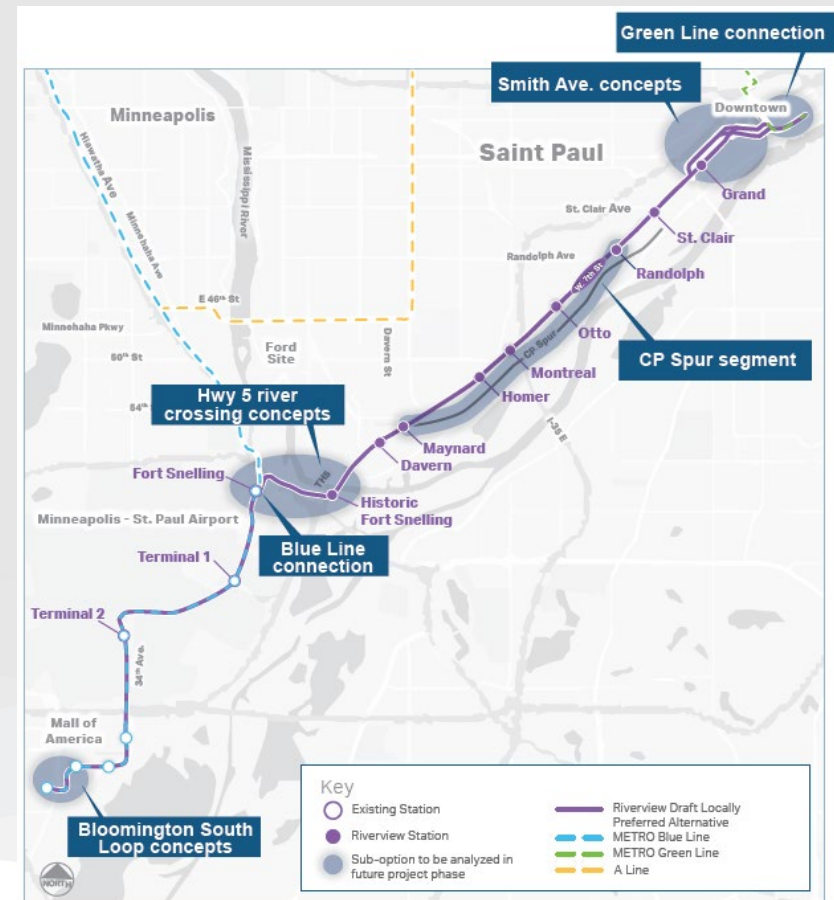
- Improved travel times and reliability through:
 - Shared or exclusive guideway.
 - Signal prioritization.
- Quieter.
- Smoother ride experience.
- Lower floors/level boarding.
- Roomy interiors.
- Catalyze development that contributes to “sense of place.”
- Electric powered with overhead wires (wireless technology available).



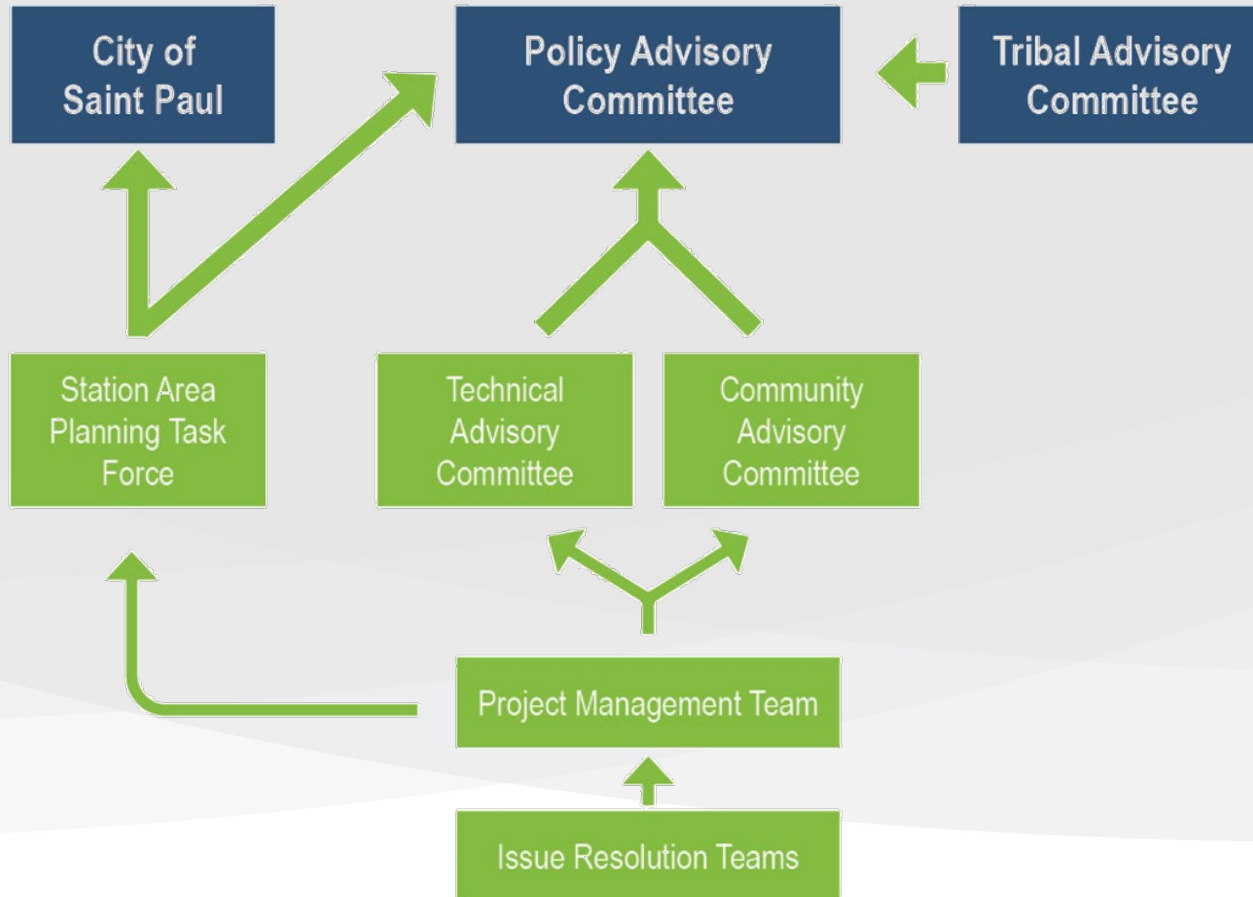
Engineering and Pre-Environmental (EPE) Scope and Organizational Structure

Engineering and Pre-Environmental Phase

- Alternatives
 - Streetcar (Locally Preferred Alternative).
 - Bus Rapid Transit (BRT).
 - No Build.
- Route
 - Light rail transit connections.
 - Seven Corners/Smith Avenue.
 - CP Spur parallel to West 7th Street.
 - Highway 5 river crossing.
 - Bloomington South Loop/Mall of America.
- Operating environment
 - Dedicated and shared use.
 - Center- or side-running.



Project Committees

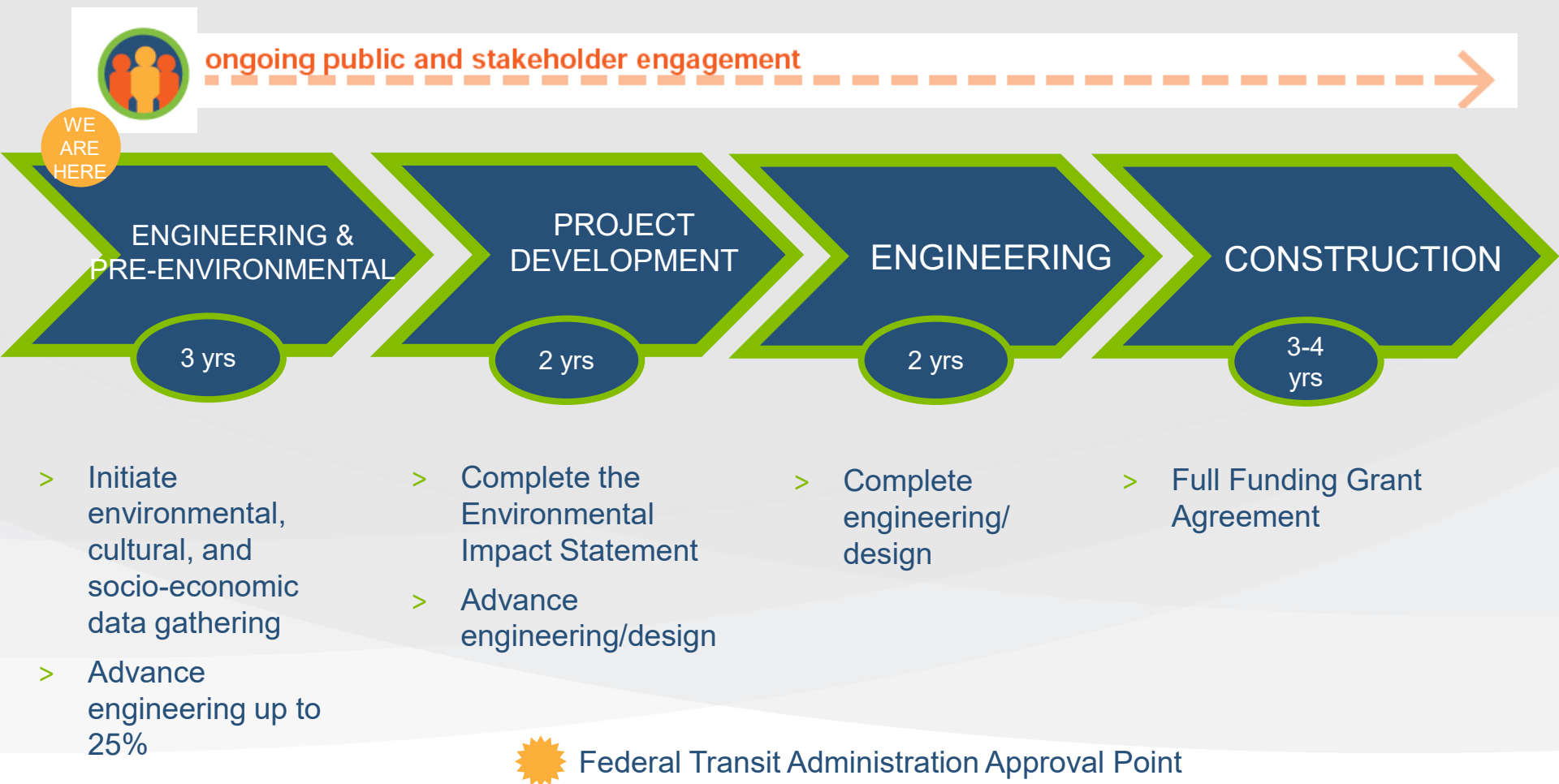


Tribal Coordination



- Entire corridor of interest.
- 11 Federally recognized Tribes in Minnesota, though Dakota Tribes have expressed the most interest.
- FTA initiated Section 106 consultation in 2019.
- Exiled Tribes may express interest during this phase.

Project Timeline



Most Significant Design Issues

Issue Resolution Areas



Key Technical Issues



- Streetscape.
- Public safety.
- Right-of-way.
- Turnbacks.
- Construction impacts.
- Special events.
- Utilities.
- Structures.

Key Technical Issues



- Traffic analysis.
- On-street parking.
- Transit service.
- International airport.
- Stations.
- Railroad coordination.
- Operations and maintenance facility.

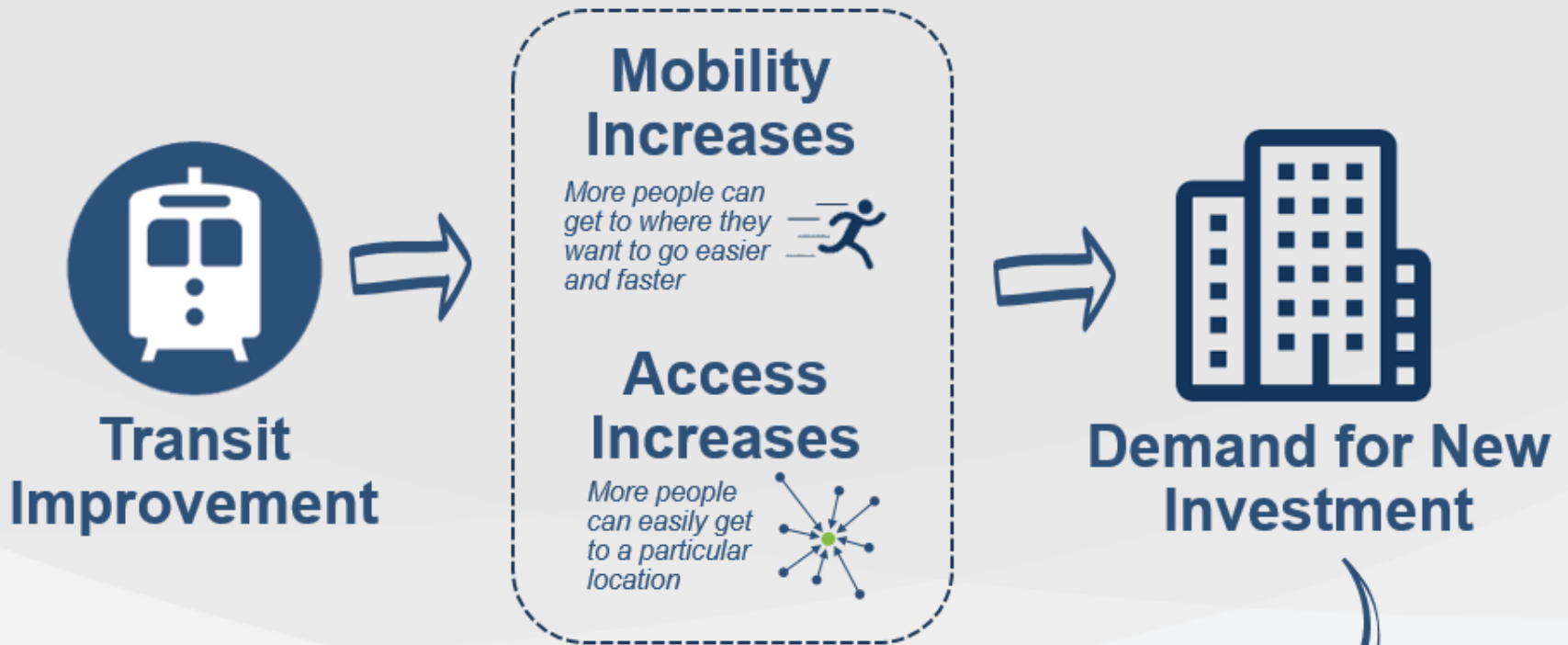
Station Area Planning Overview

What is station area planning?

A collaborative process that identifies ways to promote safe and direct station access and transit-supportive development near transit stations.



Why do Station Area Planning?



Station Area Planning Key Tasks

- Review of previous and ongoing initiatives.
 - City comprehensive plan, neighborhood plans, etc.
- Draft station area plans.
- Station Area Planning Task Force.
 - Guide development of the station area plans in Saint Paul.
 - Forward plans to the Policy Advisory Committee and Saint Paul Planning Commission.

Cultural Resources Overview

Cultural Resources Key Tasks

- Background research and define study area.
- Survey of archaeological and historic resources.
- Reports recommending eligibility of resources for further study.
- Cultural landscape study for Bdote area.
- Tribal coordination.

Engagement Plan Overview

Engagement Goals



GOAL 1: An informed and engaged public that reflects the diversity of the corridor.



GOAL 2: Meaningful input to guide the project.



GOAL 3: Public accountability and transparency.

Engagement Approach

1

reaching the underrepresented



supporting the impacted

2



3

coordinating the connected



Maximizing Effectiveness Through...

- Community liaisons.
- Visual messaging.
- Investing in the community.
- Growing local capacity.
- Making input matter.
- Placemaking and identity.



Corridor Stakeholders

Tribes

- 11 federally recognized tribes
- Exiled tribes
- Other tribal interests in the area

Government

- Ramsey County
- Partner Agencies
- Other local, state, and federal officials

Neighborhood and Community

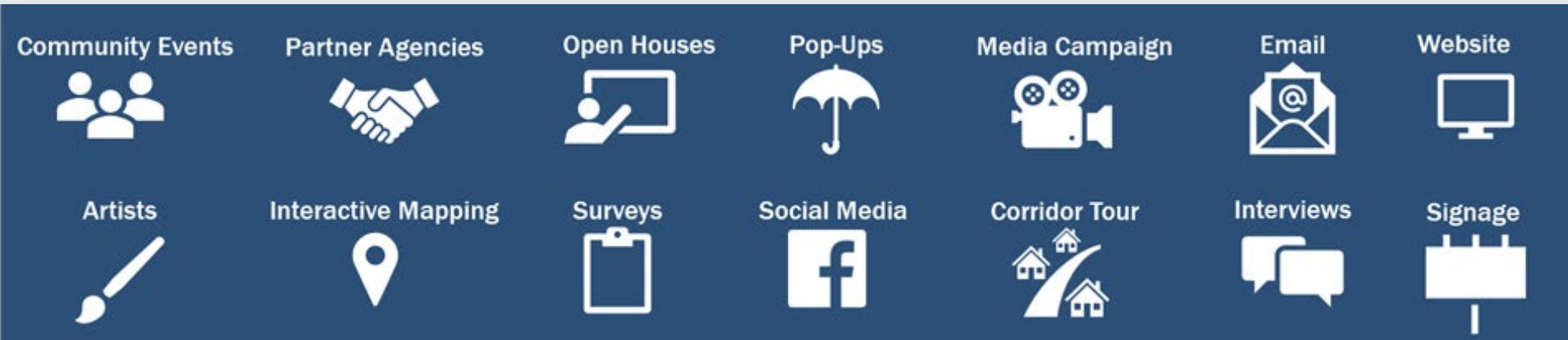
- Residents of project area
- Targeted populations
- Neighborhood associations
- Residential property owners and managers

- Civic, educational, and religious institutions
- Corridor commuters (including transit riders)

Businesses, Real Estate, and Development

- Business owners, employees, commercial property owners
- Business associations and visitors' bureaus
- Major corridor destinations
- Real estate and development professionals

Engagement Strategies



General Timing of Engagement



Riverview Engagement Topics

Purpose and Need Statement

Purpose Statement

The purpose of the Riverview Corridor Project is to provide transit service that enhances mobility and accessibility for residents, businesses and workers and supports economic opportunities within the project area, particularly in low-income neighborhoods.

Need Statements



Planning for population and employment growth



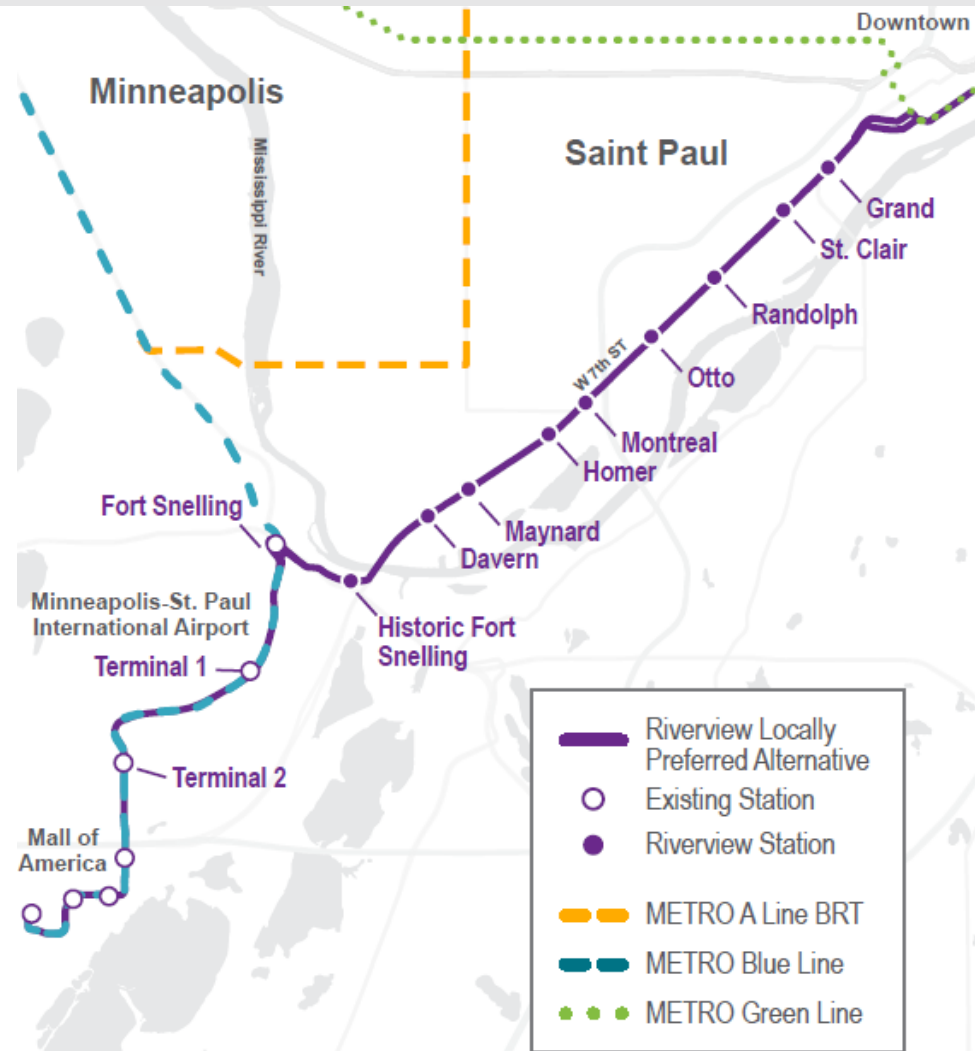
Meeting the needs of people who rely on transit



Addressing a gap in the METRO system and accommodate future travel patterns



Supporting local and regional plans



Purpose and Need Public Review

- Review by tribes and Technical Advisory Committee (due April 19).
- Address comments (April 19-30).
- Public review (May 17-June 25).
- Not a Committee review task.
- View on website at www.rivercorridor.org.

Open House #1 Preparation

- Virtual open house via Zoom.
- Wednesday, June 23, 6-8 PM.
- Will cover:
 - Purpose and need.
 - Existing conditions.
 - Overview of major issues.
- CAC role: attend, share with your networks.

Next Steps

Upcoming Meeting Schedule

- Meeting dates, times, and length.
- Co-chair selection.
- Distribution of agendas and materials.

Draft Content for Next CAC Meeting

- Purpose and need review.
- Public open house recap.
- Critical design issues.
- Tentatively scheduled in August.

Questions?

LEARN MORE: RIVERVIEWCORRIDOR.COM

