



# COMMUNITY ADVISORY COMMITTEE

Meeting #3



# Land Acknowledgement

Every community owes its existence and vitality to generations from around the world who contributed their hopes, dreams, and energy to making the history that led to this moment. Some were brought here against their will, some were drawn to leave their distant homes in hope of a better life, and some have lived on this land since time immemorial. Truth and acknowledgment are critical to building mutual respect and connection across all barriers of heritage and difference.

We are standing on the ancestral lands of the Dakota People. We want to acknowledge the Ojibwe, the Ho Chunk and the other nations of people who also called this place home. We pay respects to their elders past and present. Please take a moment to consider the treaties made by the tribal nations that entitle non-Native people to live and work on traditional Native lands. Consider the many legacies of violence, displacement, migration, and settlement that bring us together here today. And please join us in uncovering such truths at any and all public events.

*The acknowledgment given in the USDAC Honor Native Land Guide - edited to reflect Minnesota tribes. In review with SIA and endorsed by Shannon Geshick, Executive Director Minnesota Indian Affairs Council.*

# Agenda

- Welcome and Introductions.
- Housekeeping Items.
- Blue Line Riverview Connection Study Overview.
- Station Area Planning Update
- Engineering and Pre-Environmental Update.
- Communications and Community Engagement Update.
- Cultural Resource Update.

# Introductions

# Introduce Yourself!

- What is your name and preferred pronouns?
- What is your favorite Winter Olympics event?

# Housekeeping

# Role of Community Advisory Committee

- Representing community views, perspectives, and diversity.
- Provide advisory comments and guidance to the Policy Advisory Committee on:
  - Project development; understand and prioritize benefits and impacts of concept design alternatives.
  - Public engagement process; advise on engagement techniques and community engagement opportunities.
- Provide input through consensus rather than vote.
- Not final decision-maker on the project.

# Group Agreements

- Be open-minded.
- Listen actively/respectfully when others are speaking.
- Speak from your own experience instead of generalizing (Use "I" instead of "they," "we," and "you").
- Respectfully ask challenging questions and refrain from personal attacks.
- Be engaged and provide feedback.
- The goal is not to always agree — it is to gain a deeper understanding.
- Be aware of your facial expressions — they can be perceived as disrespectful as words.
- Do not dominate the discussion, allow others to be heard.
- "Step Up and Step Back!"

# Virtual Meeting Procedures – Members

- Please mute your mic when not speaking.
- Please leave your video feed on if possible.
- If you wish to speak:
  - Please use the “raise hand” feature.
  - Unmute your mic.

# Blue Line/Riverview Study Overview

Study Area



# 18-month project duration



## Decision-Making Process



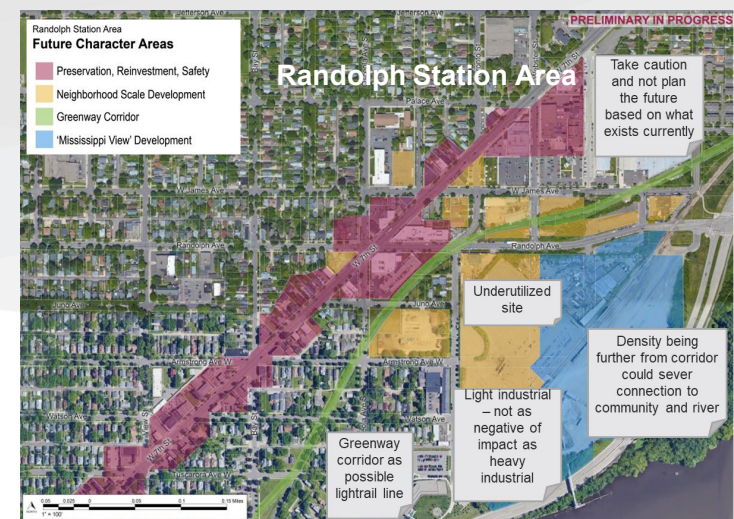
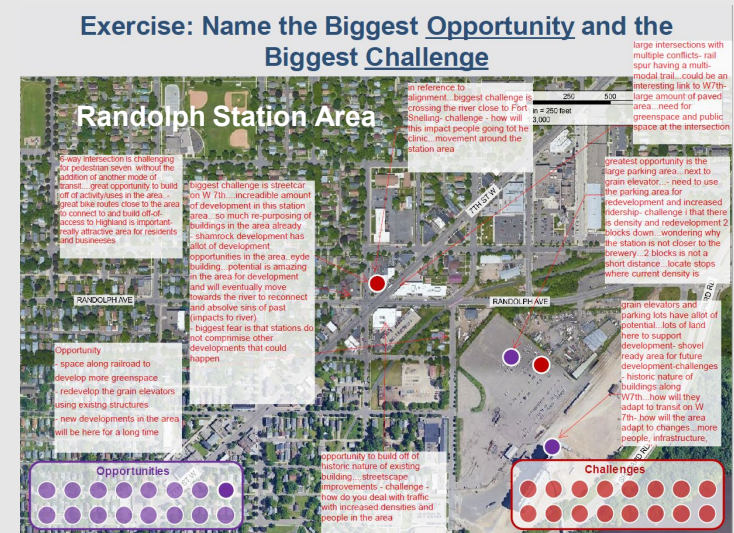
## Project Stakeholders



# Station Area Planning Task Force Update

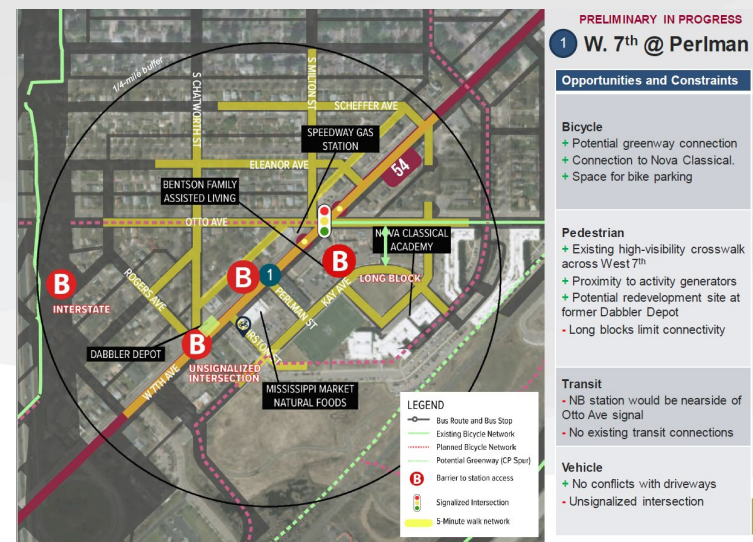
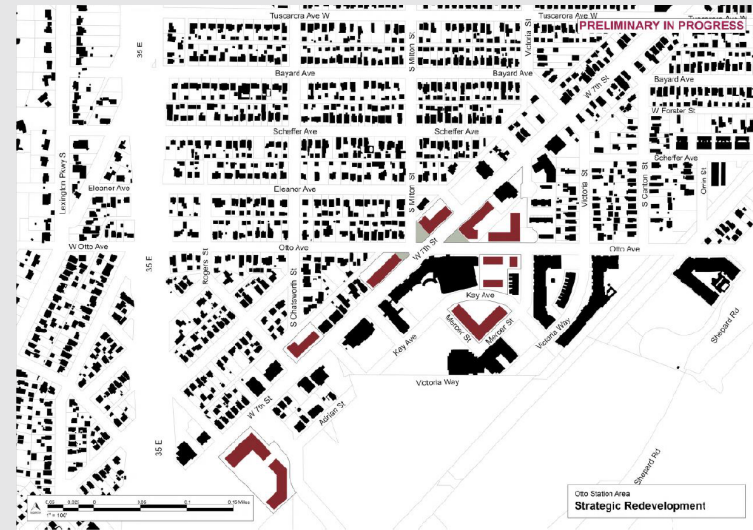
# Overview of Recent Station Planning Task Force Meetings (October 2021-January 2021)

- Focus on Saint Clair, Randolph, and Otto station areas.
- Gathered input on station area opportunities and challenges.
- Reviewed and discussed preliminary concepts that address:
  - Public realm.
  - Land use/future character.
  - Movement.



# Station Area Planning Focus: St. Clair, Randolph, and Otto Avenues

- Engaged many of the prominent stakeholders in the area.
- Developed preliminary concepts that addressed:
  - Potential areas of change.
  - Opportunities for public realm improvements.
  - Opportunities for safer/enhanced connections.
  - Pros/Cons of possible station locations.



# Station Area Planning Survey (Online)

FOCUS ON ST. CLAIR,  
RANDOLPH, OTTO  
STATION AREAS



SURVEY  
CONDUCTED  
NOV–DEC 2021



**341**  
RESPONDENTS

PROMOTED VIA  
SOCIAL MEDIA,  
NEWSLETTERS, ETC.



**55%** LIVE OR WORK  
IN THE AREA



## WHAT DO YOU LIKE ABOUT THE AREA



**61%** Proximity to  
Goods and  
Services



**18%** General  
Accessibility



**11%** Neighborhood  
History/  
Architecture



**6%** Access to  
Parks, Trails,  
and the River

## MOST IMPORTANT TO THE FUTURE OF THE AREA



**69%** Safe Areas to  
Walk



**42%** Revitalization  
of Underutilized  
Property



**31%** Streetscape  
Improvements  
in Business  
Areas



**27%** Community  
Parks and Other  
Green Areas

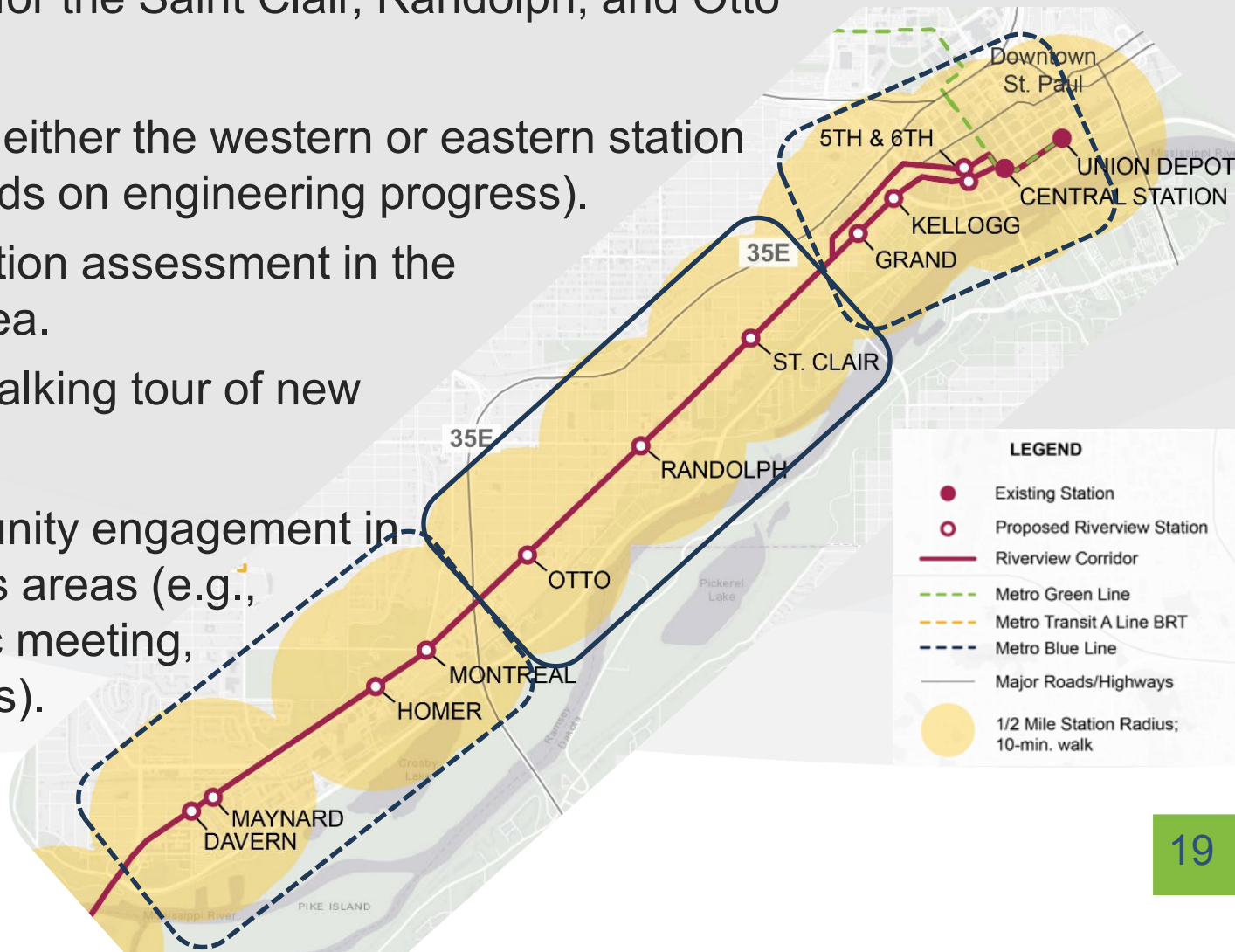


**24%** Safe Areas to  
Bike

# Station Area Planning Next Steps

## (March-May 2022)

- Refine plans for the Saint Clair, Randolph, and Otto station areas.
- Shift focus to either the western or eastern station areas (depends on engineering progress).
- Platform location assessment in the new focus area.
- Task Force walking tour of new focus areas.
- Begin community engagement in the new focus areas (e.g., survey, public meeting, pop-up events).



# Engineering and Pre-Environmental Update

# Airport/Bloomington Issue Resolution Status



© 2021 Ramsey County, MN. All rights reserved. 06/2021 - 11/2021



RIVERVIEW EPE  
RIGHT OF WAY COMPARISON - OPTION 8  
12/03/2021 REV 01

## Next Steps

- Continued coordination with Metro Transit.
  - Connecting to MOA Transit Center.
  - Operating through airport tunnel.
  - Event operations.
- Resume IRT in spring/summer timeframe.

# **Bdote Fort Snelling Issue Resolution Status**

# Current Conditions



# Tribal Partner Update

- Tunnel - Native bedrock around the existing tunnel should not be disturbed in any way.
- Avoid any other areas of rock disturbance in vicinity of Bdote/Fort Snelling.
- If there are minimal impacts to rock that may be suggested for safety or other reasons or provide other benefits important to tribal activities or culture, tribal partners are willing to discuss these items on a case-by-case basis.
- If minimal impacts are necessary and agreed upon by the project and tribal partners; tribal partners have a preference to reuse any removed materials and place back on the site in some way.

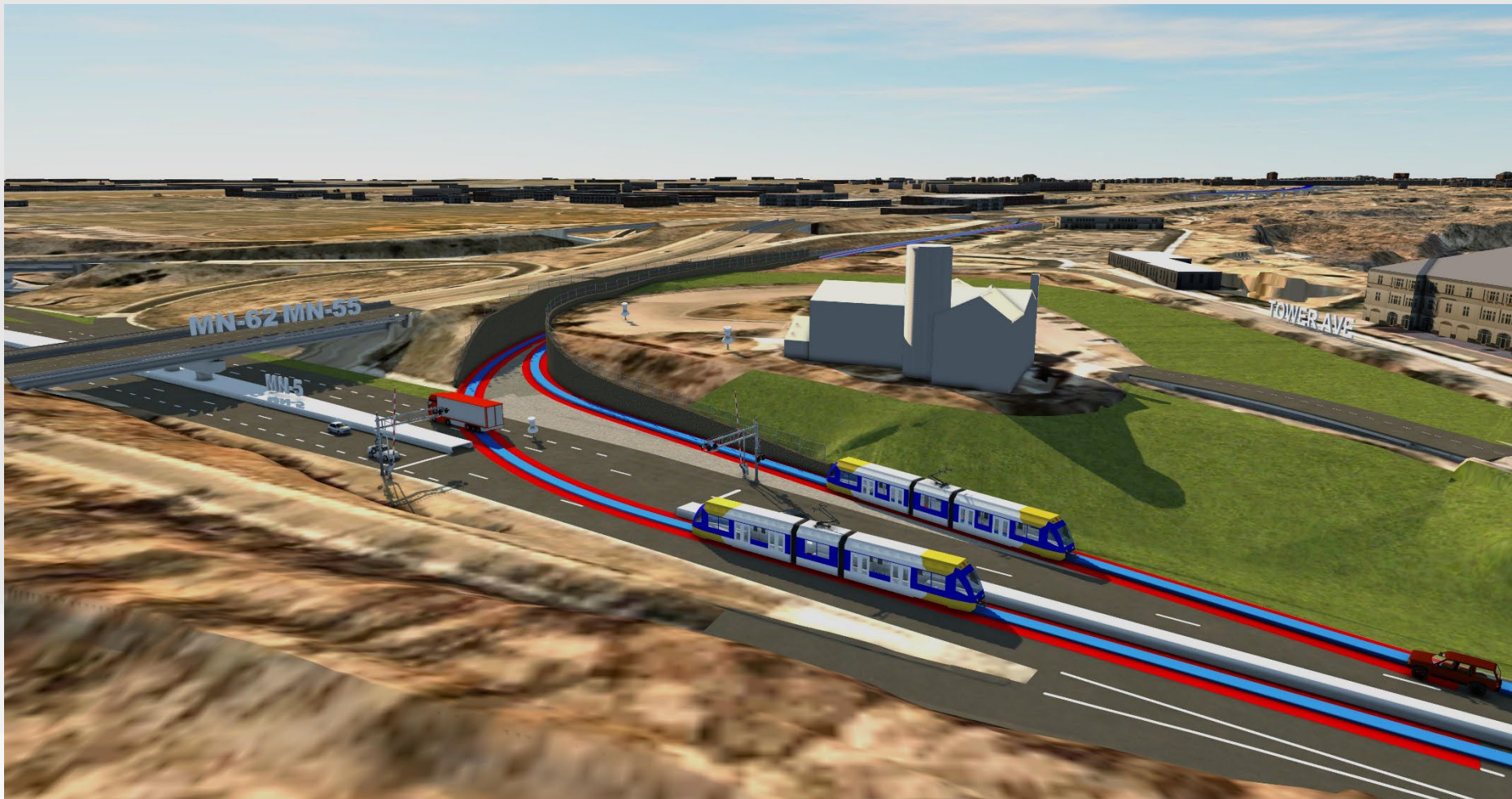
# Elimination of "Transit Flyover" Option

- Rock disturbance key issue = use existing tunnel.
- Peds/bikes only mode at bluff top.
- Transit incompatible at top of bluff due to:
  - Structural load on tunnel.
  - Impacts to historic buildings.
  - Area of remembrance impacts.
  - Fort Snelling operational impacts.
  - Bike/ped conflicts.
  - Visual impacts.
  - Noise/vibration.
  - Additional structure south of tunnel.
  - Difficult connections on Saint Paul side.

# Single-Track Alternative



# Mixed-Traffic Alternative

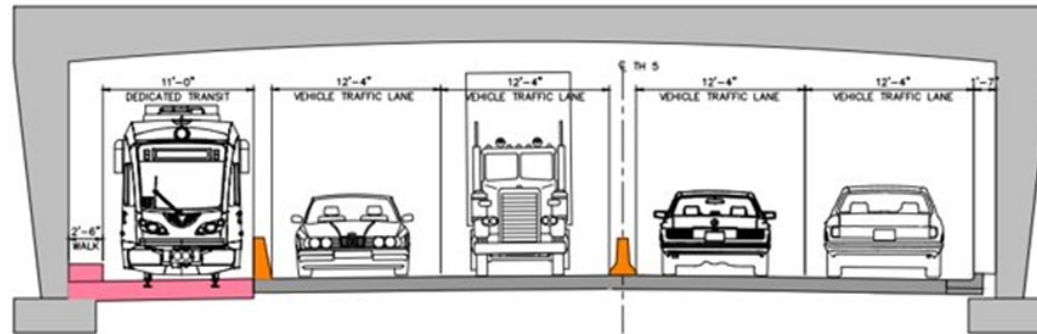


# Operational Comparison

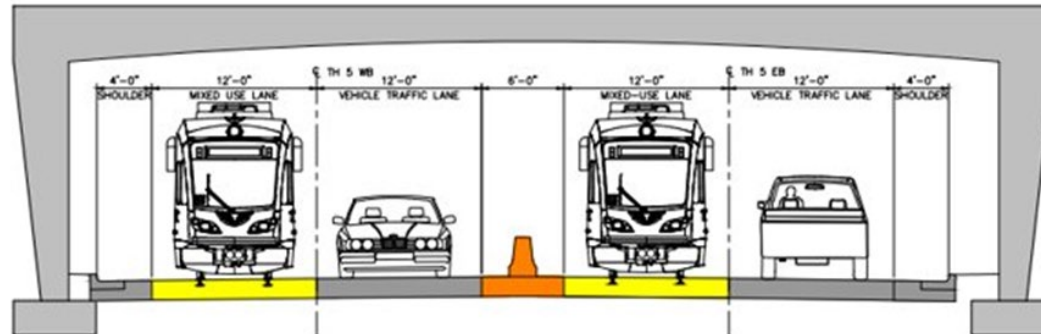
- Proposed transit operational conditions for comparison with existing options:
  - Dedicated train double track through the tunnel at the expense of automobile lanes.
- Existing Options
  - Dedicated train single track + 4 travel lanes.
  - Mixed traffic/train double track + 2 travel lanes.

# Operational Comparison

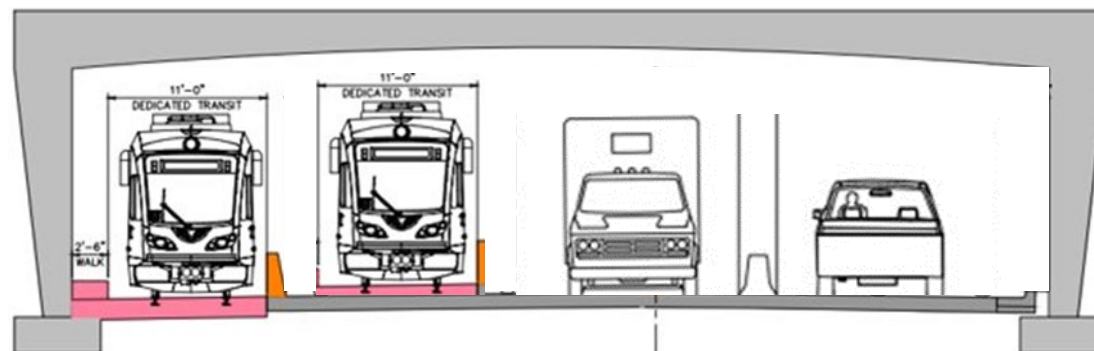
- Updated scenarios:
  - No-Build.
  - 2 transit + 2 vehicle lanes.
  - 1 transit + 1 shared + 2 vehicle lanes.
- Steps:
  - Validate data and network assumptions.
  - Run STOPS model to estimate mode shifts.
  - Trip assignments.
  - Traffic forecasts, diversions, impact analysis.



TRANSVERSE SECTION - LOOKING TOWARDS ST. PAUL  
(EAST PORTAL SHOWN)

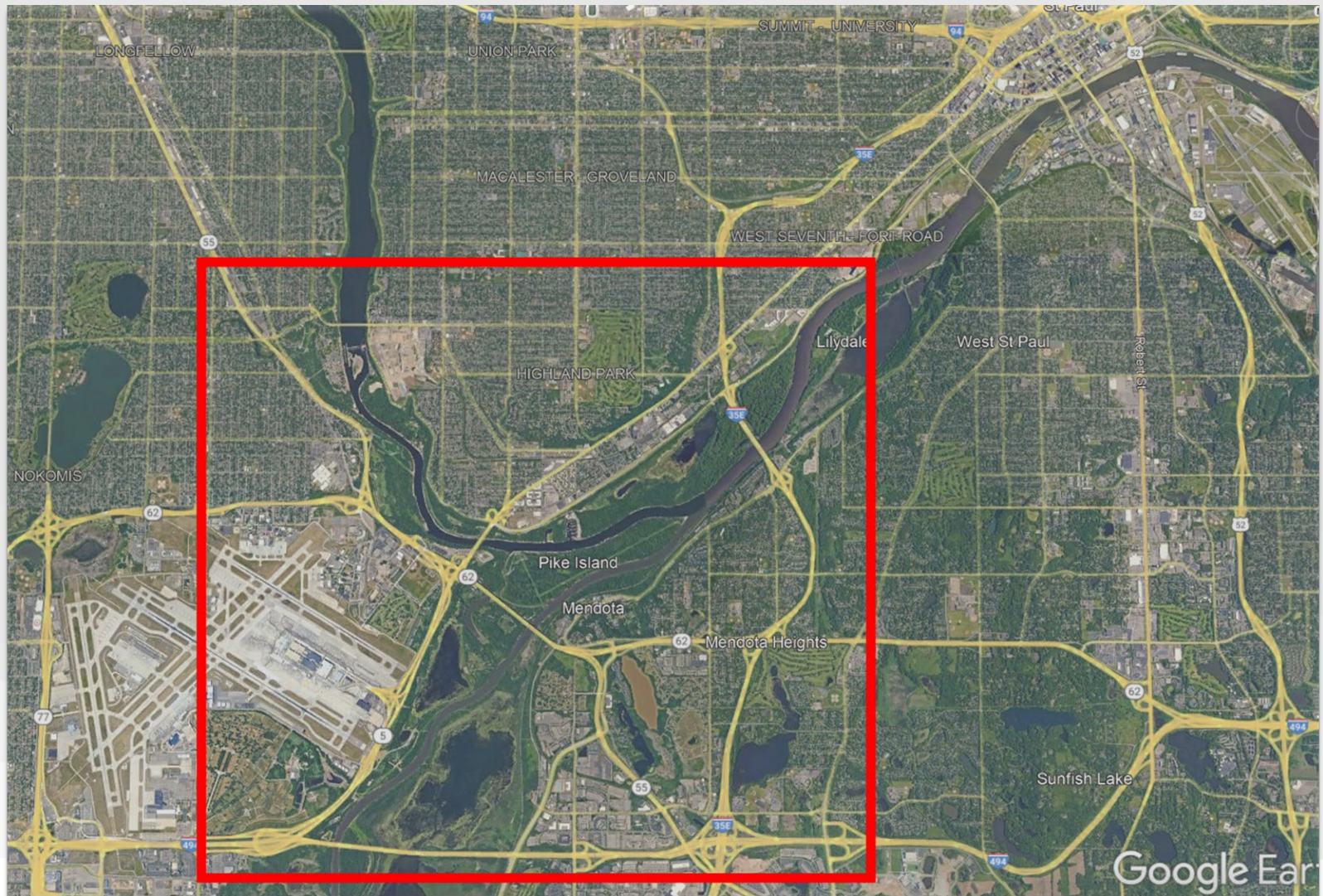


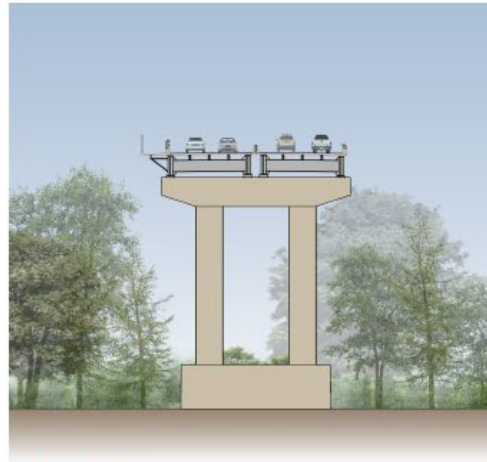
TRANSVERSE SECTION - LOOKING TOWARDS ST. PAUL  
(EAST PORTAL SHOWN)



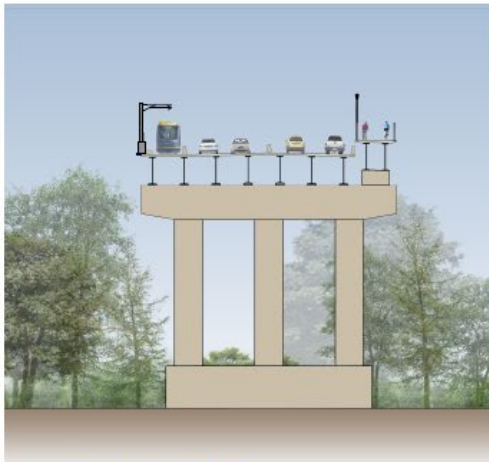
TRANSVERSE SECTION - LOOKING TOWARDS ST. PAUL  
(EAST PORTAL SHOWN)

# Primary Focus Area

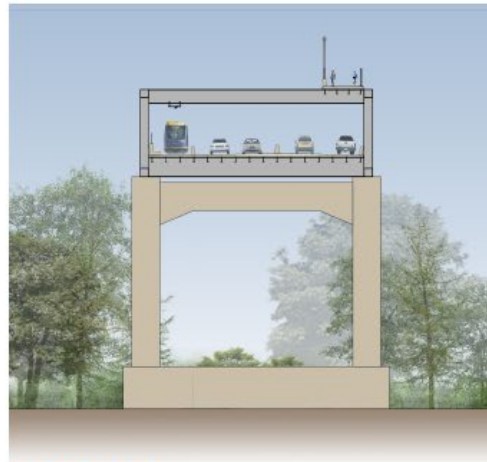




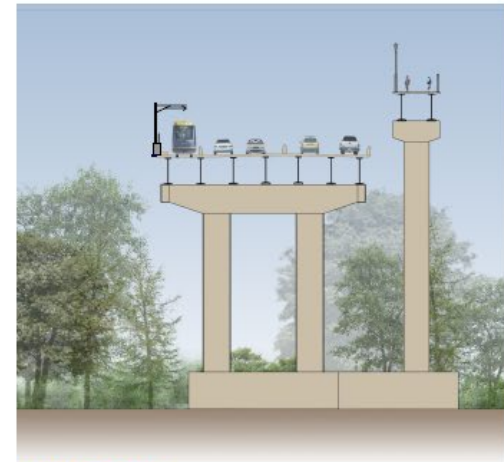
EXISTING



CONCEPT 1 - PIER 6



CONCEPT 2



CONCEPT 3

DRAFT - WORK IN PROCESS

# MISSISSIPPI RIVER BRIDGE CROSSING

CONCEPT ELEVATIONS

CORRIDOR

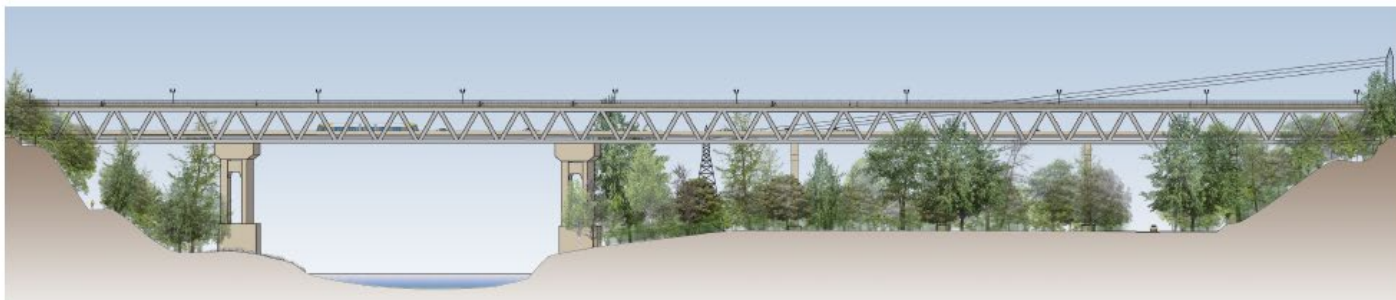
JANUARY 10, 2022



CONCEPT 1



CONCEPT 2



CONCEPT 3



DRAFT - WORK IN PROCESS

# MISSISSIPPI RIVER BRIDGE CROSSING

CONCEPT ELEVATIONS

JANUARY 10, 2022

# Option 1 - Bike/Ped Connection from Bridge



# Option 2 – Elevated Bike/Ped Connection from Truss Bridge Design



# Option 3 – Elevated Bike/Ped Connection from Bridge



# Alignment – Connection to Blue Line

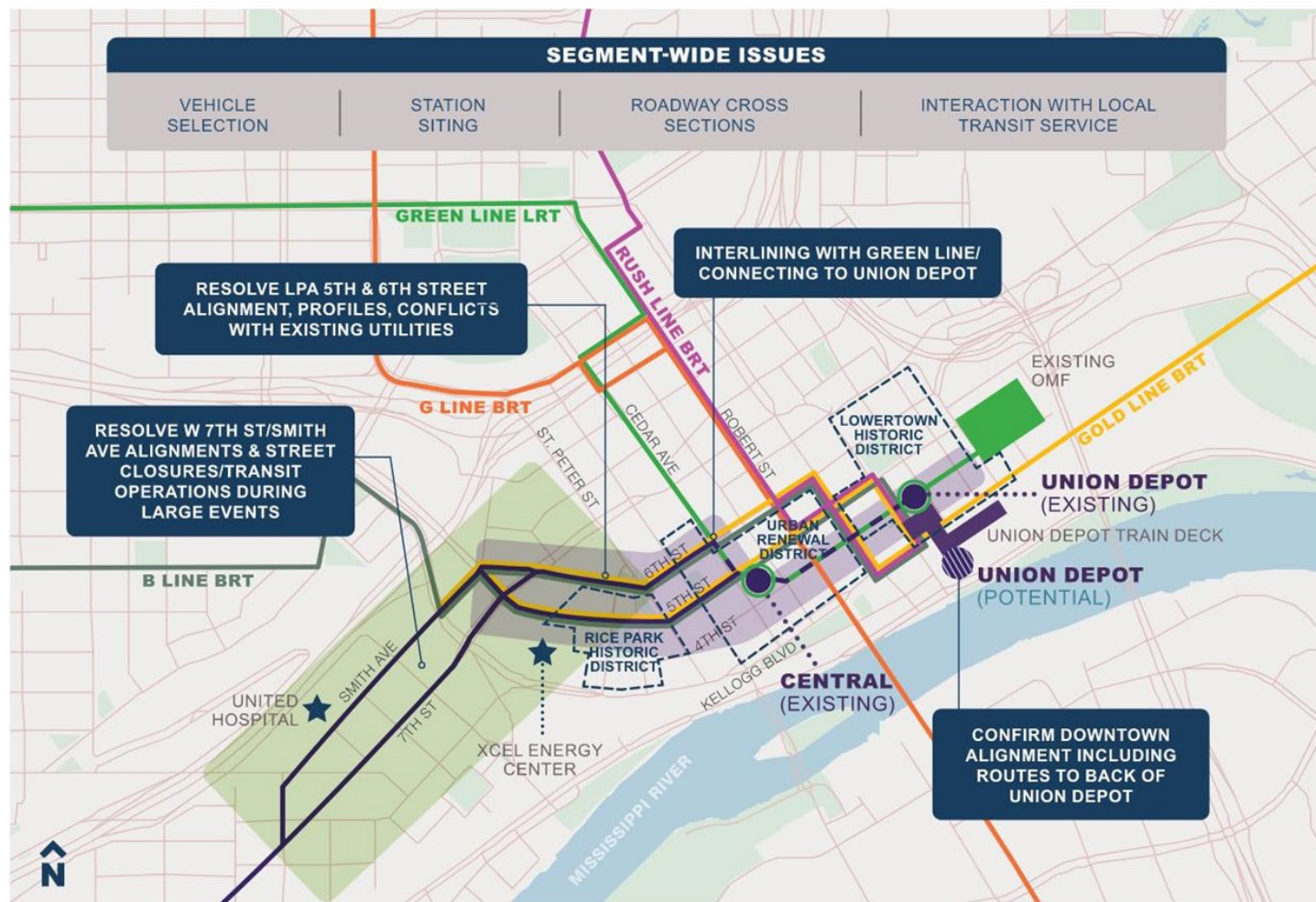


## Next Steps

- Continued coordination with partner agencies and tribes.
- Operational comparison of scenarios for transit and traffic across bridge.
- Evaluation of bridge and bike/pedestrian concepts.
- Refinement of Blue Line connection.

# **Saint Paul Issue Resolution Status**

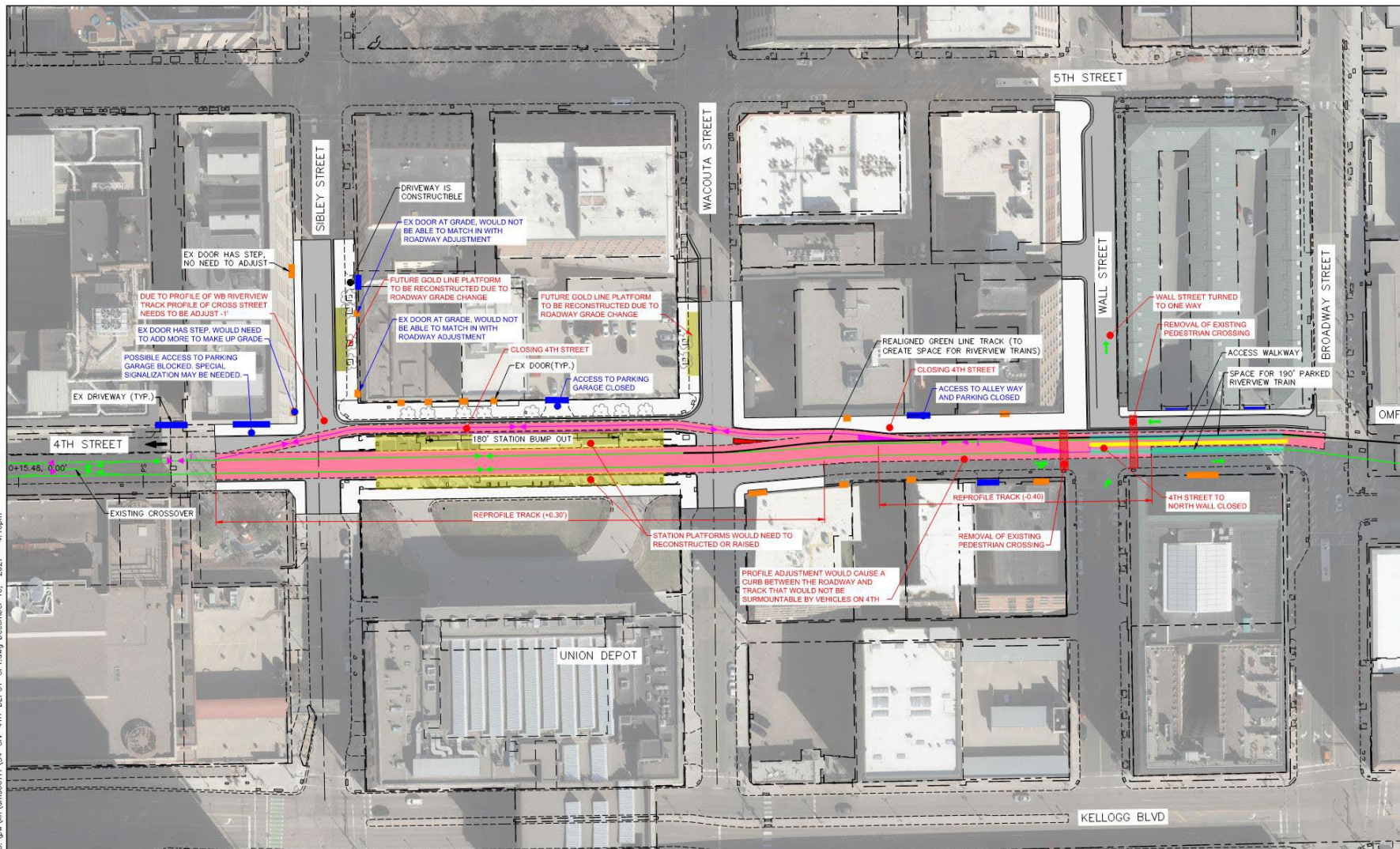
- Downtown**
- West 7th**



## ST. PAUL-DOWNTOWN IRT

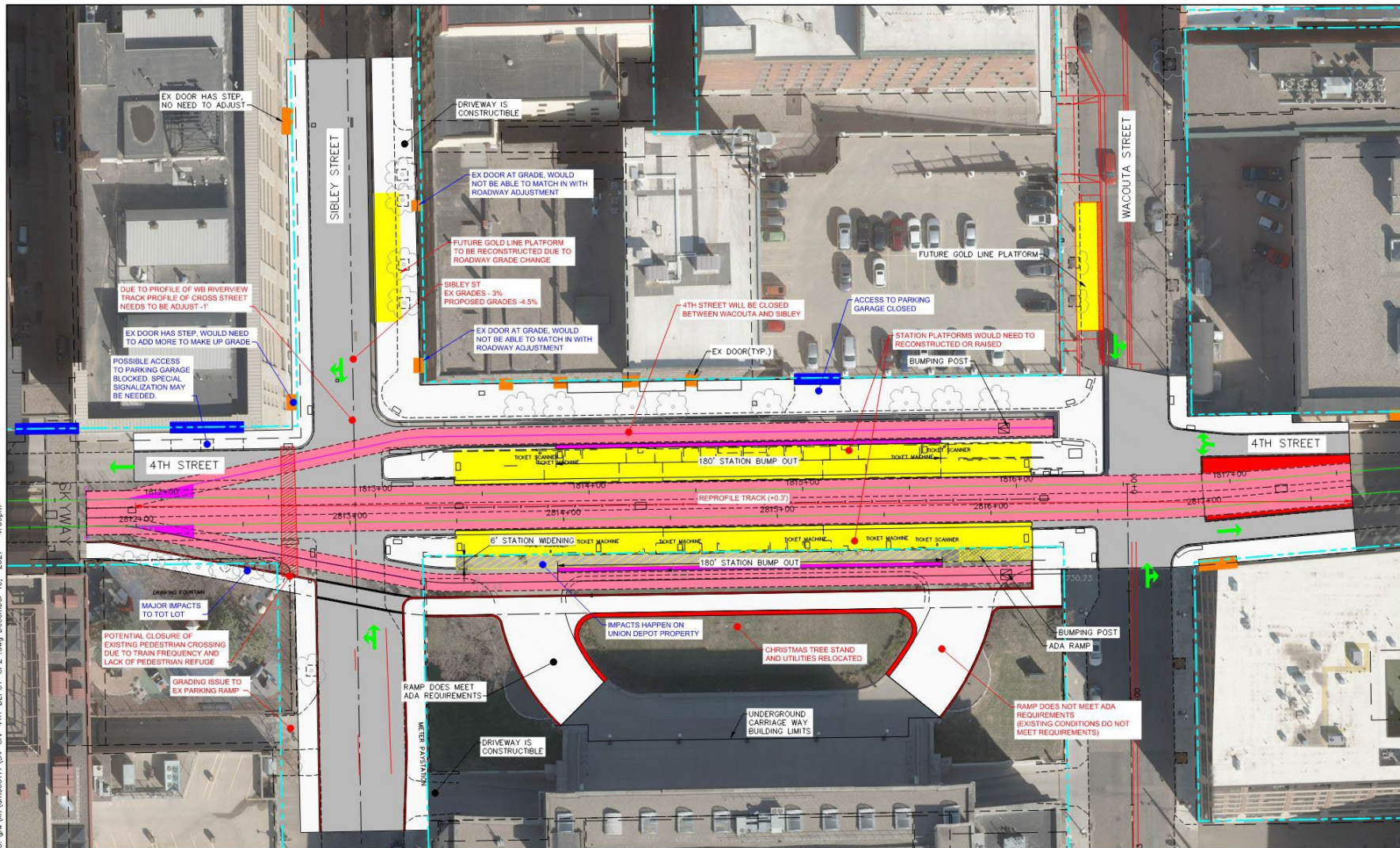
RAMSEY COUNTY

RIVERVIEW CORRIDOR



# Option 1 Impacts & Benefits

Impacts	Benefits
<ul style="list-style-type: none"><li>• Permanent closure of 4<sup>th</sup> Street westbound from west of Sibley Street to Wall Street.</li><li>• Regrading of Sibley Street to match the profile of the westbound Riverview track.<ul style="list-style-type: none"><li>• Future Gold Line platform to be reconstructed due to the grade change of the roadway.</li></ul></li><li>• Station platforms to be reconstructed/raised.</li><li>• Surmountable curb on 4th Street replaced with a curb between the roadway and track.</li><li>• Connectivity/pedestrian environment.</li><li>• Resulting property impacts:<ul style="list-style-type: none"><li>• Lowertown Lofts Parking Ramp Lower-Level Access.</li><li>• 333 Sibley Street Parking Garage Access.</li><li>• Saint Paul Farmers Market reconstruction.</li><li>• Existing doors would not match with adjusted roadway grades.</li></ul></li></ul>	<ul style="list-style-type: none"><li>• Supports LPA Alignment.</li><li>• Utilizes existing Green Line platform widths.</li><li>• No direct impact to the Union Depot Property or Tot Lot</li></ul>



**RAMSEY COUNTY**

**RIVERVIEW EPE**  
 SAINT PAUL - DOWNTOWN IRT  
 FRONT OF UNION DEPOT STATION OPTION 2  
 12/20/21 REV 1



0 20 40  
 SCALE HORIZONTAL  
 IN FEET

# Option 2 Impacts & Benefits

Impacts	Benefits
<ul style="list-style-type: none"> <li>• Permanent closure of 4<sup>th</sup> Street westbound from west of Sibley Street to east of Wacouta Street.</li> <li>• Regrading of Sibley Street to match the profile of the westbound Riverview track.               <ul style="list-style-type: none"> <li>• Future Gold Line platform to be reconstructed due to the grade change of the roadway.</li> </ul> </li> <li>• Station platforms to be reconstructed/raised.</li> <li>• Potential ADA impacts to front of Depot connection.</li> <li>• Resulting property impacts:               <ul style="list-style-type: none"> <li>• Lowertown Lofts Parking Ramp Lower-Level Access.</li> <li>• 333 Sibley Street Parking Garage Access.</li> <li>• Major impacts to Tot Lot.</li> <li>• Existing doors would not match with adjusted roadway grades.</li> <li>• Union Depot property impacts.</li> </ul> </li> </ul>	<ul style="list-style-type: none"> <li>• Supports LPA Alignment.</li> <li>• Utilizes existing Green Line platform widths.</li> <li>• Does not impact properties from Wacouta to Broadway</li> </ul>

## Downtown – Current Focus

- 4th Street Options viable with challenges.
  - Explore beyond LPA/front of Depot service.
  - Evaluate other alignments:
    - Push further east on 4th Street, towards OMF.
    - 5th/6th Street options.
    - City request to consider 7th Street alignment.
    - Back of Depot.

## West 7th – Current Focus

- Dedicated lane opportunities.
  - CP Spur operational comparison.
- Mississippi River crossing transition.
- Roadway jurisdiction.
- Pedestrian and bicycle priorities.
- Streetscape.
- Overhead catenary system poles.

## Next Steps – Overall Project

- Finish Saint Paul alignment refinements along West 7<sup>th</sup> and downtown by mid-March.
- Transition to working on the best bus alternative.
- Anticipate going out to the public with the refined streetcar and best bus alternatives in May/June.

# Communication and Community Engagement Update

# Recap of Engagement Activities

- **October 15th Engagement at Fare-For-All**
  - 60+ attendees for the area
- **Section 106 Meeting, December 8, 2021**
  - 25 attendees
- **Monthly newsletter and twice weekly posts on social media**
- **3 billboards along West 7th in November, December, and February**

# Current and Upcoming Engagement Opportunities

- Bicycle and Pedestrian survey available
  - [Survey link here](#)
- Latest newsletter and social media posts available.
- Frequently Asked Questions posted to website.
- District Council meeting updates in March and April.
- Spring Open House - *hopefully in person*

# Cultural Resources Update

# Cultural Resources Update

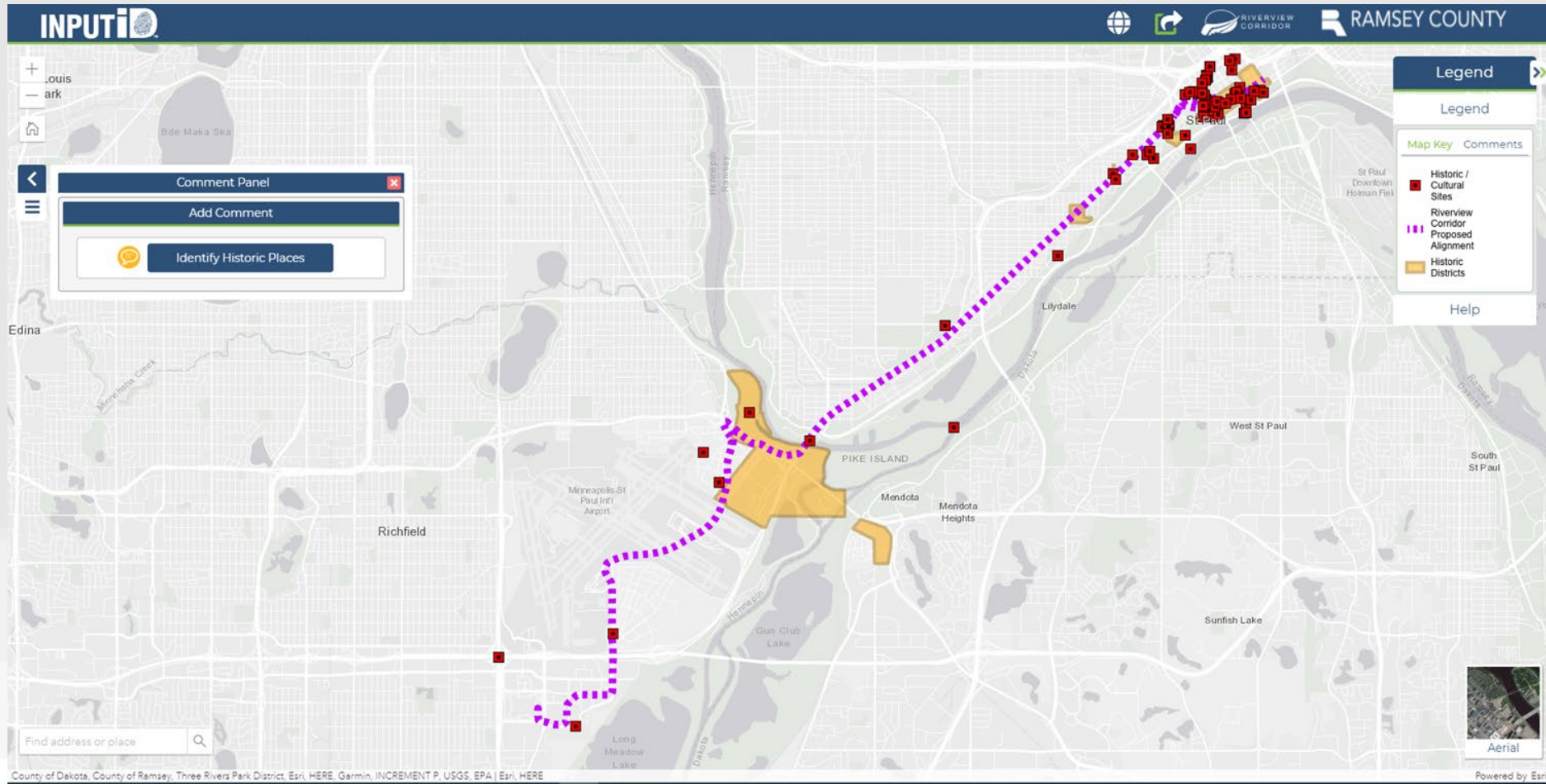
- Cultural Landscape Study – Underway (2022-2023).
- Area of Potential Effect (APE) – To be initiated in 2022.
- Identification (Phase I) surveys - To be initiated in 2022.



(Photo courtesy of MNHS)

# Online Mapping Tool

Identify places and add comments to the map  
<https://gis.bolton-menk.com/inputid/?app=riverviewculturalresources>



# Questions?

LEARN MORE: [RIVERVIEWCORRIDOR.COM](http://RIVERVIEWCORRIDOR.COM)

